



Expertise

Protocol number: 41242335
Order No. / Reference: 24992402
Inspection date: 17 Aug 2025

Manufacturer: Audi

Model: A6 40 TDI S tronic sport

VIN: WAUZZZF29PN077339



Vehicle details	
Manufacturer / Type / Model / Equipment	
Audi A6 40 TDI S tronic sport	
Vehicle Identification number	WAUZZZF29PN077339
Mileage (Read)	54,004 km
First registration	18 Jul 2023
Number of holders	1
Power / Engine displacement	150 kw / 1,968 ccm
Fuel type / Cylinder	Hybrid Diesel / E / 4
Gearbox / Number of gears	Automatic / 7
Type of drive	Front drive
Type of vehicle	Saloon car
Colour / colour code	Mythossschwarz Metallic
Doors / Seats	4 / 5
Upholstery type	Leather
Colour of upholstery	Black



Vehicle details

Maintenance booklet / proof	digital proof / complete	Next maintenance in	6,800 km
Key is / should be	2 / 2	FZG documents	ZB#2 (B) was available (copy), ZB#1 (S) was not available
		Letter No.	GV185671
Previous damage / Accident	Detectable	Repainting	Detectable
Inspection conditions	sufficient	Lifting equipment / pit	yes
Test drive	Not performed	Engine function test	Performed
Manufacturer key number/ type code number	0588 / BTN 03284		
Emission standard	EURO6;WLTP;AP;PI/CI; M, N1 I	Fine dust sticker	
Permitted total weight	2,250 kg	Empty weight	

Tyres

Mounted tyres

#	Tyre size	Type of tyre	Manufacturer	Tread depth
1)	225/55 R18 102V	Winter tyres on Light alloy	Nexen	5mm / 5mm
2)	225/55 R18 102V	Winter tyres on Light alloy	Nexen	7mm / 7mm

Additional tyres

#	Tyre size	Type of tyre	Manufacturer	Tread depth
1)	225/55 R18 102Y	Summer tyres (Without wheel rim)	Pirelli	5mm / 5mm
2)	225/55 R18 102Y	Summer tyres (Without wheel rim)	Pirelli	6mm / 6mm

Replacement

Typ	Tyre size	Type of tyre	Manufacturer	Tread depth
Tirefit		Expiration date 05/2028		

Legend: Tread depth information for tires on the left is in the first place, for tires on the right is in the second place on the axle in the direction of travel



Equipment

Standard equipment

- | | |
|--|---|
| <ul style="list-style-type: none"> • AdBlue tank (12 liters) • Airbag: Front side airbags and head airbag system • Audi connect navigation & infotainment • Audi drive select • Audi pre sense front • Exterior mirror housings in body color • Headlining fabric • Diesel particulate filter (DPF) with nitrogen oxide catalyst and AdBlue tank • Electronic Stabilization Control (ESC) • radio key • Cruise control including speed limiter • Transmission: S tronic 7-speed • Dimmable interior mirror • 2-zone automatic climate control • Headrests (4) • Steering wheel: 3-spoke leather steering wheel with multifunction and shift paddles • MMI navigation with MMI touch response • Non-smoking package • Wheel: Light alloy wheels 5-arm design • Wheel: Tire repair kit • Radio accessories: 8 speakers (passive) front and rear • Seats: 4-way lumbar support • Sun visor on driver and passenger side • Start-stop system • Glazing: Rear window, rear door and side windows in clear glass • Central locking | <ul style="list-style-type: none"> • Airbag for driver and front passenger • Anti-lock braking system (ABS) • Audi connect emergency call & service m.connect remote & control • Exterior mirrors electrically adjustable and heated • Brake light, third • Decorative inlays aluminum fragment • tachometer • Door sills with aluminum inserts front and rear • Driver information system with color display • Automatically opening luggage compartment lid/manually opening luggage compartment lid • Interior lighting • ISOFIX and Top Tether child seat attachment for the outer rear seats • LED headlights • Steering column, manually height and axially adjustable • Front center armrest • Gloss Package • Progressive steering • Wheel: Tire pressure monitoring indicator • Radio: MMI Radio plus with MMI touch response • Seat covers in fabric • Seats: Front sports seats • Lane Departure Warning • Glazing: Windscreen in thermal insulation glazing • Electronic immobilizer • Heat-insulating glazing on the sides and rear |
|--|---|

Extra equipment

- | | |
|--|--|
| <ul style="list-style-type: none"> • Parking aid plus with surround display (acoustic and visual parking aid at the front, sides, and rear to assist with parking and maneuvering using 12 ultrasonic sensors. A selective visual display shows the distance to detected objects in the upper display, depending on the current steering angle and direction of travel. Upon request, the system is activated automatically as soon as the vehicle approaches a detected obstacle at a speed of less than 10 km/h.) • Front seat heating (heats seat and backrest centre panels; with leather upholstery, sports seats and sports seats plus also seat side bolsters - individually adjustable in several stages for driver and front passenger side on the climate control panel) | <ul style="list-style-type: none"> • Fuel tank (73 liters) (fuel tank for 73 liters of petrol/diesel fuel) • Paint finish: metallic • Seat covers in Valcona leather (for sports seats) (seat center panels, seat side bolsters, headrests and front center armrest in Valcona leather, door panel inserts in Alcantara) • Seats: Rear seat backrest, split-folding (distinctive outer rear seats, visually matched to the front seats, and an additional central seating option - 3 rear L-shaped headrests, manually height-adjustable, for good rear visibility - three 3-point seat belts - rear seat backrest split 40:20:40 or fully foldable - rear center armrest, one-piece and foldable, with storage compartment) |
|--|--|



Brief expert findings

Documents submitted	At the time of the inspection, the registration certificate Part 2 (letter) was available, but the registration certificate Part 1 (certificate) was not. (Copy)
VIN comparison	The vehicle identification number (VIN) was read from the vehicle and its conformity with the submitted documents was verified during the inspection by the undersigned.
Inspection	The inspection conditions were sufficient for the assessment of the vehicle. Lifting equipment and a pit were available for examining the vehicle.
Test drive	No test drive/maneuvering was carried out during the inspection of the vehicle.
Engine function test	An engine test run was performed.

Value reducing factors

No.	Component group	Description
1	Door - front left side	Door edge - Scratch(es) - Smart repair
2	Rear bumper	Rear bumper - Scratch(es) - Smart repair
3	Sill - right side	Sill (Verkleidung) - dent(s) - Replace
4	Misc.	Inspection / maintenance - Due - Perform
5	Door - rear right side	Door - Dent / paintcoat damage - Repair and paint
6	Front bumper	Front bumper - Scratch(es) - Paint
7	Side panel - rear right side	Side panel - Dent / paintcoat damage - Repair and paint

Previous damages

No.	Previous damage	Extent of damage (Net)
1	Side right, Provided by user / customer, from 23 Sept 2023	960,34 €
2	Front, Side - left, Side right, Provided by user / customer, from 13 Mar 2024	19.801,41 €

Repainting

No.	Repainting
1	Door - front left side, Professionally carried out
2	Door - front right side, Professionally carried out

Paint coat thickness measurement

Door - front left side	212 µm	Door - front right side	270 µm
------------------------	--------	-------------------------	--------

Order/Scope of order

The order was placed to prepare a sales report for the vehicle described. This includes the following:

- Description of core relevant information about the vehicle
- Documentation of equipment features
(Delivery by third-party service providers)
- Documentation of damage, defects, missing parts
- Documentation of previous damage, unrepaired previous damage, repainting
- a brief visual or functional inspection of the equipment details if possible.
(Functional tests of driver assistance systems are not included in the scope of services!)
- a photo documentation of the vehicle



Basis for the order

This product is based on the Alphabet Fuhrpark GmbH guidelines for vehicle returns and valuations. The expert makes the explicit findings in each individual case objectively within the framework of the specified standards based on his or her own expertise.

The vehicle inspection takes place in a disassembled state.

Damage or defects that can only be detected during disassembly/diagnosis work or through advanced knowledge remain within the scope of the prognosis risk. An extended risk exists for concealed defects caused by fraudulent deception and not identifiable by the expert.

Damage or defects resulting from normal use or wear and tear of the vehicle will be accepted according to the applicable standard.

There was no explicit identification or monetary consideration of the expected features within the product.

Features which in their nature and severity slightly exceed normal use but do not constitute unacceptable damage will be documented and identified under signs of use if necessary.

Damage or defects which, according to the underlying standard, can no longer be attributed to normal use or wear and tear are listed in the product under "Depreciating Factors".

Depending on the product specification, a monetary ID can be provided. If this takes place, the costs can be 100% d or pro rata depending on the vehicle's age and mileage.

Previous damages

According to available information previous damages were repaired at the vehicle. Traces of repairs, which allow conclusions about the area of repair, were not recognizable during the inspection.

Comments

- Winterreifensatz ist kein Bestandteil des Auslieferungsumfangs.



Figure 1: Diagonal front (left)



Figure 2: Diagonal front (right)



Figure 3: Diagonal rear (left)



Figure 4: Diagonal rear (right)



Figure 5: Interior - front



Figure 6: Interior - rear



Figure 7: Instrument cluster



Figure 8: Instrument panel



Figure 9: interior 360° view



Figure 10: Cargo area

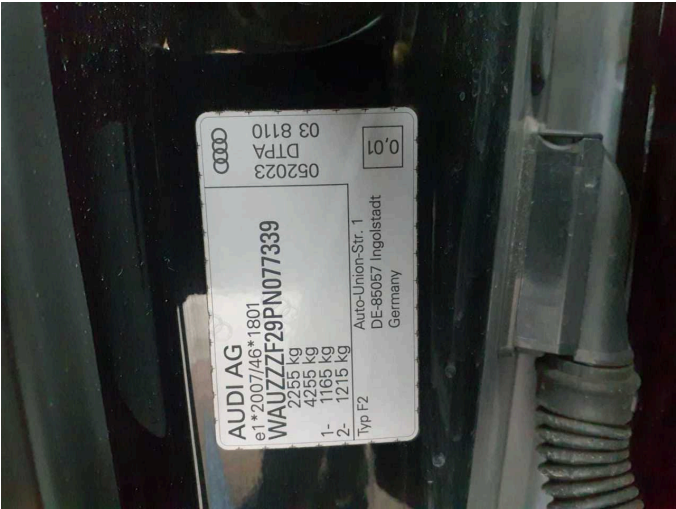


Figure 11: VIN



Figure 12: Mounted tyres



Figure 13: Mounted tyres

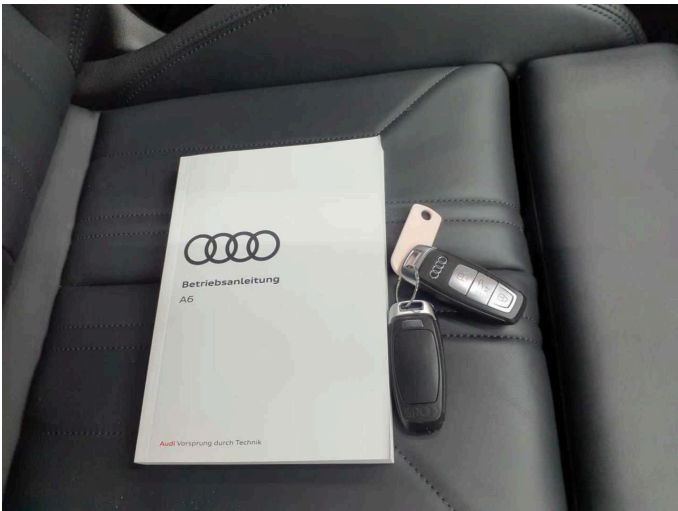


Figure 14: Documents

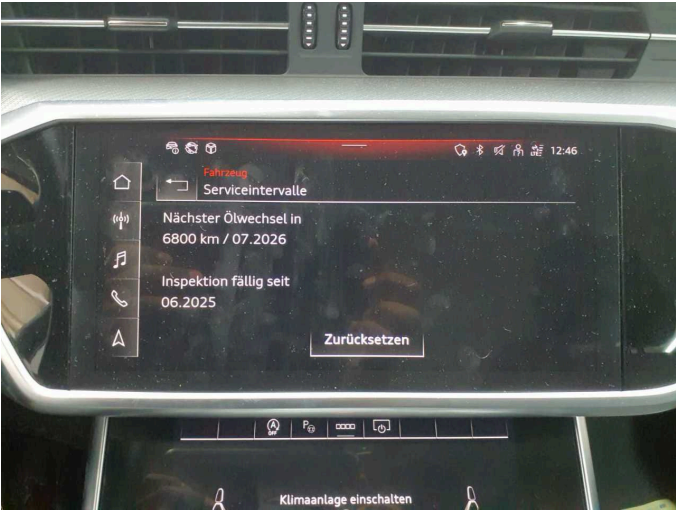


Figure 15: Documents



Figure 16: Additional tyres



Figure 17: Additional tyres



Figure 18: Navigation



Figure 19: Misc.



Figure 20: Misc.



Figure 21: Misc.



Figure 22: Misc.



Figure 23: Misc.



Figure 24: Misc.



Figure 25: Misc.

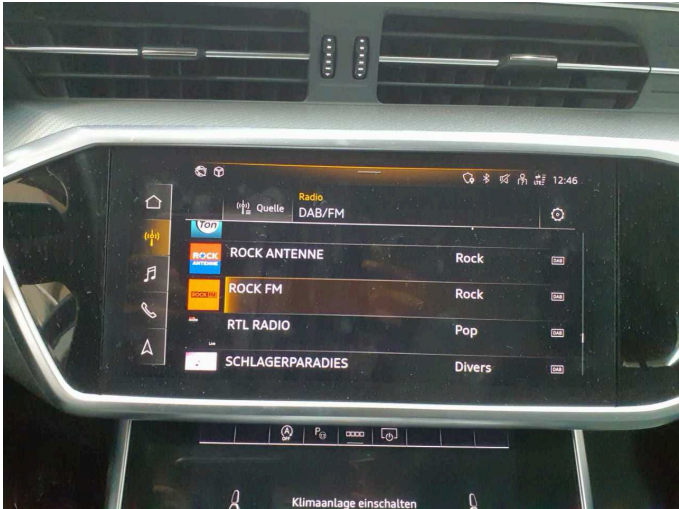


Figure 26: Misc.



Figure 27: Misc.



Figure 28: Misc.



Figure 29: Misc.



Figure 30: Misc.



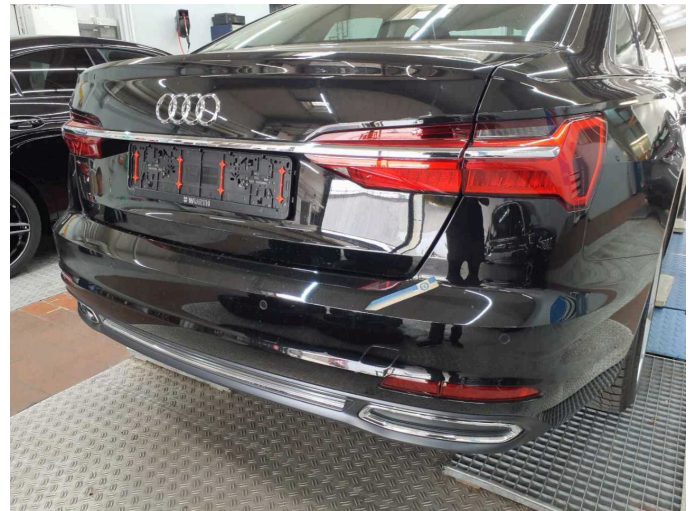
Figure 31: Misc.



Damage 1: Door - front left side: Door edge - Scratch(es) - Smart repair



Damage 1: Door - front left side: Door edge - Scratch(es) - Smart repair



Damage 2: Rear bumper: Rear bumper - Scratch(es) - Smart repair



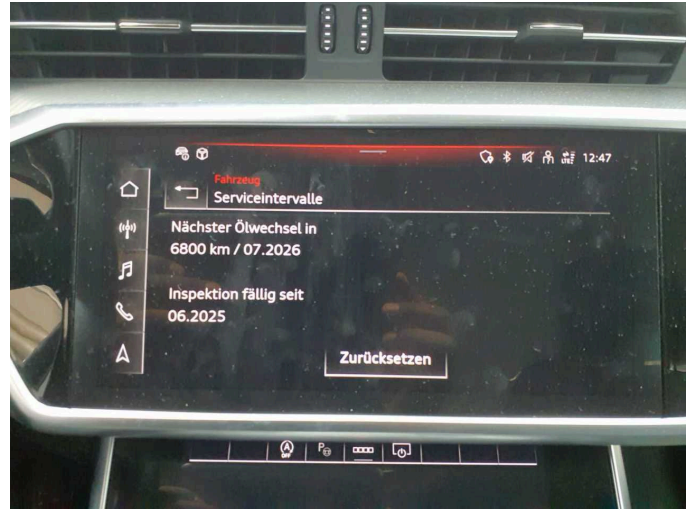
Damage 2: Rear bumper: Rear bumper - Scratch(es) - Smart repair



Damage 3: Sill - right side: Sill (Verkleidung) - dent(s) - Replace



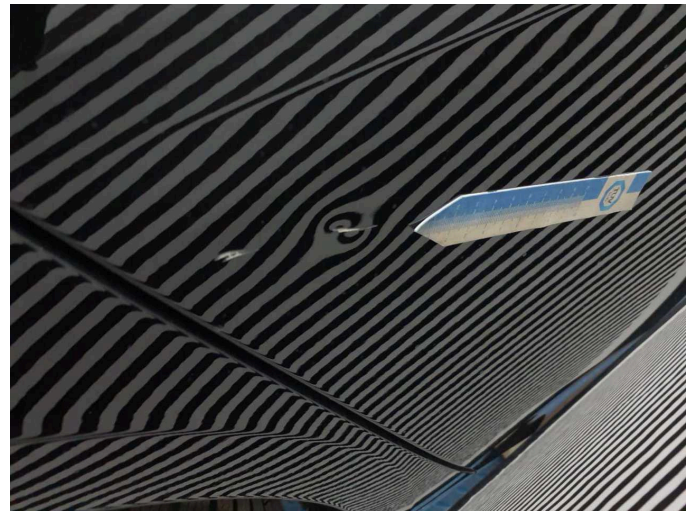
Damage 3: Sill - right side: Sill (Verkleidung) - dent(s) - Replace



Damage 4: Misc.: Inspection / maintenance - Due - Perform



Damage 5: Door - rear right side: Door - Dent / paintcoat damage - Repair and paint



Damage 5: Door - rear right side: Door - Dent / paintcoat damage - Repair and paint



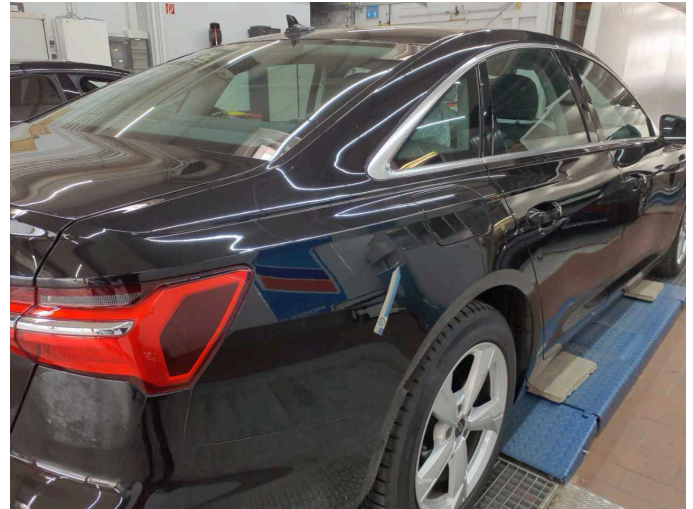
Damage 5: Door - rear right side: Door - Dent / paintcoat damage - Repair and paint



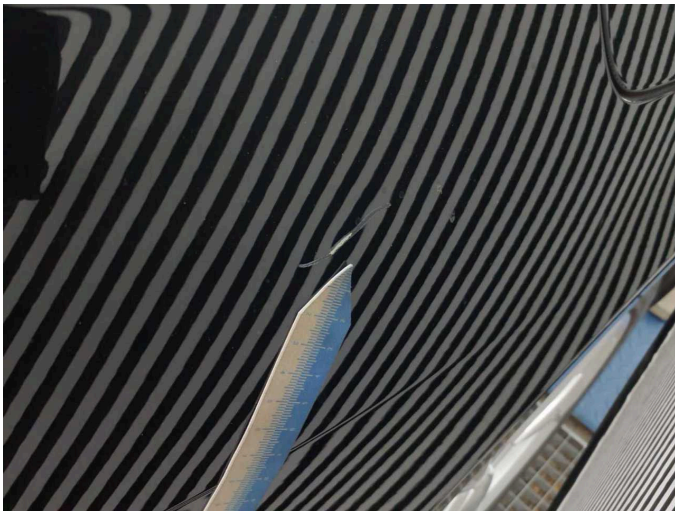
Damage 6: Front bumper: Front bumper - Scratch(es) - Paint



Damage 6: Front bumper: Front bumper - Scratch(es) - Paint



Damage 7: Side panel - rear right side: Side panel - Dent / paintcoat damage - Repair and paint



Damage 7: Side panel - rear right side: Side panel - Dent / paintcoat damage - Repair and paint



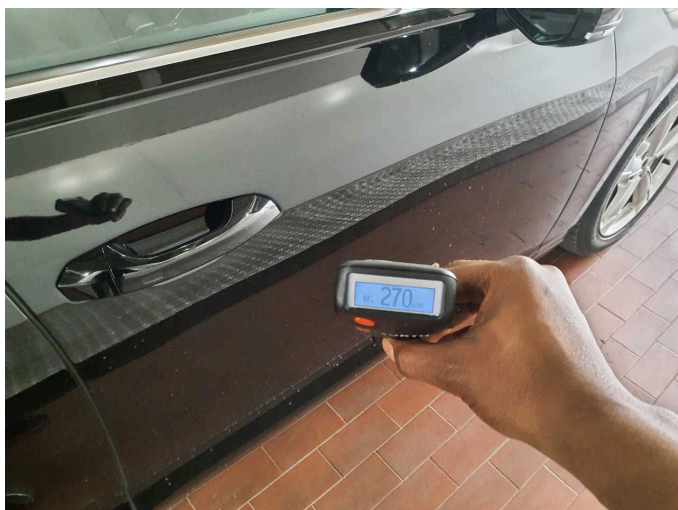
Repainting 1: Door - front left side



Repainting 1: Door - front left side



Repainting 2: Door - front right side



Repainting 2: Door - front right side