



# AUDI A6

## A6 Avant 40 TDI S tronic

VIN NO WAUZZZF29NN064362  
Registration Number 29NN064362



MOT Date	Number of Owners	Number of Keys	Odometer Reading
-	1	2	100972 km
Last Service	Last Service Mileage	First Registration Date	Country First Registered
2025-04-01	91586	2022-07-26	-

### Inspection Report Summary

Customer	BCA Online	Report Number	P20251001132442
Inspection Date / Place	2025-10-01 / Extern	Cosmetic Grade	3

### Vehicle Summary

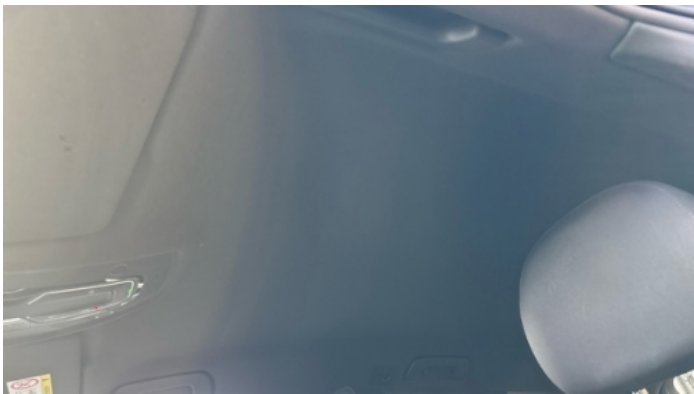
Vehicle Condition	Runner	VAT Type	Qualifying
Fuel Type	Diesel	Road Worthy	Yes
Colour	Grey	Engine Size (cc)	1968
Engine Size	2.0	No of Doors	5
Body Type	Stationwagon / Estate	Drive Train	Front
Seat Colour		No of Seats	5
Seat Covering Name	Schwarz	Seat Covering	Cloth
Charging Cables		WLTP CO2 Emissions	
Gearbox Type	Automatic		

### Vehicle History & Documents

Service Book Available	Computer Print Out Available	Next Service Mileage	km
Previous Usage		Imported	No
Manufacturer Warrenty			











Equipment

Tinted Glass	Trip Computer	Adaptivecruisecontrol	Alloys wheels
Bluetooth telephone interface	Digital Radio	Fatiguewarningsystem	Head up Display
Heated wing mirrors	Remote adjusting wing mirrors	Reversing Camera	Satellite navigation
Stability control	Electrically folding wing mirrors	Emergencybrakeassist	Leather steering wheel
Radio	Rear parking sensors	Trafficsignrecognition	USB Socket
Airbag Status	Anti-lock braking	Diesel particulate filter	Digitaldashboard
Front parking sensors	Headlamp wash/wipe	Highbeamassist	Remote central locking
Roof rails	Split folding rear seats	Distancewarningsystem	Electrictailgate
Laneassist	LED Headlamps	Rain sensitive windscreen wipers	

Equipment Details

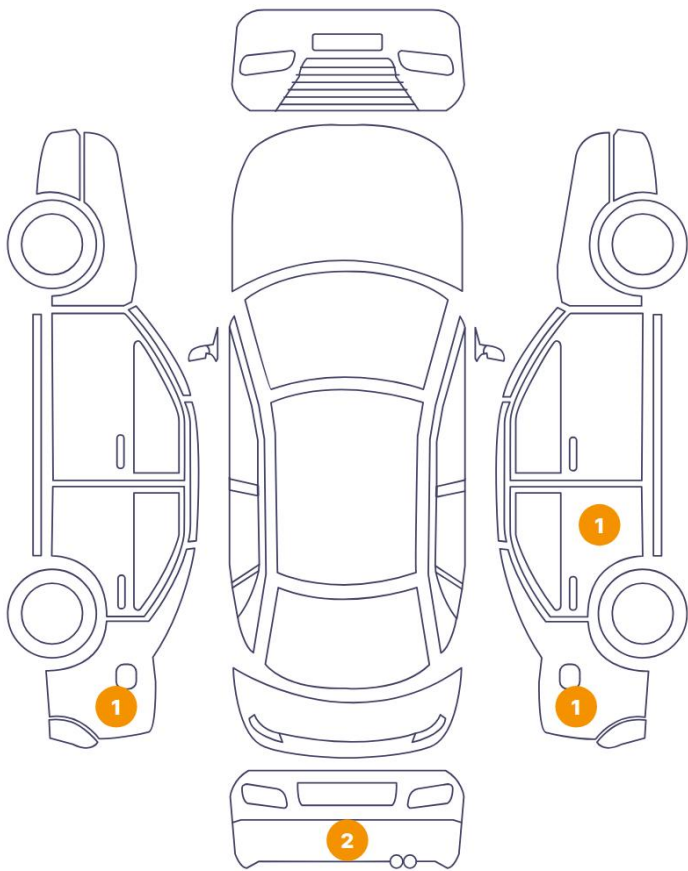
Air Conditioning	Four Zone Climate Control	Alloy Wheel Size	17
Seat Heating	Front		

Wheels & Tyres

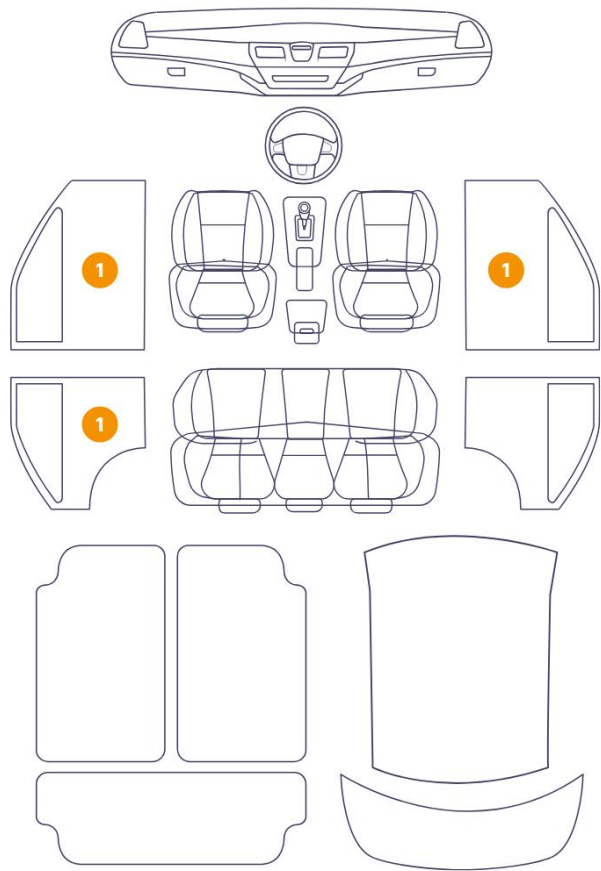
Right Front Tyre Depth	2	Left Front Tyre Depth	2
Right Rear Tyre Depth	3	Left Rear Tyre Depth	3

Cosmetic Damage

5 Schäden



3 Schäden



Component	Damage	Comments
1 Fender / Back Left	Paint / Poor Previous Repair	
2 Panel Filling / Front Right	Interior / Scratched	
3 Door / Back Right	Paint / Scratch / Scuff	
4 Fender / Back Right	Paint / Scratch / Scuff	
5 Bumper / Back	Paint / Scratch / Scuff	
6 Bumper / Back	Paint / Scratch / Scuff	
7 Door Step / Back Left	Interior / Scratched	
8 Panel Filling / Front Left	Interior / Scratched	





1. Fender / Back Left  
Paint / Poor Previous Repair -



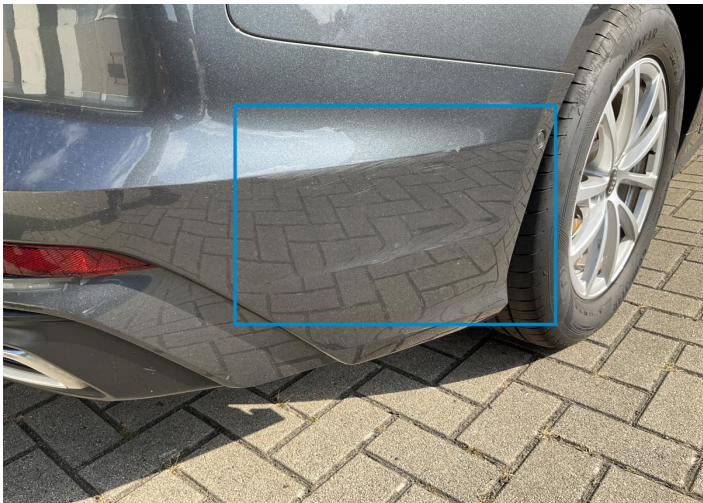
2. Panel Filling / Front Right  
Interior / Scratched -



3. Door / Back Right  
Paint / Scratch / Scuff -



4. Fender / Back Right  
Paint / Scratch / Scuff -



5. Bumper / Back  
Paint / Scratch / Scuff -



6. Bumper / Back  
Paint / Scratch / Scuff -





7. Door Step / Back Left  
Interior / Scratched -



8. Panel Filling / Front Left  
Interior / Scratched -



## Mechanical Condition

### Control Lights

ABS Warning Light	✓	Diesel Particulate Filter Light	✓
Airbag Warning Light	✓	Brake Warning Light	✓
Alternator / Battery	✓	No Dashboard Lights	✓
Service Light	✓	ESP Fault/Traction Control Malfunction Light	✓
Oil Pressure Warning Light	✓	Power Steering Warning Light	✓
Tire Pressure Monitoring System	✓		

### Equipments Test

Central Locking	✓	Main & Spare Keys Functioning	✓
Electric Windows	✓	Navigation System	✓
Audio Equipment	✓	Parking Sensors / Cameras Functioning	✓
AC / Heating System	✓	Other Equipments	✓

### Engine

Engine Status / EML	✓	Engine Leak Visible	✓
Engine Starts	✓		

### Gearbox

Gear Box	✓
----------	---

### Levels

Brakes Fluid	✓	Coolant Fluid	✓
--------------	---	---------------	---

Test Drive Inspection

Brake			
Brake System Anomaly		✓	
Steering Wheel			
Steering   Noise / Anomaly		✓	
Engine			
Engine Noise	✓	The Gears Scratch / Skip / Abnormal Operation	✓
Fume Quantity	✓	Power Loss	✓
General			
Test Driven Status		✓	
✓ <i>No troubles detected, good condition or correct tests, according to vehicle age and mileage</i>			
! <i>Damages or malfunction detected that requires repairs by the buyer</i>			
NA <i>Not applicable</i>			
= <i>Not tested</i>			

Disclaimer

Please also note the "UserGuide condition report", which shows the scope of the vehicle description.

[User Guide](#)