



Expertise

Protocol number: 41294813
Order No. / Reference: 25140106
Inspection date: 29 Aug 2025

Manufacturer: Audi

Model: A6 40 TDI quattro S tronic design

VIN: WAUZZZF26MN097835



Vehicle details	
Manufacturer / Type / Model / Equipment	
Audi A6 40 TDI quattro S tronic design	
Vehicle Identification number	WAUZZZF26MN097835
Mileage (Read)	120,702 km
First registration	22 Jun 2021
Number of holders	1
Next periodical technical inspection	07/2026
(Report not on hand)	
Power / Engine displacement	150 kw / 1,968 ccm
Fuel type / Cylinder	Hybrid Diesel / E / 4
Gearbox / Number of gears	Automatic / 7
Type of drive	All-wheel drive
Type of vehicle	Saloon car
Colour / colour code	Brillantschwarz (Y9B)
Doors / Seats	4 / 4
Upholstery type	Leather
Colour of upholstery	Black



Vehicle details

Maintenance booklet / proof	digital proof / complete	Next maintenance in	27,400 km
Last maintenance on / at	07/2025 at 118,420 km		
Key is / should be	2 / 2	FZG documents	ZB#2 (B) was available (copy), ZB#1 (S) was not available
		Letter No.	GC335919
Previous damage / Accident	Detectable	Repainting	None detectable
Inspection conditions	sufficient	Lifting equipment / pit	yes
Test drive	Not performed	Engine function test	Performed
Manufacturer key number/ type code number	0588 / BTO 00159		
Emission standard	EURO6;WLTP;DG;PI/CI; M, N1 I	Fine dust sticker	
Permitted total weight	2,325 kg	Empty weight	

Tyres

Mounted tyres

#	Tyre size	Type of tyre	Manufacturer	Tread depth
1)	225/55 R18 102Y	Summer tyres on Light alloy	Pirelli	6mm / 6mm
2)	225/55 R18 102Y	Summer tyres on Light alloy	Pirelli	6mm / 6mm

Replacement

Typ	Tyre size	Type of tyre	Manufacturer	Tread depth
	Tirefit	Expiration date 07/2026		

Legend: Tread depth information for tires on the left is in the first place, for tires on the right is in the second place on the axle in the direction of travel

Equipment

Standard equipment

- | | |
|---|---|
| <ul style="list-style-type: none"> • Airbag for driver and front passenger • All-wheel drive "quattro" with ultra technology • Audi connect navigation & infotainment • Audi drive select • Audi pre sense front • Brake light, third • Decorative inlays aluminum fragment • tachometer • Door sills with aluminum inserts front and rear • radio key • Cruise control including speed limiter • Transmission: S tronic 7-speed • Dimmable interior mirror • Interior elements in artificial leather above • ISOFIX and Top Tether child seat attachment for the outer rear seats • Paint finish: Uni • Steering column, manually height and axially adjustable • MMI navigation with MMI touch response • Gloss Package • Progressive steering • Wheel: Tire pressure monitoring indicator • Radio: MMI Radio plus with MMI touch response • Sun visor on driver and passenger side • Start-stop system • Glazing: Rear window, rear door and side windows in clear glass • Central locking | <ul style="list-style-type: none"> • Airbag: Front side airbags and head airbag system • Anti-lock braking system (ABS) • Audi connect emergency call & service m.connect remote & control • Exterior mirror housings in body color • Headlining fabric • Diesel particulate filter (DPF) with nitrogen oxide catalyst and AdBlue tank • Electronic Stabilization Control (ESC) • Automatically opening luggage compartment lid/manually opening luggage compartment lid • Interior lighting • Instrument panel and door trim two-piece single/multi-colored • 2-zone automatic climate control • Headrests (4) • LED headlights • Front center armrest • Ambient lighting package • Non-smoking package • Wheel: Light alloy wheels, multi-spoke design • Wheel: Tire repair kit • Radio accessories: 8 speakers (passive) front and rear • Lane Departure Warning • Glazing: Windscreen in thermal insulation glazing • Electronic immobilizer • Heat-insulating glazing on the sides and rear |
|---|---|

Extra equipment

- | | |
|--|---|
| <ul style="list-style-type: none"> • AdBlue tank with increased filling volume (AdBlue tank with 22 litres filling volume - for diesel vehicles with SCR technology, to reduce nitrogen oxides in the exhaust gas) • Audi virtual cockpit plus (3 individual display options: Dynamic, Sport, and Classic - Operation via the multifunction steering wheel - Configuration of onboard computer values in the tachometer - Display of the navigation map as a 3D terrain model on the high-resolution 12.3-inch Full HD color display - Permanent display of navigation information in the speedometer area when route guidance is active - Break recommendation) • Parking aid plus with surround display (acoustic and visual parking aid at the front, sides, and rear to assist with parking and maneuvering using 12 ultrasonic sensors. A selective visual display shows the distance to detected objects in the upper display, depending on the current steering angle and direction of travel. Upon request, the system is activated automatically as soon as the vehicle approaches a detected obstacle at a speed of less than 10 km/h.) • Steering wheel: 3-spoke leather steering wheel with multifunction and shift paddles (shift paddles allow manual gear changes). | <ul style="list-style-type: none"> • Swiveling trailer coupling with electric release (with swiveling ball head, trailer stabilisation via the electronic stabilisation control (ESC), release via button in the luggage compartment, the integrated, swivelling system socket enables continuous operation of electrical devices in the trailer or caravan while driving) • Electrically adjustable, heated, and folding exterior mirrors with automatic dimming on both sides (including automatic curb-check function for the passenger exterior mirror with integrated LED indicators, including heated windshield washer nozzles, and aspherical mirror glass. The automatic curb-check function lowers the passenger exterior mirror when reverse gear is engaged, giving the driver a better view of the curb.) • Elimination of model name and performance/technology lettering • High beam assistant (within the system's limits, automatically detects the headlights of oncoming traffic, the taillights of other road users, and towns. Depending on the traffic situation, the high beam is automatically switched on or off.) |
|--|---|



- Tour Assistance Package (Adaptive Cruise Control - Adaptive Cruise Control, Speed Limit - Efficiency Control supports the driver in anticipatory and thus fuel-efficient driving - Evasion Control helps the driver steer the vehicle around an obstacle in a critical situation - Turn Control - Emergency Control - High Beam Control - Camera-based Traffic Sign Recognition)
- Radio accessories: Audi sound system (10 speakers including center speaker and subwoofer - 6-channel amplifier - total output of 180 watts)
- Rear view camera (The rear view camera shows the detection area behind the vehicle in the upper display. Dynamic display elements such as a lane calculated based on the steering angle assist with parking or maneuvering.)
- Seat covers in Valcona leather (for sports seats) (seat center panels, seat side bolsters, headrests and front center armrest in Valcona leather, door panel inserts in Alcantara)
- Seats: Front sports seats (with manual adjustment of seat height, seat fore/aft position, seat angle, backrest angle, headrest height and spacing, and seat belt height with pronounced seat side bolsters for better lateral support in curves, extendable thigh support, and electric 4-way lumbar support)
- Front seat heating (heats seat and backrest centre panels; with leather upholstery, sports seats and sports seats plus also seat side bolsters - individually adjustable in several stages for driver and front passenger side on the climate control panel)
- City Assistance Package (Intersection Assistant can warn the driver of detected cross traffic in complex intersection situations. Lane Change Warning helps the driver monitor the blind spot and traffic behind the vehicle. Exit Warning warns of a possible collision with traffic approaching from behind when the vehicle is stationary. Cross Traffic Assistant hi. Audi pre sense 360° offers preventative 360-degree all-round protection (Audi pre sense - front, -rear, -side))
- Business Package (Tour Assistance Package Adaptive Driving Assistant supports the driver with acceleration, braking, maintaining speed and distance, and lane guidance. Adaptive Cruise Control, Cruise Control, Efficiency Assistant supports the driver with predictive parking. Parking aid plus 4-zone automatic climate control. Heated front seats. Audi phone box. Automatically dimming interior mirror. Automatically dimming exterior mirror. Adaptive windshield wipers with integrated washer nozzles. High beam assistant.)
- Seats: 4-way lumbar support (electrically adjustable, horizontally and vertically)
- Seats: Rear seat backrest, split-folding (distinctive outer rear seats, visually matched to the front seats, and an additional central seating option - 3 rear L-shaped headrests, manually height-adjustable, for good rear visibility - three 3-point seat belts - rear seat backrest split 40:20:40 or fully foldable - rear center armrest, one-piece and foldable, with storage compartment)
- Phone: Audi smartphone interface (The Audi smartphone interface (Android Auto and Apple CarPlay) connects your smartphone to your Audi and seamlessly displays your smartphone content directly on the MMI display via USB. Navigation, telephony, music, and selected third-party apps can be conveniently controlled via the MMI touch display and via voice control on your smartphone.)

Brief expert findings

Documents submitted	At the time of the inspection, the registration certificate Part 2 (letter) was available, but the registration certificate Part 1 (certificate) was not. (Copy)
VIN comparison	The vehicle identification number (VIN) was read from the vehicle and its conformity with the submitted documents was verified during the inspection by the undersigned.
Inspection	The inspection conditions were sufficient for the assessment of the vehicle. Lifting equipment and a pit were available for examining the vehicle.
Test drive	No test drive/maneuvering was carried out during the inspection of the vehicle.
Engine function test	An engine test run was performed.

Value reducing factors

No.	Component group	Description
1	Wing mirror - right side	Cap - Scratch(es) - Smart repair
2	Mudguard - left side	Mudguard - left side - dent(s) - Smooth repair work
3	Front bumper	Front bumper (Sandstrahleffekt) - Stone chips - Paint
4	Side panel - rear left side	Side panel - Dent / paintcoat damage - Repair and paint
5	Bonnet	Bonnet - Dent / paintcoat damage - Repair and paint

Wear and tear



No.	Component group	Description
1	Body	Body (Waschstraßenkratzer) - Scratch(es) - No deduction
2	Door - rear left side	Door - Abrasion - No deduction
3	Door - rear right side	Door - Dent / paintcoat damage - No deduction

The vehicle shows signs of wear commensurate with its age and use.

Previous damages

No.	Previous damage	Extent of damage (Net)
1	Rear, Provided by user / customer, from 7 Sept 2022	3.908,96 €

Order/Scope of order

The order was placed to prepare a sales report for the vehicle described. This includes the following:

- Description of core relevant information about the vehicle
- Documentation of equipment features
(Delivery by third-party service providers)
- Documentation of damage, defects, missing parts
- Documentation of previous damage, unrepaired previous damage, repainting
- a brief visual or functional inspection of the equipment details if possible.
(Functional tests of driver assistance systems are not included in the scope of services!)
- a photo documentation of the vehicle

Basis for the order

This product is based on the Alphabet Fuhrpark GmbH guidelines for vehicle returns and valuations. The expert makes the explicit findings in each individual case objectively within the framework of the specified standards based on his or her own expertise.

The vehicle inspection takes place in a disassembled state.

Damage or defects that can only be detected during disassembly/diagnosis work or through advanced knowledge remain within the scope of the prognosis risk. An extended risk exists for concealed defects caused by fraudulent deception and not identifiable by the expert.

Damage or defects resulting from normal use or wear and tear of the vehicle will be accepted according to the applicable standard.

There was no explicit identification or monetary consideration of the expected features within the product.

Features which in their nature and severity slightly exceed normal use but do not constitute unacceptable damage will be documented and identified under signs of use if necessary.

Damage or defects which, according to the underlying standard, can no longer be attributed to normal use or wear and tear are listed in the product under "Depreciating Factors".

Depending on the product specification, a monetary ID can be provided. If this takes place, the costs can be 100% d or pro rata depending on the vehicle's age and mileage.

Previous damages

According to available information previous damages were repaired at the vehicle. Traces of repairs, which allow conclusions about the area of repair, were not recognizable during the inspection.

Comments

Wartungshistorie gemäß Auftraggeber Informationen.



Figure 1: Diagonal front (left)



Figure 2: Diagonal front (right)



Figure 3: Diagonal rear (left)



Figure 4: Diagonal rear (right)



Figure 5: Interior - front



Figure 6: Interior - rear



Figure 7: Instrument cluster



Figure 8: Instrument panel



Figure 9: interior 360° view



Figure 10: Cargo area



Figure 11: VIN



Figure 12: Mounted tyres



Figure 13: Documents



Figure 14: Navigation



Figure 15: Misc.



Figure 16: Misc.



Figure 17: Misc.



Figure 18: Misc.



Figure 19: Misc.

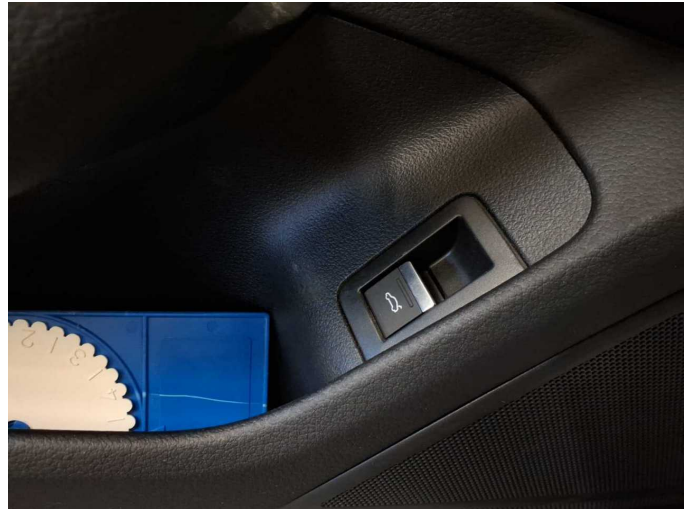


Figure 20: Misc.



Figure 21: Misc.

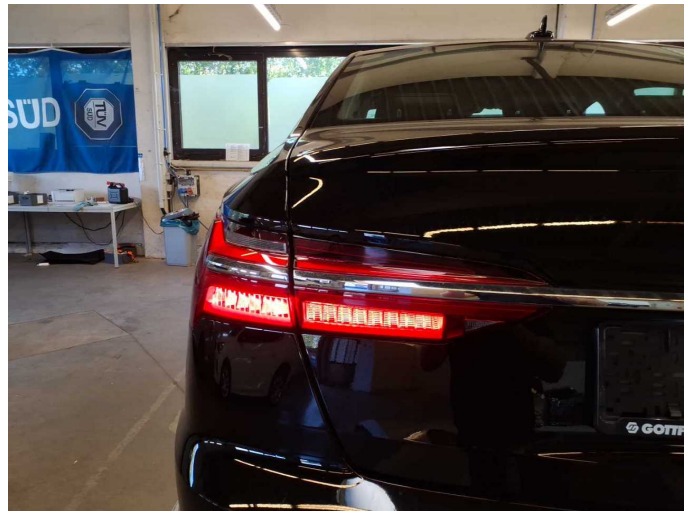


Figure 22: Misc.



Figure 23: Misc.



Figure 24: Misc.



Figure 25: Misc.



Figure 26: Misc.



Damage 1: Wing mirror - right side: Cap - Scratch(es) - Smart repair



Damage 1: Wing mirror - right side: Cap - Scratch(es) - Smart repair



Damage 2: Mudguard - left side: Mudguard - left side - dent(s) - Smooth repair work



Damage 2: Mudguard - left side: Mudguard - left side - dent(s) - Smooth repair work



Damage 3: Front bumper: Front bumper (Sandstrahleffekt) - Stone chips - Paint



Damage 3: Front bumper: Front bumper (Sandstrahleffekt) - Stone chips - Paint



Damage 3: Front bumper: Front bumper (Sandstrahleffekt) - Stone chips - Paint



Damage 3: Front bumper: Front bumper (Sandstrahleffekt) - Stone chips - Paint



Damage 4: Side panel - rear left side: Side panel - Dent / paintcoat damage - Repair and paint



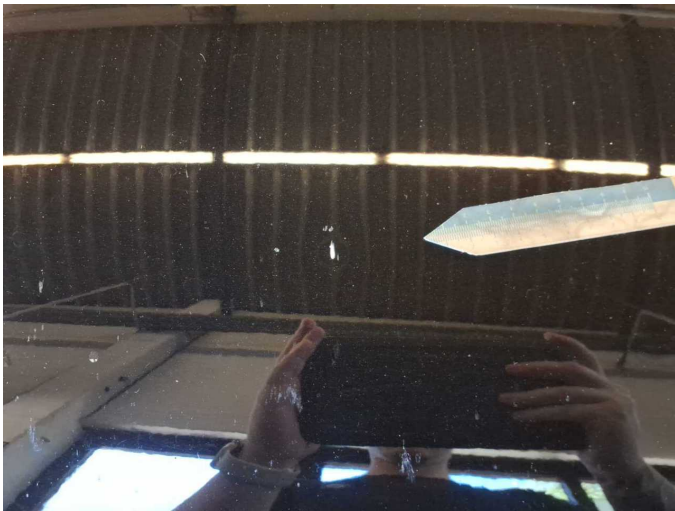
Damage 4: Side panel - rear left side: Side panel - Dent / paintcoat damage - Repair and paint



Damage 4: Side panel - rear left side: Side panel - Dent / paintcoat damage - Repair and paint



Damage 5: Bonnet: Bonnet - Dent / paintcoat damage - Repair and paint



Damage 5: Bonnet: Bonnet - Dent / paintcoat damage - Repair and paint



Damage 5: Bonnet: Bonnet - Dent / paintcoat damage - Repair and paint



Wartungshistorie

(gemäß Auftraggeber Informationen)

Fahrgestellnummer: WAUZZZF26MN097835
Hersteller / Modell: AUDI AUDI A6 40 TDI quattro S tronic design

Datum	KM-Stand	Beschreibung
22.07.2025	118.420	Bremsbelagfühler ern; Bremse Sonstiges; Bremsklötze hinten; Bremsklötze vorne; Bremsscheiben + Klötze h; Bremsscheiben + Klötze v; Bremsscheiben hinten; Bremsscheiben vorne; Getriebeöl ern/prüfen; Kraftstofffilter ern; Motoröl b. Wartung; Ölfilter ern; Regelwartungsdienst; Reparatur Sonstiges; Wartung Sonstiges
05.06.2025	115.500	Bremsflüssigkeit; Bremsflüssigkeit ern
01.07.2024	88.693	HU + AU; Luftfiltereinsatz ern; Motoröl b. Wartung; Ölfilter ern; Regelwartungsdienst; Wartung Sonstiges
15.06.2023	61.700	Bremsbelagfühler ern; Bremse Sonstiges; Bremsflüssigkeit; Bremsflüssigkeit ern; Bremsklötze hinten; Bremsklötze vorne; Bremsscheiben + Klötze h; Bremsscheiben + Klötze v; Bremsscheiben hinten; Bremsscheiben vorne; Getriebeöl ern/prüfen; Kraftstofffilter ern; Motoröl b. Wartung; Ölfilter ern; Regelwartungsdienst; Reparatur Sonstiges; Wartung Sonstiges
28.06.2022	30.511	Motoröl b. Wartung; Ölfilter ern; Regelwartungsdienst; Wartung Sonstiges