



AUDI A6
A6 Avant 50 TFSI e quattro S tronic

VIN NO WAUZZZF25NN019855
Registration Number 25NN019855



MOT Date	Number of Owners	Number of Keys	Odometer Reading
2026-11-01	1	2	137801 km
Last Service	Last Service Mileage	First Registration Date	Country First Registered
2024-11-19	134058	2021-12-20	Germany

Inspection Report Summary

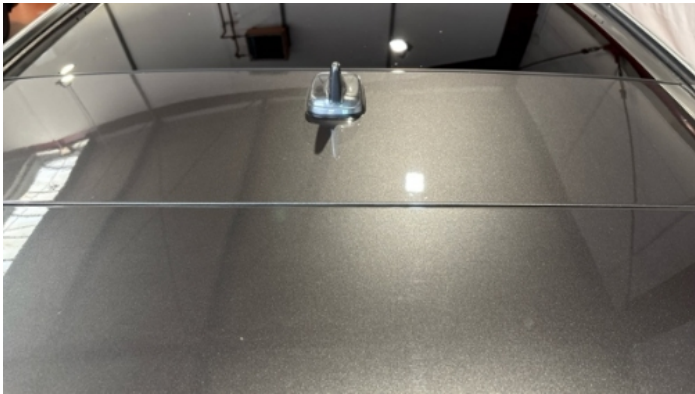
Customer	BCA Online	Report Number	P20250730142001
Inspection Date / Place	2025-07-30 / BCA Oberndorf	Cosmetic Grade	2

Vehicle Summary

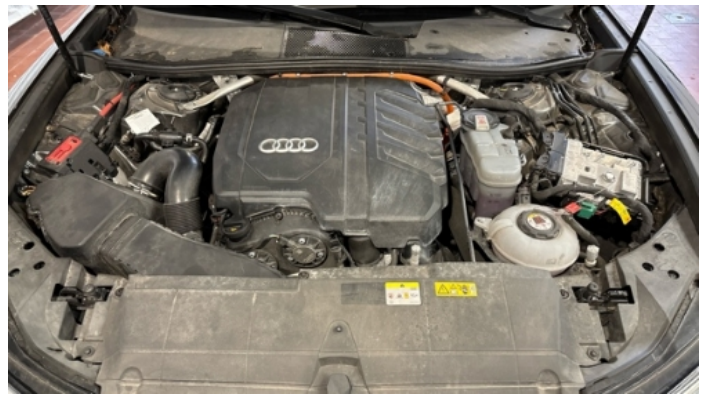
Vehicle Condition	Runner	VAT Type	Qualifying
Fuel Type	Plug - in Hybrid Electric Vehicle Petrol	Road Worthy	Yes
Colour	Grey	Engine Size (cc)	1984
Engine Size	2.0	No of Doors	5
Body Type	Stationwagon / Estate	Drive Train	All-Wheel-Drive permanent
Seat Colour		No of Seats	5
Seat Covering Name	Braun	Seat Covering	Leather
Charging Cables	OUC + Type 2	NEDC CO2 Rating (q/km)	34
Gearbox Type	Automatic		

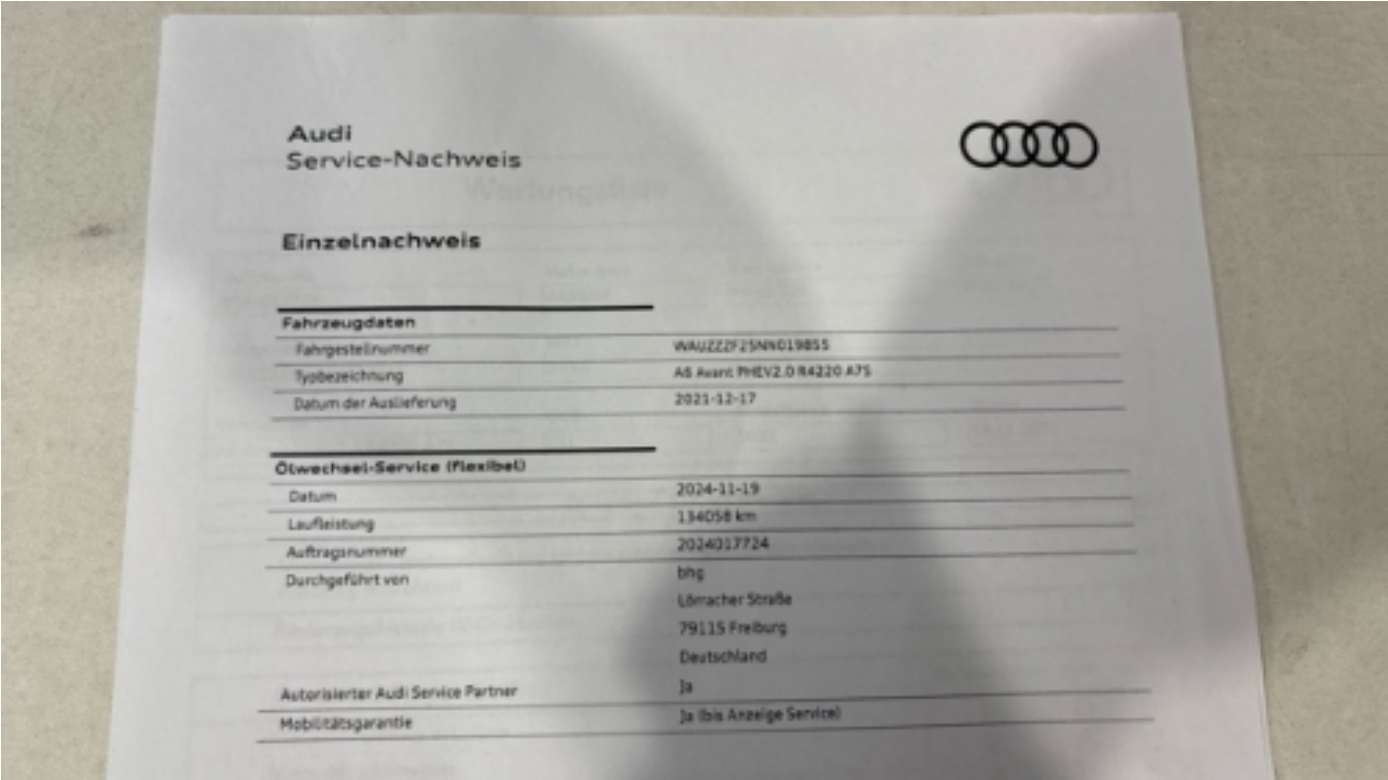
Vehicle History & Documents

Service Book Available	Present	Next Service Mileage	km
Previous Usage		Imported	No
Manufacturer Warrenty			









Equipment

Tinted Glass	Traffic sign recognition	Airbag Status	Ambient lighting
Anti-lock braking	Bluetooth telephone interface	Digital Radio	Fatigue warning system
Heated wing mirrors	Remote central locking	Roof rails	Split folding rear seats
Sunroof	Distance warning system	Electric tailgate	Keyless Entry
Leather steering wheel	Radio	Tow ball	USB Socket
Alloys wheels	Android Auto	Apple CarPlay	Cruise control
Digital dashboard	Front parking sensors	Remote adjusting wing mirrors	Reversing Camera
Satellite navigation	Stability control	Central locking	Electrically folding wing mirrors
Emergency brake assist	Lane assist	LED Headlamps	Rear parking sensors

Equipment Details

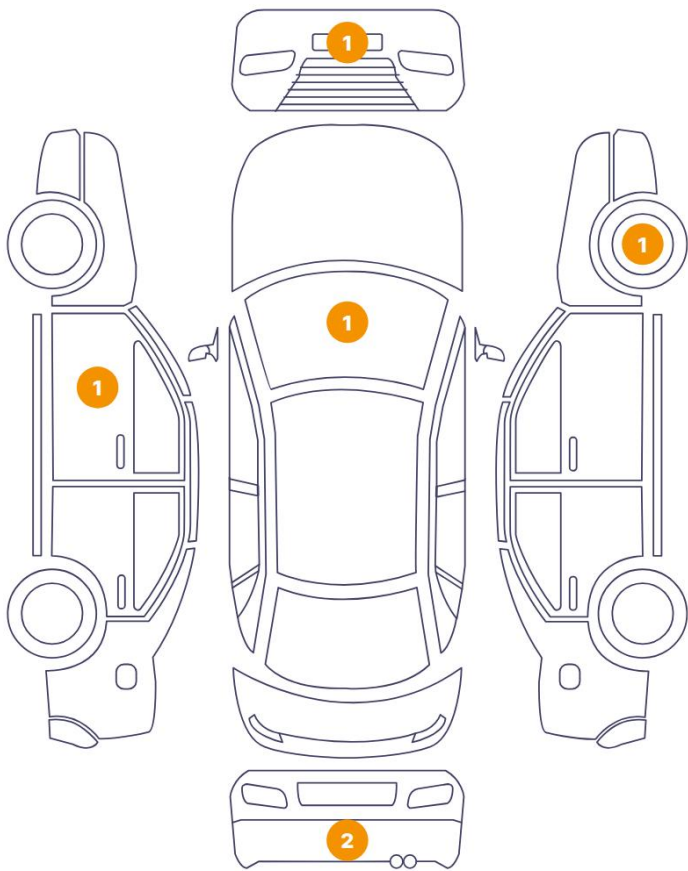
Tow Ball Type	Pivoted	Air Conditioning	Four Zone Climate Control
Alloy Wheel Size	18	Extra Wheel / Tyre Set	Summer Tyres - Alloy
Seat Heating	Front	Sunroof Type	Opening Panoramic

Wheels & Tyres

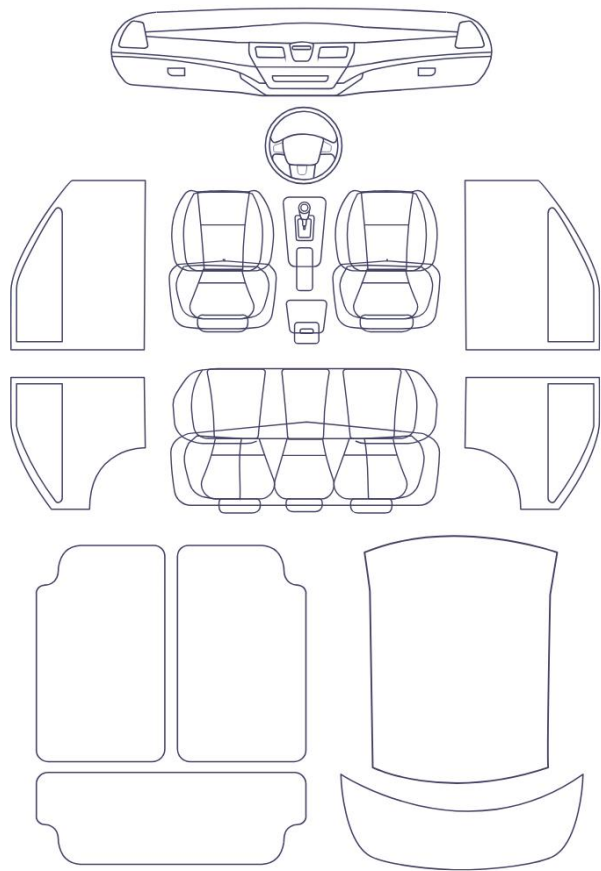
Extra Wheel - 1 Tyre Depth	5	Extra Wheel - 2 Tyre Depth	5
Extra Wheel - 3 Tyre Depth	3	Extra Wheel - 4 Tyre Depth	3
Right Front Tyre Depth	8	Left Front Tyre Depth	8
Right Rear Tyre Depth	5	Left Rear Tyre Depth	5

Cosmetic Damage

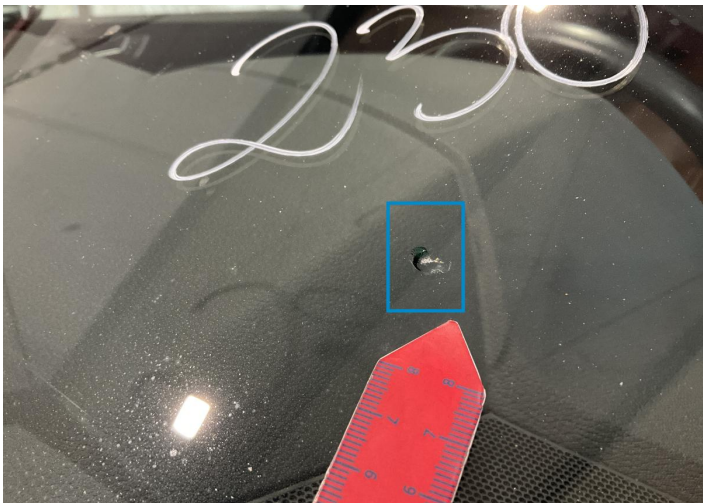
6 Schäden



0 Schäden



Component	Damage	Comments
1 Windshield / Front	Glass Break / Impact	
2 Bumper / Front	Paint / Scratch / Scuff	
3 Mirror / Front Left	Paint / Scratch / Line	
4 Bumper / Back	Paint / Scratch / Scuff	
5 Corner Bumper / Back Right	Paint / Scratch / Line	
6 Rim / Front Right	Paint / Stone Chip	



1. Windshield / Front
Glass Break / Impact -



2. Bumper / Front
Paint / Scratch / Scuff -



3. Mirror / Front Left
Paint / Scratch / Line -



4. Bumper / Back
Paint / Scratch / Scuff -



5. Corner Bumper / Back Right
Paint / Scratch / Line -



6. Rim / Front Right
Paint / Stone Chip -

Mechanical Condition

Control Lights

ABS Warning Light	✓	ESP Fault/Traction Control Malfunction Light	✓
Airbag Warning Light	✓	Oil Pressure Warning Light	✓
Brake Warning Light	✓	Power Steering Warning Light	✓
Alternator / Battery	✓	All - wheel Drive	✓
No Dashboard Lights	✓	Display Defect	✓
Service Light	✓	Tire Pressure Monitoring System	✓

Engine

Engine Status / EML	✓	Engine Leak Visible	✓
Engine Starts	✓		

Gearbox

Gear Box	✓
----------	---

Levels

Brakes Fluid	✓	Coolant Fluid	✓
--------------	---	---------------	---

Equipments Test

Central Locking	✓	Main & Spare Keys Functioning	✓
Electric Windows	✓	Navigation System	✓
Audio Equipment	✓	Parking Sensors / Cameras Functioning	✓
AC / Heating System	✓	Other Equipments	✓

Hybrid/EV

Charge Lead Condition	✓	Charge Port Condition	✓
Hybrid System Fault	✓		

Test Drive Inspection

Engine			
Engine Noise	✓	The Gears Scratch / Skip / Abnormal Operation	✓
Fume Quantity	✓	Power Loss	✓
Brake			
Brake System Anomaly	✓		
Steering Wheel			
Steering Noise / Anomaly	✓		
General			
Test Driven Status	Not Performed		
✓	No troubles detected, good condition or correct tests, according to vehicle age and mileage		
!	Damages or malfunction detected that requires repairs by the buyer		
NA	Not applicable		
☐	Not tested		

Disclaimer

Please also note the "UserGuide condition report", which shows the scope of the vehicle description.

[User Guide](#)