



Expertise

Protocol number: 41560029  
Order No. / Reference: 25198238  
Inspection date: 15 Sept 2025

Manufacturer: Audi	Model: A6 Avant 40 TDI quattro S tronic sport
VIN: WAUZZZF25NN007236	



Vehicle details	
Manufacturer / Type / Model / Equipment	
Audi A6 Avant 40 TDI quattro S tronic sport	
Vehicle Identification number	WAUZZZF25NN007236
Mileage (Read)	123,979 km
First registration	9 Aug 2021
Number of holders	2
Power / Engine displacement	150 kw / 1,968 ccm
Fuel type / Cylinder	Hybrid Diesel / E / 4
Gearbox / Number of gears	Automatic / 7
Type of drive	All-wheel drive
Type of vehicle	Station wagon
Colour / colour code	Brillantschwarz
Doors / Seats	5 / 5
Upholstery type	Cloth / leather combination
Colour of upholstery	Black-Dark grey



## Vehicle details

<b>Maintenance booklet / proof</b>	digital proof / complete	<b>Next maintenance in</b>	24,100 km
<b>Last maintenance on / at</b>	06/2025 at 118,209 km		
<b>Key is / should be</b>	2 / 2	<b>FZG documents</b>	ZB#2 (B) was available (copy), ZB#1 (S) was not available
		<b>Letter No.</b>	GC429196
<b>Previous damage / Accident</b>	Detectable	<b>Repainting</b>	None detectable
<b>Inspection conditions</b>	sufficient	<b>Lifting equipment / pit</b>	yes
<b>Test drive</b>	Not performed	<b>Engine function test</b>	Performed
<b>Manufacturer key number/ type code number</b>	0588 / BTA 01752		
<b>Emission standard</b>	EURO6;WLTP;AP;PI/CI; M, N1 I	<b>Fine dust sticker</b>	
<b>Permitted total weight</b>	2,425 kg	<b>Empty weight</b>	

## Tyres

### Mounted tyres

#	Tyre size	Type of tyre	Manufacturer	Tread depth
1)	245/45 R19 102Y	Summer tyres on Light alloy	Continental	3mm / 3mm
2)	245/45 R19 102Y	Summer tyres on Light alloy	Continental	4mm / 4mm

### Additional tyres

#	Tyre size	Type of tyre	Manufacturer	Tread depth
1)	225/60 R17 99H	Winter tyres on Light alloy	Pirelli	6mm / 6mm
2)	225/60 R17 99H	Winter tyres on Light alloy	Pirelli	6mm / 6mm

### Replacement

Typ	Tyre size	Type of tyre	Manufacturer	Tread depth
N	145/65 R20 105M	All-season tyres on Steel	Sonstige	4 mm

**Legend:** Tread depth information for tires on the left is in the first place, for tires on the right is in the second place on the axle in the direction of travel

## Equipment

### Standard equipment

- AdBlue tank (12 liters)
- Airbag: Front side airbags and head airbag system
- Anti-lock braking system (ABS)
- Audi connect emergency call & service m.connect remote & control
- Exterior mirrors electrically adjustable and heated
- Brake light, third
- Roof rails in aluminum
- Diesel particulate filter (DPF) with nitrogen oxide catalyst and AdBlue tank
- Electronic Stabilization Control (ESC)
- radio key
- Cruise control including speed limiter
- Interior lighting
- ISOFIX and Top Tether child seat attachment for the outer rear seats
- Paint finish: Uni
- Steering column, manually height and axially adjustable
- MMI navigation with MMI touch response
- Non-smoking package
- Wheel: Tire pressure monitoring indicator
- Radio: MMI Radio plus with MMI touch response
- Rail system with fixing set
- Seats: 4-way lumbar support
- Seats: Front sports seats
- Lane Departure Warning
- Glazing: Windscreen with thermal insulation and acoustic glazing
- Electronic immobilizer
- Central locking
- Airbag for driver and front passenger
- All-wheel drive "quattro" with ultra technology
- Audi connect navigation & infotainment
- Audi drive select
- Audi pre sense front
- Exterior mirror housings in body color
- Headlining fabric
- Decorative inlays aluminum fragment
- tachometer
- Door sills with aluminum inserts front and rear
- Driver information system with color display
- Luggage compartment lid, electrically opening and closing
- Transmission: S tronic 7-speed
- Dimmable interior mirror
- 2-zone automatic climate control
- Headrests (4)
- LED headlights
- Front center armrest
- Gloss Package
- Progressive steering
- Wheel: Tire repair kit
- Radio accessories: 8 speakers (passive) front and rear
- Seat covers in fabric
- Seats: Rear seat backrest, split folding Avant
- Sun visor on driver and passenger side
- Start-stop system
- Glazing: Rear window, rear door and side windows in clear glass
- Heat-insulating glazing on the sides and rear

### Extra equipment

- Swiveling trailer coupling with electric release (with swiveling ball head, trailer stabilisation via the electronic stabilisation control (ESC), release via button in the luggage compartment, the integrated, swivelling system socket enables continuous operation of electrical devices in the trailer or caravan while driving)
- Decorative insert in matt brushed dark aluminum (for dashboard, door panels and center console; including aluminum-look surrounds)
- High beam assistant (within the system's limits, automatically detects the headlights of oncoming traffic, the taillights of other road users, and towns. Depending on the traffic situation, the high beam is automatically switched on or off.)
- Head-up display (projects the speed and other driver-relevant information from optional equipment such as assistance systems and navigation, as well as warnings, into the driver's direct field of vision; height adjustable; enables high-contrast, multi-color display with reduced distraction from the road)
- Electrically adjustable, heated, and folding exterior mirrors with automatic dimming on both sides (including automatic curb-check function for the passenger exterior mirror with integrated LED indicators, including heated windshield washer nozzles, and aspherical mirror glass. The automatic curb-check function lowers the passenger exterior mirror when reverse gear is engaged, giving the driver a better view of the curb.)
- Parking aid plus with surround display (acoustic and visual parking aid at the front, sides, and rear to assist with parking and maneuvering using 12 ultrasonic sensors. A selective visual display shows the distance to detected objects in the upper display, depending on the current steering angle and direction of travel. Upon request, the system is activated automatically as soon as the vehicle approaches a detected obstacle at a speed of less than 10 km/h.)
- Fuel tank (73 liters) (fuel tank for 73 liters of petrol/diesel fuel)



- Tour Assistance Package (Adaptive Cruise Control - Adaptive Cruise Control, Speed Limit - Efficiency Control supports the driver in anticipatory and thus fuel-efficient driving - Evasion Control helps the driver steer the vehicle around an obstacle in a critical situation - Turn Control - Emergency Control - High Beam Control - Camera-based Traffic Sign Recognition)
- S line sports package (5-spoke alloy wheels (S-Design), 8.5J x 19 with 245/45 R19 tires, sports suspension, front and rear illuminated entry lights, front with S lettering, S line emblem on the fender, 3-spoke leather steering wheel with multifunction and gearshift, steering wheel and selector lever knob with S emblem in premium leather, S line seat covers in sequence fabric/leather combination with S embossing on the front seat backrests, dark brushed aluminum decorative inserts, interior, dashboard and headliner in black, footrest and pedals in stainless steel, floor mats)
- Wheel: Spare wheel, space-saving
- Radio accessories: DVD drive (DVD drive installed in the glove compartment, supports MP3, WMA and AAC)
- Seat covers in Sequence fabric/leather combination with S-embossing (for front sports seats: -Seat center panels in Sequence fabric in black -Seat side bolsters and headrest center panels in front in black leather with contrasting stitching -with S-embossing in the front seat backrests)
- Lane change warning including Audi pre sense rear, exit warning, and rear cross-traffic assist (Lane change warning helps the driver monitor blind spots and traffic behind the vehicle. Exit warning warns of a potential collision when the door is opened while the vehicle is stationary. Rear cross-traffic assist Audi pre sense rear uses data from the radar sensors.)
- Glazing: Privacy glazing (tinted windows) (rear window, rear door and side windows tinted)
- Ambient lighting package (in addition to the standard interior lighting: - Ambient fabric lighting of the front/rear doors - Approach lighting from the outside door handles at the front/rear - Ambient lighting of the instrument panel)
- Business Package (Tour Assistance Package Adaptive Driving Assistant supports the driver with acceleration, braking, maintaining speed and distance, and lane guidance. Adaptive Cruise Control, Cruise Control, Efficiency Assistant supports the driver with predictive parking. Parking aid plus 4-zone automatic climate control. Heated front seats. Audi phone box. Automatically dimming interior mirror. Automatically dimming exterior mirror. Adaptive windshield wipers with integrated washer nozzles. High beam assistant.)
- Package: Storage package (2 cup holders in the rear center armrest, luggage compartment net for securing to the lashing eyes on the luggage compartment floor)
- Wheel: Light alloy wheels 10-spoke dynamic design (8.5 J x 19 with tires 245/45 R 19)
- Radio accessories: Audi sound system (10 speakers including center speaker and subwoofer - 6-channel amplifier - total output of 180 watts)
- Front seat heating (heats seat and backrest centre panels; with leather upholstery, sports seats and sports seats plus also seat side bolsters - individually adjustable in several stages for driver and front passenger side on the climate control panel)
- Phone: Audi smartphone interface (The Audi smartphone interface (Android Auto and Apple CarPlay) connects your smartphone to your Audi and seamlessly displays your smartphone content directly on the MMI display via USB. Navigation, telephony, music, and selected third-party apps can be conveniently controlled via the MMI touch display and via voice control on your smartphone.)

## Brief expert findings

Documents submitted	At the time of the inspection, the registration certificate Part 2 (letter) was available, but the registration certificate Part 1 (certificate) was not. (Copy)
VIN comparison	The vehicle identification number (VIN) was read from the vehicle and its conformity with the submitted documents was verified during the inspection by the undersigned.
Inspection	The inspection conditions were sufficient for the assessment of the vehicle. Lifting equipment and a pit were available for examining the vehicle.
Test drive	No test drive/maneuvering was carried out during the inspection of the vehicle.
Engine function test	An engine test run was performed.

## Value reducing factors

No.	Component group	Description
1	Documents	Log book - Incomplete - Replace
2	Trim / covers	C-pillar - trim - interior, right side - Scratched - Loss in value
3	Wheel / tyres	Alloy rim - front right side - Scratched - Loss in value
4	Door - rear right side	Door edge - Scratched - Smart repair
5	Boot lid / rear door	Boot lid - Scratched - Smart repair



No.	Component group	Description
6	Side panel - rear right side	Side panel - Scratched - Smart repair
7	Side panel - rear right side	Sill - Dent / paintcoat damage - Smart repair
8	Side panel - rear left side	Sill - Scratched - Smart repair
9	Wheel / tyres	Alloy rim - rear right side - Scratched - Loss in value
10	Rear bumper	Spoiler - Scratched - Replace
11	Front bumper	Front bumper - Scratched - Paint
12	Rear bumper	Rear bumper - Scratched - Paint
13	Door - front left side	Door - Scratched - Paint
14	Bonnet	Bonnet - Scratched - Paint

### Wear and tear

No.	Component group	Description
1	Vehicle glazing	Windscreen - Scratch(es) - No deduction
2	Front bumper	Spoiler - Scratched - No deduction
3	Door - front right side	Door edge - Scratched - No deduction
4	Trim / covers	Boot lid - interior trim - Scratched - No deduction
5	Door - rear right side	Brightware - upper - Scratched - No deduction
6	Boot lid / rear door	Rear spoiler - Scratched - No deduction

The vehicle shows signs of wear commensurate with its age and use.

### Previous damages

No.	Previous damage	Extent of damage (Net)
1	Front, Provided by user / customer, from 27 Feb 2025	1.899,14 €

### Order/Scope of order

The order was placed to prepare a sales report for the vehicle described. This includes the following:

- Description of core relevant information about the vehicle
- Documentation of equipment features  
(Delivery by third-party service providers)
- Documentation of damage, defects, missing parts
- Documentation of previous damage, unrepaired previous damage, repainting
- a brief visual or functional inspection of the equipment details if possible.  
(Functional tests of driver assistance systems are not included in the scope of services!)
- a photo documentation of the vehicle



## Basis for the order

This product is based on the Alphabet Fuhrpark GmbH guidelines for vehicle returns and valuations. The expert makes the explicit findings in each individual case objectively within the framework of the specified standards based on his or her own expertise.

The vehicle inspection takes place in a disassembled state.

Damage or defects that can only be detected during disassembly/diagnosis work or through advanced knowledge remain within the scope of the prognosis risk. An extended risk exists for concealed defects caused by fraudulent deception and not identifiable by the expert.

Damage or defects resulting from normal use or wear and tear of the vehicle will be accepted according to the applicable standard.

There was no explicit identification or monetary consideration of the expected features within the product.

Features which in their nature and severity slightly exceed normal use but do not constitute unacceptable damage will be documented and identified under signs of use if necessary.

Damage or defects which, according to the underlying standard, can no longer be attributed to normal use or wear and tear are listed in the product under "Depreciating Factors".

Depending on the product specification, a monetary ID can be provided. If this takes place, the costs can be 100% d or pro rata depending on the vehicle's age and mileage.

## Previous damages

According to available information previous damages were repaired at the vehicle. Traces of repairs, which allow conclusions about the area of repair, were not recognizable during the inspection.

## Comments

- Winterradsatz ist kein Bestandteil des Auslieferumfangs.





**Figure 1:** Diagonal front (left)



**Figure 2:** Diagonal front (right)



**Figure 3:** Diagonal rear (left)



**Figure 4:** Diagonal rear (right)



**Figure 5:** Interior - front



**Figure 6:** Interior - rear





Figure 7: Instrument cluster



Figure 8: Instrument panel



Figure 9: Interior 360° view



Figure 10: Cargo area

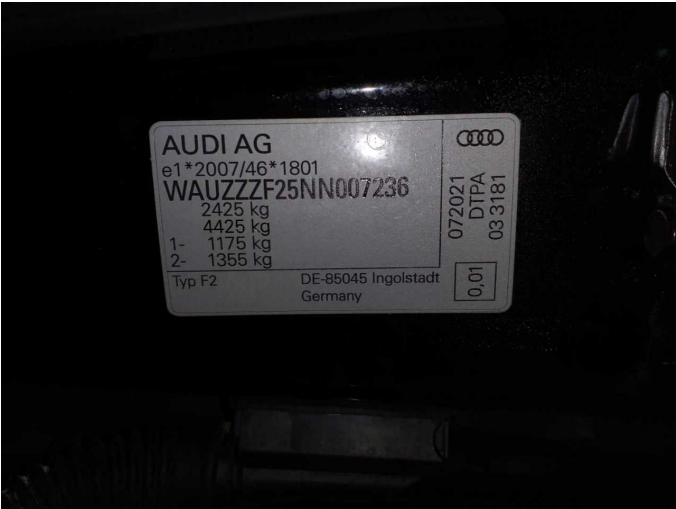


Figure 11: VIN



Figure 12: Mounted tyres





Figure 13: Documents



Figure 14: Documents



Figure 15: Documents



Figure 16: Additional tyres



Figure 17: Additional tyres



Figure 18: Navigation



Figure 19: Misc.

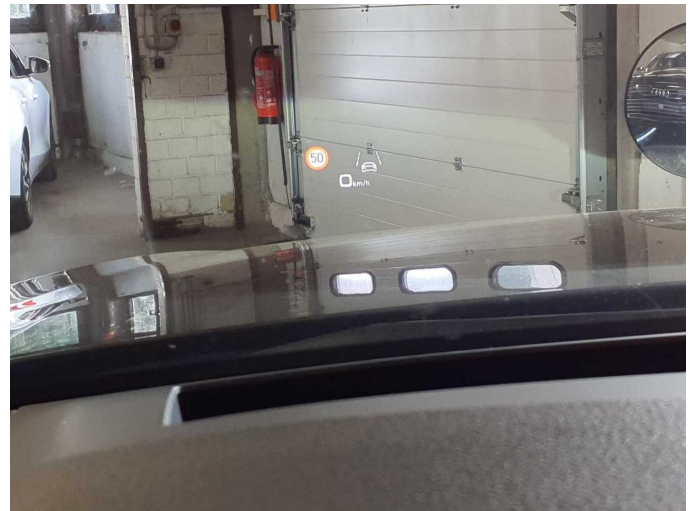


Figure 20: Misc.

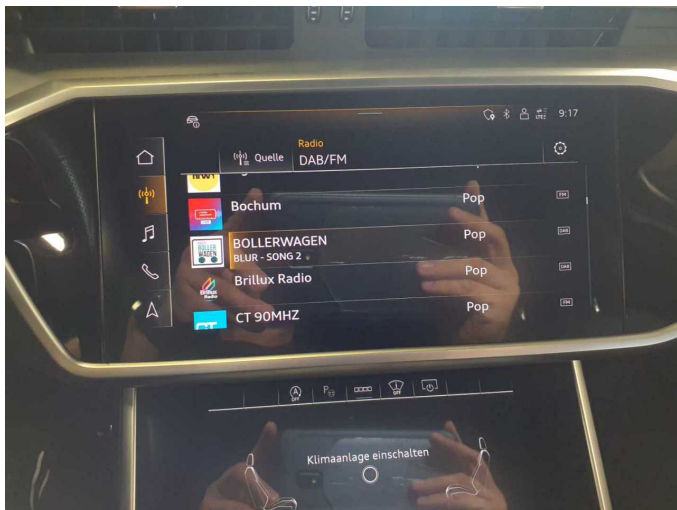


Figure 21: Misc.



Figure 22: Misc.

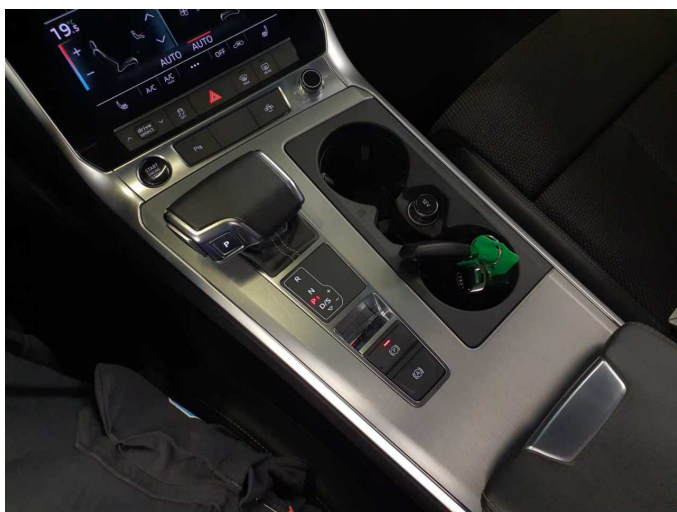


Figure 23: Misc.



Figure 24: Misc.



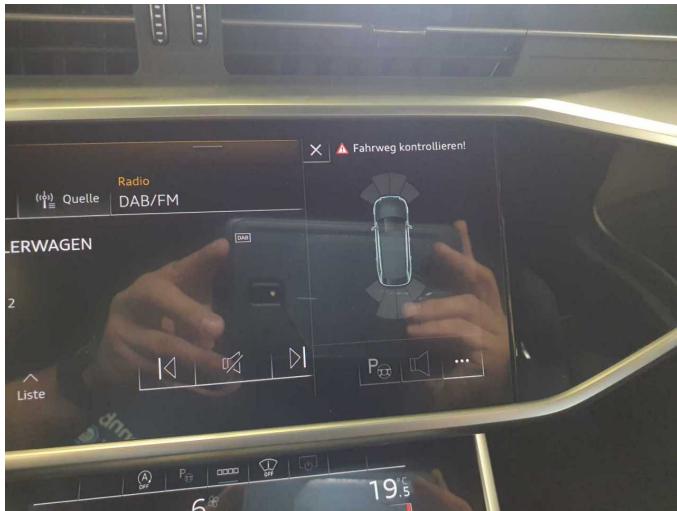


Figure 25: Misc.



Figure 26: Misc.



Figure 27: Misc.



Figure 28: Misc.



Figure 29: Misc.



Figure 30: Misc.





Figure 31: Misc.



Figure 32: Misc.

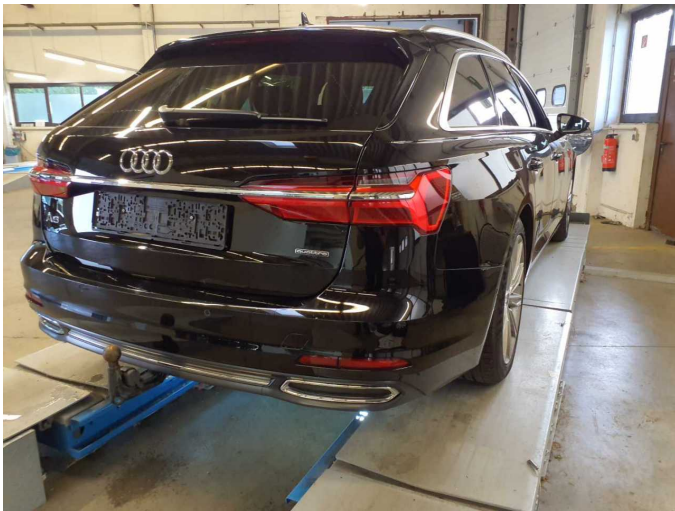


Figure 33: Misc.



Figure 34: Misc.



Figure 35: Misc.



Figure 36: Misc.





Figure 37: Misc.



Figure 38: Misc.



Figure 39: Misc.



Figure 40: Misc.



Figure 41: Misc.



Figure 42: Misc.





**Figure 43:** Misc.



**Damage 1:** Documents: Log book - Incomplete - Replace



**Damage 1:** Documents: Log book - Incomplete - Replace



**Damage 2:** Trim / covers: C-pillar - trim - interior, right side - Scratched - Loss in value



**Damage 2:** Trim / covers: C-pillar - trim - interior, right side - Scratched - Loss in value

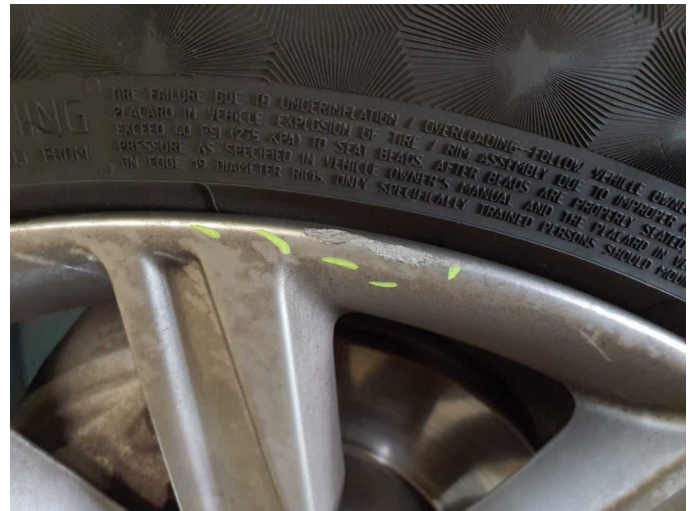


**Damage 2:** Trim / covers: C-pillar - trim - interior, right side - Scratched - Loss in value





**Damage 3:** Wheel / tyres: Alloy rim - front right side - Scratched - Loss in value



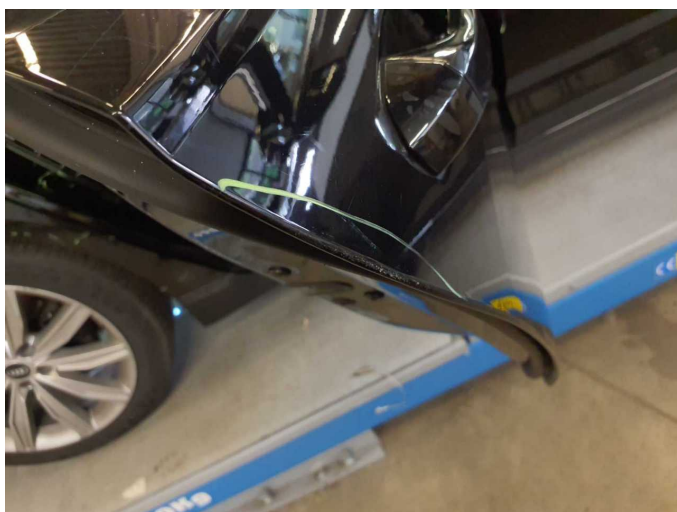
**Damage 3:** Wheel / tyres: Alloy rim - front right side - Scratched - Loss in value



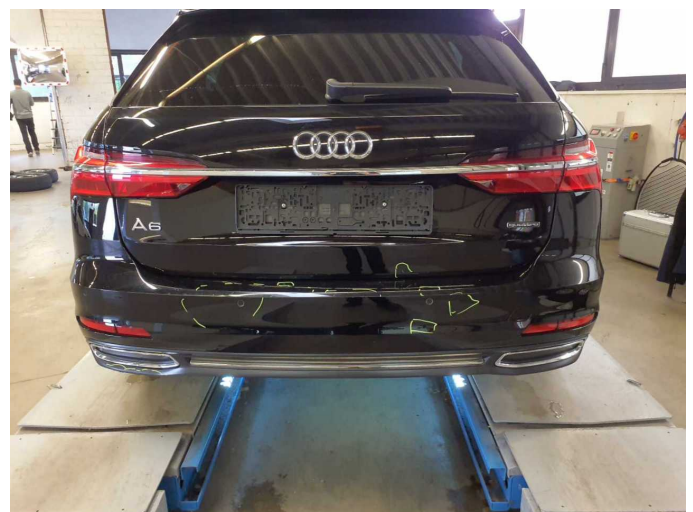
**Damage 4:** Door - rear right side: Door edge - Scratched - Smart repair



**Damage 4:** Door - rear right side: Door edge - Scratched - Smart repair



**Damage 4:** Door - rear right side: Door edge - Scratched - Smart repair



**Damage 5:** Boot lid / rear door: Boot lid - Scratched - Smart repair

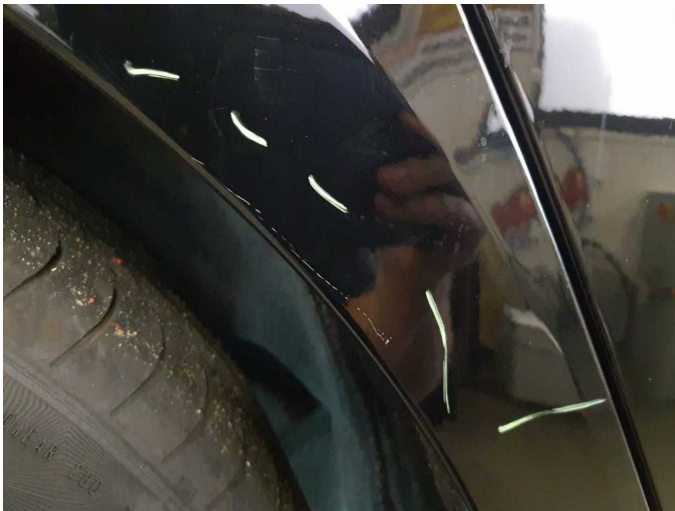




**Damage 5:** Boot lid / rear door: Boot lid - Scratched - Smart repair



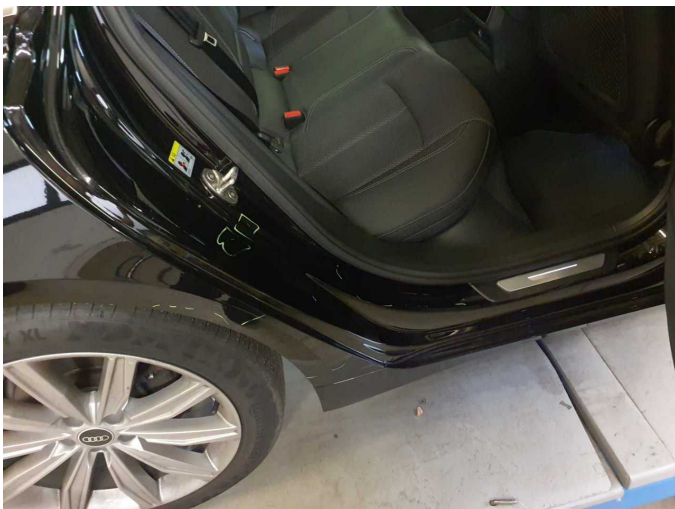
**Damage 6:** Side panel - rear right side: Side panel - Scratched - Smart repair



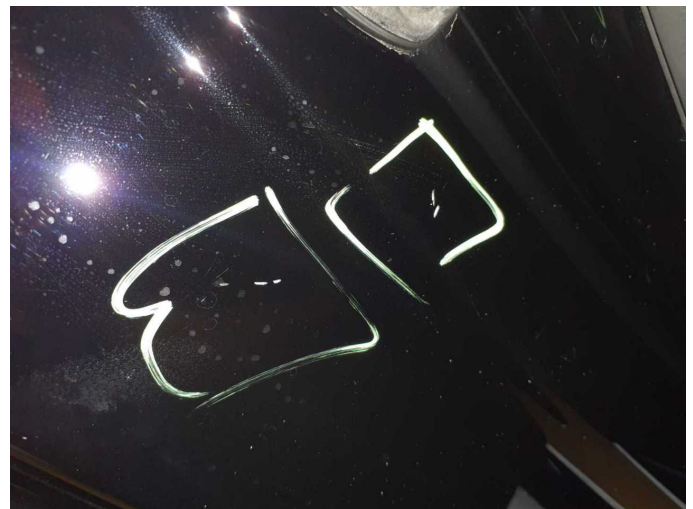
**Damage 6:** Side panel - rear right side: Side panel - Scratched - Smart repair



**Damage 6:** Side panel - rear right side: Side panel - Scratched - Smart repair



**Damage 7:** Side panel - rear right side: Sill - Dent / paintcoat damage - Smart repair



**Damage 7:** Side panel - rear right side: Sill - Dent / paintcoat damage - Smart repair

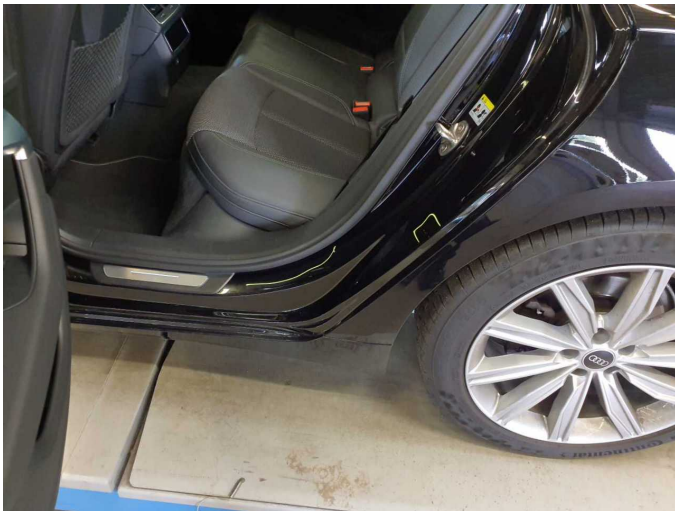




**Damage 7:** Side panel - rear right side: Sill - Dent / paintcoat damage - Smart repair



**Damage 7:** Side panel - rear right side: Sill - Dent / paintcoat damage - Smart repair



**Damage 8:** Side panel - rear left side: Sill - Scratched - Smart repair



**Damage 8:** Side panel - rear left side: Sill - Scratched - Smart repair



**Damage 8:** Side panel - rear left side: Sill - Scratched - Smart repair



**Damage 9:** Wheel / tyres: Alloy rim - rear right side - Scratched - Loss in value





**Damage 9:** Wheel / tyres: Alloy rim - rear right side - Scratched - Loss in value



**Damage 9:** Wheel / tyres: Alloy rim - rear right side - Scratched - Loss in value



**Damage 9:** Wheel / tyres: Alloy rim - rear right side - Scratched - Loss in value



**Damage 10:** Rear bumper: Spoiler - Scratched - Replace



**Damage 10:** Rear bumper: Spoiler - Scratched - Replace

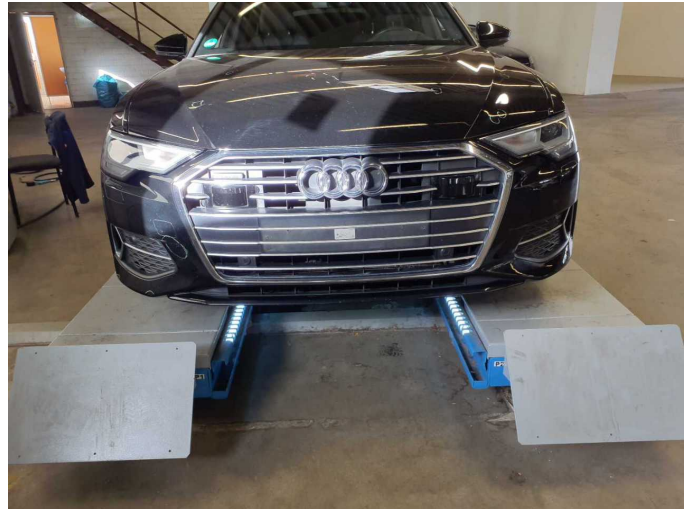


**Damage 10:** Rear bumper: Spoiler - Scratched - Replace





**Damage 10:** Rear bumper: Spoiler - Scratched - Replace



**Damage 11:** Front bumper: Front bumper - Scratched - Paint



**Damage 11:** Front bumper: Front bumper - Scratched - Paint



**Damage 11:** Front bumper: Front bumper - Scratched - Paint

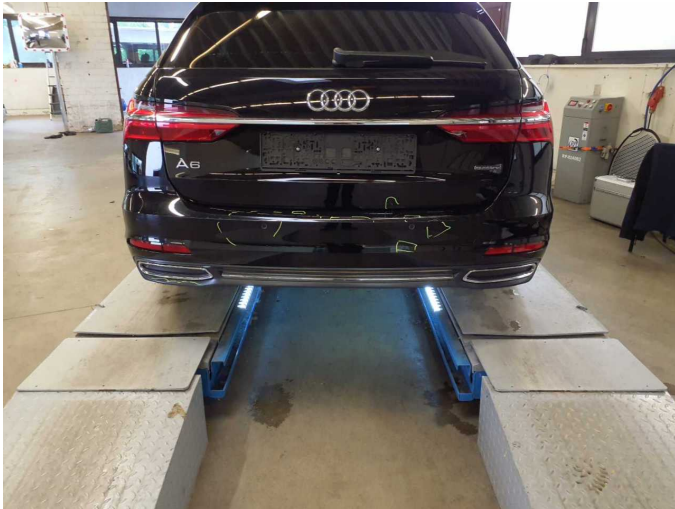


**Damage 11:** Front bumper: Front bumper - Scratched - Paint



**Damage 11:** Front bumper: Front bumper - Scratched - Paint





**Damage 12:** Rear bumper: Rear bumper - Scratched - Paint



**Damage 12:** Rear bumper: Rear bumper - Scratched - Paint



**Damage 12:** Rear bumper: Rear bumper - Scratched - Paint



**Damage 12:** Rear bumper: Rear bumper - Scratched - Paint

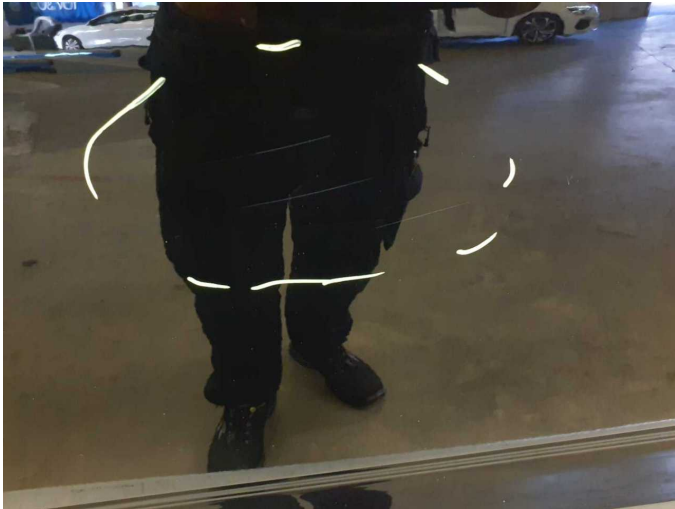


**Damage 13:** Door - front left side: Door - Scratched - Paint

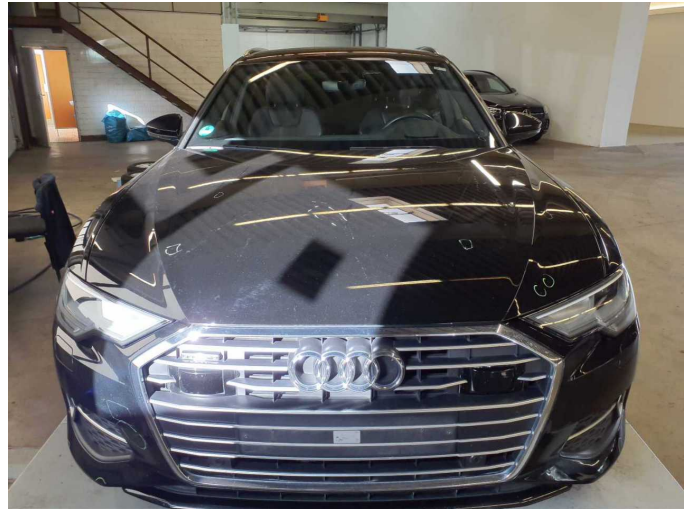


**Damage 13:** Door - front left side: Door - Scratched - Paint





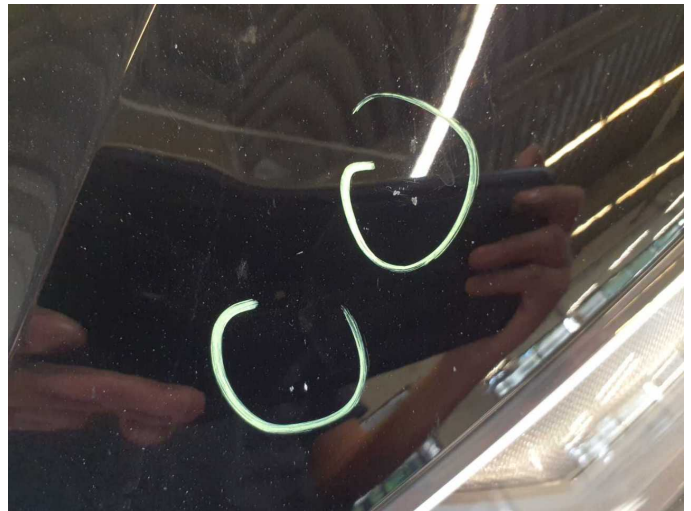
**Damage 13:** Door - front left side: Door - Scratched - Paint



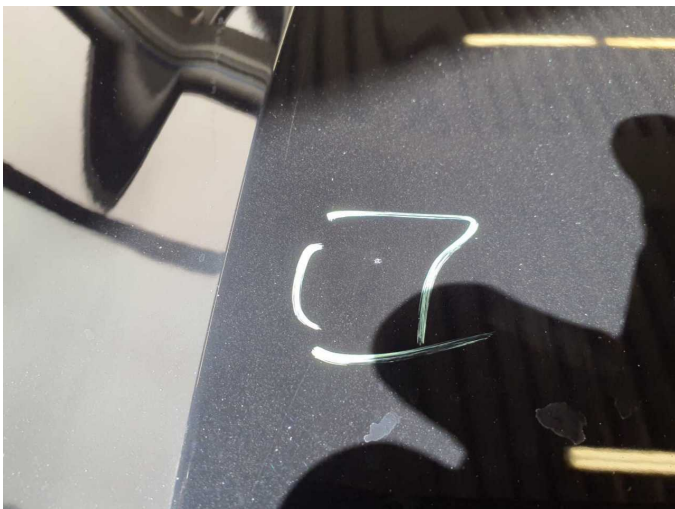
**Damage 14:** Bonnet: Bonnet - Scratched - Paint



**Damage 14:** Bonnet: Bonnet - Scratched - Paint



**Damage 14:** Bonnet: Bonnet - Scratched - Paint



**Damage 14:** Bonnet: Bonnet - Scratched - Paint



# Wartungshistorie

(gemäß Auftraggeber Informationen)

Fahrgestellnummer: WAUZZZF25NN007236

Hersteller / Modell: AUDI AUDI A6 Avant 40 TDI quattro S tronic sport

Datum	KM-Stand	Beschreibung
16.06.2025	118.209	Bremsflüssigkeit; Bremsflüssigkeit ern; Getriebeöl ern/prüfen; Kraftstofffilter ern; Motoröl b. Wartung; Ölfilter ern; Regelwartungsdienst; Reparatur Sonstiges; Wartung Sonstiges
27.05.2024	89.008	Luftfiltereinsatz ern; Motoröl b. Wartung; Ölfilter ern; Regelwartungsdienst; Reparatur Sonstiges; Systemtest/Eigendiagnose; Wartung Sonstiges
15.06.2023	58.600	AU; Bremsbelagfühler ern; Bremse Sonstiges; Bremsflüssigkeit; Bremsflüssigkeit ern; Bremsklötze hinten; Bremsklötze vorne; Bremsscheiben hinten; Bremsscheiben vorne; Getriebeöl ern/prüfen; Kraftstofffilter ern; Motoröl b. Wartung; Ölfilter ern; Regelwartungsdienst; Reparatur Sonstiges; Systemtest/Eigendiagnose; Wartung Sonstiges
23.06.2022	29.258	AU; Motoröl b. Wartung; Ölfilter ern; Regelwartungsdienst; Wartung Sonstiges