



Expertise

Protocol number: 41248311  
Order No. / Reference: 25156398  
Inspection date: 28 Aug 2025

Manufacturer: Audi	Model: A6 Avant 45 TDI quattro S tronic sport
VIN: WAUZZZF22PN006645	



Vehicle details	
Manufacturer / Type / Model / Equipment	
Audi A6 Avant 45 TDI quattro S tronic sport	
Vehicle Identification number	WAUZZZF22PN006645
Mileage (Read)	99,686 km
First registration	12 Aug 2022
Number of holders	1
Power / Engine displacement	180 kw / 2,967 ccm
Fuel type / Cylinder	Hybrid Diesel / E / 6
Gearbox / Number of gears	Automatic / 7
Type of drive	All-wheel drive
Type of vehicle	Station wagon
Colour / colour code	Ibisweiß
Doors / Seats	5 / 5
Upholstery type	Cloth / leather combination
Colour of upholstery	Black-Anthracite
Vehicle with smoke odor	no



## Vehicle details

<b>Maintenance booklet / proof</b>	digital proof / complete	<b>Next maintenance in</b>	9,400 km
<b>Last maintenance on / at</b>	05/2025 at 89,803 km		
<b>Key is / should be</b>	2 / 2	<b>FZG documents</b>	ZB#2 (B) was available (copy), ZB#1 (S) was not available
		<b>Letter No.</b>	GM655996
<b>Previous damage / Accident</b>	None detectable	<b>Repainting</b>	None detectable
<b>Inspection conditions</b>	sufficient	<b>Lifting equipment / pit</b>	yes
<b>Test drive</b>	short drive on the company premises	<b>Engine function test</b>	Performed
<b>Manufacturer key number/ type code number</b>	0588 / BZA 00796		
<b>Emission standard</b>	EURO6;WLTP;AP;PI/CI; M, N1 I	<b>Fine dust sticker</b>	
<b>Permitted total weight</b>	2,570 kg	<b>Empty weight</b>	

## Tyres

### Mounted tyres

#	Tyre size	Type of tyre	Manufacturer	Tread depth
1)	245/45 R19 102Y	Summer tires (with run-flat tires) on Light alloy	Continental	5mm / 5mm
2)	245/45 R19 102Y	Summer tires (with run-flat tires) on Light alloy	Continental	5mm / 5mm

### Replacement

Typ	Tyre size	Type of tyre	Manufacturer	Tread depth
	Tirefit	Expiration date 08/2027		

**Legend:** Tread depth information for tires on the left is in the first place, for tires on the right is in the second place on the axle in the direction of travel

## Equipment

### Standard equipment

- AdBlue tank (12 liters) (tank for AdBlue solution to reduce nitrogen oxides in the exhaust gas using the SCR system)
- Airbag: Front side airbags and head airbag system (front side airbags integrated into the seat backrests - with additional head airbag system: unfolds in front of the side window area and thus protects front and outer rear passengers in the event of a side impact)
- Anti-lock braking system (ABS)
- Audi connect Navigation & Infotainment (Online Points of Interest Online Traffic Information Hazard Information Weather Information Access to Calendar myAudi Navigation Wi-Fi Hotspot Online News On-Street Parking User Profiles)
- Audi drive select (adjustment of the vehicle characteristics in the available modes auto, comfort, dynamic, efficiency, allroad, offroad, and individual by adjusting the steering assistance, engine characteristics and gearshift characteristics, dynamic all-wheel steering, damper control, adaptive air suspension, sport differential, ultra technology, adaptive cruise control, matrix LED headlights, and setting of other optional equipment.)
- Electrically adjustable and heated exterior mirrors (with integrated LED flashing light, including heated windshield washer nozzles, aspherical mirror glass)
- Exterior mirror housings in body color
- Brake light, third
- Headlining fabric
- Roof rails in aluminum
- Decorative inserts Aluminium Fragment (for dashboard, door panels and centre console; including aluminium-look surrounds)
- tachometer
- Electronic Stabilization Control (ESC)
- Remote control key (unlocking and locking of the doors, trunk lid, and fuel filler flap. The vehicle is authorized to drive away without actively operating the key (Keyless Go). The driver must be seated in the vehicle and carry the key. The engine is started and stopped using the engine start/stop button in the center console.)
- Luggage compartment lid, electrically opening and closing (The luggage compartment lid can be opened electrically by pressing the button on the vehicle key, in the driver's door, or the soft-touch button on the luggage compartment handle. Closing the luggage compartment lid: Simply press the button on the inside of the luggage compartment lid, the button in the driver's door, or the button on the vehicle key. A6 Avant: Opening in low ceilings is made convenient thanks to a programmable opening angle.)
- Transmission: S tronic 7-speed
- Airbag for driver and front passenger (full-size airbag, with passenger airbag deactivation)
- "quattro" all-wheel drive with ultra technology (permanently available all-wheel drive with actively controlled torque distribution, ultra technology, and wheel-selective torque control. The system includes an electronically controlled all-wheel clutch, a traction clutch integrated into the rear axle differential, and an electronic differential lock (EDL) for all driven wheels. The ultra technology allows for a reduction in drag losses in the all-wheel drive train by opening both clutches.)
- Audi connect Emergency Call & Service m.connect Remote & Control (The Audi connect Emergency Call & Service services ensure a feeling of security on every journey. - Emergency call - Online breakdown call - Audi damage service - Audi service appointment online Audi connect Remote & Control: - Vehicle status - Remote locking/unlocking - Parking position - Remote control auxiliary heating - Push notification for the anti-theft alarm system)
- Audi pre sense front (Within system limits, it can warn of impending collisions depending on the situation and speed and initiate appropriate braking. The system is active from approximately 5 km/h. Pedestrians and cyclists can be detected in the speed range up to approximately 85 km/h, and vehicles in the speed range up to 250 km/h. If an impending frontal collision is detected, the system warns the driver visually, acoustically, and haptically using a multi-stage concept.)
- Diesel particulate filter (DPF) with nitrogen oxide catalyst and AdBlue tank
- Door sills with aluminum inserts at the front and rear (unlit)
- Driver information system with color display (7-inch color display Display contents: Speed (digital speedometer) Time, mileage, outside temperature, fuel warning with remaining range Gear shift recommendation Current radio station or music track, radio and media lists Telephone menu Information from navigation and tips from driver assistance systems (if available) On-board computer The integrated efficiency program supports the driver with consumption data overviews and saving tips for more economical driving Break recommendation)
- Cruise control including speed limiter (The cruise control maintains the desired speed between 20 and 250 km/h by adjusting engine power or actively applying the brakes, provided engine and brake performance permit. It is operated via a separate steering column stalk, including a display of the set speed in the driver information system. The speed limiter helps to ensure that a preset maximum speed is not exceeded.)
- Dimmable interior mirror



- Interior lighting (roof module front and rear, including reading lights (capacitively switched), illuminated vanity mirrors for driver and front passenger, entry lights on the underside of the front doors, interior door controls front/rear, storage compartment front, glove compartment, footwell lighting front/rear, trunk lighting right/left)
- 2-zone automatic climate control (separate temperature distribution for driver and passenger side, rear compartment air conditioning via air vents in the rear center console, defroster nozzles for windshield and side windows, combined pollutant and particulate filter)
- Steering wheel: 3-spoke leather steering wheel with multifunction and shift paddles (shift paddles allow manual gear changes).
- Front center armrest (adjustable in inclination, longitudinally movable)
- Gloss package (window channel trim in anodized aluminum - B-pillar trim outside in high-gloss black - rear light bar in chrome)
- Non-smoking package (no ashtray in the front center console, one 12-volt socket each at the front and rear)
- Progressive steering (increases driving dynamics and comfort through more direct steering response (e.g., on winding country roads or when turning) and reduced steering effort (e.g., when parking and maneuvering); driving characteristics through a steering ratio dependent on the steering angle and speed-dependent steering assistance; various modes, adjustable via Audi drive select)
- Radio accessories: 8 speakers (passive) front and rear
- Rail system with fixing set (loading floor in the luggage compartment with one rail each on the left and right - with four variable lashing eyes, which can be variably positioned in the rail system - with tensioning strap on the right for securing objects and a net on the left - with two hooks on the right and left)
- Seat covers in fabric
- Seats: 4-way lumbar support (electrically adjustable, horizontally and vertically)
- Seats: Front sports seats (with manual adjustment of seat height, seat fore/aft position, seat angle, backrest angle, headrest height and spacing, and seat belt height with pronounced seat side bolsters for better lateral support in curves, extendable thigh support, and electric 4-way lumbar support)
- Sun visor on driver and passenger side
- Lane Departure Warning (helps prevent unintentional lane departure within system limits. If the system is activated and ready, and the driver has not activated the turn signal, the Lane Departure Warning helps prevent crossing detected lane markings by correcting the steering. An additional steering wheel vibration can be adjusted upon driver request. Functional range from approximately 60 to a maximum of 250 km/h.)
- Electronic immobilizer
- Central locking

- ISOFIX and Top Tether child seat attachment for the outer rear seats (holding device for the practical attachment of ISOFIX child seats with an additional upper attachment point (Top Tether) on the outer rear seats)
- Headrests (4) (manually height adjustable at the front)
- LED headlights (The headlights have the following functions: - Daytime running lights - Low beam - High beam - Position light - Indicator light with bulb technology - All-weather light (to reduce glare in poor visibility conditions) LED rear lights - Indicator, brake, tail, reversing and rear license plate lights with LED technology)
- Steering column, manually height and axially adjustable
- MMI navigation with MMI touch response (10.1-inch color display (1,540 × 720), additional display of the navigation map or arrow display in the driver information system, map update, 3D map display, efficiency assistant, online traffic information, MMI search, MMI touch response for fast, intuitive operation, easy operation of the infotainment system via natural language interaction, detailed route information, input of up to 10 intermediate destinations, selected portfolio Audi connect navigation & infotainment)
- Wheel: Tire pressure monitoring indicator (visual and acoustic warning in case of pressure loss on one or more wheels - display in the driver information system)
- Wheel: Tire repair kit
- Radio: MMI Radio Plus with MMI touch response (10.1-inch color display - Driver information system with 7" TFT color display - Audi music interface; 2 USB-C ports with data and charging function - Bluetooth interface (hands-free calling and audio streaming) - Separate MMI touch control panel with 8.6" color display including MMI touch response with haptic feedback; for controlling the climate control function and input field for handwriting recognition - AM/FM phase diversity - Speed-dependent volume adjustment - DAB+)
- Seats: Rear seat backrest, split-folding Avant (distinctive outer rear seats, visually matched to the front seats, and an additional central seating option - 3 rear L-shaped headrests, manually height-adjustable - three 3-point belts - rear seat backrest can be split 40:20:40 or fully folded - rear center armrest, one-piece and foldable, with storage compartment - with remote backrest release in the trunk, removable partition net, can be attached to the body or to the folded rear seat backrest)
- Start-Stop System (helps reduce fuel consumption and CO2 emissions by shutting off the engine when stationary, e.g., at traffic lights. For a restart, the starting process is initiated as soon as the foot brake is released. Can be deactivated at any time using a button.)
- Glazing: Windscreen in thermal insulation glazing
- Glazing: Rear window, rear door and side windows in clear glass
- Heat-insulating glazing on the sides and rear (green tinted rear window heated, with timer)

## Extra equipment



- Swiveling trailer coupling with electric release (with swiveling ball head, trailer stabilisation via the electronic stabilisation control (ESC), release via button in the luggage compartment, the integrated, swivelling system socket enables continuous operation of electrical devices in the trailer or caravan while driving)
- Electrically adjustable, heated, and folding exterior mirrors with automatic dimming on both sides (including automatic curb-check function for the passenger exterior mirror with integrated LED indicators, including heated windshield washer nozzles, and aspherical mirror glass. The automatic curb-check function lowers the passenger exterior mirror when reverse gear is engaged, giving the driver a better view of the curb.)
- High beam assistant (within the system's limits, automatically detects the headlights of oncoming traffic, the taillights of other road users, and towns. Depending on the traffic situation, the high beam is automatically switched on or off.)
- Paintwork: Special paintwork Uni
- Ambient lighting package (in addition to the standard interior lighting: - Ambient fabric lighting of the front/rear doors - Approach lighting from the outside door handles at the front/rear - Ambient lighting of the instrument panel)
- Business Package (Tour Assistance Package Adaptive Driving Assistant supports the driver with acceleration, braking, maintaining speed and distance, and lane guidance. Adaptive Cruise Control, Cruise Control, Efficiency Assistant supports the driver with predictive parking. Parking aid plus 4-zone automatic climate control. Heated front seats. Audi phone box. Automatically dimming interior mirror. Automatically dimming exterior mirror. Adaptive windshield wipers with integrated washer nozzles. High beam assistant.)
- Wheel: Light alloy wheels 5-arm dynamic (S-Design) (8.5 J x 19 with tires 245/45 R 19)
- Radio accessories: Bang & Olufsen Premium Sound System with 3D sound (sound reproduction through 16 loudspeakers including 3D sound loudspeaker, center speaker and subwoofer, 15-channel amplifier with a total output of 705 watts; spatial sound reproduction through the 3D sound feature for the front seats. This is generated by additional loudspeakers in the A-pillar, the midrange speakers and the Fraunhofer Symphoria technology. The 3D sound can be reproduced with all sources.)
- Seat covers in Sequence fabric/leather combination with S-embossing (for front sports seats: -Seat center panels in Sequence fabric in black -Seat side bolsters and headrest center panels in front in black leather with contrasting stitching -with S-embossing in the front seat backrests)
- Audi virtual cockpit plus (3 individual display options: Dynamic, Sport, and Classic - Operation via the multifunction steering wheel - Configuration of onboard computer values in the tachometer - Display of the navigation map as a 3D terrain model on the high-resolution 12.3-inch Full HD color display - Permanent display of navigation information in the speedometer area when route guidance is active - Break recommendation)
- Exterior mirror housing in black
- Decorative insert in matt brushed dark aluminum (for dashboard, door panels and center console; including aluminum-look surrounds)
- Parking aid plus with surround display (acoustic and visual parking aid at the front, sides, and rear to assist with parking and maneuvering using 12 ultrasonic sensors. A selective visual display shows the distance to detected objects in the upper display, depending on the current steering angle and direction of travel. Upon request, the system is activated automatically as soon as the vehicle approaches a detected obstacle at a speed of less than 10 km/h.)
- Tour Assistance Package (Adaptive Cruise Control - Adaptive Cruise Control, Speed Limit - Efficiency Control supports the driver in anticipatory and thus fuel-efficient driving - Evasion Control helps the driver steer the vehicle around an obstacle in a critical situation - Turn Control - Emergency Control - High Beam Control - Camera-based Traffic Sign Recognition)
- Black optics package plus (black optics package with Audi rings front/rear and model name in black)
- S line sports package (5-spoke alloy wheels (S-Design), 8.5J x 19 with 245/45 R19 tires, sports suspension, illuminated front and rear entry lights, S-logo on the front fenders, 3-spoke leather-wrapped sports steering wheel with multifunction and gearshift, steering wheel and selector lever knob with S emblem in premium leather, S line seat covers in sequence fabric/leather combination with S embossing on the front seat backrests, brushed dark matt aluminum trim, interior, dashboard and headliner in black, stainless steel footrest and pedals, floor mats)
- Radio accessories: DVD drive (DVD drive installed in the glove compartment, supports MP3, WMA and AAC)
- Radio accessories: USB ports with charging function in the rear (2 USB-C ports with charging function in the rear in addition to two additional ports in the first row of seats. Easy connection using a USB cable, power 15 watts)
- Seat heating front and rear (heats seat and backrest center panels; with leather upholstery, sports seats, and sports seats plus also seat side bolsters - individually adjustable in multiple stages for driver and front passenger side using the climate control panel - also for the outer rear seats, separately adjustable in multiple stages)
- Glazing: Sun protection glazing tinted (rear window, rear door and side windows tinted)



- Phone: Audi Phone Box (Up to two smartphones can be paired with the vehicle simultaneously via Bluetooth, allowing you to either play music through the vehicle or make phone calls using one of the two smartphones. This universal smartphone holder connects to the vehicle antenna, improving reception and call quality. The smartphone can also be charged via wireless charging with the Qi standard or via a USB port.)

### Brief expert findings

Documents submitted	At the time of the inspection, the registration certificate Part 2 (letter) was available, but the registration certificate Part 1 (certificate) was not. (Copy)
VIN comparison	The vehicle identification number (VIN) was read from the vehicle and its conformity with the submitted documents was verified during the inspection by the undersigned.
Inspection	The inspection conditions were sufficient for the assessment of the vehicle. Lifting equipment and a pit were available for examining the vehicle.
Test drive	A short maneuvering and shunting trip was carried out on the company premises.
Engine function test	An engine test run was performed.

### Value reducing factors

No.	Component group	Description
1	Rear bumper	Rear bumper - Scratch(es) - Smart repair
2	Wheel / tyres	Alloy rim - rear right side - Scratched - Loss in value
3	Wheel / tyres	Alloy rim - front right side - Scratched - Loss in value
4	Front bumper	Front bumper - Scratched - Paint
5	Vehicle glazing	Windscreen - Stone chips - Replace

### Wear and tear

No.	Component group	Description
1	Rear bumper	Spoiler - Scratch(es) - No deduction
2	Engine	Engine cover - Stone chips - No deduction

The vehicle shows signs of wear commensurate with its age and use.

### Order/Scope of order

The order was placed to prepare a sales report for the vehicle described. This includes the following:

- Description of core relevant information about the vehicle
- Documentation of equipment features  
(*Delivery by third-party service providers*)
- Documentation of damage, defects, missing parts
- Documentation of previous damage, unrepaired previous damage, repainting
- a brief visual or functional inspection of the equipment details if possible.  
(*Functional tests of driver assistance systems are not included in the scope of services!*)
- a photo documentation of the vehicle





## Basis for the order

This product is based on the Alphabet Fuhrpark GmbH guidelines for vehicle returns and valuations. The expert makes the explicit findings in each individual case objectively within the framework of the specified standards based on his or her own expertise.

The vehicle inspection takes place in a disassembled state.

Damage or defects that can only be detected during disassembly/diagnosis work or through advanced knowledge remain within the scope of the prognosis risk. An extended risk exists for concealed defects caused by fraudulent deception and not identifiable by the expert.

Damage or defects resulting from normal use or wear and tear of the vehicle will be accepted according to the applicable standard.

There was no explicit identification or monetary consideration of the expected features within the product.

Features which in their nature and severity slightly exceed normal use but do not constitute unacceptable damage will be documented and identified under signs of use if necessary.

Damage or defects which, according to the underlying standard, can no longer be attributed to normal use or wear and tear are listed in the product under "Depreciating Factors".

Depending on the product specification, a monetary ID can be provided. If this takes place, the costs can be 100% d or pro rata depending on the vehicle's age and mileage.

## Previous damages

Apparently, no repaired previous damage could be found on the vehicle.



Figure 1: Diagonal front (left)



Figure 2: Diagonal front (right)



Figure 3: Diagonal rear (left)



Figure 4: Diagonal rear (right)



Figure 5: Interior - front



Figure 6: Interior - rear





Figure 7: Instrument cluster



Figure 8: Instrument panel



Figure 9: interior 360° view



Figure 10: Cargo area

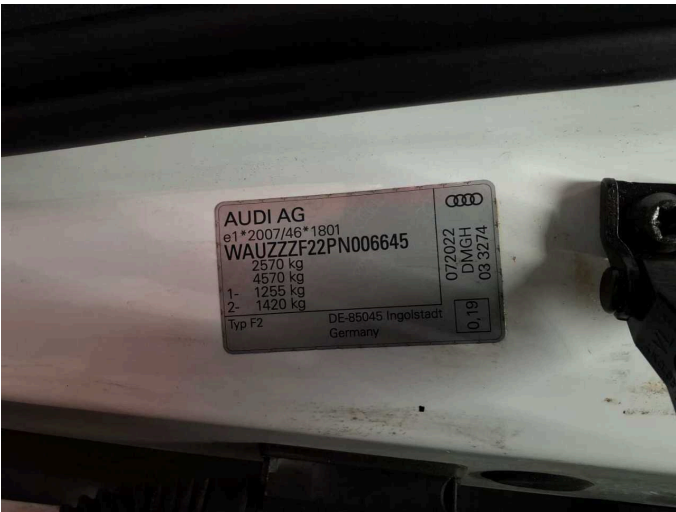


Figure 11: VIN



Figure 12: Mounted tyres





Figure 13: Documents



Figure 14: Documents

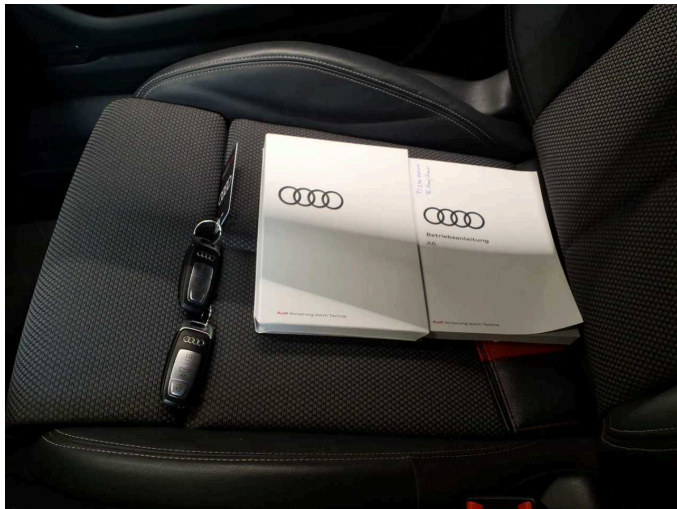


Figure 15: Documents



Figure 16: Navigation



Figure 17: Misc.



Figure 18: Misc.





Figure 19: Misc.



Figure 20: Misc.



Figure 21: Misc.



Figure 22: Misc.



Figure 23: Misc.



Figure 24: Misc.



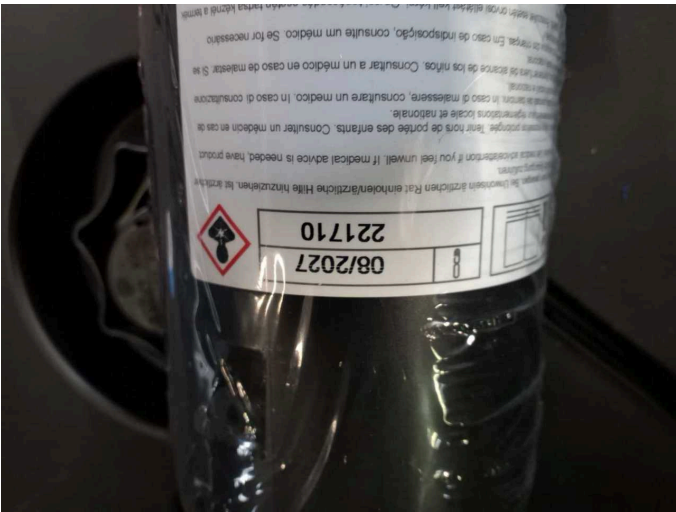


Figure 25: Misc.



Figure 26: Misc.

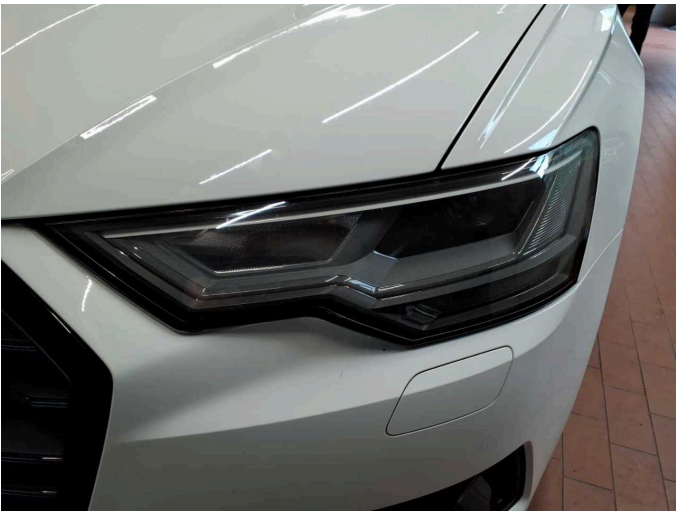


Figure 27: Misc.



Figure 28: Misc.

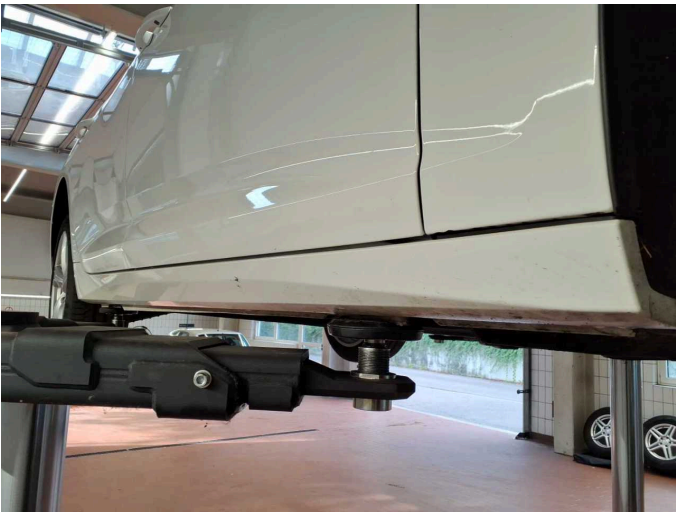


Figure 29: Misc.

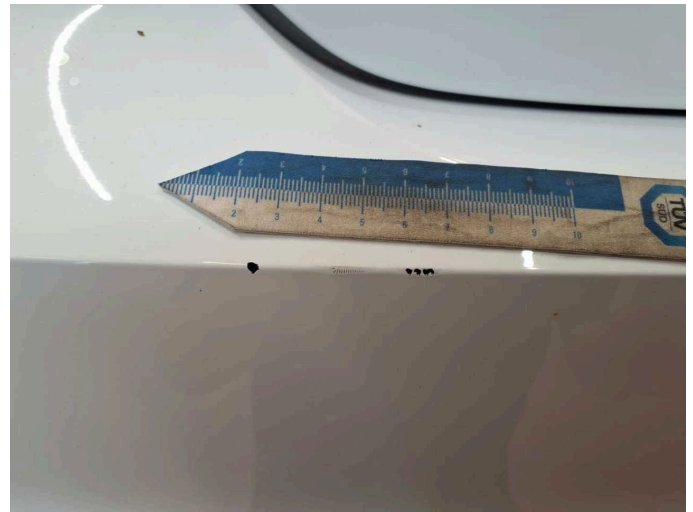


Figure 30: Misc.





**Damage 1:** Rear bumper: Rear bumper - Scratch(es) - Smart repair



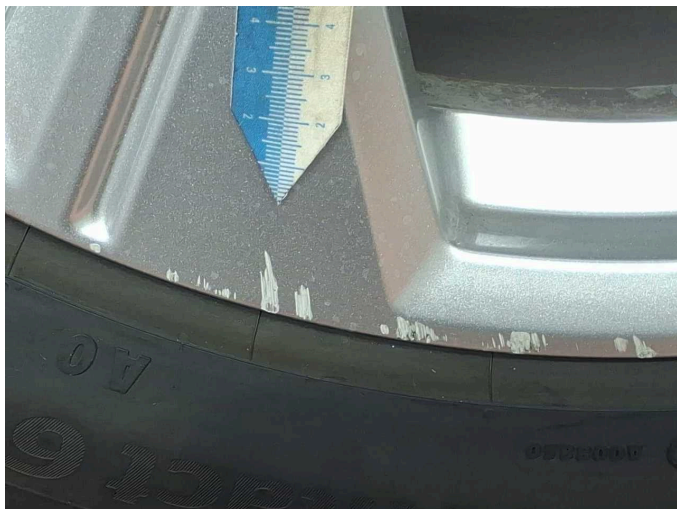
**Damage 1:** Rear bumper: Rear bumper - Scratch(es) - Smart repair



**Damage 2:** Wheel / tyres: Alloy rim - rear right side - Scratched - Loss in value



**Damage 2:** Wheel / tyres: Alloy rim - rear right side - Scratched - Loss in value



**Damage 2:** Wheel / tyres: Alloy rim - rear right side - Scratched - Loss in value



**Damage 3:** Wheel / tyres: Alloy rim - front right side - Scratched - Loss in value





**Damage 3:** Wheel / tyres: Alloy rim - front right side - Scratched - Loss in value



**Damage 4:** Front bumper: Front bumper - Scratched - Paint



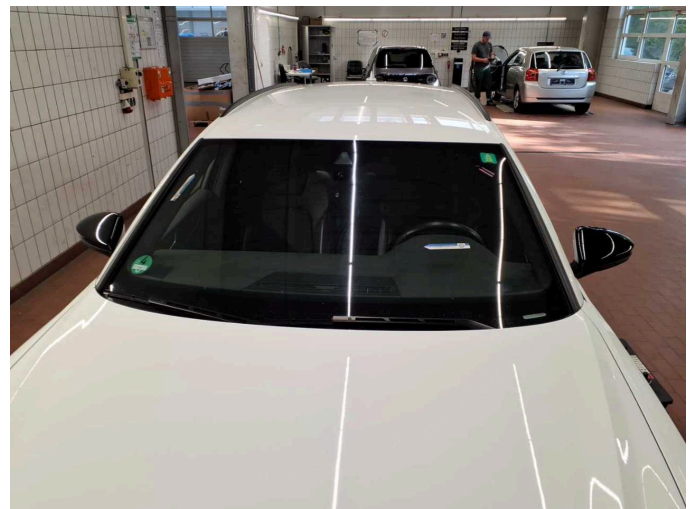
**Damage 4:** Front bumper: Front bumper - Scratched - Paint



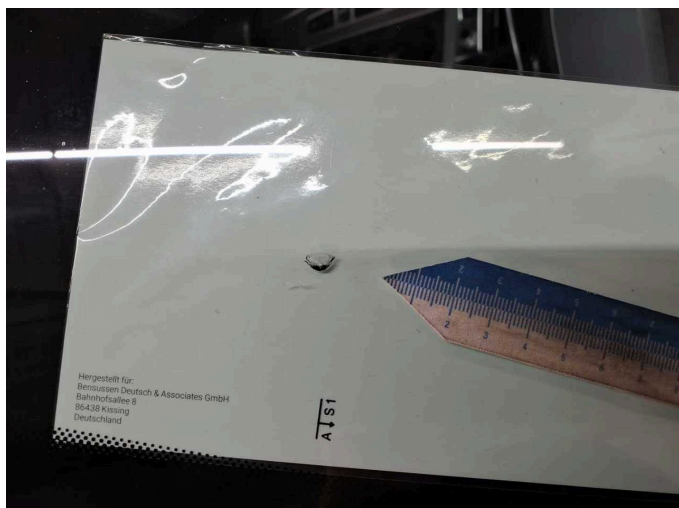
**Damage 4:** Front bumper: Front bumper - Scratched - Paint



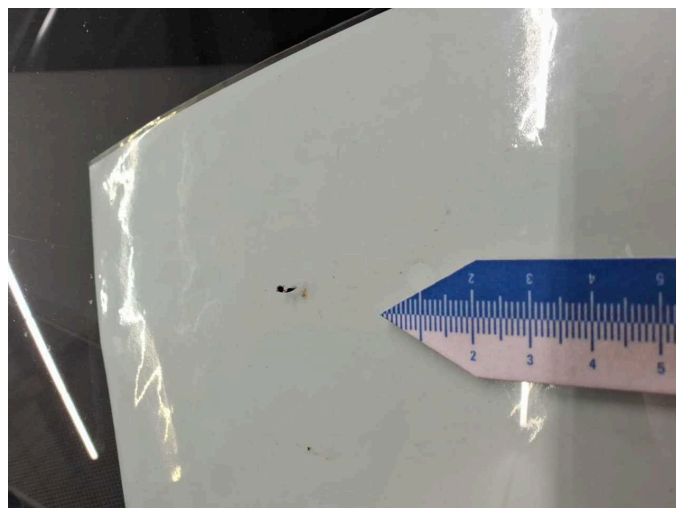
**Damage 4:** Front bumper: Front bumper - Scratched - Paint



**Damage 5:** Vehicle glazing: Windscreen - Stone chips - Replace



**Damage 5:** Vehicle glazing: Windscreen - Stone chips - Replace



**Damage 5:** Vehicle glazing: Windscreen - Stone chips - Replace



# Wartungshistorie

(gemäß Auftraggeber Informationen)

Fahrgestellnummer: WAUZZZF22PN006645

Hersteller / Modell: AUDI AUDI A6 Avant 45 TDI quattro S tronic sport

Datum	KM-Stand	Beschreibung
06.05.2025	89.803	Regelwartungsdienst
12.02.2025	78.996	Bremsbelagfühler ern; Bremse Sonstiges; Bremsklötze hinten; Bremsklötze vorne; Bremsscheiben hinten; Bremsscheiben vorne; Motoröl b. Wartung; Ölfilter ern; Ölwechsel; Wartung Sonstiges
19.07.2024	61.402	Bremsflüssigkeit; Bremsflüssigkeit ern; Getriebeöl ern/prüfen; Kraftstofffilter ern; Luftfiltereinsatz ern; Regelwartungsdienst; Reparatur Sonstiges; Wartung Sonstiges
12.03.2024	49.836	Motoröl b. Wartung; Ölfilter ern; Ölwechsel; Wartung Sonstiges
02.08.2023	30.654	Regelwartungsdienst
25.05.2023	24.106	Motoröl b. Wartung; Ölwechsel