



Expertise

Protocol number: 41153939  
Order No. / Reference: 25071336  
Inspection date: 18 Aug 2025

Manufacturer: Audi	Model: A6 Avant 40 TDI S tronic
VIN: WAUZZZF22NN064042	



Vehicle details	
Manufacturer / Type / Model / Equipment	
Audi A6 Avant 40 TDI S tronic	
Vehicle Identification number	WAUZZZF22NN064042
Mileage (Read)	157,271 km
First registration	28 Jun 2022
Number of holders	1
Power / Engine displacement	150 kw / 1,968 ccm
Fuel type / Cylinder	Hybrid Diesel / E / 4
Gearbox / Number of gears	Automatic / 7
Type of drive	Front drive
Type of vehicle	Station wagon
Colour / colour code	Chronosgrau-metallic (X7G)
Doors / Seats	5 / 5
Upholstery type	Cloth
Colour of upholstery	Black-Anthracite
Vehicle with smoke odor	no



## Vehicle details

<b>Maintenance booklet / proof</b>	digital proof / complete	<b>Next maintenance in</b>	22,800 km
<b>Last maintenance on / at</b>	05/2025 at 154,365 km		
<b>Key is / should be</b>	2 / 2	<b>FZG documents</b>	ZB#2 (B) was available (copy), ZB#1 (S) was not available
		<b>Letter No.</b>	GJ248717
<b>Previous damage / Accident</b>	Detectable	<b>Repainting</b>	None detectable
<b>Inspection conditions</b>	sufficient	<b>Lifting equipment / pit</b>	yes
<b>Test drive</b>	short drive on the company premises	<b>Engine function test</b>	Performed
<b>Manufacturer key number/ type code number</b>	0588 / BSZ 02025		
<b>Emission standard</b>	EURO6;WLTP;AP;PI/CI; M, N1 I	<b>Fine dust sticker</b>	
<b>Permitted total weight</b>	2,330 kg	<b>Empty weight</b>	

## Tyres

### Mounted tyres

#	Tyre size	Type of tyre	Manufacturer	Tread depth
1)	225/60 R17 99Y	Summer tyres on Light alloy	Pirelli	6mm / 6mm
2)	225/60 R17 99Y	Summer tyres on Light alloy	Pirelli	6mm / 6mm

### Additional tyres

#	Tyre size	Type of tyre	Manufacturer	Tread depth
1)	225/60 R17 99V	Summer tyres (Without wheel rim)	Continental	5mm / 5mm

### Replacement

Typ	Tyre size	Type of tyre	Manufacturer	Tread depth
	Tirefit	Expiration date 07/2027		

**Legend:** Tread depth information for tires on the left is in the first place, for tires on the right is in the second place on the axle in the direction of travel

## Equipment

### Standard equipment

- 2-zone automatic climate control (separate temperature distribution for driver and passenger side - rear air conditioning via air vents in the rear center console - defroster nozzles for windshield and side windows - features a combined dust and odor-removing cabin filter)
- AdBlue tank (12 liters) (tank for AdBlue solution to reduce nitrogen oxides in the exhaust gas using the SCR system)
- Airbag: Front side airbags and head airbag system (front side airbags integrated into the seat backrests - with additional head airbag system: unfolds in front of the side window area and thus protects front and outer rear passengers in the event of a side impact)
- Audi connect Emergency Call & Service m.connect Remote & Control (The Audi connect Emergency Call & Service services ensure a feeling of security on every journey. - Emergency call - Online breakdown call - Audi damage service - Audi service appointment online Audi connect Remote & Control: - Vehicle status - Remote locking/unlocking - Parking position - Remote control auxiliary heating - Push notification for the anti-theft alarm system)
- Audi pre sense front (Within system limits, it can warn of impending collisions depending on the situation and speed and initiate appropriate braking. The system is active from approximately 5 km/h. Pedestrians and cyclists can be detected in the speed range up to approximately 85 km/h, and vehicles in the speed range up to 250 km/h. If an impending frontal collision is detected, the system warns the driver visually, acoustically, and haptically using a multi-stage concept.)
- Brake light, third
- Camera-based traffic sign recognition (supported by displaying traffic signs detected within the system limits, such as speed limits, no-overtaking zones, and temporary speed limits. If a traffic sign is outside the camera's field of view, it is provided from the stored navigation data of the MMI Navigation plus. The traffic sign recognition is displayed automatically in the Audi virtual cockpit and can be configured via the multifunction steering wheel.)
- Control buttons matt black
- Diesel particulate filter (DPF) with nitrogen oxide catalyst and AdBlue tank
- Door sills with aluminum inserts at the front and rear (unlit)
- Electrically adjustable and heated exterior mirrors (with integrated LED flashing light, including heated windshield washer nozzles, aspherical mirror glass)
- Electronic Stabilization Control (ESC)
- Airbag for driver and front passenger (full-size airbag, with passenger airbag deactivation)
- Anti-lock braking system (ABS)
- Audi connect Navigation & Infotainment (Navigation with Google satellite maps, online search for navigation destinations, online voice input, online traffic information/traffic information plus, online points of interest, on-street parking, hazard information, online traffic sign information, myAudi Navigation, highly detailed 3D city display, Amazon Alexa integration, online media streaming (e.g., Amazon Music integration), online radio, hybrid radio, weather information, online news, Wi-Fi hotspot, user profiles)
- Audi drive select (adjustment of the vehicle characteristics in the available modes auto, comfort, dynamic, efficiency, allroad, offroad, and individual by adjusting the steering assistance, engine characteristics and gearshift characteristics, dynamic all-wheel steering, damper control, adaptive air suspension, sport differential, ultra technology, adaptive cruise control, matrix LED headlights, and setting of other optional equipment.)
- Audi virtual cockpit plus (3 individual display options: Dynamic, Sport, and Classic - Operation via the multifunction steering wheel - Configuration of onboard computer values in the tachometer - Display of the navigation map as a 3D terrain model on the high-resolution 12.3-inch Full HD color display - Permanent display of navigation information in the speedometer area when route guidance is active - Break recommendation)
- Central locking
- Comfort center armrest in the front (length adjustable and tilt adjustable)
- Cruise control with speed limiter (From approximately 20 km/h, the system can maintain the desired speed. Control is achieved by adjusting engine power or by actively applying the brakes, provided engine and brake performance permit. It is operated via a separate steering column stalk. The set speed is displayed in the Audi virtual cockpit plus. The speed limiter is available from approximately 30 km/h and helps to avoid exceeding a preset maximum speed.)
- Decorative inlays fine lacquer graphite grey
- Dimmable interior mirror
- Electronic immobilizer
- Exterior mirror housings in body color
- Glazing: Rear window, rear door and side windows in clear glass
- Glazing: Windscreen in thermal insulation glazing
- Headlining fabric
- Headrests (4) (manually height adjustable at the front)
- Heat-insulating glazing on the sides and rear (green tinted rear window heated, with timer)

- First aid kit with warning triangle and safety vests (The first aid kit is located in the left side compartment of the luggage compartment. The factory-supplied warning triangle is located in the luggage compartment lid. The factory-supplied safety vests are located in the driver's door storage compartment.)
- Interior lighting (roof module front and rear, including reading lights (capacitively switched), illuminated vanity mirrors for driver and front passenger, entry lights on the underside of the front doors, interior door controls front/rear, storage compartment front, glove compartment, footwell lighting front/rear, trunk lighting right/left)
- Lane Departure Warning (helps prevent unintentional lane departure within system limits. If the system is activated and ready, and the driver has not activated the turn signal, the Lane Departure Warning helps prevent crossing detected lane markings by correcting the steering. An additional steering wheel vibration can be adjusted upon driver request. Functional range from approximately 60 to a maximum of 250 km/h.)
- LED headlights (The LED headlights include the following functions: - Daytime running lights - Low beam - High beam - Position light - Indicator light in bulb technology - All-weather light (to reduce glare in poor visibility conditions) LED rear lights)
- Luggage compartment lid, electrically opening and closing (The luggage compartment lid can be opened electrically by pressing the button on the vehicle key, in the driver's door, or the soft-touch button on the luggage compartment handle. Closing the luggage compartment lid: Simply press the button on the inside of the luggage compartment lid, the button in the driver's door, or the button on the vehicle key. A6 Avant: Opening in low ceilings is made convenient thanks to a programmable opening angle.)
- Non-smoking version (no ashtray in the front center console, one 12-volt socket each at the front and rear)
- Progressive steering (increases driving dynamics and comfort through more direct steering response (e.g., on winding country roads or when turning) and reduced steering effort (e.g., when parking and maneuvering); driving characteristics through a steering ratio dependent on the steering angle and speed-dependent steering assistance; various modes, adjustable via Audi drive select)
- Radio: MMI Radio Plus with MMI touch response (10.1-inch color display - Audi music interface; 2 USB-C ports with data and charging function - Bluetooth interface (hands-free calling and audio streaming) - Separate MMI touch control panel with 8.6-inch color display including MMI touch response with haptic feedback; for controlling the climate control function and input field for handwriting recognition - AM/FM phase diversity - DAB+ - Speed-dependent volume adjustment)
- Remote control key (unlocks and locks doors, luggage compartment lid, and tailgate - engine is started and stopped using the engine start/stop button - includes convenient window opening/closing)
- Roof rails in matt black
- ISOFIX and Top Tether child seat attachments for the outer rear seats (standard bracket for the practical attachment of i-Size and ISOFIX child seats – with additional attachment point (Top Tether) on the outer rear seats – the recommended child seats from Audi Genuine Accessories are available from your Audi partner)
- Manual steering wheel adjustment (adjustable in height and distance)
- MMI navigation with MMI touch response (10.1-inch color display (1,540 × 720) - Navigation map or arrow display in the Audi virtual cockpit plus - Map update - 3D map display - Efficiency assistant - Online traffic information - MMI search - MMI touch response for fast, intuitive operation - Easy infotainment operation via natural language interaction - Detailed route information - Input of up to 10 intermediate destinations - Selected Audi connect navigation & infotainment portfolio)
- Parking aid plus with surround display (acoustic and visual parking aid at the front, sides, and rear to assist with parking and maneuvering using 12 ultrasonic sensors. A selective visual display shows the distance to detected objects in the upper display, depending on the current steering angle and direction of travel. Upon request, the system is activated automatically as soon as the vehicle approaches a detected obstacle at a speed of less than 10 km/h.)
- Radio accessories: 8 speakers (passive) front and rear
- Rail system with fixing set (loading floor in the luggage compartment with one rail each on the left and right - with four variable lashing eyes, which can be variably positioned in the rail system - with tensioning strap on the right for securing objects and a net on the left - with two hooks on the right and left)
- Seat covers in fabric effect (seat center panels in black fabric effect - seat side bolsters, headrests and front center armrest in fabric)
- Seats: Rear seat backrest, split-folding Avant (distinctive outer rear seats, visually matched to the front seats, and an additional central seating option - 3 rear L-shaped headrests, manually height-adjustable - three 3-point belts - rear seat backrest can be split 40:20:40 or fully folded - rear center armrest, one-piece and foldable, with storage compartment - with remote backrest release in the trunk, removable partition net, can be attached to the body or to the folded rear seat backrest)
- Start-Stop System (helps reduce fuel consumption and CO2 emissions by shutting off the engine when stationary, e.g., at traffic lights. For a restart, the starting process is initiated as soon as the foot brake is released. Can be deactivated at any time using a button.)
- Steering wheel: Leather steering wheel with multifunction
- tachometer
- Wheel: Light alloy wheels 10-spoke design (7.5J x 17 with tires 225/60 R17)



- Seats: Standard front seats (with manual adjustment of seat height, seat fore/aft position, backrest angle, headrest height and distance, and belt height)
- Sun visor on driver and passenger side
- Transmission: S tronic 7-speed
- Wheel: Tire repair kit

- Wheel: Tire pressure monitoring indicator (visual and acoustic warning in case of pressure loss on one or more wheels. Display in the Audi virtual cockpit plus)

### Extra equipment

- Swiveling trailer coupling with electric release (with swiveling ball head, trailer stabilisation via the electronic stabilisation control (ESC), release via button in the luggage compartment, the integrated, swivelling system socket enables continuous operation of electrical devices in the trailer or caravan while driving)
- High beam assistant (within the system's limits, automatically detects the headlights of oncoming traffic, the taillights of other road users, and towns. Depending on the traffic situation, the high beam is automatically switched on or off.)
- Tour Assistance Package (Adaptive Cruise Control, adaptive cruise control assists within system limits when accelerating, braking, and maintaining speed and distance with lane guidance assist - Efficiency Assist - Turn Assist, monitors the oncoming lane using data from the radar sensor and the front camera as soon as the indicator is activated - Evasion Assist, helps the driver steer the vehicle around an obstacle in a critical situation - Emergency Assist)
- Wheel: Audi new car tire warranty (36 months from vehicle handover to the first customer)
- Seats: 4-way lumbar support (electrically adjustable, horizontally and vertically)
- Front seat heating (heats the seat and backrest centre panels; with leather upholstery, sports seats and sports seats plus also seat side bolsters - individually adjustable in several stages for the driver and front passenger side on the climate control panel)

- Electrically adjustable, heated, and folding exterior mirrors with automatic dimming on both sides (including automatic curb-check function for the passenger exterior mirror with integrated LED indicators, including heated windshield washer nozzles, and aspherical mirror glass. The automatic curb-check function lowers the passenger exterior mirror when reverse gear is engaged, giving the driver a better view of the curb.)
- Paint finish: metallic
- Steering wheel: Double-spoke leather steering wheel with multifunction, shift paddles and steering wheel heating (shift paddles enable manual gear changes. The steering wheel rim is also heated)
- Business Package (Tour Assistance Package (Adaptive Cruise Control, Efficiency Assist, Turn Assist, Evasion Assist, Emergency Assist) - 4-zone comfort automatic climate control - Heated front seats - Audi phone box - Automatically dimming interior mirror - Automatically dimming exterior mirrors - Adaptive windshield wipers with integrated washer nozzles - High beam assist)
- Rear view camera (The rear view camera shows the detection area behind the vehicle in the upper display. Dynamic display elements such as a lane calculated based on the steering angle support parking or maneuvering.)
- Glazing: Sun protection glazing tinted (rear window, rear door and side windows tinted)

### Brief expert findings

Documents submitted	At the time of the inspection, the registration certificate Part 2 (letter) was available, but the registration certificate Part 1 (certificate) was not. (Copy)
VIN comparison	The vehicle identification number (VIN) was read from the vehicle and its conformity with the submitted documents was verified during the inspection by the undersigned.
Inspection	The inspection conditions were sufficient for the assessment of the vehicle. Lifting equipment and a pit were available for examining the vehicle.
Test drive	A short maneuvering and shunting trip was carried out on the company premises.
Engine function test	An engine test run was performed.

### Value reducing factors

No.	Component group	Description
1	Door - front right side	Door - Scratch(es) - Smart repair
2	Door - rear left side	Door - Scratch(es) - Smart repair
3	Trim / covers	D-pillar trim - interior, left side - Scratched - Replace
4	Rear bumper	Rear bumper - Scratch(es) - Paint



No.	Component group	Description
5	Front bumper	Front bumper - Scratch(es) - Paint
6	Bonnet	Bonnet - Stone chips - Paint

## Wear and tear

No.	Component group	Description
1	Side panel - rear right side	Sill - Scratch(es) - No deduction
2	Vehicle glazing	Windscreen - Stone chips - No deduction
3	Roof	Roof - Stone chips - No deduction
4	Side panel - rear left side	Side panel - Soiled - No deduction

The vehicle shows signs of wear commensurate with its age and use.

## Previous damages

No.	Previous damage	Extent of damage (Net)
1	Front, Provided by user / customer, from 29 Feb 2024	548,59 €

## Order/Scope of order

The order was placed to prepare a sales report for the vehicle described. This includes the following:

- Description of core relevant information about the vehicle
- Documentation of equipment features  
(*Delivery by third-party service providers*)
- Documentation of damage, defects, missing parts
- Documentation of previous damage, unrepaired previous damage, repainting
- a brief visual or functional inspection of the equipment details if possible.  
(*Functional tests of driver assistance systems are not included in the scope of services!*)
- a photo documentation of the vehicle

## Basis for the order

This product is based on the Alphabet Fuhrpark GmbH guidelines for vehicle returns and valuations. The expert makes the explicit findings in each individual case objectively within the framework of the specified standards based on his or her own expertise.

The vehicle inspection takes place in a disassembled state.

Damage or defects that can only be detected during disassembly/diagnosis work or through advanced knowledge remain within the scope of the prognosis risk. An extended risk exists for concealed defects caused by fraudulent deception and not identifiable by the expert.

Damage or defects resulting from normal use or wear and tear of the vehicle will be accepted according to the applicable standard.

There was no explicit identification or monetary consideration of the expected features within the product.

Features which in their nature and severity slightly exceed normal use but do not constitute unacceptable damage will be documented and identified under signs of use if necessary.

Damage or defects which, according to the underlying standard, can no longer be attributed to normal use or wear and tear are listed in the product under "Depreciating Factors".

Depending on the product specification, a monetary ID can be provided. If this takes place, the costs can be 100% d or pro rata depending on the vehicle's age and mileage.



## Previous damages

According to available information previous damages were repaired at the vehicle. Traces of repairs, which allow conclusions about the area of repair, were not recognizable during the inspection.





Figure 1: Diagonal front (left)



Figure 2: Diagonal front (right)



Figure 3: Diagonal rear (left)



Figure 4: Diagonal rear (right)



Figure 5: Interior - front



Figure 6: Interior - rear





Figure 7: Instrument cluster



Figure 8: Instrument panel



Figure 9: interior 360° view



Figure 10: Cargo area

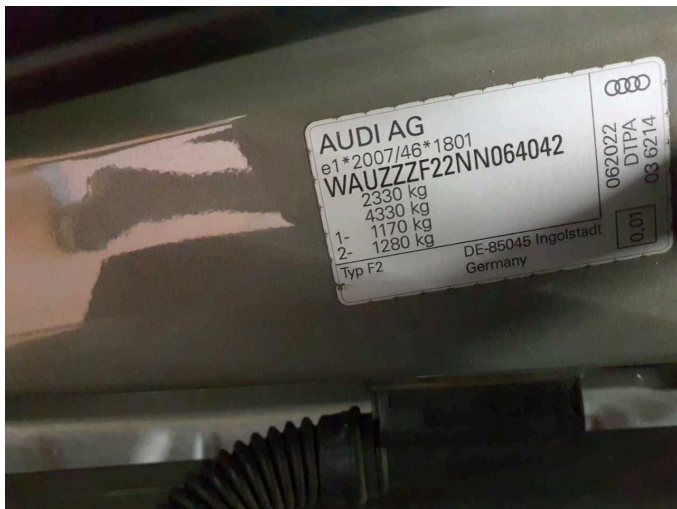


Figure 11: VIN



Figure 12: Mounted tyres



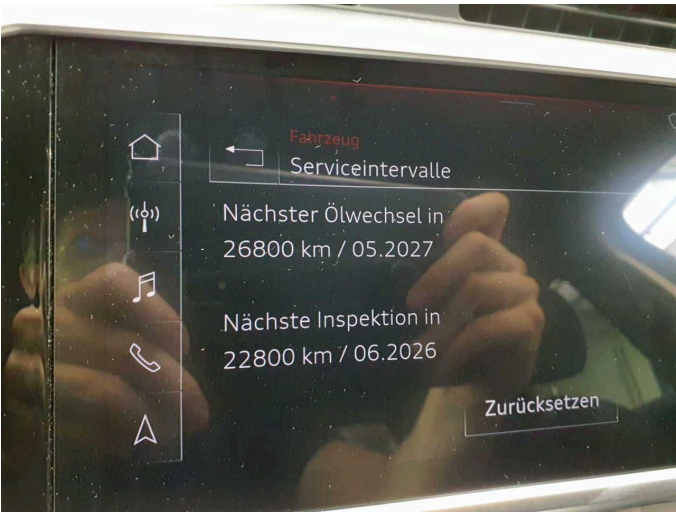


Figure 13: Documents



Figure 14: Documents



Figure 15: Documents



Figure 16: Additional tyres



Figure 17: Navigation



Figure 18: Misc.





Figure 19: Misc.



Figure 20: Misc.

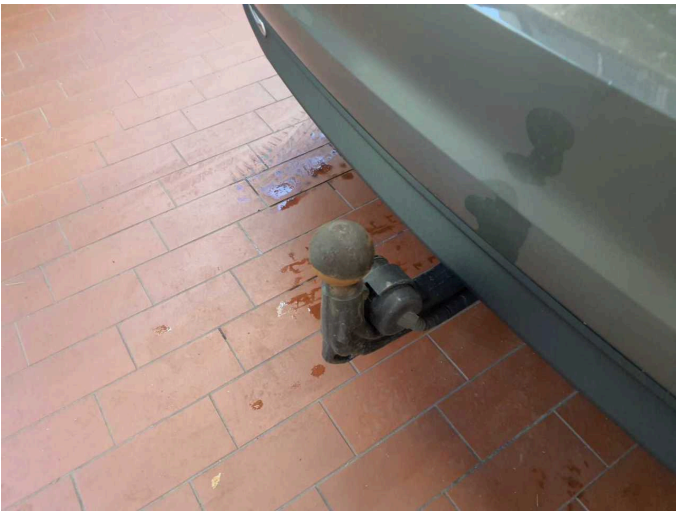


Figure 21: Misc.



Figure 22: Misc.



Figure 23: Misc.



Figure 24: Misc.





Figure 25: Misc.



Figure 26: Misc.

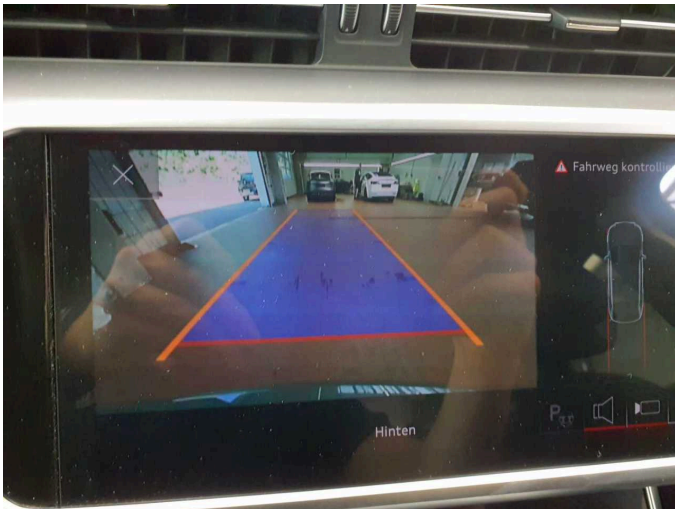


Figure 27: Misc.



Figure 28: Misc.



Damage 1: Door - front right side: Door - Scratch(es) - Smart repair



Damage 1: Door - front right side: Door - Scratch(es) - Smart repair





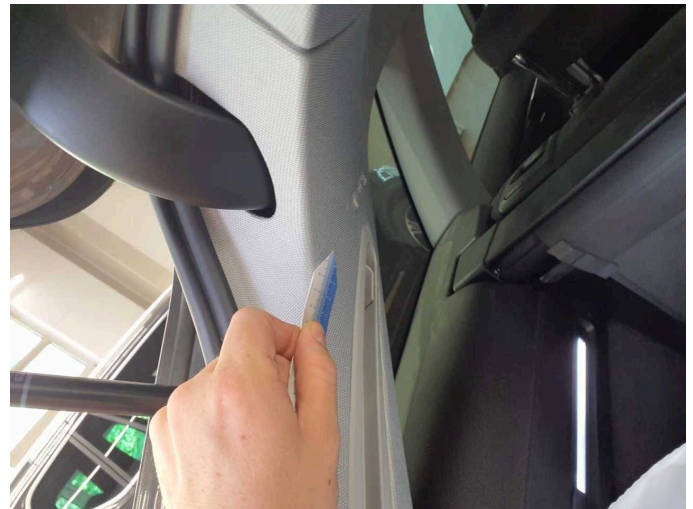
**Damage 2:** Door - rear left side: Door - Scratch(es) - Smart repair



**Damage 2:** Door - rear left side: Door - Scratch(es) - Smart repair



**Damage 3:** Trim / covers: D-pillar trim - interior, left side - Scratched - Replace



**Damage 3:** Trim / covers: D-pillar trim - interior, left side - Scratched - Replace



**Damage 4:** Rear bumper: Rear bumper - Scratch(es) - Paint



**Damage 4:** Rear bumper: Rear bumper - Scratch(es) - Paint

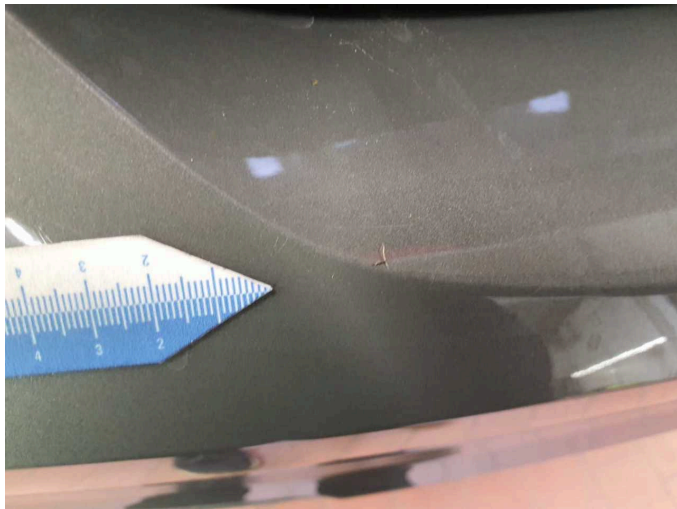




**Damage 4:** Rear bumper: Rear bumper - Scratch(es) - Paint



**Damage 4:** Rear bumper: Rear bumper - Scratch(es) - Paint



**Damage 4:** Rear bumper: Rear bumper - Scratch(es) - Paint



**Damage 5:** Front bumper: Front bumper - Scratch(es) - Paint



**Damage 5:** Front bumper: Front bumper - Scratch(es) - Paint



**Damage 5:** Front bumper: Front bumper - Scratch(es) - Paint





**Damage 5:** Front bumper: Front bumper - Scratch(es) - Paint



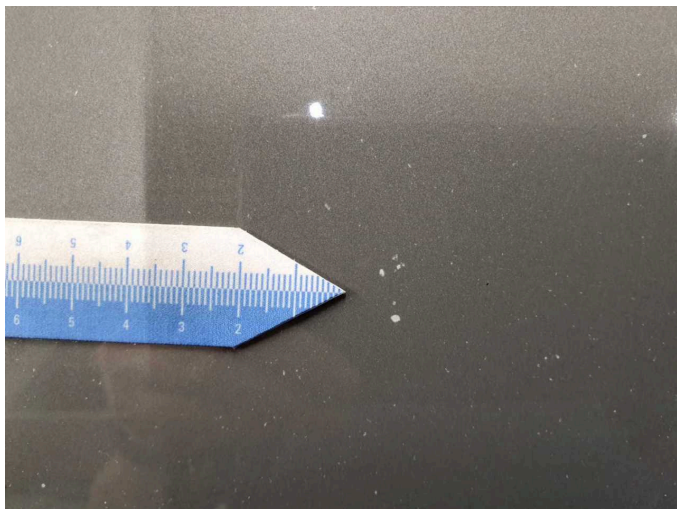
**Damage 5:** Front bumper: Front bumper - Scratch(es) - Paint



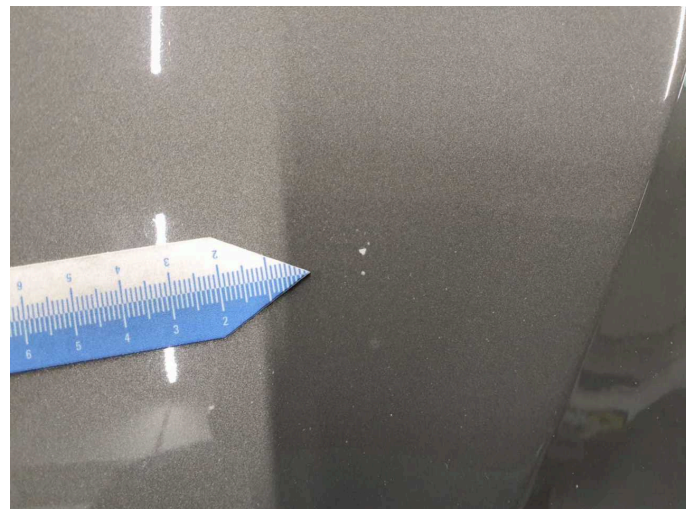
**Damage 5:** Front bumper: Front bumper - Scratch(es) - Paint



**Damage 5:** Front bumper: Front bumper - Scratch(es) - Paint



**Damage 6:** Bonnet: Bonnet - Stone chips - Paint



**Damage 6:** Bonnet: Bonnet - Stone chips - Paint





**Damage 6:** Bonnet: Bonnet - Stone chips - Paint



**Damage 6:** Bonnet: Bonnet - Stone chips - Paint



**Wear and tear 2:** Vehicle glazing: Windscreen - Stone chips - No deduction



**Wear and tear 4:** Side panel - rear left side: Side panel - Soiled - No deduction



**Wear and tear 4:** Side panel - rear left side: Side panel - Soiled - No deduction



# Wartungshistorie

(gemäß Auftraggeber Informationen)

Fahrgestellnummer: WAUZZZF22NN064042  
Hersteller / Modell: AUDI AUDI A6 Avant 40 TDI S tronic

Datum	KM-Stand	Beschreibung
03.07.2025	145.223	Bremsbelagfühler ern; Bremse Sonstiges; Bremsklötze hinten; Bremsklötze vorne; Bremsscheiben + Klötze h; Bremsscheiben + Klötze v; Bremsscheiben hinten; Bremsscheiben vorne
13.05.2025	154.365	Motoröl b. Wartung; Ölfilter ern; Regelwartungsdienst; Wartung Sonstiges
26.02.2025	144.100	Systemtest/Eigendiagnose
11.11.2024	122.475	Getriebeöl ern/prüfen; Kraftstofffilter ern; Motoröl b. Wartung; Ölfilter ern; Regelwartungsdienst; Reparatur Sonstiges; Systemtest/Eigendiagnose; Wartung Sonstiges
12.07.2024	107.031	Bremsflüssigkeit; Bremsflüssigkeit ern
28.03.2024	86.228	Bremsbelagfühler ern; Bremse Sonstiges; Bremsklötze hinten; Bremsklötze vorne; Bremsscheiben hinten; Luftfiltereinsatz ern; Motoröl b. Wartung; Ölfilter ern; Regelwartungsdienst; Wartung Sonstiges
01.03.2024	80.965	Systemtest/Eigendiagnose
28.02.2024	60.759	Getriebeöl ern/prüfen; Kraftstofffilter ern; Motoröl b. Wartung; Ölfilter ern; Regelwartungsdienst; Reparatur Sonstiges; Wartung Sonstiges
08.07.2023	48.052	Bremsbelagfühler ern; Bremse Sonstiges; Bremsklötze vorne; Bremsscheiben + Klötze v; Bremsscheiben vorne
13.03.2023	30.850	Motoröl b. Wartung; Ölfilter ern; Regelwartungsdienst; Wartung Sonstiges