



Expertise

Protocol number: 41614646  
Order No. / Reference: 25130158  
Inspection date: 19 Sept 2025

Manufacturer: Audi

Model: A6 Avant 50 TFSI e quattro S tronic sport

VIN: WAUZZZF21MN098973



Vehicle details	
Manufacturer / Type / Model / Equipment	
Audi A6 Avant 50 TFSI e quattro S tronic sport	
Vehicle Identification number	WAUZZZF21MN098973
Mileage (Read)	65,960 km
First registration	14 Jun 2021
Number of holders	1
Power / Engine displacement	195 kw / 1,984 ccm
Fuel type / Cylinder	Hybr.B/E ext. edition / 4
Gearbox / Number of gears	Automatic / 7
Type of drive	All-wheel drive
Type of vehicle	Station wagon
Colour / colour code	Gletscherweiss Metallic
Doors / Seats	5 / 5
Upholstery type	Cloth / leather combination
Colour of upholstery	Black
Vehicle with smoke odor	no



## Vehicle details

<b>Maintenance booklet / proof</b>	digital proof / complete	<b>Next maintenance in</b>	23,300 km
<b>Last maintenance on / at</b>	07/2025 at 63,968 km		
<b>Key is / should be</b>	2 / 2	<b>FZG documents</b>	ZB#2 (B) was available (copy), ZB#1 (S) was not available
		<b>Letter No.</b>	GC342019
<b>Previous damage / Accident</b>	None detectable	<b>Repainting</b>	None detectable
<b>Inspection conditions</b>	sufficient	<b>Lifting equipment / pit</b>	yes
<b>Test drive</b>	Not performed	<b>Engine function test</b>	Performed
<b>Manufacturer key number/ type code number</b>	0588 / BZE 00088		
<b>Emission standard</b>	EURO6;WLTP;AP;PI/CI; M, N1 I	<b>Fine dust sticker</b>	
<b>Permitted total weight</b>	2,675 kg	<b>Empty weight</b>	

## Tyres

### Mounted tyres

#	Tyre size	Type of tyre	Manufacturer	Tread depth
1)	245/45 R19 102Y	Summer tyres on Light alloy	Bridgestone	4mm / 4mm
2)	245/45 R19 102Y	Summer tyres on Light alloy	Bridgestone	5mm / 5mm

### Additional tyres

#	Tyre size	Type of tyre	Manufacturer	Tread depth
1)	225/55 R18 102V	Winter tyres on Light alloy	Pirelli	6mm / 6mm
2)	225/55 R18 102V	Winter tyres on Light alloy	Pirelli	7mm / 7mm

**Legend:** Tread depth information for tires on the left is in the first place, for tires on the right is in the second place on the axle in the direction of travel

## Equipment

### Standard equipment

- Airbag for driver and front passenger (full-size airbag, with passenger airbag deactivation)
- Acoustic vehicle warning system (generation of a warning tone to increase road safety for pedestrians and cyclists)
- "quattro" all-wheel drive with ultra technology (permanently available all-wheel drive with actively controlled torque distribution, ultra technology, and wheel-selective torque control. The system includes an electronically controlled all-wheel clutch, a traction clutch integrated into the rear axle differential, and an electronic differential lock (EDL) for all driven wheels. The ultra technology allows for a reduction in drag losses in the all-wheel drive train by opening both clutches.)
- Audi connect Emergency Call & Service m.connect Remote & Control (TFSI e) (The Audi connect Emergency Call & Service services ensure a feeling of security on every journey. - Emergency call - Online breakdown call - Audi damage service - Audi service appointment online Audi connect Remote & Control: - Vehicle status and vehicle data - Remote locking/unlocking - Parking position - Remote charging - Remote air conditioning - Push notification for the anti-theft alarm system)
- Audi pre sense front (Within system limits, it can warn of impending collisions depending on the situation and speed and initiate appropriate braking. The system is active from approximately 5 km/h. Pedestrians and cyclists can be detected in the speed range up to approximately 85 km/h, and vehicles in the speed range up to 250 km/h. If an impending frontal collision is detected, the system warns the driver visually, acoustically, and haptically using a multi-stage concept.)
- tachometer
- e-tron compact charging system (designed for charging from electrical outlets, a so-called Mode 2 charging system. It consists of a control unit including a vehicle connection cable and two different power cables (with household and industrial plugs). Manual switching between 100% and 50% charging power. LEDs indicate the status of the charging system and the charging process. Charging power on your vehicle up to 7.4 kW.)
- Remote control key (unlocking and locking of the doors, trunk lid, and fuel filler flap. The vehicle is authorized to drive away without actively operating the key (Keyless Go). The driver must be seated in the vehicle and carry the key. The engine is started and stopped using the engine start/stop button in the center console.)
- Airbag: Front side airbags and head airbag system (front side airbags integrated into the seat backrests - with additional head airbag system: unfolds in front of the side window area and thus protects front and outer rear passengers in the event of a side impact)
- Anti-lock braking system (ABS)
- Audi connect Navigation & Infotainment in conjunction with MMI Navigation plus with MMI Touch response (Online Points of Interest Online traffic information plus hazard information Weather information Access to calendar myAudi Navigation Wi-Fi hotspot Online news On-Street Parking Navigation with Google Earth Online search for navigation destinations Online voice input Amazon Alexa integration Highly detailed 3D city display Online radio Hybrid radio)
- Audi drive select (adjustment of the vehicle characteristics in the available modes auto, comfort, dynamic, efficiency, allroad, offroad, and individual by adjusting the steering assistance, engine characteristics and gearshift characteristics, dynamic all-wheel steering, damper control, adaptive air suspension, sport differential, ultra technology, adaptive cruise control, matrix LED headlights, and setting of other optional equipment.)
- Electrically adjustable and heated exterior mirrors (with integrated LED indicators, including heated windshield washer nozzles, aspherical mirror glass)
- Exterior mirror housings in body color
- Brake light, third
- Brake calipers, painted red
- Headlining fabric
- Decorative inserts Aluminium Fragment (for dashboard, door panels and centre console; including aluminium-look surrounds)
- Door sills with aluminum inlay front and rear (unlit)
- Electronic Stabilization Control (ESC)
- Driver information system with color display (7-inch color display Display contents: Speed (digital speedometer) Time, mileage, outside temperature, fuel warning with remaining range Gear shift recommendation Current radio station or music track, radio and media lists Telephone menu Information from navigation and tips from driver assistance systems (if available) On-board computer The integrated efficiency program supports the driver with consumption data overviews and saving tips for more economical driving Break recommendation)



- Cruise control including speed limiter (The cruise control maintains the desired speed between 20 and 250 km/h by adjusting engine power or actively applying the brakes, provided engine and brake performance permit. It is operated via a separate steering column stalk, including a display of the set speed in the driver information system. The speed limiter helps to ensure that a preset maximum speed is not exceeded.)
- Transmission: S tronic 7-speed
- Dimmable interior mirror
- ISOFIX and Top Tether child seat attachment for the outer rear seats (holding device for the practical attachment of ISOFIX child seats with an additional upper attachment point (Top Tether) on the outer rear seats)
- 4-zone comfort automatic climate control (separate temperature control for driver/passenger side, rear compartment air conditioning via air outlet in the rear center console, defroster for windshield/side windows, combined pollutant/fine dust filter, temperature and air conditioning settings for rear, left/right gear settings, air outlets in the B-pillar, rear climate control panel with touchscreen, efficient climate zone control possible via occupant recognition, automatic recirculation mode and sunlight-dependent control, dust and odor-separating allergen filter, residual heat utilization, personalization)
- Steering wheel: Sports leather steering wheel with multifunction and shift paddles (shift paddles allow manual gear changes).
- Front center armrest (adjustable in inclination, longitudinally movable)
- Gasoline particulate filter
- Gloss package (window channel trim in anodized aluminum - B-pillar trim outside in high-gloss black - rear light bar in chrome)
- Non-smoking package (no ashtray in the front center console, one 12-volt socket each at the front and rear)
- Progressive steering (increases driving dynamics and comfort through more direct steering response (e.g., on winding country roads or when turning) and reduced steering effort (e.g., when parking and maneuvering); driving characteristics through a steering ratio dependent on the steering angle and speed-dependent steering assistance; various modes, adjustable via Audi drive select)
- Radio: MMI Radio Plus with MMI touch response (8.8" color display - Driver information system with 7" TFT color display - Audi music interface; 2 USB-C ports with data and charging function - Bluetooth interface (hands-free calling and audio streaming) - Separate MMI touch control panel with 8.6" color display including MMI touch response with haptic feedback; for controlling the climate control function and input field for handwriting recognition - AM/FM phase diversity - Speed-dependent volume adjustment - DAB+)
- Seats: Front sports seats (with manual adjustment of seat height, seat fore/aft position, seat angle, backrest angle, headrest height and spacing, and seat belt height with pronounced seat side bolsters for better lateral support in curves, extendable thigh support, and electric 4-way lumbar support)
- Luggage compartment lid, electrically opening and closing (The luggage compartment lid can be opened electrically by pressing the button on the vehicle key, in the driver's door, or the soft-touch button on the luggage compartment handle. Closing the luggage compartment lid: Simply press the button on the inside of the luggage compartment lid, the button in the driver's door, or the button on the vehicle key. A6 Avant: Opening in low ceilings is made convenient thanks to a programmable opening angle.)
- Interior lighting (roof module front and rear, including reading lights (capacitively switched), illuminated vanity mirrors for driver and front passenger, entry lights on the underside of the front doors, interior door controls front/rear, storage compartment front, glove compartment, footwell lighting front/rear, trunk lighting right/left)
- Headrests (4) (manually height adjustable at the front)
- AC Type 2 charging socket (charging access to the high-voltage battery via AC)
- Mode 3 charging cable (charging cable for charging at public AC charging stations (Type 2). The cable connects the charging station to the vehicle's AC charging port and enables a charging power of up to 7.4 kW on your vehicle.)
- LED headlights (The headlights have the following functions: - Daytime running lights - Low beam - High beam - Position light - Indicator light with bulb technology - All-weather light (to reduce glare in poor visibility conditions) LED rear lights - Indicator, brake, tail, reversing and rear license plate lights with LED technology)
- Steering column, manually height and axially adjustable
- MMI Navigation Plus with MMI Touch Response (10.1-inch color display, additional display of navigation maps and arrows in the driver information system, map updates, 3D map display, efficiency assistance, online traffic information, MMI search, MMI Touch Response for fast, intuitive operation, natural language interaction, detailed route information, input of up to 10 intermediate destinations, entire Audi connect navigation & infotainment portfolio, Audi virtual cockpit, 12.3-inch color display, Audi sound system, 10 speakers, Audi smartphone interface)
- Wheel: Light alloy wheels 5-arm design (8 J x 18 with tires 225/55 R 18)
- Wheel: Tire pressure monitoring indicator (visual and acoustic warning in case of pressure loss on one or more wheels - display in the driver information system)
- Wheel: Tire repair kit
- Radio accessories: Audi sound system (10 speakers including center speaker and subwoofer - 6-channel amplifier - total output of 180 watts)
- Seat covers in fabric
- Seats: 4-way lumbar support (electrically adjustable, horizontally and vertically)



- Sun visor on driver and passenger side
  - Auxiliary climate control (The standard auxiliary climate control cools or warms the interior as needed before starting a journey, ensuring a very high level of climate comfort as soon as you enter the vehicle. The auxiliary climate control can be programmed or activated via the MMI and conveniently switched on via the smartphone app, regardless of whether the vehicle is charging at the time. A "short-term climate control" can be started when unlocking the vehicle with the remote key.)
  - Phone: Audi smartphone interface (The Audi smartphone interface (Android Auto and Apple CarPlay) connects your smartphone to your Audi and seamlessly displays your smartphone content directly on the MMI display via USB. Navigation, telephony, music, and selected third-party apps can be conveniently controlled via the MMI touch display and via voice control on your smartphone.)
  - Electronic immobilizer
  - Central locking
- Seats: Rear seat backrest, split-folding Avant (distinctive outer rear seats, visually matched to the front seats, and an additional central seating option - 3 rear L-shaped headrests, manually height-adjustable - three 3-point belts - rear seat backrest can be split 40:20:40 or fully folded - rear center armrest, one-piece and foldable, with storage compartment - with remote backrest release in the trunk, removable partition net, can be attached to the body or to the folded rear seat backrest)
  - Lane Departure Warning (helps prevent unintentional lane departure within system limits. If the system is activated and ready, and the driver has not activated the turn signal, the Lane Departure Warning helps prevent crossing detected lane markings by correcting the steering. An additional steering wheel vibration can be adjusted upon driver request. Functional range from approximately 60 to a maximum of 250 km/h.)
  - Start-Stop System (helps reduce fuel consumption and CO2 emissions by shutting off the engine when stationary, e.g., at traffic lights. For a restart, the starting process is initiated as soon as the foot brake is released. Can be deactivated at any time using a button.)
  - Glazing: Windscreen in thermal insulation glazing (windscreen in laminated safety glass)
  - Glazing: Rear window, rear door and side windows in clear glass
  - Heat-insulating glazing on the sides and rear (green tinted rear window heated, with timer)

### Extra equipment

- Airbags: Front and rear side airbags including head airbag system and illuminated seat belt buckles (Rear side airbags complement the front side airbags and head airbag system and provide additional protection for rear passengers. Illuminated seat belt buckles increase passenger comfort and enhance the interior with subtle, high-quality lighting.)
  - Glossy black control buttons with haptic feedback and aluminum-look interior (control button bar in the center console and light buttons in glossy black, control button and light button bar with haptic feedback - light button bar including proximity sensor - control buttons for driver assistance systems, buttons for the parking brake, auto-hold function, central locking at the front and rear, rear locking, frame around the interior door controls and window lifters in aluminum look)
  - Convenience key with sensor-controlled trunk release (The vehicle can be opened by operating the door handle without actively using the key. To lock the vehicle from the outside, simply touch one of the sensor buttons on the door handles. The drive-away authorization is also released without actively operating the convenience key. The driver must be sitting in the vehicle and carrying the convenience key. The engine is started and stopped using the engine start/stop button in the center console.)
- Audi connect key (The smartphone performs the functions of the vehicle key: opening and closing the vehicle and starting the engine. Up to five digital vehicle keys can be given to other people via the myAudi app on the smartphone. Furthermore, temporary access and/or driving authorization can be granted via the Audi connect key card, eliminating the need to share the vehicle key or smartphone with third parties (e.g., valet parking).
  - Head-up display (projects the speed and other driver-relevant information from optional equipment such as assistance systems and navigation, as well as warnings, into the driver's direct field of vision; height adjustable; enables high-contrast, multi-color display with reduced distraction from the road)
  - ISOFIX child seat attachment for the front passenger seat (with passenger airbag deactivation switch including electric child lock for the rear doors)
  - Headrests: variable headrests for front seats (with manual adjustment of headrest height and distance)
  - Paint finish: metallic
  - Steering wheel: 3-spoke leather steering wheel with multifunction plus and heated steering wheel (paddle shifters allow manual gear changes. The steering wheel rim is also heated.)



- Business Package (Tour Assistance Package Adaptive Driving Assistant supports the driver with acceleration, braking, maintaining speed and distance, and lane guidance. Adaptive Cruise Control, Cruise Control, Efficiency Assistant supports the driver with predictive parking. Parking aid plus 4-zone automatic climate control. Heated front seats. Audi phone box. Automatically dimming interior mirror. Automatically dimming exterior mirror. Adaptive windshield wipers with integrated washer nozzles. High beam assistant.)
- S line sports package (5-spoke light alloy wheels (S-Design), 8.5J x 19 with 245/45 R19 tires, sports suspension, illuminated front and rear entry lights, front with S lettering, S line emblem on the front fender, leather-trimmed sport steering wheel with multifunction and gearshift, steering wheel and selector lever knob with S emblem in high-quality leather, S line seat covers in sequence fabric/leather combination with S embossing on the front seat backrests, brushed dark matt aluminum decorative inserts, interior, dashboard and headliner in black, stainless steel footrest and pedals, floor mats)
- Parking Assistant with Parking Aid Plus (The parking assistant assists with parking and reversing through appropriate steering maneuvers. Ultrasonic sensors search for suitable parallel or perpendicular parking spaces. The ideal parking path is calculated for perpendicular parking spaces (forwards and backwards), and the ideal entry and exit path is calculated for parallel parking spaces. The system takes over the steering process. The driver only needs to change gears, accelerate, brake, and monitor the parking maneuver following instructions on the display.)
- Package storage (2 cup holders in the rear center armrest, luggage compartment net for securing to the lashing eyes on the luggage compartment floor, 2 additional safety vests for the rear passengers)
- S line exterior package (S-specific front and rear bumpers with S line-specific inserts (honeycomb structure), S line-specific side air intake grilles in matt titanium black with platinum gray inserts, radiator grille in matt titanium black with slats in matt aluminum silver, S-specific side sill/door trim strips painted in body color, door sill trims with aluminum inserts front and rear, illuminated, with S lettering at the front, S line emblem on the front fenders, S line-specific diffuser insert with tailpipe optics in matt aluminum silver)
- Package: Ambient Lighting Package Plus (Contour lighting for front/rear doors, color-coordinated - Ambient fabric panel lighting for front/rear doors, color-coordinated - Ambient lighting for front center console, color-coordinated - Contour lighting for front center console, color-coordinated - Contour lighting with illuminated quattro logo (with all-wheel drive) on the instrument panel on the passenger side, color-coordinated - Ambient lighting for the instrument panel)
- Wheel: Light alloy wheels 5-twin-spoke design, graphite grey, high-sheen (8.5 J x 19 with 245/45 R 19 tires)
- Radio accessories: Audi music interface in the rear (2 additional USB ports with charging and data function in the rear in addition to 2 interfaces in the front for playing music from a portable storage device (USB, smartphone, MP3 player))

## Brief expert findings

Documents submitted	At the time of the inspection, the registration certificate Part 2 (letter) was available, but the registration certificate Part 1 (certificate) was not. (Copy)
VIN comparison	The vehicle identification number (VIN) was read from the vehicle and its conformity with the submitted documents was verified during the inspection by the undersigned.
Inspection	The inspection conditions were sufficient for the assessment of the vehicle. Lifting equipment and a pit were available for examining the vehicle.
Test drive	No test drive/maneuvering was carried out during the inspection of the vehicle.
Engine function test	An engine test run was performed.

## Value reducing factors

No.	Component group	Description
1	Sill - left side	Sill - Scratched - Smart repair
2	Bonnet	Bonnet - Stone chips - Smart repair
3	Measurement	Undercarriage (3 Felgen beschädigt) - Perform
4	Rear bumper	Spoiler - Damaged - Replace
5	Sill - right side	Sill - Scratched - Paint
6	Front bumper	Front bumper - Scratched - Paint
7	Side panel - rear left side	Side panel - Dent / paintcoat damage - Repair and paint
8	Wheel / tyres	Alloy rim - rear right side - Scratched - Replace
9	Wheel / tyres	Alloy rim - front right side - Scratched - Replace





No.	Component group	Description
10	Wheel / tyres	Alloy rim - rear left side - Scratched - Replace
11	Rear bumper	Rear bumper - Damaged - Replace

## Wear and tear

No.	Component group	Description
1	Vehicle glazing	Windscreen - Stone chips - No deduction
2	Roof	Roof - dent(s) - No deduction

The vehicle shows signs of wear commensurate with its age and use.

## Order/Scope of order

The order was placed to prepare a sales report for the vehicle described. This includes the following:

- Description of core relevant information about the vehicle
- Documentation of equipment features  
(*Delivery by third-party service providers*)
- Documentation of damage, defects, missing parts
- Documentation of previous damage, unrepaired previous damage, repainting
- a brief visual or functional inspection of the equipment details if possible.  
(*Functional tests of driver assistance systems are not included in the scope of services!*)
- a photo documentation of the vehicle

## Basis for the order

This product is based on the Alphabet Fuhrpark GmbH guidelines for vehicle returns and valuations. The expert makes the explicit findings in each individual case objectively within the framework of the specified standards based on his or her own expertise.

The vehicle inspection takes place in a disassembled state.

Damage or defects that can only be detected during disassembly/diagnosis work or through advanced knowledge remain within the scope of the prognosis risk. An extended risk exists for concealed defects caused by fraudulent deception and not identifiable by the expert.

Damage or defects resulting from normal use or wear and tear of the vehicle will be accepted according to the applicable standard.

There was no explicit identification or monetary consideration of the expected features within the product.

Features which in their nature and severity slightly exceed normal use but do not constitute unacceptable damage will be documented and identified under signs of use if necessary.

Damage or defects which, according to the underlying standard, can no longer be attributed to normal use or wear and tear are listed in the product under "Depreciating Factors".

Depending on the product specification, a monetary ID can be provided. If this takes place, the costs can be 100% d or pro rata depending on the vehicle's age and mileage.

## Previous damages

Apparently, no repaired previous damage could be found on the vehicle.

## Comments

- Winterradsatz ist kein Bestandteil des Auslieferumfangs.



**Figure 1:** Diagonal front (left)



**Figure 2:** Diagonal front (right)



**Figure 3:** Diagonal rear (left)



**Figure 4:** Diagonal rear (right)



**Figure 5:** Interior - front



**Figure 6:** Interior - rear





Figure 7: Instrument cluster



Figure 8: Instrument panel



Figure 9: Interior 360° view



Figure 10: Cargo area



Figure 11: VIN



Figure 12: Mounted tyres





Figure 13: Documents

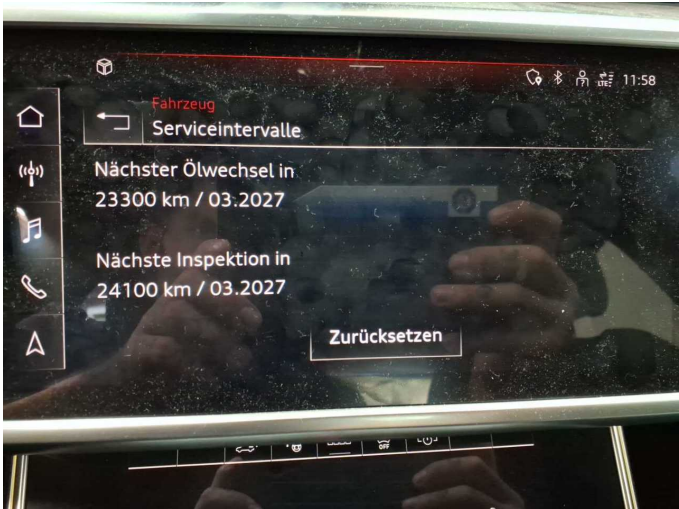


Figure 14: Documents



Figure 15: Additional tyres



Figure 16: Navigation



Figure 17: Misc.



Figure 18: Misc.



Figure 19: Misc.



Figure 20: Misc.



Figure 21: Misc.

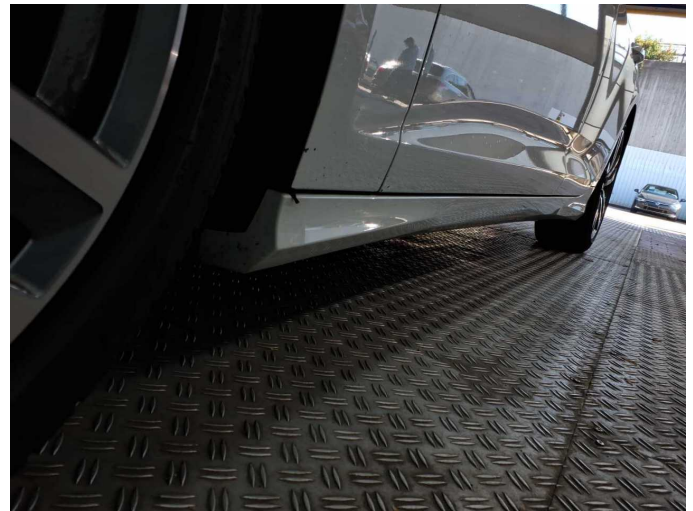


Figure 22: Misc.

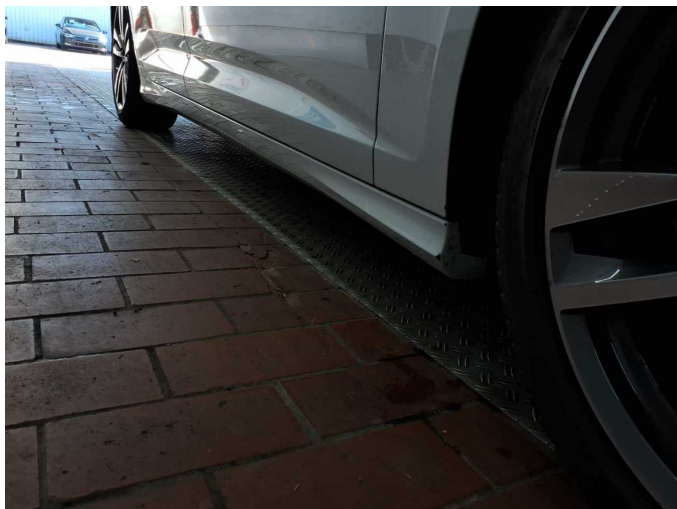


Figure 23: Misc.

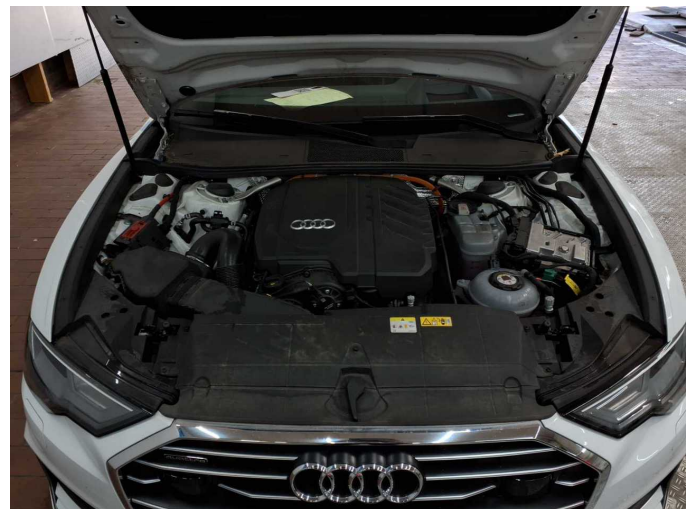


Figure 24: Misc.





Figure 25: Misc.



Figure 26: Misc.



Figure 27: Misc.



Figure 28: Misc.



Figure 29: Misc.



Figure 30: Misc.





**Figure 31:** Misc.



**Figure 32:** Misc.



**Damage 1:** Sill - left side: Sill - Scratched - Smart repair



**Damage 1:** Sill - left side: Sill - Scratched - Smart repair



**Damage 2:** Bonnet: Bonnet - Stone chips - Smart repair



**Damage 2:** Bonnet: Bonnet - Stone chips - Smart repair



**Damage 4:** Rear bumper: Spoiler - Damaged - Replace



**Damage 4:** Rear bumper: Spoiler - Damaged - Replace



**Damage 4:** Rear bumper: Spoiler - Damaged - Replace



**Damage 5:** Sill - right side: Sill - Scratched - Paint



**Damage 5:** Sill - right side: Sill - Scratched - Paint



**Damage 5:** Sill - right side: Sill - Scratched - Paint





**Damage 5:** Sill - right side: Sill - Scratched - Paint



**Damage 6:** Front bumper: Front bumper - Scratched - Paint



**Damage 6:** Front bumper: Front bumper - Scratched - Paint



**Damage 6:** Front bumper: Front bumper - Scratched - Paint



**Damage 6:** Front bumper: Front bumper - Scratched - Paint



**Damage 6:** Front bumper: Front bumper - Scratched - Paint



**Damage 6:** Front bumper: Front bumper - Scratched - Paint



**Damage 6:** Front bumper: Front bumper - Scratched - Paint



**Damage 6:** Front bumper: Front bumper - Scratched - Paint



**Damage 6:** Front bumper: Front bumper - Scratched - Paint



**Damage 7:** Side panel - rear left side: Side panel - Dent / paintcoat damage - Repair and paint



**Damage 7:** Side panel - rear left side: Side panel - Dent / paintcoat damage - Repair and paint





**Damage 7:** Side panel - rear left side: Side panel - Dent / paintcoat damage - Repair and paint



**Damage 8:** Wheel / tyres: Alloy rim - rear right side - Scratched - Replace



**Damage 8:** Wheel / tyres: Alloy rim - rear right side - Scratched - Replace



**Damage 8:** Wheel / tyres: Alloy rim - rear right side - Scratched - Replace



**Damage 8:** Wheel / tyres: Alloy rim - rear right side - Scratched - Replace



**Damage 8:** Wheel / tyres: Alloy rim - rear right side - Scratched - Replace





**Damage 9:** Wheel / tyres: Alloy rim - front right side - Scratched - Replace



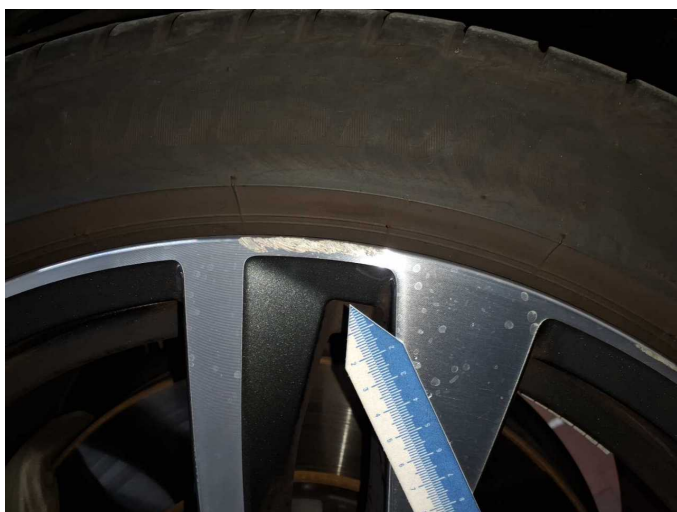
**Damage 9:** Wheel / tyres: Alloy rim - front right side - Scratched - Replace



**Damage 9:** Wheel / tyres: Alloy rim - front right side - Scratched - Replace



**Damage 9:** Wheel / tyres: Alloy rim - front right side - Scratched - Replace



**Damage 9:** Wheel / tyres: Alloy rim - front right side - Scratched - Replace



**Damage 10:** Wheel / tyres: Alloy rim - rear left side - Scratched - Replace



**Damage 10:** Wheel / tyres: Alloy rim - rear left side - Scratched - Replace



**Damage 11:** Rear bumper: Rear bumper - Damaged - Replace



**Damage 11:** Rear bumper: Rear bumper - Damaged - Replace



**Damage 11:** Rear bumper: Rear bumper - Damaged - Replace



**Damage 11:** Rear bumper: Rear bumper - Damaged - Replace



**Damage 11:** Rear bumper: Rear bumper - Damaged - Replace





**Damage 11:** Rear bumper: Rear bumper - Damaged - Replace



**Damage 11:** Rear bumper: Rear bumper - Damaged - Replace



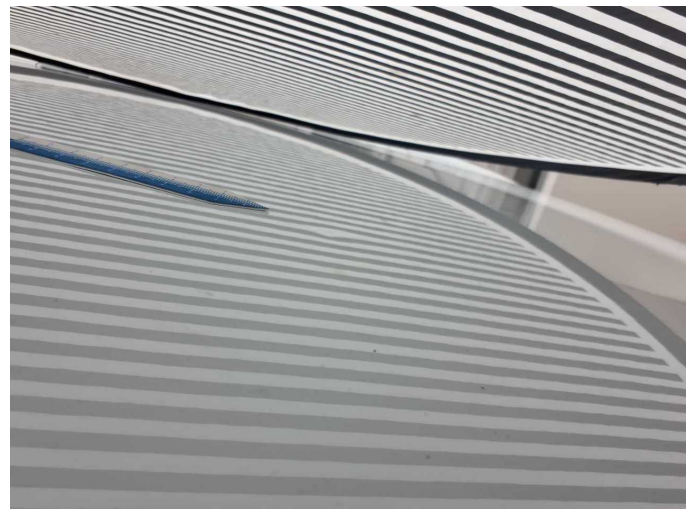
**Damage 11:** Rear bumper: Rear bumper - Damaged - Replace



**Damage 11:** Rear bumper: Rear bumper - Damaged - Replace



**Wear and tear 2:** Roof: Roof - dent(s) - No deduction



**Wear and tear 2:** Roof: Roof - dent(s) - No deduction





# Wartungshistorie

(gemäß Auftraggeber Informationen)

Fahrgestellnummer: WAUZZZF21MN098973

Hersteller / Modell: AUDI AUDI A6 Avant 50 TFSI e quattro S tronic sport

Datum	KM-Stand	Beschreibung
04.07.2025	63.968	Bremsflüssigkeit; Bremsflüssigkeit ern
10.03.2025	59.231	Bremsbelagfühler ern; Bremse Sonstiges; Bremsklötze vorne; Bremsscheiben vorne; Getriebeöl ern/prüfen; Motoröl b. Wartung; Ölfilter ern; Regelwartungsdienst; Wartung Sonstiges; Zündkerzen ern
13.08.2024	52.885	HU + AU; Systemtest/Eigendiagnose
26.07.2023	38.531	Bremsflüssigkeit; Bremsflüssigkeit ern; Systemtest/Eigendiagnose
24.02.2023	29.849	Motoröl b. Wartung; Ölfilter ern; Regelwartungsdienst; Wartung Sonstiges