



AUDI A6

A6 40 TDI S tronic

VIN NO WAUZZZF21LN004704
Registration Number 21LN004704



MOT Date

2026-10-01

Last Service

2025-05-14

Number of Owners

1

Last Service Mileage

136211

Number of Keys

2

First Registration Date

2019-11-05

Odometer Reading

141408 km

Country First Registered

Germany

Inspection Report Summary

Customer	BCA Online	Report Number	P20250915113256
Inspection Date / Place	2025-09-15 / ARS Altmann AG Riedstadt	Cosmetic Grade	4

Vehicle Summary

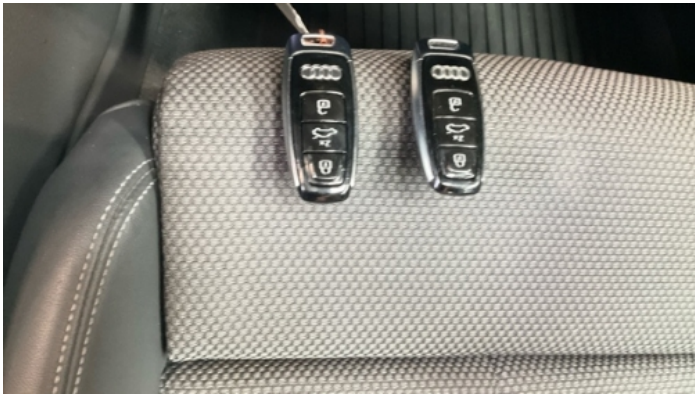
Vehicle Condition	Runner	VAT Type	Qualifying
Fuel Type	Diesel	Road Worthy	Yes
Colour	Black	Engine Size (cc)	1968
Engine Size	2.0	No of Doors	4
Body Type	Sedan	Drive Train	Front
Seat Colour		No of Seats	4
Seat Covering Name	schwarz	Seat Covering	Cloth
Charging Cables		WLTP CO2 Emissions	
Gearbox Type	Automatic		

Vehicle History & Documents

Service Book Available	Present	Next Service Mileage	km
Previous Usage		Imported	No
Manufacturer Warranty			







Equipment

Tow ball	USB Socket	Alloys wheels	Bluetooth telephone interface
Diesel particulate filter	Heated wing mirrors	Remote central locking	Sports seats
Central locking	Electric tailgate	LED Headlamps	Radio
Trip Computer	Airbag Status	Anti-lock braking	Cruise control
Front parking sensors	Remote adjusting wing mirrors	Satellite navigation	Stability control
Electrically folding wing mirrors	Leather steering wheel	Privacy glass	Rear parking sensors

Equipment Details

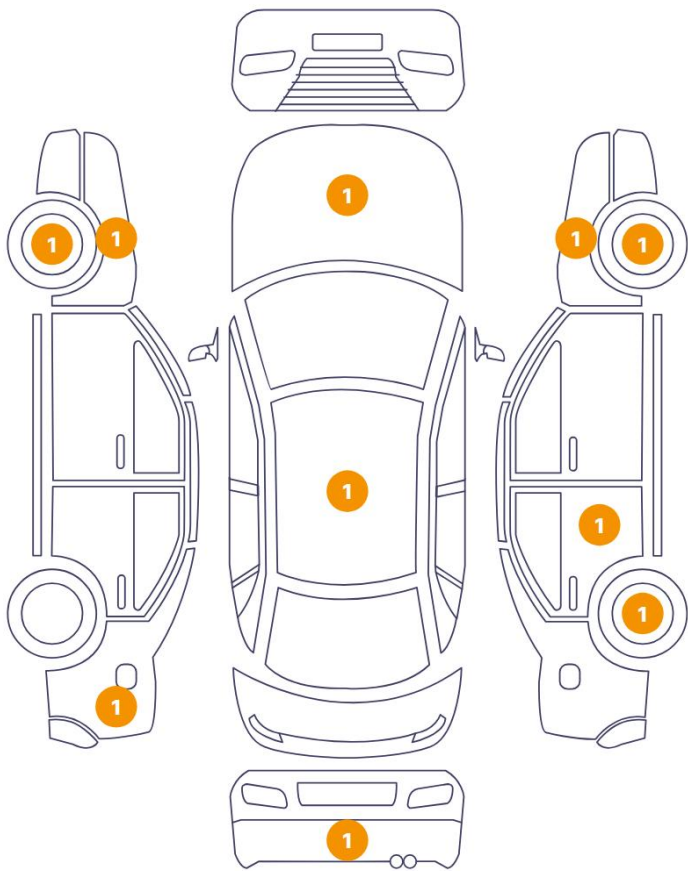
Air Conditioning	Dual Zone Climate Control	Alloy Wheel Size	19
Extra Wheel / Tyre Set	Winter Tyres - Alloy	Satellite Navigation	MMI Navigation
Seat Heating	Front		

Wheels & Tyres

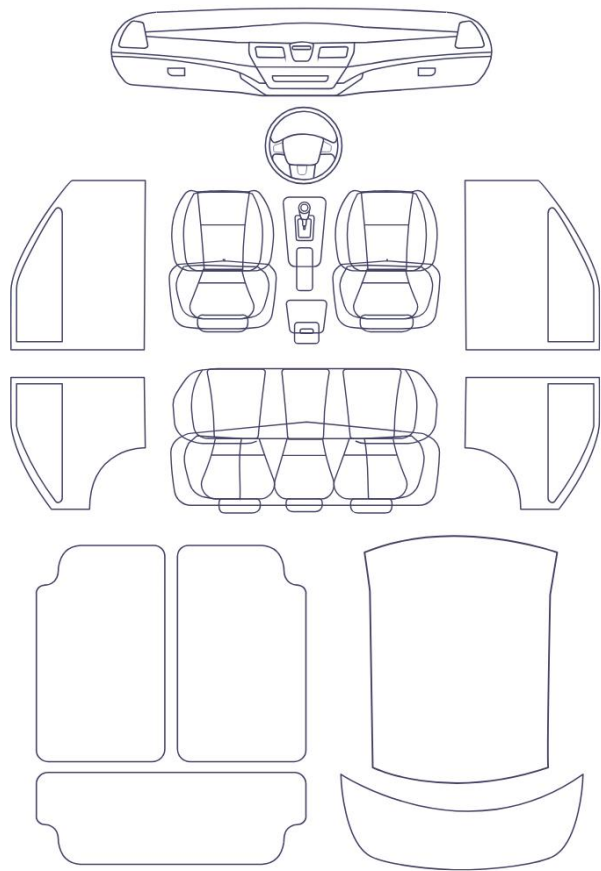
Right Front Tyre Depth	5	Left Front Tyre Depth	5
Right Rear Tyre Depth	6	Left Rear Tyre Depth	6
Extra Wheel - 1 Tyre Depth	6	Extra Wheel - 2 Tyre Depth	5
Extra Wheel - 3 Tyre Depth	6	Extra Wheel - 4 Tyre Depth	5

Cosmetic Damage

10 Schäden



0 Schäden



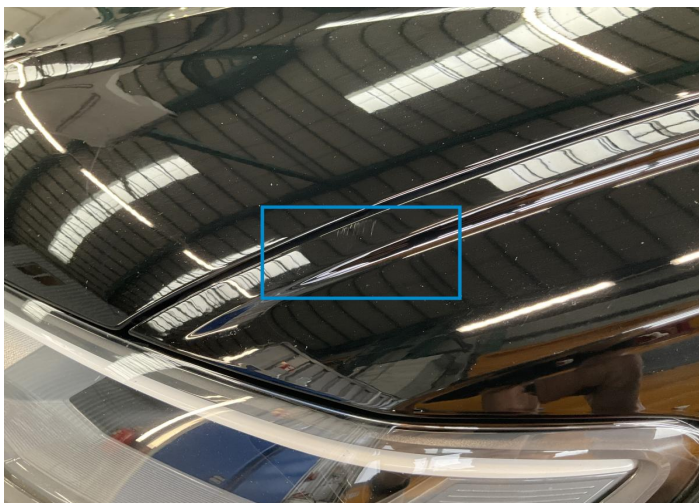
Component		Damage	Comments
1	Hood	Paint / Stone Chip	
2	Rim / Front Left	Out of Bodywork / Scratch	
3	Fender / Front Left	Paint / Scratch / Scuff	
4	Roof	Paint / Scratch / Scuff	
5	Side Panel / Back Left	Paint / Scratch / Scuff	
6	Bumper / Back	Bodywork / Dent / Dent	
7	Rim / Back Right	Out of Bodywork / Scratch	
8	Pillar / Back Right	Paint / Scratch / Scuff	
9	Rim / Front Right	Out of Bodywork / Scratch	
10	Fender / Front Right	Paint / Stone Chip	



1. Hood
Paint / Stone Chip -



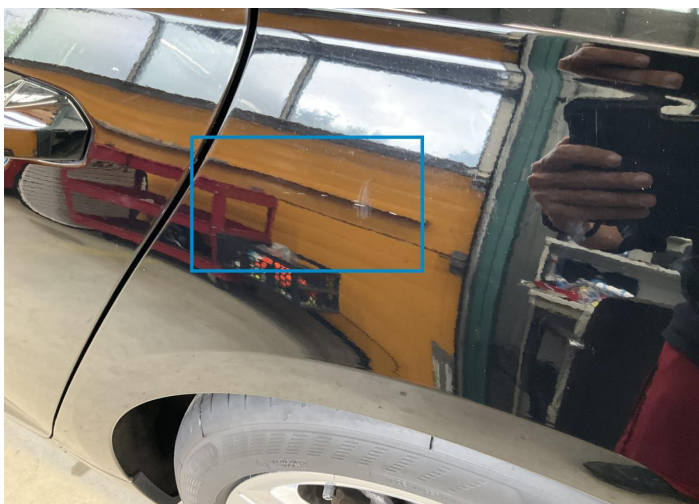
2. Rim / Front Left
Out of Bodywork / Scratch -



3. Fender / Front Left
Paint / Scratch / Scuff -



4. Roof
Paint / Scratch / Scuff -



5. Side Panel / Back Left
Paint / Scratch / Scuff -



6. Bumper / Back
Bodywork / Dent / Dent -



7. Rim / Back Right
Out of Bodywork / Scratch -



8. Pillar / Back Right
Paint / Scratch / Scuff -



9. Rim / Front Right
Out of Bodywork / Scratch -



10. Fender / Front Right
Paint / Stone Chip -

Mechanical Condition

Control Lights

Display Defect	✓	Service Light	✓
ABS Warning Light	✓	ESP Fault/Traction Control Malfunction Light	✓
Diesel Particulate Filter Light	✓	Airbag Warning Light	✓
Oil Pressure Warning Light	✓	Brake Warning Light	✓
Power Steering Warning Light	✓	Alternator / Battery	✓
No Dashboard Lights	✓	Tire Pressure Monitoring System	✓

Equipments Test

Central Locking	✓	Main & Spare Keys Functioning	✓
Electric Windows	✓	Navigation System	✓
Audio Equipment	✓	Parking Sensors / Cameras Functioning	✓
AC / Heating System	✓	Other Equipments	✓

Engine

Engine Status / EML	✓	Engine Leak Visible	✓
Engine Starts	✓		

Gearbox

Gear Box	✓
----------	---

Levels

Brakes Fluid	✓	Coolant Fluid	✓
--------------	---	---------------	---

Test Drive Inspection

Steering Wheel

Steering | Noise / Anomaly

Engine

Engine Noise The Gears Scratch / Skip / Abnormal Operation

Fume Quantity Power Loss

Brake

Brake System Anomaly

General

Test Driven Status

- No troubles detected, good condition or correct tests, according to vehicle age and mileage
- Damages or malfunction detected that requires repairs by the buyer
- Not applicable
- Not tested

Disclaimer

Please also note the "UserGuide condition report", which shows the scope of the vehicle description. [User Guide](#)