



AUDI Q8

Q8 55 TFSle quattro tiptronic

VIN NO WAUZZZF15ND031436
Registration Number 15ND031436



MOT Date	Number of Owners	Number of Keys	Odometer Reading
2025-08-01	1	2	95926 km
Last Service	Last Service Mileage	First Registration Date	Country First Registered
2025-05-16	90579	2022-08-08	Germany

Inspection Report Summary

Customer	BCA Online	Report Number	P20250903095203
Inspection Date / Place	2025-09-03 / BCA Neuss	Cosmetic Grade	4

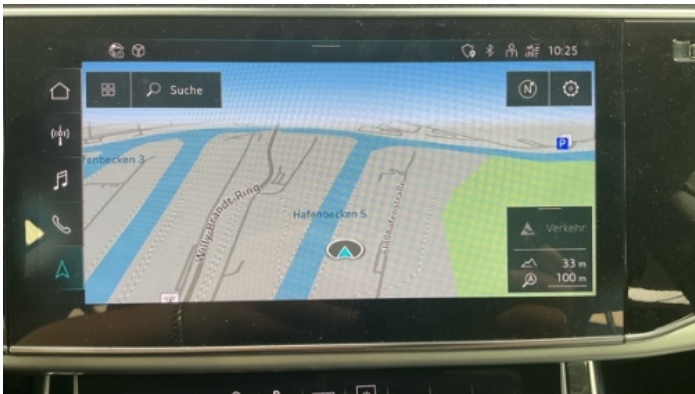
Vehicle Summary

Vehicle Condition	Runner	VAT Type	Qualifying
Fuel Type	Plug - in Hybrid Electric Vehicle Petrol	Road Worthy	Yes
Colour	Black	Engine Size (cc)	2995
Engine Size	3.0	No of Doors	5
Body Type	SUV	Drive Train	All-Wheel-Drive permanent
Seat Colour		No of Seats	5
Seat Covering Name	Schwarz	Seat Covering	Leather
Charging Cables	OUC + Type 2	NEDC CO2 Rating (q/km)	55
Gearbox Type	Automatic		

Vehicle History & Documents

Service Book Available	Present	Next Service Mileage	km
Previous Usage		Imported	No
Manufacturer Warrenty			









Equipment

Tinted Glass	Alloys wheels	Anti-lock braking	Cruise control
Digitaldashboard	Heated wing mirrors	Remote central locking	Satellite navigation
Electrically adjustable seats	Electrictailgate	LED Headlamps	Rear parking sensors
Airbag Status	Ambientlighting	Bluetooth telephone interface	Digital Radio
Front parking sensors	Remote adjusting wing mirrors	Reversing Camera	Stability control
Electrically folding wing mirrors	Leather steering wheel	Radio	

Equipment Details

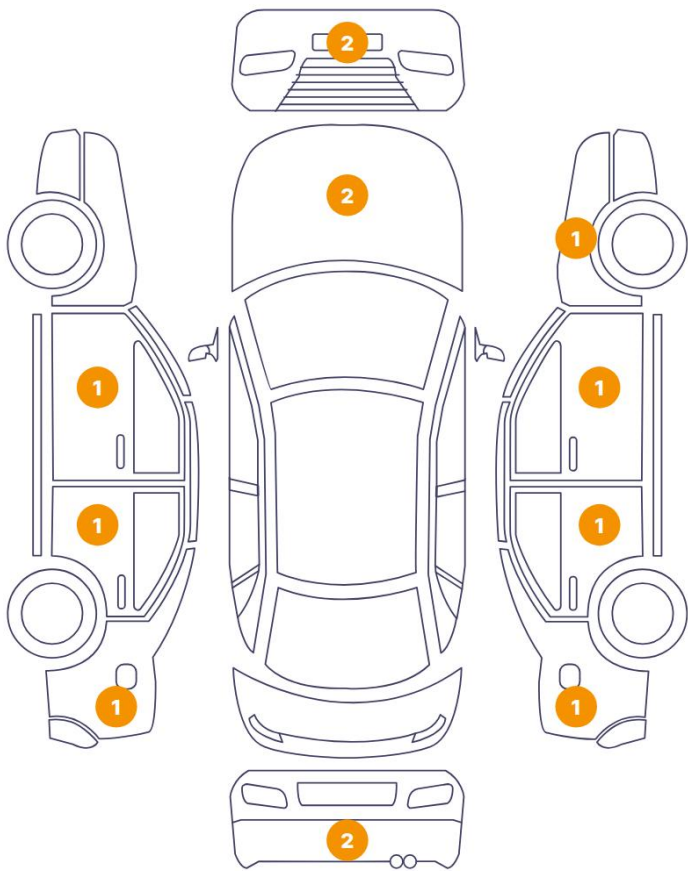
Air Conditioning	Dual Zone Climate Control	Alloy Wheel Size	19
Enhanced Speaker System	Bang & Olufsen	Seat Heating	Front

Wheels & Tyres

Right Front Tyre Depth	5	Left Front Tyre Depth	5
Right Rear Tyre Depth	5	Left Rear Tyre Depth	5

Cosmetic Damage

13 Schäden



0 Schäden



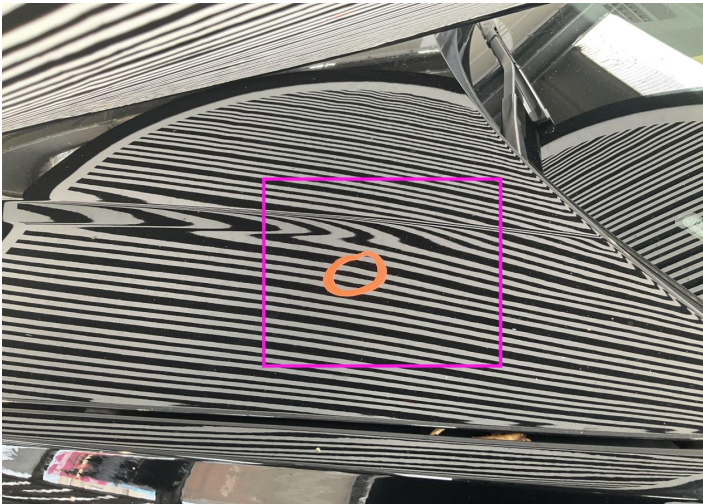
Component		Damage	Comments
1	Hood	Paint / Stone Chip	
2	Hood	Bodywork / Dent / Dent	
3	Bumper / Front	Paint / Scratch / Scuff	
4	Bumper / Front	Paint / Scratch / Scuff	
5	Door / Front Left	Paint / Scratch / Scuff	
6	Door / Back Left	Paint / Scratch / Scuff	
7	Side Panel / Back Left	Paint / Scratch / Scuff	
8	Bumper / Back	Paint / Scratch / Scuff	
9	Bumper / Back	Paint / Scratch / Scuff	
10	Side Panel / Back Right	Paint / Scratch / Scuff	
11	Door / Back Right	Paint / Scratch / Scuff	
12	Door / Front Right	Paint / Stone Chip	

13 Fender / Front Right

Bodywork / Dent / Dent



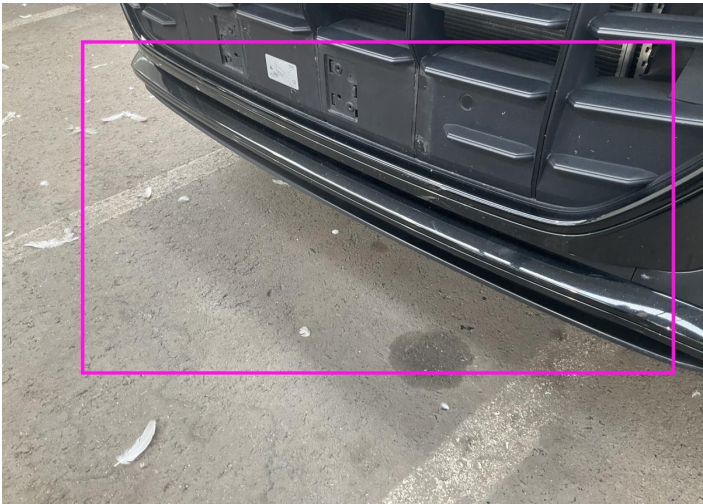
1. Hood
Paint / Stone Chip -



2. Hood
Bodywork / Dent / Dent -



3. Bumper / Front
Paint / Scratch / Scuff -



4. Bumper / Front
Paint / Scratch / Scuff -



5. Door / Front Left
Paint / Scratch / Scuff -



6. Door / Back Left
Paint / Scratch / Scuff -



7. Side Panel / Back Left
Paint / Scratch / Scuff -



8. Bumper / Back
Paint / Scratch / Scuff -



9. Bumper / Back
Paint / Scratch / Scuff -



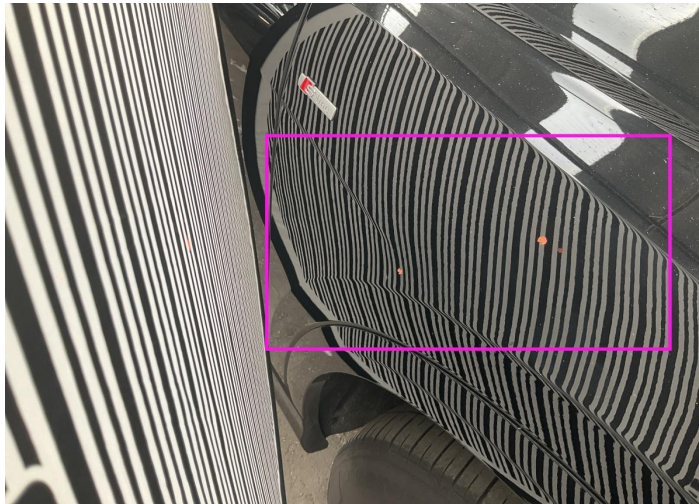
10. Side Panel / Back Right
Paint / Scratch / Scuff -



11. Door / Back Right
Paint / Scratch / Scuff -



12. Door / Front Right
Paint / Stone Chip -



13. Fender / Front Right
Bodywork / Dent / Dent -

Mechanical Condition

Control Lights

Display Defect	✓	Service Light	✓
ABS Warning Light	✓	ESP Fault/Traction Control Malfunction Light	✓
Airbag Warning Light	✓	Oil Pressure Warning Light	✓
Brake Warning Light	✓	Power Steering Warning Light	✓
Alternator / Battery	✓	All - wheel Drive	✓
No Dashboard Lights	✓	Tire Pressure Monitoring System	✓

Equipments Test

Central Locking	✓	Main & Spare Keys Functioning	✓
Electric Windows	✓	Navigation System	✓
Audio Equipment	✓	Parking Sensors / Cameras Functioning	✓
AC / Heating System	✓	Other Equipments	✓

Engine

Engine Status / EML	✓	Engine Leak Visible	✓
Engine Starts	✓		

Gearbox

Gear Box	✓
----------	---

Hybrid/EV

Charge Lead Condition	✓	Charge Port Condition	✓
Hybrid System Fault	✓		

Levels

Coolant Fluid	✓	Brakes Fluid	NA
---------------	---	--------------	----

Test Drive Inspection

Steering Wheel			
Steering Noise / Anomaly		✓	
Engine			
Engine Noise	✓	The Gears Scratch / Skip / Abnormal Operation	✓
Fume Quantity	✓	Power Loss	✓
Brake			
Brake System Anomaly		✓	
General			
Test Driven Status		✓	
✓ <i>No troubles detected, good condition or correct tests, according to vehicle age and mileage</i>			
! <i>Damages or malfunction detected that requires repairs by the buyer</i>			
NA <i>Not applicable</i>			
= <i>Not tested</i>			

Disclaimer

Please also note the "UserGuide condition report", which shows the scope of the vehicle description.

[User Guide](#)