



AUDI A2

A2 1.4

VIN NO WAUZZZ8ZZ1N020572

Registration Number ZZ1N020572



MOT Date

2025-11-01

Last Service



Number of Owners

3

Last Service Mileage



Number of Keys

2

First Registration Date

2000-11-03

Odometer Reading

223540 km

Country First Registered

Germany

Inspection Report Summary

Customer	BCA Online	Report Number	P20250513102206
Inspection Date / Place	2025-05-13 / BCA Oberndorf	Cosmetic Grade	5

Vehicle Summary

Vehicle Condition	Runner	VAT Type	Margin
Fuel Type	Petrol	Road Worthy	Unknown
Colour	Black	Engine Size (cc)	1390
Engine Size	1.4	No of Doors	5
Body Type	Sedan	Drive Train	Front
Seat Colour		No of Seats	4
Seat Covering Name		Seat Covering	Cloth
Charging Cables		NEDC CO2 Rating (q/km)	142
Gearbox Type	Manual		

Vehicle History & Documents

Service Book Available	Present	Next Service Mileage	km
Previous Usage		Imported	No
Manufacturer Warrenty			







Equipment

Airbag Status	Remote adjusting wing mirrors	Leather steering wheel	Anti-lock braking
Remote central locking	Radio		

Equipment Details

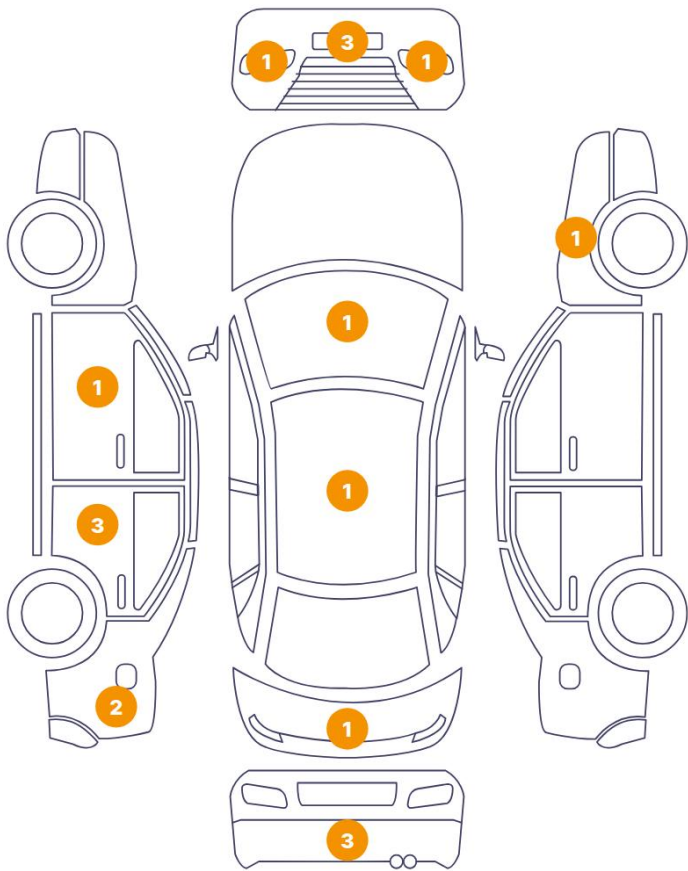
Air Conditioning	Climate Control
------------------	-----------------

Wheels & Tyres

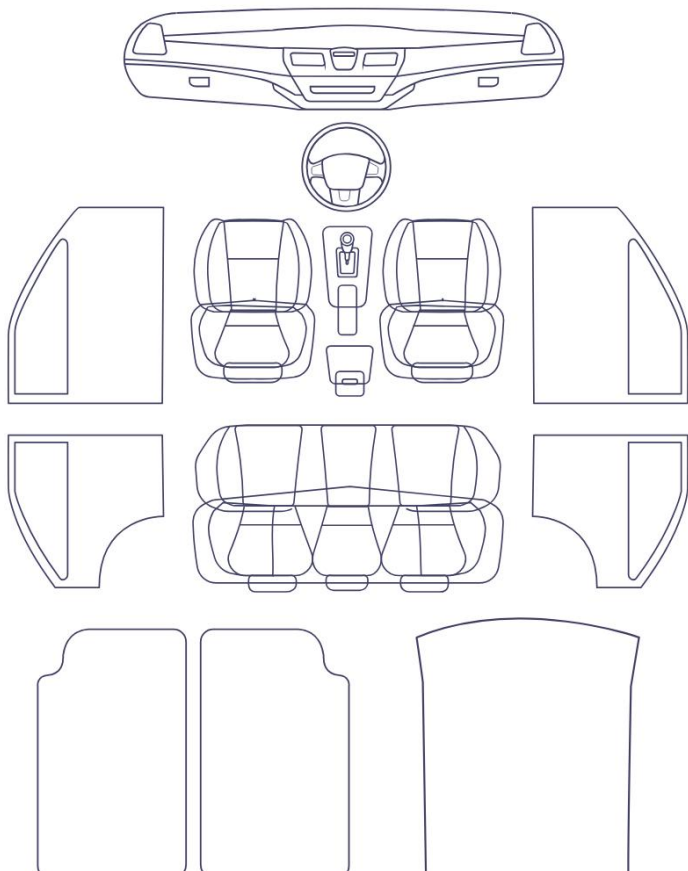
Right Front Tyre Depth	2	Left Front Tyre Depth	2
Right Rear Tyre Depth	3	Left Rear Tyre Depth	3

Cosmetic Damage

18 Schäden

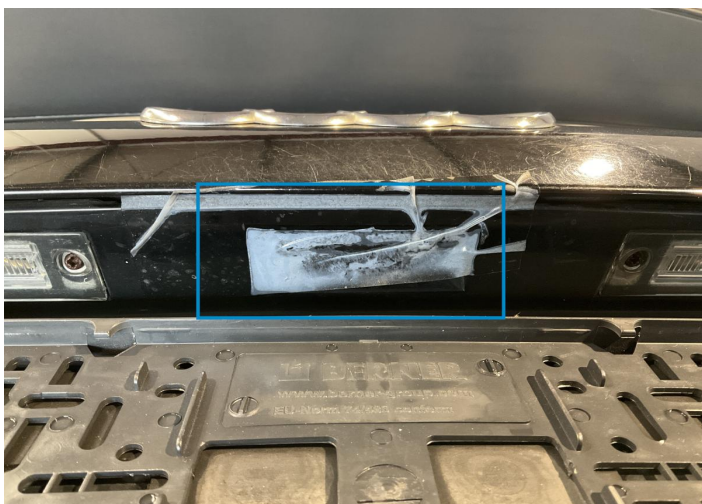


1 Schäden

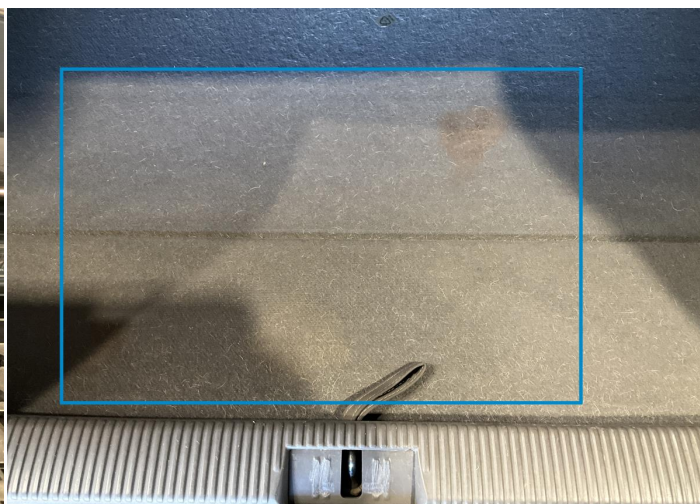


Component		Damage	Comments
1	Trunk Tailgate Handle / Back	Bodywork / Breakage / Crack	
2	Trunk Carpet	Interior / Dirty	
3	Bumper / Back	Bodywork / Breakage / Hole	
4	Door / Back Left	Paint / Poor Previous Repair	
5	Door / Back Left	Paint / Scratch / Scuff	
6	Side Panel / Back Left	Paint / Scratch / Scuff	
7	Door / Front Left	Paint / Scratch / Scuff	
8	Front Light / Front Left	Anomalyon Element	
9	Front Light / Front Right	Anomalyon Element	
10	Roof	Bodywork / Dent / Dent	
11	Bumper / Front	Bodywork / Breakage / Hole	
12	Bumper / Front	Paint / Scratch / Scuff	
13	Bumper / Front	Paint / Scratch / Scuff	

14	Door / Back Left	Bodywork / Dent / Dent
15	Windshield / Front	Bodywork / Breakage / Crack
16	Fender / Front Right	Paint / Scratch / Scuff
17	Bumper / Back	Paint / Scratch / Scuff
18	Bumper / Back	Paint / Scratch / Scuff
19	Wing Stick / Back Left	Paint / Scratch / Scuff



1. Trunk Tailgate Handle / Back
Bodywork / Breakage / Crack -



2. Trunk Carpet
Interior / Dirty -



3. Bumper / Back
Bodywork / Breakage / Hole -



4. Door / Back Left
Paint / Poor Previous Repair -



5. Door / Back Left
Paint / Scratch / Scuff -



6. Side Panel / Back Left
Paint / Scratch / Scuff -



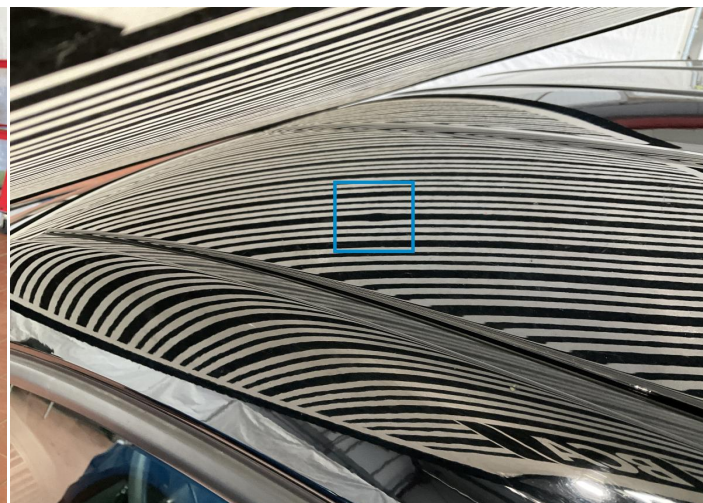
7. Door / Front Left
Paint / Scratch / Scuff -



8. Front Light / Front Left
Anomaly Element -



9. Front Light / Front Right
Anomaly Element -



10. Roof
Bodywork / Dent / Dent -



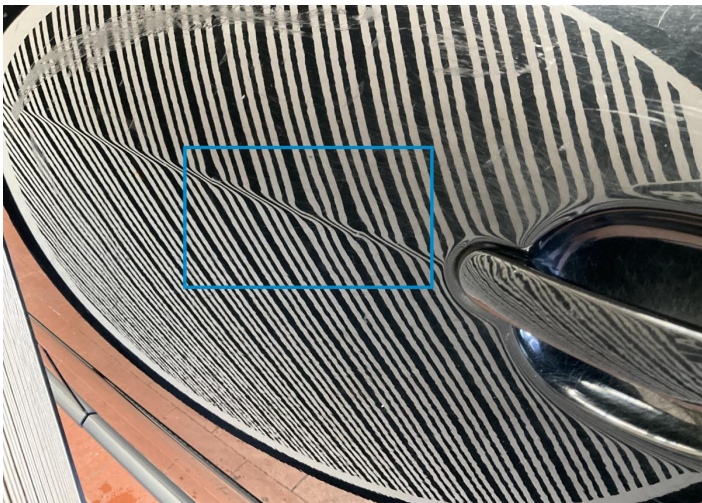
11. Bumper / Front
Bodywork / Breakage / Hole -



12. Bumper / Front
Paint / Scratch / Scuff -



13. Bumper / Front
Paint / Scratch / Scuff -



14. Door / Back Left
Bodywork / Dent / Dent -



15. Windshield / Front
Bodywork / Breakage / Crack -



16. Fender / Front Right
Paint / Scratch / Scuff -



17. Bumper / Back
Paint / Scratch / Scuff -



18. Bumper / Back
Paint / Scratch / Scuff -



19. Wing Stick / Back Left
Paint / Scratch / Scuff -

Mechanical Condition

Control Lights			
Display Defect	✓	Service Light	⚠
ABS Warning Light	✓	Airbag Warning Light	✓
Oil Pressure Warning Light	✓	Brake Warning Light	✓
Power Steering Warning Light	✓	Alternator / Battery	✓
No Dashboard Lights	✓		
Equipments Test			
Central Locking	✓	Electric Windows	✓
Audio Equipment	✓	AC / Heating System	✓
Engine			
Engine Status / EML	⚠	Engine Leak Visible	✓
Engine Starts	✓		
Levels			
Brakes Fluid	✓	Coolant Fluid	✓

Test Drive Inspection

Steering Wheel			
Steering Noise / Anomaly		✓	
Engine			
Engine Noise	!	Fume Quantity	✓
Power Loss	✓		
Clutch			
Clutch Functioning	✓		
General			
Test Driven Status	Not Performed		
✓	No troubles detected, good condition or correct tests, according to vehicle age and mileage		
!	Damages or malfunction detected that requires repairs by the buyer		
NA	Not applicable		
☐	Not tested		

Disclaimer

Please also note the "UserGuide condition report", which shows the scope of the vehicle description.

[User Guide](#)