



AUDI A1

A1 1.0 TFSI ultra Sportback S tronic

VIN NO WAUZZZ8X8JB027081
Registration Number X8JB027081



MOT Date

2027-04-01

Last Service



Number of Owners

1

Last Service Mileage



Number of Keys

2

First Registration Date

2017-10-12

Odometer Reading

220418 km

Country First Registered

Germany

Inspection Report Summary

Customer	BCA Online	Report Number	P20250829102254
Inspection Date / Place	2025-08-29 / BCA Oberndorf	Cosmetic Grade	4

Vehicle Summary

Vehicle Condition	Runner	VAT Type	Qualifying
Fuel Type	Petrol	Road Worthy	Yes
Colour	White	Engine Size (cc)	999
Engine Size	1.0	No of Doors	5
Body Type	Sedan	Drive Train	Front
Seat Colour		No of Seats	4
Seat Covering Name	Schwarz	Seat Covering	Cloth
Charging Cables		NEDC CO2 Rating (q/km)	102
Gearbox Type	Automatic		

Vehicle History & Documents

Service Book Available	Missing	Next Service Mileage	km
Previous Usage		Imported	No
Manufacturer Warrenty			







Equipment

Airbag Status	Anti-lock braking	Front fog lamps	Remote central locking
Split folding rear seats	Xenon headlamps	Central locking	Radio
Alloys wheels	Bluetooth telephone interface	Remote adjusting wing mirrors	Satellite navigation
Stability control	CD Player	Leather steering wheel	Rear parking sensors

Equipment Details

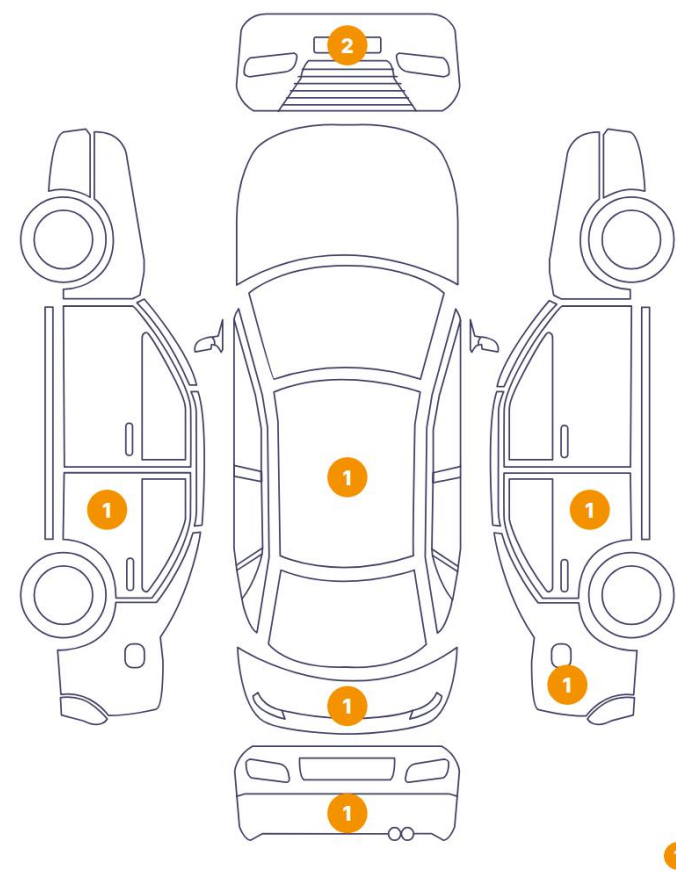
Air Conditioning	Climate Control	Alloy Wheel Size	17
Seat Heating	Front		

Wheels & Tyres

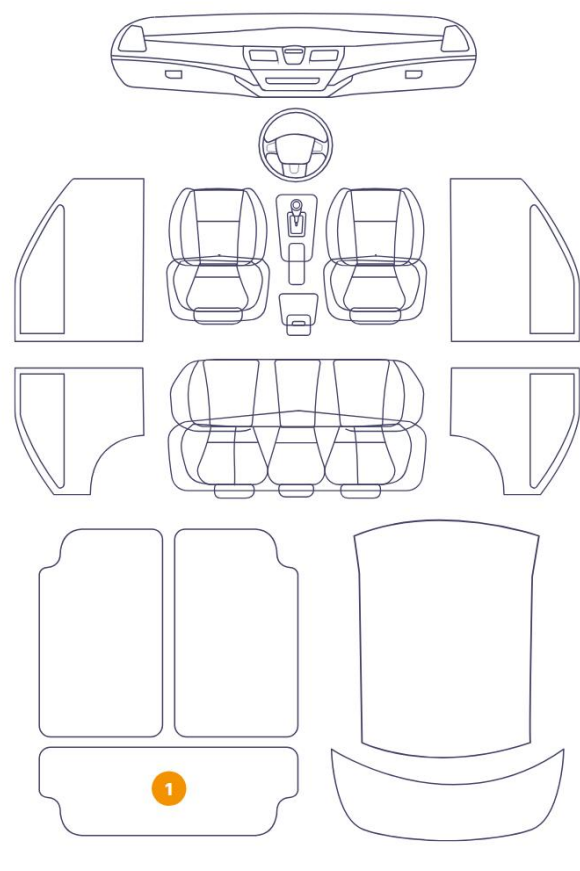
Right Front Tyre Depth	6	Left Front Tyre Depth	6
Right Rear Tyre Depth	6	Left Rear Tyre Depth	6

Cosmetic Damage

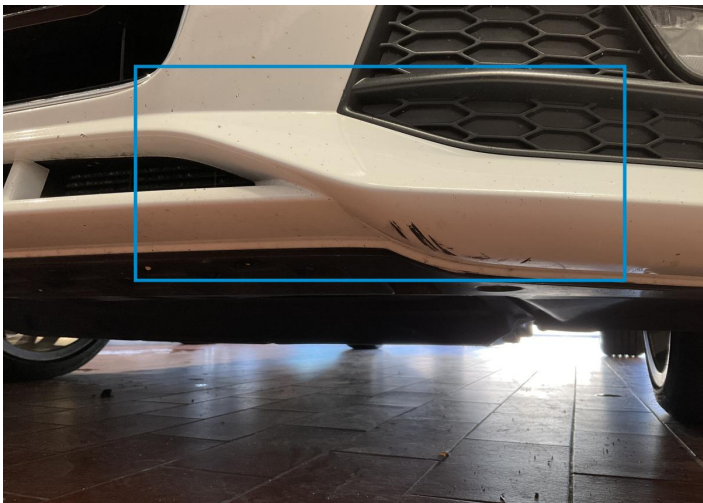
9 Schäden



1 Schäden



Component		Damage	Comments
1	Bumper / Front	Paint / Scratch / Scuff	
2	Roof	Paint / Stone Chip	
3	Bumper / Front	Bodywork / Dent / Dent	
4	Door / Back Left	Paint / Scratch / Scuff	
5	Tailgate	Paint / Scratch / Line	
6	Luggage Space Cover / Back	Interior / Ripped	
7	Bumper / Back	Paint / Scratch / Line	
8	Fender / Back Right	Bodywork / Dent / Dent	
9	Door / Back Right	Bodywork / Dent / Dent	
10	Other	Paint / Scratch / Scuff	



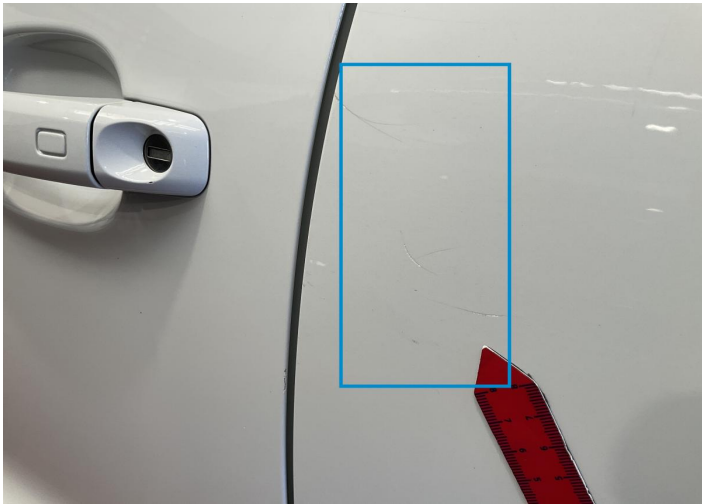
1. Bumper / Front
Paint / Scratch / Scuff -



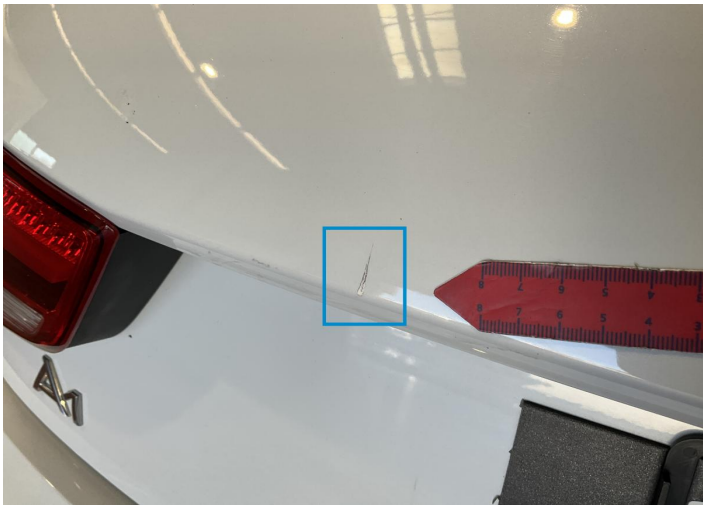
2. Roof
Paint / Stone Chip -



3. Bumper / Front
Bodywork / Dent / Dent -



4. Door / Back Left
Paint / Scratch / Scuff -



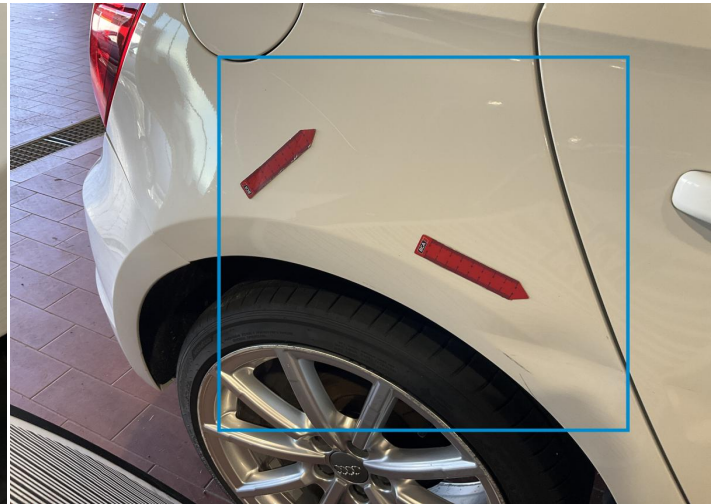
5. Tailgate
Paint / Scratch / Line -



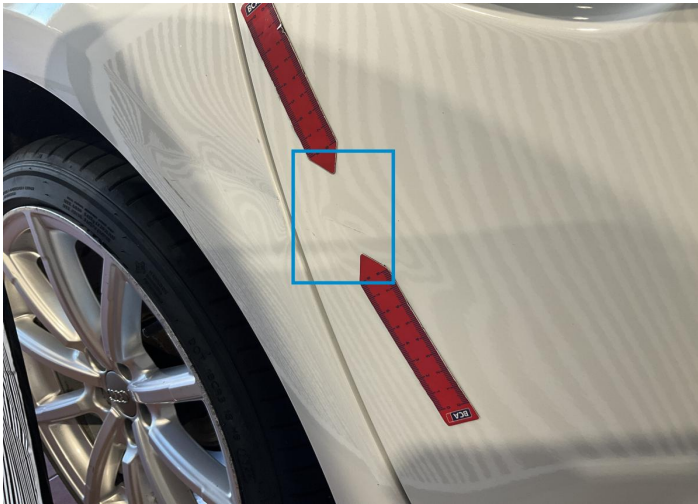
6. Luggage Space Cover / Back
Interior / Ripped -



7. Bumper / Back
Paint / Scratch / Line -



8. Fender / Back Right
Bodywork / Dent / Dent -



9. Door / Back Right
Bodywork / Dent / Dent -



10.
Paint / Scratch / Scuff -

Mechanical Condition

Control Lights

Display Defect	✓	Service Light	✓
ABS Warning Light	✓	ESP Fault/Traction Control Malfunction Light	✓
Airbag Warning Light	✓	Oil Pressure Warning Light	✓
Brake Warning Light	✓	Power Steering Warning Light	✓
Alternator / Battery	✓	No Dashboard Lights	✓

Equipments Test

Central Locking	✓	Main & Spare Keys Functioning	✓
Electric Windows	✓	Navigation System	✓
Audio Equipment	✓	Parking Sensors / Cameras Functioning	✓
AC / Heating System	✓	Other Equipments	✓

Engine

Engine Status / EML	✓	Engine Leak Visible	!
Engine Starts	✓		

Gearbox

Gear Box	✓
----------	---

Levels

Brakes Fluid	✓	Coolant Fluid	✓
--------------	---	---------------	---

Test Drive Inspection

Steering Wheel			
Steering Noise / Anomaly		✔	
Engine			
Engine Noise	✔	The Gears Scratch / Skip / Abnormal Operation	✔
Fume Quantity	✔	Power Loss	✔
Brake			
Brake System Anomaly		✔	
General			
Test Driven Status		Not Performed	
✔ <i>No troubles detected, good condition or correct tests, according to vehicle age and mileage</i>			
❗ <i>Damages or malfunction detected that requires repairs by the buyer</i>			
NA <i>Not applicable</i>			
= <i>Not tested</i>			

Disclaimer

Please also note the "UserGuide condition report", which shows the scope of the vehicle description.

[User Guide](#)