



# AUDI A1

## A1 1.0 TFSI ultra Sportback S tronic

VIN NO WAUZZZ8X8JB027081  
Registration Number X8JB027081



MOT Date

2027-04-01

Last Service



Number of Owners

1

Last Service Mileage



Number of Keys

2

First Registration Date

2017-10-12

Odometer Reading

220418 km

Country First Registered

Germany

### Inspection Report Summary

|                         |                            |                |                 |
|-------------------------|----------------------------|----------------|-----------------|
| Customer                | BCA Online                 | Report Number  | P20250829102254 |
| Inspection Date / Place | 2025-08-29 / BCA Oberndorf | Cosmetic Grade | 4               |

### Vehicle Summary

|                    |           |                        |            |
|--------------------|-----------|------------------------|------------|
| Vehicle Condition  | Runner    | VAT Type               | Qualifying |
| Fuel Type          | Petrol    | Road Worthy            | Yes        |
| Colour             | White     | Engine Size (cc)       | 999        |
| Engine Size        | 1.0       | No of Doors            | 5          |
| Body Type          | Sedan     | Drive Train            | Front      |
| Seat Colour        |           | No of Seats            | 4          |
| Seat Covering Name | Schwarz   | Seat Covering          | Cloth      |
| Charging Cables    |           | NEDC CO2 Rating (q/km) | 102        |
| Gearbox Type       | Automatic |                        |            |

### Vehicle History & Documents

|                        |         |                      |    |
|------------------------|---------|----------------------|----|
| Service Book Available | Missing | Next Service Mileage | km |
| Previous Usage         |         | Imported             | No |
| Manufacturer Warrenty  |         |                      |    |











Equipment

|                          |                               |                               |                        |
|--------------------------|-------------------------------|-------------------------------|------------------------|
| Airbag Status            | Anti-lock braking             | Front fog lamps               | Remote central locking |
| Split folding rear seats | Xenon headlamps               | Central locking               | Radio                  |
| Alloys wheels            | Bluetooth telephone interface | Remote adjusting wing mirrors | Satellite navigation   |
| Stability control        | CD Player                     | Leather steering wheel        | Rear parking sensors   |

Equipment Details

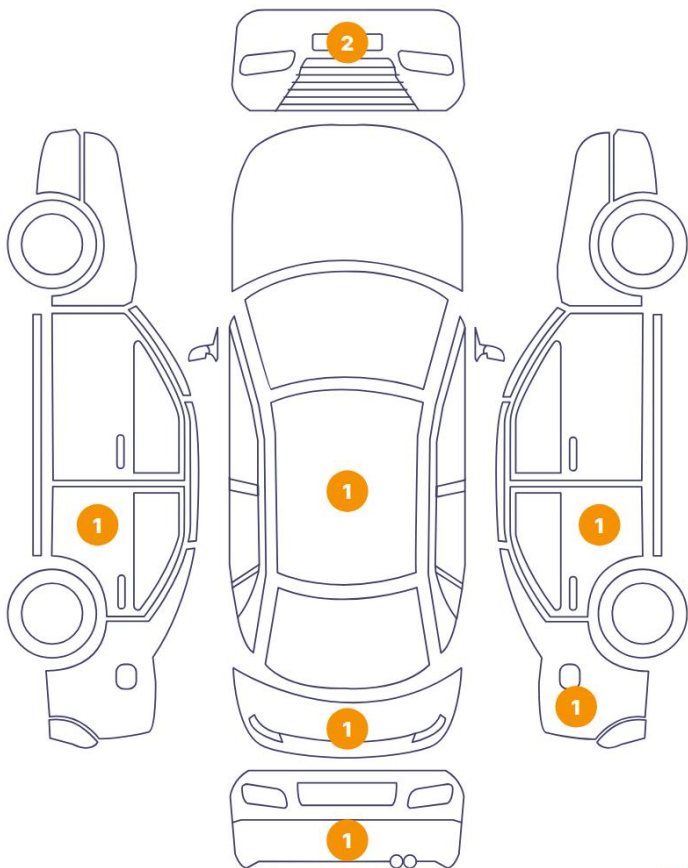
|                  |                 |                  |    |
|------------------|-----------------|------------------|----|
| Air Conditioning | Climate Control | Alloy Wheel Size | 17 |
| Seat Heating     | Front           |                  |    |

Wheels & Tyres

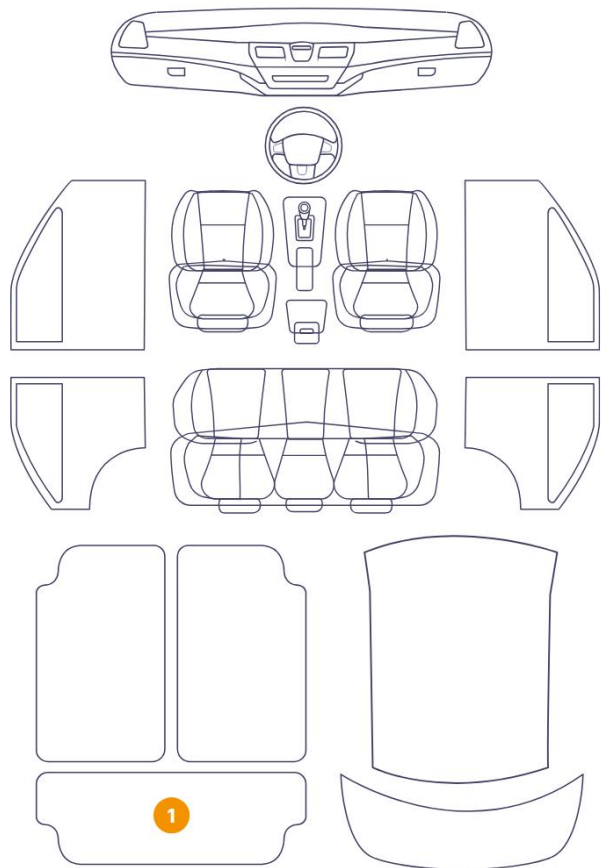
|                        |   |                       |   |
|------------------------|---|-----------------------|---|
| Right Front Tyre Depth | 6 | Left Front Tyre Depth | 6 |
| Right Rear Tyre Depth  | 6 | Left Rear Tyre Depth  | 6 |

Cosmetic Damage

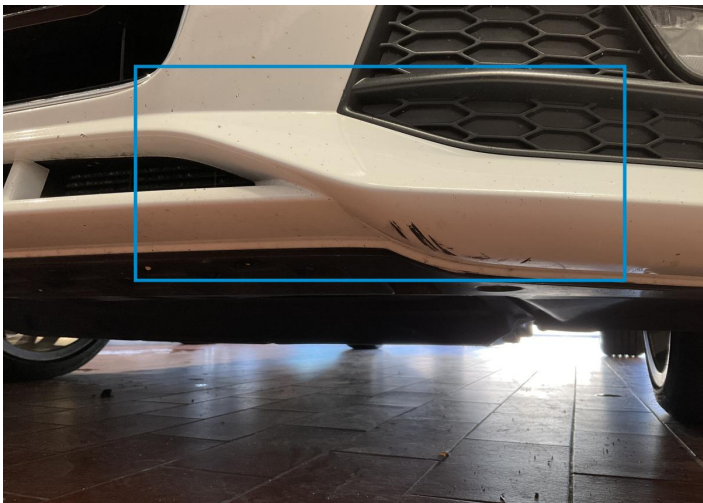
9 Schäden



1 Schäden



| Component |                            | Damage                  | Comments |
|-----------|----------------------------|-------------------------|----------|
| 1         | Bumper / Front             | Paint / Scratch / Scuff |          |
| 2         | Roof                       | Paint / Stone Chip      |          |
| 3         | Bumper / Front             | Bodywork / Dent / Dent  |          |
| 4         | Door / Back Left           | Paint / Scratch / Scuff |          |
| 5         | Tailgate                   | Paint / Scratch / Line  |          |
| 6         | Luggage Space Cover / Back | Interior / Ripped       |          |
| 7         | Bumper / Back              | Paint / Scratch / Line  |          |
| 8         | Fender / Back Right        | Bodywork / Dent / Dent  |          |
| 9         | Door / Back Right          | Bodywork / Dent / Dent  |          |
| 10        | Other                      | Paint / Scratch / Scuff |          |



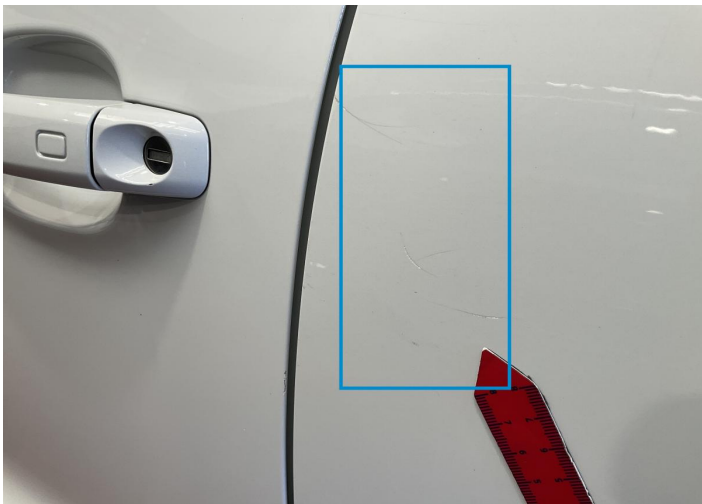
1. Bumper / Front  
Paint / Scratch / Scuff -



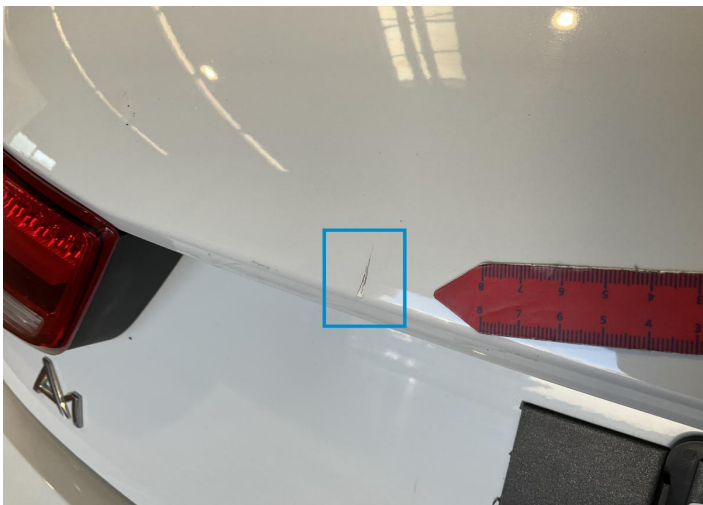
2. Roof  
Paint / Stone Chip -



3. Bumper / Front  
Bodywork / Dent / Dent -



4. Door / Back Left  
Paint / Scratch / Scuff -



5. Tailgate  
Paint / Scratch / Line -

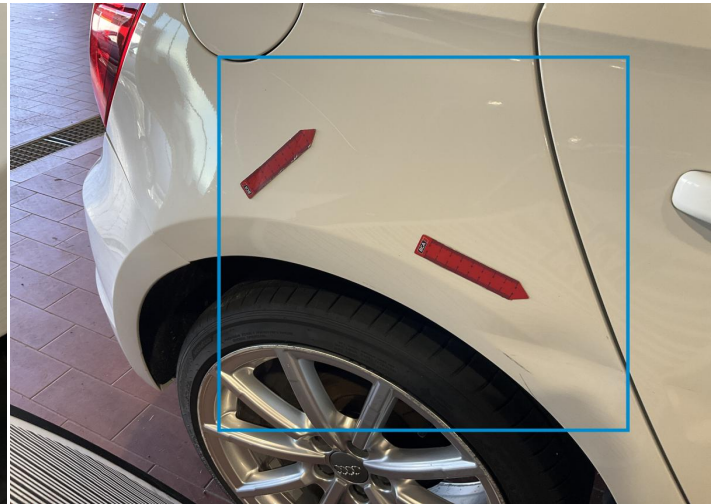


6. Luggage Space Cover / Back  
Interior / Ripped -

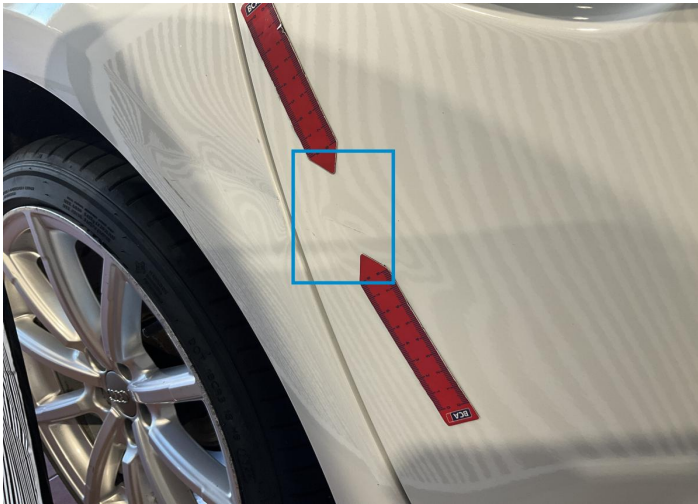




7. Bumper / Back  
Paint / Scratch / Line -



8. Fender / Back Right  
Bodywork / Dent / Dent -



9. Door / Back Right  
Bodywork / Dent / Dent -



10.  
Paint / Scratch / Scuff -



## Mechanical Condition

### Control Lights

|                      |   |  |   |
|----------------------|---|--|---|
| Display Defect       | ✓ | Service Light                                | ✓ |
| ABS Warning Light    | ✓ | ESP Fault/Traction Control Malfunction Light | ✓ |
| Airbag Warning Light | ✓ | Oil Pressure Warning Light                   | ✓ |
| Brake Warning Light  | ✓ | Power Steering Warning Light                 | ✓ |
| Alternator / Battery | ✓ | No Dashboard Lights                          | ✓ |

### Equipments Test

|                     |   |                                       |   |
|---------------------|---|---------------------------------------|---|
| Central Locking     | ✓ | Main & Spare Keys Functioning         | ✓ |
| Electric Windows    | ✓ | Navigation System                     | ✓ |
| Audio Equipment     | ✓ | Parking Sensors / Cameras Functioning | ✓ |
| AC / Heating System | ✓ | Other Equipments                      | ✓ |

### Engine

|                     |   |                     |   |
|---------------------|---|---------------------|---|
| Engine Status / EML | ✓ | Engine Leak Visible | ! |
| Engine Starts       | ✓ |                     |   |

### Gearbox

|          |   |
|----------|---|
| Gear Box | ✓ |
|----------|---|

### Levels

|              |   |               |   |
|--------------|---|---------------|---|
| Brakes Fluid | ✓ | Coolant Fluid | ✓ |
|--------------|---|---------------|---|

Test Drive Inspection

| Steering Wheel   |   |   |   |
|--|---|---|---|
| Steering   Noise / Anomaly   |   | ✔   |   |
| Engine   |   |   |   |
| Engine Noise   | ✔ | The Gears Scratch / Skip / Abnormal Operation | ✔ |
| Fume Quantity  | ✔ | Power Loss                                    | ✔ |
| Brake  |   |   |   |
| Brake System Anomaly   |   | ✔   |   |
| General  |   |   |   |
| Test Driven Status   |   | Not Performed                                 |   |
| ✔ <i>No troubles detected, good condition or correct tests, according to vehicle age and mileage</i> |   |   |   |
| ❗ <i>Damages or malfunction detected that requires repairs by the buyer</i>                          |   |   |   |
| NA <i>Not applicable</i>   |   |   |   |
| = <i>Not tested</i>  |   |   |   |

Disclaimer

Please also note the "UserGuide condition report", which shows the scope of the vehicle description.

[User Guide](#)