



AUDI Q3

Q3 2.0 TFSI quattro S tronic

VIN NO WAUZZZ8U1HR085525
Registration Number U1HR085525



MOT Date	Number of Owners	Number of Keys	Odometer Reading
-	3	1	107142 km
Last Service	Last Service Mileage	First Registration Date	Country First Registered
2024-05-24	84194	2017-06-07	-

Inspection Report Summary

Customer	BCA Online	Report Number	P20250828090852
Inspection Date / Place	2025-08-28 / BCA Berlin	Cosmetic Grade	3

Vehicle Summary

Vehicle Condition	Runner	VAT Type	Margin
Fuel Type	Petrol	Road Worthy	Unknown
Colour	Silver	Engine Size (cc)	1984
Engine Size	2.0	No of Doors	5
Body Type	SUV	Drive Train	All-Wheel-Drive permanent
Seat Colour		No of Seats	5
Seat Covering Name		Seat Covering	Cloth
Charging Cables		NEDC CO2 Rating (q/km)	150
Gearbox Type	Automatic		

Vehicle History & Documents

Service Book Available	Incomplete	Next Service Mileage	km
Previous Usage		Imported	No
Manufacturer Warrenty			







Equipment

USB Socket	Alloys wheels	Bluetooth telephone interface	Digital Radio
Headlamp wash/wipe	Remote adjusting wing mirrors	Reversing Camera	Satellite navigation
Electrically folding wing mirrors	Rain sensitive windscreen wipers	Airbag Status	Anti-lock braking
Cruise control	Front parking sensors	Heated wing mirrors	Remote central locking
Roof rails	Stability control	LED Headlamps	Rear parking sensors

Equipment Details

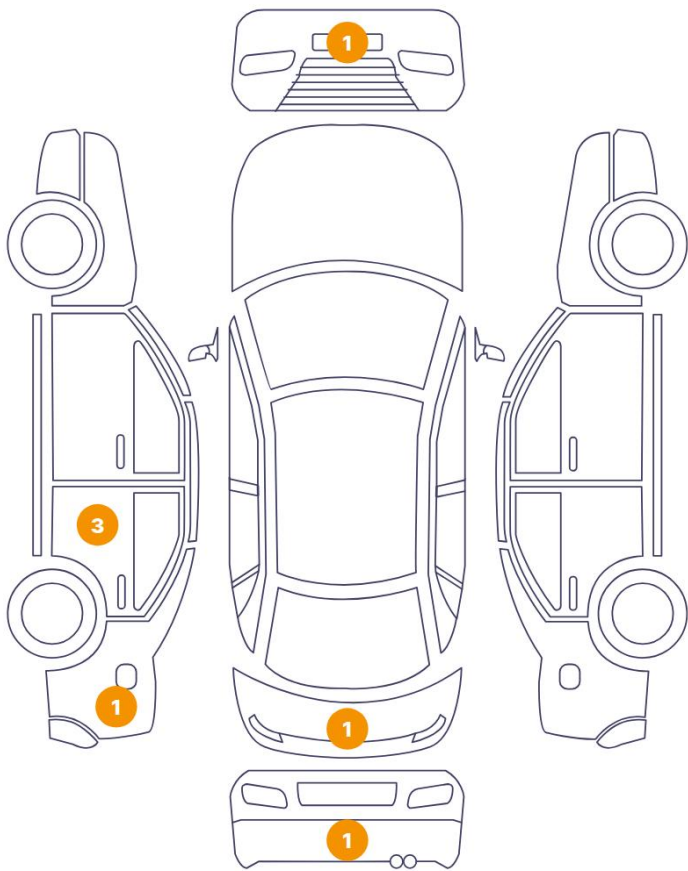
Air Conditioning	Dual Zone Climate Control	Alloy Wheel Size	18
Seat Heating	Front		

Wheels & Tyres

Right Front Tyre Depth	3	Left Front Tyre Depth	3
Right Rear Tyre Depth	5	Left Rear Tyre Depth	5

Cosmetic Damage

7 Schäden



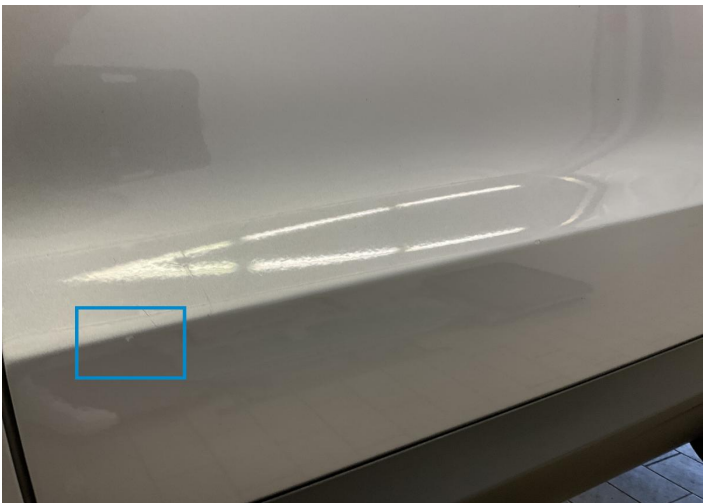
0 Schäden



Component	Damage	Comments
1 Side Panel / Back Left	Paint / Poor Previous Repair	
2 Door / Back Left	Paint / Chipping	
3 Door / Back Left	Paint / Chipping	
4 Door / Back Left	Paint / Scratch / Scuff	
5 Bumper / Back	Paint / Scratch / Scuff	
6 Tailgate light	Paint / Scratch / Scuff	
7 Bumper / Front	Paint / Scratch / Scuff	



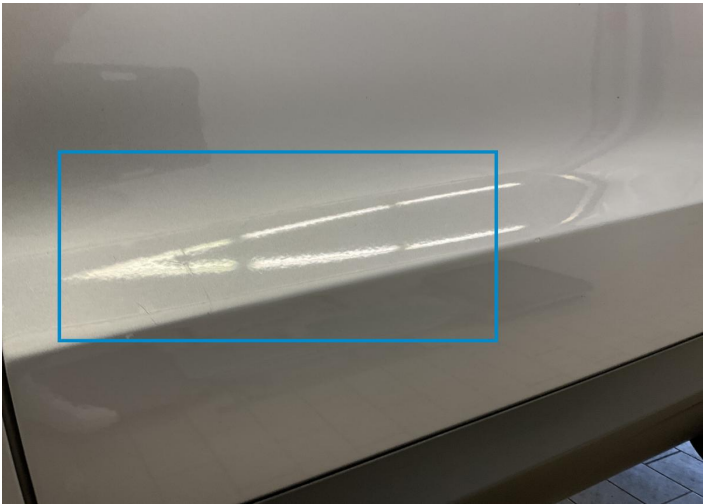
1. Side Panel / Back Left
Paint / Poor Previous Repair -



2. Door / Back Left
Paint / Chipping -



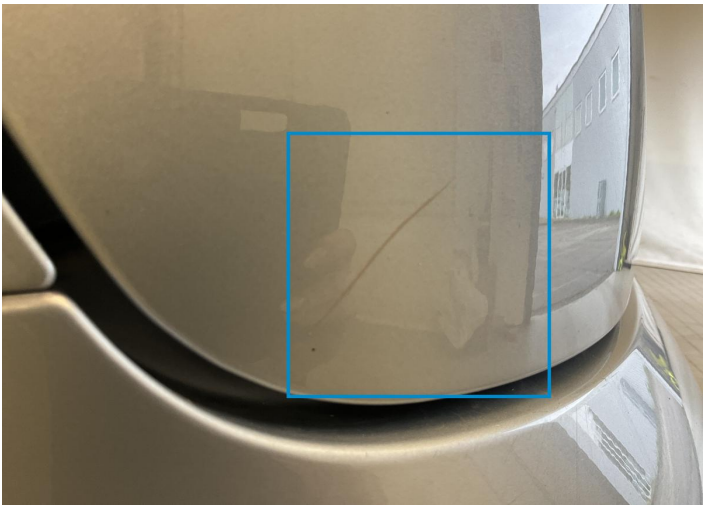
3. Door / Back Left
Paint / Chipping -



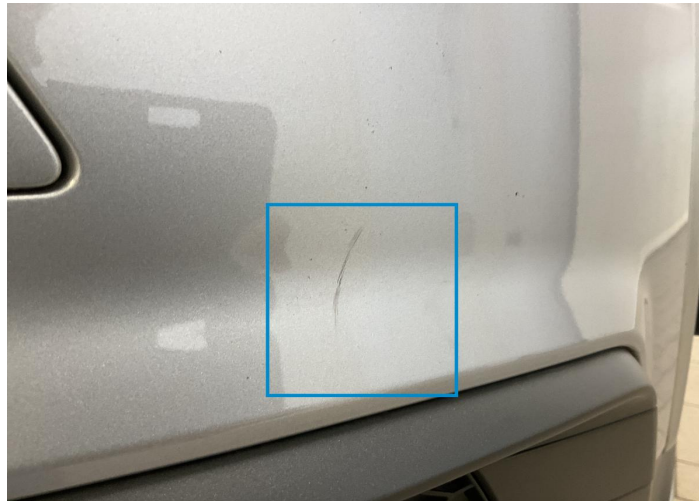
4. Door / Back Left
Paint / Scratch / Scuff -



5. Bumper / Back
Paint / Scratch / Scuff -



6. Tailgate light
Paint / Scratch / Scuff -



7. Bumper / Front
Paint / Scratch / Scuff -

Mechanical Condition

Control Lights

Display Defect	✓	Service Light	!
ABS Warning Light	✓	ESP Fault/Traction Control Malfunction Light	✓
Airbag Warning Light	✓	Oil Pressure Warning Light	✓
Brake Warning Light	✓	Power Steering Warning Light	✓
Alternator / Battery	✓	No Dashboard Lights	✓
Tire Pressure Monitoring System	✓		

Equipments Test

Other Equipments	✓	Electric Windows	✓
Navigation System	✓	Audio Equipment	✓
Parking Sensors / Cameras Functioning	✓	AC / Heating System	✓

Engine

Engine Starts	✓	Engine Status / EML	✓
Engine Leak Visible	✓		

Gearbox

Gear Box	✓
----------	---

Levels

Brakes Fluid	✓	Coolant Fluid	✓
--------------	---	---------------	---

Test Drive Inspection

Steering Wheel

Steering | Noise / Anomaly

Engine

Engine Noise The Gears Scratch / Skip / Abnormal Operation

Fume Quantity Power Loss

Brake

Brake System Anomaly

General

Test Driven Status

- No troubles detected, good condition or correct tests, according to vehicle age and mileage
- Damages or malfunction detected that requires repairs by the buyer
- Not applicable
- Not tested

Disclaimer

Please also note the "UserGuide condition report", which shows the scope of the vehicle description. [User Guide](#)