



AUDI Q5

Q5 2.0 TDI (clean diesel) ultra

VIN NO WAUZZZ8R8HA008788
Registration Number R8HA008788



MOT Date	Number of Owners	Number of Keys	Odometer Reading
2026-08-01	2	2	176497 km
Last Service	Last Service Mileage	First Registration Date	Country First Registered
-	-	2016-06-28	Germany

Inspection Report Summary

Customer	BCA Online	Report Number	P20250626092155
Inspection Date / Place	2025-06-26 / SULOJA Mönchengladbach	Cosmetic Grade	4

Vehicle Summary

Vehicle Condition	Runner	VAT Type	Margin
Fuel Type	Diesel	Road Worthy	Yes
Colour	Black	Engine Size (cc)	1968
Engine Size	2.0	No of Doors	5
Body Type	SUV	Drive Train	Front
Seat Colour		No of Seats	5
Seat Covering Name	Schwarz	Seat Covering	Cloth
Charging Cables		NEDC CO2 Rating (q/km)	129
Gearbox Type	Manual		

Vehicle History & Documents

Service Book Available	-	Next Service Mileage	km
Previous Usage		Imported	No
Manufacturer Warrenty			







Equipment

Tinted Glass	Alloys wheels	Auxiliary Socket	Diesel particulate filter
Front parking sensors	Remote adjusting wing mirrors	Roof rails	CD Player
Electrictailgate	Radio	Rear parking sensors	Airbag Status
Anti-lock braking	Cruise control	Front fog lamps	Heated wing mirrors
Remote central locking	Stability control	Central locking	Leather steering wheel
Rain sensitive windscreen wipers			

Equipment Details

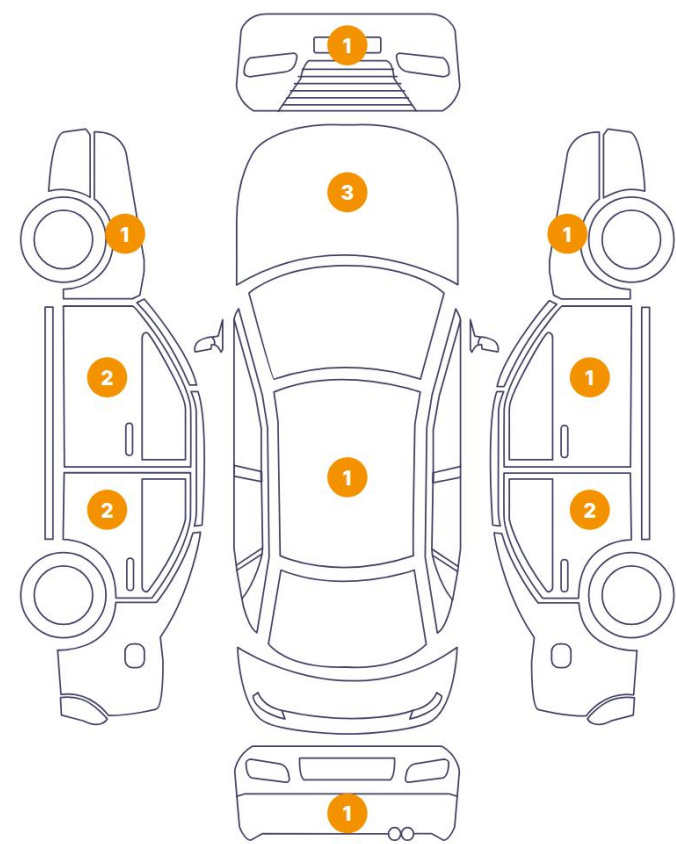
Air Conditioning	Yes	Alloy Wheel Size	17
------------------	-----	------------------	----

Wheels & Tyres

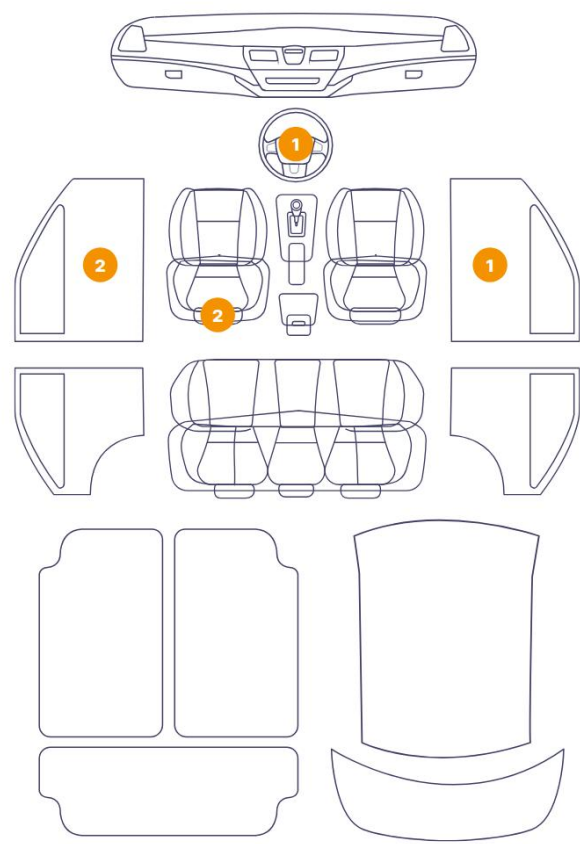
Right Front Tyre Depth	3	Left Front Tyre Depth	3
Right Rear Tyre Depth	3	Left Rear Tyre Depth	3

Cosmetic Damage

15 Schäden



6 Schäden



Component		Damage	Comments
1	Door Step / Front Left	Interior / Scratched	
2	Seat / Front Left	Interior / Worn - out	
3	Seat / Front Left	Interior / Dirty	
4	Steering Wheel / Front	Interior / Scratched	
5	Panel Filling / Front Left	Interior / Scratched	
6	Fender / Front Left	Bodywork / Dent / Dent	
7	Hood	Bodywork / Dent / Dent	
8	Hood	Bodywork / Dent / Dent	
9	Hood	Paint / Stone Chip	
10	Fender / Front Right	Paint / Scratch / Scuff	
11	Door / Front Right	Paint / Scratch / Scuff	
12	Door / Back Right	Bodywork / Dent / Dent	
13	Door / Back Right	Paint / Scratch / Scuff	

14	Bumper / Back	Paint / Scratch / Scuff
15	Door / Back Left	Paint / Scratch / Scuff
16	Pillar / Back Left	Bodywork / Dent / Dent
17	Door / Front Left	Bodywork / Dent / Dent
18	Door / Front Left	Paint / Scratch / Scuff
19	Bumper / Front	Paint / Stone Chip
20	Panel Filling / Front Right	Interior / Scraped
21	Roof	Bodywork / Dent / Dent



1. Door Step / Front Left
Interior / Scratched -



2. Seat / Front Left
Interior / Worn - out -



3. Seat / Front Left
Interior / Dirty -



4. Steering Wheel / Front
Interior / Scratched -



5. Panel Filling / Front Left
Interior / Scratched -



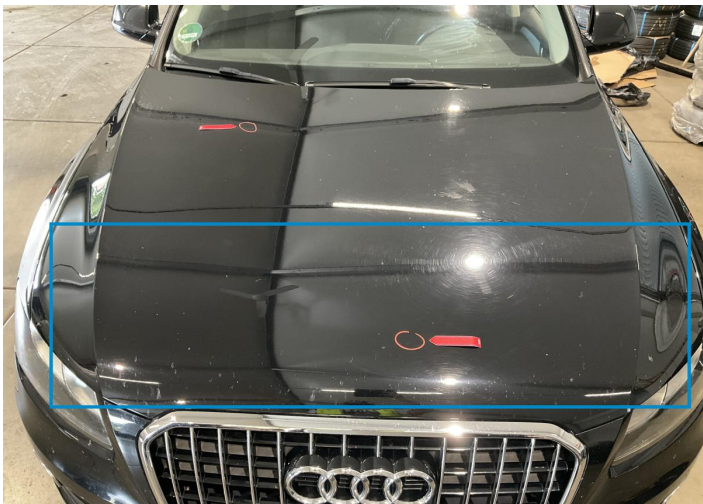
6. Fender / Front Left
Bodywork / Dent / Dent -



7. Hood
Bodywork / Dent / Dent -



8. Hood
Bodywork / Dent / Dent -



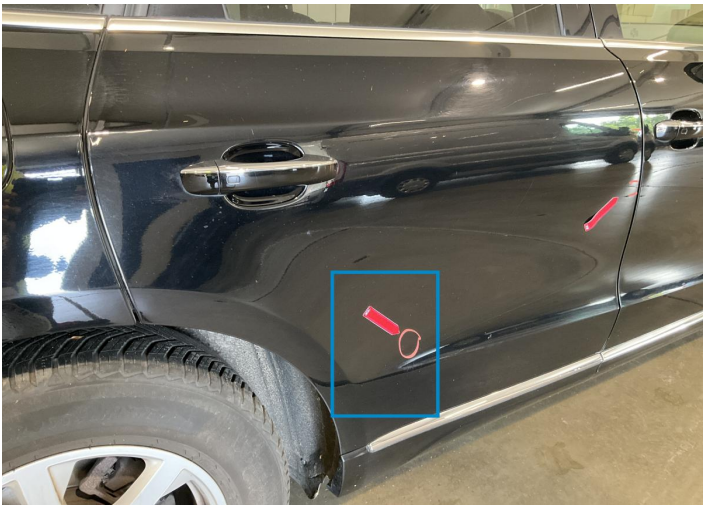
9. Hood
Paint / Stone Chip -



10. Fender / Front Right
Paint / Scratch / Scuff -



11. Door / Front Right
Paint / Scratch / Scuff -



12. Door / Back Right
Bodywork / Dent / Dent -



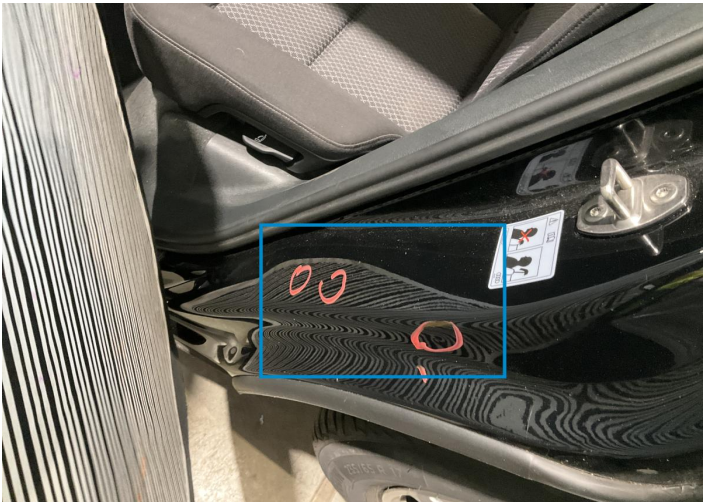
13. Door / Back Right
Paint / Scratch / Scuff -



14. Bumper / Back
Paint / Scratch / Scuff -



15. Door / Back Left
Paint / Scratch / Scuff -



16. Pillar / Back Left
Bodywork / Dent / Dent -



17. Door / Front Left
Bodywork / Dent / Dent -



18. Door / Front Left
Paint / Scratch / Scuff -



19. Bumper / Front
Paint / Stone Chip -



20. Panel Filling / Front Right
Interior / Scraped -



21. Roof
Bodywork / Dent / Dent -

Mechanical Condition

Control Lights

Display Defect	✓	Service Light	✓
ABS Warning Light	✓	ESP Fault/Traction Control Malfunction Light	✓
Diesel Particulate Filter Light	✓	Airbag Warning Light	✓
Oil Pressure Warning Light	✓	Brake Warning Light	✓
Power Steering Warning Light	✓	Alternator / Battery	✓
No Dashboard Lights	✓	Tire Pressure Monitoring System	✓

Equipments Test

Central Locking	✓	Main & Spare Keys Functioning	✓
Electric Windows	✓	Audio Equipment	✓
AC / Heating System	✓	Other Equipments	✓

Engine

Engine Status / EML	✓	Engine Leak Visible	✓
Engine Starts	✓		

Gearbox

Gear Box	✓
----------	---

Levels

Brakes Fluid	✓	Coolant Fluid	✓
--------------	---	---------------	---

Test Drive Inspection

Steering Wheel			
Steering Noise / Anomaly		✔	
Engine			
Engine Noise	✔	The Gears Scratch / Skip / Abnormal Operation	✔
Fume Quantity	✔	Power Loss	✔
Clutch			
Clutch Functioning		✔	
Brake			
Brake System Anomaly		✔	
General			
Test Driven Status		Not Performed	
✔ <i>No troubles detected, good condition or correct tests, according to vehicle age and mileage</i>			
! <i>Damages or malfunction detected that requires repairs by the buyer</i>			
NA <i>Not applicable</i>			
= <i>Not tested</i>			

Disclaimer

Please also note the "UserGuide condition report", which shows the scope of the vehicle description.

[User Guide](#)