



AUDI Q5

Q5 2.0 TDI quattro

VIN NO WAUZZZ8R6AA034666
Registration Number R6AA034666



MOT Date	Number of Owners	Number of Keys	Odometer Reading
2026-09-01	2	1	158336 km
Last Service	Last Service Mileage	First Registration Date	Country First Registered
-	-	2009-10-14	Germany

Inspection Report Summary

Customer	BCA Online	Report Number	P20251007121939
Inspection Date / Place	2025-10-07 / BCA Oberndorf	Cosmetic Grade	3

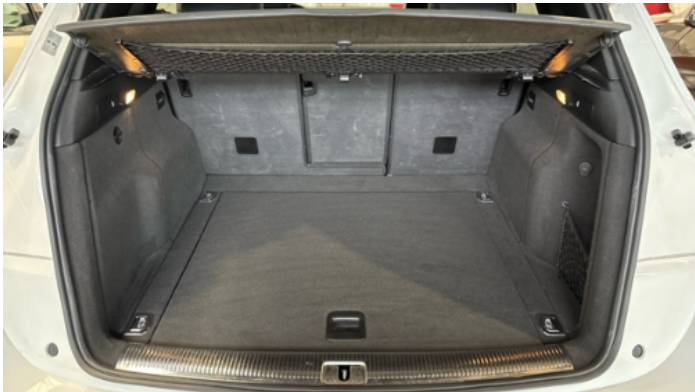
Vehicle Summary

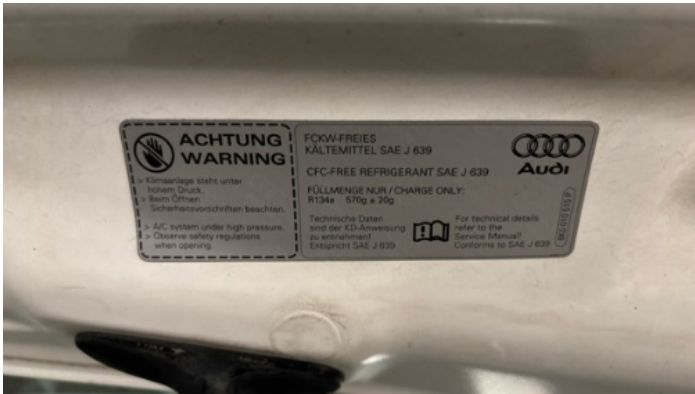
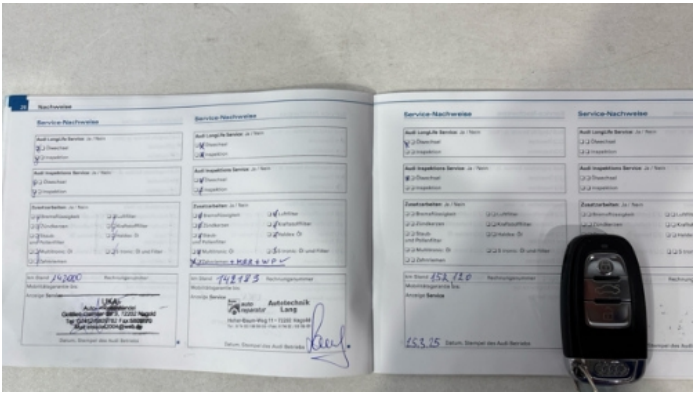
Vehicle Condition	Runner	VAT Type	Margin
Fuel Type	Diesel	Road Worthy	Yes
Colour	White	Engine Size (cc)	1968
Engine Size	2.0	No of Doors	5
Body Type	SUV	Drive Train	All-Wheel-Drive permanent
Seat Colour		No of Seats	5
Seat Covering Name	Schwarz	Seat Covering	Cloth/Leather
Charging Cables		WLTP CO2 Emissions	
Gearbox Type	Manual		

Vehicle History & Documents

Service Book Available	Present	Next Service Mileage	km
Previous Usage		Imported	No
Manufacturer Warrenty			







Equipment

Tinted Glass	Airbag Status	Anti-lock braking	Bluetooth telephone interface
Diesel particulate filter	Front parking sensors	Remote adjusting wing mirrors	Roof rails
Split folding rear seats	Xenon headlamps	Central locking	Electrically folding wing mirrors
Leather steering wheel	Rear parking sensors	Tow ball	Alloys wheels
Auxiliary Socket	Cruise control	Front fog lamps	Heated wing mirrors
Remote central locking	Satellite navigation	Stability control	CD Player
Electrically adjustable seats	Electric tailgate	Radio	

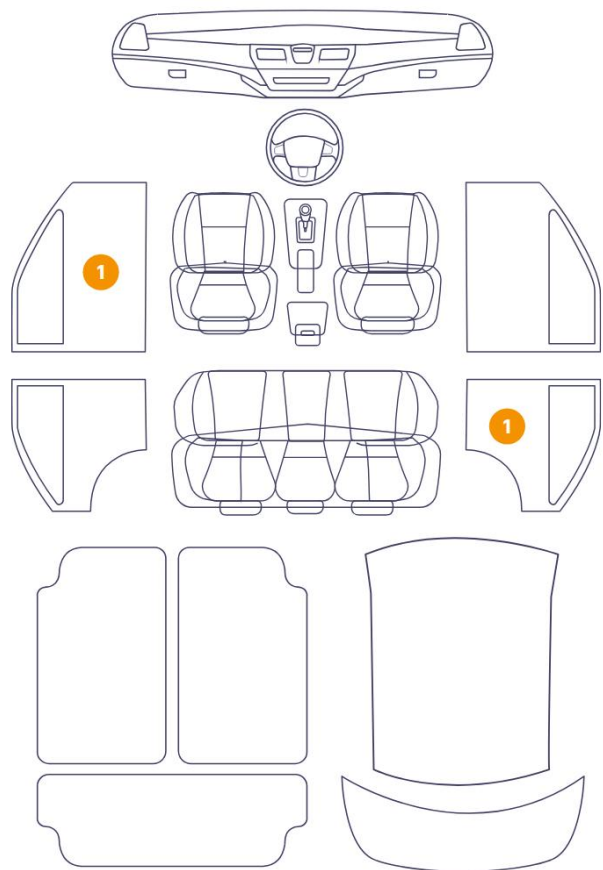
Equipment Details

Tow Ball Type	Detachable	Air Conditioning	Three Zone Climate Control
Alloy Wheel Size	20	Seat Heating	Front

Wheels & Tyres

Right Front Tyre Depth	5	Left Front Tyre Depth	5
Right Rear Tyre Depth	5	Left Rear Tyre Depth	5

3 Schäden

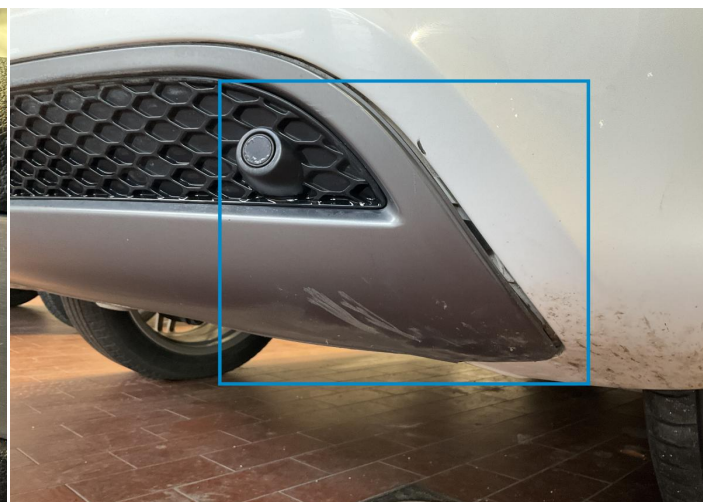


1

6/10 - Report Number P20251007121939



1. Panel Filling / Front Left
Interior / Scratched -



2. Corner Bumper / Back Right
Bodywork / Dent / Dent -



3.
Interior / Broken -



4. Corner Bumper / Front Left
Paint / Scratch / Scuff -



5. Bumper / Front
Paint / Scratch / Scuff -



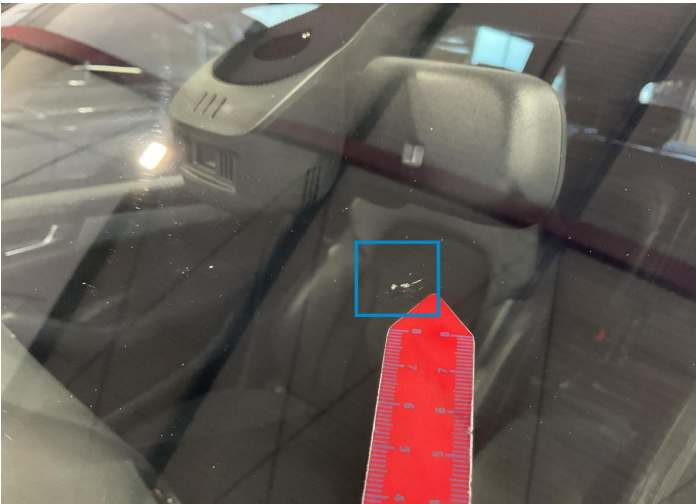
6. Rim / Front Right
Out of Bodywork / Scratch -



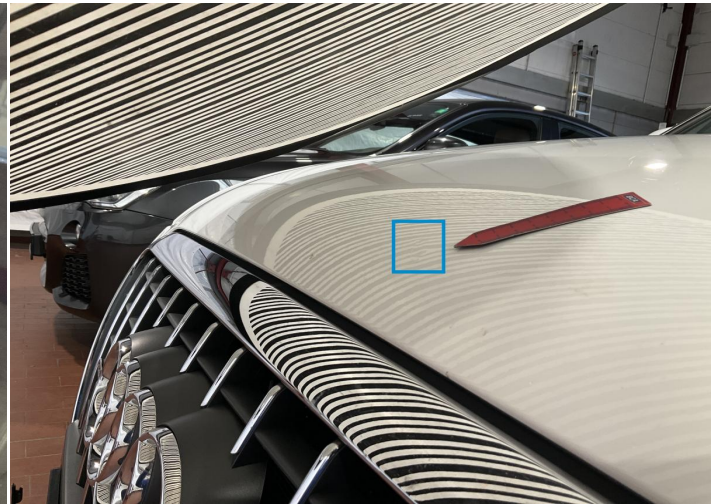
7. Panel Filling / Back Right Interior / Scratched -



8. Door Side Molding / Front Left Paint / Stone Chip -



9. Windshield / Front Glass Break / Impact -



10. Hood Bodywork / Dent / Dent -

Mechanical Condition

Equipments Test

Central Locking	✓	Electric Windows	✓
Audio Equipment	✓	AC / Heating System	✓
Main & Spare Keys Functioning	✓	Navigation System	✓
Parking Sensors / Cameras Functioning	✓	Other Equipments	✓

Control Lights

ABS Warning Light	✓	ESP Fault/Traction Control Malfunction Light	✓
Diesel Particulate Filter Light	✓	Airbag Warning Light	✓
Oil Pressure Warning Light	✓	Brake Warning Light	✓
Power Steering Warning Light	✓	Alternator / Battery	✓
All - wheel Drive	✓	No Dashboard Lights	✓
Display Defect	✓	Service Light	✓
Tire Pressure Monitoring System	✓		

Engine

Engine Status / EML	✓	Engine Leak Visible	❗
Engine Starts	✓		

Gearbox

Gear Box	✓
----------	---

Levels

Brakes Fluid	✓	Coolant Fluid	✓
--------------	---	---------------	---

Test Drive Inspection

Steering Wheel

Steering | Noise / Anomaly

Engine

Engine Noise The Gears Scratch / Skip / Abnormal Operation

Fume Quantity Power Loss

Brake

Brake System Anomaly

Clutch

Clutch Functioning

General

Test Driven Status Not Performed

- No troubles detected, good condition or correct tests, according to vehicle age and mileage
- Damages or malfunction detected that requires repairs by the buyer
- Not applicable
- Not tested

Disclaimer

Please also note the "UserGuide condition report", which shows the scope of the vehicle description. [User Guide](#)