




AUDI A4
A4 Avant 2.0 TDI DPF


VIN NO WAUZZZ8KX9A005315
Registration Number KX9A005315



MOT Date

 2027-01-01


Last Service

 2025-01-03

Number of Owners

 3


Last Service Mileage

 190662


Number of Keys

 2


First Registration Date

 2009-06-16

Odometer Reading

 193155 km

Country First Registered

 Germany

Inspection Report Summary

Customer	BCA Online	Report Number	P20250605114608
Inspection Date / Place	2025-06-05 / BCA Neuss	Cosmetic Grade	5

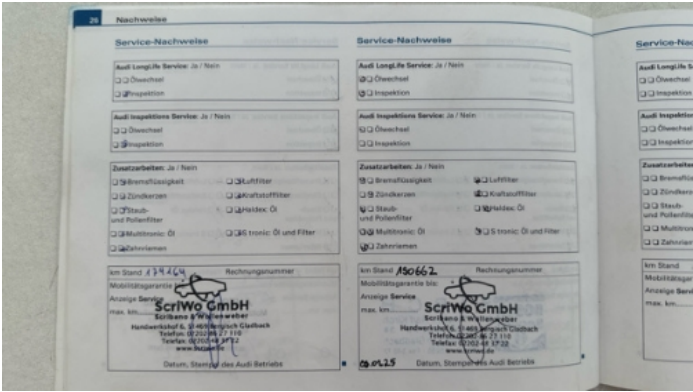
Vehicle Summary

Vehicle Condition	Runner	VAT Type	Margin
Fuel Type	Diesel	Road Worthy	Yes
Colour	Silver	Engine Size (cc)	1968
Engine Size	2.0	No of Doors	5
Body Type	Stationwagon / Estate	Drive Train	Front
Seat Colour		No of Seats	5
Seat Covering Name	Schwarz	Seat Covering	Synthetic Leather
Charging Cables		NEDC CO2 Rating (q/km)	135
Gearbox Type	Manual		

Vehicle History & Documents

Service Book Available	Present	Next Service Mileage	km
Previous Usage		Imported	No
Manufacturer Warrenty			







Equipment

Airbag Status	Anti-lock braking	Diesel particulate filter	Remote central locking
Stability control	Xenon headlamps	Electrictailgate	Alloys wheels
Cruise control	Remote adjusting wing mirrors	Roof rails	Sunroof
Electrically adjustable seats	Leather steering wheel		

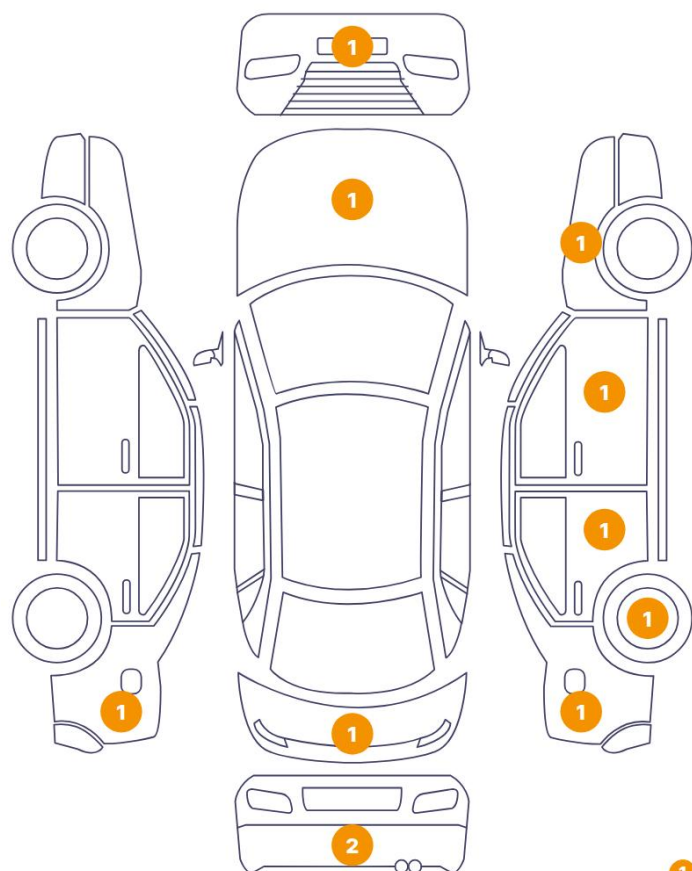
Equipment Details

Air Conditioning	Dual Zone Climate Control	Alloy Wheel Size	18
Seat Heating	Front	Sunroof Type	Opening Panoramic

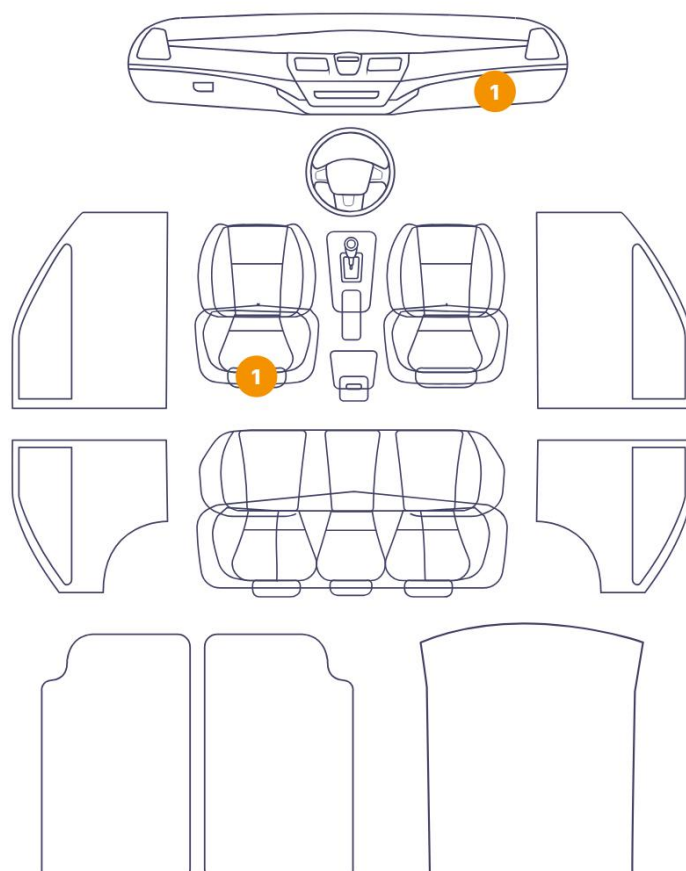
Wheels & Tyres

Right Front Tyre Depth	5	Left Front Tyre Depth	5
Right Rear Tyre Depth	5	Left Rear Tyre Depth	5

12 Damages



2 Damages

6/12 - Report Number P20250605114608



1. Seat / Front Left
Interior / Non - compliant -



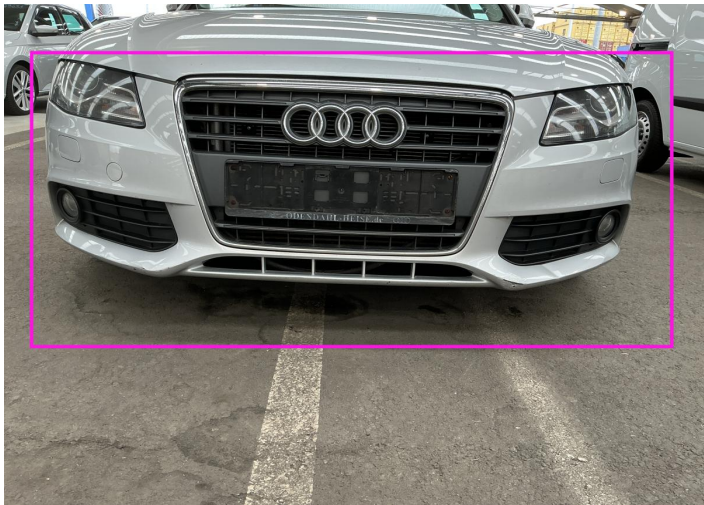
2. Steering Wheel / Front
Interior / Worn - out -



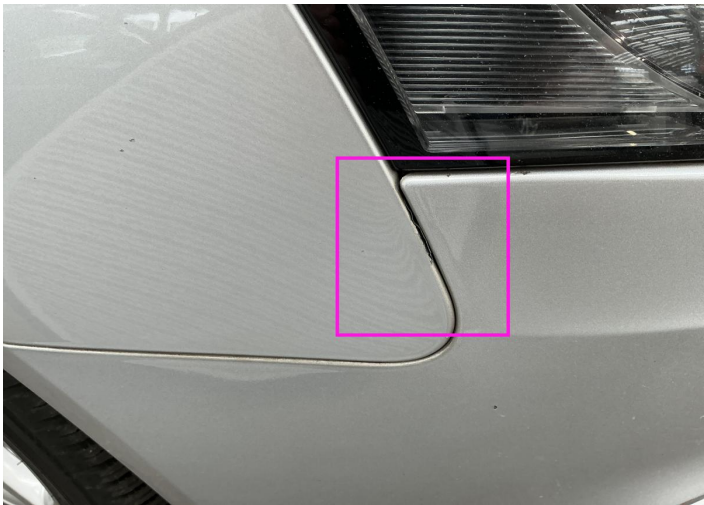
3.
Paint / Poor Previous Repair -



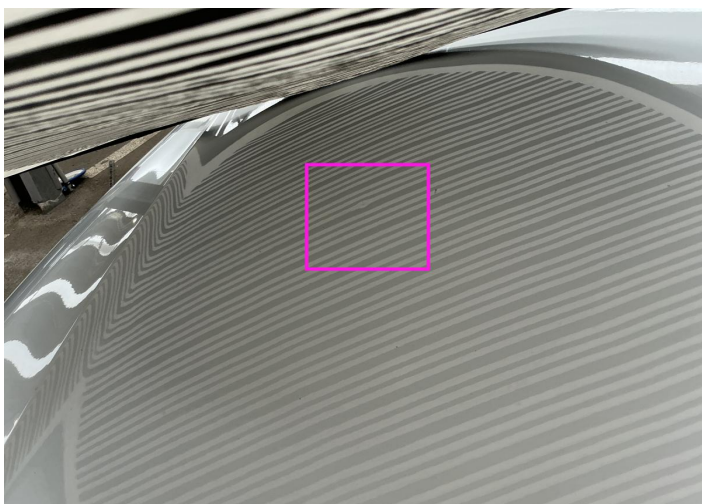
4. Fuel Door / Back Right
Bodywork / Breakage -



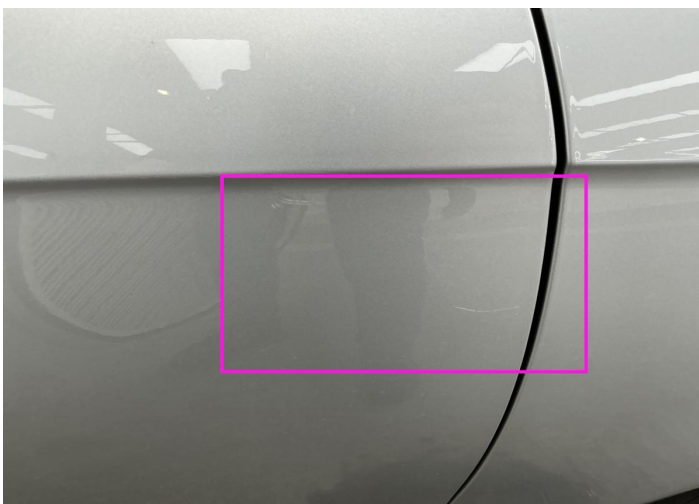
5. Bumper / Front
Bodywork / Breakage / Crack -



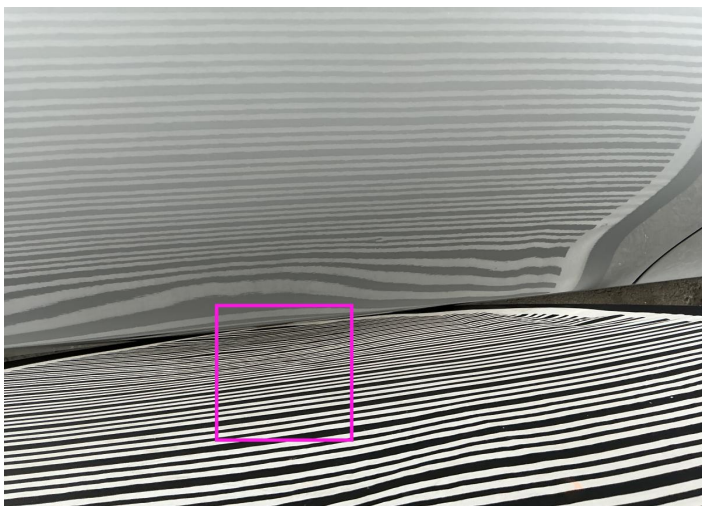
6. Fender / Front Right
Paint / Poor Previous Repair -



7. Hood
Bodywork / Dent / Dent -



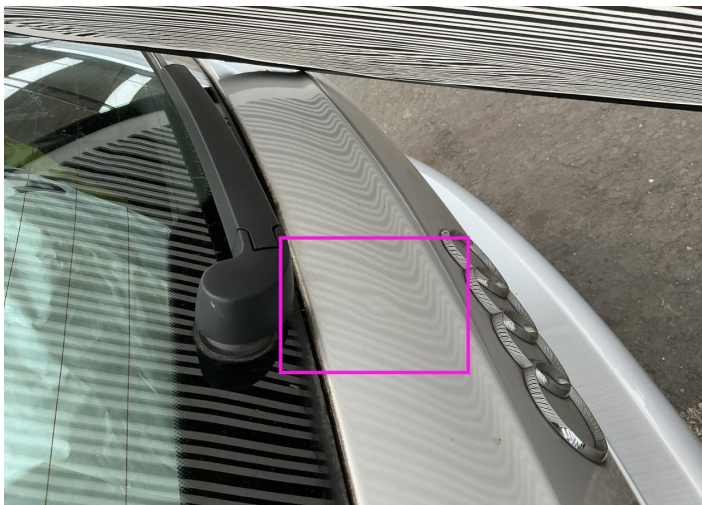
8. Door / Front Right
Paint / Scratch / Scuff -



9. Door / Back Right
Bodywork / Dent / Dent -



10. Rim / Back Right
Out of Bodywork / Scratch -



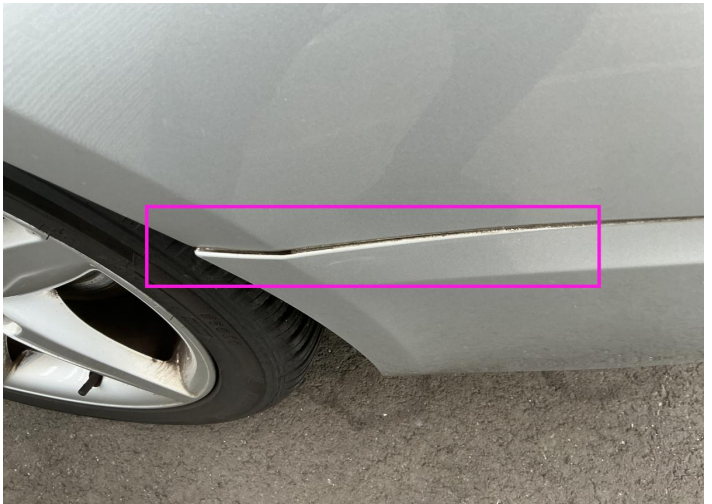
11. Tailgate
Bodywork / Dent / Dent -



12. Bumper / Back
Bodywork / Dent / Dent -



13. Side Panel / Back Left
Paint / Scratch / Scuff -



14. Bumper / Back
Bodywork / Breakage -

Mechanical Condition

Control Lights

Display Defect	✓	Service Light	✓
ABS Warning Light	✓	ESP Fault/Traction Control Malfunction Light	✓
Diesel Particulate Filter Light	✓	Airbag Warning Light	✓
Oil Pressure Warning Light	✓	Brake Warning Light	✓
Power Steering Warning Light	✓	Alternator / Battery	✓
No Dashboard Lights	✓	Tire Pressure Monitoring System	✓

Equipments Test

Main & Spare Keys Functioning	✓	Electric Windows	✓
AC / Heating System	✓	Audio Equipment	⚠
Navigation System	⚠		

Engine

Engine Status / EML	✓	Engine Leak Visible	✓
Engine Starts	✓		

Gearbox

Gear Box	✓
----------	---

Levels


Brakes Fluid	✓	Coolant Fluid	⚠
--------------	---	---------------	---

Test Drive Inspection


Steering Wheel

Steering | Noise / Anomaly 


Engine

Engine Noise		Fume Quantity	
Power Loss		The Gears Scratch / Skip / Abnormal Operation	


Brake





Brake System Anomaly 

Clutch

Clutch Functioning 

General

Test Driven Status 

-  **No troubles detected, good condition or correct tests, according to vehicle age and mileage**
-  **Damages or malfunction detected that requires repairs by the buyer**
-  **Not applicable**
-  **Not tested**

Disclaimer

Please also note the "UserGuide condition report", which shows the scope of the vehicle description. [User Guide](#)