



# AUDI A4

## A4 Avant 2.0 TDI DPF quattro S tronic

VIN NO WAUZZZ8K0EA102470  
Registration Number K0EA102470



MOT Date



Last Service

2023-05-13

Number of Owners



Last Service Mileage

177754

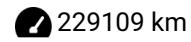
Number of Keys



First Registration Date

2014-02-18

Odometer Reading



Country First Registered

Germany

### Inspection Report Summary

Customer	BCA Online	Report Number	P20250922084416
Inspection Date / Place	2025-09-22 / BCA Oberndorf	Cosmetic Grade	4

### Vehicle Summary

Vehicle Condition	Runner	VAT Type	Margin
Fuel Type	Diesel	Road Worthy	Yes
Colour	White	Engine Size (cc)	1968
Engine Size	2.0	No of Doors	5
Body Type	Stationwagon / Estate	Drive Train	All-Wheel-Drive permanent
Seat Colour		No of Seats	5
Seat Covering Name		Seat Covering	Cloth
Charging Cables		NEDC CO2 Rating (q/km)	144
Gearbox Type	Automatic		

### Vehicle History & Documents

Service Book Available	Present	Next Service Mileage	km
Previous Usage		Imported	No
Manufacturer Warrenty			









Equipment

Tow ball	Alloys wheels	Bluetooth telephone interface	Front fog lamps
Heated wing mirrors	Remote central locking	Satellite navigation	Stability control
Leather steering wheel	Rear parking sensors	Airbag Status	Anti-lock braking
Cruise control	Front parking sensors	Remote adjusting wing mirrors	Roof rails
Split folding rear seats	Xenon headlamps	Radio	

Equipment Details

Tow Ball Type	Detachable	Alloy Wheel Size	17
Seat Heating	Front		

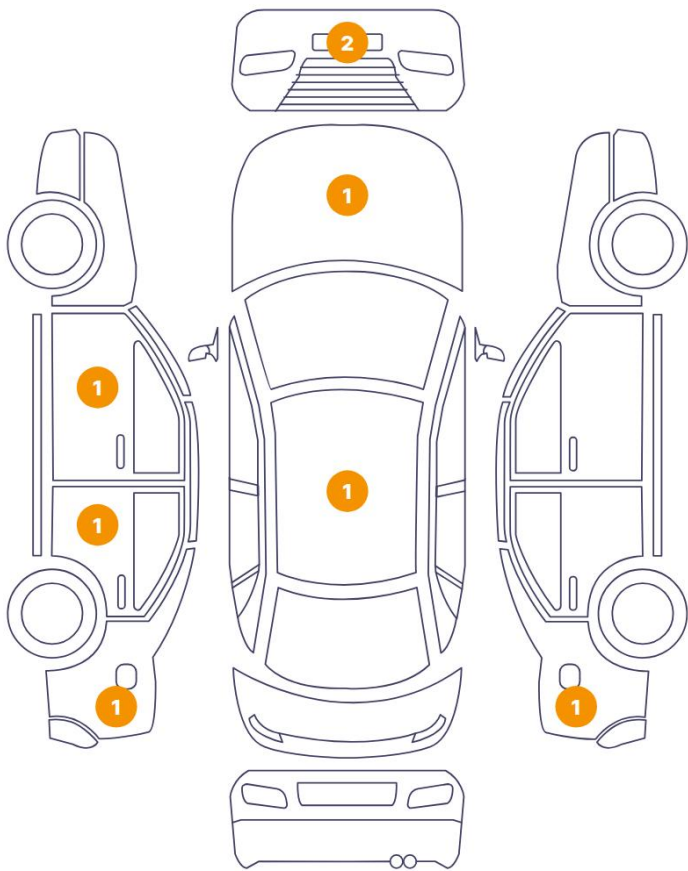
Wheels & Tyres

Right Front Tyre Depth	4	Left Front Tyre Depth	5
Right Rear Tyre Depth	6	Left Rear Tyre Depth	6

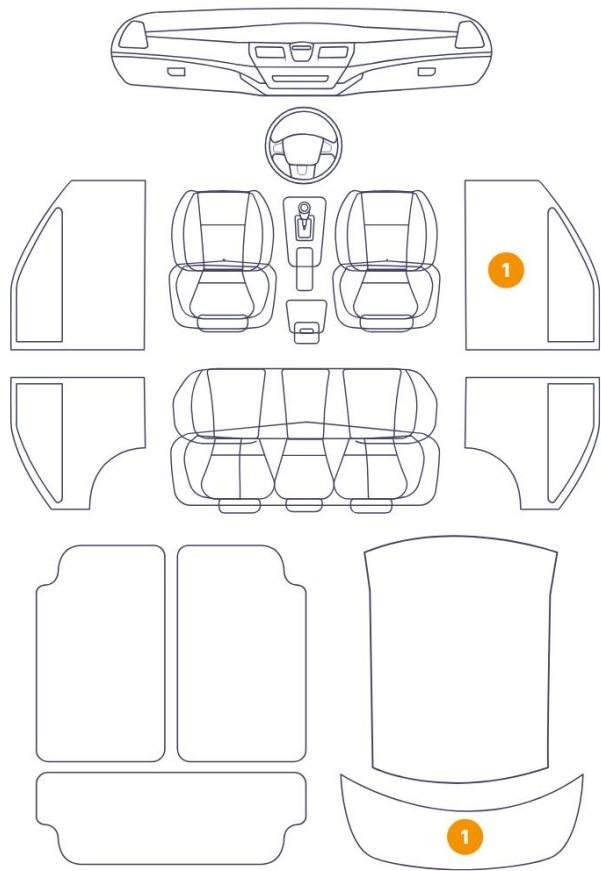


Cosmetic Damage

8 Schäden



2 Schäden



Component		Damage	Comments
1	Door Step / Front Right	Interior / Scratched	
2	Tailgate Upholstery / Back	Interior / Scratched	
3	Side Panel / Back Left	Paint / Poor Previous Repair	
4	Bumper / Front	Bodywork / Breakage / Hole	
5	Hood	Paint / Stone Chip	
6	Side Panel / Back Right	Paint / Poor Previous Repair	
7	Roof	Bodywork / Dent / Dent	
8	Door / Back Left	Bodywork / Dent / Dent	
9	Mirror Shell / Front Left	Paint / Scratch / Scuff	
10	Bumper / Front	Paint / Scratch / Scuff	



1. Door Step / Front Right  
Interior / Scratched -



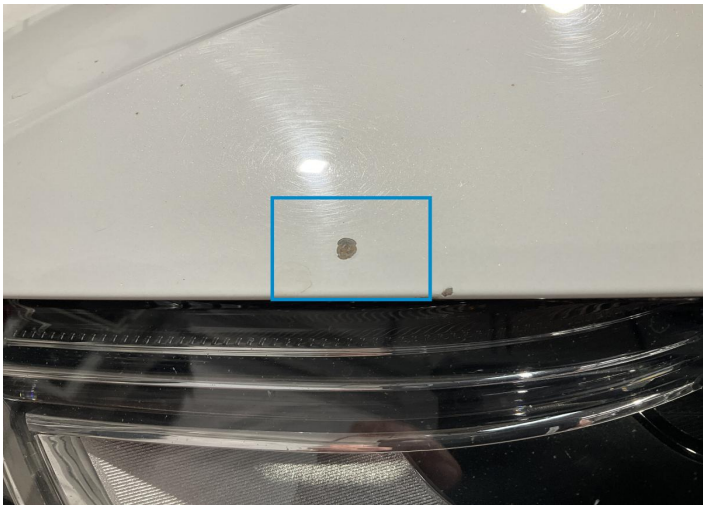
2. Tailgate Upholstery / Back  
Interior / Scratched -



3. Side Panel / Back Left  
Paint / Poor Previous Repair -



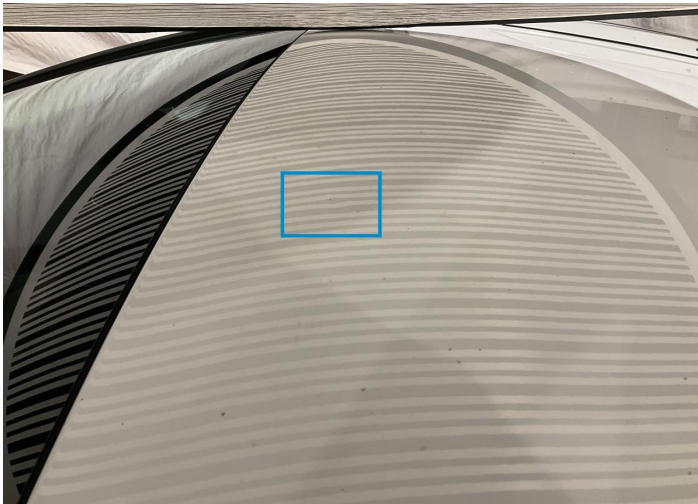
4. Bumper / Front  
Bodywork / Breakage / Hole -



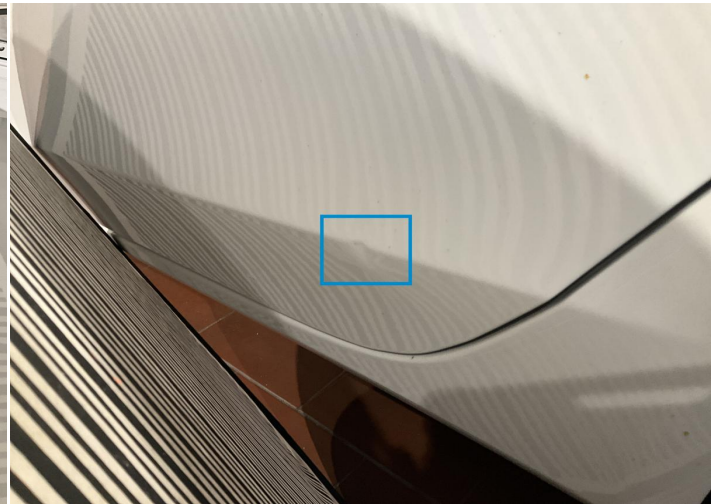
5. Hood  
Paint / Stone Chip -



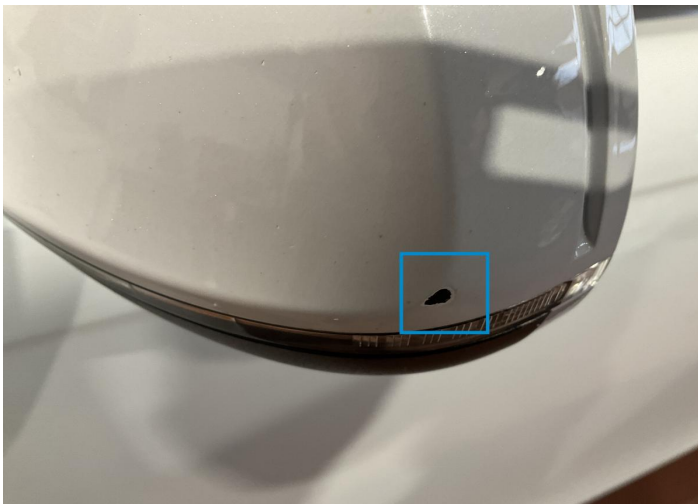
6. Side Panel / Back Right  
Paint / Poor Previous Repair -



7. Roof  
Bodywork / Dent / Dent -



8. Door / Back Left  
Bodywork / Dent / Dent -



9. Mirror Shell / Front Left  
Paint / Scratch / Scuff -



10. Bumper / Front  
Paint / Scratch / Scuff -



## Mechanical Condition

### Control Lights

Display Defect	✓	Service Light	✓
ABS Warning Light	✓	ESP Fault/Traction Control Malfunction Light	✓
Airbag Warning Light	✓	Brake Warning Light	✓
Power Steering Warning Light	✓	Alternator / Battery	✓
No Dashboard Lights	✓		

### Equipments Test

Central Locking	✓	Main & Spare Keys Functioning	✓
Electric Windows	✓	AC / Heating System	✓

### Engine

Engine Status / EML	✓	Engine Leak Visible	✓
Engine Starts	✓		

### Gearbox

Gear Box	✓
----------	---

### Levels

Brakes Fluid	✓	Coolant Fluid	✓
--------------	---	---------------	---

## Test Drive Inspection

### Steering Wheel

Steering   Noise / Anomaly	✓
----------------------------	---

### Engine


Engine Noise	✓	Fume Quantity	✓
Power Loss	✓		

### General

Test Driven Status	Not Performed
--------------------	---------------

✓ **No troubles detected, good condition or correct tests, according to vehicle age and mileage**

! **Damages or malfunction detected that requires repairs by the buyer**

 *Not applicable*

 *Not tested*

Disclaimer

---

*Please also note the "UserGuide condition report", which shows the scope of the vehicle description.*

[User Guide](#)