



Expertise

Protocol number: 41771586
Order number / reference: 25277429
Inspection date: 1 Oct 2025

Manufacturer: Audi

Model: Q7 50 TDI quattro tiptronic S line

VIN: WAUZZZ4M1ND003033



Vehicle details	
Manufacturer / Type / Model / Equipment	
Audi Q7 50 TDI quattro tiptronic S line	
Vehicle Identification number	WAUZZZ4M1ND003033
Mileage (Read)	36,430 km
First registration	27 Sept 2021
Number of holders	1
Next periodical technical inspection	09/2026
(Report not on hand)	
Power / Engine displacement	210 kw / 2,967 ccm
Fuel type / Cylinder	Hybrid Diesel / E / 6
Gearbox / Number of gears	Automatic / 8
Type of drive	All-wheel drive
Type of vehicle	SUV
Colour / colour code	Mythossschwarz Metallic
Doors / Seats	5 / 5
Upholstery type	Alcantara / Leather
Colour of upholstery	Black
Re/Import	no
Driving readiness	Roadworthy



Vehicle details

Maintenance booklet / proof	digital proof / incomplete	Next maintenance in	-21 Tag(e)
Last maintenance on / at	09/2024 at 23,445 km		
Key is / should be	2 / 2	FZG documents	ZB#2 (B) was available (copy), ZB#1 (S) was not available
		Letter No.	GD285827
Previous damage / Accident	None detectable	Repainting	None detectable
Inspection conditions	sufficient	Lifting equipment / pit	yes
Test drive	Not performed	Engine function test	Performed
Driving readiness	Roadworthy		
Manufacturer key number/ type code number	0588 / BNK 01201		
Emission standard	EURO6;WLTP;AP;PI/CI; M, N1 I	Fine dust sticker	
Permitted total weight	3,015 kg	Empty weight	

Tyres

Mounted tyres

#	Tyre size	Type of tyre	Manufacturer	Tread depth
1)	285/45 R20 112Y	Summer tyres on Light alloy	Dunlop	6mm / 6mm
2)	285/45 R20 112Y	Summer tyres on Light alloy	Dunlop	6mm / 6mm

Additional tyres

#	Tyre size	Type of tyre	Manufacturer	Tread depth
1)	255/55 R19 111H	Winter tyres on Light alloy	Pirelli	6mm / 6mm
2)	255/55 R19 111H	Winter tyres on Light alloy	Pirelli	6mm / 6mm

Replacement

Typ	Tyre size	Type of tyre	Manufacturer	Tread depth
	Tirefit	Expiration date 06/2026		

Legend: Tread depth information for tires on the left is in the first place, for tires on the right is in the second place on the axle in the direction of travel

Equipment

Standard equipment

- | | |
|---|---|
| <ul style="list-style-type: none"> • AdBlue tank (24 liters) • Airbag: Front side airbags and head airbag system • Anti-lock braking system (ABS) • Audi connect emergency call & service with Audi connect Remote & Control • Audi virtual cockpit with 12.3" color display • Exterior mirror housings painted in body color • Vehicle tool kit • Fabric headliner • Roof rails in aluminum • Diesel particulate filter (DPF) • Door sills with aluminum insert • Chassis: adaptive air suspension-sport • Cruise control including speed limiter • Rear window wiper • Interior mirror automatically dimming, frameless • Parental controls • 2-zone comfort automatic climate control • Fuel tank (75 liters) • LED rear lights • Steering wheel: Leather steering wheel in 3-spoke design with multifunction plus • MMI Navigation plus with MMI touch response • Non-smoking version • Wheel: light alloy wheels, 5-arm star • Wheel: Tire repair kit • Radio accessories: Audi sound system • Rear seat bench/backrest split folding • Seat covers: leather/synthetic leather mono.pur 550 combination • Sun visor with illuminated vanity mirror on driver and passenger side • Bumpers: S line bumpers in full paint finish • Separation net • Glazing: Windscreen in thermal insulation glazing • Electronic immobilizer | <ul style="list-style-type: none"> • Airbag for driver and front passenger • "quattro" all-wheel drive with self-locking center differential • Audi connect navigation & infotainment • Audi drive select • Audi pre sense front • Exterior mirrors electrically adjustable, heated and foldable • Control buttons in glossy black with haptic feedback and enhanced aluminum look • Roof edge spoiler including 3rd brake light • Decorative inlays: diamond lacquer silver grey • Parking aid plus with surrounding display • Electronic Stabilization Control (ESC) • Floor mats front and rear • Transmission: 8-speed automatic transmission tiptronic • Interior lighting • Camera-based traffic sign recognition • Child seat attachment ISOFIX and Top Tether • Front headrests • Load compartment cover manually • LED headlights • Steering column, manually height and axially adjustable • Front center armrest • MMI touch response • Gloss Package • Wheel: Tire pressure monitoring indicator • Radio accessories: Audi music interface • Radio accessories: Digital radio reception (DAB) • Power steering, electromechanical • Seats: Standard seats in the front • Heated front seats • Lane Departure Warning • Start-stop system • Phone: Bluetooth interface • Bandage material with warning triangle • Glazing: Heat-insulating glazing tinted green • Central locking with radio remote control |
|---|---|

Extra equipment

- | | |
|--|---|
| <ul style="list-style-type: none"> • 48-volt electrical system (The 48-volt electrical system enables fuel consumption advantages through the use of a belt starter generator with higher electrical output and provides a basis for further electrification of the vehicle with high-performance chassis systems.) | <ul style="list-style-type: none"> • Ambient lighting package (in addition to the standard interior lighting in white LED light: - Ambient lighting for the front/rear door mirrors - Approach lighting from the outside door handles, front/rear - Ambient lighting for the instrument panel - Ambient lighting for the front center console) |
|--|---|



- Chassis: Adaptive air suspension (electronically controlled air suspension with continuously adaptive damping system on all four wheels; automatically adjusts vehicle level and damping depending on the load. Various modes can be selected via Audi drive select. Trim positions when stationary: +60 mm in "lift" +25 mm in "allroad"/"offroad" +/- 0 mm in "auto"/"comfort" - 15 mm in "dynamic!" - 30 mm in highway level (from 160 km/h in "auto"/"dynamic", not manually selectable))
- Elimination of model name and performance/technology lettering
- Manual sun blind (for the rear window and rear door windows)
- Matrix LED headlights with dynamic turn signals (In addition to the Matrix LED function, the headlights feature the following functions: visually enhanced daytime running lights, low beam, high beam, position light, dynamic turn signals, cornering light, all-weather light, maneuvering light, motorway light, static cornering light, and automatic dynamic headlight range control. LED rear lights with dynamic turn signals: turn signals, brake lights, tail lights, reversing lights, and rear license plate lights in LED technology.)
- Phone: Audi smartphone interface (The Audi smartphone interface (Android Auto and Apple CarPlay) connects your smartphone to your Audi and seamlessly displays your smartphone content directly on the MMI display via USB. Navigation, telephony, music, and selected third-party apps can be conveniently controlled via the MMI touch display and via voice control on your smartphone.)
- S line sports package (sports seats in the front - seat upholstery in Alcantara frequency/leather combination - 3-spoke leather steering wheel with multifunction plus including steering wheel grips in perforated leather and S line emblem - selector lever in perforated black leather - matt brushed aluminum decorative inlays - door sills with aluminum inserts at the front and rear, illuminated, with S lettering at the front - headliner in black fabric - stainless steel loading sill protectors - floor mats at the front and rear with contrasting stitching)
- Seats: Front sports seats (with electric adjustment of seat height, seat fore/aft position, seat and backrest angle, and seat depth adjustment - manual adjustment of headrest and belt height, with pronounced side bolsters for better lateral support when cornering - electric 4-way lumbar support)
- Tour Assistance Package (Adaptive Driving Assistant - Adaptive Cruise Control - Speed Limiter - Efficiency Assistant - Turning Assistant - Evasion Assistant - Emergency Assistant)
- Anti-theft alarm system (The anti-theft alarm system monitors the doors, hood, and trunk lid. The safe lock, coupled with the door locks, prevents the door from being opened using the inside door handle once the vehicle has been locked with the key. The anti-theft alarm system also features: switchable ultrasonic interior monitoring, warning in the event of theft via a tilt angle sensor, and a battery-powered horn to prevent wiring tampering.)
- Black styling package plus (Audi rings front and rear, as well as Q7 lettering on the radiator grille and trunk lid in glossy black; also includes the black styling package: black accents on the Audi Singleframe, the trim strips on the side windows, the side door inserts, and the front and rear bumpers. Roof rails in black)
- Comfort center armrest in the front (adjustable lengthwise or in inclination for driver and front passenger together - additional storage space in the fold-out storage compartment)
- Glazing: Privacy glazing (tinted windows) (rear window, rear door and side windows tinted)
- Head-up display (projects the speed and other driver-relevant information from optional equipment such as assistance systems and navigation, as well as warnings, into the driver's direct field of vision; height adjustable; enables high-contrast, multi-color display with reduced distraction from the road)
- Headlining in black fabric
- ISOFIX child seat attachment for the front passenger seat
- Paint finish: metallic
- Roof rails black
- Seat covers in Alcantara Frequency/leather combination (for sports seats: - seat center panel of the front seats, the rear seats in the 2nd row, and both seats in the 3rd row (if ordered) in Alcantara Frequency - seat side bolsters and front of the headrests of the front seats and the rear seats in the 2nd row in leather - seat side bolsters and front of the headrests of the two seats in the 3rd row (if ordered) in synthetic leather - S-embossing in the backrests of the front seats)
- Steering wheel: 3-spoke leather steering wheel with multifunction plus, heated (with shift paddles)
- Wheel: Light alloy wheels, 10-spoke star, graphite grey, high-sheen (9 J x 20 with 285/45 R 20 tires)
- Wheel: Wheel bolts with anti-theft protection and wheel loosening detection (wheel bolts can only be loosened with the supplied adapter. Wheel loosening detection detects loosening of the wheel bolts and issues a warning in the driver information system)



Brief expert findings

Documents submitted	At the time of the inspection, the registration certificate Part 2 (letter) was available, but the registration certificate Part 1 (certificate) was not. (Copy)
VIN comparison	The vehicle identification number (VIN) was read from the vehicle and its conformity with the submitted documents was verified during the inspection by the undersigned.
Inspection	The inspection conditions were sufficient for the assessment of the vehicle. Lifting equipment and a pit were available for examining the vehicle.
Test drive	No test drive/maneuvering was carried out during the inspection of the vehicle.
Engine function test	An engine test run was performed.
Driving readiness	The vehicle was drivable at the time of inspection.

Value reducing factors

No.	Component group	Description
1	Door - front right side	Door edge - Scratch(es) - Smart repair
2	Mudguard - right side	Mudguard - right side - Scratch(es) - Paint
3	Mudguard - left side	Mudguard - left side - Scratch(es) - Paint
4	Boot lid / rear door	Boot lid - Scratch(es) - Paint
5	Rear bumper	Rear bumper - Scratch(es) - Paint
6	Door - rear right side	Door - Scratch(es) - Paint
7	Door - rear left side	Door - Scratch(es) - Paint
8	Misc.	Inspection / maintenance - Due - Perform
9	Front bumper	Front bumper - Scratched - Paint
10	Door - front left side	Door - Dent / paintcoat damage - Repair and paint

Wear and tear

No.	Component group	Description
1	Vehicle glazing	Windscreen - Stone chips - No deduction
2	Bonnet	Bonnet - Scratch(es) - No deduction

The vehicle shows signs of wear commensurate with its age and use.

Order/Scope of order

The order was placed to prepare a sales report for the vehicle described. This includes the following:

- Description of core relevant information about the vehicle
- Documentation of equipment features
(*Delivery by third-party service providers*)
- Documentation of damage, defects, missing parts
- Documentation of previous damage, unrepaired previous damage, repainting
- a brief visual or functional inspection of the equipment details if possible.
(*Functional tests of driver assistance systems are not included in the scope of services!*)
- a photo documentation of the vehicle



Basis for the order

This product is based on the Alphabet Fuhrpark GmbH guidelines for vehicle returns and valuations. The expert makes the explicit findings in each individual case objectively within the framework of the specified standards based on his or her own expertise.

The vehicle inspection takes place in a disassembled state.

Damage or defects that can only be detected during disassembly/diagnosis work or through advanced knowledge remain within the scope of the prognosis risk. An extended risk exists for concealed defects caused by fraudulent deception and not identifiable by the expert.

Damage or defects resulting from normal use or wear and tear of the vehicle will be accepted according to the applicable standard.

There was no explicit identification or monetary consideration of the expected features within the product.

Features which in their nature and severity slightly exceed normal use but do not constitute unacceptable damage will be documented and identified under signs of use if necessary.

Damage or defects that can no longer be attributed to normal use or wear and tear according to the underlying standard are listed in the product under value-reducing factors.

Depending on the product specification, a monetary ID can be provided. If this takes place, the costs can be 100% d or pro rata depending on the vehicle's age and mileage.

Previous damages

Apparently, no repaired previous damage could be found on the vehicle.

Comments

- Winterradsatz ist kein Bestandteil des Auslieferumfangs.



Figure 1: Diagonal front (left)



Figure 2: Diagonal front (right)



Figure 3: Diagonal rear (left)



Figure 4: Diagonal rear (right)



Figure 5: Interior - front



Figure 6: Interior - rear



Figure 7: Instrument cluster



Figure 8: Instrument panel



Figure 9: Interior 360° view



Figure 10: Cargo area

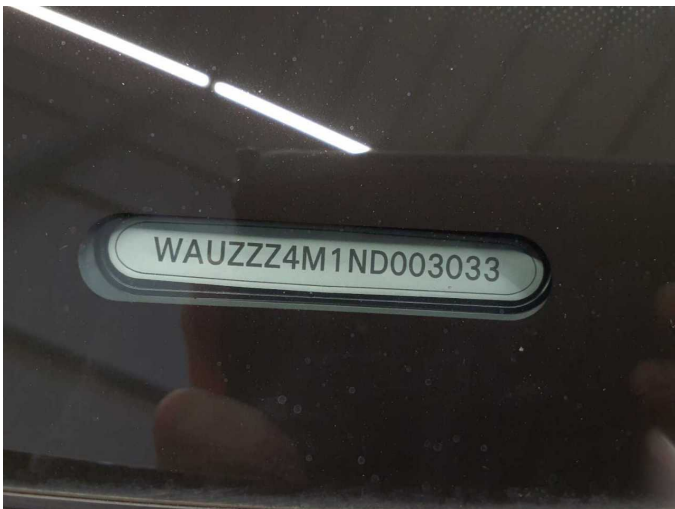


Figure 11: VIN



Figure 12: Mounted tyres

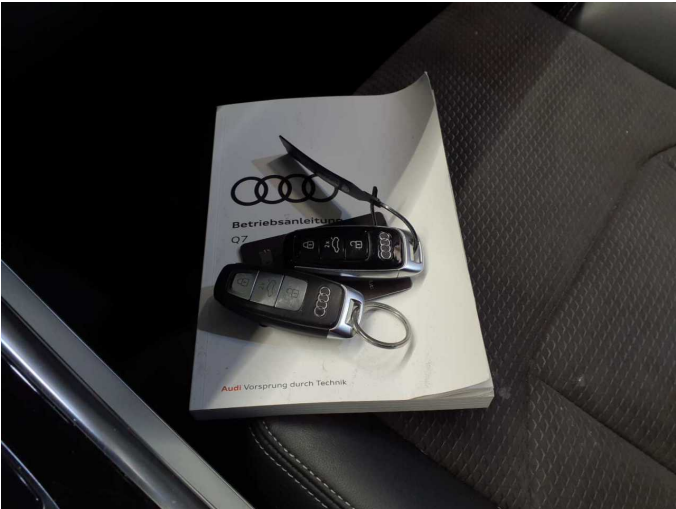


Figure 13: Documents



Figure 14: Documents



Figure 15: Additional tyres



Figure 16: Navigation



Figure 17: Misc.



Figure 18: Misc.



Figure 19: Misc.



Figure 20: Misc.



Figure 21: Misc.

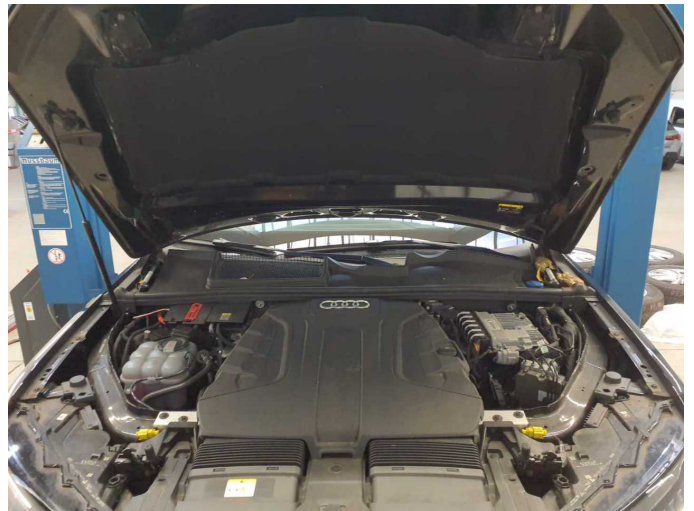


Figure 22: Misc.



Figure 23: Misc.



Figure 24: Misc.



Figure 25: Misc.



Figure 26: Misc.



Figure 27: Misc.



Figure 28: Misc.



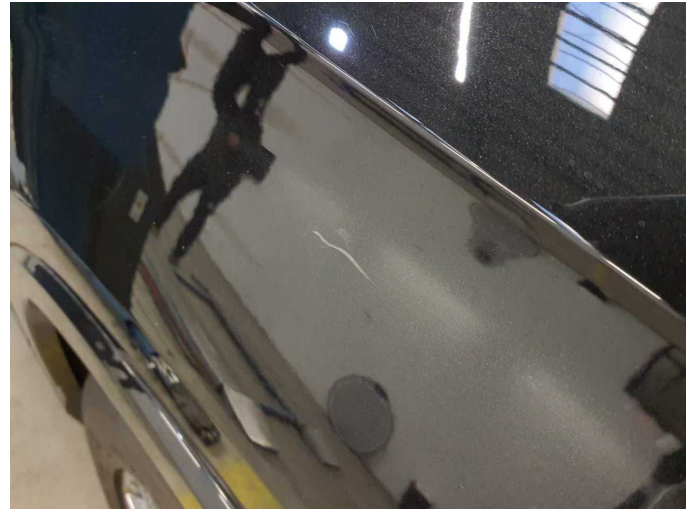
Damage 1: Door - front right side: Door edge - Scratch(es) - Smart repair



Damage 1: Door - front right side: Door edge - Scratch(es) - Smart repair



Damage 2: Mudguard - right side: Mudguard - right side - Scratch(es) - Paint



Damage 2: Mudguard - right side: Mudguard - right side - Scratch(es) - Paint



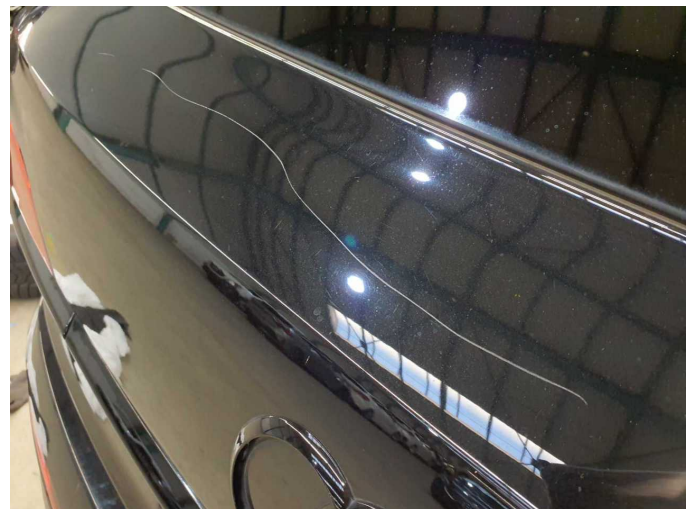
Damage 3: Mudguard - left side: Mudguard - left side - Scratch(es) - Paint



Damage 3: Mudguard - left side: Mudguard - left side - Scratch(es) - Paint



Damage 4: Boot lid / rear door: Boot lid - Scratch(es) - Paint



Damage 4: Boot lid / rear door: Boot lid - Scratch(es) - Paint



Damage 5: Rear bumper: Rear bumper - Scratch(es) - Paint



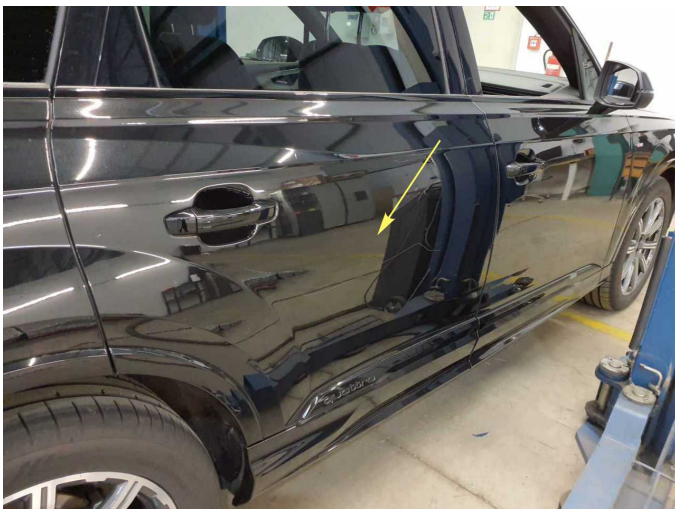
Damage 5: Rear bumper: Rear bumper - Scratch(es) - Paint



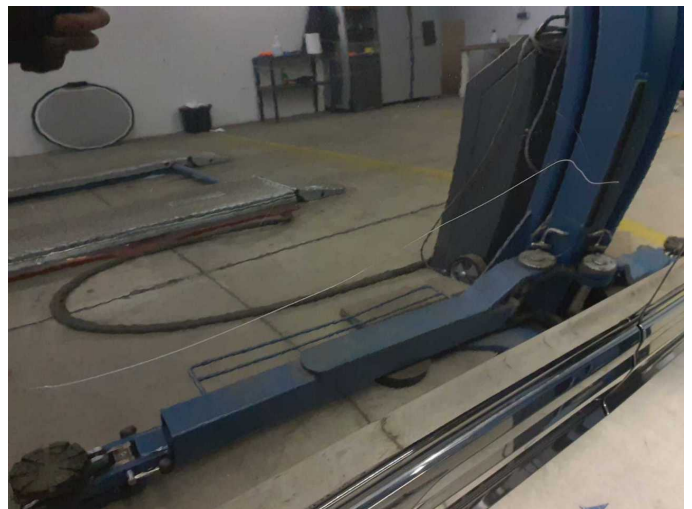
Damage 5: Rear bumper: Rear bumper - Scratch(es) - Paint



Damage 5: Rear bumper: Rear bumper - Scratch(es) - Paint



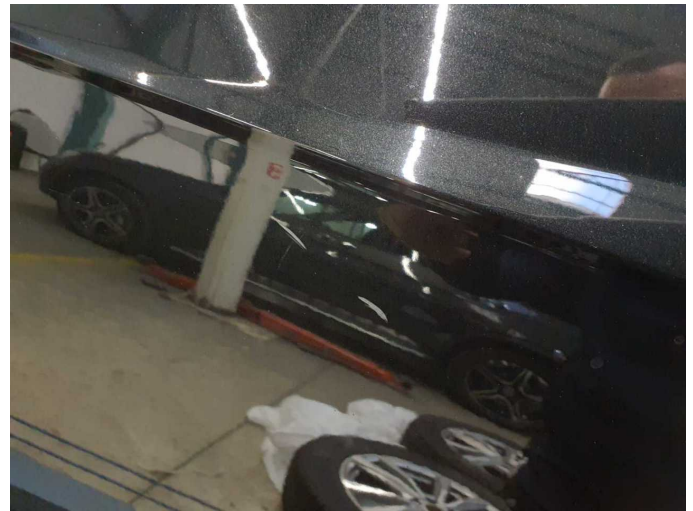
Damage 6: Door - rear right side: Door - Scratch(es) - Paint



Damage 6: Door - rear right side: Door - Scratch(es) - Paint



Damage 7: Door - rear left side: Door - Scratch(es) - Paint



Damage 7: Door - rear left side: Door - Scratch(es) - Paint



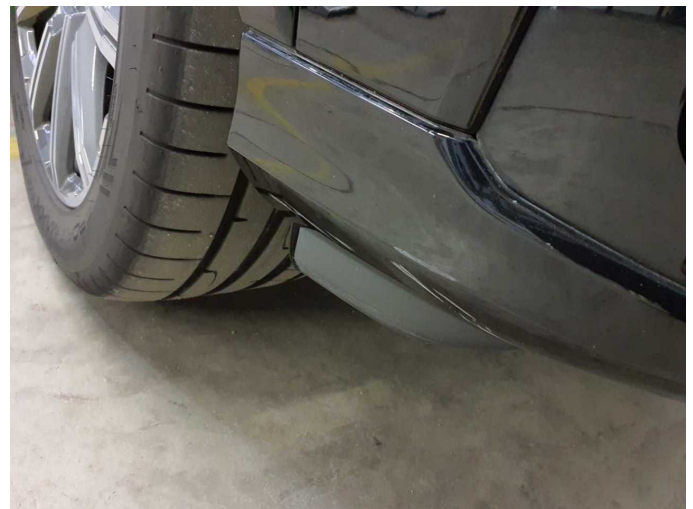
Damage 8: Misc.: Inspection / maintenance - Due - Perform



Damage 9: Front bumper: Front bumper - Scratched - Paint



Damage 9: Front bumper: Front bumper - Scratched - Paint



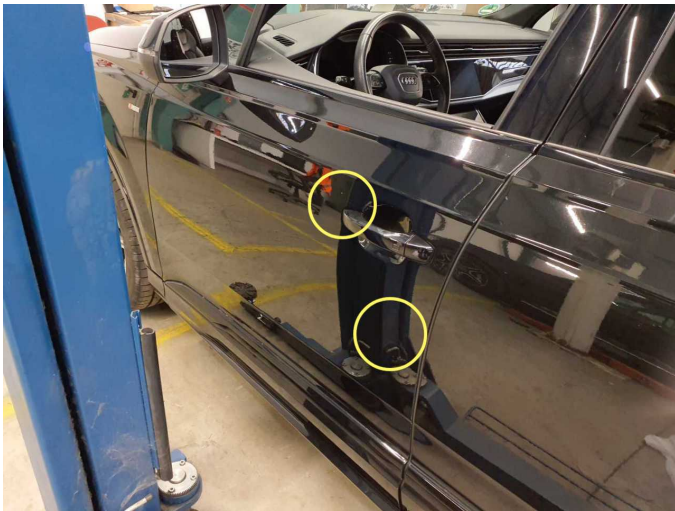
Damage 9: Front bumper: Front bumper - Scratched - Paint



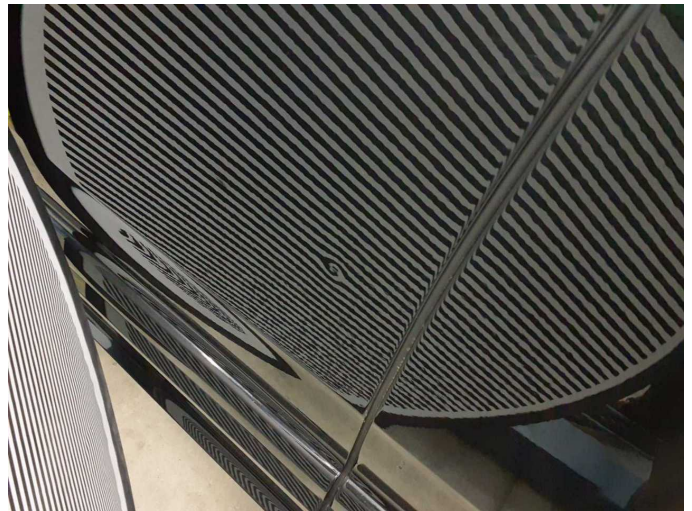
Damage 9: Front bumper: Front bumper - Scratched - Paint



Damage 9: Front bumper: Front bumper - Scratched - Paint



Damage 10: Door - front left side: Door - Dent / paintcoat damage - Repair and paint



Damage 10: Door - front left side: Door - Dent / paintcoat damage - Repair and paint



Damage 10: Door - front left side: Door - Dent / paintcoat damage - Repair and paint



Wartungshistorie

(gemäß Auftraggeber Informationen)

Fahrgestellnummer: WAUZZZ4M1ND003033

Hersteller / Modell: AUDI AUDI Q7 50 TDI quattro tiptronic S line

Datum	KM-Stand	Beschreibung
04.09.2024	23.445	AU; Motoröl b. Wartung; Ölwechsel; Systemtest/Eigendiagnose
08.09.2023	17.221	Bremsflüssigkeit; Bremsflüssigkeit ern; Motoröl b. Wartung; Ölfilter ern; Regelwartungsdienst; Wartung Sonstiges
01.10.2022	7.422	Motoröl b. Wartung; Ölwechsel