



AUDI A6
A6 Avant 2.0 TDI ultra S tronic

VIN NO WAUZZZ4G0HN034265
Registration Number G0HN034265



MOT Date	Number of Owners	Number of Keys	Odometer Reading
2026-11-01	3	2	163233 km
Last Service	Last Service Mileage	First Registration Date	Country First Registered
2024-10-07	152898	2016-10-10	Germany

Inspection Report Summary

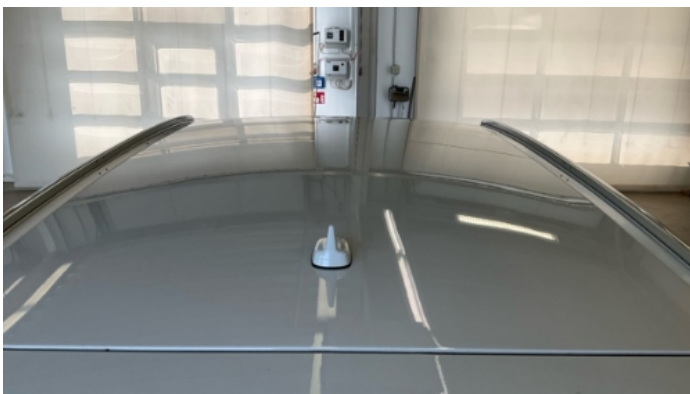
Customer	BCA Online	Report Number	P20250604100741
Inspection Date / Place	2025-06-04 / BCA Berlin	Cosmetic Grade	4

Vehicle Summary

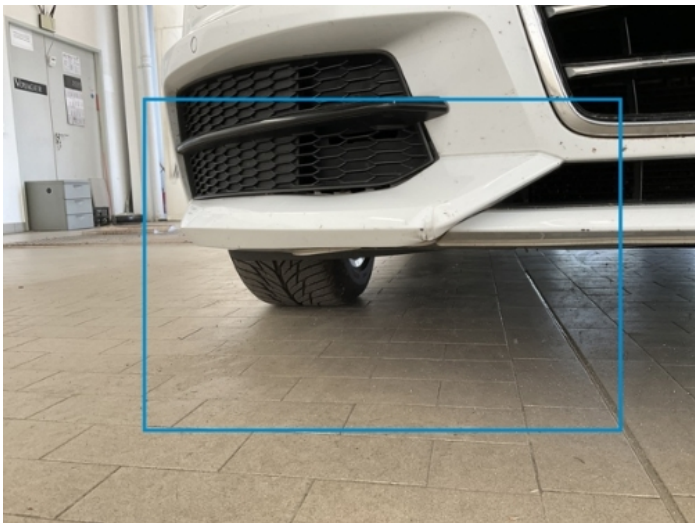
Vehicle Condition	Runner	VAT Type	Margin
Fuel Type	Diesel	Road Worthy	Unknown
Colour	White	Engine Size (cc)	1968
Engine Size	2.0	No of Doors	5
Body Type	Stationwagon / Estate	Drive Train	Front
Seat Colour		No of Seats	5
Seat Covering Name	Schwarz	Seat Covering	Cloth/Synthetic Leather
Charging Cables		NEDC CO2 Rating (q/km)	118
Gearbox Type	Automatic		

Vehicle History & Documents

Service Book Available	Present	Next Service Mileage	km
Previous Usage		Imported	No
Manufacturer Warrenty			







Equipment

Tinted Glass	Airbag Status	Anti-lock braking	Front parking sensors
Heated wing mirrors	Remote central locking	Satellite navigation	Xenon headlamps
Electrictailgate	Rear parking sensors	Trip Computer	Alloys wheels
Cruise control	Headlamp wash/wipe	Remote adjusting wing mirrors	Roof rails
Stability control	Electrically folding wing mirrors	Radio	

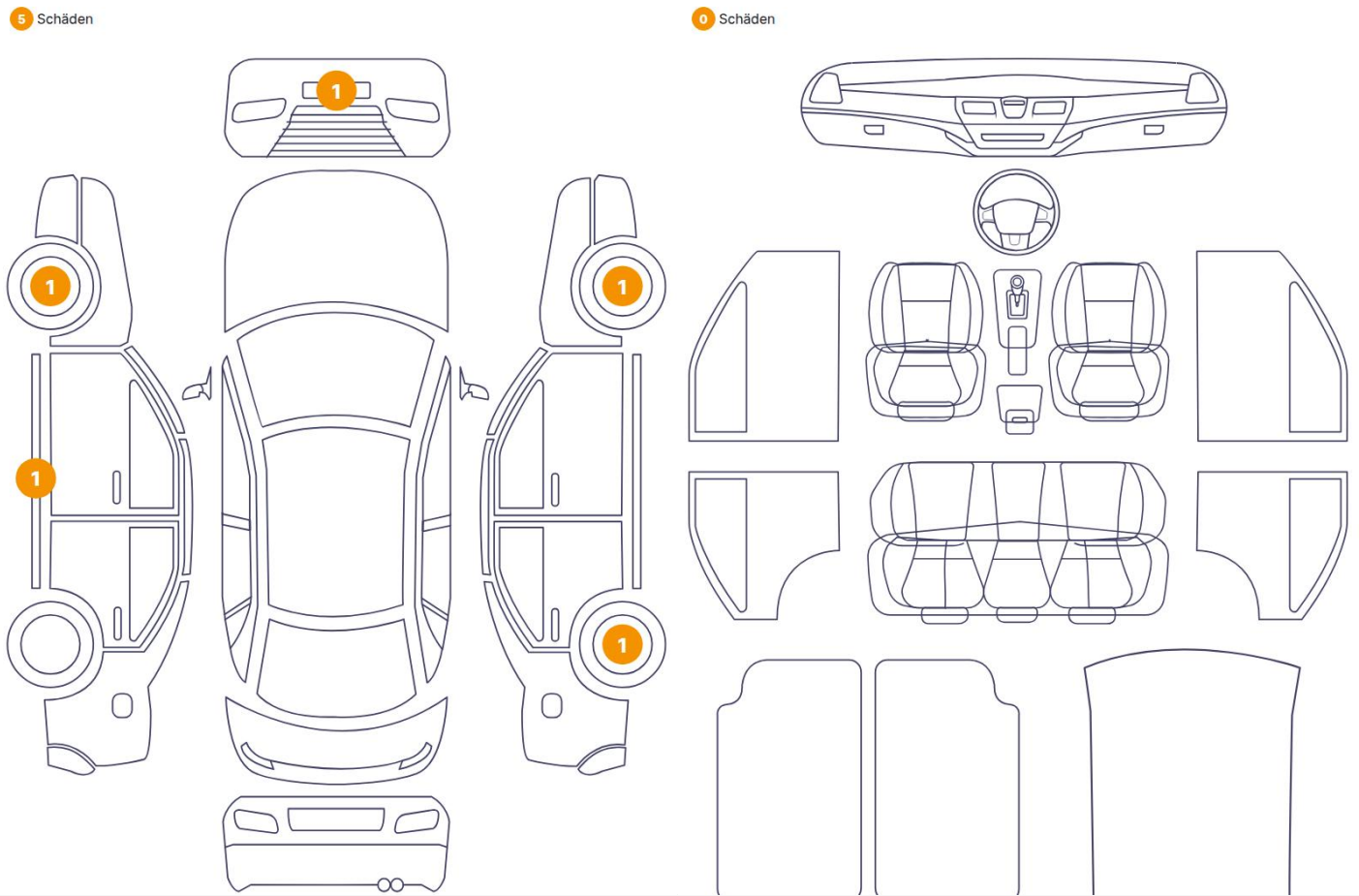
Equipment Details

Air Conditioning	Four Zone Climate Control	Alloy Wheel Size	17
Seat Heating	Front		

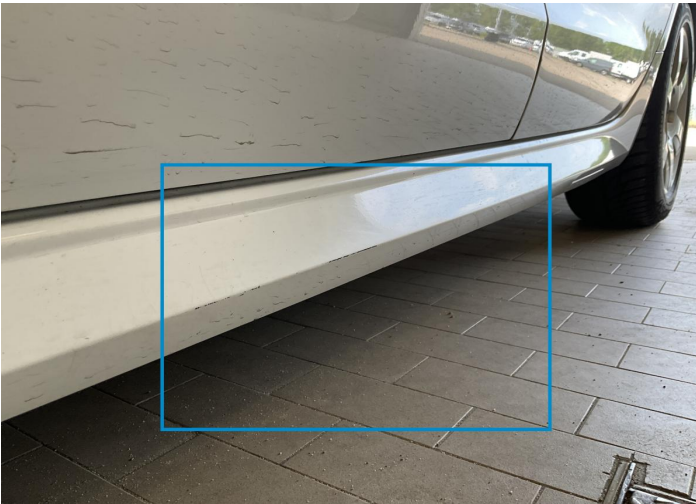
Wheels & Tyres

Right Front Tyre Depth	6	Left Front Tyre Depth	6
Right Rear Tyre Depth	5	Left Rear Tyre Depth	5

Cosmetic Damage



Component		Damage	Comments
1	Rocker Panel / Center Left	Paint / Scratch / Scuff	
2	Rim / Front Left	Out of Bodywork / Scratch	
3	Rim / Back Right	Out of Bodywork / Scratch	
4	Rim / Front Right	Out of Bodywork / Scratch	
5	Bumper / Front	Bodywork / Breakage / Crack	



1. Rocker Panel / Center Left
Paint / Scratch / Scuff -



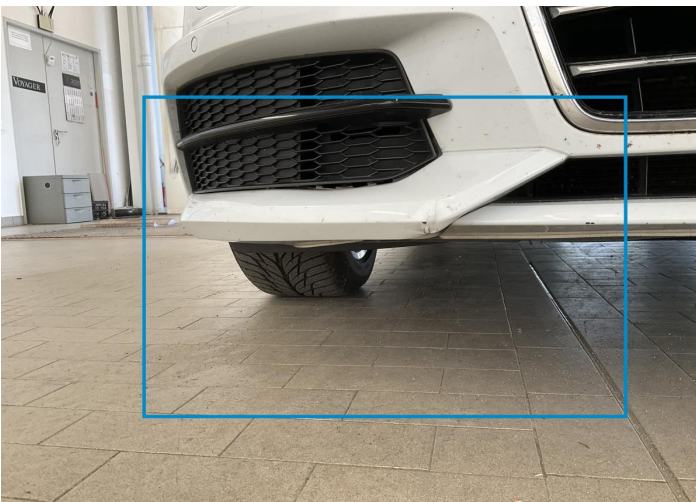
2. Rim / Front Left
Out of Bodywork / Scratch -



3. Rim / Back Right
Out of Bodywork / Scratch -



4. Rim / Front Right
Out of Bodywork / Scratch -



5. Bumper / Front
Bodywork / Breakage / Crack -

Mechanical Condition

Control Lights

Display Defect	✓	ABS Warning Light	✓
Airbag Warning Light	✓	Brake Warning Light	!
Power Steering Warning Light	✓	Alternator / Battery	✓
No Dashboard Lights	✓		

Engine

Engine Leak Visible	✓	Engine Starts	✓
Engine Status / EML	✓		

Levels

Coolant Fluid	✓	Brakes Fluid	✓
---------------	---	--------------	---

Equipments Test

Electric Windows	✓	Central Locking	✓
Audio Equipment	✓	Navigation System	✓
AC / Heating System	✓		

Gearbox

Gear Box	✓
----------	---

Test Drive Inspection

Engine			
Fume Quantity	✓	Engine Noise	✓
Power Loss	✓		
Steering Wheel			
Steering Noise / Anomaly	✓	Flywheel Noise	✓
Brake			
Brake System Anomaly	✓		
Gearbox			
Automatic Shift	✓		
✓ No troubles detected, good condition or correct tests, according to vehicle age and mileage			
! Damages or malfunction detected that requires repairs by the buyer			
NA Not applicable			
☐ Not tested			

Disclaimer

Please also note the "UserGuide condition report", which shows the scope of the vehicle description.

[User Guide](#)