



Expertise

Protocol number: 41596730
Order No. / Reference: 25218718
Inspection date: 18 Sept 2025

Manufacturer: Mercedes-Benz	Model: 317 CDI Sprinter Standard HA 9G-TRONIC
VIN: W1V9076331P437645	



Vehicle details	
Manufacturer / Type / Model / Equipment	
Mercedes-Benz 317 CDI Sprinter Standard HA 9G-TRONIC	
Vehicle Identification number	W1V9076331P437645
Mileage (Read)	64,076 km
First registration	3 Mar 2022
Number of holders	1
Next periodical technical inspection	02/2026
(Report on hand)	
Power / Engine displacement	125 kw / 1,950 ccm
Fuel type / Cylinder	Diesel / 4
Gearbox / Number of gears	Automatic / 9
Type of drive	Rear drive
Type of vehicle	Van
Colour / colour code	IRIDIUM SILBER
Doors / Seats	4 / 2
Upholstery type	Cloth
Colour of upholstery	Black
Re/Import	no
Driving readiness	Roadworthy



Vehicle details

Maintenance booklet / proof	digital proof / complete	Next maintenance in	83 Tag(e)
Last maintenance on / at	12/2023 at 33,078 km		
Key is / should be	2 / 2	FZG documents	ZB#2 (B) was available (copy), ZB#1 (S) was not available
		Letter No.	GH885136
Previous damage / Accident	None detectable	Repainting	None detectable
Inspection conditions	sufficient	Lifting equipment / pit	yes
Test drive	Not performed	Engine function test	Performed
Driving readiness	Roadworthy		
Manufacturer key number/ type code number	2222 / BBH 22068		
Emission standard	EUROVI; E; M, N	Fine dust sticker	
Permitted total weight	3,500 kg	Empty weight	

Tyres

Mounted tyres

#	Tyre size	Type of tyre	Manufacturer	Tread depth
1)	235/65 R16 115R	Summer tyres on Steel rim with wheel cover	Continental	4mm / 4mm
2)	235/65 R16 115R	Summer tyres on Steel rim with wheel cover	Continental	6mm / 6mm

Additional tyres

#	Tyre size	Type of tyre	Manufacturer	Tread depth
1)	235/65 R16 115R	Winter tyres on Steel	Pirelli	6mm / 6mm
2)	235/65 R16 115R	Winter tyres on Steel	Pirelli	6mm / 6mm

Replacement

Typ	Tyre size	Type of tyre	Manufacturer	Tread depth
E	235/65 R16 115R C	Summer tyres on Light alloy	Continental	8 mm

Legend: Tread depth information for tires on the left is in the first place, for tires on the right is in the second place on the axle in the direction of travel

Equipment

Standard equipment

- | | |
|--|--|
| <ul style="list-style-type: none"> • Storage above windshield • Rear towing eye • ADAPTIVE ESP (latest generation) with load and speed-dependent driving dynamics control • Outside temperature display • Battery: fleece battery 12 V / 92 Ah • Brake light, third • COC papers • tachometer • Driving light assistant • Generator 14 V / 200 A • Transmission: 9G-TRONIC • Grab handle for loading compartment sliding door on partition wall • Instrument panel and instrument cluster with various storage options • Headrests (2), front • Headlight range adjustment • Without loading/unloading 3,500 kg • Upholstery: Cloth • Radio: Preparation for digital radio DAB • Tires: Tires without specification make • Tires: Premium Protection Tires (3 years) • Wheels: steel rims 6.5 J x 16 • Crosswind Assist • Seats: Armrest passenger seat • Seats: Adjustable passenger seat • Start-stop function • Partition wall continuous • Lashing eyes • Warning triangle • Heat-insulating glass • Approval N1 | <ul style="list-style-type: none"> • Storage compartment under cockpit • Axle ratio $i = 3.923$ • Driver's side airbag • Exterior mirrors electrically adjustable and heated, left and right • Hill start assist • Brake lights, adaptive • Diesel particulate filter and SCR • Entry handle on corner pillar rear right • Electric window lifters for driver and passenger doors • Noise measures • Seat belt warning device for driver's seat • Main tank 71 liters • HOLD function • KEYLESS start • Child safety locks on passenger compartment doors • Steering wheel adjustable in tilt and height • Mercedes-Benz emergency call system • Breakdown management • Radio: Radio preparation • Radio accessories: Communication module (LTE) for digital services • Tires: Summer tires • Sliding door right loading/passenger compartment • Power steering • Seats: Driver's seat armrest • Seats: Driver's seat • Speedometer km/h • first aid kit • Pre-installation for Remote Services Plus • Immobiliser • Central locking with radio remote control • Registration certificate, part II |
|--|--|

Extra equipment

- | | |
|---|---|
| <ul style="list-style-type: none"> • Distance Assistant DISTRONIC active • Electrically folding exterior mirrors • Brake Assist, active • Ceiling light in the cargo/passenger compartment (with door contact) • Front right window fixed in SW/loading compartment sliding door • Main tank 93 liters • Interior lining of cargo area up to roof height (wood) • Instrument cluster with color display • Paint finish: metallic • leather steering wheel • Cable duct on side wall • Marker lights, side | <ul style="list-style-type: none"> • Entrance rear wall door • Reference mass at least 2611 kg required • tinted glass in the rear, black glass • Digital operating instructions • Chassis stabilization level I • Fire extinguisher • Seat belt warning device for front passenger seat • Wooden floor (cargo area) • Air conditioning controlled Tempmatic • Grille frame in body color • LED light strip in the cargo area • Cable duct on rear portal • Steering wheel: multifunction steering wheel |
|---|---|



- Navigation (LINGUATRONIC voice control, Wi-Fi hotspot, multimedia connection unit for connecting portable devices via an additional USB-C interface, center-fill speaker for improved sound and voice output, improved hands-free function, two-phone operation, digital operating instructions)
- Navigation accessories: Live Traffic Information
- Navigation: 3 years of free map data updates
- Fog lights with cornering light
- Package: Parking package with 360° camera (Parking Assistant Rear Cross Traffic Alert Drive Away Assist)
- Spare wheel
- Rear door with two leaves, opening to the side wall
- Seats: Suspension seat comfort version, driver's seat
- USB 5 V socket
- Wheel chock
- Heat-insulating glass with band filter on the windscreen
- MBUX multimedia system with 7-inch touchscreen (high-resolution 7-inch touchscreen (960 x 540 pixels), AM/FM radio with dual tuner, Bluetooth connectivity with audio streaming and hands-free function, smartphone integration via Android Auto or Apple CarPlay, multimedia connection unit for connecting portable devices via a USB-C interface, 4 x 25 W output power, tone adjustment, separate volume control for audio and telephone, 2-way front speakers)
- Package: Acoustics in conjunction with MBUX
- Radio: Digital Radio DAB
- Tires: Continental tire brand
- Spare wheel holder with jack (under frame end)
- Seats: Driver's seat box, low
- Seat heating on driver's side
- Partition wall with 1 window
- Additional hot water heating (5 kW)

Brief expert findings

Documents submitted	At the time of the inspection, the registration certificate Part 2 (letter) was available, but the registration certificate Part 1 (certificate) was not. (Copy)
VIN comparison	The vehicle identification number (VIN) was read from the vehicle and its conformity with the submitted documents was verified during the inspection by the undersigned.
Inspection	The inspection conditions were sufficient for the assessment of the vehicle. Lifting equipment and a pit were available for examining the vehicle.
Test drive	No test drive/maneuvering was carried out during the inspection of the vehicle.
Engine function test	An engine test run was performed.
Driving readiness	The vehicle was drivable at the time of inspection.

Value reducing factors

No.	Component group	Description
1	Sliding door, right	Sliding door - dent(s) - Smooth repair work
2	Body	Body - Glued / labelled - De-glue / neutralise
3	Sill - right side	Sill - Damaged - Repair and paint
4	Boot lid / rear door	Rear door - left side - Dent / paintcoat damage - Repair and paint

Wear and tear

No.	Component group	Description
1	Front bumper	Front bumper - Stone chips - No deduction
2	Vehicle glazing	Windscreen - Stone chips - No deduction
3	Rear of vehicle	Foot plate - Scratch(es) - No deduction
4	Bonnet	Bonnet - Stone chips - No deduction
5	Door - front right side	Door (Ganz feine) - dent(s) - No deduction

The vehicle shows signs of wear commensurate with its age and use.



Order/Scope of order

The order was placed to prepare a sales report for the vehicle described. This includes the following:

- Description of core relevant information about the vehicle
- Documentation of equipment features
(Delivery by third-party service providers)
- Documentation of damage, defects, missing parts
- Documentation of previous damage, unrepaired previous damage, repainting
- a brief visual or functional inspection of the equipment details if possible.
(Functional tests of driver assistance systems are not included in the scope of services!)
- a photo documentation of the vehicle

Basis for the order

This product is based on the Alphabet Fuhrpark GmbH guidelines for vehicle returns and valuations. The expert makes the explicit findings in each individual case objectively within the framework of the specified standards based on his or her own expertise.

The vehicle inspection takes place in a disassembled state.

Damage or defects that can only be detected during disassembly/diagnosis work or through advanced knowledge remain within the scope of the prognosis risk. An extended risk exists for concealed defects caused by fraudulent deception and not identifiable by the expert.

Damage or defects resulting from normal use or wear and tear of the vehicle will be accepted according to the applicable standard.

There was no explicit identification or monetary consideration of the expected features within the product.

Features which in their nature and severity slightly exceed normal use but do not constitute unacceptable damage will be documented and identified under signs of use if necessary.

Damage or defects which, according to the underlying standard, can no longer be attributed to normal use or wear and tear are listed in the product under "Depreciating Factors".

Depending on the product specification, a monetary ID can be provided. If this takes place, the costs can be 100% d or pro rata depending on the vehicle's age and mileage.

Previous damages

Apparently, no repaired previous damage could be found on the vehicle.

Comments

- Winterradsatz ist kein Bestandteil des Auslieferungsumfangs.



Figure 1: Diagonal front (left)



Figure 2: Diagonal front (right)



Figure 3: Diagonal rear (left)



Figure 4: Diagonal rear (right)



Figure 5: Interior - front



Figure 6: Interior - rear



Figure 7: Instrument cluster



Figure 8: Instrument panel



Figure 9: Interior 360° view ([Online link](#))



Figure 10: Cargo area



Figure 11: VIN



Figure 12: Mounted tyres



Figure 13: Documents

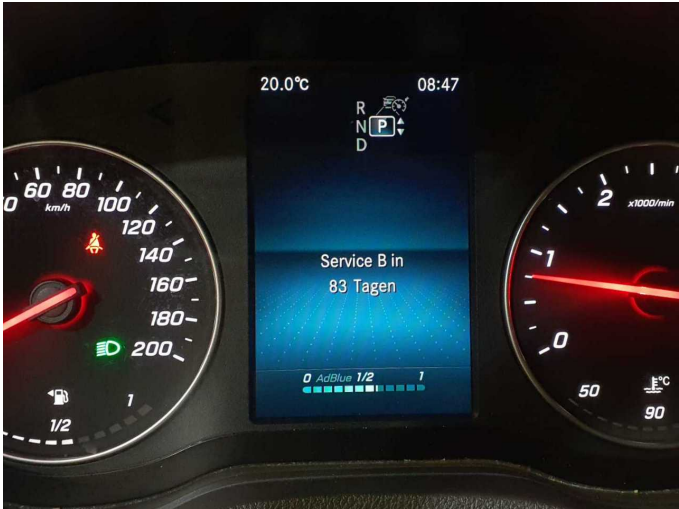


Figure 14: Documents



Figure 15: Additional tyres



Figure 16: Navigation



Figure 17: Misc.



Figure 18: Misc.



Figure 19: Misc.



Figure 20: Misc.



Figure 21: Misc.



Figure 22: Misc.



Figure 23: Misc.



Figure 24: Misc.



Figure 25: Misc.



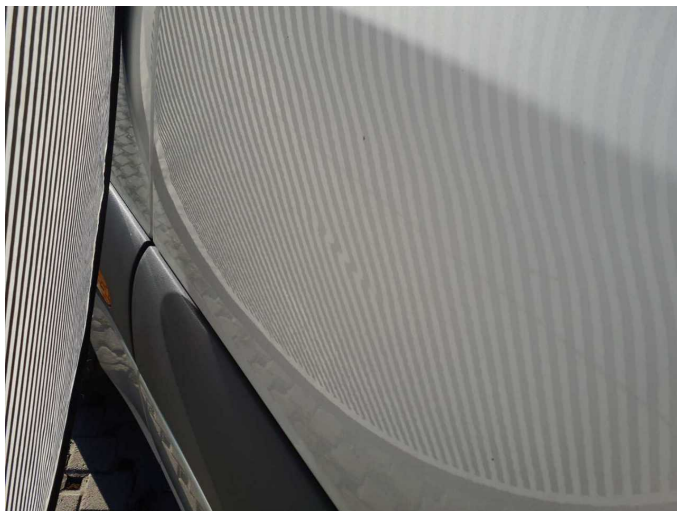
Figure 26: Misc.



Figure 27: Misc.



Damage 1: Sliding door, right: Sliding door - dent(s) - Smooth repair work



Damage 1: Sliding door, right: Sliding door - dent(s) - Smooth repair work



Damage 2: Body: Body - Glued / labelled - De-glue / neutralise



Damage 2: Body: Body - Glued / labelled - De-glue / neutralise



Damage 3: Sill - right side: Sill - Damaged - Repair and paint



Damage 3: Sill - right side: Sill - Damaged - Repair and paint



Damage 3: Sill - right side: Sill - Damaged - Repair and paint



Damage 3: Sill - right side: Sill - Damaged - Repair and paint



Damage 4: Boot lid / rear door: Rear door - left side - Dent / paintcoat damage - Repair and paint



Damage 4: Boot lid / rear door: Rear door - left side - Dent / paintcoat damage - Repair and paint



Damage 4: Boot lid / rear door: Rear door - left side - Dent / paintcoat damage - Repair and paint



Wartungshistorie

(gemäß Auftraggeber Informationen)

Fahrgestellnummer: W1V9076331P437645

Hersteller / Modell: MERCEDES-BENZ MB 317 CDI Sprinter Standard HA 9G-Tronic

Datum	KM-Stand	Beschreibung
12.03.2025	56.869	Bremsscheiben+Beläge v+h
23.02.2024	36.540	AU
05.12.2023	33.078	Regelwartungsdienst