



Expertise

Protocol number: 41567253
Order No. / Reference: 25232949
Inspection date: 15 Sept 2025

Manufacturer: Mercedes-Benz
VIN: W1V9076331P268061

Model: 319 CDI Sprinter Standard HA



Vehicle details	
Manufacturer / Type / Model / Equipment	
Mercedes-Benz 319 CDI Sprinter Standard HA	
Vehicle Identification number	W1V9076331P268061
Mileage (Read)	76,019 km
First registration	25 Aug 2020
Number of holders	1
Next periodical technical inspection	09/2026
(Report not on hand)	
Power / Engine displacement	140 kw / 2,987 ccm
Fuel type / Cylinder	Diesel / 6
Gearbox / Number of gears	Automatic / 8
Type of drive	Rear drive
Type of vehicle	Van
Colour / colour code	Jupiterrot
Doors / Seats	4 / 2
Upholstery type	Cloth
Colour of upholstery	Black



Vehicle details

Maintenance booklet / proof	digital proof / complete	Next maintenance in	377 Tag(e)
Last maintenance on / at	09/2024 at 59,547 km		
Key is / should be	2 / 2	FZG documents	ZB#2 (B) was available (copy), ZB#1 (S) was not available
		Letter No.	FV150311
Previous damage / Accident	None detectable	Repainting	None detectable
Inspection conditions	sufficient	Lifting equipment / pit	yes
Test drive	Not performed	Engine function test	Performed
Manufacturer key number/ type code number	2222 / ARM 05535		
Emission standard	EUROVI; D; M, N	Fine dust sticker	
Permitted total weight	3,500 kg	Empty weight	

Tyres

Mounted tyres

#	Tyre size	Type of tyre	Manufacturer	Tread depth
1)	235/65 R16 113R	Winter tyres on Steel rim with wheel cover	Continental	6mm / 6mm
2)	235/65 R16 113R	Winter tyres on Steel rim with wheel cover	Goodyear	5mm / 5mm

Additional tyres

#	Tyre size	Type of tyre	Manufacturer	Tread depth
1)	235/65 R16 113R	Summer tyres on Steel	Continental	5mm / 5mm
2)	235/65 R16 113R	Summer tyres on Steel	Continental	5mm / 5mm

Replacement

Typ	Tyre size	Type of tyre	Manufacturer	Tread depth
E	235/65 R16 113R C	Summer tyres on Steel	Continental	8 mm

Legend: Tread depth information for tires on the left is in the first place, for tires on the right is in the second place on the axle in the direction of travel

Equipment

Standard equipment

- Storage above windshield
- Rear towing eye
- Driver's side airbag
- Exterior mirrors electrically adjustable and heated, left and right
- Battery: fleece battery 12 V / 92 Ah
- Brake lights, adaptive
- tachometer
- Driving light assistant
- Generator 14 V / 200 A
- Seat belt warning device for driver's seat
- Main tank 71 liters
- Instrument panel and instrument cluster with various storage options
- Communication module (LTE) for digital services
- Paint finish: Solid paint
- Headlight range adjustment
- Breakdown management
- Radio: Radio preparation
- Wheels: steel rims 6.5 J x 16
- Crosswind Assist
- Seats: Armrest passenger seat
- Seats: Adjustable passenger seat
- Daytime running light
- Doors: Rear doors Double door opening 180 degrees in two height versions
- Warning triangle
- Heat-insulating glass
- Approval N1
- Storage compartment under cockpit
- ADAPTIVE ESP (latest generation) with load and speed-dependent driving dynamics control
- Outside temperature display
- Battery: fleece battery 12 V / 70 Ah
- Brake light, third
- Diesel particulate filter and SCR
- Entry handle on corner pillar rear right
- Electric window lifters for driver and passenger doors
- Transmission: 6-speed manual
- Grab handle for loading compartment sliding door on partition wall
- KEYLESS start
- Child safety locks on passenger compartment doors
- Headrests (2), front
- Steering wheel adjustable in tilt and height
- Mercedes-Benz emergency call system
- Upholstery: Cloth
- Radio: Preparation for digital radio DAB
- Sliding door on the right side
- Power steering
- Seats: Driver's seat armrest
- Start-stop function
- Partition wall continuous
- first aid kit
- Lashing eyes
- Immobiliser
- Central locking with radio remote control

Extra equipment

- Storage for smartphones including wireless charging
- Storage compartment with net in rear doors
- Airbag: Windowbag for driver and front passenger
- Trailer coupling (fixed ball head)
- ATTENTION ASSIST (ATTENTION ASSIST can support the driver during long, monotonous journeys by monitoring attention. If signs of fatigue or increasing inattention are detected, it suggests a break.)
- Brakes: Electric parking brake
- Ceiling light in the cargo/passenger compartment (with door contact)
- Window in rear revolving door in conjunction with tinted glazing or rear window heated
- High beam assistant
- Grab handle for inside seat on two-seater
- Rear lights with partial LED technology
- Wooden floor (cargo area)
- Interior lining of cargo area up to roof height (wood)
- Hinged lid for storage compartment
- Coat hooks in the driver's cab
- Storage above roof panel
- Passenger side airbag
- Active Lane Keeping Assist
- 13-pin trailer socket
- Electrically folding exterior mirrors
- Tachograph operation at the front under the headliner
- Hill start assist
- Brake Assist, active
- tinted glass in the rear, black glass
- Electrics for trailer socket
- Chassis stabilization level II
- Front right window fixed in SW/loading compartment sliding door
- Seat belt warning device for front passenger seat
- Main tank 93 liters
- Heated rear window
- Interior mirror
- Intelligent Tachograph EU
- Hinged lid for storage compartments left and right



- Instrument cluster with color display
- Grille frame in body color
- LED high-performance headlights in conjunction with rear lights in partial LED technology
- Cable duct on side wall
- MBUX multimedia system with 7-inch touchscreen (high-resolution 7-inch touchscreen (960 x 540 pixels), AM/FM radio with dual tuner, Bluetooth connectivity with audio streaming and hands-free function, smartphone integration via Android Auto or Apple CarPlay, multimedia connection unit for connecting portable devices via a USB-C interface, 4 x 25 W output power, tone adjustment, separate volume control for audio and telephone, 2-way front speakers)
- Package: Parking package with rear view camera
- Radio: Digital Radio DAB
- Rain sensor
- Tires: Continental tire brand
- Spare wheel
- Spare wheel holder with jack (under frame end)
- Rear door with two leaves, opening to the side wall
- Passenger-optimized gearshift console
- Key: Multi-button radio remote control
- Seats: armrest, driver and passenger doors
- Seats: Driver's seat box, low
- Seats: Lumbar support for driver's seat
- Seat heating on passenger side
- Cruise control
- Partition wall with 1 window
- warning light
- Long-throw nozzles in I-board
- Heated windshield
- Air conditioning controlled Tempmatic
- Comfort roof control unit
- Load securing: lashing rails side wall on parapet belt
- LED light strip in the cargo area
- Cable duct on rear portal
- Steering wheel: multifunction steering wheel
- Navigation (LINGUATRONIC voice control, Wi-Fi hotspot, multimedia connection unit for connecting portable devices via an additional USB-C interface, center-fill speaker for improved sound and voice output, improved hands-free function, two-phone operation, digital operating instructions)
- Fog lights with cornering light
- Package: Acoustics in conjunction with MBUX
- Package: Instrument panel charging package in conjunction with MBUX (The charging package expands the charging options in the cockpit with two 5V USB-C ports and a 12V socket. One USB port and the 12V socket are installed in the center storage compartment of the instrument panel, and another USB port is located in the lower section of the center console. This allows charging of electrical devices such as mobile phones within easy reach of the driver and front passenger.)
- Vibration damper
- Seats: Passenger seat two-seater
- Seats: Comfort headrest driver
- Seats: Suspension seat comfort version, driver's seat
- Seat heating on driver's side
- Blind Spot Assist
- Traffic Sign Assistant
- Elimination of vehicle lowering
- Wet Wiper System
- Heat-insulating glass with band filter on the windscreen

Brief expert findings

Documents submitted	At the time of the inspection, the registration certificate Part 2 (letter) was available, but the registration certificate Part 1 (certificate) was not. (Copy)
VIN comparison	The vehicle identification number (VIN) was read from the vehicle and its conformity with the submitted documents was verified during the inspection by the undersigned.
Inspection	The inspection conditions were sufficient for the assessment of the vehicle. Lifting equipment and a pit were available for examining the vehicle.
Test drive	No test drive/maneuvering was carried out during the inspection of the vehicle.
Engine function test	An engine test run was performed.

Value reducing factors

No.	Component group	Description
1	Misc.	Main inspection - No evidence - No deduction
2	Sliding door, right	Sliding door with glass panel - dent(s) - Smooth repair work
3	Mudguard - right side	Mudguard - right side - dent(s) - Smooth repair work
4	Door - front right side	Door - Scratched - Smart repair
5	Body	Body (Ausgeblichen) - Paint defect - Conditioning



Order/Scope of order

The order was placed to prepare a sales report for the vehicle described. This includes the following:

- Description of core relevant information about the vehicle
- Documentation of equipment features
(Delivery by third-party service providers)
- Documentation of damage, defects, missing parts
- Documentation of previous damage, unrepaired previous damage, repainting
- a brief visual or functional inspection of the equipment details if possible.
(Functional tests of driver assistance systems are not included in the scope of services!)
- a photo documentation of the vehicle

Basis for the order

This product is based on the guidelines for vehicle returns and valuations of light commercial vehicles from Alphabet Fuhrparkmanagement GmbH. The expert makes the explicit findings in each individual case objectively within the framework of the specified standards based on his or her own expertise.

The vehicle inspection takes place in a disassembled state.

Damage or defects that can only be detected during disassembly/diagnosis work or through advanced knowledge remain within the scope of the prognosis risk. An extended risk exists for concealed defects caused by fraudulent deception and not identifiable by the expert.

Damage or defects resulting from normal use or wear and tear of the vehicle will be accepted according to the applicable standard.

There was no explicit identification or monetary consideration of the expected features within the product.

Features which in their nature and severity slightly exceed normal use but do not constitute unacceptable damage will be documented and identified under signs of use if necessary.

Damage or defects which, according to the underlying standard, can no longer be attributed to normal use or wear and tear are listed in the product under "Depreciating Factors".

Depending on the product specification, a monetary ID can be provided. If this takes place, the costs can be 100% d or pro rata depending on the vehicle's age and mileage.

Previous damages

Apparently, no repaired previous damage could be found on the vehicle.

Comments

Sollte beim aufbereiten der Lack keinen Glanz bekommen-können Mehrkosten entstehen.



Figure 1: Diagonal front (left)



Figure 2: Diagonal front (right)



Figure 3: Diagonal rear (left)



Figure 4: Diagonal rear (right)



Figure 5: Interior - front



Figure 6: Interior - rear



Figure 7: Instrument cluster



Figure 8: Instrument panel



Figure 9: Interior 360° view ([Online link](#))

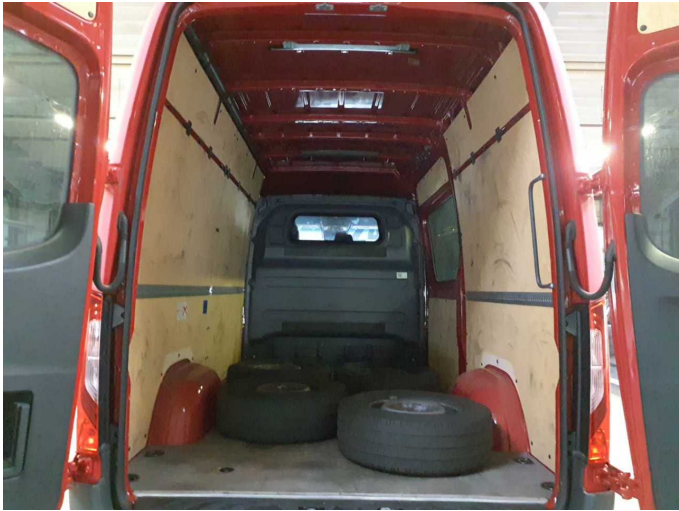


Figure 10: Cargo area



Figure 11: VIN



Figure 12: Mounted tyres



Figure 13: Documents



Figure 14: Additional tyres



Figure 15: Navigation



Figure 16: Misc.



Figure 17: Misc.



Figure 18: Misc.



Figure 19: Misc.



Figure 20: Misc.



Figure 21: Misc.



Figure 22: Misc.



Figure 23: Misc.



Figure 24: Misc.



Figure 25: Misc.



Figure 26: Misc.



Figure 27: Misc.



Figure 28: Misc.



Figure 29: Misc.



Figure 30: Misc.



Figure 31: Misc.

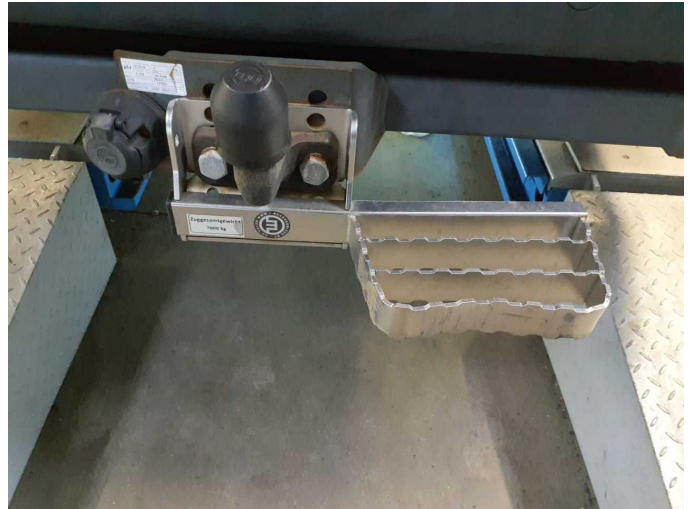


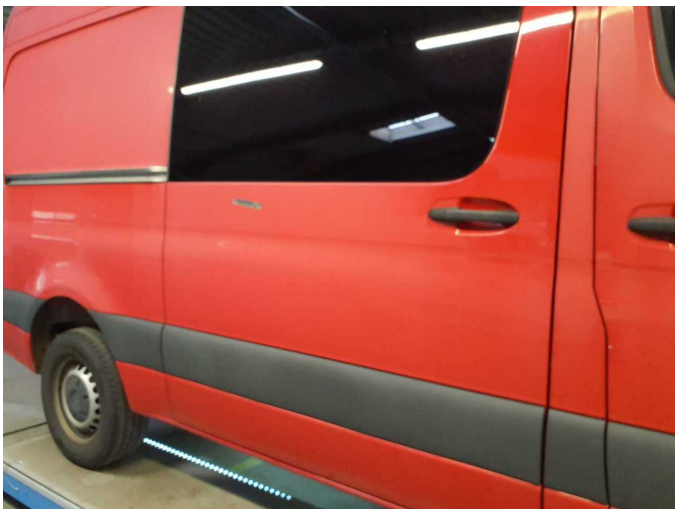
Figure 32: Misc.



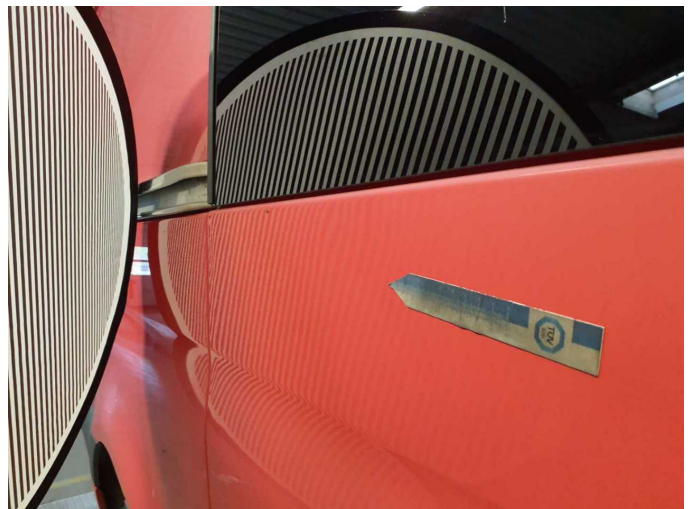
Figure 33: Misc.



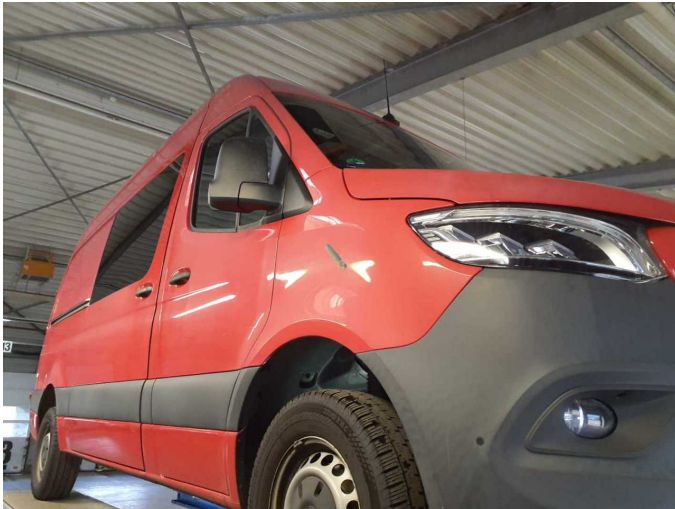
Figure 34: Misc.



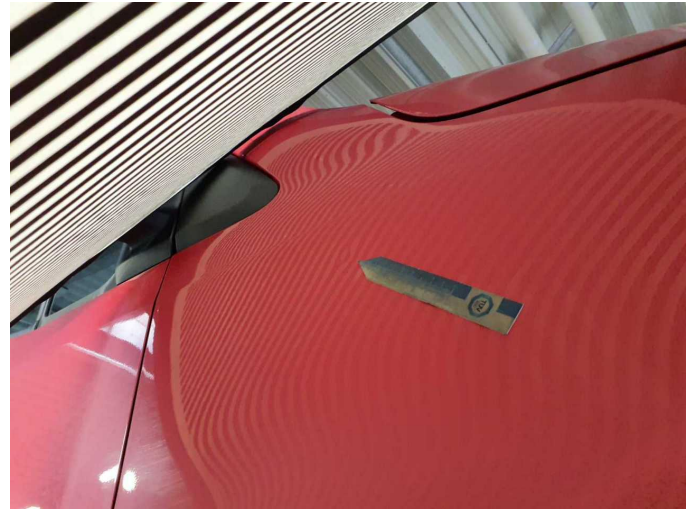
Damage 2: Sliding door, right: Sliding door with glass panel - dent(s) - Smooth repair work



Damage 2: Sliding door, right: Sliding door with glass panel - dent(s) - Smooth repair work



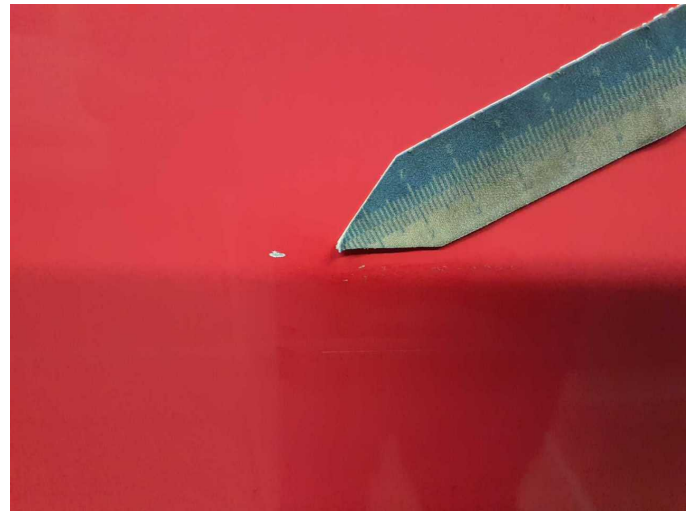
Damage 3: Mudguard - right side: Mudguard - right side - dent(s) - Smooth repair work



Damage 3: Mudguard - right side: Mudguard - right side - dent(s) - Smooth repair work



Damage 4: Door - front right side: Door - Scratched - Smart repair



Damage 4: Door - front right side: Door - Scratched - Smart repair



Damage 4: Door - front right side: Door - Scratched - Smart repair



Damage 5: Body: Body (Ausgeblichen) - Paint defect - Conditioning



Damage 5: Body: Body (Ausgeblichen) - Paint defect - Conditioning



Wartungshistorie

(gemäß Auftraggeber Informationen)

Fahrgestellnummer: W1V9076331P268061

Hersteller / Modell: MERCEDES-BENZ MB 319 CDI Sprinter Standard HA

Datum	KM-Stand	Beschreibung
26.09.2024	69.547	HU + AU; Regelwartungsdienst; Reparatur Sonstiges
02.09.2024	67.865	Bremsscheiben vorne
11.08.2022	40.004	HU + AU; Regelwartungsdienst