



MERCEDES-BENZ V-Klasse
V 300 d lang 9G-TRONIC

VIN NO W1V44781313840893
Registration Number 1313840893



MOT Date	Number of Owners	Number of Keys	Odometer Reading
2026-04-01	2	1	69943 km
Last Service	Last Service Mileage	First Registration Date	Country First Registered
-	-	2021-02-12	Germany

Inspection Report Summary

Customer	BCA Online	Report Number	P20250812131824
Inspection Date / Place	2025-08-12 / BCA Berlin	Cosmetic Grade	4

Vehicle Summary

Vehicle Condition	Runner	VAT Type	Qualifying
Fuel Type	Diesel	Road Worthy	Unknown
Colour	White	Engine Size (cc)	1950
Engine Size	2.0	No of Doors	4
Body Type	Stationwagon / Estate	Drive Train	Rear
Seat Colour	Beige	No of Seats	6
Seat Covering Name	Beige	Seat Covering	Synthetic Leather
Charging Cables		NEDC CO2 Rating (q/km)	157
Gearbox Type	Automatic		

Vehicle History & Documents

Service Book Available	Missing	Next Service Mileage	km
Previous Usage		Imported	No
Manufacturer Warrenty			







Equipment

Tinted Glass	Airbag Status	Ambientlighting	Cabin Pre Heating
Digital Radio	Remote adjusting wing mirrors	Reversing Camera	Satellite navigation
Stability control	Electrically adjustable seats	Electrictailgate	Radio
Tow ball	Alloys wheels	Anti-lock braking	Cruise control
Front parking sensors	Remote central locking	Roof rails	Seatventilation
Sunroof	Electrically folding wing mirrors	LED Headlamps	Rear parking sensors

Equipment Details

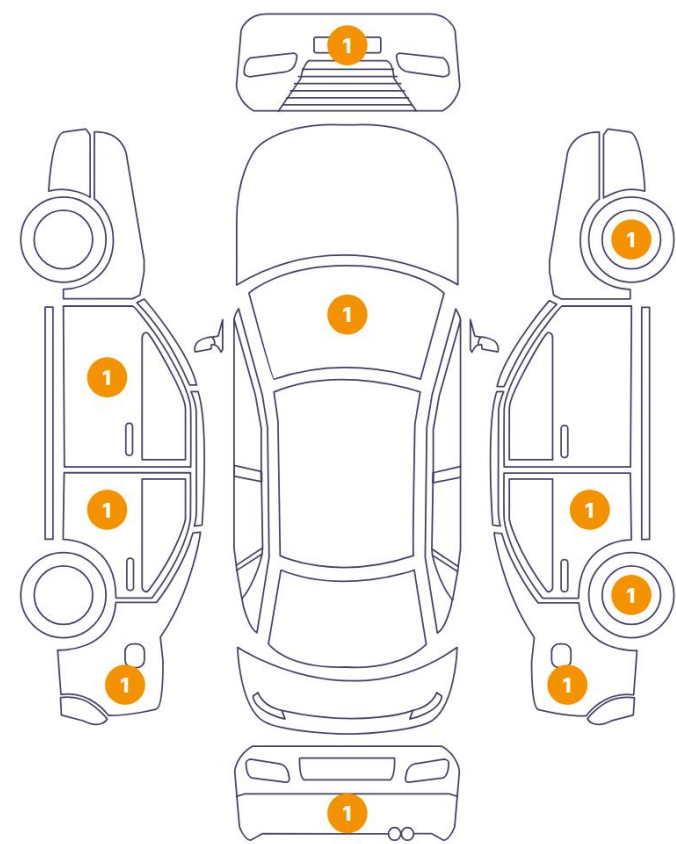
Tow Ball Type	Detachable	Air Conditioning	Three Zone Climate Control
Alloy Wheel Size	19	Seat Heating	Front
Sunroof Type	Tilt/Slide Glass		

Wheels & Tyres

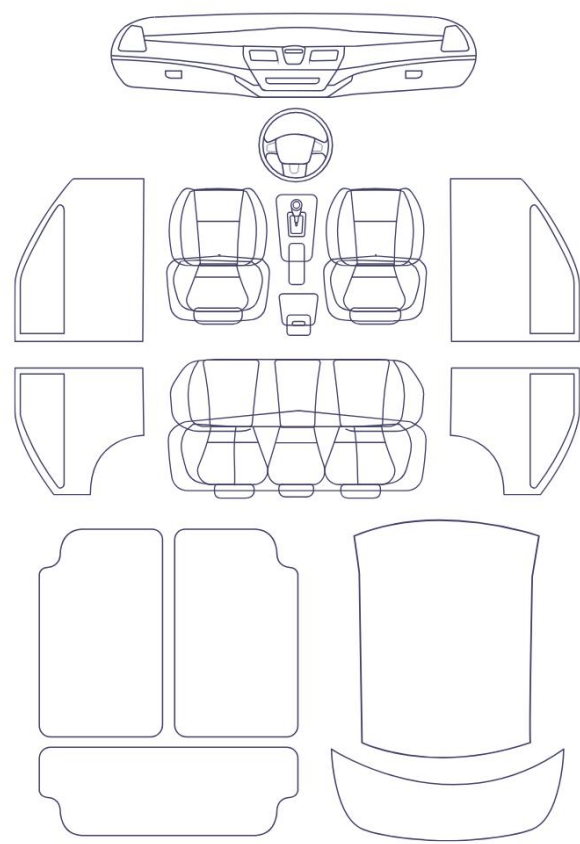
Right Front Tyre Depth	6	Left Front Tyre Depth	5
Right Rear Tyre Depth	5	Left Rear Tyre Depth	5

Cosmetic Damage

10 Schäden



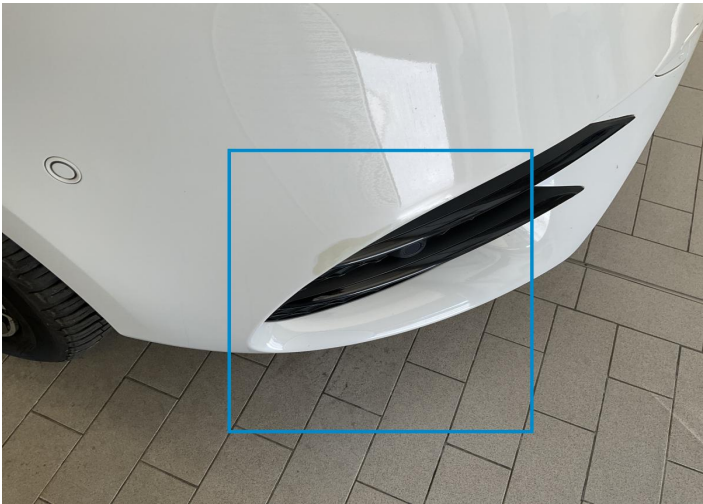
0 Schäden



Component		Damage	Comments
1	Door / Back Left	Paint / Scratch / Scuff	
2	Bumper / Front	Paint / Scratch / Scuff	
3	Rim / Front Right	Out of Bodywork / Scratch	
4	Rim / Back Right	Out of Bodywork / Scratch	
5	Door / Back Right	Bodywork / Dent / Dent	
6	Side Panel / Back Right	Paint / Scratch / Scuff	
7	Bumper / Back	Paint / Scratch / Scuff	
8	Side Panel / Back Left	Paint / Poor Previous Repair	
9	Door / Front Left	Bodywork / Dent / Dent	
10	Windshield / Front	Glass Break / Impact	



1. Door / Back Left
Paint / Scratch / Scuff -



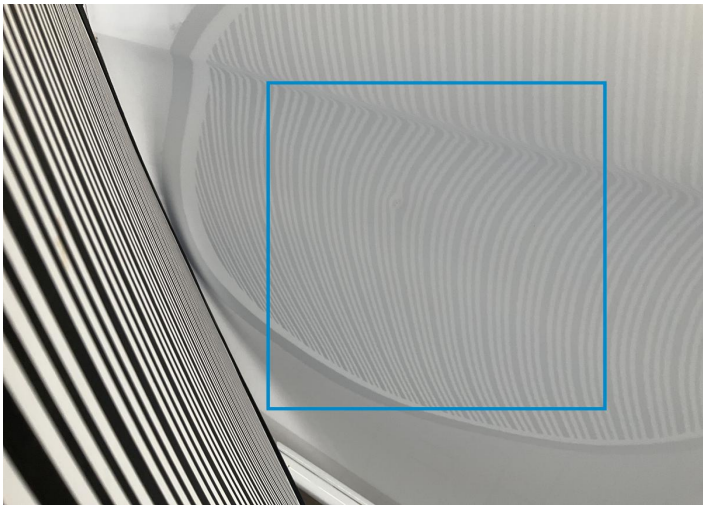
2. Bumper / Front
Paint / Scratch / Scuff -



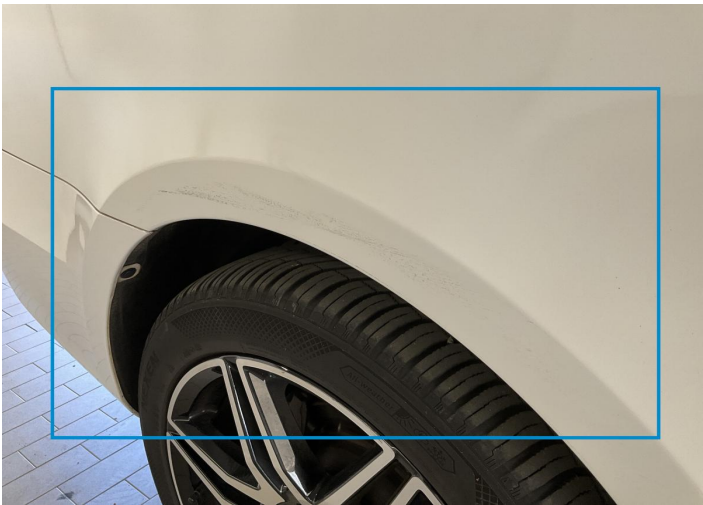
3. Rim / Front Right
Out of Bodywork / Scratch -



4. Rim / Back Right
Out of Bodywork / Scratch -



5. Door / Back Right
Bodywork / Dent / Dent -



6. Side Panel / Back Right
Paint / Scratch / Scuff -



7. Bumper / Back
Paint / Scratch / Scuff -



8. Side Panel / Back Left
Paint / Poor Previous Repair -



9. Door / Front Left
Bodywork / Dent / Dent -



10. Windshield / Front
Glass Break / Impact -

Mechanical Condition

Control Lights

Display Defect	✓	ABS Warning Light	✓
ESP Fault/Traction Control Malfunction Light	✓	Airbag Warning Light	✓
Oil Pressure Warning Light	✓	Brake Warning Light	✓
Power Steering Warning Light	✓	Alternator / Battery	✓
No Dashboard Lights	✓	Tire Pressure Monitoring System	✓

Equipments Test

Main & Spare Keys Functioning	✓	Electric Windows	✓
Navigation System	✓	Audio Equipment	✓
Parking Sensors / Cameras Functioning	✓	AC / Heating System	✓
Other Equipments	✓		

Engine

Engine Status / EML	✓	Engine Leak Visible	✓
Engine Starts	✓		

Levels

Brakes Fluid	✓	Coolant Fluid	✓
--------------	---	---------------	---

Test Drive Inspection

Steering Wheel			
Steering Noise / Anomaly		✓	
Engine			
Engine Noise	✓	The Gears Scratch / Skip / Abnormal Operation	✓
Fume Quantity	✓	Power Loss	✓
Brake			
Brake System Anomaly		✓	
General			
Test Driven Status		✓	
✓ <i>No troubles detected, good condition or correct tests, according to vehicle age and mileage</i>			
! <i>Damages or malfunction detected that requires repairs by the buyer</i>			
NA <i>Not applicable</i>			
= <i>Not tested</i>			

Disclaimer

Please also note the "UserGuide condition report", which shows the scope of the vehicle description.

[User Guide](#)