



Expertise

Protocol number: 41569589
Order No. / Reference: 25214327
Inspection date: 17 Sept 2025

Manufacturer: Mercedes-Benz
VIN: W1V44760314135856

Model: Vito 114 CDI Lang HA Aut. PRO



Vehicle details	
Manufacturer / Type / Model / Equipment	
Mercedes-Benz Vito 114 CDI Lang HA Aut. PRO	
Vehicle Identification number	W1V44760314135856
Mileage (Read)	78,959 km
First registration	19 Aug 2022
Number of holders	1
Next periodical technical inspection	09/2026
(Report on hand)	
Power / Engine displacement	100 kw / 1,950 ccm
Fuel type / Cylinder	Diesel / 4
Gearbox / Number of gears	Automatic / 9
Type of drive	Rear drive
Type of vehicle	Van
Colour / colour code	ARKTIKWEISS
Doors / Seats	4 / 3
Upholstery type	Cloth
Colour of upholstery	Black-Anthracite



Vehicle details

Maintenance booklet / proof	digital proof / complete	Next maintenance in	800 km
Last maintenance on / at	01/2024 at 39,785 km		
Key is / should be	2 / 2	FZG documents	ZB#2 (B) was available (copy), ZB#1 (S) was not available
		Letter No.	GM190390
Previous damage / Accident	None detectable	Repainting	None detectable
Inspection conditions	sufficient	Lifting equipment / pit	yes
Test drive	Not performed	Engine function test	Performed
Manufacturer key number/ type code number	2222 / BBI 05320		
Emission standard	EURO6;WLTP;AR;PI/CI;N1 III, N2	Fine dust sticker	
Permitted total weight	2,800 kg	Empty weight	

Tyres

Mounted tyres

#	Tyre size	Type of tyre	Manufacturer	Tread depth
1)	225/55 R17 109H	Summer tyres on Steel rim with wheel cover	Dunlop	5mm / 5mm
2)	225/55 R17 109H	Summer tyres on Steel rim with wheel cover	Dunlop	6mm / 6mm

Additional tyres

#	Tyre size	Type of tyre	Manufacturer	Tread depth
1)	225/55 R17 109T	Winter tyres on Steel	Continental	5mm / 5mm
2)	225/55 R17 109T	Winter tyres on Steel	Continental	6mm / 6mm

Replacement

Typ	Tyre size	Type of tyre	Manufacturer	Tread depth
E	225/55 R17 109H C	Summer tyres on Steel	Continental	8 mm

Legend: Tread depth information for tires on the left is in the first place, for tires on the right is in the second place on the axle in the direction of travel

Equipment

Standard equipment

- | | |
|--|---|
| <ul style="list-style-type: none"> • Towing eye screwable front/rear • Driver's side airbag • Exterior mirrors electrically adjustable and heated, left and right • Battery: fleece battery 12 V / 92 Ah • Hill start assist • Brake lights, adaptive • Cup holder front • diesel particulate filter • Entry grab handle for sliding cargo door • Electronic Stability Program (ADAPTIVE ESP) with integrated anti-lock braking system (ABS) • Vehicle HVO capable • Parking brake • Generator management • Transmission: 9G-TRONIC • Seat belt warning device for front passenger seat • Lockable glove box • Boot lid • Air conditioning controlled Tempmatic • Communication module (LTE) for digital services • Paint finish: Solid paint • Headlight range adjustment • Multifunctional steering wheel • Package: BlueEFFICIENCY • Upholstery: Caluma black fabric • Radio: Digital Radio DAB • Tires: 195/65 R 16 • Tires: Premium Protection Tires (3 years) • Wheels: steel rims 6.5 J x 16 • Sliding door right loading/passenger compartment • Crosswind Assist • Seat: Lumbar support driver's seat • Seats: Driver's seat Plus with flat seat surface • Start-stop function • Cruise control • first aid kit • Warning triangle • Immobiliser • Central locking with radio remote control • Registration certificate, part II | <ul style="list-style-type: none"> • Passenger side airbag • ATTENTION ASSIST • Outside temperature display • Battery: buffer battery for starting process • Attachment points in the roof frame • Brake light, third • COC papers • Comfort roof control unit • Electronic tachometer • Electrics for trailer socket • Driving light assistant • Chassis: Basic chassis • Electric window lifter driver/passenger • Generator 14 V / 250 A • Speed limit 210 km/h • Weight variant 2,800 kg • Seat belt warning device for driver's seat • Main tank 57 liters • Interior trim of cargo area, side • Instrument cluster with pixel matrix display • Headrests (2), front • Steering wheel adjustable in tilt and height • Mercedes-Benz emergency call system • Fog lights halogen • Breakdown management • Radio/Telematics, Audio 10 • Full wheel cover • Tires: Tires without specification make • Tires: Summer tires • Headlights: halogen technology • Key: 3-button radio remote control • Electromechanical power steering • Seats: Adjustable passenger seat • Seats: Comfort driver's seat • 12V socket • Partition wall continuous • Pre-installation for Remote Services Plus • Maintenance interval display >>ASSYST< • Heat-insulating glass all around • Registration as a truck |
|--|---|

Extra equipment

- | | |
|--|--|
| <ul style="list-style-type: none"> • Trailer coupling (fixed ball head) • Grab handle for driver and passenger entry • Navigation accessories: Live Traffic Information • Tires: 225/55R17 • Tires: M + S 225/55 R 17 | <ul style="list-style-type: none"> • Loading/unloading (load increase to 3.05 t GVW) • LED light strip in the cargo area • Parktronic (PARKTRONIC supports the driver when parking and maneuvering with visual and acoustic warning signals) • Wheels: steel rims 6.5 J x 17 |
|--|--|



- | | |
|---|---|
| <ul style="list-style-type: none"> • Spare wheel under the rear of the vehicle with a jack • Rear door double-leaf 180° without window • Seat heating on passenger side • Elimination of rear lettering | <ul style="list-style-type: none"> • Seats: Passenger seat two-seater • Seat heating on driver's side • Sortimo fittings |
|---|---|

Brief expert findings

Documents submitted	At the time of the inspection, the registration certificate Part 2 (letter) was available, but the registration certificate Part 1 (certificate) was not. (Copy)
VIN comparison	The vehicle identification number (VIN) was read from the vehicle and its conformity with the submitted documents was verified during the inspection by the undersigned.
Inspection	The inspection conditions were sufficient for the assessment of the vehicle. Lifting equipment and a pit were available for examining the vehicle.
Test drive	No test drive/maneuvering was carried out during the inspection of the vehicle.
Engine function test	An engine test run was performed.

Value reducing factors

No.	Component group	Description
1	Roof	Roof (2x) - dent(s) - Smooth repair work
2	Body	Body - Glued / labelled - De-glue / neutralise
3	Boot lid / rear door	Rear door - right side - Dent / paintcoat damage - Repair and paint
4	Door - front right side	Door - Dent / paintcoat damage - Repair and paint
5	Vehicle glazing	Windscreen - Broken / torn - Replace

Wear and tear

No.	Component group	Description
1	Rear bumper	Rear bumper (unpainted) - Scratch(es) - No deduction
2	Front bumper	Front bumper (unpainted) - Scratch(es) - No deduction
3	Bonnet	Bonnet - Stone chips - No deduction
4	Door - front left side	Door - Scratch(es) - No deduction
5	Wing mirror - left side	Cap - Scratch(es) - No deduction

The vehicle shows signs of wear commensurate with its age and use.

Order/Scope of order

The order was placed to prepare a sales report for the vehicle described. This includes the following:

- Description of core relevant information about the vehicle
- Documentation of equipment features
(Delivery by third-party service providers)
- Documentation of damage, defects, missing parts
- Documentation of previous damage, unrepaired previous damage, repainting
- a brief visual or functional inspection of the equipment details if possible.
(Functional tests of driver assistance systems are not included in the scope of services!)
- a photo documentation of the vehicle



Basis for the order

This product is based on the guidelines for vehicle returns and valuations of light commercial vehicles from Alphabet Fuhrparkmanagement GmbH. The expert makes the explicit findings in each individual case objectively within the framework of the specified standards based on his or her own expertise.

The vehicle inspection takes place in a disassembled state.

Damage or defects that can only be detected during disassembly/diagnosis work or through advanced knowledge remain within the scope of the prognosis risk. An extended risk exists for concealed defects caused by fraudulent deception and not identifiable by the expert.

Damage or defects resulting from normal use or wear and tear of the vehicle will be accepted according to the applicable standard.

There was no explicit identification or monetary consideration of the expected features within the product.

Features which in their nature and severity slightly exceed normal use but do not constitute unacceptable damage will be documented and identified under signs of use if necessary.

Damage or defects which, according to the underlying standard, can no longer be attributed to normal use or wear and tear are listed in the product under "Depreciating Factors".

Depending on the product specification, a monetary ID can be provided. If this takes place, the costs can be 100% d or pro rata depending on the vehicle's age and mileage.

Previous damages

Apparently, no repaired previous damage could be found on the vehicle.



Figure 1: Diagonal front (left)



Figure 2: Diagonal front (right)



Figure 3: Diagonal rear (left)



Figure 4: Diagonal rear (right)



Figure 5: Interior - front



Figure 6: Interior - rear



Figure 7: Instrument cluster



Figure 8: Instrument panel



Figure 9: Interior 360° view ([Online link](#))



Figure 10: Cargo area



Figure 11: VIN



Figure 12: Mounted tyres



Figure 13: Documents



Figure 14: Documents



Figure 15: Additional tyres



Figure 16: Navigation



Figure 17: Misc.



Figure 18: Misc.



Figure 19: Misc.



Figure 20: Misc.

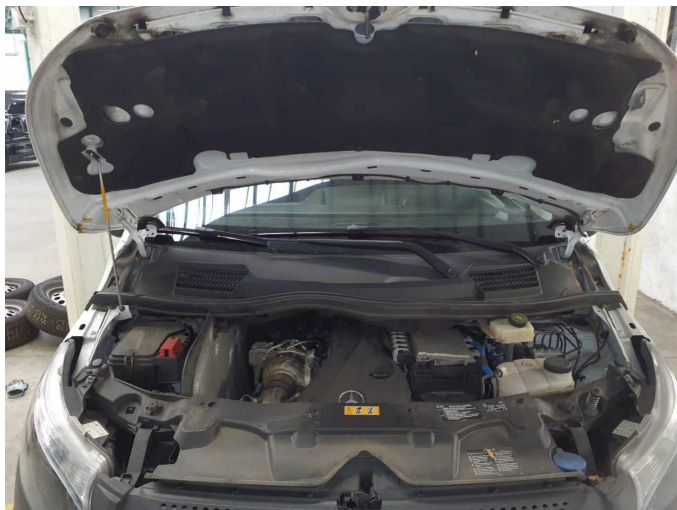


Figure 21: Misc.

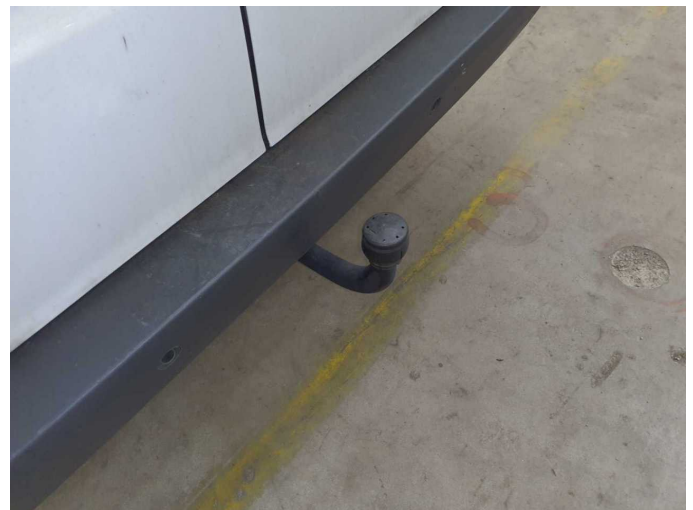


Figure 22: Misc.



Figure 23: Misc.



Figure 24: Misc.



Figure 25: Misc.



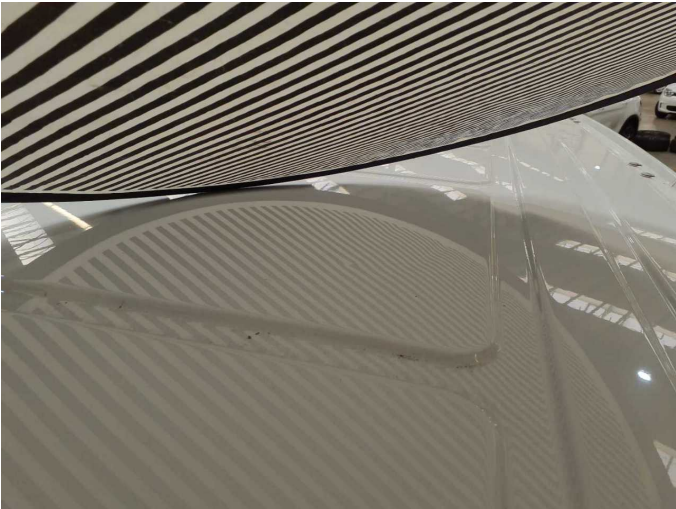
Figure 26: Misc.



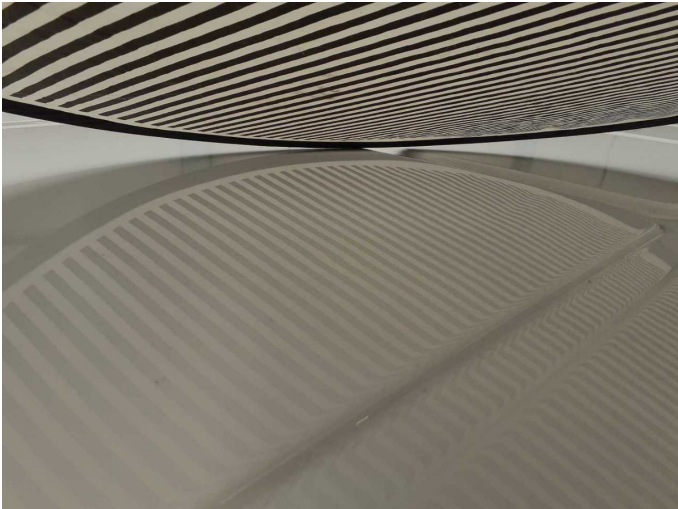
Figure 27: Misc.



Damage 1: Roof: Roof (2x) - dent(s) - Smooth repair work



Damage 1: Roof: Roof (2x) - dent(s) - Smooth repair work



Damage 1: Roof: Roof (2x) - dent(s) - Smooth repair work



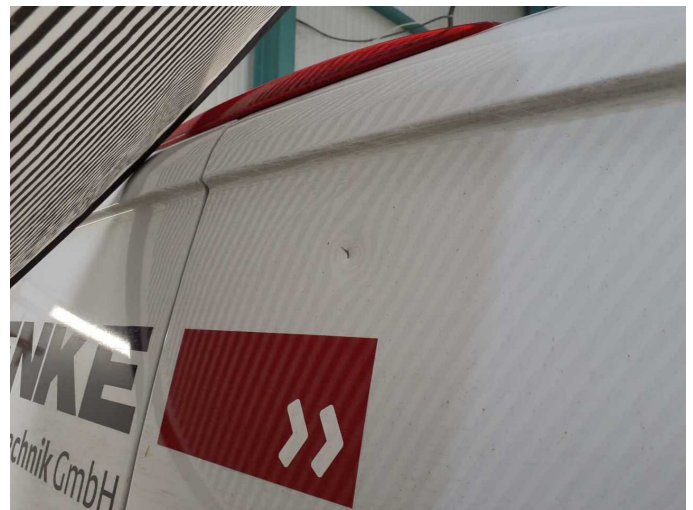
Damage 2: Body: Body - Glued / labelled - De-glue / neutralise



Damage 2: Body: Body - Glued / labelled - De-glue / neutralise



Damage 3: Boot lid / rear door: Rear door - right side - Dent / paintcoat damage - Repair and paint



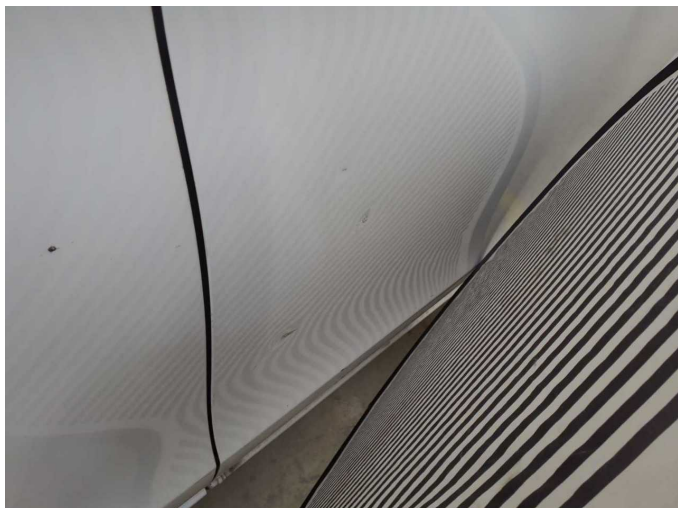
Damage 3: Boot lid / rear door: Rear door - right side - Dent / paintcoat damage - Repair and paint



Damage 3: Boot lid / rear door: Rear door - right side - Dent / paintcoat damage - Repair and paint



Damage 4: Door - front right side: Door - Dent / paintcoat damage - Repair and paint



Damage 4: Door - front right side: Door - Dent / paintcoat damage - Repair and paint



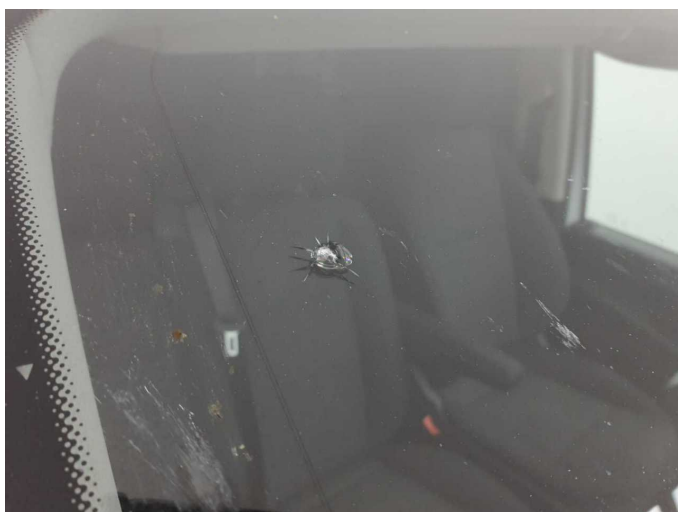
Damage 4: Door - front right side: Door - Dent / paintcoat damage - Repair and paint



Damage 4: Door - front right side: Door - Dent / paintcoat damage - Repair and paint



Damage 5: Vehicle glazing: Windscreen - Broken / torn - Replace



Damage 5: Vehicle glazing: Windscreen - Broken / torn - Replace



Wartungshistorie

(gemäß Auftraggeber Informationen)

Fahrgestellnummer: W1V44760314135856

Hersteller / Modell: MERCEDES-BENZ MB Vito 114 CDI Lang HA Aut. PRO

Datum	KM-Stand	Beschreibung
05.03.2025	69.259	Bremsscheiben+Beläge v+h
26.09.2024	58.986	AU
29.01.2024	39.785	Regelwartungsdienst