



Expertise

Protocol number: 41410844
Order No. / Reference: 25158883
Inspection date: 4 Sept 2025

Manufacturer: Mercedes-Benz

Model: Vito 116 CDI Kastenwagen Lang HA Aut. BASE

VIN: W1V44760313850666



Vehicle details	
Manufacturer / Type / Model / Equipment	
Mercedes-Benz Vito 116 CDI Kastenwagen Lang HA Aut. BASE	
Vehicle Identification number	W1V44760313850666
Mileage (Read)	247,399 km
First registration	1 Apr 2021
Number of holders	1
Power / Engine displacement	120 kw / 1,950 ccm
Fuel type / Cylinder	Diesel / 4
Gearbox / Number of gears	Automatic / 9
Type of drive	Rear drive
Type of vehicle	Van
Colour / colour code	HYAZINTHBLAU Uni
Doors / Seats	4 / 2
Upholstery type	Cloth
Colour of upholstery	Black



Vehicle details

Maintenance booklet / proof	digital proof / complete	Next maintenance in	531 Tag(e)
Last maintenance on / at	08/2024 at 190,332 km		
Key is / should be	2 / 2	FZG documents	ZB#2 (B) was available (copy), ZB#1 (S) was not available
		Letter No.	FZ382536
Previous damage / Accident	Detectable	Repainting	None detectable
Inspection conditions	sufficient	Lifting equipment / pit	yes
Test drive	Not performed	Engine function test	Performed
Manufacturer key number/ type code number	2222 / BBJ 00631		
Emission standard	EURO6;WLTP;CI;PI/CI;N1 III, N2	Fine dust sticker	
Permitted total weight	3,050 kg	Empty weight	

Tyres

Mounted tyres

#	Tyre size	Type of tyre	Manufacturer	Tread depth
1)	205/65 R16 107T	Summer tyres on Steel rim with wheel cover	Dunlop	7mm / 7mm
2)	205/65 R16 107T	Summer tyres on Steel rim with wheel cover	Dunlop	7mm / 7mm

Additional tyres

#	Tyre size	Type of tyre	Manufacturer	Tread depth
1)	205/65 R16 107T	Winter tyres on Steel	Goodyear	6mm / 6mm
2)	205/65 R16 107T	Winter tyres on Steel	Goodyear	6mm / 6mm

Replacement

Typ	Tyre size	Type of tyre	Manufacturer	Tread depth
E	205/65 R16 107T C	Summer tyres on Steel	Continental	10 mm

Legend: Tread depth information for tyres on the left is in the first place, for tyres on the right is in the second place on the axle in the direction of travel

Equipment

Standard equipment

- | | |
|--|---|
| <ul style="list-style-type: none"> • Towing eye screwable front/rear • Driver's side airbag • Exterior mirrors, manually adjustable (2) • Battery: buffer battery for starting process • Attachment points in the roof frame • Brake light, third • COC papers • diesel particulate filter • Electronic Stability Program (ADAPTIVE ESP) with integrated anti-lock braking system (ABS) • Generator management • Transmission: 9G-TRONIC • Seat belt warning device for front passenger seat • Lockable glove box • Boot lid • Interior trim of cargo area, side • Communication module (LTE) for digital services • Paint finish: Solid paint • Headlight range adjustment • Multifunctional steering wheel • Upholstery: Caluma black fabric • Tires: Premium Protection Tires (3 years) • Wheels: steel rims 6.5 J x 16 • Electromechanical power steering • Seats: Driver's seat • 12V socket • Partition wall continuous • Pre-installation for Remote Services Plus • Immobiliser • Central locking with radio remote control | <ul style="list-style-type: none"> • Passenger side airbag • ATTENTION ASSIST • Outside temperature display • Battery: fleece battery 12 V / 92 Ah • Hill start assist • Brake lights, adaptive • Cup holder front • Electronic tachometer • Electric window lifter driver/passenger • Generator 14 V / 200 A • Speed limit 210 km/h • Weight variant 2,800 kg • Seat belt warning device for driver's seat • Main tank 57 liters • HOLD function • Instrument cluster with pixel matrix display • Headrests (2), front • Steering wheel adjustable in tilt and height • Mercedes-Benz emergency call system • Breakdown management • Tires: 205/65 R 16 • Tires: Summer tires • Key: 3-button radio remote control • Seats: Adjustable passenger seat • Start-stop function • Cruise control • first aid kit • Warning triangle • Heat-insulating glass all around • Registration as a truck |
|--|---|

Extra equipment

- | | |
|--|---|
| <ul style="list-style-type: none"> • Loading/unloading (load increase to 3.05 t GVW) • Comfort roof control unit • Double cup holder in the center of the cockpit • Fire extinguisher 1 kg • Rear camera not foldable • Comfort locking system with IR remote control (comfort opening and closing) • leather steering wheel • Navigation accessories: Live Traffic Information • Package: Smoker's package • Radio/Navi: Multimedia radio and navigation system "Audio 40" (7-inch LCD touchscreen - DAB Digital Radio - Apple CarPlay and Android Auto - Bluetooth 3.0 - Hands-free system - Live Traffic Information - 2-way front speakers) • Weld nuts side panel for extensions | <ul style="list-style-type: none"> • Exterior mirrors electrically adjustable and heated, left and right • Driving light assistant (automatic switching on of driving lights) • Air conditioning controlled Tempmatic • Large fuel tank, approx. 70 liters • LED light strip in the cargo area • Center console with storage compartment • Package: Driving Assistance Package (Blind Spot Assist - Lane Keeping Assist - COLLISION PREVENTION ASSIST) • Radio: Digital Radio DAB • Radio: Radio Generation 2 • Rain sensor • Spare wheel under the rear of the vehicle with a jack • Rear view camera, high resolution, with orientation lines • Seat: Lumbar support driver's seat • Seats: Comfort driver's seat |
|--|---|



- Seats: Comfort passenger seat
 - Sun visor, driver/passenger side, mirror illuminated
 - Windshield washer fluid level warning light
 - Elimination of rear lettering
 - Bott installation
- Lane Keeping Assist (including instrument cluster with pixel matrix display)
 - Auxiliary heating (hot water) (including instrument cluster with pixel matrix display)

Brief expert findings

Documents submitted	At the time of the inspection, the registration certificate Part 2 (letter) was available, but the registration certificate Part 1 (certificate) was not. (Copy)
VIN comparison	The vehicle identification number (VIN) was read from the vehicle and its conformity with the submitted documents was verified during the inspection by the undersigned.
Inspection	The inspection conditions were sufficient for the assessment of the vehicle. Lifting equipment and a pit were available for examining the vehicle.
Test drive	No test drive/maneuvering was carried out during the inspection of the vehicle.
Engine function test	An engine test run was performed.

Value reducing factors

No.	Component group	Description
1	Front bumper	Front bumper (unpainted) - Scratch(es) - Loss in value
2	Bonnet	Bonnet - Corrosion - Repair and paint

Wear and tear

No.	Component group	Description
1	Interior	Sun visor - left side (Zusätzlich verschmutzt) - Scratch(es) - No deduction
2	Body	B-pillar - left side - Scratch(es) - No deduction
3	Roof	Roof - dent(s) - No deduction
4	Roof	Roof (Dachkante) - Stone chips - No deduction
5	Vehicle glazing	Windscreen - Stone chips - No deduction
6	Headlight	Headlight - right side - Stone chips - No deduction
7	Headlight	Headlight - left side - Stone chips - No deduction
8	Rear bumper	Rear bumper (unpainted) - Scratch(es) - No deduction
9	Boot lid / rear door	Boot lid - Dent / paintcoat damage - No deduction
10	Steering system	Steering wheel - Soiled - No deduction

The vehicle shows signs of wear commensurate with its age and use.

Previous damages

No.	Previous damage	Extent of damage (Net)
1	Front, Side right, Provided by user / customer, from 5 Aug 2021	7.919,87 €



Order/Scope of order

The order was placed to prepare a sales report for the vehicle described. This includes the following:

- Description of core relevant information about the vehicle
- Documentation of equipment features
(Delivery by third-party service providers)
- Documentation of damage, defects, missing parts
- Documentation of previous damage, unrepaired previous damage, repainting
- a brief visual or functional inspection of the equipment details if possible.
(Functional tests of driver assistance systems are not included in the scope of services!)
- a photo documentation of the vehicle

Basis for the order

This product is based on the guidelines for vehicle returns and valuations of light commercial vehicles from Alphabet Fuhrparkmanagement GmbH. The expert makes the explicit findings in each individual case objectively within the framework of the specified standards based on his or her own expertise.

The vehicle inspection takes place in a disassembled state.

Damage or defects that can only be detected during disassembly/diagnosis work or through advanced knowledge remain within the scope of the prognosis risk. An extended risk exists for concealed defects caused by fraudulent deception and not identifiable by the expert.

Damage or defects resulting from normal use or wear and tear of the vehicle will be accepted according to the applicable standard.

There was no explicit identification or monetary consideration of the expected features within the product.

Features which in their nature and severity slightly exceed normal use but do not constitute unacceptable damage will be documented and identified under signs of use if necessary.

Damage or defects which, according to the underlying standard, can no longer be attributed to normal use or wear and tear are listed in the product under "Depreciating Factors".

Depending on the product specification, a monetary ID can be provided. If this takes place, the costs can be 100% d or pro rata depending on the vehicle's age and mileage.

Previous damages

According to available information previous damages were repaired at the vehicle. Traces of repairs, which allow conclusions about the area of repair, were not recognizable during the inspection.

Comments

- Winterradsatz ist kein Bestandteil des Auslieferungsumfangs



Figure 1: Diagonal front (left)



Figure 2: Diagonal front (right)



Figure 3: Diagonal rear (left)



Figure 4: Diagonal rear (right)



Figure 5: Interior - front



Figure 6: Interior - rear



Figure 7: Instrument cluster



Figure 8: Instrument panel



Figure 9: Interior 360° view



Figure 10: Cargo area



Figure 11: VIN



Figure 12: Mounted tyres



Figure 13: Documents



Figure 14: Additional tyres



Figure 15: Navigation



Figure 16: Misc.



Figure 17: Misc.



Figure 18: Misc.



Figure 19: Misc.



Figure 20: Misc.



Figure 21: Misc.



Figure 22: Misc.



Figure 23: Misc.



Damage 1: Front bumper: Front bumper (unpainted) - Scratch(es) - Loss in value



Damage 1: Front bumper: Front bumper (unpainted) - Scratch(es) - Loss in value



Damage 1: Front bumper: Front bumper (unpainted) - Scratch(es) - Loss in value



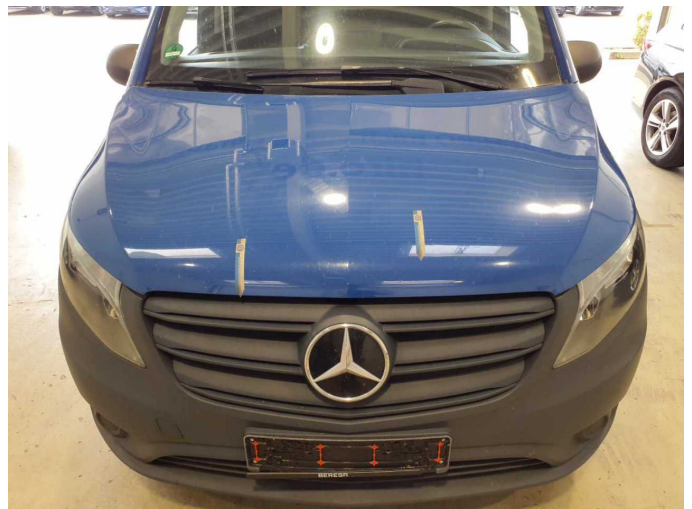
Damage 1: Front bumper: Front bumper (unpainted) - Scratch(es) - Loss in value



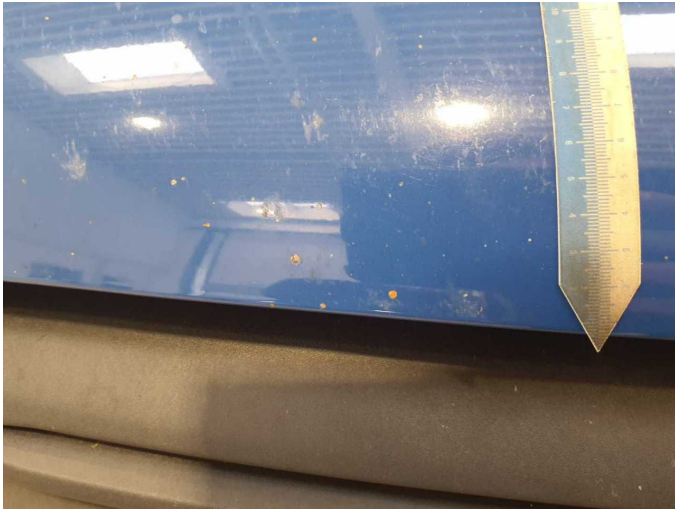
Damage 1: Front bumper: Front bumper (unpainted) - Scratch(es) - Loss in value



Damage 1: Front bumper: Front bumper (unpainted) - Scratch(es) - Loss in value



Damage 2: Bonnet: Bonnet - Corrosion - Repair and paint



Damage 2: Bonnet: Bonnet - Corrosion - Repair and paint



Damage 2: Bonnet: Bonnet - Corrosion - Repair and paint



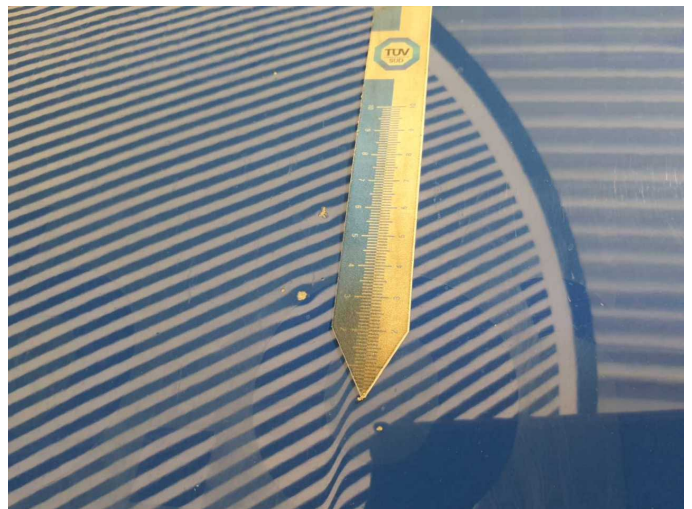
Damage 2: Bonnet: Bonnet - Corrosion - Repair and paint



Damage 2: Bonnet: Bonnet - Corrosion - Repair and paint



Damage 2: Bonnet: Bonnet - Corrosion - Repair and paint



Damage 2: Bonnet: Bonnet - Corrosion - Repair and paint



Damage 2: Bonnet: Bonnet - Corrosion - Repair and paint



Damage 2: Bonnet: Bonnet - Corrosion - Repair and paint



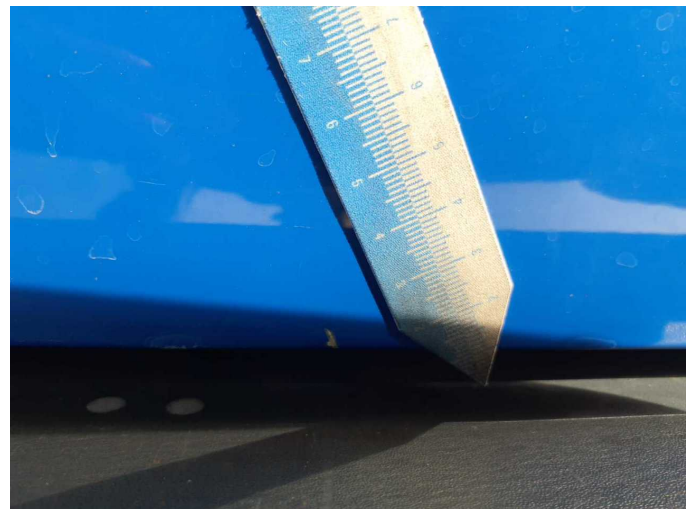
Wear and tear 9: Boot lid / rear door: Boot lid - Dent / paintcoat damage - No deduction



Wear and tear 9: Boot lid / rear door: Boot lid - Dent / paintcoat damage - No deduction



Wear and tear 9: Boot lid / rear door: Boot lid - Dent / paintcoat damage - No deduction



Wear and tear 9: Boot lid / rear door: Boot lid - Dent / paintcoat damage - No deduction



Wear and tear 10: Steering system: Steering wheel - Soiled - No deduction



Wear and tear 10: Steering system: Steering wheel - Soiled - No deduction



Wartungshistorie

(gemäß Auftraggeber Informationen)

Fahrgestellnummer: W1V44760313850666

Hersteller / Modell: MERCEDES-BENZ MB Vito 116 CDI Lang HA Aut. BASE

Datum	KM-Stand	Beschreibung
27.01.2025	214.711	Bremsscheiben+Beläge v+h
16.08.2024	190.332	Regelwartungsdienst
02.02.2024	158.564	Regelwartungsdienst
04.09.2023	135.419	Bremsinspektion vo + hi
26.05.2023	119.749	Regelwartungsdienst
23.09.2022	83.171	Regelwartungsdienst
09.06.2022	65.664	Bremsinspektion vo + hi
07.01.2022	39.523	Kleine Inspektion