



Expertise

Protocol number: 41816593  
Order number / reference: 25255836  
Inspection date: 2 Oct 2025

Manufacturer: Mercedes-Benz	Model: Vito 114 CDI Kompakt HA Aut. BASE
VIN: W1V44760114127521	



Vehicle details	
Manufacturer / Type / Model / Equipment	
Mercedes-Benz Vito 114 CDI Kompakt HA Aut. BASE	
Vehicle Identification number	W1V44760114127521
Mileage (Read)	152,422 km
First registration	27 Jul 2022
Number of holders	1
Next periodical technical inspection	07/2026
(Report on hand)	
Power / Engine displacement	100 kw / 1,950 ccm
Fuel type / Cylinder	Diesel / 4
Gearbox / Number of gears	Automatic / 9
Type of drive	Rear drive
Type of vehicle	Van
Colour / colour code	brillantsilber metallic
Doors / Seats	4 / 2
Upholstery type	Cloth
Colour of upholstery	Black-Anthracite



## Vehicle details

<b>Maintenance booklet / proof</b>	digital proof / complete	<b>Next maintenance in</b>	648 km
<b>Last maintenance on / at</b>	07/2025 at 143,694 km		
<b>Key is / should be</b>	2 / 2	<b>FZG documents</b>	ZB#2 (B) was available (copy), ZB#1 (S) was not available
		<b>Letter No.</b>	GM184515
<b>Previous damage / Accident</b>	None detectable	<b>Repainting</b>	None detectable
<b>Inspection conditions</b>	sufficient	<b>Lifting equipment / pit</b>	yes
<b>Test drive</b>	Not performed	<b>Engine function test</b>	Performed
<b>Manufacturer key number/ type code number</b>	2222 / BBI 04300		
<b>Emission standard</b>	EURO6;WLTP;AR;PI/CI;N1 III, N2	<b>Fine dust sticker</b>	
<b>Permitted total weight</b>	3,050 kg	<b>Empty weight</b>	

## Tyres

### Mounted tyres

#	Tyre size	Type of tyre	Manufacturer	Tread depth
1)	225/55 R17 107H	Summer tyres on Steel rim with wheel cover	Dunlop	5mm / 5mm
2)	225/55 R17 107H	Summer tyres on Steel rim with wheel cover	Dunlop	5mm / 5mm

### Additional tyres

#	Tyre size	Type of tyre	Manufacturer	Tread depth
1)	225/55 R17 107T	Winter tyres on Steel	Continental	6mm / 6mm
2)	225/55 R17 107T	Winter tyres on Steel	Continental	6mm / 6mm

**Legend:** Tread depth information for tires on the left is in the first place, for tires on the right is in the second place on the axle in the direction of travel

## Equipment

### Standard equipment

- |   |   |
|---|---|
| <ul style="list-style-type: none"> <li>• Towing eye screwable front/rear</li> <li>• Driver's side airbag</li> <li>• Exterior mirrors, manually adjustable (2)</li> <li>• Battery: buffer battery for starting process</li> <li>• Attachment points in the roof frame</li> <li>• Brake light, third</li> <li>• COC papers</li> <li>• diesel particulate filter</li> <li>• Electronic Stability Program (ADAPTIVE ESP) with integrated anti-lock braking system (ABS)</li> <li>• Electric window lifter driver/passenger</li> <li>• Generator 14 V / 200 A</li> <li>• Speed limit 210 km/h</li> <li>• Weight variant 2,800 kg</li> <li>• Seat belt warning device for driver's seat</li> <li>• Main tank 57 liters</li> <li>• Interior trim of cargo area, side</li> <li>• Communication module (LTE) for digital services</li> <li>• Paint finish: Solid paint</li> <li>• Headlight range adjustment</li> <li>• Multifunctional steering wheel</li> <li>• Breakdown management</li> <li>• Tires: 195/65 R 16</li> <li>• Tires: Premium Protection Tires (3 years)</li> <li>• Wheels: steel rims 6.5 J x 16</li> <li>• Sliding door right loading/passenger compartment</li> <li>• Crosswind Assist</li> <li>• Seats: Adjustable passenger seat</li> <li>• Start-stop function</li> <li>• Cruise control</li> <li>• first aid kit</li> <li>• Warning triangle</li> <li>• Immobiliser</li> <li>• Central locking with radio remote control</li> <li>• Registration certificate, part II</li> </ul> | <ul style="list-style-type: none"> <li>• Passenger side airbag</li> <li>• ATTENTION ASSIST</li> <li>• Outside temperature display</li> <li>• Battery: fleece battery 12 V / 92 Ah</li> <li>• Hill start assist</li> <li>• Brake lights, adaptive</li> <li>• Cup holder front</li> <li>• Electronic tachometer</li> <li>• Chassis: Basic chassis</li> <li>• Vehicle HVO capable</li> <li>• Parking brake</li> <li>• Generator management</li> <li>• Transmission: 9G-TRONIC</li> <li>• Seat belt warning device for front passenger seat</li> <li>• Lockable glove compartment</li> <li>• Boot lid</li> <li>• Instrument cluster with pixel matrix display</li> <li>• Headrests (2), front</li> <li>• Steering wheel adjustable in tilt and height</li> <li>• Mercedes-Benz emergency call system</li> <li>• Package: BlueEFFICIENCY</li> <li>• Upholstery: Caluma black fabric</li> <li>• Tires: Tires without specification make</li> <li>• Tires: Summer tires</li> <li>• Headlights: halogen technology</li> <li>• Key: 3-button radio remote control</li> <li>• Electromechanical power steering</li> <li>• Seats: Driver's seat</li> <li>• 12V socket</li> <li>• Partition wall continuous</li> <li>• Pre-installation for Remote Services Plus</li> <li>• Maintenance interval display &gt;&gt;ASSYST&lt;</li> <li>• Heat-insulating glass all around</li> <li>• Registration as a truck</li> </ul> |
|---|---|

### Extra equipment

- |  |   |
|--|---|
| <ul style="list-style-type: none"> <li>• Distance Assistant DISTRONIC active (automatic transmission) (including HOLD function)</li> <li>• Exterior mirrors electrically adjustable and heated, left and right</li> <li>• Rear camera not foldable</li> <li>• Heating for windshield washer system</li> <li>• Large fuel tank, approx. 70 liters</li> <li>• LED Intelligent Light System (ILS) (including dynamic cornering lights, country road and motorway lights, cornering lights, dynamic headlight range control, automatic high beam assistant, LED rear lights - including instrument cluster with pixel matrix display)</li> </ul> | <ul style="list-style-type: none"> <li>• Airbag: Thoraxbag-Pelvis-Sidebag for driver</li> <li>• Loading/unloading (load increase to 3.05 t GVW)</li> <li>• Roof control unit comfort in conjunction with rain sensor</li> <li>• Driving light assistant (automatic switching on of driving lights)</li> <li>• Air conditioning controlled Tempmatic</li> <li>• Paint finish: metallic</li> <li>• leather steering wheel</li> <li>• Center console with storage compartment</li> <li>• Navigation accessories: Live Traffic Information</li> </ul> |
|--|---|



- Package: Driving Assistance Package (Blind Spot Assist - Lane Keeping Assist - COLLISION PREVENTION ASSIST)
- Package: Park (rear view camera - PARKTRONIC)
- Radio/Navi: Multimedia radio and navigation system "Audio 40" (7-inch LCD touchscreen - DAB Digital Radio - Apple CarPlay and Android Auto - Bluetooth 3.0 - Hands-free system - Live Traffic Information - 2-way front speakers)
- Tire pressure monitoring (on front and rear axle (wireless))
- Sliding door left (cargo area)
- Seats: Comfort driver's seat
- Sortimo equipment
- Windshield washer fluid level warning light
- Package: Anti-theft package (includes an anti-theft alarm system (EDW), interior monitoring, and tow-away protection. The audible alarm sounds intermittently for approximately 25 seconds, and the hazard warning lights flash rapidly for approximately 4 minutes.)
- Radio: Audio 30
- Radio: Digital Radio DAB
- Rain sensor
- Tires: 225/55R17
- Tires: M + S 225/55 R 17
- Wheels: steel rims 6.5 J x 17
- Seat: Lumbar support driver's seat
- Seat heating on driver's side
- Lane Keeping Assist

### Brief expert findings

Documents submitted	At the time of the inspection, the registration certificate Part 2 (letter) was available, but the registration certificate Part 1 (certificate) was not. (Copy)
VIN comparison	The vehicle identification number (VIN) was read from the vehicle and its conformity with the submitted documents was verified during the inspection by the undersigned.
Inspection	The inspection conditions were sufficient for the assessment of the vehicle. Lifting equipment and a pit were available for examining the vehicle.
Test drive	No test drive/maneuvering was carried out during the inspection of the vehicle.
Engine function test	An engine test run was performed.

### Value reducing factors

No.	Component group	Description
1	Body	Body - Glued / labelled - De-glue / neutralise
2	Door - front left side	Door - Dent / paintcoat damage - Repair and paint
3	Vehicle glazing	Windscreen - Broken / torn - Replace

### Wear and tear

No.	Component group	Description
1	Rear bumper	Rear bumper - Scratch(es) - No deduction
2	Door - front right side	Door - Scratch(es) - No deduction

The vehicle shows signs of wear commensurate with its age and use.

### Order/Scope of order

The order was placed to prepare a sales report for the vehicle described. This includes the following:

- Description of core relevant information about the vehicle
- Documentation of equipment features  
(Delivery by third-party service providers)
- Documentation of damage, defects, missing parts
- Documentation of previous damage, unrepaired previous damage, repainting
- a brief visual or functional inspection of the equipment details if possible.  
(Functional tests of driver assistance systems are not included in the scope of services!)
- a photo documentation of the vehicle



## Basis for the order

This product is based on the guidelines for vehicle returns and valuations of light commercial vehicles from Alphabet Fuhrparkmanagement GmbH. The expert makes the explicit findings in each individual case objectively within the framework of the specified standards based on his or her own expertise.

The vehicle inspection takes place in a disassembled state.

Damage or defects that can only be detected during disassembly/diagnosis work or through advanced knowledge remain within the scope of the prognosis risk. An extended risk exists for concealed defects caused by fraudulent deception and not identifiable by the expert.

Damage or defects resulting from normal use or wear and tear of the vehicle will be accepted according to the applicable standard.

There was no explicit identification or monetary consideration of the expected features within the product.

Features which in their nature and severity slightly exceed normal use but do not constitute unacceptable damage will be documented and identified under signs of use if necessary.

Damage or defects that can no longer be attributed to normal use or wear and tear according to the underlying standard are listed in the product under value-reducing factors.

Depending on the product specification, a monetary ID can be provided. If this takes place, the costs can be 100% d or pro rata depending on the vehicle's age and mileage.

## Previous damages

Apparently, no repaired previous damage could be found on the vehicle.

## Comments

- Winterradsatz ist kein Bestandteil des Auslieferumfangs.





Figure 1: Diagonal front (left)



Figure 2: Diagonal front (right)



Figure 3: Diagonal rear (left)



Figure 4: Diagonal rear (right)



Figure 5: Interior - front



Figure 6: Interior - rear





Figure 7: Instrument cluster



Figure 8: Instrument panel



Figure 9: Interior 360° view



Figure 10: Cargo area



Figure 11: VIN



Figure 12: Mounted tyres



Figure 13: Mounted tyres



Figure 14: Documents



Figure 15: Documents



Figure 16: Documents

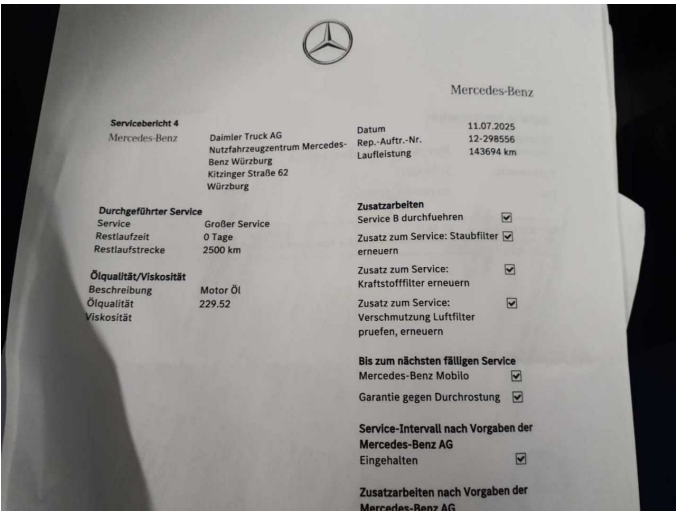


Figure 17: Documents

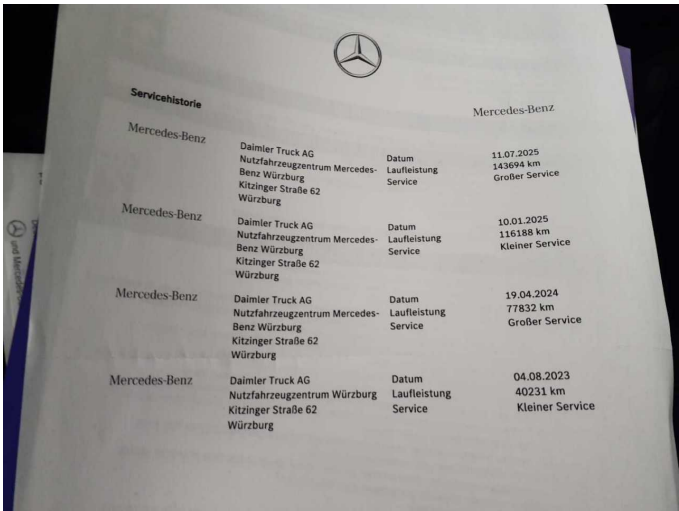


Figure 18: Documents



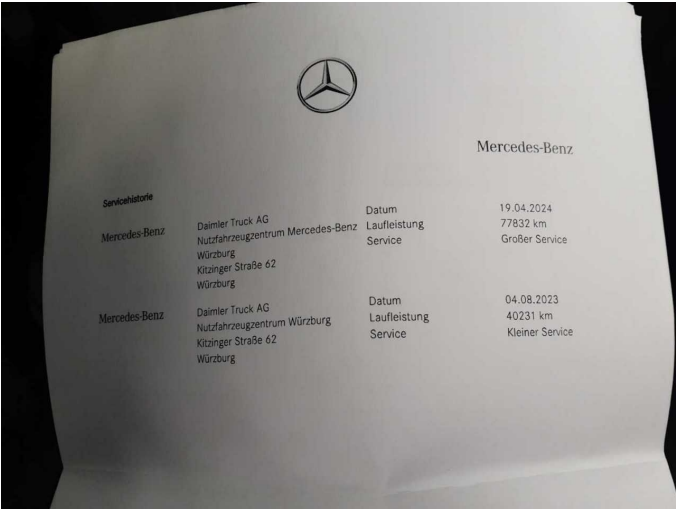


Figure 19: Documents



Figure 20: Additional tyres



Figure 21: Navigation



Figure 22: Misc.



Figure 23: Misc.



Figure 24: Misc.



Figure 25: Misc.



Figure 26: Misc.



Figure 27: Misc.



Figure 28: Misc.



Figure 29: Misc.



Figure 30: Misc.





Figure 31: Misc.



Damage 1: Body: Body - Glued / labelled - De-glue / neutralise



Damage 1: Body: Body - Glued / labelled - De-glue / neutralise



Damage 1: Body: Body - Glued / labelled - De-glue / neutralise



Damage 1: Body: Body - Glued / labelled - De-glue / neutralise



Damage 2: Door - front left side: Door - Dent / paintcoat damage - Repair and paint

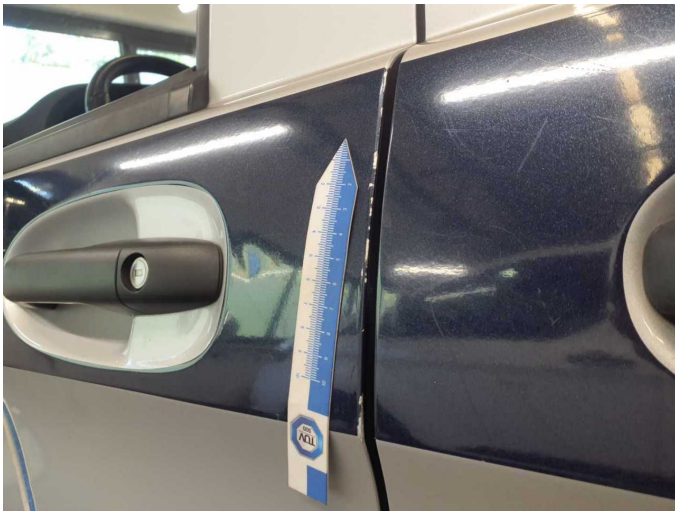




**Damage 2:** Door - front left side: Door - Dent / paintcoat damage - Repair and paint



**Damage 2:** Door - front left side: Door - Dent / paintcoat damage - Repair and paint



**Damage 2:** Door - front left side: Door - Dent / paintcoat damage - Repair and paint



**Damage 2:** Door - front left side: Door - Dent / paintcoat damage - Repair and paint



**Damage 2:** Door - front left side: Door - Dent / paintcoat damage - Repair and paint



**Damage 2:** Door - front left side: Door - Dent / paintcoat damage - Repair and paint



**Damage 2:** Door - front left side: Door - Dent / paintcoat damage - Repair and paint



**Damage 3:** Vehicle glazing: Windscreen - Broken / torn - Replace



**Damage 3:** Vehicle glazing: Windscreen - Broken / torn - Replace