



Expertise

Protocol number: 41590254
Order No. / Reference: 25211237
Inspection date: 17 Sept 2025

Manufacturer: Mercedes-Benz

Model: Vito 114 CDI Kompakt HA Aut. BASE

VIN: W1V44760114125847



Vehicle details	
Manufacturer / Type / Model / Equipment	
Mercedes-Benz Vito 114 CDI Kompakt HA Aut. BASE	
Vehicle Identification number	W1V44760114125847
Mileage (Read)	83,419 km
First registration	7 Jul 2022
Number of holders	1
Next periodical technical inspection	07/2026
(Report on hand)	
Power / Engine displacement	100 kw / 1,950 ccm
Fuel type / Cylinder	Diesel / 4
Gearbox / Number of gears	Automatic / 9
Type of drive	Rear drive
Type of vehicle	Van
Colour / colour code	Brillantsilber metallic
Doors / Seats	4 / 2
Upholstery type	Cloth
Colour of upholstery	Black



Vehicle details

Maintenance booklet / proof	Available / incomplete	Next maintenance in	677 Tag(e)
Last maintenance on / at	07/2024 at 40,295 km		
Key is / should be	2 / 2	FZG documents	ZB#2 (B) was available (copy), ZB#1 (S) was not available
		Letter No.	GM182806
Previous damage / Accident	Detectable	Repainting	Detectable
Inspection conditions	sufficient	Lifting equipment / pit	yes
Test drive	Not performed	Engine function test	Performed
Manufacturer key number/ type code number	2222 / BBI 04300		
Emission standard	EURO6;WLTP;AR;PI/CI;N1 III, N2	Fine dust sticker	
Permitted total weight	3,050 kg	Empty weight	

Tyres

Mounted tyres

#	Tyre size	Type of tyre	Manufacturer	Tread depth
1)	225/55 R17 109H	Summer tyres on Steel rim with wheel cover	Dunlop	5mm / 5mm
2)	225/55 R17 109H	Summer tyres on Steel rim with wheel cover	Dunlop	5mm / 5mm

Additional tyres

#	Tyre size	Type of tyre	Manufacturer	Tread depth
1)	225/55 R17 109T	Winter tyres on Steel	Continental	6mm / 6mm
2)	225/55 R17 109T	Winter tyres on Steel	Continental	6mm / 6mm

Legend: Tread depth information for tires on the left is in the first place, for tires on the right is in the second place on the axle in the direction of travel

Equipment

Standard equipment

- | | |
|---|--|
| <ul style="list-style-type: none"> • Seat belt warning device for front passenger seat • Lockable glove box • Boot lid • Instrument cluster with pixel matrix display • Headrests (2), front • Headlight range adjustment • Multifunctional steering wheel • Breakdown management • Tires: Tires without specification make • Tires: Summer tires • Sliding door right loading/passenger compartment • Crosswind Assist • Seats: Adjustable passenger seat • Start-stop function • Cruise control • first aid kit • Warning triangle • Immobiliser • Central locking with radio remote control • Registration certificate, part II • Passenger side airbag • ATTENTION ASSIST • Battery: buffer battery for starting process • Attachment points in the roof frame • Brake light, third • COC papers • diesel particulate filter • Electronic Stability Program (ADAPTIVE ESP) with integrated anti-lock braking system (ABS) • Electric window lifter driver/passenger • Generator 14 V / 200 A • Speed limit 210 km/h • Weight variant 2,800 kg | <ul style="list-style-type: none"> • Seat belt warning device for driver's seat • Main tank 57 liters • Interior trim of cargo area, side • Communication module (LTE) for digital services • Steering wheel adjustable in tilt and height • Mercedes-Benz emergency call system • Package: BlueEFFICIENCY • Upholstery: Caluma black fabric • Tires: Premium Protection Tires (3 years) • Headlights: halogen technology • Key: 3-button radio remote control • Electromechanical power steering • Seats: Driver's seat • 12V socket • Partition wall continuous • Pre-installation for Remote Services Plus • Maintenance interval display >>ASSYST< • Heat-insulating glass all around • Registration as a truck • Towing eye screwable front/rear • Driver's side airbag • Outside temperature display • Battery: fleece battery 12 V / 92 Ah • Hill start assist • Brake lights, adaptive • Cup holder front • Electronic tachometer • Chassis: Basic chassis • Vehicle HVO capable • Parking brake • Generator management • Transmission: 9G-TRONIC |
|---|--|

Extra equipment

- | | |
|---|--|
| <ul style="list-style-type: none"> • Rear camera not foldable • Air conditioning controlled Tempmatic • Paint finish: metallic • leather steering wheel • Center console with storage compartment • Package: Anti-theft package (includes an anti-theft alarm system (EDW), interior monitoring, and tow-away protection. The audible alarm sounds intermittently for approximately 25 seconds, and the hazard warning lights flash rapidly for approximately 4 minutes.) | <ul style="list-style-type: none"> • Heating for windshield washer system • Large fuel tank, approx. 70 liters • LED Intelligent Light System (ILS) (including dynamic cornering lights, country road and motorway lights, cornering lights, dynamic headlight range control, automatic high beam assistant, LED rear lights - including instrument cluster with pixel matrix display) • Package: Driving Assistance Package (Blind Spot Assist - Lane Keeping Assist - COLLISION PREVENTION ASSIST) • Package: Park (rear view camera - PARKTRONIC) • Radio: Digital Radio DAB • Rain sensor • Tires: 225/55R17 |
|---|--|



- Radio/Navi: Multimedia radio and navigation system "Audio 40" (7-inch LCD touchscreen - DAB Digital Radio - Apple CarPlay and Android Auto - Bluetooth 3.0 - Hands-free system - Live Traffic Information - 2-way front speakers)
- Wheels: steel rims 6.5 J x 17
- Seat: Lumbar support driver's seat
- Seat heating on driver's side
- Distance Assistant DISTRONIC active (automatic transmission) (including HOLD function)
- Exterior mirrors electrically adjustable and heated, left and right

- Tires: M + S 225/55 R 17
- Tire pressure monitoring (on front and rear axle (wireless))
- Sliding door left (cargo area)
- Seats: Comfort driver's seat
- Windshield washer fluid level warning light
- Airbag: Thoraxbag-Pelvis-Sidebag for driver
- Loading/unloading (load increase to 3.05 t GVW)
- Roof control unit comfort in conjunction with rain sensor
- Driving light assistant (automatic switching on of driving lights)

Retrofitted equipment

- Sortimo equipment

Brief expert findings

Documents submitted	At the time of the inspection, the registration certificate Part 2 (letter) was available, but the registration certificate Part 1 (certificate) was not. (Copy)
VIN comparison	The vehicle identification number (VIN) was read from the vehicle and its conformity with the submitted documents was verified during the inspection by the undersigned.
Inspection	The inspection conditions were sufficient for the assessment of the vehicle. Lifting equipment and a pit were available for examining the vehicle.
Test drive	No test drive/maneuvering was carried out during the inspection of the vehicle.
Engine function test	An engine test run was performed.

Value reducing factors

No.	Component group	Description
1	Misc.	Inspection / maintenance - No evidence - No deduction
2	Door - front left side	Door edge - Scratch(es) - Smart repair
3	Body	Body - Glued / labelled - De-glue / neutralise
4	Wing mirror - right side	Mirror housing - Holes - Replace
5	Door - rear left side	Door - Scratch(es) - Paint

Previous damages

No.	Previous damage	Extent of damage (Net)
1	Side right, Professionally repaired, Invoice of repair done	Non-existent

Repainting

No.	Repainting
1	Door - rear right side, Professionally carried out, Invoice of repair done

Paint coat thickness measurement

Door - rear right side	325 µm
------------------------	--------



Order/Scope of order

The order was placed to prepare a sales report for the vehicle described. This includes the following:

- Description of core relevant information about the vehicle
- Documentation of equipment features
(Delivery by third-party service providers)
- Documentation of damage, defects, missing parts
- Documentation of previous damage, unrepaired previous damage, repainting
- a brief visual or functional inspection of the equipment details if possible.
(Functional tests of driver assistance systems are not included in the scope of services!)
- a photo documentation of the vehicle

Basis for the order

This product is based on the Alphabet Fuhrpark GmbH guidelines for vehicle returns and valuations. The expert makes the explicit findings in each individual case objectively within the framework of the specified standards based on his or her own expertise.

The vehicle inspection takes place in a disassembled state.

Damage or defects that can only be detected during disassembly/diagnosis work or through advanced knowledge remain within the scope of the prognosis risk. An extended risk exists for concealed defects caused by fraudulent deception and not identifiable by the expert.

Damage or defects resulting from normal use or wear and tear of the vehicle will be accepted according to the applicable standard.

There was no explicit identification or monetary consideration of the expected features within the product.

Features which in their nature and severity slightly exceed normal use but do not constitute unacceptable damage will be documented and identified under signs of use if necessary.

Damage or defects which, according to the underlying standard, can no longer be attributed to normal use or wear and tear are listed in the product under "Depreciating Factors".

Depending on the product specification, a monetary ID can be provided. If this takes place, the costs can be 100% d or pro rata depending on the vehicle's age and mileage.

Previous damages

Professionally repaired previous damages were found at the vehicle.

Comments

- Der 2.Radsatz gehört nicht zur Ausstattung und wurde nicht in der Bewertung berücksichtigt.



Figure 1: Diagonal front (left)



Figure 2: Diagonal front (right)



Figure 3: Diagonal rear (left)



Figure 4: Diagonal rear (right)

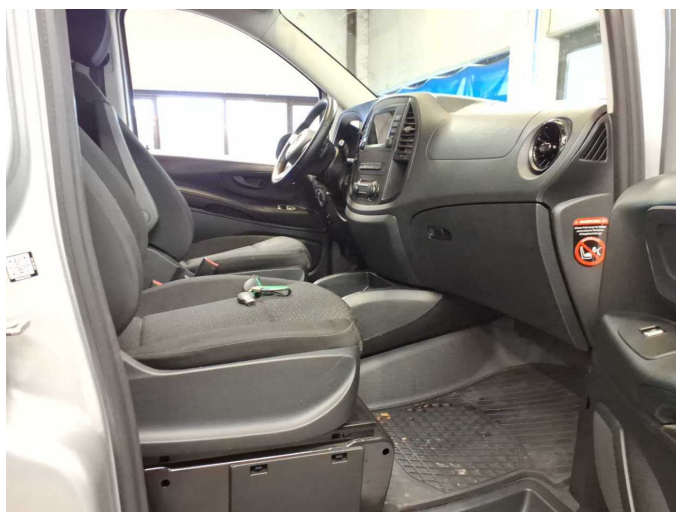


Figure 5: Interior - front



Figure 6: Interior - rear



Figure 7: Instrument cluster



Figure 8: Instrument panel



Figure 9: Interior 360° view

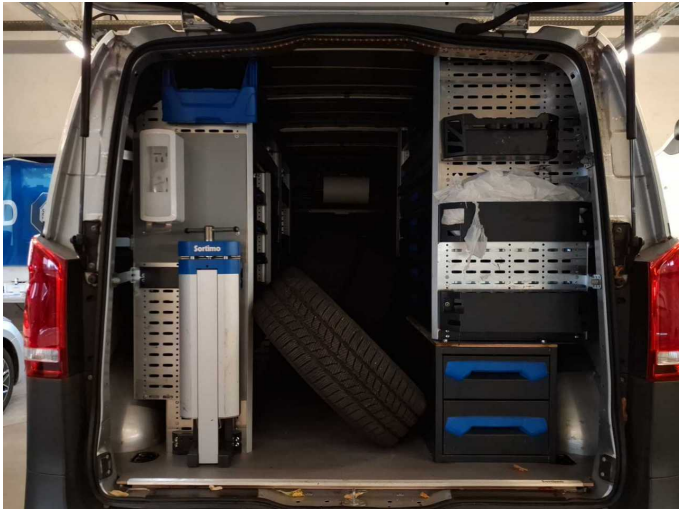


Figure 10: Cargo area



Figure 11: VIN



Figure 12: Mounted tyres



Figure 13: Documents



Figure 14: Documents

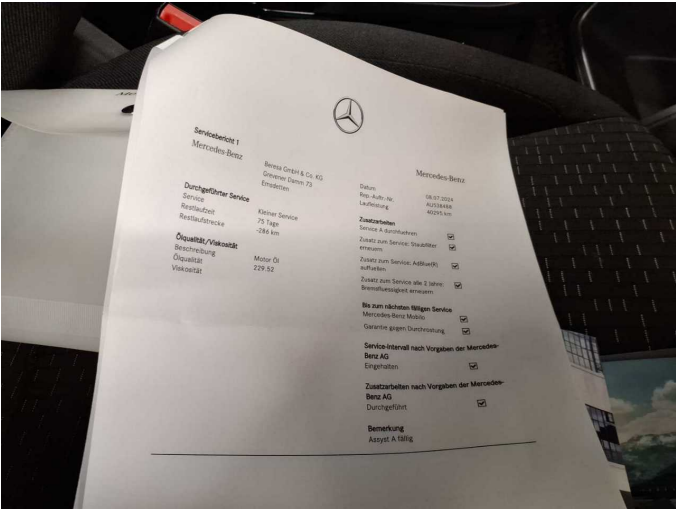


Figure 15: Documents



Figure 16: Documents



Figure 17: Documents



Figure 18: Additional tyres



Figure 19: Additional tyres



Figure 20: Additional tyres

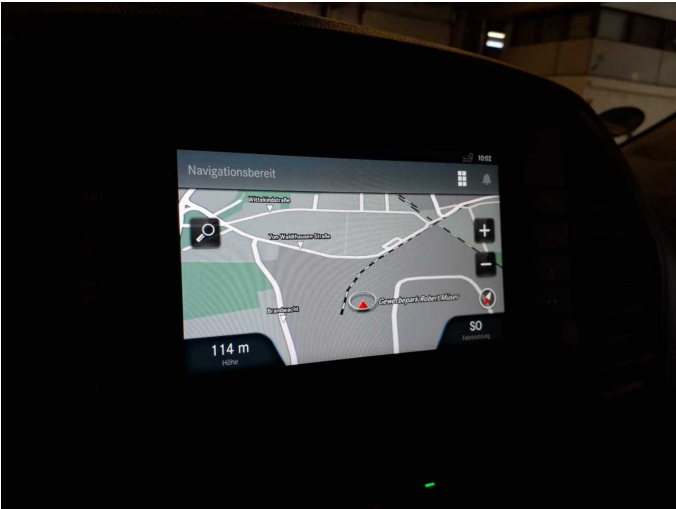


Figure 21: Navigation

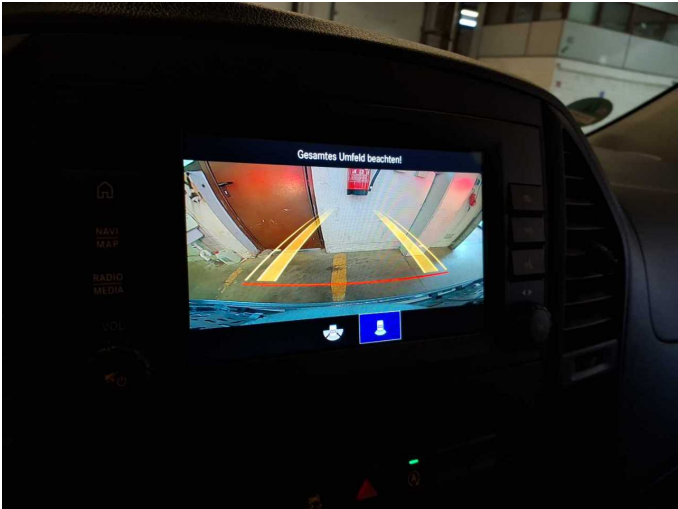


Figure 22: Misc.



Figure 23: Misc.



Figure 24: Misc.



Figure 25: Misc.



Figure 26: Misc.



Figure 27: Misc.



Damage 2: Door - front left side: Door edge - Scratch(es) - Smart repair



Damage 2: Door - front left side: Door edge - Scratch(es) - Smart repair



Damage 3: Body: Body - Glued / labelled - De-glue / neutralise



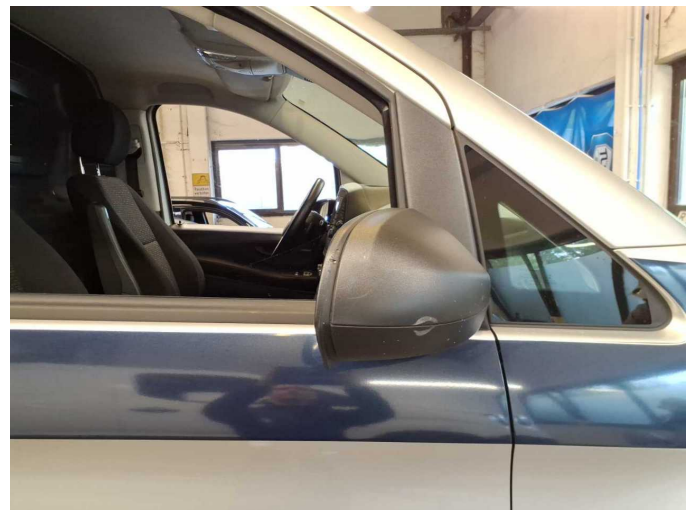
Damage 3: Body: Body - Glued / labelled - De-glue / neutralise



Damage 3: Body: Body - Glued / labelled - De-glue / neutralise



Damage 3: Body: Body - Glued / labelled - De-glue / neutralise



Damage 4: Wing mirror - right side: Mirror housing - Holes - Replace



Damage 4: Wing mirror - right side: Mirror housing - Holes - Replace



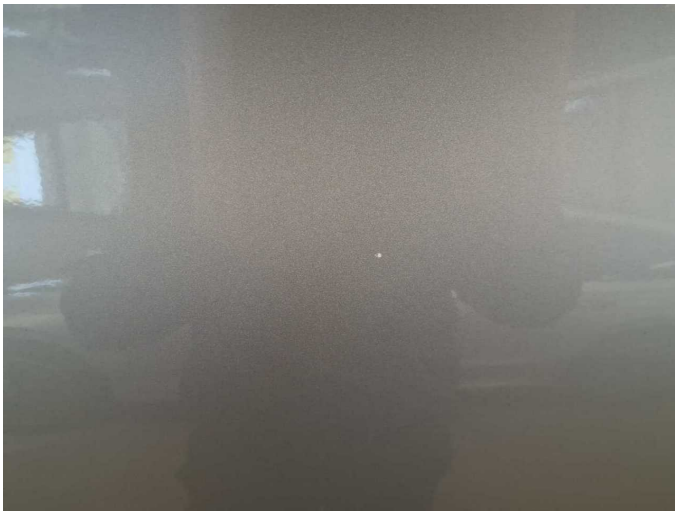
Damage 5: Door - rear left side: Door - Scratch(es) - Paint



Damage 5: Door - rear left side: Door - Scratch(es) - Paint



Damage 5: Door - rear left side: Door - Scratch(es) - Paint



Damage 5: Door - rear left side: Door - Scratch(es) - Paint



Repainting 1: Door - rear right side



Repainting 1: Door - rear right side