



MERCEDES CITAN  
CITAN FGN 109 CDI LONG

VIN NO W1V4156031U299900  
Registration Number GC701KM



MOT Date



Last Service



Number of Owners



Last Service Mileage



Number of Keys



First Registration Date



Odometer Reading



Country First Registered



60810 km

Inspection Report Summary

Customer	BCAuto Encheres	Report Number	P20250711080002
Inspection Date / Place	2025-07-11 / BCA GARONS	Cosmetic Grade	5

Vehicle Summary

Vehicle Condition	Non-Runner	VAT Type	Qualified - Normal Rate
Fuel Type	Diesel	Gearbox Type	Manual
Colour	White	Engine Size (cc)	1461
Engine Size	1.5	No of Doors	5
Body Type	Box Wagon	Drive Train	Front
Seat Colour		No of Seats	2
Charging Cables		WLTP CO2 Emissions	

Vehicle History & Documents

Service Book Available	-	Next Service Mileage	km
Previous Usage	Normal Use	Imported	
Manufacturer Warrenty			







Equipment

Central locking

Stability control

Power assisted steering

Radio

Cruise control

Equipment Details

Seat Heating

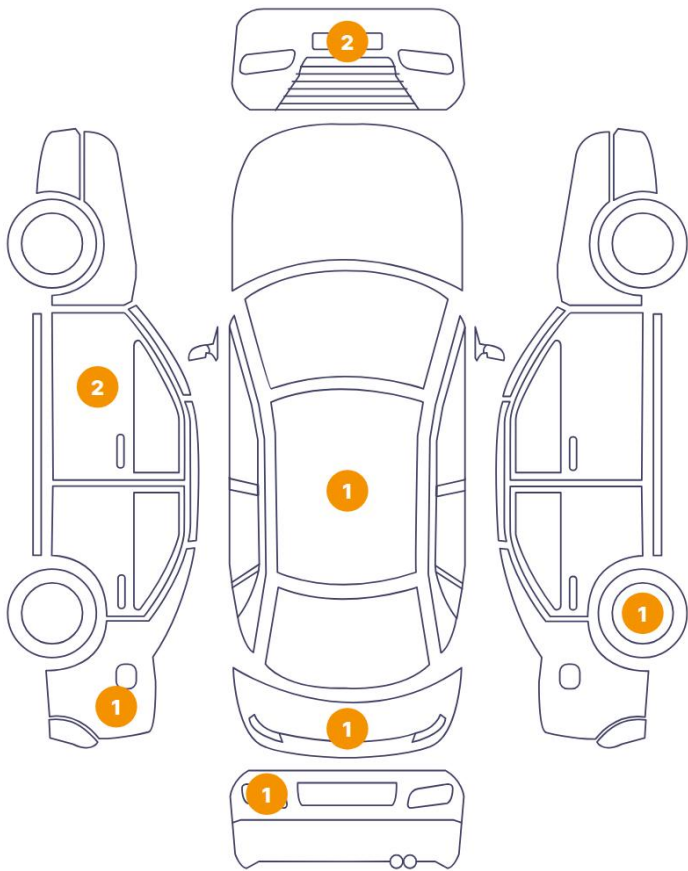
No

Air Conditioning

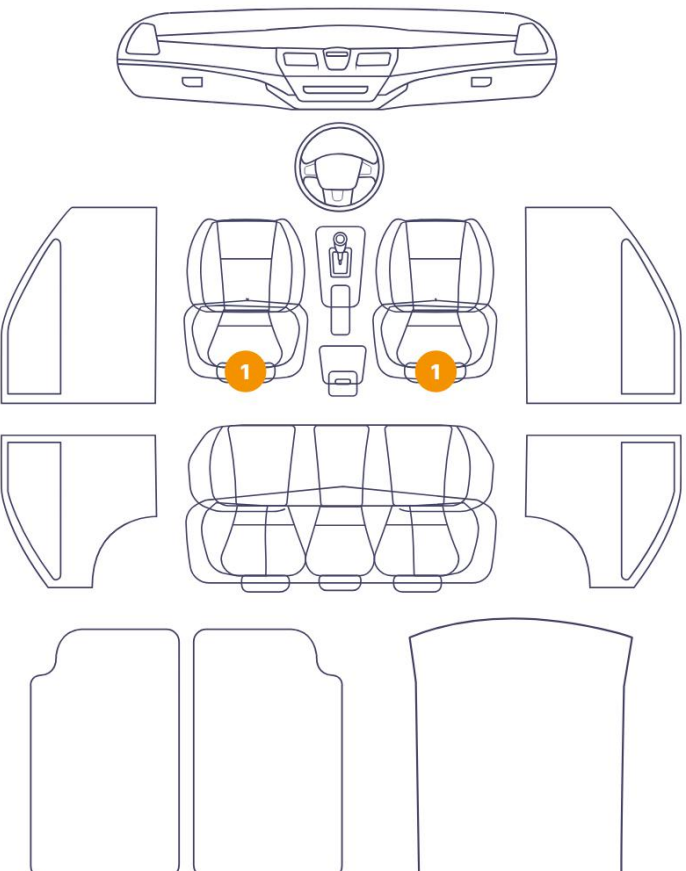
Yes

Cosmetic Damage

9 Dommages



5 Dommages



Component		Damage	Comments
1	Tailgate Upholstery / Back	Interior / Scraped	
2	Trunk Carpet	Interior / Scraped	
3	Tailgate Upholstery / Back	Interior / Scraped	
4	Roof	Bodywork / Dent / Dent	
5	Tailgate	Bodywork / Dent / Deformation	
6	Reflector / Back Left	Bodywork / Breakage / Crack	
7	Fuel Door / Back Left	Bodywork / Breakage / Crack	
8	Door / Front Left	Paint / Scratch / Line	
9	Seat Cushion / Front Left	Interior / Dirty	
10	Seat Cushion / Front Right	Interior / Dirty	
11	Mirror / Front Left	Bodywork / Breakage / Crack	
12	Bumper / Front	Bodywork / Breakage / Crack	
13	Bumper / Front	Missing Part	







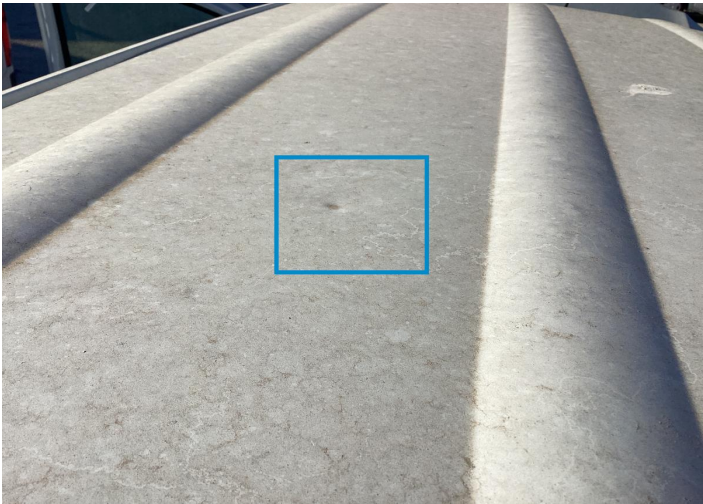
1. Tailgate Upholstery / Back Interior / Scraped -



2. Trunk Carpet Interior / Scraped -



3. Tailgate Upholstery / Back Interior / Scraped -



4. Roof Bodywork / Dent / Dent -



5. Tailgate Bodywork / Dent / Deformation -

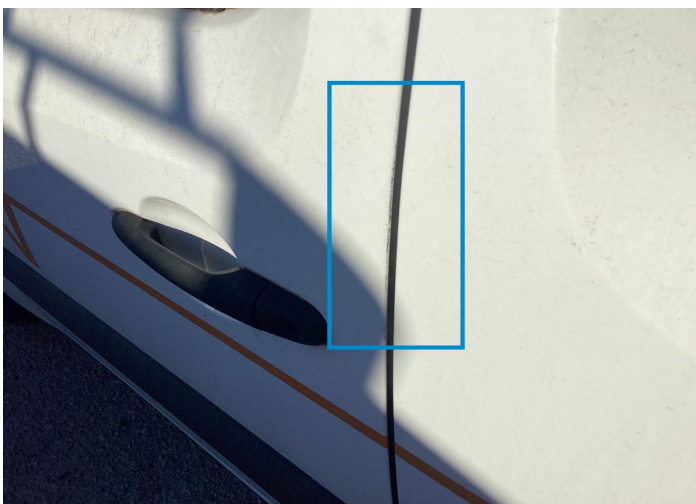


6. Reflector / Back Left Bodywork / Breakage / Crack -

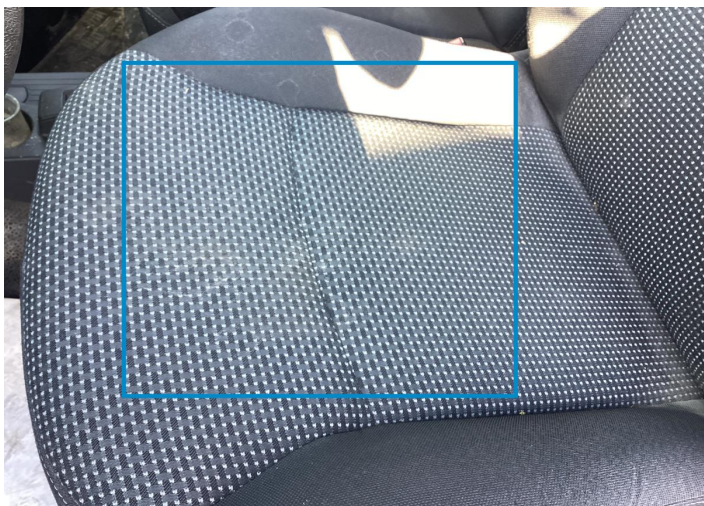




7. Fuel Door / Back Left  
Bodywork / Breakage / Crack -



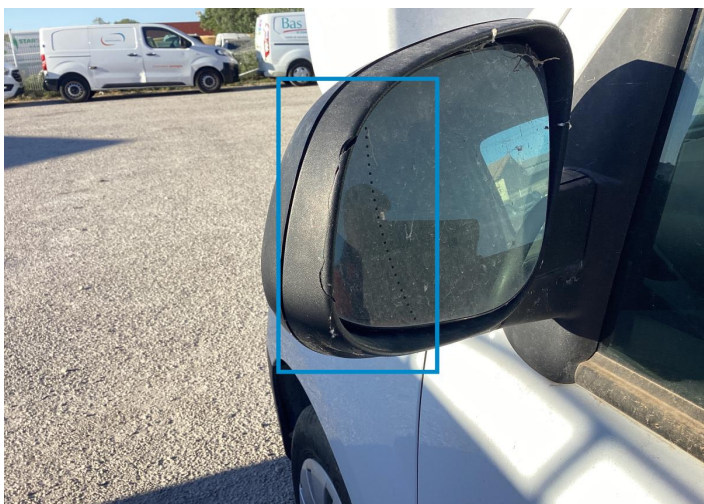
8. Door / Front Left  
Paint / Scratch / Line -



9. Seat Cushion / Front Left  
Interior / Dirty -



10. Seat Cushion / Front Right  
Interior / Dirty -



11. Mirror / Front Left  
Bodywork / Breakage / Crack -



12. Bumper / Front  
Bodywork / Breakage / Crack -





13. Bumper / Front  
Missing Part -



14. Hubcap / Back Right  
Out of Bodywork / Scratch -

Mechanical Condition


Tyres

Presence Anti-Theft Lock Nut 

 *No troubles detected, good condition or correct tests, according to vehicle age and mileage*

 *Damages or malfunction detected that requires repairs by the buyer*

 *Not applicable*

 *Not tested*

Disclaimer Section

*The test drive is done on a flat surface and lasts about 2 minutes. The driven distance is a minimum of 300 meters, including a u-turn, an acceleration and a braking phase. The highest speed achieved during this test is 50km/h. The mechanical check is a visual and dynamic diagnosis without any disassembly. We cannot guarantee any mechanical wear part.*