



MERCEDES-BENZ GLE  
GLE AMG 63 S 4Matic+ AMG Speedshift  
TCT 9G

VIN NO W1NFB8KB7RB184347  
Registration Number B7RB184347



MOT Date	Number of Owners	Number of Keys	Odometer Reading
2027-05-01	1	2	72917 km
Last Service	Last Service Mileage	First Registration Date	Country First Registered
-	-	2024-05-13	Germany

Inspection Report Summary

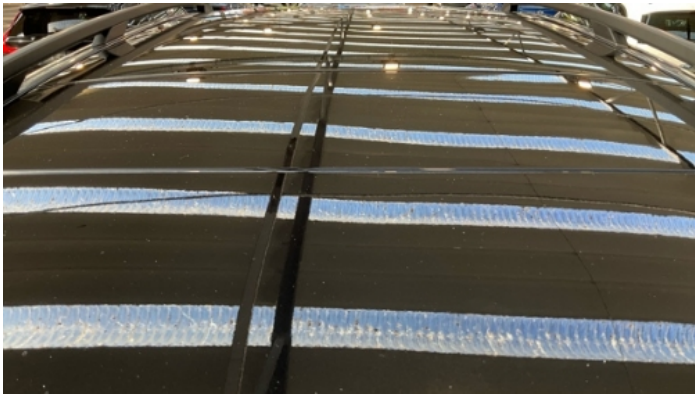
Customer	BCA Online	Report Number	P20250926152204
Inspection Date / Place	2025-09-26 / BCA Neuss	Cosmetic Grade	4

Vehicle Summary

Vehicle Condition	Runner	VAT Type	Qualifying
Fuel Type	Petrol	Road Worthy	Yes
Colour	Black	Engine Size (cc)	3982
Engine Size	4.0	No of Doors	5
Body Type	SUV	Drive Train	All-Wheel-Drive permanent
Seat Colour		No of Seats	5
Seat Covering Name	Schwarz	Seat Covering	Cloth/Leather
Charging Cables		WLTP CO2 Emissions	
Gearbox Type	Automatic		

Vehicle History & Documents

Service Book Available	Missing	Next Service Mileage	km
Previous Usage		Imported	No
Manufacturer Warrenty			











Equipment

Tinted Glass	360°camera	Alloys wheels	Anti-lock braking
Cabin Pre Heating	Digital Radio	Enhanced speaker system	Head up Display
Remote adjusting wing mirrors	Reversing Camera	Satellite navigation	Sunroof
Electrically folding wing mirrors	Emergencybrakeassist	Leather steering wheel	Radio
Trafficsignrecognition	Airbag Status	Ambientlighting	Bluetooth telephone interface
Cruise control	Digitaldashboard	Front parking sensors	Massageseats
Remote central locking	Roof rails	Stability control	Electrically adjustable seats
Electrictailgate	Laneassist	LED Headlamps	Rear parking sensors

Equipment Details

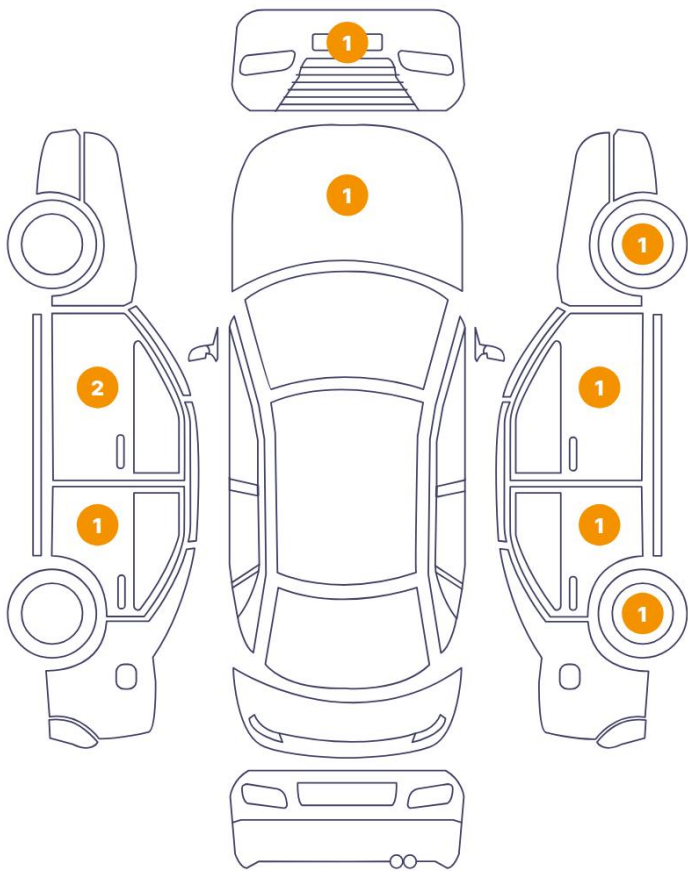
Air Conditioning	Four Zone Climate Control	Alloy Wheel Size	22
Enhanced Speaker System	Burmester	Seat Heating	Front and Rear
Sunroof Type	Opening Panoramic		

Wheels & Tyres

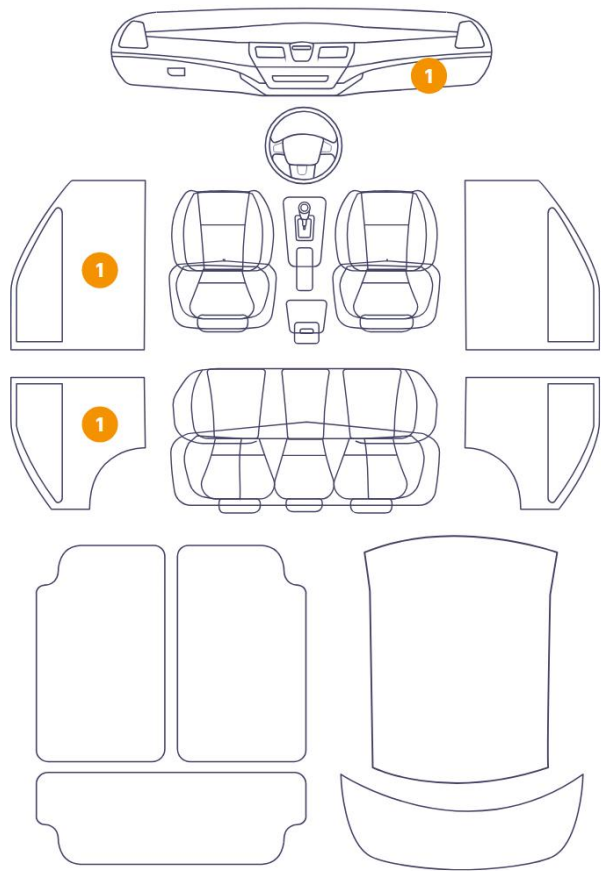
Right Front Tyre Depth	6	Left Front Tyre Depth	6
Right Rear Tyre Depth	6	Left Rear Tyre Depth	6

Cosmetic Damage

9 Schäden

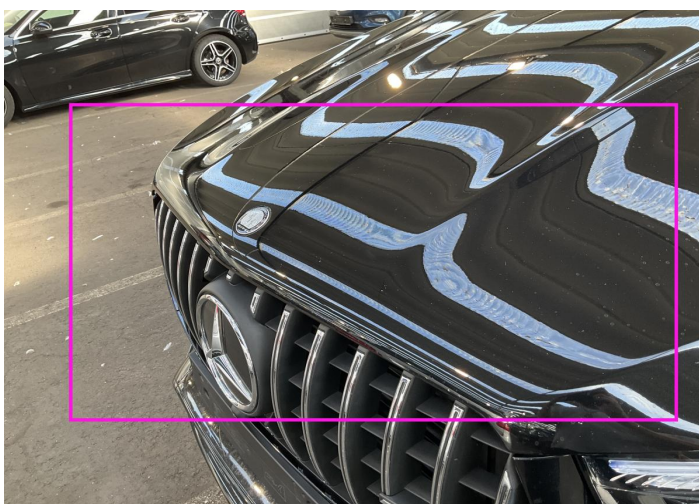


3 Schäden



Component		Damage	Comments
1	Hood	Paint / Stone Chip	
2	Bumper / Front	Paint / Stone Chip	
3	Mirror Repeater / Left	Bodywork / Breakage / Crack	
4	Door / Front Left	Paint / Scratch / Scuff	
5	Panel Filling / Front Left	Interior / Scratched	
6	Door / Back Left	Paint / Scratch / Scuff	
7	Panel Filling / Back Left	Interior / Scratched	
8	Center Console	Interior / Scratched	
9	Rim / Back Right	Out of Bodywork / Scratch	
10	Door / Back Right	Paint / Scratch / Scuff	
11	Door / Front Right	Paint / Scratch / Scuff	
12	Rim / Front Right	Out of Bodywork / Scratch	

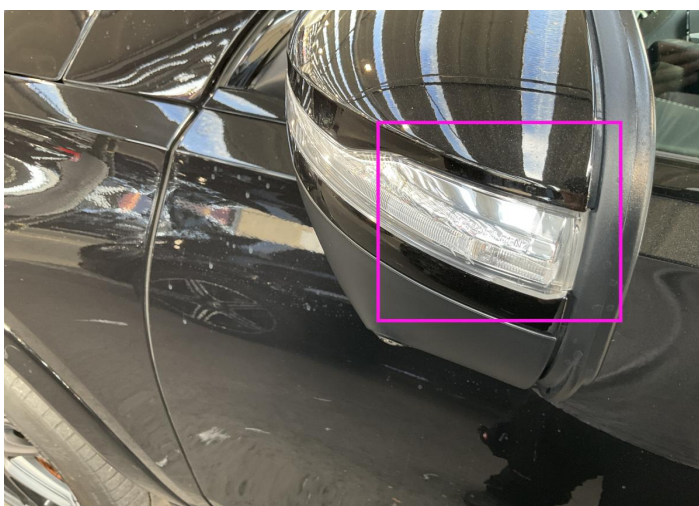




1. Hood  
Paint / Stone Chip -



2. Bumper / Front  
Paint / Stone Chip -



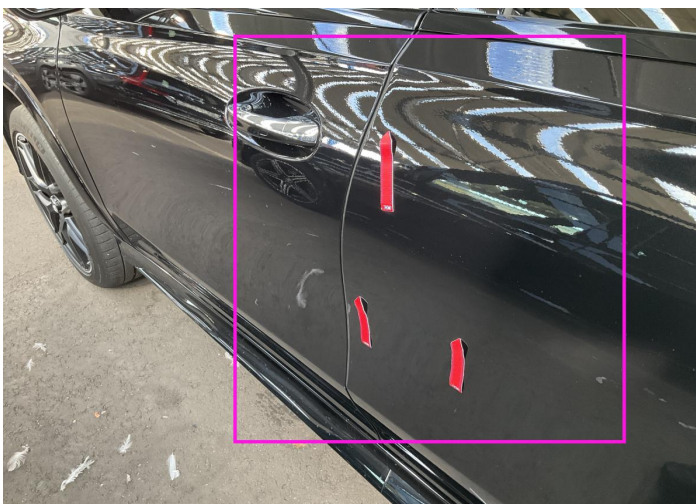
3. Mirror Repeater / Left  
Bodywork / Breakage / Crack -



4. Door / Front Left  
Paint / Scratch / Scuff -

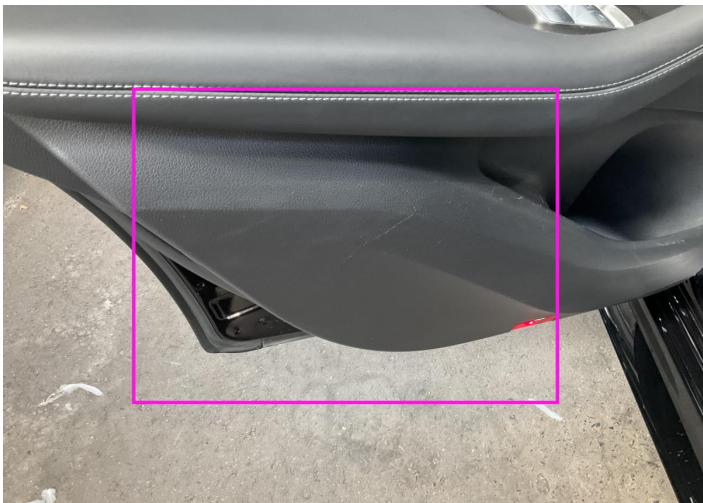


5. Panel Filling / Front Left  
Interior / Scratched -

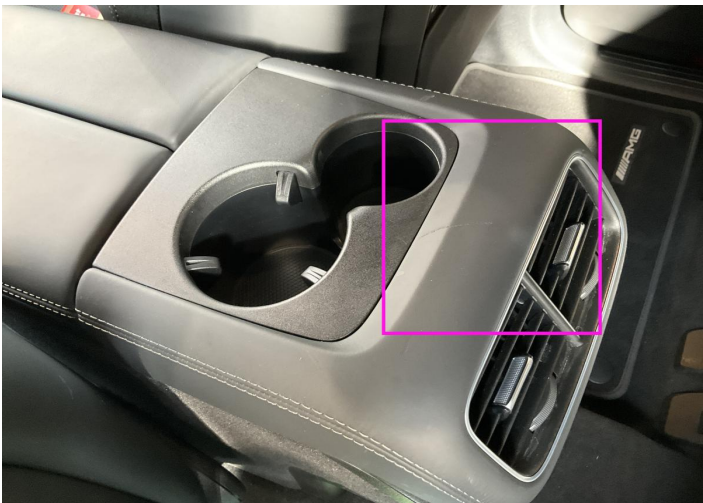


6. Door / Back Left  
Paint / Scratch / Scuff -





7. Panel Filling / Back Left  
Interior / Scratched -



8. Center Console  
Interior / Scratched -



9. Rim / Back Right  
Out of Bodywork / Scratch -



10. Door / Back Right  
Paint / Scratch / Scuff -



11. Door / Front Right  
Paint / Scratch / Scuff -



12. Rim / Front Right  
Out of Bodywork / Scratch -



## Mechanical Condition

### Equipments Test

Central Locking	✓	Electric Windows	✓
Audio Equipment	✓	AC / Heating System	✓
Main & Spare Keys Functioning	✓	Navigation System	✓
Parking Sensors / Cameras Functioning	✓	Other Equipments	✓

### Control Lights

ABS Warning Light	✓	ESP Fault/Traction Control Malfunction Light	✓
Airbag Warning Light	✓	Oil Pressure Warning Light	✓
Brake Warning Light	✓	Power Steering Warning Light	✓
Alternator / Battery	✓	All - wheel Drive	✓
No Dashboard Lights	✓	Display Defect	✓
Service Light	✓	Tire Pressure Monitoring System	✓

### Engine

Engine Status / EML	✓	Engine Leak Visible	✓
Engine Starts	✓		

### Gearbox

Gear Box	✓
----------	---

### Levels

Brakes Fluid	✓	Coolant Fluid	✓
--------------	---	---------------	---

Test Drive Inspection

Steering Wheel			
Steering   Noise / Anomaly		✓	
Engine			
Engine Noise	✓	The Gears Scratch / Skip / Abnormal Operation	✓
Fume Quantity	✓	Power Loss	✓
Brake			
Brake System Anomaly		✓	
General			
Test Driven Status		✓	
✓ <i>No troubles detected, good condition or correct tests, according to vehicle age and mileage</i>			
! <i>Damages or malfunction detected that requires repairs by the buyer</i>			
NA <i>Not applicable</i>			
= <i>Not tested</i>			

Disclaimer

Please also note the "UserGuide condition report", which shows the scope of the vehicle description.

[User Guide](#)