



MERCEDES GLA II
GLA 250 e 8G-DCT Progressive Line

VIN NO W1N4N8FB2SJ624608
Registration Number GX407HQ



MOT Date	Number of Owners	Number of Keys	Odometer Reading
-	-	2	25843 km
Last Service	Last Service Mileage	First Registration Date	Country First Registered
-	-	2024-06-04	-

Inspection Report Summary

Customer	BCAauto Encheres	Report Number	P20250902083649
Inspection Date / Place	2025-09-02 / BCA TOULOUSE	Cosmetic Grade	2

Vehicle Summary

Vehicle Condition	Runner	VAT Type	Qualified - Normal Rate
Fuel Type	Plug - in Hybrid Electric Vehicle Petrol	Gearbox Type	Auto clutch
Colour	Black	Engine Size (cc)	1332
Engine Size	1.3	No of Doors	5
Body Type	Hatchback	Drive Train	Front
Seat Colour		No of Seats	5
Charging Cables		WLTP CO2 Emissions	25

Vehicle History & Documents

Service Book Available	Missing	Next Service Mileage	km
Previous Usage	Normal Use	Imported	
Manufacturer Warrenty			







Equipment

Central locking	Rear parking sensors	Electric Tailgate	Cruise control
Power assisted steering	Satellite navigation	Radio	Alloys wheels
Stability control	Front parking sensors	Roof rails	

Equipment Details

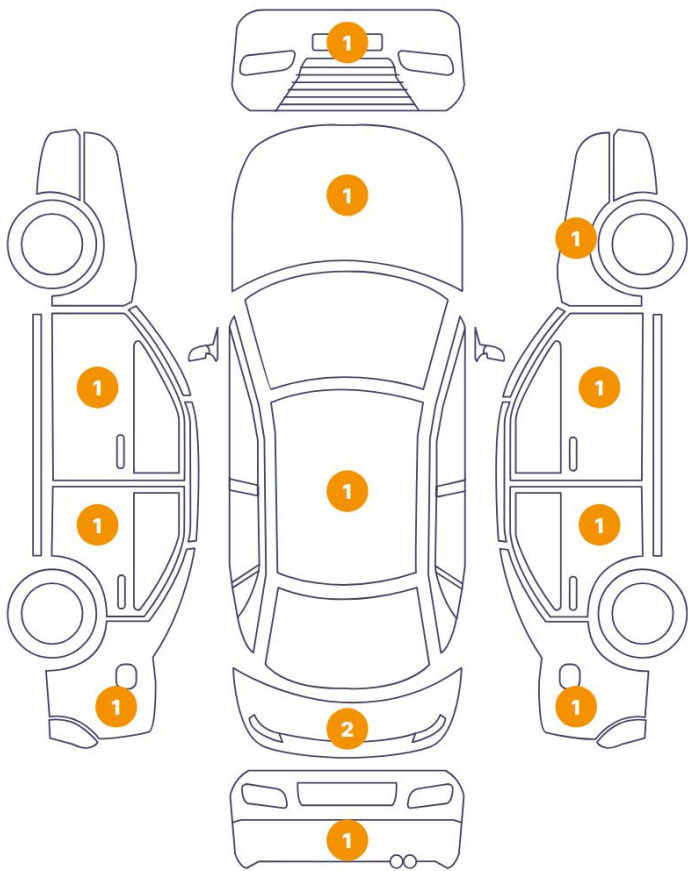
Seat Heating	No	Air Conditioning	Yes
Sunroof Type	Tilt/Slide Steel		

Wheels & Tyres

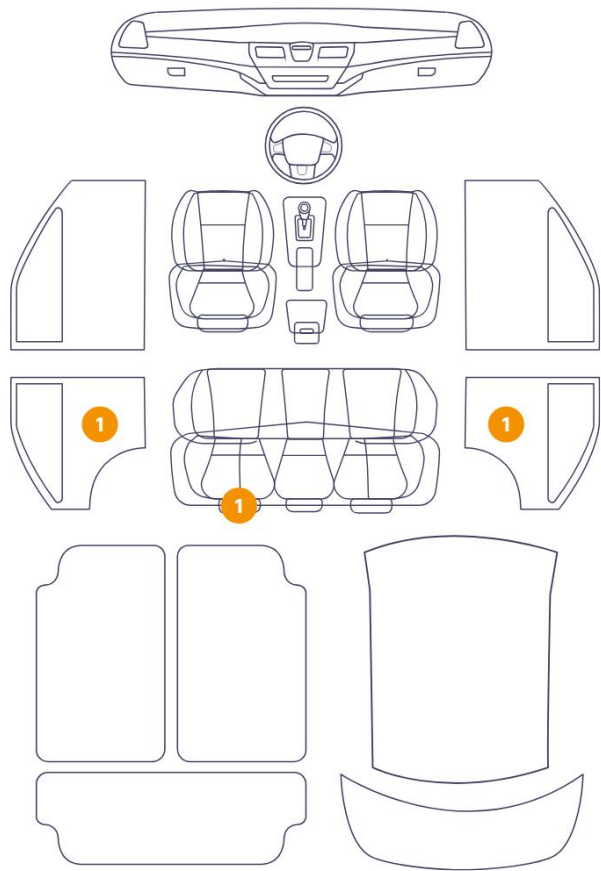
Left Rear Tyre Depth	5	Left Front Tyre Depth	4
Right Rear Tyre Depth	5	Right Front Tyre Depth	4

Cosmetic Damage

13 Dommages



3 Dommages



Component		Damage	Comments
1	Panel Filling / Back Left	Interior / Scraped	
2	Belt / Back Left	Interior / Scratched	
3	Panel Filling / Back Right	Interior / Scraped	
4	Door / Front Left	Paint / Scratch / Line	
5	Door / Back Left	Paint / Scratch / Line	
6	Side Panel / Back Left	Paint / Scratch / Line	
7	Corner Bumper / Back Left	Paint / Scratch / Line	
8	Roof	Bodywork / Dent / Dent	
9	Tailgate	Paint / Scratch / Line	
10	Tailgate	Bodywork / Dent / Dent	
11	Side Panel / Back Right	Bodywork / Dent / Dent	
12	Side Panel	Paint / Scratch / Line	

13	Door Handle / Front Right	Paint / Scratch / Line
14	Fender / Front Right	Paint / Scratch / Line
15	Corner Bumper / Front Left	Paint / Scratch / Line
16	Hood	Paint / Stone Chip



1. Panel Filling / Back Left
Interior / Scraped -



2. Belt / Back Left
Interior / Scratched -



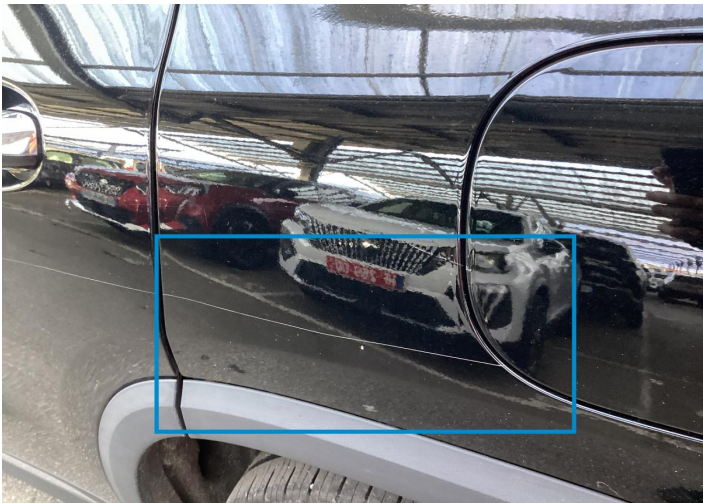
3. Panel Filling / Back Right
Interior / Scraped -



4. Door / Front Left
Paint / Scratch / Line -



5. Door / Back Left
Paint / Scratch / Line -



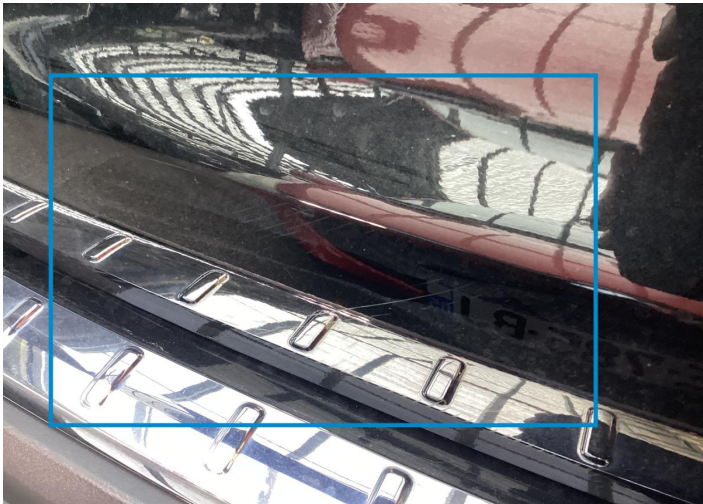
6. Side Panel / Back Left
Paint / Scratch / Line -



7. Corner Bumper / Back Left
Paint / Scratch / Line -



8. Roof
Bodywork / Dent / Dent -



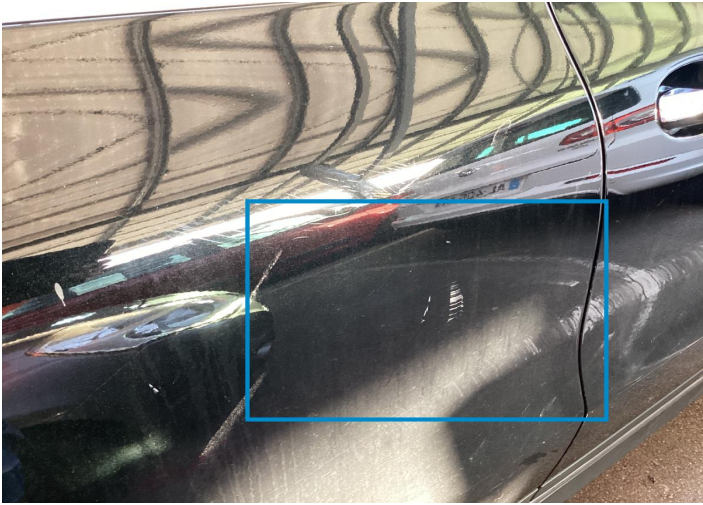
9. Tailgate
Paint / Scratch / Line -



10. Tailgate
Bodywork / Dent / Dent -



11. Side Panel / Back Right
Bodywork / Dent / Dent -



12. Side Panel
Paint / Scratch / Line -



13. Door Handle / Front Right
Paint / Scratch / Line -



14. Fender / Front Right
Paint / Scratch / Line -



15. Corner Bumper / Front Left
Paint / Scratch / Line -



16. Hood
Paint / Stone Chip -

Mechanical Condition

Levels

Coolant Fluid - Condition	✓	Oil - Condition	NA
Level - Oil	Not available	Coolant Fluid	✓
Brakes Fluid	✓		

Engine

Cross Member	✓	Serpentine Belt	NA
Control Liquid Leak	✓		

Tyres

Presence Anti-Theft Lock Nut 

Dashboard Lights

ABS Warning Light	✓	Diesel Particulate Filter Light	✓
ESP Fault/Traction Control Malfunction Light	✓	4WD Light	NA
Dashboard Working	✓	Engine Light	✓
Oil Pressure Warning Light	✓	Airbag Warning Light	✓
Brake Warning Light	✓	Level - Fuel / Battery	25
Transmission Warning Light	✓	Service Light	✓
Steering Fluid Level	NA		

Equipments Test

Main & Spare Keys Functioning	✓	Electric Windows	✓
Convertible, Sunroof, Wagon, Flatbed truck, Tailgate electrics test	✓	Dump / Trail / Tail Gate Lift	NA
Central Locking	✓	Audio Equipment	✓
Navigation System	✓	AC / Heating System	✓
Parking Sensors / Cameras Functioning	✓		

Hybrid/EV

Charge Port Condition	✓	Charge lead 1 condition / Charge lead 2 condition	✓
-----------------------	---	---	---

Hybrid System Fault ✓

Test Drive Inspection

Test Drive			
Engine functioning	✓	Engine / Aux Belt / Pulley Noise	NA
Vehicle Starts	✓	Steering Noise/Gripping	✓
Engine Power	✓	Smoke Quantity	✓
Clutch Functioning	✓	Transmission	✓
Steering	✓	Brakes Functioning	✓
✓ No troubles detected, good condition or correct tests, according to vehicle age and mileage			
! Damages or malfunction detected that requires repairs by the buyer			
NA Not applicable			
☐ Not tested			

Disclaimer Section

The test drive is done on a flat surface and lasts about 2 minutes. The driven distance is a minimum of 300 meters, including a u-turn, an acceleration and a braking phase. The highest speed achieved during this test is 50km/h. The mechanical check is a visual and dynamic diagnosis without any disassembly. We cannot guarantee any mechanical wear part.