



Expertise

Protocol number: 41416150  
Order No. / Reference: 25123319  
Inspection date: 8 Sept 2025

Manufacturer: Mercedes-Benz  
VIN: W1N4N1AB6RJ565328

Model: GLA 180 d 8G-DCT Entry



Vehicle details	
Manufacturer / Type / Model / Equipment	
Mercedes-Benz GLA 180 d 8G-DCT Entry	
Vehicle Identification number	W1N4N1AB6RJ565328
Mileage (Read)	79,594 km
First registration	5 Dec 2023
Number of holders	1
Power / Engine displacement	85 kw / 1,950 ccm
Fuel type / Cylinder	Diesel / 4
Gearbox / Number of gears	Automatic / 8
Type of drive	Front drive
Type of vehicle	SUV
Colour / colour code	Mountaingrau Metallic
Doors / Seats	5 / 5
Upholstery type	Artificial leather
Colour of upholstery	Black-Anthracite
Vehicle with smoke odor	no



## Vehicle details

<b>Maintenance booklet / proof</b>	digital proof / complete	<b>Next maintenance in</b>	139 Tag(e)
<b>Last maintenance on / at</b>	01/2025 at 71,155 km		
<b>Key is / should be</b>	2 / 2	<b>FZG documents</b>	ZB#2 (B) was available (copy), ZB#1 (S) was not available
		<b>Letter No.</b>	GY515266
<b>Previous damage / Accident</b>	None detectable	<b>Repainting</b>	None detectable
<b>Inspection conditions</b>	sufficient	<b>Lifting equipment / pit</b>	yes
<b>Test drive</b>	Not performed	<b>Engine function test</b>	Performed
<b>Manufacturer key number/ type code number</b>	2222 / ATH 00075		
<b>Emission standard</b>	EURO6;WLTP;AP;PI/CI; M, N1 I	<b>Fine dust sticker</b>	
<b>Permitted total weight</b>	2,160 kg	<b>Empty weight</b>	

## Tyres

### Mounted tyres

#	Tyre size	Type of tyre	Manufacturer	Tread depth
1)	215/65 R17 99V	Summer tyres on Light alloy	Continental	5mm / 5mm
2)	215/65 R17 99V	Summer tyres on Light alloy	Continental	6mm / 6mm

### Additional tyres

#	Tyre size	Type of tyre	Manufacturer	Tread depth
1)	215/65 R17 99H	Winter tyres on Light alloy	Michelin	5mm / 5mm
2)	215/65 R17 99H	Winter tyres on Light alloy	Michelin	7mm / 7mm

### Replacement

Typ	Tyre size	Type of tyre	Manufacturer	Tread depth
	Tirefit	Expiration date 12/2028		

**Legend:** Tread depth information for tires on the left is in the first place, for tires on the right is in the second place on the axle in the direction of travel

## Equipment

### Standard equipment

- Storage compartment in center console with roller blind
- Adaptive High Beam Assistant
- Airbag for driver and front passenger
- Airbag: Sidebag for driver and front passenger
- Active Brake Assist
- Anti-lock braking system (ABS)
- Armrest in center console for driver and front passenger with integrated storage compartment
- Exterior mirrors left and right heated, electrically adjustable from the inside
- Roof rails in polished aluminum
- Double cup holder
- Third brake light in LED technology
- ECO start-stop function
- Electronic Stability Program (ESP)
- 4-way electric window lifter
- Windscreen laminated glass
- Luggage net on driver and passenger backrest
- Transmission: 8G-DCT dual clutch transmission automatic 8-speed
- Interior headliner fabric crystal grey
- Mechanical child safety lock
- Communication module (LTE) for the use of Mercedes me connect services
- LED high-performance headlights
- Steering column mechanically adjustable in height and length
- Mercedes-Benz emergency call system
- Navigation accessories: Pre-installation for Live Traffic Information
- Package: Entry
- Package: Light and Vision Package
- Package: USB Package Plus
- Radio: MBUX multimedia system
- Radio accessories: Digital radio
- Remote Services
- Rear view camera
- Windscreen wipers with rain sensor
- Seats: Comfort seats
- Seat heating for driver and front passenger
- TIREFIT with tire inflation compressor
- High-visibility vest for drivers
- Heat-insulating glass, green all around
- Decorative elements Star Pattern
- ADAPTIV BRAKE with HOLD function, hill start assist, pre-filling and dry braking in wet conditions
- Airbag: Kneebag for driver
- Airbag: Windowbags
- Active Lane Keeping Assist
- Traction control (ASR)
- ATTENTION ASSIST
- Automatic passenger airbag deactivation
- Outside temperature display
- Basic services
- diesel particulate filter
- tachometer
- DYNAMIC SELECT
- Door sills with "Mercedes-Benz" lettering
- Chassis: Comfort chassis with lowering
- Electric parking brake
- Velour floor mats
- Speed Limit Assistant
- Rear window wiper with interval control
- Heated rear window with timer control
- ISOFIX child seat anchorages with TopTether in the rear
- Climate: THERMATIC automatic climate control
- 5-way headrests
- Paint finish: Uni
- Steering wheel: Multifunction sports steering wheel in leather
- Steering: Direct Steering
- Navigation accessories: Advanced functions MBUX
- Navigation: Hard drive navigation
- Navigation: MBUX Navigation Premium
- Package: Cargo space
- Package: Seat comfort
- Upholstery: ARTICO imitation leather/fabric
- Radio accessories: CENTRAL MEDIA DISPLAY 10.25"
- Tire pressure monitoring
- Wheels: 43.2 cm (17") light alloy wheels in 5-twin-spoke design
- GLA-Class seat belts
- Seats: Folding seat backrests in the rear
- Cruise control
- Preparation for digital key handover
- Electronic immobilizer
- Central locking

### Extra equipment



- Paint finish: metallic (according to sample card)
- Package: Winter package (steering wheel heating - seat heating for driver and front passenger - heated windscreen washer system)
- Package: Winter Package Plus with 17" winter complete wheels (winter package with heated steering wheel and heated windshield washer system - 43.2 cm (17") light alloy wheels in 5-twin-spoke design, aerodynamically optimized, painted vanadium silver with 215/65 R17 on 6.5J x 17 ET44)
- Partition net (This feature can protect you from insufficiently secured items in the luggage compartment. The partition net is very easy to use. You can attach or remove it in just a few steps.)
- Package: Entry Advanced (4-way lumbar support - Mirror package (automatically dimming interior mirror, electrically folding exterior mirrors) - Parking package with rear view camera (Active Parking Assist with PARKTRONIC) - EASY-PACK tailgate (electrically opening and closing tailgate, switch for electrically opening the tailgate in the driver's door, switch for electrically closing the tailgate on the lower edge of the tailgate, manual load compartment blind to cover the load compartment))
- Phone accessories: Smartphone integration (consisting of Apple CarPlay and Android Auto)
- Traffic Sign Assistant 513
- Fully digital instrument display (high-resolution 10.25" display)

## Brief expert findings

Documents submitted	At the time of the inspection, the registration certificate Part 2 (letter) was available, but the registration certificate Part 1 (certificate) was not. (Copy)
VIN comparison	The vehicle identification number (VIN) was read from the vehicle and its conformity with the submitted documents was verified during the inspection by the undersigned.
Inspection	The inspection conditions were sufficient for the assessment of the vehicle. Lifting equipment and a pit were available for examining the vehicle.
Test drive	No test drive/maneuvering was carried out during the inspection of the vehicle.
Engine function test	An engine test run was performed.

## Wear and tear

No.	Component group	Description
1	Front bumper	Front bumper - Stone chips - No deduction
2	Interior	Interior - Soiled - No deduction
3	Bonnet	Bonnet - Stone chips - No deduction
4	Rear bumper	Rear bumper - Scratch(es) - No deduction
5	Vehicle glazing	Windscreen - Stone chips - No deduction

The vehicle shows signs of wear commensurate with its age and use.

## Order/Scope of order

The order was placed to prepare a sales report for the vehicle described. This includes the following:

- Description of core relevant information about the vehicle
- Documentation of equipment features  
(Delivery by third-party service providers)
- Documentation of damage, defects, missing parts
- Documentation of previous damage, unrepaired previous damage, repainting
- a brief visual or functional inspection of the equipment details if possible.  
(Functional tests of driver assistance systems are not included in the scope of services!)
- a photo documentation of the vehicle



## Basis for the order

This product is based on the Alphabet Fuhrpark GmbH guidelines for vehicle returns and valuations. The expert makes the explicit findings in each individual case objectively within the framework of the specified standards based on his or her own expertise.

The vehicle inspection takes place in a disassembled state.

Damage or defects that can only be detected during disassembly/diagnosis work or through advanced knowledge remain within the scope of the prognosis risk. An extended risk exists for concealed defects caused by fraudulent deception and not identifiable by the expert.

Damage or defects resulting from normal use or wear and tear of the vehicle will be accepted according to the applicable standard.

There was no explicit identification or monetary consideration of the expected features within the product.

Features which in their nature and severity slightly exceed normal use but do not constitute unacceptable damage will be documented and identified under signs of use if necessary.

Damage or defects which, according to the underlying standard, can no longer be attributed to normal use or wear and tear are listed in the product under "Depreciating Factors".

Depending on the product specification, a monetary ID can be provided. If this takes place, the costs can be 100% d or pro rata depending on the vehicle's age and mileage.

## Previous damages

Apparently, no repaired previous damage could be found on the vehicle.





Figure 1: Diagonal front (left)



Figure 2: Diagonal front (right)



Figure 3: Diagonal rear (left)



Figure 4: Diagonal rear (right)



Figure 5: Interior - front



Figure 6: Interior - rear





Figure 7: Instrument cluster



Figure 8: Instrument panel



Figure 9: Interior 360° view



Figure 10: Cargo area



Figure 11: VIN



Figure 12: Mounted tyres





Figure 13: Documents



Figure 14: Documents



Figure 15: Additional tyres

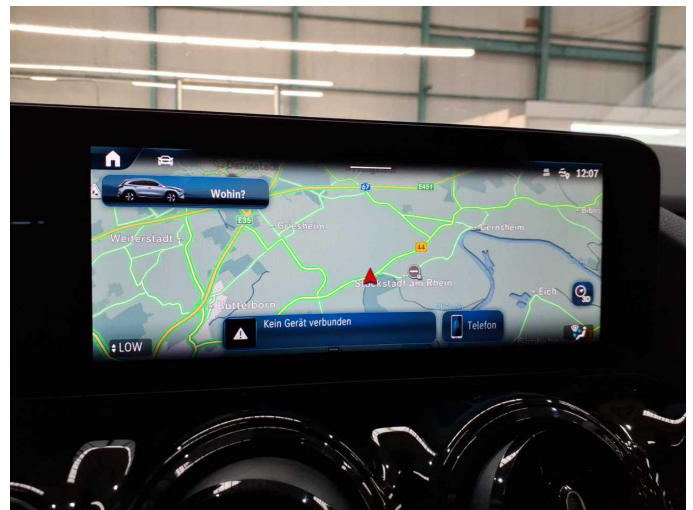


Figure 16: Navigation



Figure 17: Misc.



Figure 18: Misc.



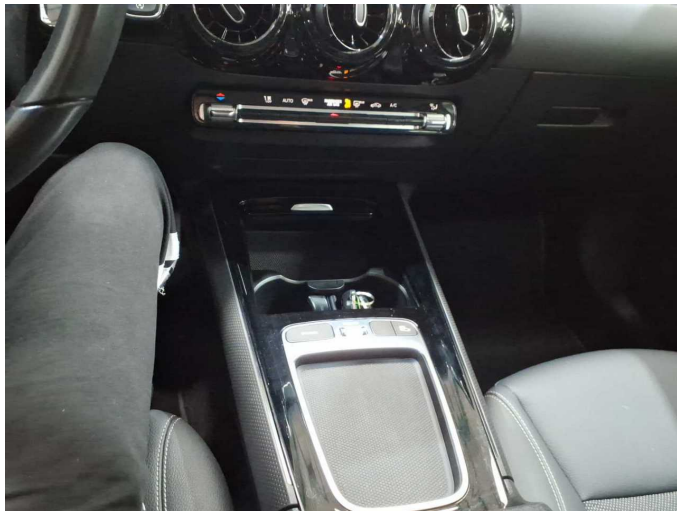


Figure 19: Misc.

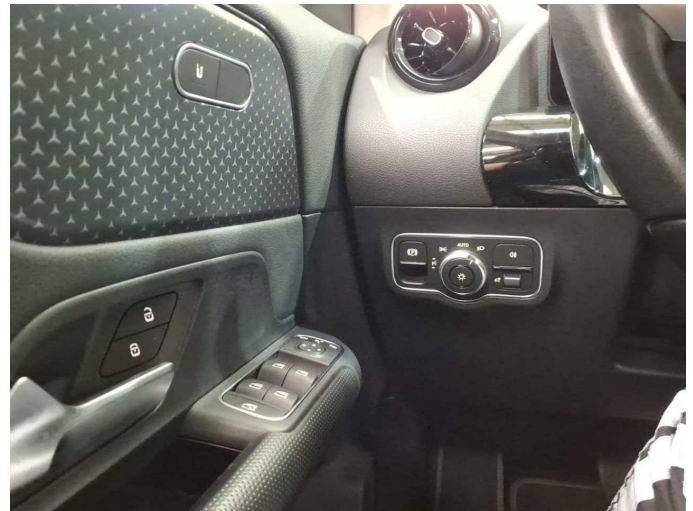


Figure 20: Misc.



Figure 21: Misc.



Figure 22: Misc.

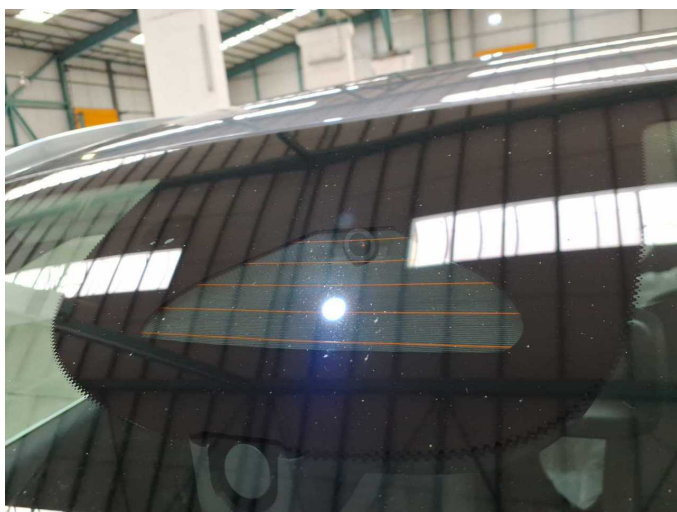


Figure 23: Misc.



Figure 24: Misc.



Figure 25: Misc.

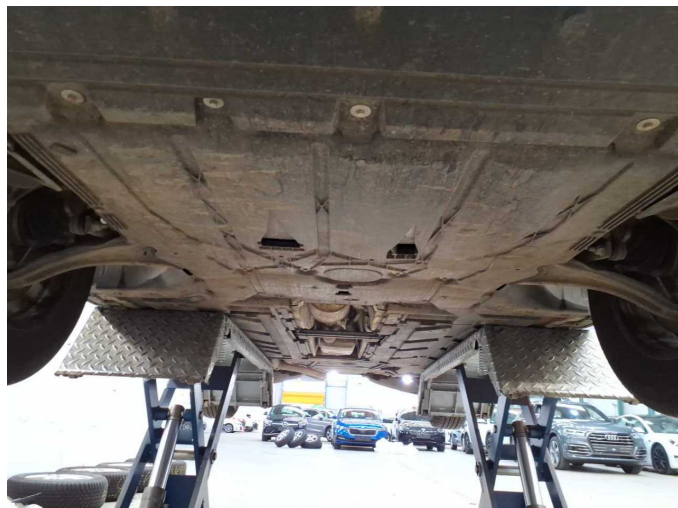


Figure 26: Misc.



Figure 27: Misc.



Figure 28: Misc.