



Expertise

Protocol number: 41504543
Order No. / Reference: 24975235
Inspection date: 11 Sept 2025

Manufacturer: Mercedes-Benz
VIN: W1N4M1FB9RW377644

Model: GLB 220 d 4Matic 8G-DCT AMG Line Advanced Plus



Vehicle details	
Manufacturer / Type / Model / Equipment	
Mercedes-Benz GLB 220 d 4Matic 8G-DCT AMG Line Advanced Plus	
Vehicle Identification number	W1N4M1FB9RW377644
Mileage (Read)	20,005 km
First registration	13 Feb 2025
Number of holders	1
Power / Engine displacement	140 kw / 1,950 ccm
Fuel type / Cylinder	Diesel / 4
Gearbox / Number of gears	Automatic / 8
Type of drive	All-wheel drive
Type of vehicle	SUV
Colour / colour code	NACHTSCHWARZ UNILACK
Doors / Seats	5 / 5
Upholstery type	Alcantara / Leather
Colour of upholstery	Black
Vehicle with smoke odor	no



Vehicle details

Maintenance booklet / proof	digital proof / incomplete	Next maintenance in	163 Tag(e)
Key is / should be	2 / 2	FZG documents	ZB#2 (B) was available (copy), ZB#1 (S) was not available
		Letter No.	HB250993
Previous damage / Accident	None detectable	Repainting	None detectable
Inspection conditions	sufficient	Lifting equipment / pit	yes
Test drive	Not performed	Engine function test	Performed
Manufacturer key number/ type code number	2222 / AHW 00230		
Emission standard	EURO6;WLTP;AP;PI/CI; M, N1 I	Fine dust sticker	
Permitted total weight	2,290 kg	Empty weight	

Tyres

Mounted tyres

#	Tyre size	Type of tyre	Manufacturer	Tread depth
1)	235/45 R20 96W	Summer tyres on Light alloy	Bridgestone	5mm / 5mm
2)	235/45 R20 96W	Summer tyres on Light alloy	Bridgestone	5mm / 5mm

Additional tyres

#	Tyre size	Type of tyre	Manufacturer	Tread depth
1)	235/50 R19 99H	Winter tyres on Light alloy	Bridgestone	7mm / 7mm
2)	235/50 R19 99H	Winter tyres on Light alloy	Bridgestone	7mm / 7mm

Replacement

Typ	Tyre size	Type of tyre	Manufacturer	Tread depth
Tirefit		Expiration date 04/2029		

Legend: Tread depth information for tires on the left is in the first place, for tires on the right is in the second place on the axle in the direction of travel

Equipment

Standard equipment

- Center console storage compartment with roller blind (The roller blind for the center console storage compartment offers elegant privacy made of high-quality material. It looks good, makes the interior appear even tidier, and keeps everything important within easy reach. The practical storage compartment accommodates typical everyday items such as a smartphone, wallet, or various keys.)
- Active Lane Keeping Assist
- Ambient lighting (in 64 colors, all colors can be selected individually - eight color schemes consisting of two colors each - the colors are static or slowly swap with each other in dynamic mode - the brightness of the LEDs can be adjusted in ten levels and three zones - the interior of the air vents is finished in silver chrome and illuminated - AMG Line and Progressive: additional lighting for the instrument panel piping above the trim and in the doors)
- ATTENTION ASSIST (can detect typical signs of fatigue through steering behavior and can warn the driver of impending microsleep)
- Basic services (accident and breakdown management, maintenance management, telediagnosis, remote vehicle diagnosis, software update (model-dependent), individual consumption display in the app)
- diesel particulate filter
- tachometer
- DYNAMIC SELECT (Simply drive the way you want. DYNAMIC SELECT offers various driving programs at the touch of a button, predetermining, for example, the engine, transmission, chassis, or steering. Sport mode offers a decidedly dynamic ride, while the basic Comfort mode offers a very balanced ride. ECO, on the other hand, focuses on maximum efficiency, saving fuel and money.)
- Electronic Stability Program (ESP)
- Electric window regulators (4)
- Speed Limit Assist (The Speed Limit Assist makes it easy for you to comply with speed limits and avoid unnecessary fines. The system shows you what's permitted: It can detect the current speed limit via the camera and display it in the instrument cluster. It also detects additional speed limit signs for special weather conditions, such as wet conditions.)
- Communication module (LTE) for the use of Mercedes me connect services (communication module with permanently installed SIM card of the LTE mobile communications standard - two mobile communications antennas)
- Paint finish: Uni
- LED High Performance Headlights (LED High Performance Headlights offer greater safety at night and a distinctive, striking look. Thanks to LED technology, they illuminate the road better than conventional headlights – while consuming less energy.)
- Steering column mechanically adjustable for length and height
- Adaptive High Beam Assistant
- Airbag for driver and front passenger
- Airbag: Kneebag for driver
- Airbag: Sidebag for driver and front passenger (combined thorax/pelvis bag)
- Airbag: Windowbags
- Active Brake Assist
- 4MATIC all-wheel drive
- AMG floor mats (in black with "AMG" lettering)
- AMG sports pedal system (brushed stainless steel with rubber studs)
- AMG Styling (AMG front apron with chrome front splitter - AMG rear apron with diffuser look - chrome trim element and two visible tailpipe trims)
- Anti-lock braking system (ABS)
- Armrest in the rear
- Automatic passenger airbag deactivation
- Heated exterior mirrors on the left and right, electrically adjustable from the inside (with aspherically curved mirror glass and integrated indicator light)
- On-board computer
- Beltline trim strip in silver chrome
- Roof rails in polished aluminum
- Double cup holder
- Third brake light in LED technology
- EASY-PACK tailgate (electrically opening and closing tailgate - switch for electrically opening the tailgate in the driver's door - switch for electrically closing the tailgate on the lower edge of the tailgate - manual load compartment blind to cover the load compartment)
- ECO start-stop function
- Door sills with "Mercedes-Benz" lettering
- Chassis: Comfort chassis
- Luggage net on driver and passenger backrest
- Transmission: 8G-DCT dual clutch transmission automatic 8-speed
- Rear window heated
- Rear window wiper
- Interior headliner fabric crystal grey
- Climate: THERMATIC automatic climate control (1-zone air conditioning - automatically controlled air distribution - recirculation function - tunnel mode in conjunction with navigation system - fine dust filter)
- Headrests (2)
- Rear headrests (3)
- Fuel tank with larger volume 60 l
- Load compartment cover (roller blind) (can be stowed under the loading floor)



- Mercedes-Benz Emergency Call System (The Mercedes-Benz Emergency Call System can provide a decisive time advantage in an emergency. When an accident is detected, a communication module with its own SIM card automatically triggers an emergency call, which can shorten the time until emergency services arrive. The emergency call can also be triggered manually to organize assistance.)
- Package: AMG Line Advanced Plus (00U Remote Services 840 Heat-insulating dark-tinted glass 873 Heated seats for driver and front passenger 942 Cargo compartment package 950 AMG Line B51 TIREFIT PBG MBUX Navigation Premium PDB Advanced Plus package 250 Customization package)
- Package: Light and visibility package (roof control unit 4 light blocks (including glasses compartment) - interior light/reading light rear in mounting plate (rear/left/right) - touchpad lighting (front) - reading lights (front/left/right), console lighting - make-up lights (front/left/right) - signal and ambient light - signal exit light (front/left/right) - footwell lighting (front/left/right) - cup holder/storage compartment lighting - spontaneous storage compartment lighting)
- Package: Mirror package (exterior mirrors electrically fold in and out via a button on the driver's door control panel - the menu can be used to set the exterior mirrors to automatically fold in when the vehicle is locked and unfold again when unlocked - the exterior mirror on the driver's side and the interior mirror automatically dim continuously depending on the glare and ambient light)
- Upholstery: ARTICO man-made leather/MICROCUT microfiber
- Tire pressure monitoring (TPMS)
- Rear view camera
- Windscreen wipers with rain sensor
- Power steering
- Seats: Folding rear seat backrests (40/20/40 ratio and adjustable in 7 tilt positions)
- Socket (12 V) in center console
- Cruise control (Drive in a relaxed and fuel-efficient manner, especially on longer journeys. Select your desired speed, and your vehicle will automatically control the speed. In addition to maintaining your cruising speed, the speed limiter helps you maintain a maximum speed. This increases road safety and protects you from expensive fines.)
- Fully digital instrument display (high-resolution 10.25" display)
- High-visibility vest for drivers
- Immobiliser
- Carbon structure trim elements
- Steering wheel: Multifunction sports steering wheel in nappa leather (The multifunction sports steering wheel in nappa leather with chrome control panels has a flattened bottom and perforated grips—an excellent qualification for sporty driving. The touch control buttons on the left and right, among others, operate a variety of functions, including navigation, telephony, and entertainment. Last but not least, you can adjust the cruise control and distance control: Everything under control without taking your hands off the steering wheel.)
- Bonnet with power domes
- Navigation accessories: Advanced MBUX functions (personalization (profiles) and prediction functions - LINGUATRONIC with natural language understanding - activation via "Hey Mercedes" - Wi-Fi hotspot - Internet radio)
- Package: KEYLESS-GO Convenience (vehicle key with KEYLESS-GO functionality - KEYLESS-GO access and drive authorization system - start/stop button - convenient opening and closing - door handles with chrome inserts - HANDS-FREE ACCESS - handle recess illumination - remote trunk lid closing - EASY-PACK luggage compartment lid)
- Package: Seat comfort (passenger seat height adjustment - seat cushion angle adjustment for the driver and passenger seats - seat cushion depth adjustment for improved seating comfort through a 60 mm extended thigh support area - specific seat design)
- Package: USB Package Plus (1 USB-C port in the storage compartment in the front part of the center console, capable of fast charging and data transfer; 2 USB-C ports under the front center armrest, capable of fast charging and data transfer; 2 USB-C ports for the rear compartment on the center armrest, capable of fast charging; 12 V socket in the storage compartment in the front part of the center console)
- Radio accessories: Digital radio
- Wheels: 48.3 cm (19") AMG light-alloy wheels in 5-twin-spoke design (aerodynamically optimized, painted tantalum gray with a high-sheen finish, 235/50 R19 with 7.5 J x 19 ET 53)
- Seats: Folding rear seat backrests (40/20/40 split)
- Seats: Sports seats (with adjustable headrest)
- Telephone accessories: Wireless charging system for mobile devices (wireless charging according to the Qi standard for compatible mobile phones - fast connection between the multimedia system and mobile phone via Near Field Communication (NFC) for identification of the mobile device - storage for wireless charging is located in the spontaneous storage compartment in the front of the center console)
- Pre-installation for digital key transfer (Share your vehicle with friends and family members more easily than ever before – no matter where you are. You retain full control and conveniently decide via the app whether you agree to their use. You can also unlock your vehicle remotely via the mobile application. Only then will a stored key be activated. Service available free of charge for 3 years from activation.)



Extra equipment

- Airbag: Sidebag in the rear
- Elimination of type marking on luggage compartment lid
- Interior headliner fabric black
- Package: AMG Line Premium Plus (Head-up Display - MBUX Interior Assistant - MULTIBEAM LED - Parking package with 360° camera - Electrically adjustable driver's seat with memory function - Electrically adjustable right front seat with memory function - Panoramic sunroof - Ambient lighting with projection of the brand logo)
- Package: Night (AMG Line) (Exterior mirror housings painted in high-gloss black. (Heat-insulating dark-tinted glass from the B-pillar onwards - Central Mercedes star and individual radiator grille louvers in high-gloss black - AMG rear apron with visible tailpipe trim and trim element in high-gloss black - Roof rails in black - Beltline and window line trim strips in high-gloss black - 48.3 cm (19") AMG 5-twin-spoke light-alloy wheels (RTG), painted black, 235/50 R19 on 7.5J x 19 ET53)
- Package: Winter Package Plus with 19" winter complete wheels (winter package with heated steering wheel and heated windshield washer system - 48.3 cm (19") light alloy wheels in 5-twin-spoke design, aerodynamically optimized, painted black with a high-sheen finish with 235/50 R19 on 7.5J x 19 ET53)
- Phone accessories: Smartphone integration (supports Android Auto and Apple CarPlay - display of selected third-party apps - access to current software and data, e.g., for navigation, traffic information, contact information, messaging, telephony, media, IP radio - prepared and optimized user interface for driving - control of smartphone functions via voice control)
- Seats: Adjustable rear seats (A multi-talent – with the longitudinal adjustment of the rear seats, you can transform your vehicle from a small space miracle for rear passengers to a compact premium transporter in just a few moments. If necessary, you can slide the entire rear seat forward by up to 90 millimeters and backward by 50 millimeters.)
- Star Pattern decorative elements backlit
- Steering: Direct Steering
- Trailer hitch with ESP trailer stabilization
- Wheels: 50.8 cm (20") AMG light-alloy wheels in multi-spoke design (aerodynamically optimized, painted black with high-sheen rim flange with 235/45 R20 on 8.0J x 20 ET48)
- Wheels: Summer complete wheels fitted ex works
- Auxiliary heating (The auxiliary heating heats or ventilates the interior as desired before you even get in. A comfortable climate with clear windows at all times in winter, eliminating the stress and hassle of defrosting. It's as if your car were parked in a garage instead of under a lamppost—completely independent of a running engine.)
- Climate: THERMOTRONIC automatic climate control (two zones with individually adjustable temperatures for the driver and passenger sides - automatic control of temperature, air volume, and air distribution (Auto button) - sensors maintain the desired climate constant - fine dust activated carbon filter - dew point sensor prevents fogging of the windows and enables energy-efficient climate control - rear center vents for improved climate comfort in the rear - residual heat button for heating/ventilation when the vehicle is parked (country-dependent))
- Package: Technology with AMG Line Premium Plus (braking system with larger, perforated brake discs on the front axle - suspension with adaptive damping - MULTIBEAM LED - KEYLESS-GO - Driving Assistance package with Active Distance Assist DISTRONIC, Active Steering Assist, Active Emergency Stop Assist with SOS function, Active Brake Assist, turning function with vehicle, pedestrian, and bicycle detection, Evasive Steering Assist, Active Lane Keeping Assist, Blind Spot Assist, and Exit Warning Function)
- Partition net (This feature can protect you from insufficiently secured items in the luggage compartment. The partition net is very easy to use. You can attach or remove it in just a few steps.)
- Radio accessories: Burmester surround sound system (with 12 speakers and 590 watts of system power: - premium midrange speaker as the central speaker - one premium woofer/midrange speaker in each of the front and rear doors - one premium tweeter in each of the front and rear doors (mirror triangles) - two surround midrange speakers in the C-pillar - one subwoofer in the rear - external Class-D DSP amplifier, sophisticated sound optimization - visual enhancement with Burmester logos and chrome frames)
- Traffic Sign Assistant (networked system consisting of a camera behind the windshield and navigation maps - displays speed limits, prohibitions, and their cancellation in the instrument display or media display as well as in the optionally available head-up display - provides a visual and optionally acoustic warning when the speed limit is exceeded; the tolerance threshold can be raised to up to 10 km/h - can detect no-entry signs and issues a visual and acoustic warning)



Brief expert findings

Documents submitted	At the time of the inspection, the registration certificate Part 2 (letter) was available, but the registration certificate Part 1 (certificate) was not. (Copy)
VIN comparison	The vehicle identification number (VIN) was read from the vehicle and its conformity with the submitted documents was verified during the inspection by the undersigned.
Inspection	The inspection conditions were sufficient for the assessment of the vehicle. Lifting equipment and a pit were available for examining the vehicle.
Test drive	No test drive/maneuvering was carried out during the inspection of the vehicle.
Engine function test	An engine test run was performed.

Value reducing factors

No.	Component group	Description
1	Side panel - rear left side	Sill - Scratch(es) - Smart repair

Wear and tear

No.	Component group	Description
1	Vehicle glazing	Windscreen - Stone chips - No deduction
2	Bonnet	Bonnet - Stone chips - No deduction
3	Body	Body - Scratch(es) - No deduction
4	Side panel - rear left side	Side panel - Scratch(es) - No deduction
5	Side panel - rear right side	Side panel - Scratch(es) - No deduction
6	Braking system	Brake fluid - No evidence - No deduction
7	Misc.	Inspection / maintenance - No evidence - No deduction
8	Documents	Service book (Digital) - Missing - No deduction

The vehicle shows signs of wear commensurate with its age and use.

Order/Scope of order

The order was placed to prepare a sales report for the vehicle described. This includes the following:

- Description of core relevant information about the vehicle
- Documentation of equipment features
(*Delivery by third-party service providers*)
- Documentation of damage, defects, missing parts
- Documentation of previous damage, unrepaired previous damage, repainting
- a brief visual or functional inspection of the equipment details if possible.
(*Functional tests of driver assistance systems are not included in the scope of services!*)
- a photo documentation of the vehicle



Basis for the order

This product is based on the Alphabet Fuhrpark GmbH guidelines for vehicle returns and valuations. The expert makes the explicit findings in each individual case objectively within the framework of the specified standards based on his or her own expertise.

The vehicle inspection takes place in a disassembled state.

Damage or defects that can only be detected during disassembly/diagnosis work or through advanced knowledge remain within the scope of the prognosis risk. An extended risk exists for concealed defects caused by fraudulent deception and not identifiable by the expert.

Damage or defects resulting from normal use or wear and tear of the vehicle will be accepted according to the applicable standard.

There was no explicit identification or monetary consideration of the expected features within the product.

Features which in their nature and severity slightly exceed normal use but do not constitute unacceptable damage will be documented and identified under signs of use if necessary.

Damage or defects which, according to the underlying standard, can no longer be attributed to normal use or wear and tear are listed in the product under "Depreciating Factors".

Depending on the product specification, a monetary ID can be provided. If this takes place, the costs can be 100% d or pro rata depending on the vehicle's age and mileage.

Previous damages

Apparently, no repaired previous damage could be found on the vehicle.

Comments

- Winterradsatz ist kein Bestandteil des Auslieferungsumfangs



Figure 1: Diagonal front (left)



Figure 2: Diagonal front (right)



Figure 3: Diagonal rear (left)



Figure 4: Diagonal rear (right)



Figure 5: Interior - front



Figure 6: Interior - rear



Figure 7: Instrument cluster



Figure 8: Instrument panel



Figure 9: Interior 360° view



Figure 10: Cargo area



Figure 11: VIN



Figure 12: Mounted tyres



Figure 13: Documents



Figure 14: Documents



Figure 15: Additional tyres



Figure 16: Navigation



Figure 17: Misc.



Figure 18: Misc.



Figure 19: Misc.

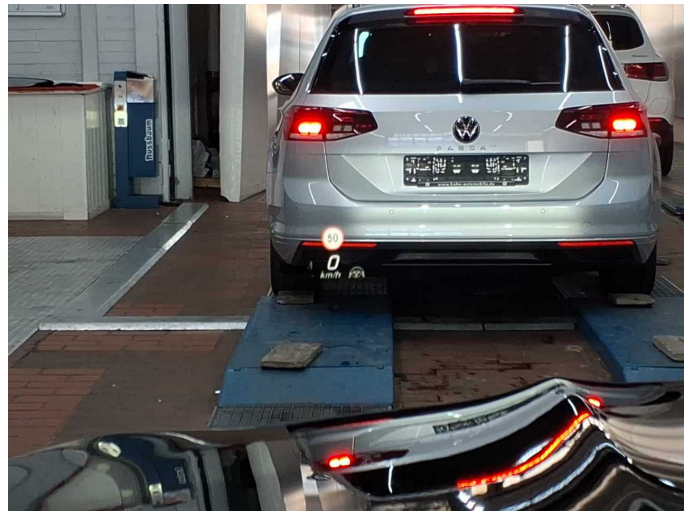


Figure 20: Misc.



Figure 21: Misc.

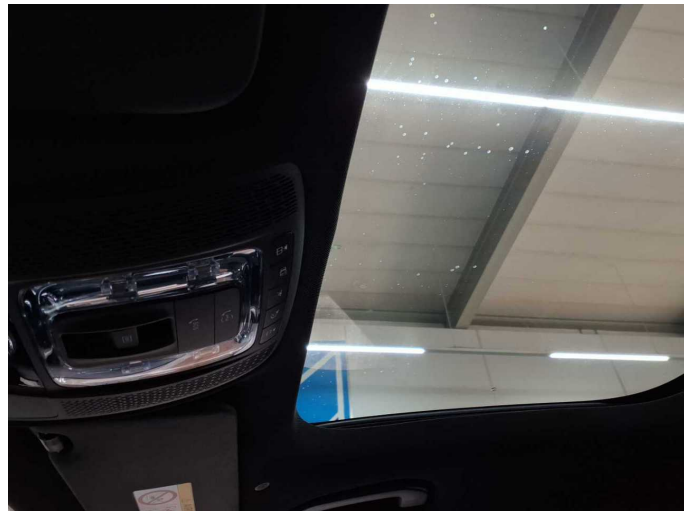


Figure 22: Misc.



Figure 23: Misc.



Figure 24: Misc.



Figure 25: Misc.

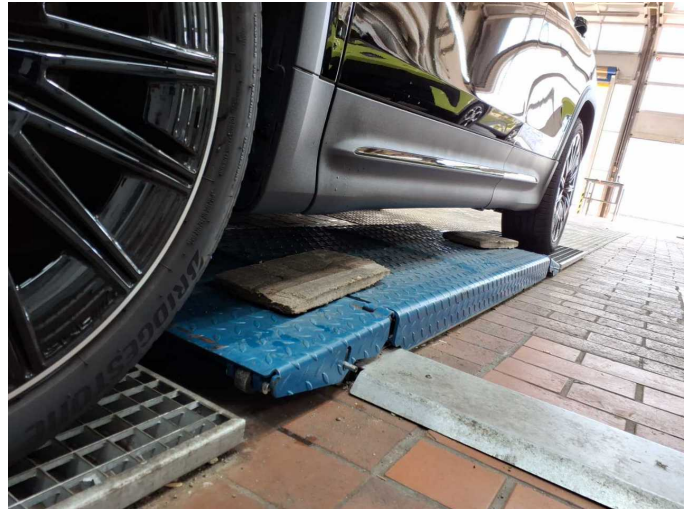


Figure 26: Misc.



Figure 27: Misc.

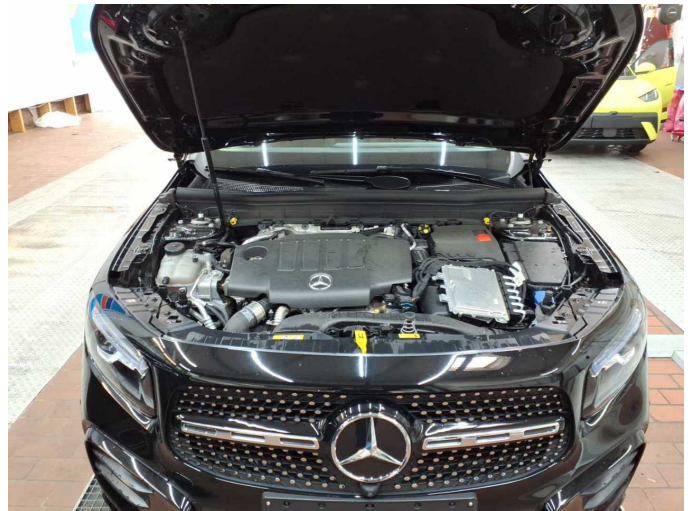


Figure 28: Misc.

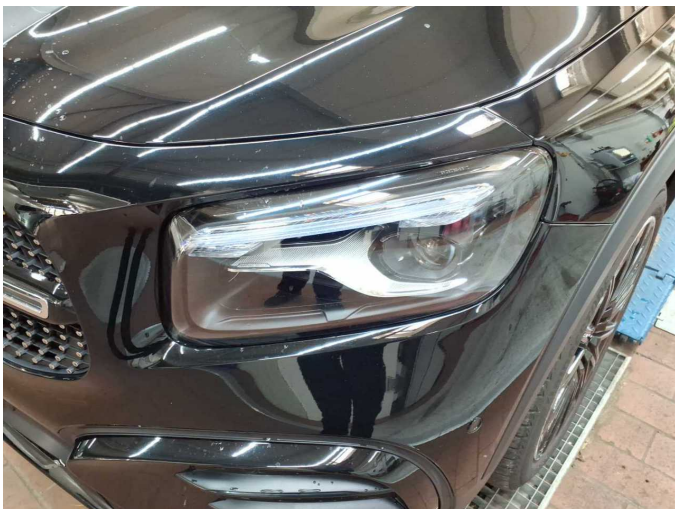


Figure 29: Misc.



Figure 30: Misc.



Figure 31: Misc.



Figure 32: Misc.



Figure 33: Misc.



Figure 34: Misc.



Figure 35: Misc.



Figure 36: Misc.



Damage 1: Side panel - rear left side: Sill - Scratch(es) - Smart repair



Damage 1: Side panel - rear left side: Sill - Scratch(es) - Smart repair



Wear and tear 4: Side panel - rear left side: Side panel - Scratch(es) - No deduction



Wear and tear 4: Side panel - rear left side: Side panel - Scratch(es) - No deduction



Wear and tear 5: Side panel - rear right side: Side panel - Scratch(es) - No deduction



Wear and tear 5: Side panel - rear right side: Side panel - Scratch(es) - No deduction