



MERCEDES-BENZ G-Klasse
G AMG G 63 AMG Speedshift 9G-TRONIC

VIN NO W1N4632761X385913
Registration Number 761X385913



MOT Date	Number of Owners	Number of Keys	Odometer Reading
2026-04-01	1	2	85330 km
Last Service	Last Service Mileage	First Registration Date	Country First Registered
-	-	2021-02-01	Germany

Inspection Report Summary

Customer	BCA Online	Report Number	P20250815134546
Inspection Date / Place	2025-08-15 / ARS Altmann AG Riedstadt	Cosmetic Grade	3

Vehicle Summary

Vehicle Condition	Runner	VAT Type	Qualifying
Fuel Type	Petrol	Road Worthy	Yes
Colour	Black	Engine Size (cc)	3982
Engine Size	4.0	No of Doors	5
Body Type	SUV	Drive Train	All-Wheel-Drive permanent
Seat Colour		No of Seats	5
Seat Covering Name		Seat Covering	Synthetic Leather
Charging Cables		NEDC CO2 Rating (q/km)	330
Gearbox Type	Automatic		

Vehicle History & Documents

Service Book Available	Missing	Next Service Mileage	km
Previous Usage		Imported	No
Manufacturer Warrenty			







Equipment

Tinted Glass	Trip Computer	360°camera	Airbag Status
Ambientlighting	Bluetooth telephone interface	Digital Radio	Enhanced speaker system
Front parking sensors	Highbeamassist	Remote adjusting wing mirrors	Satellite navigation
Stability control	Distancewarningsystem	Electrically folding wing mirrors	Laneassist
LED Headlamps	Rain sensitive windscreen wipers	Trafficsignrecognition	USB Socket
Adaptivecruisecontrol	Alloys wheels	Anti-lock braking	Cabin Pre Heating
Digitaldashboard	Fatiguewarningsystem	Heated wing mirrors	Massageseats
Remote central locking	Seatventilation	Sunroof	Electrically adjustable seats
Emergencybrakeassist	Leather steering wheel	Radio	Rear parking sensors

Equipment Details

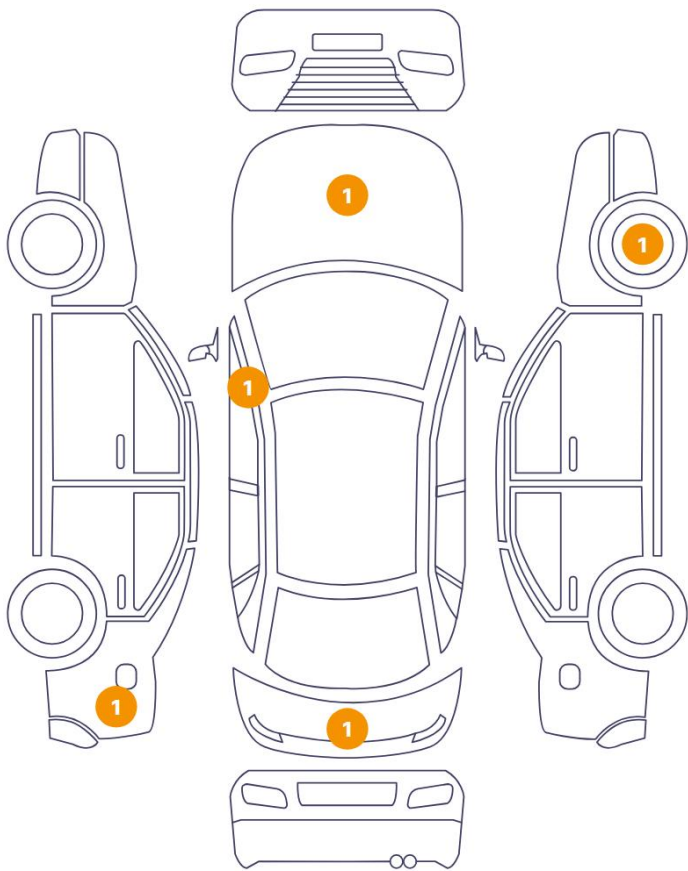
Air Conditioning	Three Zone Climate Control	Alloy Wheel Size	22
Enhanced Speaker System	Burmester	Seat Heating	Front
Sunroof Type	Tilt/Slide Glass		

Wheels & Tyres

Right Front Tyre Depth	6	Left Front Tyre Depth	6
Right Rear Tyre Depth	5	Left Rear Tyre Depth	5

Cosmetic Damage

5 Schäden



0 Schäden



Component		Damage	Comments
1	Hood	Paint / Stone Chip	
2	Rim / Front Right	Out of Bodywork / Scratch	
3	Wheel cover	Paint / Scratch / Scuff	
4	Side Panel / Back Left	Paint / Scratch / Scuff	
5	Deflector / Front Left	Paint / Stone Chip	



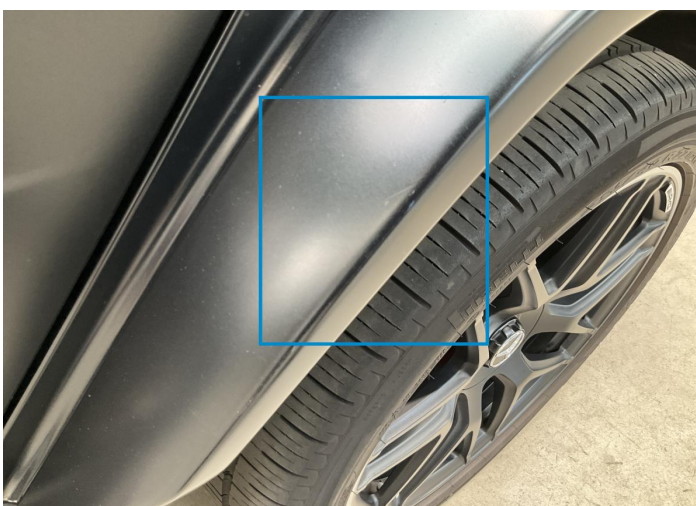
1. Hood
Paint / Stone Chip -



2. Rim / Front Right
Out of Bodywork / Scratch -



3. Wheel cover
Paint / Scratch / Scuff -



4. Side Panel / Back Left
Paint / Scratch / Scuff -



5. Deflector / Front Left
Paint / Stone Chip -

Mechanical Condition

Control Lights

Display Defect	✓	Service Light	✓
ABS Warning Light	✓	ESP Fault/Traction Control Malfunction Light	✓
Airbag Warning Light	✓	Oil Pressure Warning Light	✓
Brake Warning Light	✓	Power Steering Warning Light	✓
Alternator / Battery	✓	No Dashboard Lights	✓
Tire Pressure Monitoring System	✓		

Equipments Test

Other Equipments	✓	Central Locking	✓
Main & Spare Keys Functioning	✓	Electric Windows	✓
Navigation System	✓	Audio Equipment	✓
Parking Sensors / Cameras Functioning	✓	AC / Heating System	✓

Engine

Engine Starts	✓	Engine Status / EML	✓
Engine Leak Visible	✓		

Gearbox

Gear Box	✓
----------	---

Levels

Brakes Fluid	✓	Coolant Fluid	✓
--------------	---	---------------	---

Test Drive Inspection

Steering Wheel			
Steering Noise / Anomaly		✓	
Engine			
Engine Noise	✓	The Gears Scratch / Skip / Abnormal Operation	✓
Fume Quantity	✓	Power Loss	✓
Brake			
Brake System Anomaly		✓	
General			
Test Driven Status		✓	
✓ <i>No troubles detected, good condition or correct tests, according to vehicle age and mileage</i>			
! <i>Damages or malfunction detected that requires repairs by the buyer</i>			
NA <i>Not applicable</i>			
= <i>Not tested</i>			

Disclaimer

Please also note the "UserGuide condition report", which shows the scope of the vehicle description.

[User Guide](#)