



Expertise

Protocol number: 41480484
Order No. / Reference: 25201605
Inspection date: 10 Sept 2025

Manufacturer: Mercedes-Benz
VIN: W1N2539881G104223

Model: AMG GLC 63 4Matic+ AMG Speedshift MCT 9G



Vehicle details	
Manufacturer / Type / Model / Equipment	
Mercedes-Benz AMG GLC 63 4Matic+ AMG Speedshift MCT 9G	
Vehicle Identification number	W1N2539881G104223
Mileage (Read)	69,906 km
First registration	25 Aug 2022
Number of holders	1
Power / Engine displacement	350 kw / 3,982 ccm
Fuel type / Cylinder	Petrol / 8
Gearbox / Number of gears	Automatic / 9
Type of drive	All-wheel drive
Type of vehicle	SUV
Colour / colour code	Graphitgrau Metallic
Doors / Seats	5 / 5
Upholstery type	Cloth / leather combination
Colour of upholstery	Black



Vehicle details

Maintenance booklet / proof	digital proof / complete	Next maintenance in	167 Tag(e)
Last maintenance on / at	02/2025 at 57,088 km		
Key is / should be	2 / 2	FZG documents	ZB#2 (B) was available (copy), ZB#1 (S) was not available
		Letter No.	GJ476886
Previous damage / Accident	Detectable	Repainting	None detectable
Inspection conditions	sufficient	Lifting equipment / pit	yes
Test drive	Not performed	Engine function test	Performed
Manufacturer key number/ type code number	2222 / BJY 00030		
Emission standard	EURO6;WLTP;AP;PI/CI; M, N1 I	Fine dust sticker	
Permitted total weight	2,580 kg	Empty weight	

Tyres

Mounted tyres

#	Tyre size	Type of tyre	Manufacturer	Tread depth
1)	265/40 R21 105Y	Summer tyres on Light alloy	Pirelli	5mm / 5mm
2)	295/35 R21 107Y	Summer tyres on Light alloy	Pirelli	4mm / 4mm

Additional tyres

#	Tyre size	Type of tyre	Manufacturer	Tread depth
1)	235/55 R19 105V	Winter tyres on Light alloy	Dunlop	6mm / 6mm
2)	235/55 R19 105V	Winter tyres on Light alloy	Dunlop	6mm / 6mm

Legend: Tread depth information for tires on the left is in the first place, for tires on the right is in the second place on the axle in the direction of travel



Equipment

Standard equipment

- | | |
|---|---|
| <ul style="list-style-type: none"> • Airbag for driver and front passenger • Airbag: Sidebag for driver and front passenger • Active Brake Assist • AMG DYNAMIC SELECT (63) • AMG rear axle limited-slip differential electronic • AMG instrument cluster • AMG Performance steering wheel in nappa leather • AMG styling • ATTENTION ASSIST • Exterior mirrors left and right heated, electrically adjustable from the inside • Third brake light in LED technology • Electronic Stability Program (ESP) • Suspension: AMG RIDE CONTROL+ • Electric parking brake • Transmission: AMG SPEEDSHIFT MCT 9-speed sports transmission • Interior headliner fabric black • KEYLESS-GO start function • Climate: THERMATIC automatic climate control with 2 climate zones • 5-way headrests • Fuel tank with larger volume 66 l • Steering column mechanically adjustable in height and length • Gasoline particulate filter • Package: Chrome • Upholstery: ARTICO man-made leather/DINAMICA microfiber • Radio accessories: Media Display 10.25" • Tire pressure monitoring (TPMS) • Wheels: 48.3 cm (19") AMG light-alloy wheels in 10-spoke design • Seats: Folding rear seat backrests • Seats: Front seats electrically adjustable • Fully digital instrument display • Immobiliser • Central locking | <ul style="list-style-type: none"> • Airbag: Kneebag for driver • Airbag: Windowbags • AMG spoiler lip in body color • AMG door sills in brushed stainless steel at the front • AMG high-performance braking system • AMG Performance 4MATIC+ • AMG-specific radiator grille • Anti-lock braking system (ABS) • Automatic passenger airbag deactivation • On-board computer • Roof rails in polished aluminum • EASY-Pack load compartment cover (removable) • Driving light assistant • 4-way electric window lifter • Floor mats in black with AMG lettering • Rear window heated • Rear window wiper • Instrument panel and door edges in ARTICO man-made leather • Remote trunk lid release • Communication module (LTE) for the use of Mercedes me connect services • LED high-performance headlights • Mercedes-Benz emergency call system • Navigation accessories: Advanced functions MBUX • Package: Storage • Package: Interior light • Radio: MBUX multimedia system • Radio accessories: Digital radio • Radio accessories: Touchpad • Remote Services Plus • Windscreen wipers with rain sensor • Power steering • Seats: I-Size child restraint system on the outer rear seats • Cruise control • High-visibility vest for drivers • Heat and sound insulating acoustic glass • Decorative elements: piano lacquer look black/aluminium with light longitudinal grain |
|---|---|

Extra equipment

- | | |
|--|---|
| <ul style="list-style-type: none"> • Advanced Sound System 853 • Ambient lighting (Design the interior according to your personal preferences or current mood. With a total of 64 colors, the ambient lighting offers almost unlimited lighting possibilities and has the right color for every situation. Illuminated door sills on the driver and passenger sides.) • AMG spoiler lip in high-gloss black | <ul style="list-style-type: none"> • Active Distance Assist DISTRONIC (You won't want to be without this sophisticated system, especially in congested traffic or traffic jams. Active Distance Assist DISTRONIC takes the strain off you and automatically regulates the distance to the vehicle ahead. In conjunction with Traffic Sign Recognition, you can conveniently adopt detected speed limits at the touch of a button.) • AMG Driver's Package (includes top speed limitation to 270 km/h) |
|--|---|



- AMG aerodynamics package (additional, large front spoiler - enlarged rear diffuser with diffuser attachment)
- AMG steering wheel buttons
- AMG Performance steering wheel in nappa leather/DINAMICA microfiber (sporty 3-spoke design, flattened at the bottom, combined design in nappa leather and DINAMICA microfiber in the grip area, with 12 o'clock marker and decorative stitching, steering wheel spokes and steering wheel trim in silver chrome with AMG lettering, silver-colored aluminum shift paddles: allow manual gear changes and support sporty driving, touch control buttons)
- EASY-Pack tailgate with electric operation for opening and closing
- Paint finish: metallic
- Navigation accessories: Live Traffic Information pre-installation (With Live Traffic Information, your navigation system receives real-time traffic data and optimizes dynamic route guidance. Accurate and up-to-date information on traffic jams, stop-and-go traffic, and more helps you reduce travel times.)
- Package: Advanced Light (LED High Performance headlights and adaptive rear lights in LED technology Adaptive High Beam Assistant)
- Package: High End Park (Parking package with 360° camera Active Parking Assistant with PARKTRONIC)
- Package: Mirrors (Electrically folding exterior mirrors, lowerable right exterior mirrors with automatic dimming function)
- Panoramic sunroof
- Radio accessories: MBUX Interior Assistant (This innovative system detects and interprets your hand and arm movements. Selected functions can be activated in a flash. The system can distinguish between driver and passenger, allowing you to access the exact menus you want to operate.)
- Heated windscreen washer system
- Decorative elements: Black open-pore ash wood / light longitudinally ground aluminum
- AMG Night Package (Exterior elements in high-gloss black: A-wing including integrated trim strip on the AMG front apron; painted exterior mirror housings; inserts in the AMG side sill panels; beltline trim strip and window surrounds; trim strip in the rear bumper exclusively for the S-model: trim strip in the diffuser panel; heat-insulating dark-tinted glass from the B-pillar onward; AMG exhaust system with two black chrome-plated twin tailpipe trims; roof rails in black)
- Head-up display
- KEYLESS-GO (Your KEYLESS-GO vehicle key can stay in your pocket; you don't have to pick it up. Thanks to the stored access and driving authorization, the vehicle recognizes its owner. Grasp the door handle, open it, get in, and drive off—KEYLESS-GO is a convenient experience every time.)
- Package: Advanced Comfort (Seat heating for driver and front passenger, driver's seat electrically adjustable with memory function, front seat right electrically adjustable with memory function)
- Package: Business (Advanced Parking Package: Active Parking Assistant PARKTRONIC with rearview camera; Advanced Infotainment Package: Media display with touch operation, smartphone integration - Apple CarPlay and Android Auto; Connectivity Package Navigation; Traffic Sign Assistant; Comfort Package: Seat heating for driver and front passenger; Seat Comfort Package - electric and manual adjustment options for the front seats; Fuel tank with larger capacity)
- Wheels: 53.3 cm (21") AMG forged wheels in cross-spoke design (painted matt black with high-sheen rim flange, front axle 265/40 R 21 on 9.5 J x 21 ET 30, rear axle 295/35 R 21 on 10 J x 21 ET 28)
- Partition net for luggage compartment separation (and occupant protection)

Brief expert findings

Documents submitted	At the time of the inspection, the registration certificate Part 2 (letter) was available, but the registration certificate Part 1 (certificate) was not. (Copy)
VIN comparison	The vehicle identification number (VIN) was read from the vehicle and its conformity with the submitted documents was verified during the inspection by the undersigned.
Inspection	The inspection conditions were sufficient for the assessment of the vehicle. Lifting equipment and a pit were available for examining the vehicle.
Test drive	No test drive/maneuvering was carried out during the inspection of the vehicle.
Engine function test	An engine test run was performed.

Value reducing factors

No.	Component group	Description
1	Boot lid / rear door	Boot lid - dent(s) - Smooth repair work
2	Roof	Roof rail - right side - Stone chips - Smart repair
3	Door - rear left side	Door - Scratch(es) - Smart repair



No.	Component group	Description
4	Rear bumper	Rear bumper - Scratched - Paint
5	Door - front left side	Door - Scratched - Paint
6	Bonnet	Bonnet - Stone chips - Paint
7	Wheel / tyres	Alloy rim - front left side (Materialabtrag) - Damaged - Replace

Accident damages

No. Accident

- 1 Side right
- 2 Front, Side right

Order/Scope of order

The order was placed to prepare a sales report for the vehicle described. This includes the following:

- Description of core relevant information about the vehicle
- Documentation of equipment features
(*Delivery by third-party service providers*)
- Documentation of damage, defects, missing parts
- Documentation of previous damage, unrepaired previous damage, repainting
- a brief visual or functional inspection of the equipment details if possible.
(*Functional tests of driver assistance systems are not included in the scope of services!*)
- a photo documentation of the vehicle

Basis for the order

This product is based on the Alphabet Fuhrpark GmbH guidelines for vehicle returns and valuations. The expert makes the explicit findings in each individual case objectively within the framework of the specified standards based on his or her own expertise.

The vehicle inspection takes place in a disassembled state.

Damage or defects that can only be detected during disassembly/diagnosis work or through advanced knowledge remain within the scope of the prognosis risk. An extended risk exists for concealed defects caused by fraudulent deception and not identifiable by the expert.

Damage or defects resulting from normal use or wear and tear of the vehicle will be accepted according to the applicable standard.

There was no explicit identification or monetary consideration of the expected features within the product.

Features which in their nature and severity slightly exceed normal use but do not constitute unacceptable damage will be documented and identified under signs of use if necessary.

Damage or defects which, according to the underlying standard, can no longer be attributed to normal use or wear and tear are listed in the product under "Depreciating Factors".

Depending on the product specification, a monetary ID can be provided. If this takes place, the costs can be 100% d or pro rata depending on the vehicle's age and mileage.

Previous damages

Non-repaired previous damages were found at the vehicle. The necessary repair costs are listed in the expert report or if necessary, are listed in detail in a separately enclosed repair cost calculation.

Comments

- Der 2.Radsatz gehört nicht zur Ausstattung und wurde nicht in der Bewertung berücksichtigt.



Figure 1: Diagonal front (left)



Figure 2: Diagonal front (right)



Figure 3: Diagonal rear (left)



Figure 4: Diagonal rear (right)



Figure 5: Interior - front



Figure 6: Interior - rear



Figure 7: Instrument cluster



Figure 8: Instrument panel



Figure 9: Interior 360° view ([Online link](#))

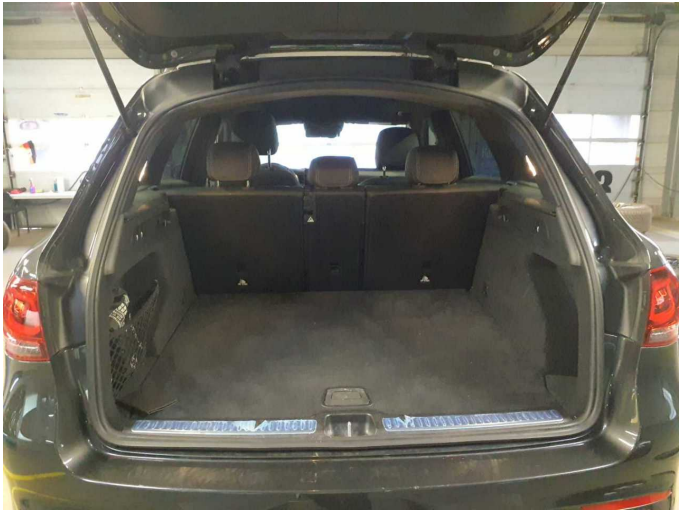


Figure 10: Cargo area

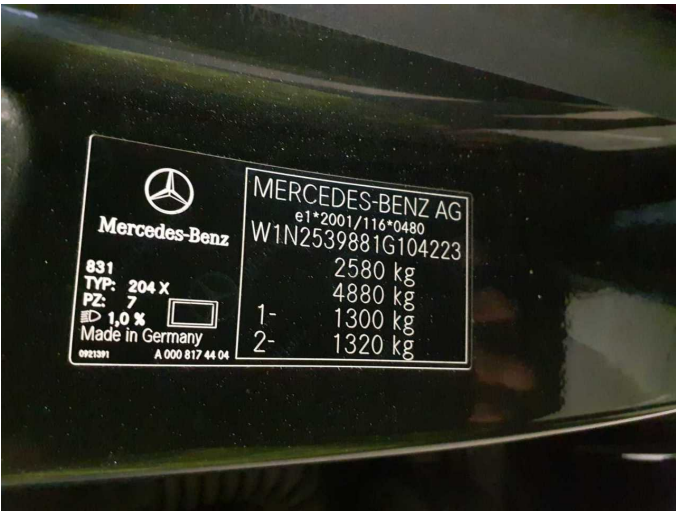


Figure 11: VIN



Figure 12: Mounted tyres



Figure 13: Documents



Figure 14: Documents



Figure 15: Documents



Figure 16: Additional tyres



Figure 17: Additional tyres



Figure 18: Navigation

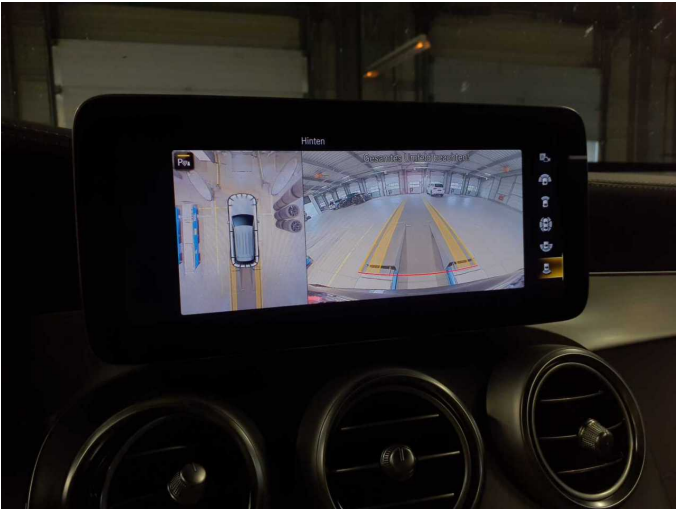


Figure 19: Misc.



Figure 20: Misc.



Figure 21: Misc.



Figure 22: Misc.



Figure 23: Misc.



Figure 24: Misc.



Figure 25: Misc.



Figure 26: Misc.



Figure 27: Misc.



Figure 28: Misc.



Figure 29: Misc.



Figure 30: Misc.



Figure 31: Misc.



Figure 32: Misc.

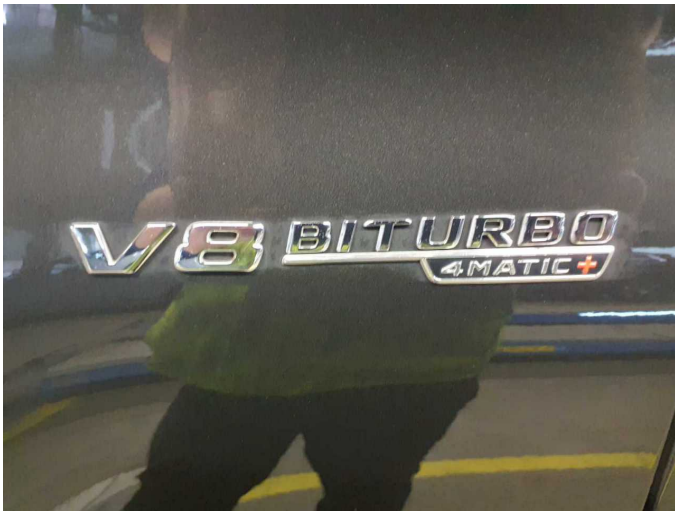


Figure 33: Misc.



Figure 34: Misc.

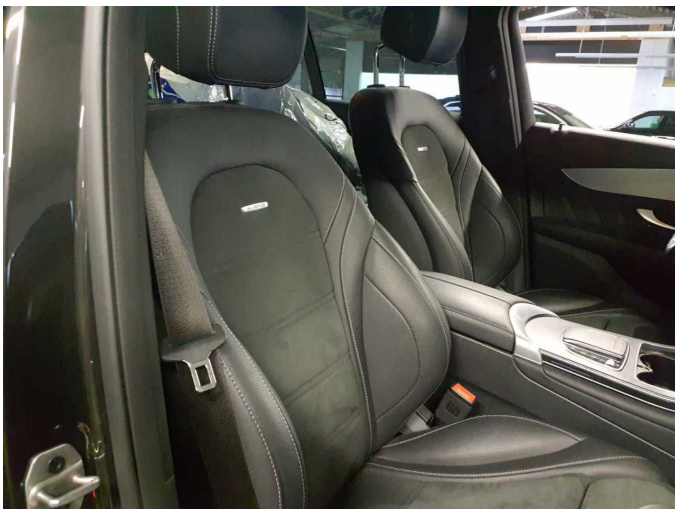


Figure 35: Misc.



Figure 36: Misc.



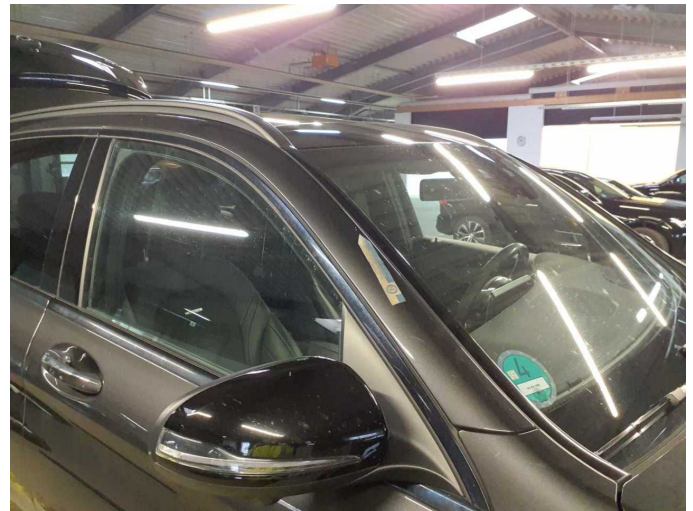
Figure 37: Misc.



Damage 1: Boot lid / rear door: Boot lid - dent(s) - Smooth repair work



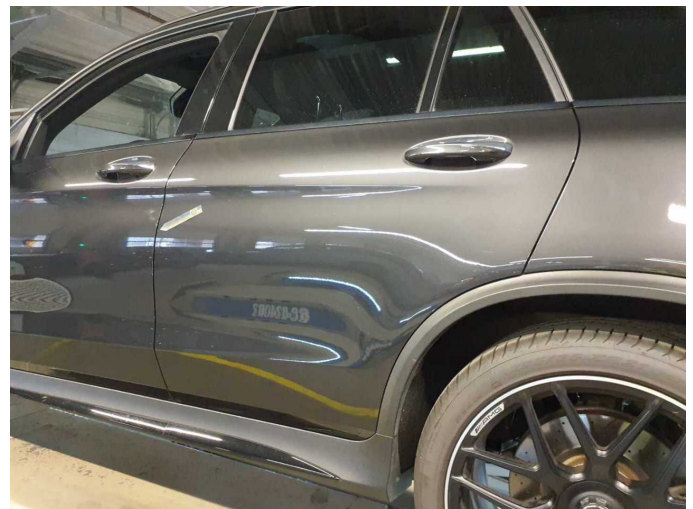
Damage 1: Boot lid / rear door: Boot lid - dent(s) - Smooth repair work



Damage 2: Roof: Roof rail - right side - Stone chips - Smart repair



Damage 2: Roof: Roof rail - right side - Stone chips - Smart repair



Damage 3: Door - rear left side: Door - Scratch(es) - Smart repair



Damage 3: Door - rear left side: Door - Scratch(es) - Smart repair



Damage 4: Rear bumper: Rear bumper - Scratched - Paint



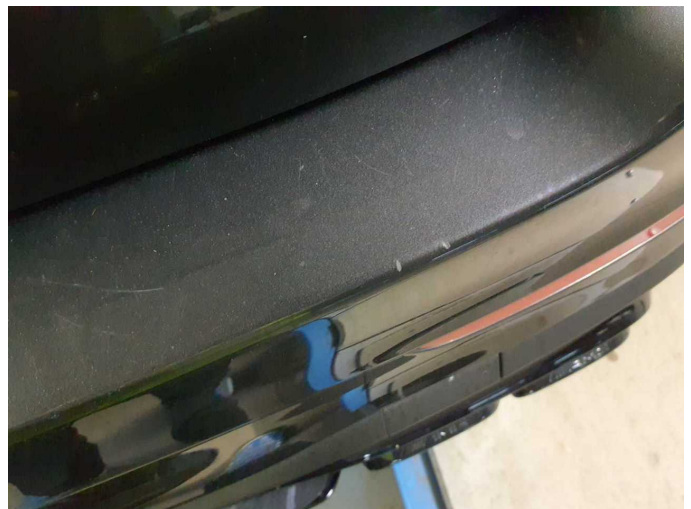
Damage 4: Rear bumper: Rear bumper - Scratched - Paint



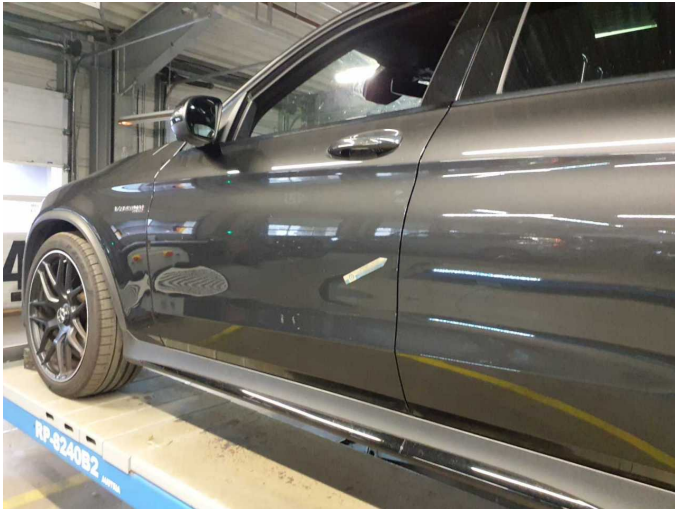
Damage 4: Rear bumper: Rear bumper - Scratched - Paint



Damage 4: Rear bumper: Rear bumper - Scratched - Paint



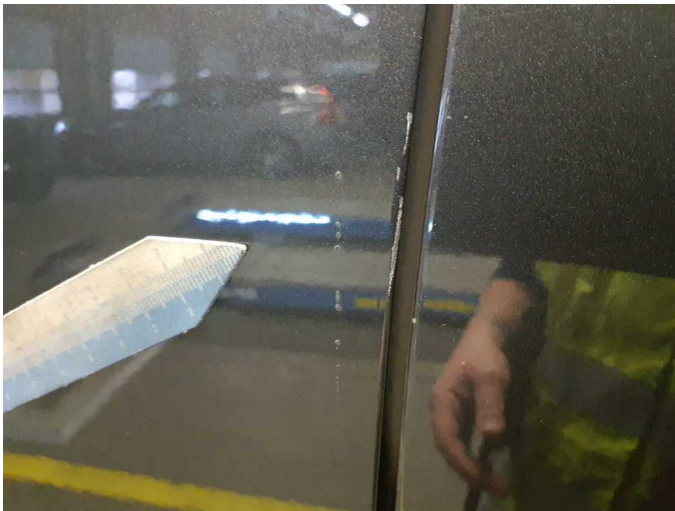
Damage 4: Rear bumper: Rear bumper - Scratched - Paint



Damage 5: Door - front left side: Door - Scratched - Paint



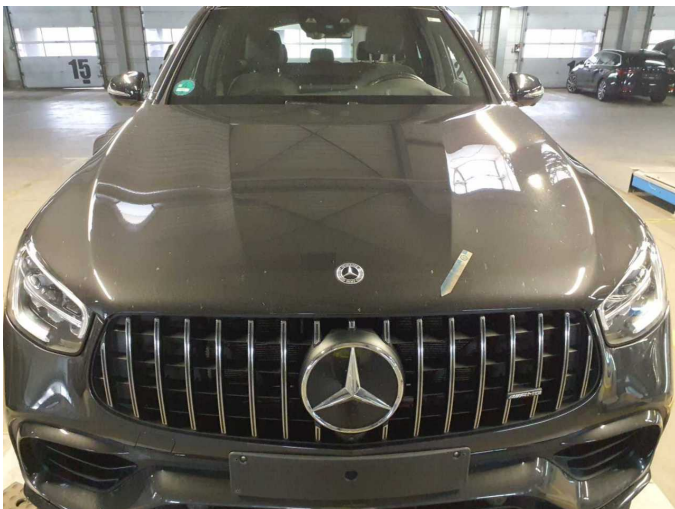
Damage 5: Door - front left side: Door - Scratched - Paint



Damage 5: Door - front left side: Door - Scratched - Paint



Damage 5: Door - front left side: Door - Scratched - Paint



Damage 6: Bonnet: Bonnet - Stone chips - Paint



Damage 6: Bonnet: Bonnet - Stone chips - Paint



Damage 7: Wheel / tyres: Alloy rim - front left side (Materialabtrag) - Damaged - Replace



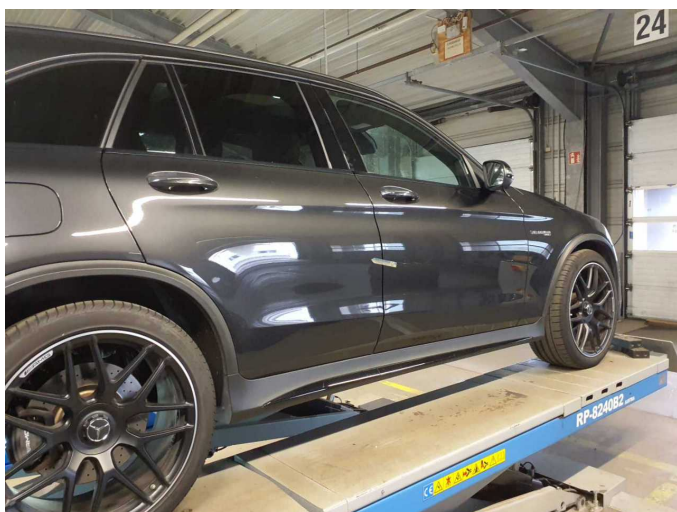
Damage 7: Wheel / tyres: Alloy rim - front left side (Materialabtrag) - Damaged - Replace



Damage 7: Wheel / tyres: Alloy rim - front left side (Materialabtrag) - Damaged - Replace



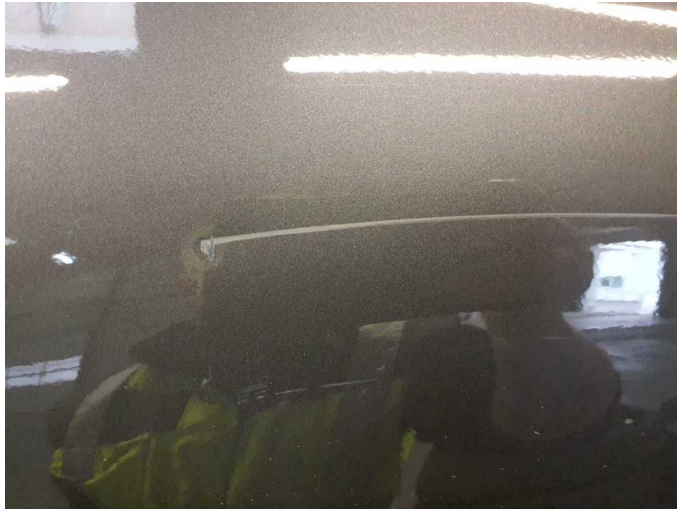
Damage 7: Wheel / tyres: Alloy rim - front left side (Materialabtrag) - Damaged - Replace



Accident 1: Side right



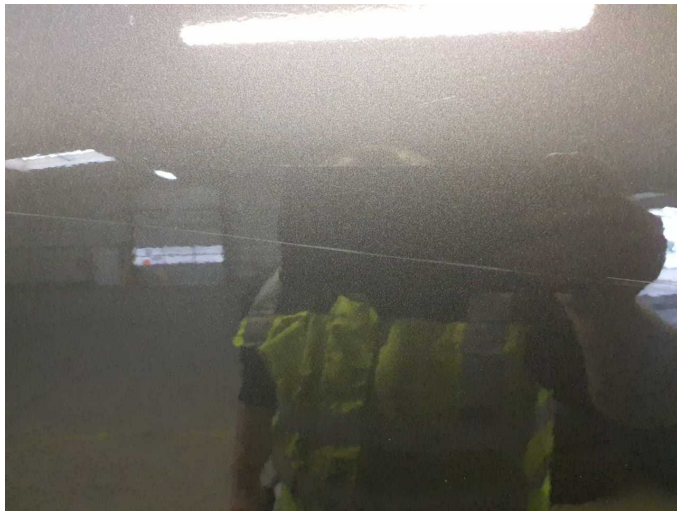
Accident 1: Side right



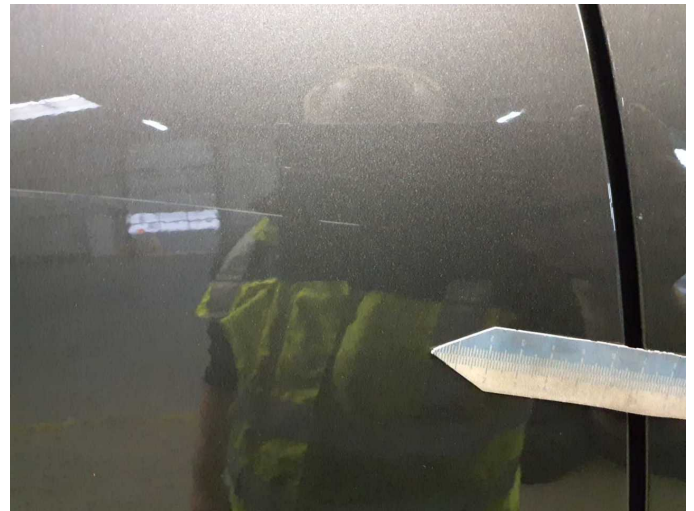
Accident 1: Side right



Accident 1: Side right



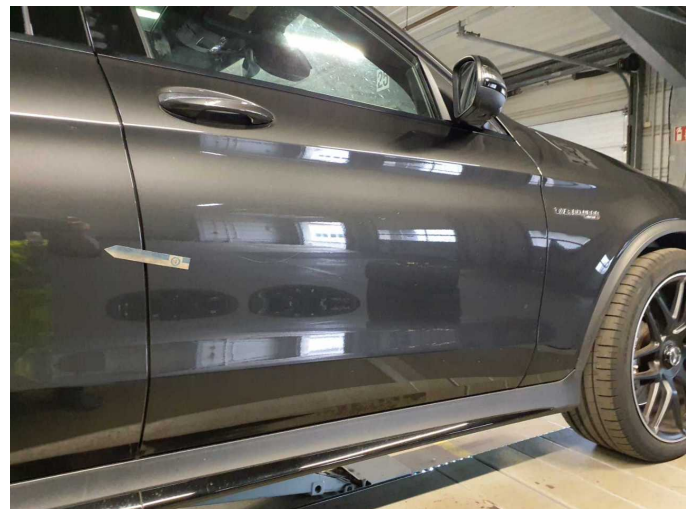
Accident 1: Side right



Accident 1: Side right



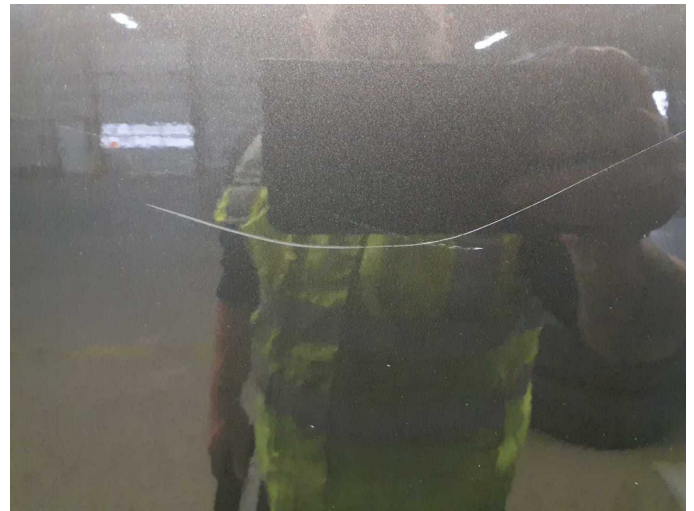
Accident 1: Side right



Accident 1: Side right



Accident 1: Side right



Accident 1: Side right



Accident 1: Side right



Accident 1: Side right



Accident 2: Front, Side right



Accident 2: Front, Side right



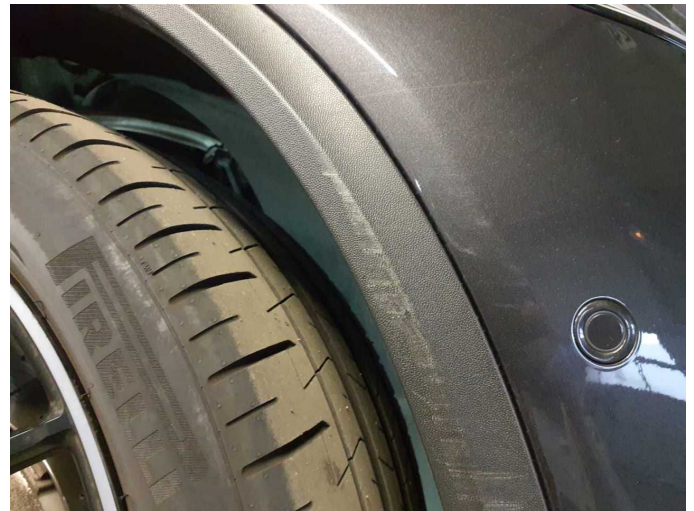
Accident 2: Front, Side right



Accident 2: Front, Side right



Accident 2: Front, Side right



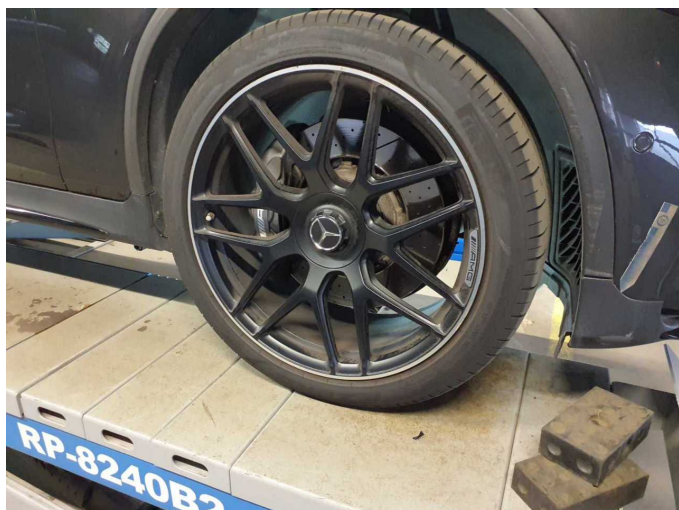
Accident 2: Front, Side right



Accident 2: Front, Side right



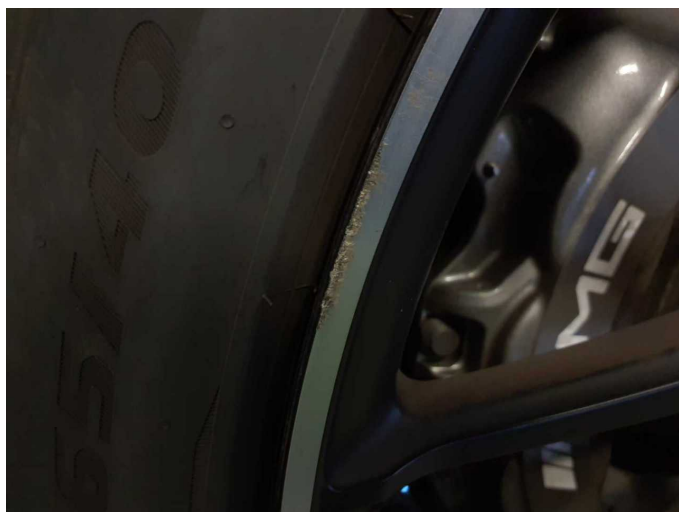
Accident 2: Front, Side right



Accident 2: Front, Side right



Accident 2: Front, Side right



Accident 2: Front, Side right



Wartungshistorie

(gemäß Auftraggeber Informationen)

Fahrgestellnummer: W1N2539881G104223

Hersteller / Modell: MERCEDES-BENZ MB AMG GLC 63 4Matic+ AMG Speedshift
MCT 9G

Datum	KM-Stand	Beschreibung
29.07.2025	66.901	Kraftstoffpumpe ern; Systemtest/Eigendiagnose; Wartung Sonstiges
24.02.2025	57.088	Regelwartungsdienst
06.03.2024	41.054	Regelwartungsdienst
04.07.2023	21.740	Regelwartungsdienst