



Expertise

Protocol number: 41377522
Order No. / Reference: 25154960
Inspection date: 4 Sept 2025

Manufacturer: Mercedes-Benz
VIN: W1N2539811V281536

Model: GLC 200 4Matic 9G-TRONIC



Vehicle details	
Manufacturer / Type / Model / Equipment	
Mercedes-Benz GLC 200 4Matic 9G-TRONIC	
Vehicle Identification number	W1N2539811V281536
Mileage (Read)	149,492 km
First registration	18 Jan 2021
Number of holders	1
Power / Engine displacement	145 kw / 1,991 ccm
Fuel type / Cylinder	Hybrid Petrol / E / 4
Gearbox / Number of gears	Automatic / 9
Type of drive	All-wheel drive
Type of vehicle	SUV
Colour / colour code	SCHWARZ - UNILACK
Doors / Seats	5 / 5
Upholstery type	Cloth
Colour of upholstery	Black



Vehicle details

Maintenance booklet / proof	Non-existent	Next maintenance in	174 Tag(e)
Key is / should be	2 / 2	FZG documents	ZB#2 (B) was available (copy), ZB#1 (S) was not available
		Letter No.	FX739829
Previous damage / Accident	Detectable	Repainting	Detectable
Inspection conditions	sufficient	Lifting equipment / pit	yes
Test drive	Not performed	Engine function test	Performed
Manufacturer key number/ type code number	2222 / AKM 00132		
Emission standard	EURO6;WLTP;AP;PI/CI; M, N1 I	Fine dust sticker	
Permitted total weight	2,400 kg	Empty weight	

Tyres

Mounted tyres

#	Tyre size	Type of tyre	Manufacturer	Tread depth
1)	235/60 R18 107V	Winter tyres on Light alloy	Fulda	6mm / 6mm
2)	235/60 R18 103V	Summer tyres on Light alloy	Bridgestone	6 mm
	235/60 R18 103V	All-season tires (with runflat) on Light alloy	Bridgestone	6 mm

Additional tyres

#	Tyre size	Type of tyre	Manufacturer	Tread depth
1)	235/60 R18 107H	Winter tyres on Light alloy	Goodyear	6mm / 6mm
2)	235/60 R18 107H	Winter tyres on Light alloy	Goodyear	5mm / 5mm

Replacement

Typ	Tyre size	Type of tyre	Manufacturer	Tread depth
	Tirefit	Expiration date 01/2026		

Legend: Tread depth information for tires on the left is in the first place, for tires on the right is in the second place on the axle in the direction of travel

Equipment

Standard equipment

- | | |
|---|---|
| <ul style="list-style-type: none"> • Airbag for driver and front passenger • Airbag: Sidebag for driver and front passenger • Active Brake Assist • Anti-lock braking system (ABS) • Automatic passenger airbag deactivation • On-board computer • Roof rails in polished aluminum • Third brake light in LED technology • EASY-Pack load compartment cover (removable) • Driving light assistant • 4-way electric window lifter • Velour floor mats in interior color • Rear window heated • Interior headliner fabric crystal grey • Climate: THERMATIC automatic climate control with 2 climate zones • Communication module (LTE) for the use of Mercedes me connect services • Paint finish: Uni • Steering wheel: Multifunction sports steering wheel in 3-spoke design in black leather • Mercedes-Benz emergency call system • Gasoline particulate filter • Package: Chrome • Upholstery: Aberdeen black fabric • Radio accessories: Digital radio • Tire pressure monitoring (TPMS) • Wheels: 43.2 cm (17") light alloy wheels, 4-spoke design • Power steering • Seats: I-Size child restraint system on the outer rear seats • Cruise control • Immobiliser • Decorative elements: piano lacquer look black | <ul style="list-style-type: none"> • Airbag: Kneebag for driver • Airbag: Windowbags • 4MATIC all-wheel drive • ATTENTION ASSIST • Exterior mirrors left and right heated, electrically adjustable from the inside • tachometer • DYNAMIC SELECT • Electronic Stability Program (ESP) • Chassis: AGILITY CONTROL chassis • Electric parking brake • Transmission: 9G-TRONIC • Rear window wiper • KEYLESS-GO start function • Remote trunk lid release • Instrument cluster with 2 tube-shaped round instruments, 13.97 cm (5.5") multifunction display • 5-way headrests • LED high-performance headlights • Steering column mechanically adjustable in height and length • Navigation accessories: Advanced functions MBUX • Package: Storage • Package: Interior light • Radio: MBUX multimedia system • Radio accessories: Touchpad • Remote Services Plus • Windscreen wipers with rain sensor • Seats: Folding rear seat backrests • Seats: Front seats electrically adjustable • High-visibility vest for drivers • Central locking |
|---|---|

Extra equipment

- | | |
|---|--|
| <ul style="list-style-type: none"> • EASY-Pack tailgate with electric operation for opening and closing • Paintwork: Special paintwork Uni • Navigation accessories: Live Traffic Information pre-installation (With Live Traffic Information, your navigation system receives real-time traffic data and optimizes dynamic route guidance. Accurate and up-to-date information on traffic jams, stop-and-go traffic, and more helps you reduce travel times.) | <ul style="list-style-type: none"> • Chassis: AGILITY CONTROL chassis in conjunction with AMG Line Exterior or OFF-ROAD Exterior (with selective damping system) • Package: Advanced Light (LED High Performance headlights and adaptive rear lights in LED technology Adaptive High Beam Assistant) • Package: Advanced Park (Parking package with rear view camera Active Parking Assist with PARKTRONIC) |
|---|--|



- Package: High-End Infotainment (Media display with touchscreen operation, Smartphone integration: Apple CarPlay and Android Auto, Navigation connectivity package, Traffic Sign Assistant: thanks to the intelligent linking of camera and map data, it can detect not only speed limits, overtaking bans and their cancellation, but also MBUX Augmented Reality for navigation, fully digital instrument display, and wireless charging system for mobile devices in the dashboard compartment)
- Package: Mirrors (Electrically folding exterior mirrors, lowerable right exterior mirrors with automatic dimming function)
- Wheels: 45.7 cm (18") light alloy wheels, 4-spoke design (vanadium silver painted with 235/60 R18 and 8 J x 18 ET 38)
- Telephone: Multifunction telephony in conjunction with high-end infotainment package (wireless mobile phone connection with external antenna - wireless charging for compatible mobile phones - Bluetooth and Wi-Fi pairing via NFC (Near Field Communication) technology)
- Elimination of type marking on the trunk lid
- Package: Business (Advanced Parking Package: Active Parking Assistant PARKTRONIC with rearview camera; Advanced Infotainment Package: Media display with touch operation, smartphone integration - Apple CarPlay and Android Auto; Connectivity Package Navigation; Traffic Sign Assistant; Comfort Package: Seat heating for driver and front passenger; Seat Comfort Package - electric and manual adjustment options for the front seats; Fuel tank with larger capacity)
- Package: Comfort (Seat heating for driver and front passenger, electric and manual adjustment options for driver and front passenger seats, electro-pneumatic 4-way lumbar support and lateral support adjustment with control element on the seat, electric seat cushion tilt adjustment, electric height adjustment, electric backrest adjustment, mechanical seat cushion depth adjustment by 6 cm with leg rest pad, mechanical length adjustment, mechanical headrest adjustment)
- TIREFIT with tire inflation compressor
- Partition net for luggage compartment separation (and occupant protection)
- Heat-insulating dark tinted glass all around from B-pillar

Brief expert findings

Documents submitted	At the time of the inspection, the registration certificate Part 2 (letter) was available, but the registration certificate Part 1 (certificate) was not. (Copy)
VIN comparison	The vehicle identification number (VIN) was read from the vehicle and its conformity with the submitted documents was verified during the inspection by the undersigned.
Inspection	The inspection conditions were sufficient for the assessment of the vehicle. Lifting equipment and a pit were available for examining the vehicle.
Test drive	No test drive/maneuvering was carried out during the inspection of the vehicle.
Engine function test	An engine test run was performed.

Value reducing factors

No.	Component group	Description
1	Misc.	Inspection / maintenance - No evidence - No deduction
2	Misc.	Inspection / maintenance (Historie fehlt) - No evidence - No deduction
3	Misc.	Main inspection - No evidence - No deduction
4	Door - front left side	Door edge - Scratch(es) - Smart repair
5	Boot lid / rear door	Boot lid - dent(s) - Smooth repair work
6	Mudguard - right side	Mudguard - right side - Scratch(es) - Smart repair
7	Door - rear right side	Door - Scratch(es) - Smart repair
8	Side panel - rear right side	Side panel - Scratch(es) - Smart repair
9	Rear bumper	Rear bumper - Scratched - Paint
10	Side panel - rear left side	Side panel - Scratched - Paint

Missing parts

Description

Documents - Service book (digitaler Nachweis)



Previous damages

No.	Previous damage	Extent of damage (Net)
1	Rear, Provided by user / customer, from 29 Mar 2022	1.493,27 €
2	Side right, Provided by user / customer, from 1 Apr 2022	1.761,40 €
3	Front, Side - left, Provided by user / customer, from 15 Aug 2023	2.311,41 €
4	Front, Provided by user / customer, from 16 May 2024	2.765,66 €
5	Side - left, Provided by user / customer, from 10 Jul 2021	8.112,06 €
6	Front, Side - left, Side right, Provided by user / customer, from 17 Nov 2023	12.746,65 €

Repainting

No. Repainting

- 1 Mudguard - right side, Professionally carried out, Invoice of repair done Non-existent
- 2 Bonnet, Professionally carried out, Invoice of repair done Non-existent
- 3 Side panel - rear left side, Professionally carried out, Invoice of repair done Non-existent
- 4 Door - front left side, Professionally carried out, Invoice of repair done Non-existent

Paint coat thickness measurement

Mudguard - right side	188 µm	Bonnet	265 µm
Side panel - rear left side	166 µm	Door - front left side	172 µm

Order/Scope of order

The order was placed to prepare a sales report for the vehicle described. This includes the following:

- Description of core relevant information about the vehicle
- Documentation of equipment features
(*Delivery by third-party service providers*)
- Documentation of damage, defects, missing parts
- Documentation of previous damage, unrepaired previous damage, repainting
- a brief visual or functional inspection of the equipment details if possible.
(*Functional tests of driver assistance systems are not included in the scope of services!*)
- a photo documentation of the vehicle



Basis for the order

This product is based on the Alphabet Fuhrpark GmbH guidelines for vehicle returns and valuations. The expert makes the explicit findings in each individual case objectively within the framework of the specified standards based on his or her own expertise.

The vehicle inspection takes place in a disassembled state.

Damage or defects that can only be detected during disassembly/diagnosis work or through advanced knowledge remain within the scope of the prognosis risk. An extended risk exists for concealed defects caused by fraudulent deception and not identifiable by the expert.

Damage or defects resulting from normal use or wear and tear of the vehicle will be accepted according to the applicable standard.

There was no explicit identification or monetary consideration of the expected features within the product.

Features which in their nature and severity slightly exceed normal use but do not constitute unacceptable damage will be documented and identified under signs of use if necessary.

Damage or defects which, according to the underlying standard, can no longer be attributed to normal use or wear and tear are listed in the product under "Depreciating Factors".

Depending on the product specification, a monetary ID can be provided. If this takes place, the costs can be 100% d or pro rata depending on the vehicle's age and mileage.

Previous damages

According to available information previous damages were repaired at the vehicle. Traces of repairs, which allow conclusions about the area of repair, were not recognizable during the inspection.

Comments

Auf der Hinterachse sind unterschiedliche Reifen drauf. Muss eventuell noch nachberechnet werden.



Figure 1: Diagonal front (left)



Figure 2: Diagonal front (right)



Figure 3: Diagonal rear (left)



Figure 4: Diagonal rear (right)



Figure 5: Interior - front



Figure 6: Interior - rear



Figure 7: Instrument cluster



Figure 8: Instrument panel



Figure 9: interior 360° view ([Online link](#))



Figure 10: Cargo area



Figure 11: VIN



Figure 12: Mounted tyres



Figure 13: Documents



Figure 14: Additional tyres



Figure 15: Navigation



Figure 16: Misc.



Figure 17: Misc.



Figure 18: Misc.



Figure 19: Misc.



Figure 20: Misc.

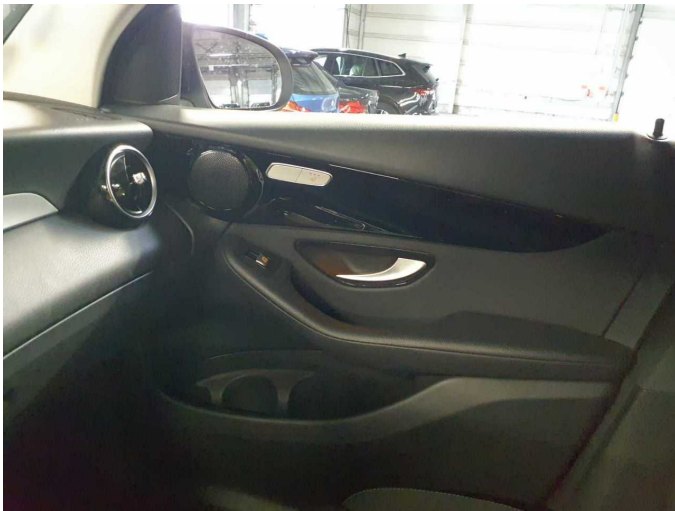


Figure 21: Misc.



Figure 22: Misc.



Figure 23: Misc.

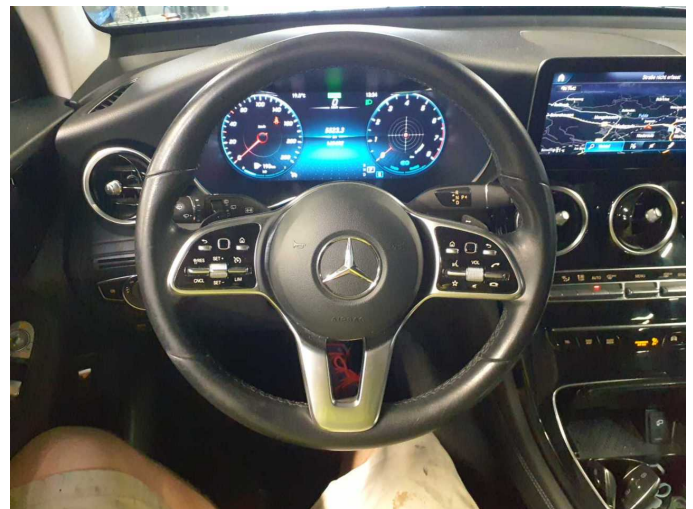


Figure 24: Misc.

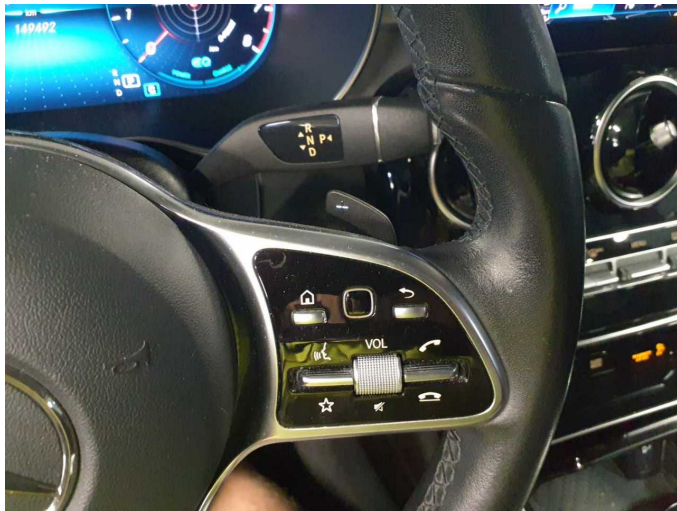


Figure 25: Misc.

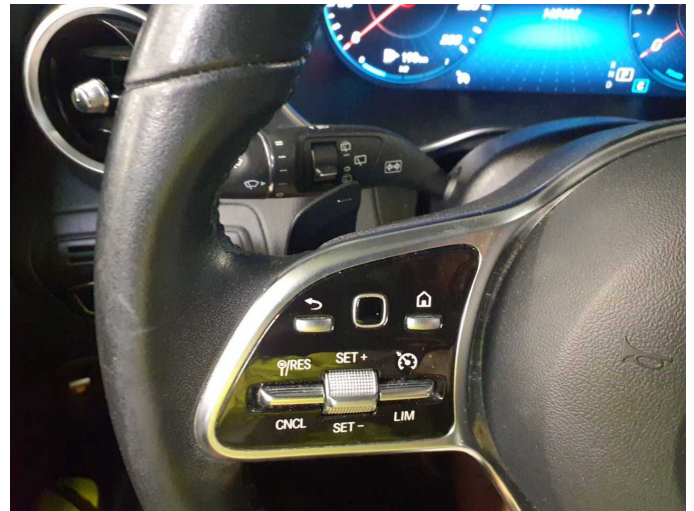


Figure 26: Misc.



Figure 27: Misc.



Figure 28: Misc.



Figure 29: Misc.



Figure 30: Misc.



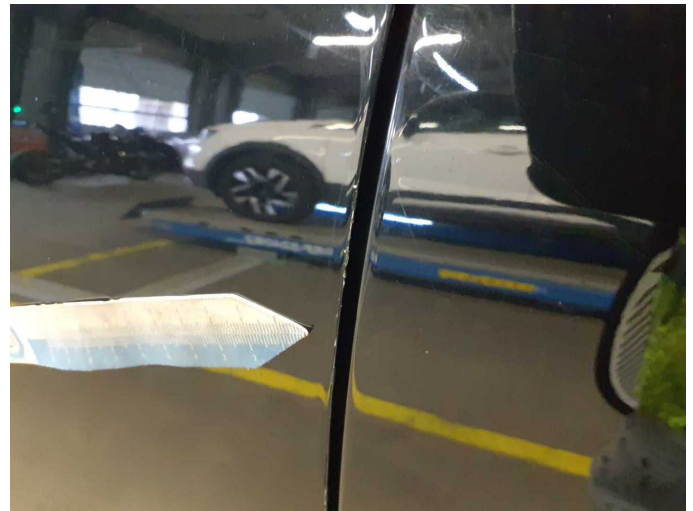
Figure 31: Misc.



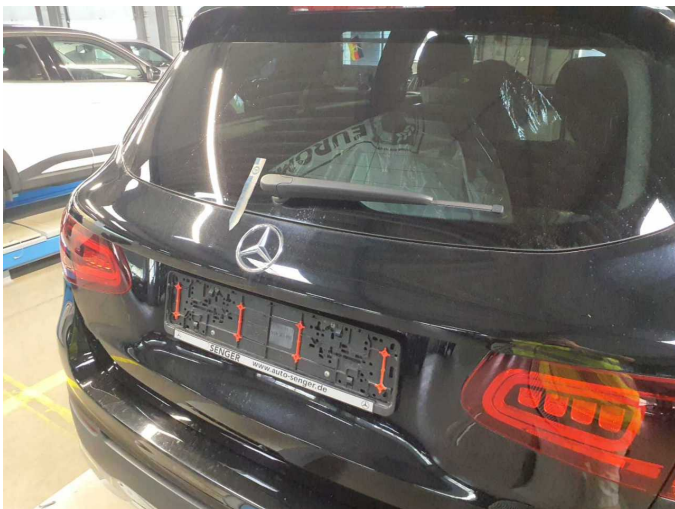
Figure 32: Misc.



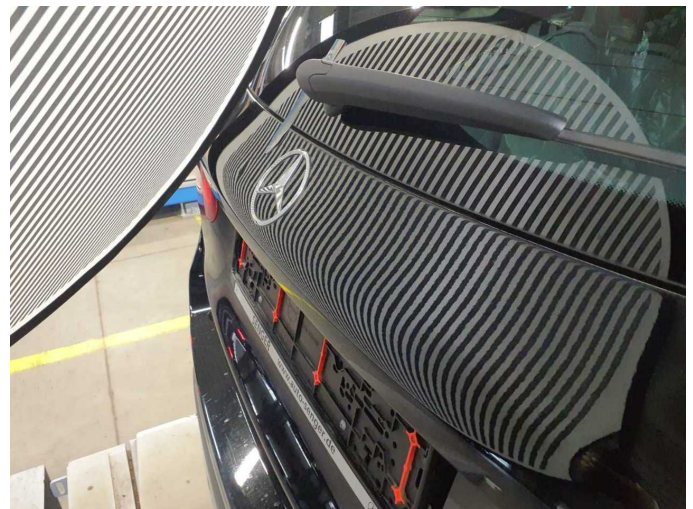
Damage 4: Door - front left side: Door edge - Scratch(es) - Smart repair



Damage 4: Door - front left side: Door edge - Scratch(es) - Smart repair



Damage 5: Boot lid / rear door: Boot lid - dent(s) - Smooth repair work



Damage 5: Boot lid / rear door: Boot lid - dent(s) - Smooth repair work



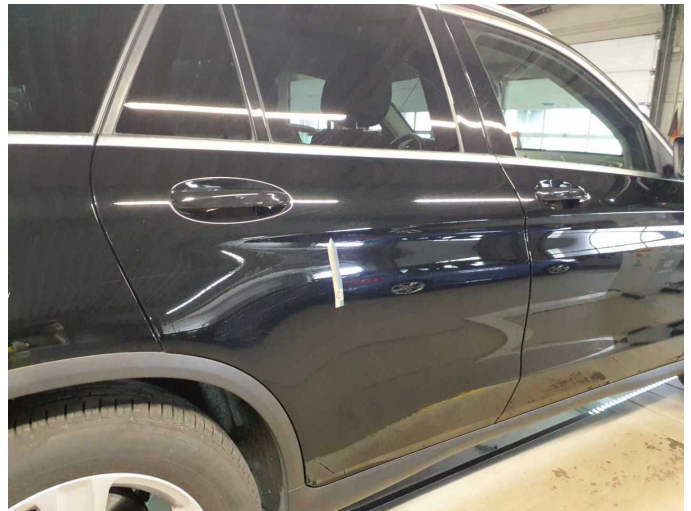
Damage 5: Boot lid / rear door: Boot lid - dent(s) - Smooth repair work



Damage 6: Mudguard - right side: Mudguard - right side - Scratch(es) - Smart repair



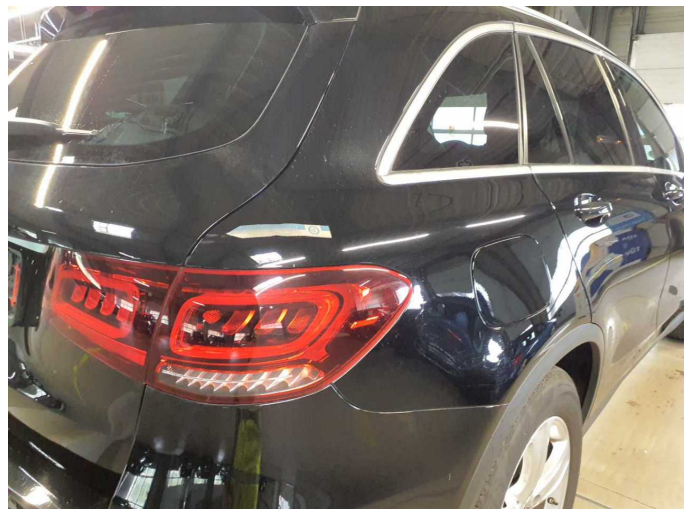
Damage 6: Mudguard - right side: Mudguard - right side - Scratch(es) - Smart repair



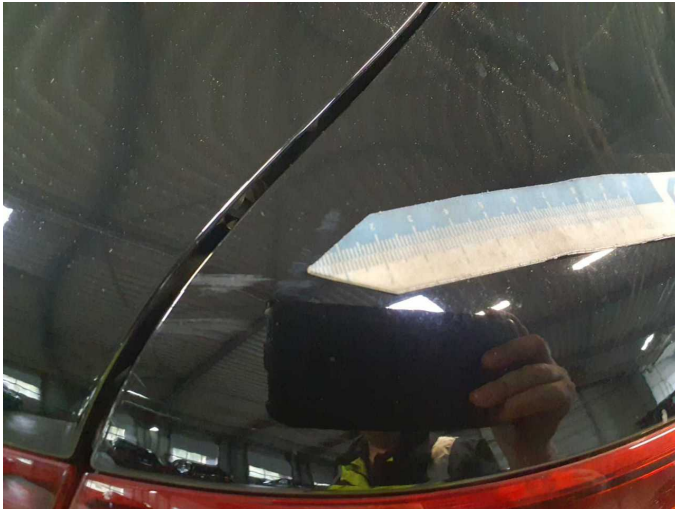
Damage 7: Door - rear right side: Door - Scratch(es) - Smart repair



Damage 7: Door - rear right side: Door - Scratch(es) - Smart repair



Damage 8: Side panel - rear right side: Side panel - Scratch(es) - Smart repair



Damage 8: Side panel - rear right side: Side panel - Scratch(es) - Smart repair



Damage 9: Rear bumper: Rear bumper - Scratched - Paint



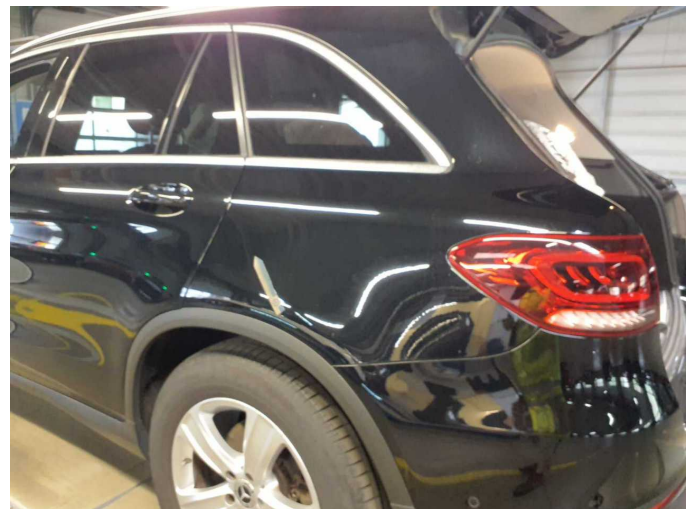
Damage 9: Rear bumper: Rear bumper - Scratched - Paint



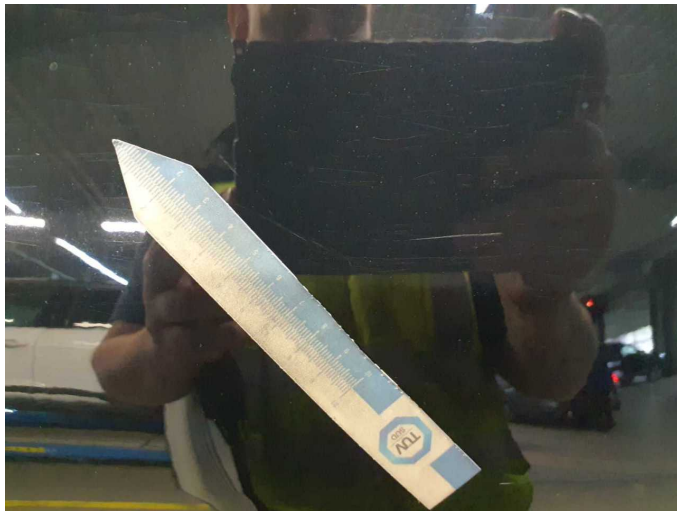
Damage 9: Rear bumper: Rear bumper - Scratched - Paint



Damage 9: Rear bumper: Rear bumper - Scratched - Paint



Damage 10: Side panel - rear left side: Side panel - Scratched - Paint



Damage 10: Side panel - rear left side: Side panel - Scratched - Paint



Damage 10: Side panel - rear left side: Side panel - Scratched - Paint



Damage 10: Side panel - rear left side: Side panel - Scratched - Paint



Repainting 1: Mudguard - right side



Repainting 1: Mudguard - right side



Repainting 2: Bonnet



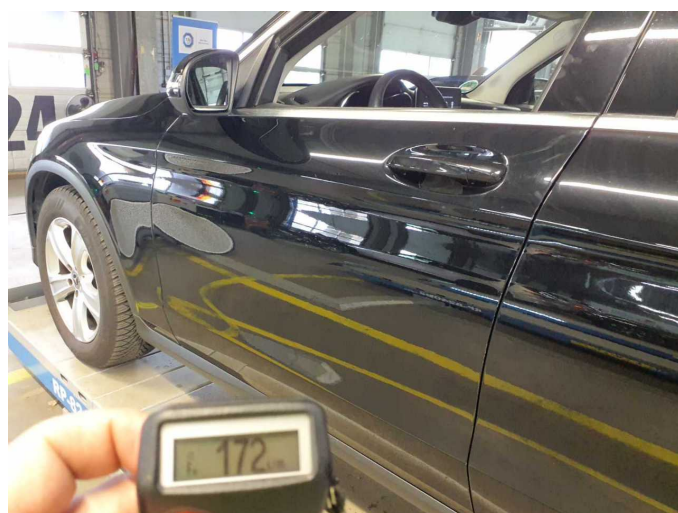
Repainting 2: Bonnet



Repainting 3: Side panel - rear left side



Repainting 3: Side panel - rear left side



Repainting 4: Door - front left side



Repainting 4: Door - front left side