



Expertise

Protocol number: 41500633  
Order No. / Reference: 25090400  
Inspection date: 11 Sept 2025

Manufacturer: Mercedes-Benz

Model: GLC 300 e 4Matic 9G-TRONIC Exclusive

VIN: W1N2539531F853402



Vehicle details	
Manufacturer / Type / Model / Equipment	
Mercedes-Benz GLC 300 e 4Matic 9G-TRONIC Exclusive	
Vehicle Identification number	W1N2539531F853402
Mileage (Read)	106,311 km
First registration	18 Aug 2020
Number of holders	1
Next periodical technical inspection	09/2025
(Report on hand)	
Power / Engine displacement	155 kw / 1,991 ccm
Fuel type / Cylinder	Hybr.B/E ext. edition / 4
Gearbox / Number of gears	Automatic / 9
Type of drive	All-wheel drive
Type of vehicle	SUV
Colour / colour code	POLARWEISS - UNILACK
Doors / Seats	5 / 5
Upholstery type	Cloth / leather combination
Colour of upholstery	Black-Anthracite
Vehicle with smoke odor	no



## Vehicle details

<b>Maintenance booklet / proof</b>	digital proof / incomplete	<b>Next maintenance in</b>	0 km
<b>Last maintenance on / at</b>	08/2024 at 86,934 km		
<b>Key is / should be</b>	2 / 2	<b>FZG documents</b>	ZB#2 (B) was available (copy), ZB#1 (S) was not available
		<b>Letter No.</b>	FT848507
<b>Previous damage / Accident</b>	None detectable	<b>Repainting</b>	None detectable
<b>Inspection conditions</b>	sufficient	<b>Lifting equipment / pit</b>	yes
<b>Test drive</b>	Not performed	<b>Engine function test</b>	Performed
<b>Manufacturer key number/ type code number</b>	2222 / AKU 00014		
<b>Emission standard</b>	EURO6;WLTP;DG;PI/CI; M, N1 I	<b>Fine dust sticker</b>	
<b>Permitted total weight</b>	2,615 kg	<b>Empty weight</b>	

## Tyres

### Mounted tyres

#	Tyre size	Type of tyre	Manufacturer	Tread depth
1)	235/60 R18 103V	Summer tyres on Light alloy	Continental	5mm / 5mm
2)	235/60 R18 103V	Summer tyres on Light alloy	Continental	5mm / 5mm

### Additional tyres

#	Tyre size	Type of tyre	Manufacturer	Tread depth
1)	235/60 R18 107V	Winter tyres on Light alloy	Dunlop	5mm / 5mm
2)	235/60 R18 107V	Winter tyres on Light alloy	Dunlop	5mm / 5mm

**Legend:** Tread depth information for tires on the left is in the first place, for tires on the right is in the second place on the axle in the direction of travel

## Equipment

### Standard equipment

- Airbag for driver and front passenger
- Airbag: Sidebag for driver and front passenger (combined thorax/pelvis bag)
- Acoustic Surrounding Area Protection (To ensure that your vehicle does not pose a danger to pedestrians and cyclists, even when driving purely electrically and almost silently, the Acoustic Surrounding Area Protection generates a Mercedes-Benz-specific sound outside the vehicle up to a speed of 30 km/h.)
- ATTENTION ASSIST (can detect typical signs of fatigue through driver behavior and warn the driver of increasing fatigue or inattention)
- On-board computer
- Brake system with larger brake discs on the front axle (perforated front brake discs and front brake calipers with Mercedes-Benz lettering.)
- DYNAMIC SELECT
- Electronic Stability Program (ESP)
- Chassis with higher ground clearance (with this chassis variant, the body is raised by 20 mm)
- Electric parking brake
- Transmission: 9G-TRONIC
- Rear window wiper
- Instrument panel and door edges in ARTICO man-made leather
- Climate: THERMATIC automatic climate control with 2 climate zones (The THERMATIC automatic climate control with 2 climate zones offers individual climate comfort for the front seats: the driver and front passenger can adjust the temperature separately for their side. This is maintained constant thanks to the automatic climate control and the sensitive sensor system, without any manual adjustment.)
- 5-way headrests (4-way adjustable for driver and front passenger and 2-way adjustable in the rear)
- Paint finish: Uni
- LED high-performance headlights (with integrated daytime running lights and LED rear lights)
- Steering column mechanically adjustable in height and length
- Navigation accessories: Advanced MBUX functions (personalization (profiles) and prediction functions - LINGUATRONIC with natural language understanding - activation via "Hey Mercedes" - Wi-Fi hotspot - Internet radio)
- Interior Lighting Package (More light, more atmosphere, better orientation: The interior lighting package provides more comprehensive direct and indirect lighting. The additional lighting elements create a pleasant atmosphere and facilitate operation.)
- Tire pressure monitoring (TPMS)
- Airbag: Kneebag for driver
- Airbag: Windowbags
- Active Brake Assist (can help prevent rear-end collisions with vehicles ahead or stationary vehicles, as well as accidents with moving pedestrians and cyclists. In addition to distance and collision warnings, it also offers brake boost—including autonomous emergency braking.)
- 4MATIC all-wheel drive
- Anti-lock braking system (ABS)
- Automatic passenger airbag deactivation
- Heated exterior mirrors on the left and right, electrically adjustable from the inside (with aspherically curved mirror glass and integrated indicator light)
- Roof rails in polished aluminum
- tachometer
- Third brake light in LED technology
- EASY-Pack load compartment cover (removable)
- Driving light assistant
- 4-way electric window lifter (with comfort operation and anti-pinch protection)
- Velour floor mats in interior color
- Heated rear window (with timer control)
- Interior headliner fabric crystal grey (only in conjunction with upholstery in black (001, 101, 221, 301, 651))
- KEYLESS-GO start function
- Remote trunk lid release
- Instrument cluster with 2 tube-shaped round instruments, 13.97 cm (5.5") multifunction display
- Communication module (LTE) for using Mercedes me connect services (The communication module (LTE) offers you a clear advantage in terms of convenience and safety. It constantly connects the vehicle to the internet, allowing you to use helpful services such as Live Traffic Information from Mercedes me connect. Two mobile network antennas and an LTE-capable SIM card ensure a fast connection.)
- Charging system: AC on-board charger (AC charging)
- Steering wheel: Multifunction sports steering wheel in 3-spoke design in black leather (with black decorative stitching and two-part front trim in silver chrome)
- Mercedes-Benz emergency call system
- Gasoline particulate filter
- Package: Storage (map pockets on the back of the front seats - net on the loading floor - folding box under the loading floor - 12 V socket in the left-hand cargo area - cargo bar - two USB-C ports in the rear)
- Upholstery: ARTICO man-made leather/Grenoble fabric
- Radio: MBUX multimedia system
- Radio accessories: Digital radio



- Remote Services Plus (The Remote Services Plus package transforms mobility into a new experience, offering greater comfort and safety. Status queries provide information about the range. You can remotely control certain functions and locate your vehicle. Services such as Maintenance Management coordinate service appointments, saving you valuable time.)
- Power steering
- Seats: I-Size child restraint system on the outer rear seats
- Seats: Front seats electrically adjustable (with electrical adjustment for seat height and backrest angle as well as mechanical adjustment for longitudinal adjustment and headrests)
- High-visibility vest for drivers
- Immobiliser
- Central locking (with interior switch, automatic locking (can be switched off) and crash sensor with emergency opening)
- Radio accessories: Touchpad (integrated into the center console, including a palm rest - single and multi-finger gestures, swiping movements, and zoom gestures by spreading and pinching the fingers - recognizes handwritten characters: letters, special characters, and numbers - clear haptic feedback)
- Wheels: 45.7 cm (18") light alloy wheels, 4-spoke design (vanadium silver painted with 235/60 R18 and 8 J x 18 ET 38)
- Windscreen wipers with rain sensor
- Seats: Folding rear seat backrests (40/20/40 split including Easy Pack Quickfold and center armrest with double cup holder and storage compartment)
- Cruise control (Drive in a relaxed and fuel-efficient manner, especially on longer journeys. Select your desired speed, and your vehicle will automatically control the speed. In addition to maintaining your cruising speed, the speed limiter helps you maintain a maximum speed. This increases road safety and protects you from expensive fines.)
- Decorative elements: Wood Linden linestructure brown glossy

### Extra equipment

- Ambient lighting (Design the interior according to your personal preferences or current mood. With a total of 64 colors, the ambient lighting offers almost unlimited lighting possibilities and has the right color for every situation. Illuminated door sills on the driver and passenger sides.)
- Package: Advanced Light (LED High Performance headlights and adaptive rear lights in LED technology Adaptive High Beam Assistant)
- Package: Advanced Park (Parking package with rear view camera Active Parking Assist with PARKTRONIC)
- Package: High-End Assistance (Mirror package: Electrically folding exterior mirrors, lowerable right exterior mirror, automatic dimming function. Driving Assistance package: Active Distance Assist DISTRONIC, Active Steering Assist, Active Brake Assist, Evasive Steering Assist, Active Lane Keeping Assist, Active Blind Spot Assist, PRE-SAFE PLUS)
- Package: High-End Infotainment (Media display with touchscreen operation, Smartphone integration: Apple CarPlay and Android Auto, Navigation connectivity package, Traffic Sign Assistant: thanks to the intelligent integration of camera and map data, it can detect not only speed limits, overtaking bans, and their cancellation, but also MBUX Augmented Reality for navigation, fully digital instrument display, and wireless charging system for mobile devices in the dashboard compartment)
- Partition net for luggage compartment separation (and occupant protection)
- Heat and sound-insulating acoustic glass (The heat and sound-insulating acoustic glass for the front side windows offers you greater noise comfort.)
- Decorative elements: open-pored brown walnut wood
- Trailer hitch with ESP trailer stabilization (fully electrically foldable and extendable)
- EASY-Pack tailgate with electric operation for opening and closing
- Charging cable for wallboxes and public charging stations, 5 m, smooth (This charging cable, also called a Mode 3 cable, allows you to charge your vehicle battery at a wallbox or public charging stations with up to 11 kW (Type 2, 3-phase, 20 A).)
- Package: Business (for plug-in hybrid vehicles) (Advanced Parking Package: Active Parking Assistant PARKTRONIC with rearview camera; Advanced Infotainment Package: Media display with touch operation, smartphone integration - Apple CarPlay and Android Auto; Connectivity Package Navigation; Traffic Sign Assistant; Comfort Package: Seat heating for driver and front passenger; Seat Comfort Package - electric and manual adjustment options for the front seats)
- Package: Public Charging (includes the Mercedes me Charge service and the Mode 3 charging cable)
- Radio accessories: Advanced Sound System (9 speakers and 225 watts of system power. The sound system also enhances your driving pleasure acoustically. The speaker system, precisely tuned to the interior, offers dynamic music playback.)
- Phone: Multifunctional telephony (wireless connection of mobile phone with external antenna - wireless charging for compatible mobile phones - Bluetooth and Wi-Fi pairing wirelessly via NFC (Near Field Communication) technology)
- Heat-insulating dark tinted glass all around from B-pillar



## Brief expert findings

Documents submitted	At the time of the inspection, the registration certificate Part 2 (letter) was available, but the registration certificate Part 1 (certificate) was not. (Copy)
VIN comparison	The vehicle identification number (VIN) was read from the vehicle and its conformity with the submitted documents was verified during the inspection by the undersigned.
Inspection	The inspection conditions were sufficient for the assessment of the vehicle. Lifting equipment and a pit were available for examining the vehicle.
Test drive	No test drive/maneuvering was carried out during the inspection of the vehicle.
Engine function test	An engine test run was performed.

## Value reducing factors

No.	Component group	Description
1	Indicator - front	Mirror - right side - Scratched - Replace
2	Trim / covers	Door trim - rear left side - Damaged - Smart repair
3	Trim / covers	Door trim - rear right side - Damaged - Smart repair
4	Side panel - rear right side	Sill - Dent / paintcoat damage - Smart repair
5	Seat - rear	Upholstery - Damaged - Replace
6	Misc.	Inspection / maintenance - Due - Perform

## Wear and tear

No.	Component group	Description
1	Misc.	Inspection / maintenance - No evidence - No deduction
2	Side panel - rear left side	Sill - dent(s) - No deduction
3	Rear bumper	Rear bumper - Scratch(es) - No deduction

The vehicle shows signs of wear commensurate with its age and use.

## Order/Scope of order

The order was placed to prepare a sales report for the vehicle described. This includes the following:

- Description of core relevant information about the vehicle
- Documentation of equipment features  
(*Delivery by third-party service providers*)
- Documentation of damage, defects, missing parts
- Documentation of previous damage, unrepaired previous damage, repainting
- a brief visual or functional inspection of the equipment details if possible.  
(*Functional tests of driver assistance systems are not included in the scope of services!*)
- a photo documentation of the vehicle



## Basis for the order

This product is based on the Alphabet Fuhrpark GmbH guidelines for vehicle returns and valuations. The expert makes the explicit findings in each individual case objectively within the framework of the specified standards based on his or her own expertise.

The vehicle inspection takes place in a disassembled state.

Damage or defects that can only be detected during disassembly/diagnosis work or through advanced knowledge remain within the scope of the prognosis risk. An extended risk exists for concealed defects caused by fraudulent deception and not identifiable by the expert.

Damage or defects resulting from normal use or wear and tear of the vehicle will be accepted according to the applicable standard.

There was no explicit identification or monetary consideration of the expected features within the product.

Features which in their nature and severity slightly exceed normal use but do not constitute unacceptable damage will be documented and identified under signs of use if necessary.

Damage or defects which, according to the underlying standard, can no longer be attributed to normal use or wear and tear are listed in the product under "Depreciating Factors".

Depending on the product specification, a monetary ID can be provided. If this takes place, the costs can be 100% d or pro rata depending on the vehicle's age and mileage.

## Previous damages

Apparently, no repaired previous damage could be found on the vehicle.

## Comments

- Winterradsatz ist kein Bestandteil des Auslieferungsumfangs





Figure 1: Diagonal front (left)



Figure 2: Diagonal front (right)



Figure 3: Diagonal rear (left)



Figure 4: Diagonal rear (right)



Figure 5: Interior - front



Figure 6: Interior - rear





Figure 7: Instrument cluster



Figure 8: Instrument panel



Figure 9: Interior 360° view



Figure 10: Cargo area



Figure 11: VIN



Figure 12: Mounted tyres



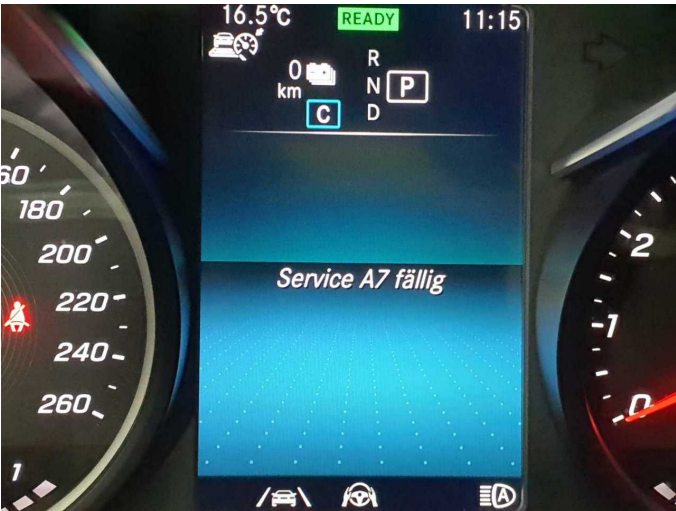


Figure 13: Documents



Figure 14: Documents



Figure 15: Documents



Figure 16: Additional tyres



Figure 17: Navigation



Figure 18: Misc.





Figure 19: Misc.



Figure 20: Misc.



Figure 21: Misc.



Figure 22: Misc.



Figure 23: Misc.

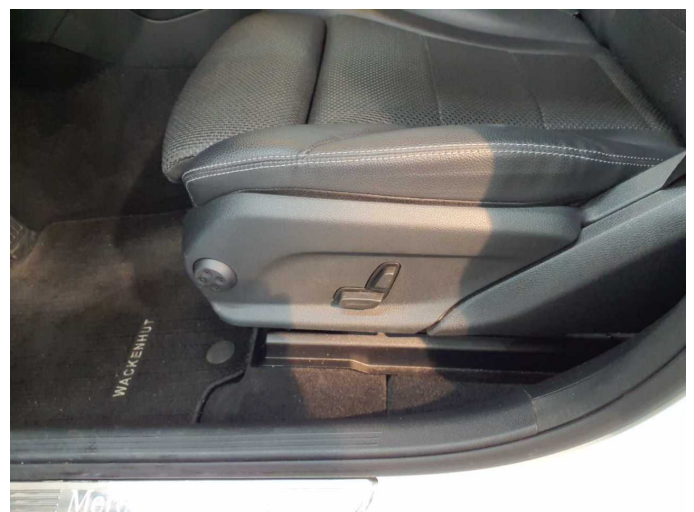


Figure 24: Misc.





Figure 25: Misc.



Figure 26: Misc.

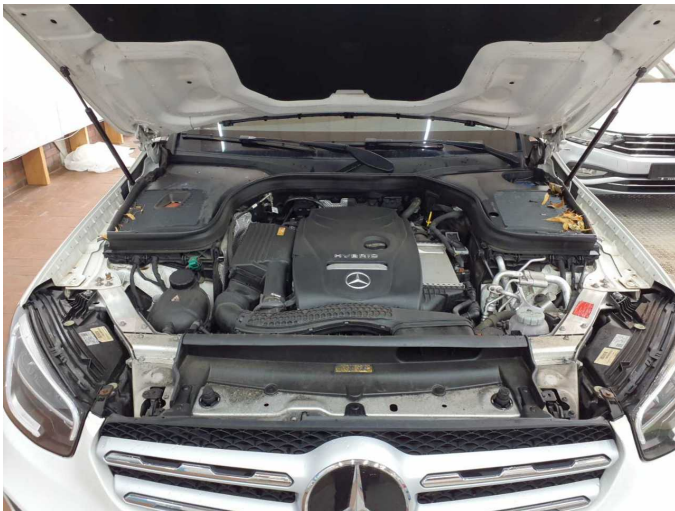


Figure 27: Misc.



Figure 28: Misc.



Figure 29: Misc.

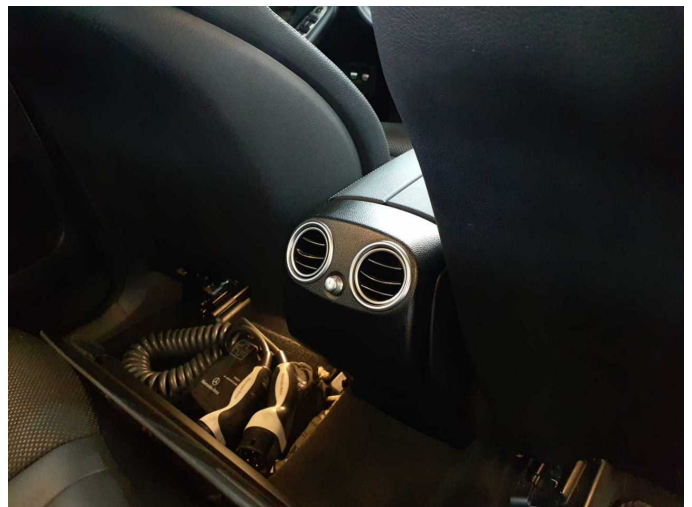


Figure 30: Misc.





Figure 31: Misc.

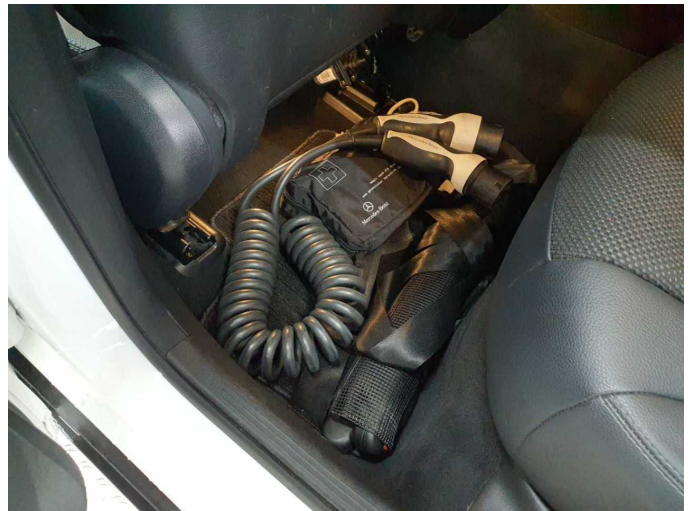


Figure 32: Misc.

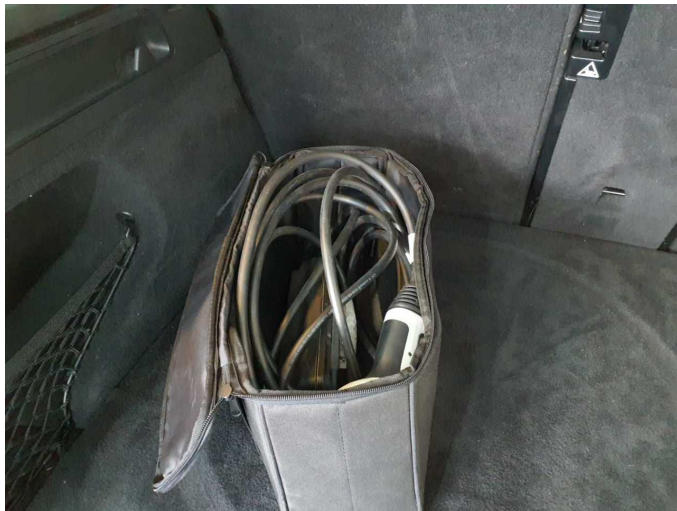


Figure 33: Misc.



Figure 34: Misc.



Figure 35: Misc.



Figure 36: Misc.





**Figure 37:** Misc.



**Figure 38:** Misc.



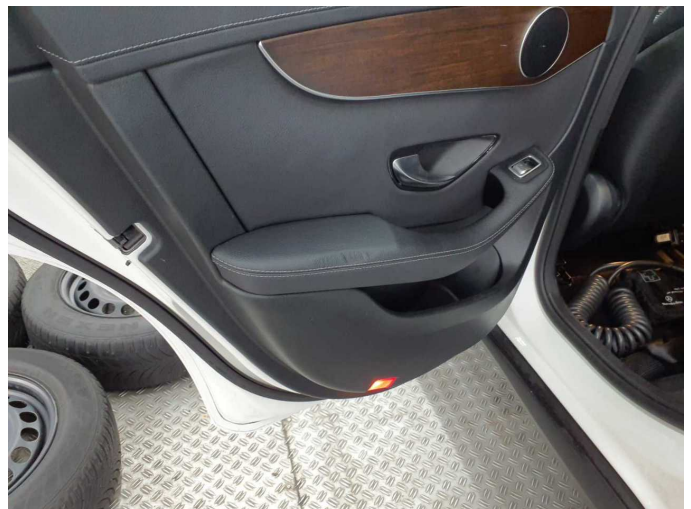
**Damage 1:** Indicator - front: Mirror - right side - Scratched - Replace



**Damage 1:** Indicator - front: Mirror - right side - Scratched - Replace



**Damage 2:** Trim / covers: Door trim - rear left side - Damaged - Smart repair



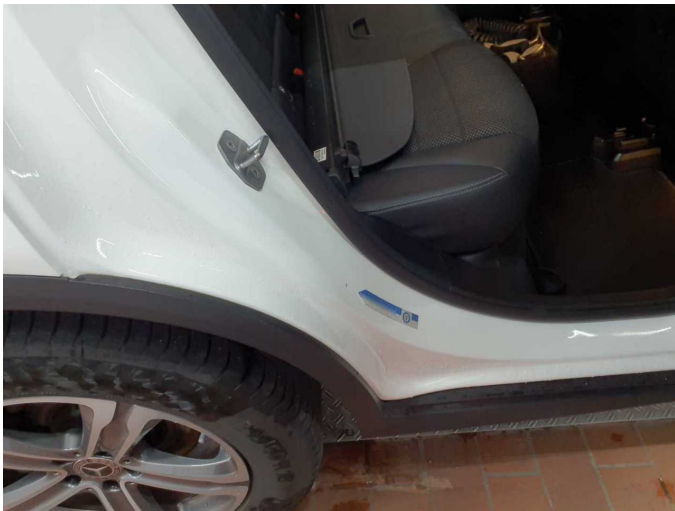
**Damage 2:** Trim / covers: Door trim - rear left side - Damaged - Smart repair



**Damage 3:** Trim / covers: Door trim - rear right side - Damaged - Smart repair



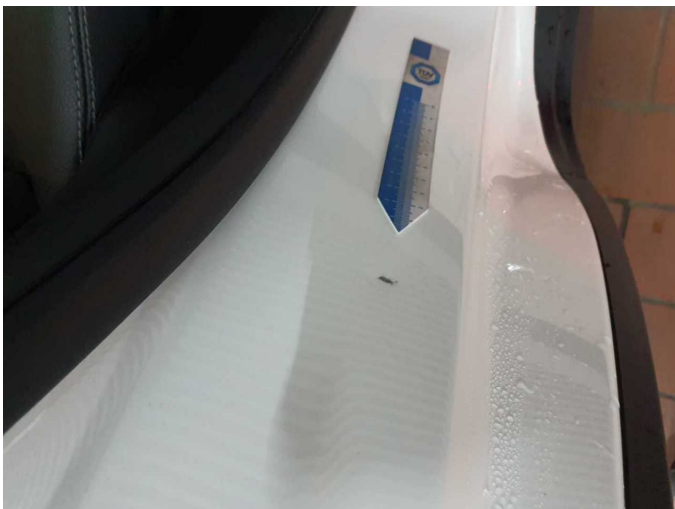
**Damage 3:** Trim / covers: Door trim - rear right side - Damaged - Smart repair



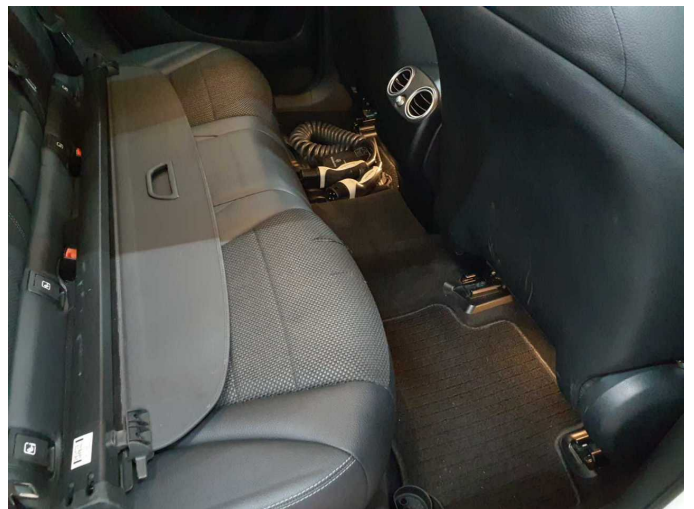
**Damage 4:** Side panel - rear right side: Sill - Dent / paintcoat damage - Smart repair



**Damage 4:** Side panel - rear right side: Sill - Dent / paintcoat damage - Smart repair

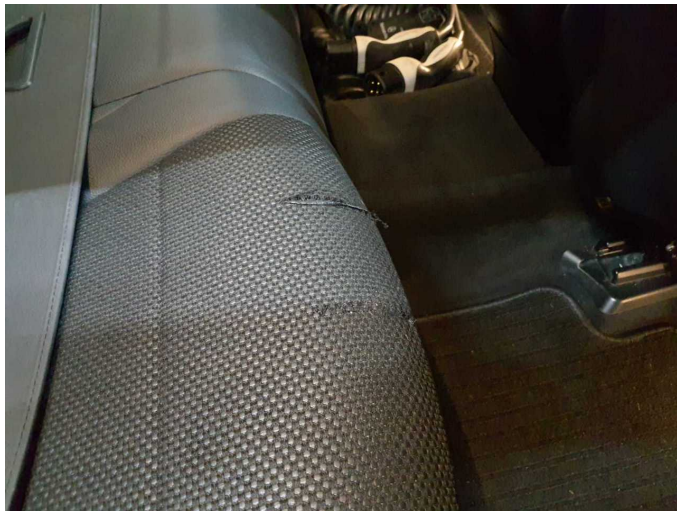


**Damage 4:** Side panel - rear right side: Sill - Dent / paintcoat damage - Smart repair

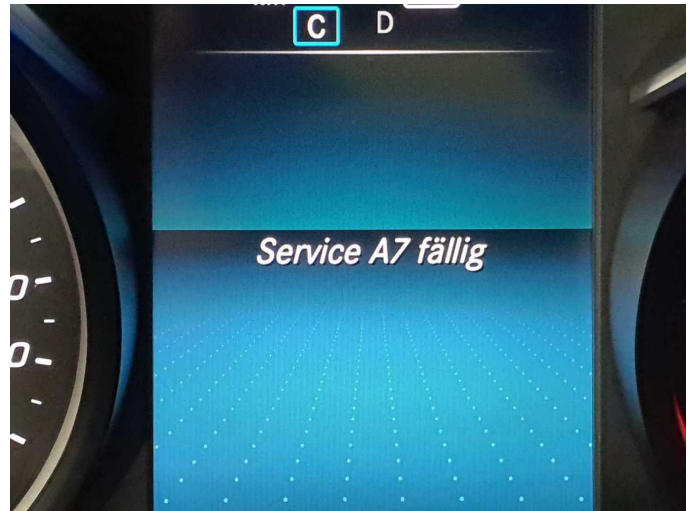


**Damage 5:** Seat - rear: Upholstery - Damaged - Replace





**Damage 5:** Seat - rear: Upholstery - Damaged - Replace



**Damage 6:** Misc.: Inspection / maintenance - Due - Perform



**Wear and tear 2:** Side panel - rear left side: Sill - dent(s) - No deduction



**Wear and tear 2:** Side panel - rear left side: Sill - dent(s) - No deduction



**Wear and tear 3:** Rear bumper: Rear bumper - Scratch(es) - No deduction



**Wear and tear 3:** Rear bumper: Rear bumper - Scratch(es) - No deduction



# Wartungshistorie

(gemäß Auftraggeber Informationen)

Fahrgestellnummer: W1N2539531F853402

Hersteller / Modell: MERCEDES-BENZ MB GLC 300 e 4Matic 9G-TRONIC Exclusive

Datum	KM-Stand	Beschreibung
02.08.2024	86.934	Regelwartungsdienst
07.09.2023	66.313	HU + AU
22.08.2023	66.245	Regelwartungsdienst
18.08.2022	43.517	Regelwartungsdienst
29.07.2021	20.804	Kleine Inspektion