



Expertise

Protocol number: 41443529
Order No. / Reference: 25179321
Inspection date: 9 Sept 2025

Manufacturer: Mercedes-Benz

Model: GLC 300 d 4Matic 9G-TRONIC AMG Line

VIN: W1N2539191G064461



Vehicle details	
Manufacturer / Type / Model / Equipment	
Mercedes-Benz GLC 300 d 4Matic 9G-TRONIC AMG Line	
Vehicle Identification number	W1N2539191G064461
Mileage (Read)	123,423 km
First registration	15 Mar 2022
Number of holders	1
Power / Engine displacement	180 kw / 1,950 ccm
Fuel type / Cylinder	Diesel / 4
Gearbox / Number of gears	Automatic / 9
Type of drive	All-wheel drive
Type of vehicle	SUV
Colour / colour code	CAVANSITBLAU - METALLICLACK
Doors / Seats	5 / 5
Upholstery type	Cloth / leather combination
Colour of upholstery	Black



Vehicle details

Maintenance booklet / proof	digital proof / complete	Next maintenance in	800 km
Last maintenance on / at	12/2024 at 99,251 km		
Key is / should be	2 / 2	FZG documents	ZB#2 (B) was available (copy), ZB#1 (S) was not available
		Letter No.	GF810508
Previous damage / Accident	None detectable	Repainting	None detectable
Inspection conditions	sufficient	Lifting equipment / pit	yes
Test drive	Not performed	Engine function test	Performed
Manufacturer key number/ type code number	2222 / AKC 00173		
Emission standard	EURO6;WLTP;AP;PI/CI; M, N1 I	Fine dust sticker	
Permitted total weight	2,510 kg	Empty weight	

Tyres

Mounted tyres

#	Tyre size	Type of tyre	Manufacturer	Tread depth
1)	235/55 R19 105W	Summer tyres on Light alloy	Continental	5mm / 5mm
2)	235/55 R19 105W	Summer tyres on Light alloy	Continental	5mm / 5mm

Additional tyres

#	Tyre size	Type of tyre	Manufacturer	Tread depth
1)	235/60 R18 103H	Winter tyres on Light alloy	Bridgestone	3mm / 3mm
2)	235/60 R18 103H	Winter tyres on Light alloy	Bridgestone	3mm / 3mm

Legend: Tread depth information for tires on the left is in the first place, for tires on the right is in the second place on the axle in the direction of travel

Equipment

Standard equipment

- | | |
|--|---|
| <ul style="list-style-type: none"> • Airbag for driver and front passenger • Airbag: Sidebag for driver and front passenger • Active Brake Assist • Anti-lock braking system (ABS) • Automatic passenger airbag deactivation • On-board computer • Roof rails in polished aluminum • tachometer • DYNAMIC SELECT • Electronic Stability Program (ESP) • 4-way electric window lifter • Floor mats in black with AMG lettering • Rear window heated • Interior headliner fabric crystal grey • Climate: THERMATIC automatic climate control with 2 climate zones • Communication module (LTE) for the use of Mercedes me connect services • LED high-performance headlights • Steering column mechanically adjustable in height and length • Mercedes-Benz emergency call system • Package: Storage • Package: OFF-ROAD Exterior • Radio: MBUX multimedia system • Radio accessories: Digital radio • Tire pressure monitoring (TPMS) • Windscreen wipers with rain sensor • Seat: Front sports seats • Seats: I-Size child restraint system on the outer rear seats • Cruise control • Immobiliser • Decorative elements: piano lacquer look black/aluminium with light longitudinal grain | <ul style="list-style-type: none"> • Airbag: Kneebag for driver • Airbag: Windowbags • 4MATIC all-wheel drive • ATTENTION ASSIST • Exterior mirrors left and right heated, electrically adjustable from the inside • diesel particulate filter • Third brake light in LED technology • EASY-Pack load compartment cover (removable) • Driving light assistant • Electric parking brake • Transmission: 9G-TRONIC • Rear window wiper • KEYLESS-GO start function • Remote trunk lid release • Instrument cluster with 2 tube-shaped round instruments, 13.97 cm (5.5") multifunction display • 5-way headrests • Steering wheel: 3-spoke multifunction sports steering wheel in black nappa leather • Steering: Sport Direct-Steer • Navigation accessories: Advanced functions MBUX • Package: Interior light • Upholstery: ARTICO man-made leather/DINAMICA microfiber • Radio accessories: Touchpad • Remote Services Plus • Power steering • Seats: Folding rear seat backrests • Seats: Front seats electrically adjustable • High-visibility vest for drivers • Central locking |
|--|---|

Extra equipment

- | | |
|--|--|
| <ul style="list-style-type: none"> • Active Distance Assist DISTRONIC (You won't want to be without this sophisticated system, especially in congested traffic or traffic jams. Active Distance Assist DISTRONIC takes the strain off you and automatically regulates the distance to the vehicle ahead. In conjunction with Traffic Sign Recognition, you can conveniently adopt detected speed limits at the touch of a button.) • Chassis: AGILITY CONTROL chassis (with selective damping system) • Navigation accessories: Live Traffic Information pre-installation (With Live Traffic Information, your navigation system receives real-time traffic data and optimizes dynamic route guidance. Accurate and up-to-date information on traffic jams, stop-and-go traffic, and more helps you reduce travel times.) | <ul style="list-style-type: none"> • Ambient lighting (Design the interior according to your personal preferences or current mood. With a total of 64 colors, the ambient lighting offers almost unlimited lighting possibilities and has the right color for every situation. Illuminated door sills on the driver and passenger sides.) • EASY-Pack tailgate with electric operation for opening and closing • Head-up display • Paint finish: metallic • Package: Advanced Light (LED High Performance headlights and adaptive rear lights in LED technology Adaptive High Beam Assistant) • Package: AIR-BALANCE (including ionization, improved air filtration and fragrance) |
|--|--|



- Package: Business (Advanced Parking Package: Active Parking Assistant PARKTRONIC with rearview camera; Advanced Infotainment Package: Media display with touch operation, smartphone integration - Apple CarPlay and Android Auto; Connectivity Package Navigation; Traffic Sign Assistant; Comfort Package: Seat heating for driver and front passenger; Seat Comfort Package - electric and manual adjustment options for the front seats; Fuel tank with larger capacity)
- Package: High End Park (Parking package with 360° camera Active Parking Assistant with PARKTRONIC)
- Package: Mirrors (Electrically folding exterior mirrors, lowerable right exterior mirrors with automatic dimming function)
- Wheels: 48.3 cm (19") AMG light-alloy wheels in 5-twin-spoke design (painted tremolite grey with a high-sheen finish, 235/55 R19 with 8 J x 19 ET 38)
- Auxiliary heating including auxiliary ventilation in summer
- TIREFIT with tire inflation compressor
- Fully digital instrument display (The fully digital instrument display with Classic, Progressive, and Sporty display styles lets you decide which information is important to you and how it is displayed. The 31.2 cm (12.3") display delivers a razor-sharp image that is easy to read in all lighting conditions.)
- Decorative elements: Black open-pore ash wood / light longitudinally ground aluminum
- Package: AMG Line Exterior (AMG styling, consisting of an AMG front apron with sporty air intakes and chrome trim, an AMG rear apron in a diffuser look with a black insert, a diamond grille with chrome pins, an integrated Mercedes star, and a matt iridium silver louver with chrome inserts, 48.3 cm (19") AMG 5-twin-spoke alloy wheels, painted in tremolite grey with a high-sheen finish, 235/55 R19 tires on 8 J x 19 ET 38, a sports suspension with sports direct-steer system, and two visible tailpipe trims integrated into the bumper)
- Package: Comfort (Seat heating for driver and front passenger, electric and manual adjustment options for driver and front passenger seats, electro-pneumatic 4-way lumbar support and lateral support adjustment with control element on the seat, electric seat cushion tilt adjustment, electric height adjustment, electric backrest adjustment, mechanical seat cushion depth adjustment by 6 cm with leg rest pad, mechanical length adjustment, mechanical headrest adjustment)
- Partition net for luggage compartment separation (and occupant protection)
- Elimination of type marking on the trunk lid
- Heat and sound-insulating acoustic glass (The heat and sound-insulating acoustic glass for the front side windows offers you greater noise comfort.)
- Heat-insulating dark tinted glass all around from B-pillar

Brief expert findings

Documents submitted	At the time of the inspection, the registration certificate Part 2 (letter) was available, but the registration certificate Part 1 (certificate) was not. (Copy)
VIN comparison	The vehicle identification number (VIN) was read from the vehicle and its conformity with the submitted documents was verified during the inspection by the undersigned.
Inspection	The inspection conditions were sufficient for the assessment of the vehicle. Lifting equipment and a pit were available for examining the vehicle.
Test drive	No test drive/maneuvering was carried out during the inspection of the vehicle.
Engine function test	An engine test run was performed.

Value reducing factors

No.	Component group	Description
1	Mudguard - left side	Mudguard - left side - Scratch(es) - Paint
2	Vehicle glazing	Windscreen (Randbereich) - Stone chips - Replace

Wear and tear

No.	Component group	Description
1	Bonnet	Bonnet - Stone chips - No deduction
2	Rear bumper	Rear bumper - Scratch(es) - No deduction
3	Front bumper	Front bumper - Stone chips - No deduction
4	Interior	Interior - Scratch(es) - No deduction

The vehicle shows signs of wear commensurate with its age and use.



Order/Scope of order

The order was placed to prepare a sales report for the vehicle described. This includes the following:

- Description of core relevant information about the vehicle
- Documentation of equipment features
(Delivery by third-party service providers)
- Documentation of damage, defects, missing parts
- Documentation of previous damage, unrepaired previous damage, repainting
- a brief visual or functional inspection of the equipment details if possible.
(Functional tests of driver assistance systems are not included in the scope of services!)
- a photo documentation of the vehicle

Basis for the order

This product is based on the Alphabet Fuhrpark GmbH guidelines for vehicle returns and valuations. The expert makes the explicit findings in each individual case objectively within the framework of the specified standards based on his or her own expertise.

The vehicle inspection takes place in a disassembled state.

Damage or defects that can only be detected during disassembly/diagnosis work or through advanced knowledge remain within the scope of the prognosis risk. An extended risk exists for concealed defects caused by fraudulent deception and not identifiable by the expert.

Damage or defects resulting from normal use or wear and tear of the vehicle will be accepted according to the applicable standard.

There was no explicit identification or monetary consideration of the expected features within the product.

Features which in their nature and severity slightly exceed normal use but do not constitute unacceptable damage will be documented and identified under signs of use if necessary.

Damage or defects which, according to the underlying standard, can no longer be attributed to normal use or wear and tear are listed in the product under "Depreciating Factors".

Depending on the product specification, a monetary ID can be provided. If this takes place, the costs can be 100% d or pro rata depending on the vehicle's age and mileage.

Previous damages

Apparently, no repaired previous damage could be found on the vehicle.

Comments

- Der 2.Radsatz gehört nicht zur Ausstattung und wurde nicht in der Bewertung berücksichtigt.



Figure 1: Diagonal front (left)



Figure 2: Diagonal front (right)



Figure 3: Diagonal rear (left)



Figure 4: Diagonal rear (right)



Figure 5: Interior - front



Figure 6: Interior - rear



Figure 7: Instrument cluster



Figure 8: Instrument panel



Figure 9: Interior 360° view ([Online link](#))



Figure 10: Cargo area



Figure 11: VIN



Figure 12: Mounted tyres



Figure 13: Documents



Figure 14: Documents

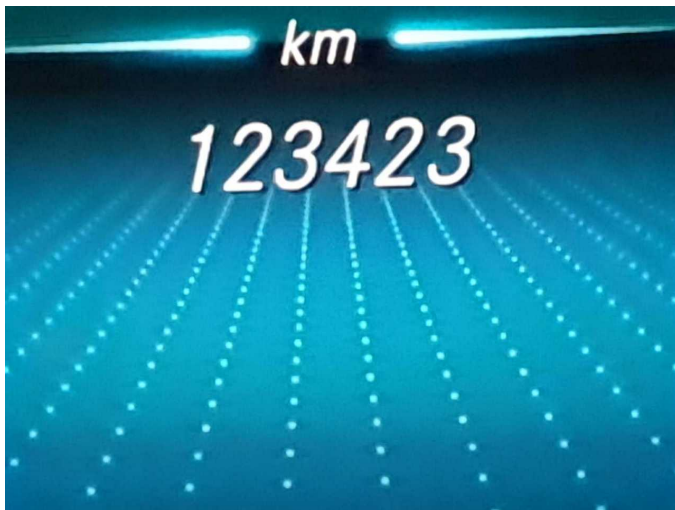


Figure 15: Documents



Figure 16: Additional tyres



Figure 17: Additional tyres



Figure 18: Navigation



Figure 19: Misc.

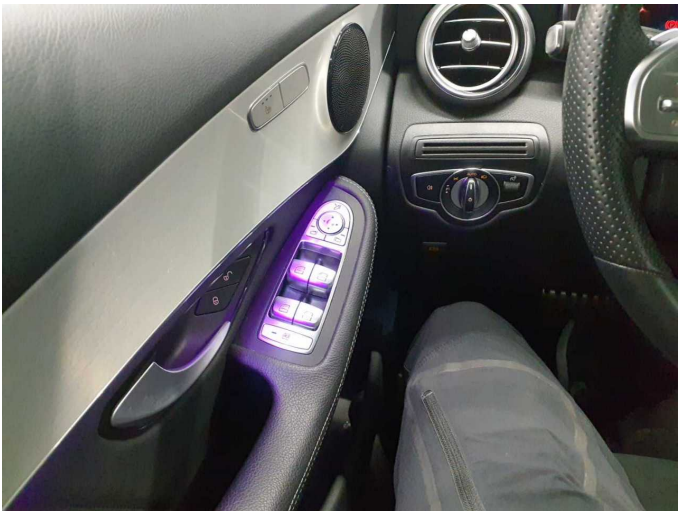


Figure 20: Misc.



Figure 21: Misc.



Figure 22: Misc.



Figure 23: Misc.

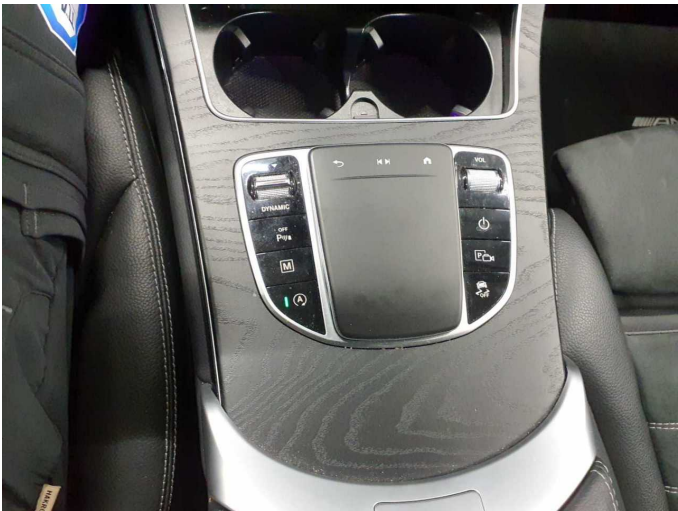


Figure 24: Misc.



Figure 25: Misc.



Figure 26: Misc.



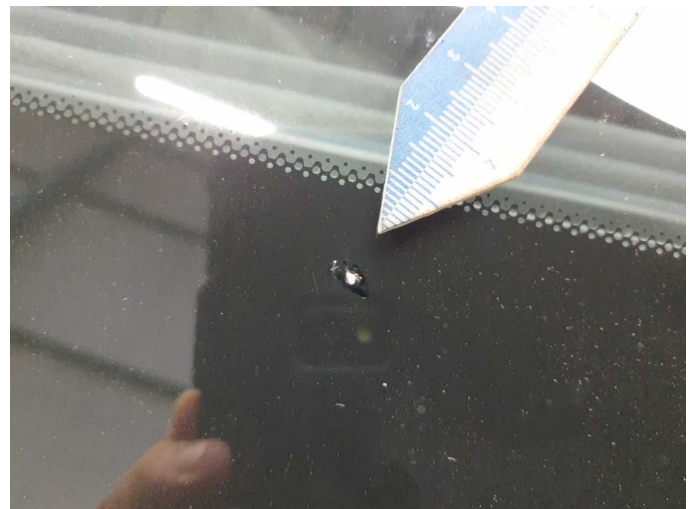
Figure 27: Misc.



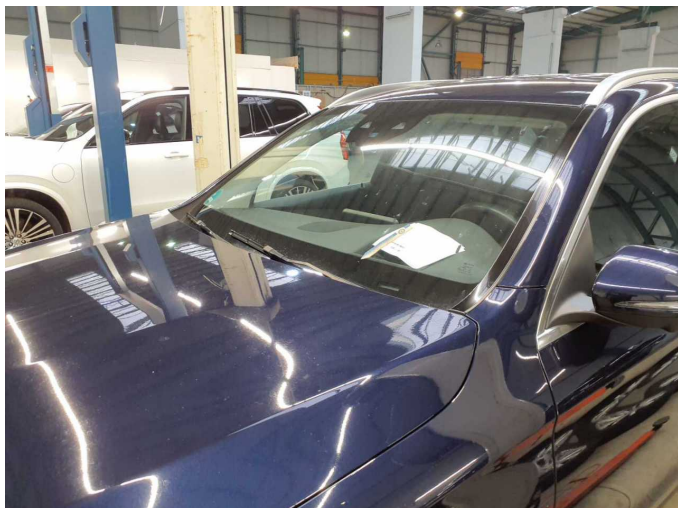
Damage 1: Mudguard - left side: Mudguard - left side - Scratch(es) - Paint



Damage 1: Mudguard - left side: Mudguard - left side - Scratch(es) - Paint



Damage 2: Vehicle glazing: Windscreen (Randbereich) - Stone chips - Replace



Damage 2: Vehicle glazing: Windscreen (Randbereich) - Stone chips - Replace



Wartungshistorie

(gemäß Auftraggeber Informationen)

Fahrgestellnummer: W1N2539191G064461

Hersteller / Modell: MERCEDES-BENZ MB GLC 300 d 4Matic 9G-TRONIC AMG Line

Datum	KM-Stand	Beschreibung
04.03.2025	105.902	AU
10.12.2024	99.251	Bremsscheiben hinten; Regelwartungsdienst
30.04.2024	74.766	Regelwartungsdienst
02.10.2023	52.841	Bremsinspektion vo + hi; Regelwartungsdienst
14.12.2022	23.774	Regelwartungsdienst