



Expertise

Protocol number: 41202389
Order No. / Reference: 25082791
Inspection date: 26 Aug 2025

Manufacturer: Mercedes-Benz

Model: GLC 220 d 4Matic 9G-TRONIC AMG Line

VIN: W1N2539151V304629



Vehicle details	
Manufacturer / Type / Model / Equipment	
Mercedes-Benz GLC 220 d 4Matic 9G-TRONIC AMG Line	
Vehicle Identification number	W1N2539151V304629
Mileage (Read)	52,784 km
First registration	10 Jun 2021
Number of holders	1
Next periodical technical inspection	09/2026
(Report not on hand)	
Power / Engine displacement	143 kw / 1,950 ccm
Fuel type / Cylinder	Diesel / 4
Gearbox / Number of gears	Automatic / 9
Type of drive	All-wheel drive
Type of vehicle	SUV
Colour / colour code	OBSIDIANSCHWARZ - METALLICLACK
Doors / Seats	5 / 5
Upholstery type	Cloth / leather combination
Colour of upholstery	Black
Vehicle with smoke odor	no



Vehicle details

Maintenance booklet / proof	digital proof / complete	Next maintenance in	343 Tag(e)
Last maintenance on / at	08/2025 at 52,494 km		
Key is / should be	2 / 2	FZG documents	ZB#2 (B) was available (copy), ZB#1 (S) was not available
		Letter No.	GC605023
Previous damage / Accident	Detectable	Repainting	None detectable
Inspection conditions	sufficient	Lifting equipment / pit	yes
Test drive	Not performed	Engine function test	Performed
Manufacturer key number/ type code number	2222 / AKG 00199		
Emission standard	EURO6;WLTP;AP;PI/CI; M, N1 I	Fine dust sticker	
Permitted total weight	2,500 kg	Empty weight	

Tyres

Mounted tyres

#	Tyre size	Type of tyre	Manufacturer	Tread depth
1)	235/55 R19 101V	Summer tyres on Light alloy	Bridgestone	4mm / 4mm
2)	235/55 R19 101V	Summer tyres on Light alloy	Bridgestone	5mm / 5mm

Additional tyres

#	Tyre size	Type of tyre	Manufacturer	Tread depth
1)	235/60 R18 107H	Winter tyres on Light alloy	Goodyear	7mm / 7mm
2)	235/60 R18 107H	Winter tyres on Light alloy	Goodyear	7mm / 7mm

Legend: Tread depth information for tires on the left is in the first place, for tires on the right is in the second place on the axle in the direction of travel



Equipment

Standard equipment

- Airbag for driver and front passenger
- Airbag: Sidebag for driver and front passenger
- Active Brake Assist
- Anti-lock braking system (ABS)
- Automatic passenger airbag deactivation
- On-board computer
- Roof rails in polished aluminum
- tachometer
- DYNAMIC SELECT
- Electronic Stability Program (ESP)
- 4-way electric window lifter
- Floor mats in black with AMG lettering
- Rear window heated
- Interior headliner fabric black
- Climate: THERMATIC automatic climate control with 2 climate zones
- Communication module (LTE) for the use of Mercedes me connect services
- LED high-performance headlights (with integrated daytime running lights and LED rear lights)
- Steering column mechanically adjustable in height and length
- Navigation accessories: Advanced MBUX functions (personalization (profiles) and prediction functions - LINGUATRONIC with natural language understanding - activation via "Hey Mercedes" - Wi-Fi hotspot - Internet radio)
- Upholstery: ARTICO man-made leather/DINAMICA microfiber
- Radio accessories: Digital radio
- Radio accessories: Touchpad
- Tire pressure monitoring (TPMS)
- Windscreen wipers with rain sensor
- Seat: Front sports seats
- Seats: I-Size child restraint system on the outer rear seats
- Cruise control
- Immobiliser
- Decorative elements: piano lacquer look black/aluminium with light longitudinal grain
- Airbag: Kneebag for driver
- Airbag: Windowbags
- 4MATIC all-wheel drive
- ATTENTION ASSIST
- Exterior mirrors left and right heated, electrically adjustable from the inside
- diesel particulate filter
- Third brake light in LED technology
- EASY-Pack load compartment cover (removable)
- Driving light assistant
- Electric parking brake
- Transmission: 9G-TRONIC
- Rear window wiper
- KEYLESS-GO start function
- Remote trunk lid release
- Instrument cluster with 2 tube-shaped round instruments, 13.97 cm (5.5") multifunction display
- 5-way headrests
- Steering wheel: 3-spoke multifunction sports steering wheel in black nappa leather
- Steering: Sport Direct-Steer
- Mercedes-Benz emergency call system
- Package: Storage (map pockets on the back of the front seats - net on the loading floor - folding box under the loading floor - 12 V socket in the left-hand cargo area - cargo bar - two USB-C ports in the rear)
- Interior Lighting Package (More light, more atmosphere, better orientation: The interior lighting package provides more comprehensive direct and indirect lighting. The additional lighting elements create a pleasant atmosphere and facilitate operation.)
- Remote Services Plus
- Power steering
- Seats: Folding rear seat backrests
- Seats: Front seats electrically adjustable
- High-visibility vest for drivers
- Central locking

Extra equipment

- Ambient lighting (Design the interior according to your personal preferences or current mood. With a total of 64 colors, the ambient lighting offers almost unlimited lighting possibilities and has the right color for every situation. Illuminated door sills on the driver and passenger sides.)
- Heat and sound-insulating acoustic glass (The heat and sound-insulating acoustic glass for the front side windows offers you greater noise comfort.)
- Chassis: Sports chassis (passive selective damping system - firmer suspension and damping - sports direct-steer system)
- Elimination of type marking on the trunk lid
- Navigation accessories: Live Traffic Information pre-installation (With Live Traffic Information, your navigation system receives real-time traffic data and optimizes dynamic route guidance. Accurate and up-to-date information on traffic jams, stop-and-go traffic, and more helps you reduce travel times.)



- Package: Advanced Assistance (Mirror package: Electrically folding exterior mirrors, lowerable right exterior mirror, automatic dimming function Lane package: Active Lane Keeping Assist, Blind Spot Assist, Active Distance Assist DISTRONIC)
- Package: Advanced Park (Parking package with rear view camera Active Parking Assistant with PARKTRONIC)
- Package: Business (Advanced Parking Package: Active Parking Assistant PARKTRONIC with rearview camera; Advanced Infotainment Package: Media display with touch operation, smartphone integration - Apple CarPlay and Android Auto; Connectivity Package Navigation; Traffic Sign Assistant; Comfort Package: Seat heating for driver and front passenger; Seat Comfort Package - electric and manual adjustment options for the front seats; Fuel tank with larger capacity)
- Package: Comfort (Seat heating for driver and front passenger, electric and manual adjustment options for driver and front passenger seats, electro-pneumatic 4-way lumbar support and lateral support adjustment with control element on the seat, electric seat cushion tilt adjustment, electric height adjustment, electric backrest adjustment, mechanical seat cushion depth adjustment by 6 cm with leg rest pad, mechanical length adjustment, mechanical headrest adjustment)
- Radio accessories: Advanced Sound System (9 speakers and 225 watts of system power. The sound system also enhances your driving pleasure acoustically. The speaker system, precisely tuned to the interior, offers dynamic music playback.)
- Wheels: 48.3 cm (19") AMG light-alloy wheels in 5-twin-spoke design (painted high-gloss black with a high-sheen finish, 235/55 R19 on 8 J x 19 ET 38)
- Package: AMG Line Exterior (AMG styling, consisting of an AMG front apron with sporty air intakes and chrome trim, an AMG rear apron in a diffuser look with a black insert, a diamond grille with chrome pins, an integrated Mercedes star, and a matt iridium silver louvre with chrome inserts, 48.3 cm (19") AMG 5-twin-spoke alloy wheels, painted in tremolite grey with a high-sheen finish, 235/55 R19 tires on 8 J x 19 ET 38, a sports suspension with sports direct-steer system, and two visible tailpipe trims integrated into the bumper)
- Package: High-End Infotainment (Media display with touchscreen operation, Smartphone integration: Apple CarPlay and Android Auto, Navigation connectivity package, Traffic Sign Assistant: thanks to the intelligent linking of camera and map data, it can detect not only speed limits, overtaking bans and their cancellation, but also MBUX Augmented Reality for navigation, fully digital instrument display, and wireless charging system for mobile devices in the dashboard compartment)
- Package: Night for AMG Line Exterior (radiator grille with diamond grille with silver-colored pins and louvres in high-gloss black, 48.3 cm (19") AMG 5-spoke light-alloy wheels painted high-gloss black with a high-sheen finish with 235/55 R 19 on 8 J x 19 ET 38, roof rails in black, underbody protection painted black at the front and rear, exterior mirror housings painted high-gloss black, beltline trim strip and window surrounds in high-gloss black, heat-insulating, dark-tinted glass at the rear from the B-pillar)
- Paint finish: metallic

Brief expert findings

Documents submitted	At the time of the inspection, the registration certificate Part 2 (letter) was available, but the registration certificate Part 1 (certificate) was not. (Copy)
VIN comparison	The vehicle identification number (VIN) was read from the vehicle and its conformity with the submitted documents was verified during the inspection by the undersigned.
Inspection	The inspection conditions were sufficient for the assessment of the vehicle. Lifting equipment and a pit were available for examining the vehicle.
Test drive	No test drive/maneuvering was carried out during the inspection of the vehicle.
Engine function test	An engine test run was performed.

Value reducing factors

No.	Component group	Description
1	Side panel - rear left side	Side panel - Scratch(es) - Smart repair
2	Door - rear right side	Door - Scratch(es) - Smart repair
3	Side panel - rear right side	Side panel - dent(s) - Smart repair

Wear and tear



No.	Component group	Description
1	Wheel / tyres	Alloy rim - front right side - Scratch(es) - No deduction

The vehicle shows signs of wear commensurate with its age and use.

Previous damages

No.	Previous damage	Extent of damage (Net)
1	Rear, Provided by user / customer, from 31 Aug 2024	2.605,55 €

Order/Scope of order

The order was placed to prepare a sales report for the vehicle described. This includes the following:

- Description of core relevant information about the vehicle
- Documentation of equipment features
(Delivery by third-party service providers)
- Documentation of damage, defects, missing parts
- Documentation of previous damage, unrepaired previous damage, repainting
- a brief visual or functional inspection of the equipment details if possible.
(Functional tests of driver assistance systems are not included in the scope of services!)
- a photo documentation of the vehicle

Basis for the order

This product is based on the Alphabet Fuhrpark GmbH guidelines for vehicle returns and valuations. The expert makes the explicit findings in each individual case objectively within the framework of the specified standards based on his or her own expertise.

The vehicle inspection takes place in a disassembled state.

Damage or defects that can only be detected during disassembly/diagnosis work or through advanced knowledge remain within the scope of the prognosis risk. An extended risk exists for concealed defects caused by fraudulent deception and not identifiable by the expert.

Damage or defects resulting from normal use or wear and tear of the vehicle will be accepted according to the applicable standard.

There was no explicit identification or monetary consideration of the expected features within the product.

Features which in their nature and severity slightly exceed normal use but do not constitute unacceptable damage will be documented and identified under signs of use if necessary.

Damage or defects which, according to the underlying standard, can no longer be attributed to normal use or wear and tear are listed in the product under "Depreciating Factors".

Depending on the product specification, a monetary ID can be provided. If this takes place, the costs can be 100% d or pro rata depending on the vehicle's age and mileage.

Previous damages

According to available information previous damages were repaired at the vehicle. Traces of repairs, which allow conclusions about the area of repair, were not recognizable during the inspection.



Figure 1: Diagonal front (left)



Figure 2: Diagonal front (right)



Figure 3: Diagonal rear (left)



Figure 4: Diagonal rear (right)



Figure 5: Interior - front



Figure 6: Interior - rear



Figure 7: Instrument cluster



Figure 8: Instrument panel



Figure 9: interior 360° view



Figure 10: Cargo area



Figure 11: VIN



Figure 12: Mounted tyres



Figure 13: Documents

Mercedes-Benz			
Servicehistorie			
Mercedes-Benz	Autoservice Leipzig-Mitte GmbH Roscherstraße 17 - 23 Leipzig	Datum Laufleistung Service	04.08.2025 52494 km Service B
Mercedes-Benz	Autoservice Leipzig-Mitte GmbH Roscherstraße 17 - 23 Leipzig	Datum Laufleistung Service	12.08.2024 37155 km Service A
Mercedes-Benz	Autoservice Leipzig-Mitte GmbH Roscherstraße 17 - 23 Leipzig	Datum Laufleistung Service	21.08.2023 26908 km Service B
Mercedes-Benz	Autoservice Leipzig-Mitte GmbH Roscherstraße 17 - 23 Leipzig	Datum Laufleistung Service	11.07.2022 14298 km Service A

Figure 14: Documents



Figure 15: Documents



Figure 16: Documents



Figure 17: Additional tyres



Figure 18: Navigation



Figure 19: Misc.



Figure 20: Misc.



Figure 21: Misc.



Figure 22: Misc.



Figure 23: Misc.



Figure 24: Misc.



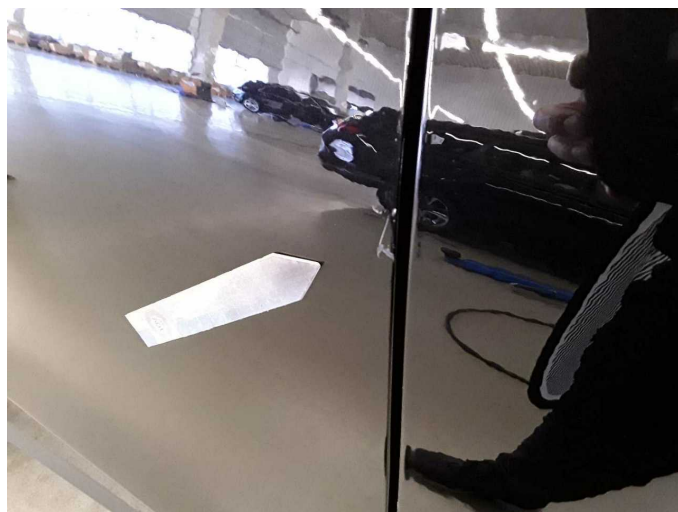
Damage 1: Side panel - rear left side: Side panel - Scratch(es) - Smart repair



Damage 1: Side panel - rear left side: Side panel - Scratch(es) - Smart repair



Damage 2: Door - rear right side: Door - Scratch(es) - Smart repair



Damage 2: Door - rear right side: Door - Scratch(es) - Smart repair



Damage 3: Side panel - rear right side: Side panel - dent(s) - Smart repair



Damage 3: Side panel - rear right side: Side panel - dent(s) - Smart repair



Wartungshistorie

(gemäß Auftraggeber Informationen)

Fahrgestellnummer: W1N2539151V304629

Hersteller / Modell: MERCEDES-BENZ MB GLC 220 d 4Matic 9G-TRONIC AMG Line

Datum	KM-Stand	Beschreibung
04.08.2025	52.494	Bremsscheiben vorne; Regelwartungsdienst
19.09.2024	38.709	Bremsscheiben hinten
13.09.2024	37.155	AU
19.08.2024	37.155	Regelwartungsdienst
18.08.2023	26.908	Regelwartungsdienst
11.07.2022	14.298	Regelwartungsdienst