



Expertise

Protocol number: 39478462
Order No. / Reference: 24678943
Inspection date: 23 Apr 2025

Manufacturer: Mercedes-Benz

Model: GLC 220 d 4Matic 9G-TRONIC

VIN: W1N2539151V233102



Vehicle details	
Manufacturer / Type / Model / Equipment	
Mercedes-Benz GLC 220 d 4Matic 9G-TRONIC	
Vehicle Identification number	W1N2539151V233102
Mileage (Read)	94,295 km
First registration	17 Dec 2019
Number of holders	1
Next periodical technical inspection	12/2026
(Report not on hand)	
Power / Engine displacement	143 kw / 1,950 ccm
Fuel type / Cylinder	Diesel / 4
Gearbox / Number of gears	Automatic / 9
Type of drive	All-wheel drive
Type of vehicle	SUV
Colour / colour code	POLARWEISS - UNILACK
Doors / Seats	5 / 5
Upholstery type	Cloth
Colour of upholstery	Black-Anthracite
Re/Import	no
driving readiness	Roadworthy



Vehicle details

Maintenance booklet / proof	Non-existent	Next maintenance in	240 Tag(e)
Key is / should be	2 / 2	FZG documents	ZB#2 (B) was available (copy), ZB#1 (S) was not available
		Letter No.	FN230034
Previous damage / Accident	None detectable	Repainting	None detectable
Inspection conditions	Sufficient	Lifting equipment / pit	yes
Test drive	Not performed	Engine function test	Performed
driving readiness	Roadworthy		
Manufacturer key number/ type code number	2222 / AKG 00002		
Emission standard	EURO6;WLTP;AM;PI/CI; M, N1 I	Fine dust sticker	
Permitted total weight	2,500 kg	Empty weight	

Tyres

Mounted tyres

#	Tyre size	Type of tyre	Manufacturer	Tread depth
1)	235/65 R17 103H	Winter tyres on Light alloy	Dunlop	4mm / 4mm
2)	235/65 R17 103H	Winter tyres on Light alloy	Dunlop	5mm / 5mm

Additional tyres

#	Tyre size	Type of tyre	Manufacturer	Tread depth
1)	235/60 R18 103V	Summer tyres on Light alloy	Continental	4mm / 4mm
2)	235/60 R18 103V	Summer tyres on Light alloy	Continental	5mm / 5mm

Replacement

Typ	Tyre size	Type of tyre	Manufacturer	Tread depth
	Tirefit	Expiration date 06/2029		

Legend: Tread depth information for tires on the left is in the first place, for tires on the right is in the second place on the axle in the direction of travel



Equipment

Standard equipment

- Airbag for driver and front passenger
- Airbag: Sidebag for driver and front passenger
- Active Brake Assist
- Anti-lock braking system (ABS)
- Automatic passenger airbag deactivation
- On-board computer
- Roof rails in polished aluminum
- tachometer
- DYNAMIC SELECT
- Electronic Stability Program (ESP)
- Chassis: AGILITY CONTROL chassis
- Electric parking brake
- Rear window heated
- Interior headliner fabric crystal grey
- Climate: THERMATIC automatic climate control with 2 climate zones
- Communication module (LTE) for the use of Mercedes me connect services
- Paint finish: Uni
- Steering wheel: Multifunctional sports steering wheel in 3-spoke design in black leather
- Mercedes-Benz emergency call system
- Package: Chrome
- Upholstery: fabric Aberdeen black
- Radio accessories: Touchpad
- Wheels: 43.2 cm (17") alloy wheels 4-way in 10-spoke design
- Seats: Folding rear seat backrests
- Seats: Front seats electrically adjustable
- Pre-installation for vehicle monitoring
- High-visibility vest for drivers
- Central locking
- Airbag: Kneebag for driver
- Airbag: Windowbags
- 4MATIC all-wheel drive
- ATTENTION ASSIST
- Exterior mirrors left and right heated, electrically adjustable from the inside
- diesel particulate filter
- Third brake light in LED technology
- EASY-Pack load compartment cover (removable)
- Driving light assistant
- 4-way electric window lifter
- Transmission: 9G-TRONIC
- Rear window wiper
- KEYLESS-GO start function
- Remote trunk lid release
- Instrument cluster with 2 tube-shaped round instruments, 13.97 cm (5.5") multifunction display
- 5-way headrests
- LED high-performance headlights
- Steering column mechanically adjustable in height and length
- Navigation accessories: Advanced functions MBUX
- Package: Interior light
- Radio: MBUX multimedia system
- Tire pressure monitoring (TPMS)
- Windscreen wipers with rain sensor
- Power steering
- Seats: I-Size child restraint system on the outer rear seats
- Cruise control
- Pre-installation for vehicle setup
- Immobiliser
- Decorative elements: piano lacquer look black

Extra equipment

- Airbag: Sidebags in the rear left and right
- Chassis: AGILITY CONTROL chassis in conjunction with AMG Line Exterior or OFF-ROAD Exterior (with selective damping system)
- Navigation accessories: Preparation for Live Traffic Information (With Live Traffic Information, your navigation system receives traffic data in real time and optimizes dynamic route guidance. Thanks to precise and up-to-date information on traffic jams, stop-and-go traffic and more, you are supported in reducing travel times.)
- Trailer hitch with ESP trailer stabilization (fully electrically foldable and extendable)
- Fire extinguisher (mounted at the front of the driver's seat)
- Velour floor mats in interior color
- Package: Advanced Infotainment (media display with touch operation, smartphone integration: Apple CarPlay and Android Auto connectivity package, navigation)
- Package: Advanced Light (LED High Performance headlights and adaptive rear lights in LED technology Adaptive High Beam Assistant)
- Package: High End Park (Parking package with 360° camera Active Parking Assistant with PARKTRONIC)



- Package: Business (Parking package: Active parking assistant with PARKTRONIC Advanced Infotainment package: Media display with touch operation, smartphone integration-Apple CarPlay and Android Auto, connectivity package navigation Comfort package: Seat heating for driver and front passenger, seat comfort package-electric and manual adjustment options for the front seats Fuel tank with larger capacity (not for 300 e))
- Package: Mirrors (Electrically folding exterior mirrors, lowerable right exterior mirrors with automatic dimming function)
- Wheels: 45.7 cm (18") light alloy wheels 4-way in 5-double-spoke design (painted matt Himalayan grey and high-sheen with 235/60 R18 with 8 J x 18 ET 38)
- TIREFIT with tire inflation compressor
- Partition net for luggage compartment separation (and passenger protection)
- Heat-insulating dark tinted glass all around from B-pillar
- Package: Comfort (Seat heating for driver and front passenger, electric and manual adjustment options for driver and front passenger seats, electro-pneumatic 4-way lumbar support and lateral support adjustment with control element on the seat, electric seat cushion inclination adjustment, electric height adjustment, electric backrest adjustment, mechanical seat cushion depth adjustment by 6 cm with leg rest pad, mechanical length adjustment, mechanical headrest adjustment)
- Telephone: Multifunctional telephony (wireless connection of mobile phone with external antenna - wireless charging for compatible mobile phones - Bluetooth and WLAN pairing wirelessly via NFC (Near Field Communication) technology)
- Elimination of type marking on the trunk lid

Brief expert findings

Documents submitted	At the time of the inspection, the registration certificate part 2 (letter) was available, but the registration certificate part 1 (certificate) was not available. (Copy)
VIN comparison	The vehicle identification number (VIN) was read and the undersigned verified that it matched the documents submitted during the inspection.
Inspection	The inspection conditions were sufficient to assess the vehicle. The inspection was carried out using the lighting conditions provided by the photo system included in the report. Lifting equipment and a pit were available for examining the vehicle.
Test drive	No test drive/maneuvering was carried out during the inspection of the vehicle.
Engine function test	An engine test run was performed.
driving readiness	At the time of the inspection, the vehicle was capable of driving and moving under its own power.

Value reducing factors

No.	Component group	Description
1	Misc.	Main inspection - No evidence - No deduction
2	Trim / covers	Brightware / decorative strip - Damaged - Replace
3	Side panel - rear left side	Side panel - dent(s) - Smooth repair work
4	Door - rear right side	Door - Scratched - Smart repair
5	Interior	Interior - Soiled - Clean
6	Front bumper	Front bumper (Steinschlag) - Scratched - Paint
7	Vehicle glazing	Windscreen (Rissbildung) - Stone chips - Replace

Wear and tear

No.	Component group	Description
1	Headlight	Headlight - right side - Stone chips - No deduction
2	Headlight	Headlight - left side - Stone chips - No deduction
3	Bonnet	Bonnet - Stone chips - No deduction
4	Rear bumper	Rear bumper - Scratched - No deduction
5	Steering system	Steering wheel - Worn - No deduction

The vehicle shows signs of wear commensurate with its age and use.



Missing parts

Description

Documents - Log book

Order/Scope of order

The order was placed to prepare a sales report for the vehicle described. This includes the following:

- Description of core relevant information about the vehicle
- Documentation of equipment features
(*Delivery by third-party service providers*)
- Documentation of damage, defects, missing parts
- Documentation of previous damage, unrepaired previous damage, repainting
- a brief visual or functional inspection of the equipment details if possible.
(*Functional tests of driver assistance systems are not included in the scope of services!*)
- a photo documentation of the vehicle

Basis for the order

This product is based on the Alphabet Fuhrpark GmbH guidelines for vehicle returns and valuations. The expert makes the explicit findings in each individual case objectively within the framework of the specified standards based on his or her own expertise.

The vehicle inspection takes place in a disassembled state.

Damage or defects that can only be detected during disassembly/diagnosis work or through advanced knowledge remain within the scope of the prognosis risk. An extended risk exists for concealed defects caused by fraudulent deception and not identifiable by the expert.

Damage or defects resulting from normal use or wear and tear of the vehicle will be accepted according to the applicable standard.

There was no explicit identification or monetary consideration of the expected features within the product.

Features which in their nature and severity slightly exceed normal use but do not constitute unacceptable damage will be documented and identified under signs of use if necessary.

Damage or defects which, according to the underlying standard, can no longer be attributed to normal use or wear and tear are listed in the product under "Depreciating Factors".

Depending on the product specification, a monetary ID can be provided. If this takes place, the costs can be 100% d or pro rata depending on the vehicle's age and mileage.

Previous damages

Neither repaired nor non-repaired previous damage to the vehicle could be determined.

Comments

- Für den montierten Radsatz wurde kein Nachweiß erbracht.
- Winterradsatz ist kein Bestandteil des Auslieferungsumfangs.



Figure 1: Diagonal front (left)



Figure 2: Diagonal front (right)



Figure 3: Diagonal rear (left)



Figure 4: Diagonal rear (right)



Figure 5: Interior - front



Figure 6: Interior - rear



Figure 7: Instrument cluster



Figure 8: Instrument panel



Figure 9: interior 360° view ([Online Link](#))



Figure 10: Cargo area



Figure 11: VIN



Figure 12: Mounted tyres



Figure 13: Documents



Figure 14: Additional tyres



Figure 15: Navigation



Figure 16: Misc.



Figure 17: Misc.

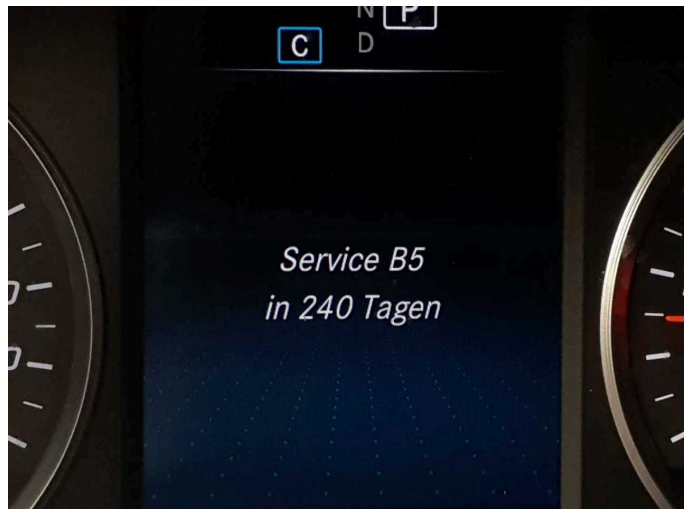


Figure 18: Misc.



Figure 19: Misc.



Figure 20: Misc.



Figure 21: Misc.



Figure 22: Misc.

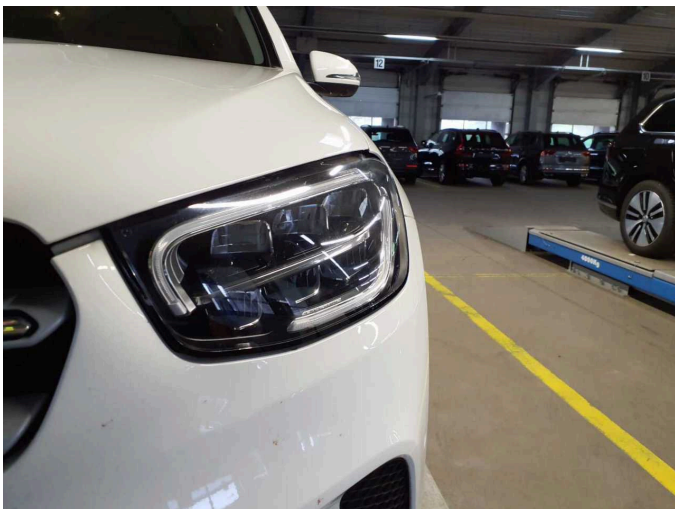


Figure 23: Misc.



Figure 24: Misc.

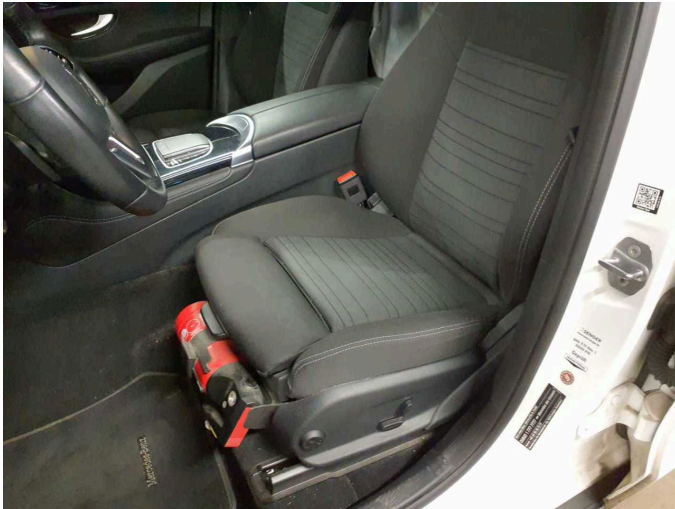


Figure 25: Misc.



Figure 26: Misc.

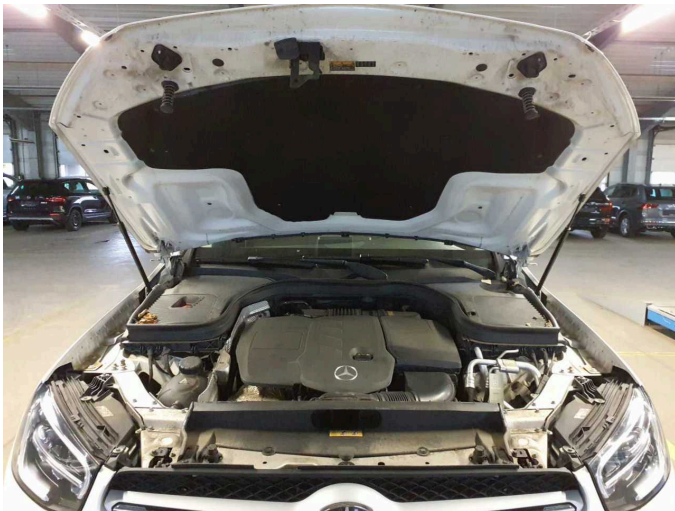


Figure 27: Misc.

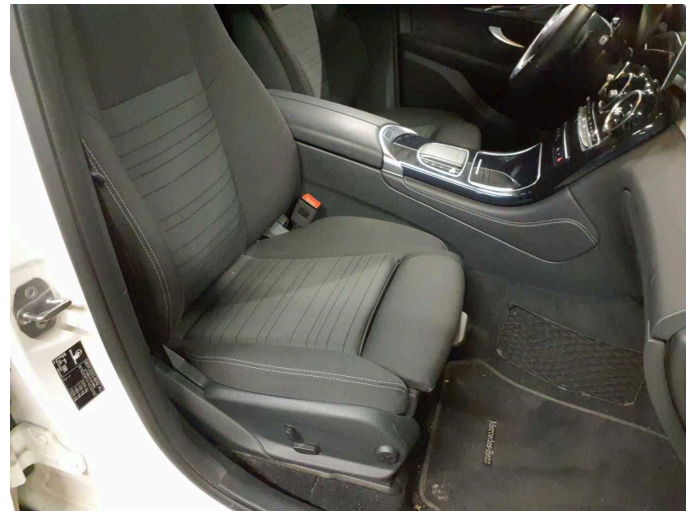


Figure 28: Misc.

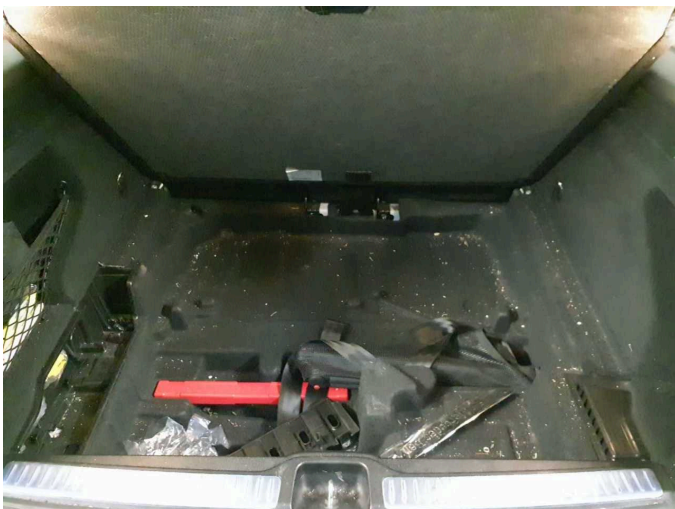


Figure 29: Misc.

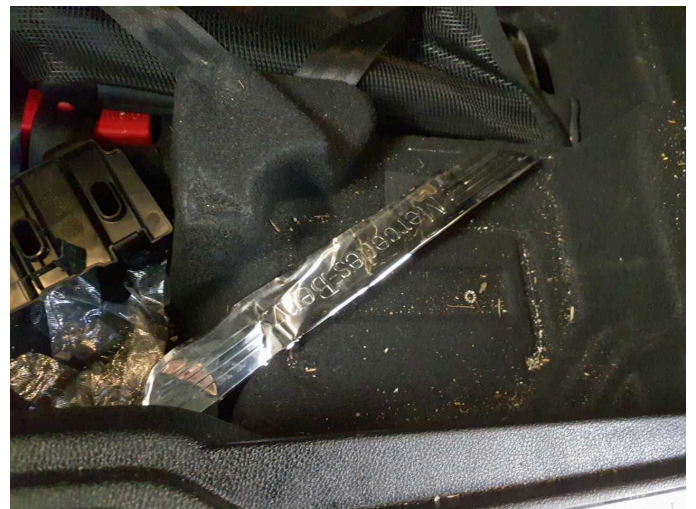


Figure 30: Misc.

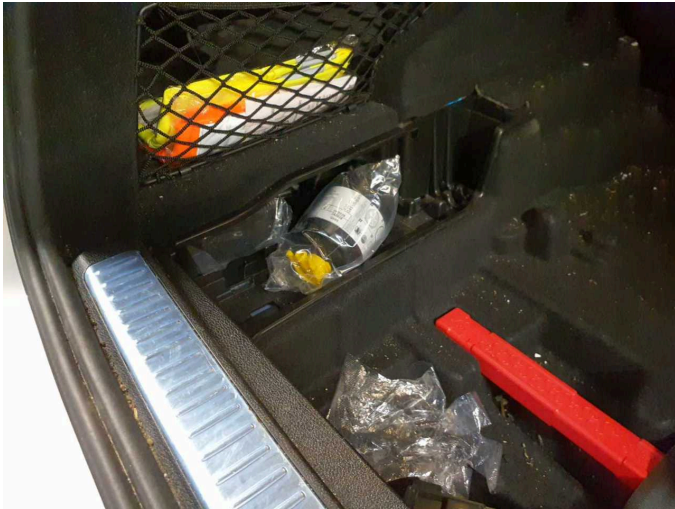


Figure 31: Misc.

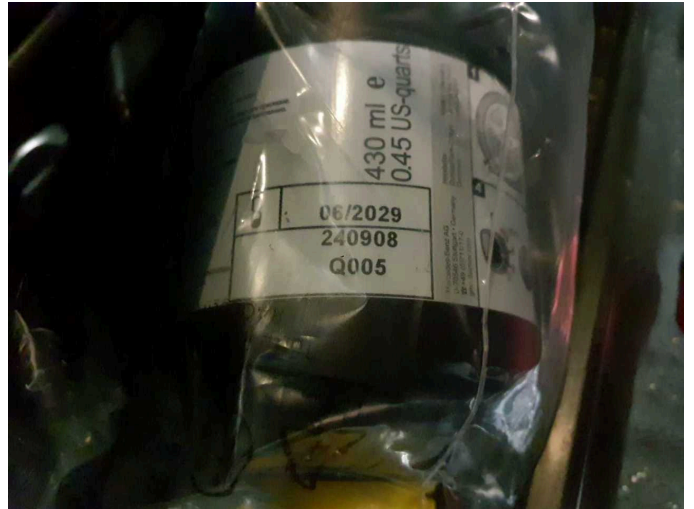


Figure 32: Misc.

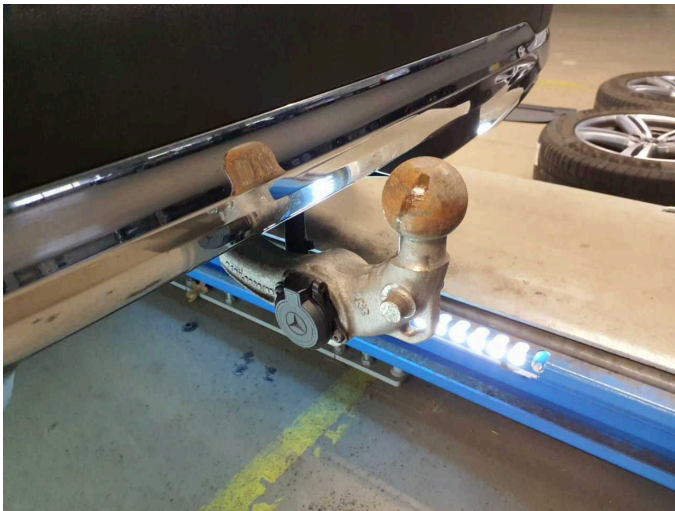


Figure 33: Misc.



Figure 34: Misc.



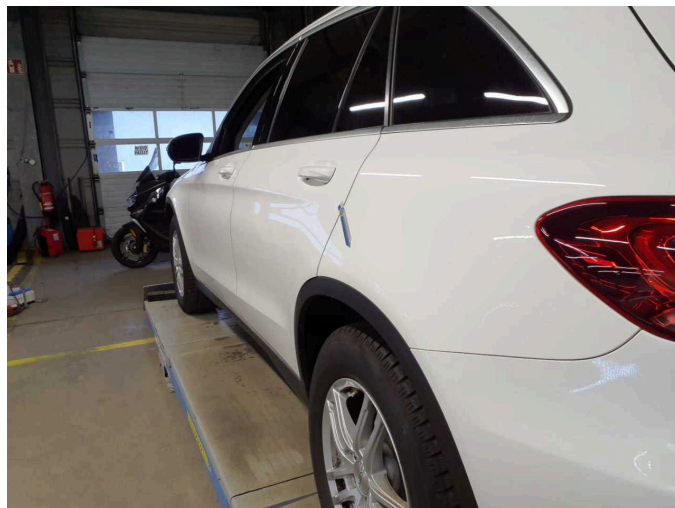
Figure 35: Misc.



Damage 2: Trim / covers: Brightware / decorative strip - Damaged - Replace



Damage 2: Trim / covers: Brightware / decorative strip - Damaged - Replace



Damage 3: Side panel - rear left side: Side panel - dent(s) - Smooth repair work



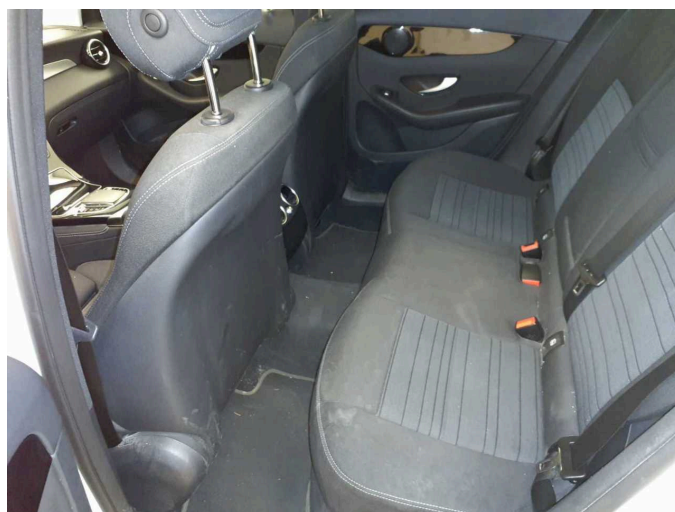
Damage 3: Side panel - rear left side: Side panel - dent(s) - Smooth repair work



Damage 4: Door - rear right side: Door - Scratched - Smart repair



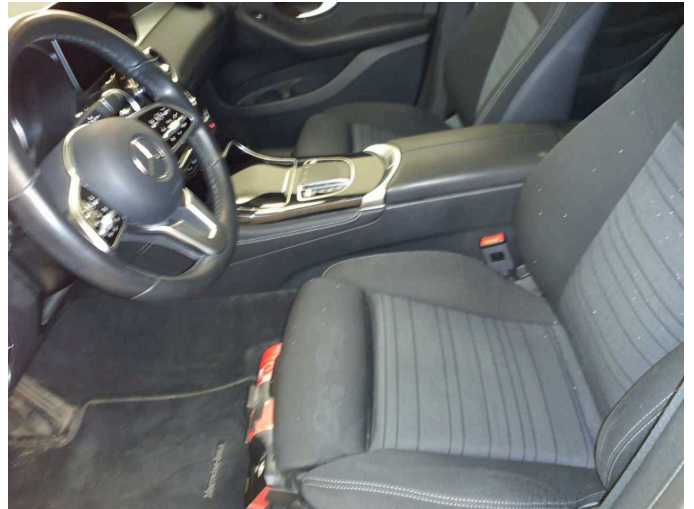
Damage 4: Door - rear right side: Door - Scratched - Smart repair



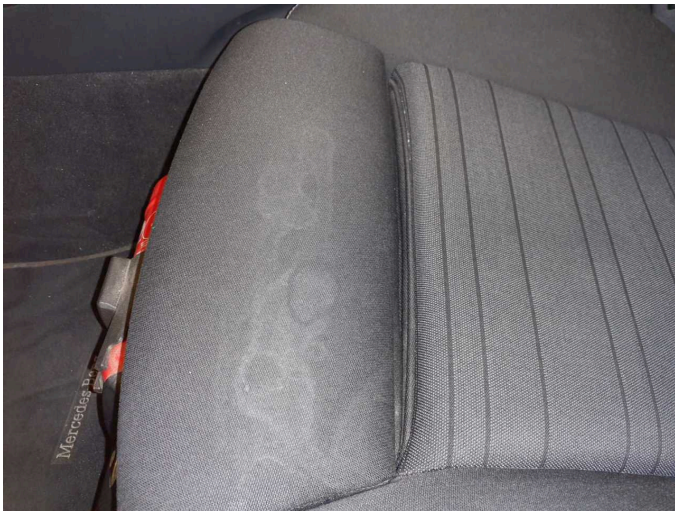
Damage 5: Interior: Interior - Soiled - Clean



Damage 5: Interior: Interior - Soiled - Clean



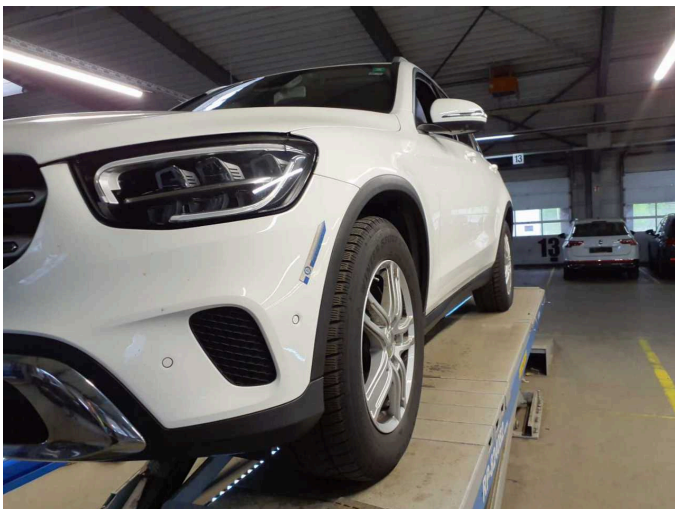
Damage 5: Interior: Interior - Soiled - Clean



Damage 5: Interior: Interior - Soiled - Clean



Damage 5: Interior: Interior - Soiled - Clean



Damage 6: Front bumper: Front bumper (Steinschlag) - Scratched - Paint



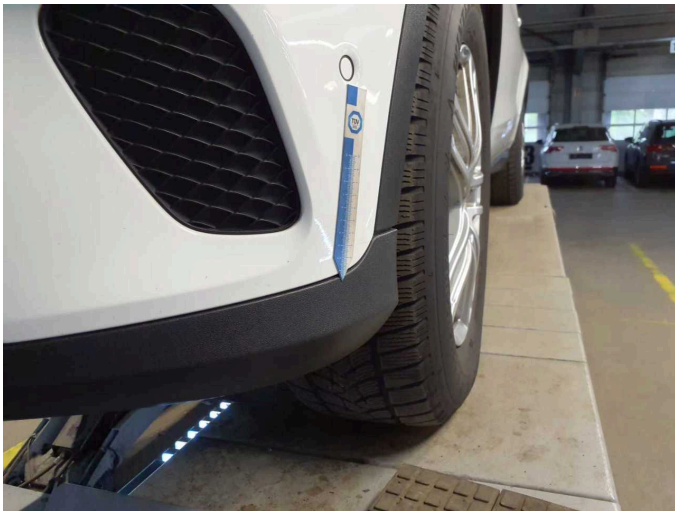
Damage 6: Front bumper: Front bumper (Steinschlag) - Scratched - Paint



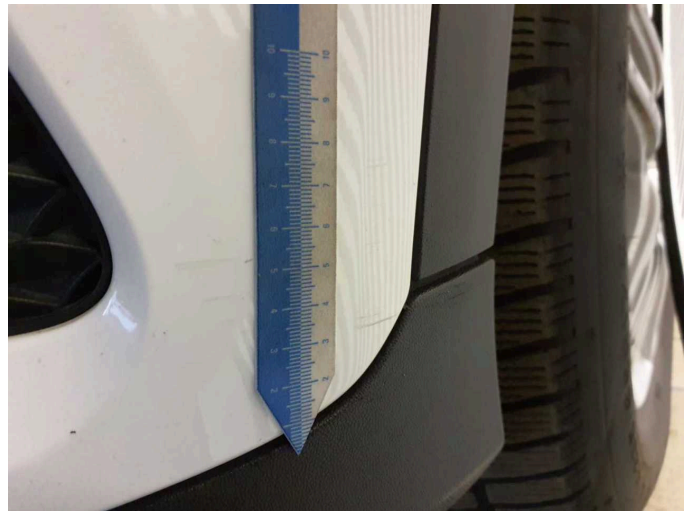
Damage 6: Front bumper: Front bumper (Steinschlag) - Scratched - Paint



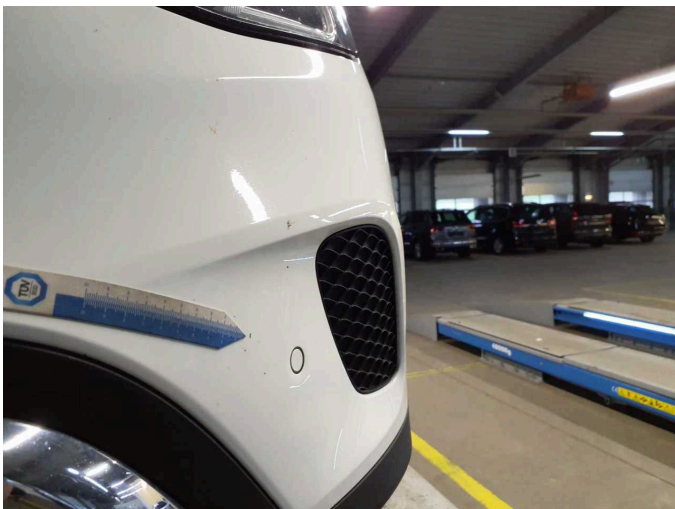
Damage 6: Front bumper: Front bumper (Steinschlag) - Scratched - Paint



Damage 6: Front bumper: Front bumper (Steinschlag) - Scratched - Paint



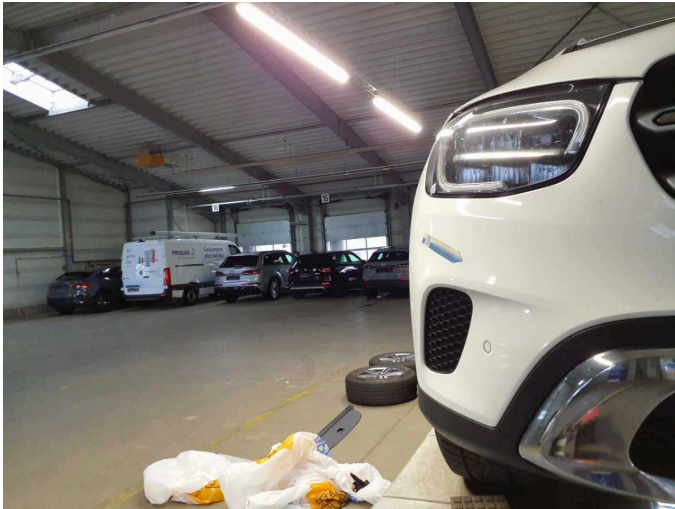
Damage 6: Front bumper: Front bumper (Steinschlag) - Scratched - Paint



Damage 6: Front bumper: Front bumper (Steinschlag) - Scratched - Paint



Damage 6: Front bumper: Front bumper (Steinschlag) - Scratched - Paint



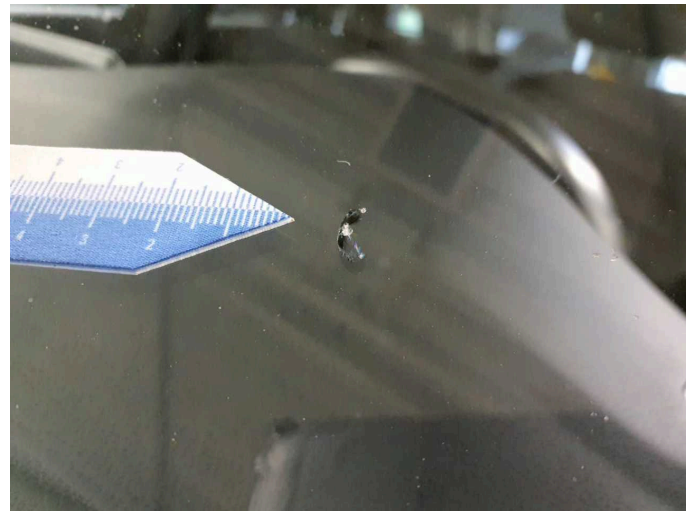
Damage 6: Front bumper: Front bumper (Steinschlag) - Scratched - Paint



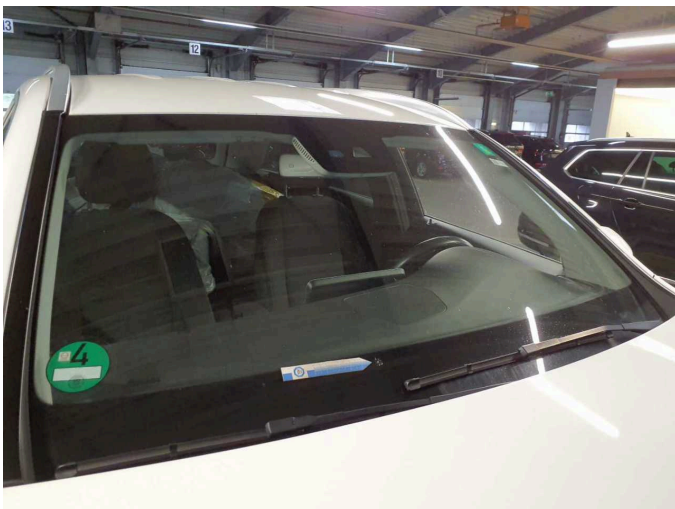
Damage 6: Front bumper: Front bumper (Steinschlag) - Scratched - Paint



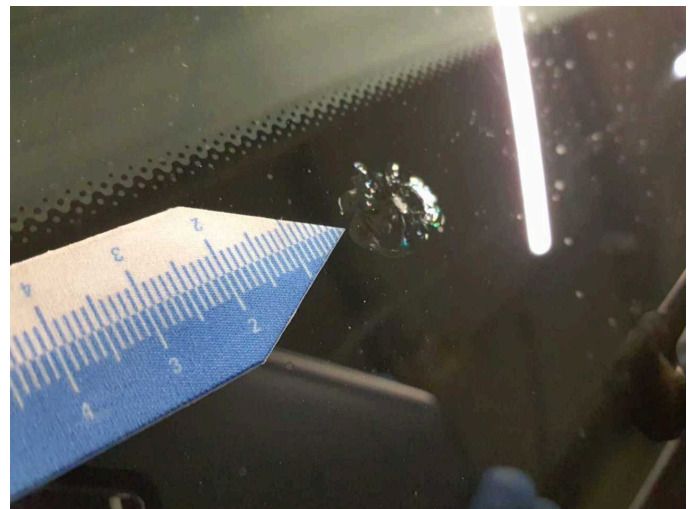
Damage 7: Vehicle glazing: Windscreen (Rissbildung) - Stone chips - Replace



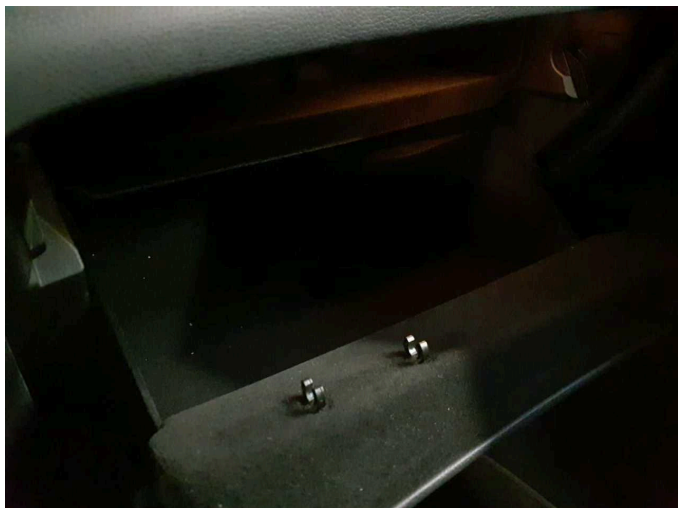
Damage 7: Vehicle glazing: Windscreen (Rissbildung) - Stone chips - Replace



Damage 7: Vehicle glazing: Windscreen (Rissbildung) - Stone chips - Replace



Damage 7: Vehicle glazing: Windscreen (Rissbildung) - Stone chips - Replace



Missing part 1: Documents: Log book - Missing - Replace