



Expertise

Protocol number: 41384423
Order No. / Reference: 25144682
Inspection date: 3 Sept 2025

Manufacturer: Mercedes-Benz

Model: GLC 220 d 4Matic 9G-TRONIC AMG Line

VIN: W1N2539151F982125



Vehicle details	
Manufacturer / Type / Model / Equipment	
Mercedes-Benz GLC 220 d 4Matic 9G-TRONIC AMG Line	
Vehicle Identification number	W1N2539151F982125
Mileage (Read)	198,936 km
First registration	10 Aug 2021
Number of holders	1
Next periodical technical inspection	08/2026
(Report not on hand)	
Power / Engine displacement	143 kw / 1,950 ccm
Fuel type / Cylinder	Diesel / 4
Gearbox / Number of gears	Automatic / 9
Type of drive	All-wheel drive
Type of vehicle	SUV
Colour / colour code	Selenitgrau Metallic
Doors / Seats	5 / 5
Upholstery type	Leather
Colour of upholstery	White-Black



Vehicle details

Maintenance booklet / proof	digital proof / complete	Next maintenance in	700 km
Last maintenance on / at	02/2025 at 168,635 km		
Key is / should be	2 / 2	FZG documents	ZB#2 (B) was available (copy), ZB#1 (S) was not available
		Letter No.	GC628941
Previous damage / Accident	Detectable	Repainting	None detectable
Inspection conditions	conditional: light/moisture/dirt	Lifting equipment / pit	yes
Test drive	Not performed	Engine function test	Performed
Manufacturer key number/ type code number	2222 / AKG 00199		
Emission standard	EURO6;WLTP;AP;PI/CI; M, N1 I	Fine dust sticker	
Permitted total weight	2,500 kg	Empty weight	

Tyres

Mounted tyres

#	Tyre size	Type of tyre	Manufacturer	Tread depth
1)	235/55 R19 101V	Summer tyres on Light alloy	Pirelli	6mm / 6mm
2)	235/55 R19 101V	Summer tyres on Light alloy	Pirelli	6mm / 6mm

Additional tyres

#	Tyre size	Type of tyre	Manufacturer	Tread depth
1)	235/60 R18 103H	Winter tyres on Light alloy	Bridgestone	4mm / 4mm
2)	235/60 R18 103H	Winter tyres on Light alloy	Bridgestone	5mm / 5mm

Legend: Tread depth information for tires on the left is in the first place, for tires on the right is in the second place on the axle in the direction of travel



Equipment

Equipment

- Klimaanlage

Standard equipment

- | | |
|--|---|
| <ul style="list-style-type: none"> • Airbag for driver and front passenger • Airbag: Sidebag for driver and front passenger • Active Brake Assist • Anti-lock braking system (ABS) • Automatic passenger airbag deactivation • On-board computer • Roof rails in polished aluminum • tachometer • DYNAMIC SELECT • Electronic Stability Program (ESP) • 4-way electric window lifter • Floor mats in black with AMG lettering • Rear window heated • Interior headliner fabric black • Remote trunk lid release • Communication module (LTE) for the use of Mercedes me connect services • LED high-performance headlights • Steering column mechanically adjustable in height and length • Mercedes-Benz emergency call system • Package: Storage • Package: OFF-ROAD Exterior • Radio: MBUX multimedia system • Radio accessories: Digital radio • Tire pressure monitoring (TPMS) • Windscreen wipers with rain sensor • Seat: Front sports seats • Seats: I-Size child restraint system on the outer rear seats • Cruise control • Immobiliser • Decorative elements: piano lacquer look black/aluminium with light longitudinal grain | <ul style="list-style-type: none"> • Airbag: Kneebag for driver • Airbag: Windowbags • 4MATIC all-wheel drive • ATTENTION ASSIST • Exterior mirrors left and right heated, electrically adjustable from the inside • diesel particulate filter • Third brake light in LED technology • EASY-Pack load compartment cover (removable) • Driving light assistant • Electric parking brake • Transmission: 9G-TRONIC • Rear window wiper • KEYLESS-GO start function • Instrument cluster with 2 tube-shaped round instruments, 13.97 cm (5.5") multifunction display • 5-way headrests • Steering wheel: 3-spoke multifunction sports steering wheel in black nappa leather • Steering: Sport Direct-Steer • Navigation accessories: Advanced functions MBUX • Package: Interior light • Upholstery: ARTICO man-made leather/DINAMICA microfiber • Radio accessories: Touchpad • Remote Services Plus • Power steering • Seats: Folding rear seat backrests • Seats: Front seats electrically adjustable • High-visibility vest for drivers • Central locking |
|--|---|

Extra equipment

- | | |
|--|--|
| <ul style="list-style-type: none"> • Ambient lighting (Design the interior according to your personal preferences or current mood. With a total of 64 colors, the ambient lighting offers almost unlimited lighting possibilities and has the right color for every situation. Illuminated door sills on the driver and passenger sides.) • Chassis: AGILITY CONTROL chassis (with selective damping system) | <ul style="list-style-type: none"> • Auxiliary heater accessories: Remote control for auxiliary heater • Auxiliary heating including auxiliary ventilation in summer |
|--|--|



- Climate: THERMOTRONIC automatic climate control with 3 climate zones (The THERMOTRONIC automatic climate control with 3 climate zones and 3 climate styles enables an individualized comfort climate on board. The driver and front passenger can adjust the temperature, air distribution, and climate style according to their personal needs. The third climate zone is located in the rear, with separately adjustable temperature and air flow.)
- Elimination of type marking on the trunk lid
- Head-up display
- Package: Advanced Infotainment (Media display with touchscreen operation, Smartphone integration: Apple CarPlay and Android Auto, Connectivity package, Navigation, Traffic Sign Assistant: Thanks to the intelligent combination of camera and map data, it can not only detect speed limits, overtaking bans, and their cancellation, but also display no-entry zones and warn you of wrong-way entry.)
- Package: Advanced Park (Parking package with rear view camera Active Parking Assist with PARKTRONIC)
- Package: Business (Advanced Parking Package: Active Parking Assistant PARKTRONIC with rearview camera; Advanced Infotainment Package: Media display with touch operation, smartphone integration - Apple CarPlay and Android Auto; Connectivity Package Navigation; Traffic Sign Assistant; Comfort Package: Seat heating for driver and front passenger; Seat Comfort Package - electric and manual adjustment options for the front seats; Fuel tank with larger capacity)
- Package: High-End Assistance (Mirror package: Electrically folding exterior mirrors, lowerable right exterior mirror, automatic dimming function. Driving Assistance package: Active Distance Assist DISTRONIC, Active Steering Assist, Active Brake Assist, Evasive Steering Assist, Active Lane Keeping Assist, Active Blind Spot Assist, PRE-SAFE PLUS)
- Package: Night for AMG Line Exterior (radiator grille with diamond grille with silver-colored pins and louvres in high-gloss black, 48.3 cm (19") AMG 5-spoke light-alloy wheels painted high-gloss black with a high-sheen finish with 235/55 R 19 on 8 J x 19 ET 38, roof rails in black, underbody protection painted black at the front and rear, exterior mirror housings painted high-gloss black, beltline trim strip and window surrounds in high-gloss black, heat-insulating, dark-tinted glass at the rear from the B-pillar)
- Paint finish: metallic
- Trim elements: AMG carbon/aluminium with light longitudinal grain
- Designo interiors two-tone platinum white pearl/black (seats designo nappa leather, seat backrest/cushions in platinum white pearl with diamond-shaped perforation, seat bolsters/headrest in black with white contrasting topstitching, instrument panel upper section and beltlines in ARTICO man-made leather in black with contrasting topstitching in crystal grey, 3-spoke multifunction sports steering wheel in black nappa leather, trim elements in black open-pore ash wood/light longitudinal-grain aluminum, designo velour floor mats in black, roof liner in black fabric)
- Navigation accessories: Live Traffic Information pre-installation (With Live Traffic Information, your navigation system receives real-time traffic data and optimizes dynamic route guidance. Accurate and up-to-date information on traffic jams, stop-and-go traffic, and more helps you reduce travel times.)
- Package: Advanced Comfort (Seat heating for driver and front passenger, driver's seat electrically adjustable with memory function, front seat right electrically adjustable with memory function)
- Package: AMG Line Exterior (AMG styling, consisting of an AMG front apron with sporty air intakes and chrome trim, an AMG rear apron in a diffuser look with a black insert, a diamond grille with chrome pins, an integrated Mercedes star, and a matt iridium silver louvre with chrome inserts, 48.3 cm (19") AMG 5-twin-spoke alloy wheels, painted in tremolite grey with a high-sheen finish, 235/55 R19 tires on 8 J x 19 ET 38, a sports suspension with sports direct-steer system, and two visible tailpipe trims integrated into the bumper)
- Package: KEYLESS-GO Convenience (vehicle key with KEYLESS-GO functionality - KEYLESS-GO access and drive authorization system - start/stop button - convenient opening and closing - door handles with chrome inserts - HANDS-FREE ACCESS - handle recess illumination - remote trunk lid closing - EASY-PACK luggage compartment lid)
- Panoramic sunroof
- Partition net for luggage compartment separation (and occupant protection)
- Steering wheel: heated steering wheel
- Trailer hitch with ESP trailer stabilization (fully electrically foldable and extendable)
- URBAN GUARD Vehicle Protection (The URBAN GUARD Vehicle Protection package offers all-round monitoring. It includes an anti-burglary and anti-theft alarm system and a tow-away protection system that can detect changes in position. Movements in the interior also trigger visual and audible warnings. The Mercedes me anti-theft and parking collision detection system informs you via the app.)
- Wheels: 48.3 cm (19") AMG light-alloy wheels in 5-twin-spoke design (painted high-gloss black with a high-sheen finish, 235/55 R19 on 8 J x 19 ET 38)



Brief expert findings

Documents submitted	At the time of the inspection, the registration certificate Part 2 (letter) was available, but the registration certificate Part 1 (certificate) was not. (Copy)
VIN comparison	The vehicle identification number (VIN) was read from the vehicle and its conformity with the submitted documents was verified during the inspection by the undersigned.
Inspection	A proper visual inspection of the paintwork and bodywork was only possible to a limited extent due to insufficient lighting conditions/wetness or dirt. Lifting equipment and a pit were available for examining the vehicle.
Test drive	No test drive/maneuvering was carried out during the inspection of the vehicle.
Engine function test	An engine test run was performed.

Value reducing factors

No.	Component group	Description
1	Mudguard - right side	Inner mudguard - Broken / torn - Replace
2	Side panel - rear right side	Wheel well extension (geklebt) - Loose - Replace
3	Trim / covers	Door trim - front left side - Scratched - Smart repair
4	Body	B-pillar - left side - Scratched - Smart repair
5	Side panel - rear left side	Sill - Scratched - Smart repair
6	Door - rear left side	Door - Scratched - Smart repair
7	Headlight	Headlight - right side - Scratched - Measure
8	Wheel / tyres	Alloy rim - front right side (Materialabtrag) - Scratched - Loss in value
9	Front bumper	Front bumper - Stone chips - Paint
10	Boot lid / rear door	Boot lid - Dent / paintcoat damage - Repair and paint
11	Bonnet	Bonnet - Stone chips - Paint

Wear and tear

No.	Component group	Description
1	Vehicle glazing	Windscreen - Stone chips - No deduction
2	Wheel / tyres	Alloy rim - front left side - Scratched - No deduction
3	Door - front left side	Door - Stone chips - No deduction
4	Seat - front	Backrest cover - left side - Abrasion - No deduction
5	Steering system	Steering wheel - Abrasion - No deduction
6	Rear bumper	Rear bumper - Scratched - No deduction
7	Wheel / tyres	Alloy rim - rear right side - Scratched - No deduction
8	Trim / covers	Boot lid - interior trim - Scratched - No deduction
9	2nd wheel set	1 alloy rim - Scratched - No deduction

The vehicle shows signs of wear commensurate with its age and use.

Missing parts

Description

Equipment - Tirefit complete

Previous damages

No.	Previous damage	Extent of damage (Net)
1	Rear, Provided by user / customer, from 28 Nov 2024	1.350,39 €



Paint coat thickness measurement

Roof	95 µm	Roof rail - left side	95 µm
Roof rail - right side	85 µm	Boot lid / rear door	95 µm
Mudguard - left side	95 µm	Mudguard - right side	95 µm
Bonnet	100 µm	Side panel - rear left side	105 µm
Side panel - rear right side	100 µm	Bumper rear	100 µm
Door - rear left side	100 µm	Door - rear right side	95 µm
Door - front left side	100 µm	Door - front right side	100 µm

Order/Scope of order

The order was placed to prepare a sales report for the vehicle described. This includes the following:

- Description of core relevant information about the vehicle
- Documentation of equipment features
(*Delivery by third-party service providers*)
- Documentation of damage, defects, missing parts
- Documentation of previous damage, unrepaired previous damage, repainting
- a brief visual or functional inspection of the equipment details if possible.
(*Functional tests of driver assistance systems are not included in the scope of services!*)
- a photo documentation of the vehicle

Basis for the order

This product is based on the Alphabet Fuhrpark GmbH guidelines for vehicle returns and valuations. The expert makes the explicit findings in each individual case objectively within the framework of the specified standards based on his or her own expertise.

The vehicle inspection takes place in a disassembled state.

Damage or defects that can only be detected during disassembly/diagnosis work or through advanced knowledge remain within the scope of the prognosis risk. An extended risk exists for concealed defects caused by fraudulent deception and not identifiable by the expert.

Damage or defects resulting from normal use or wear and tear of the vehicle will be accepted according to the applicable standard.

There was no explicit identification or monetary consideration of the expected features within the product.

Features which in their nature and severity slightly exceed normal use but do not constitute unacceptable damage will be documented and identified under signs of use if necessary.

Damage or defects which, according to the underlying standard, can no longer be attributed to normal use or wear and tear are listed in the product under "Depreciating Factors".

Depending on the product specification, a monetary ID can be provided. If this takes place, the costs can be 100% d or pro rata depending on the vehicle's age and mileage.

Previous damages

According to available information previous damages were repaired at the vehicle. Traces of repairs, which allow conclusions about the area of repair, were not recognizable during the inspection.



Figure 1: Diagonal front (left)



Figure 2: Diagonal front (right)



Figure 3: Diagonal rear (left)



Figure 4: Diagonal rear (right)



Figure 5: Interior - front



Figure 6: Interior - rear



Figure 7: Instrument cluster



Figure 8: Instrument panel



Figure 9: interior 360° view



Figure 10: Cargo area

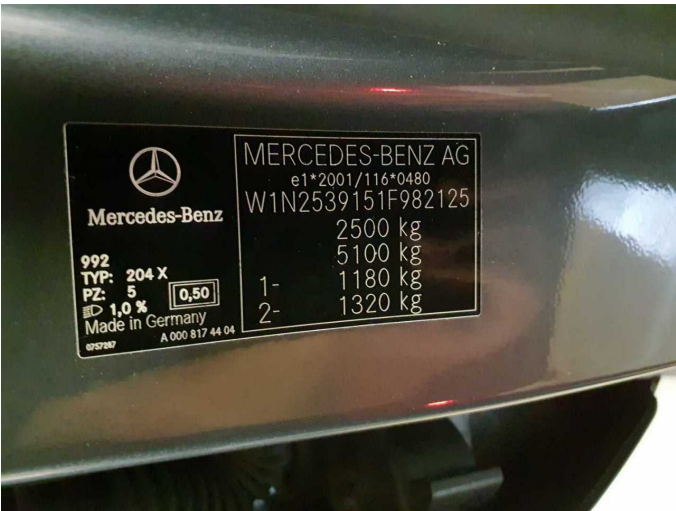


Figure 11: VIN



Figure 12: Mounted tyres



Figure 13: Documents



Figure 14: Additional tyres



Figure 15: Navigation

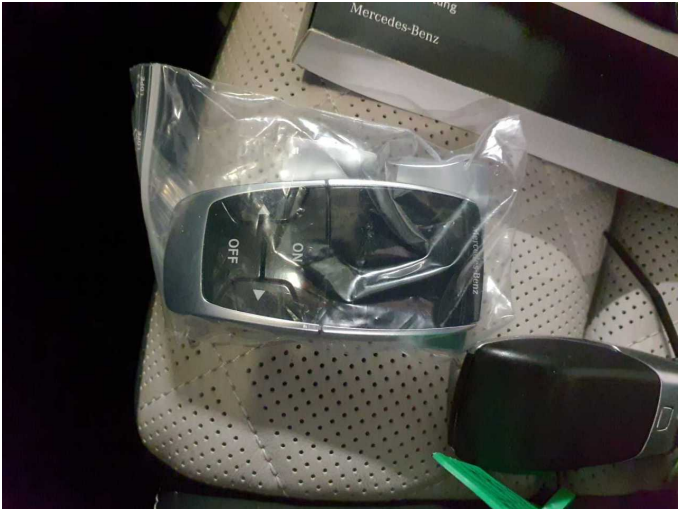


Figure 16: Misc.



Figure 17: Misc.

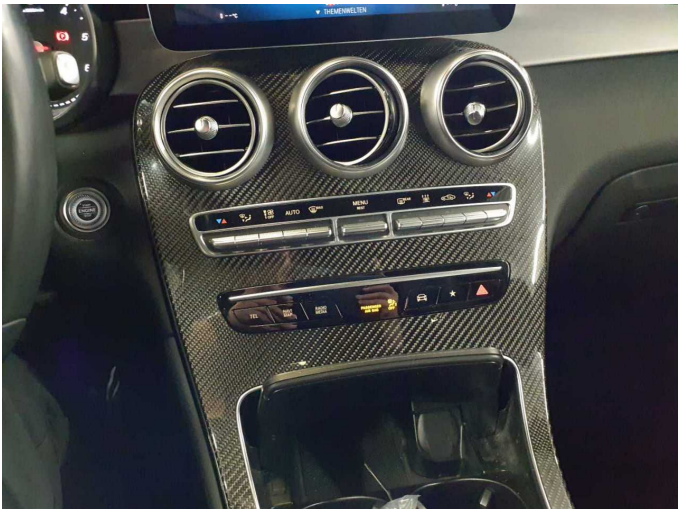


Figure 18: Misc.



Figure 19: Misc.



Figure 20: Misc.

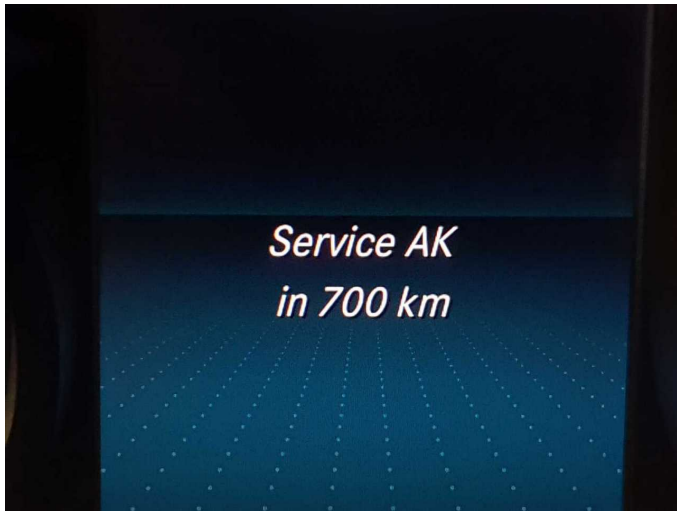


Figure 21: Misc.



Figure 22: Misc.



Figure 23: Misc.



Figure 24: Misc.



Figure 25: Misc.



Figure 26: Misc.



Figure 27: Misc.



Figure 28: Misc.



Figure 29: Misc.

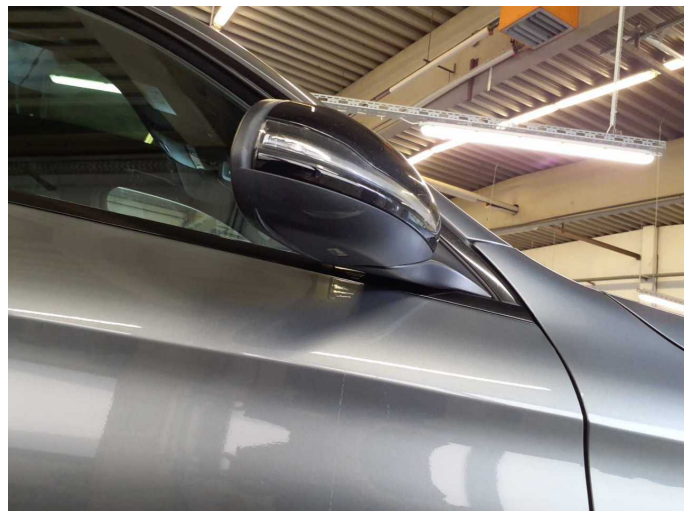


Figure 30: Misc.

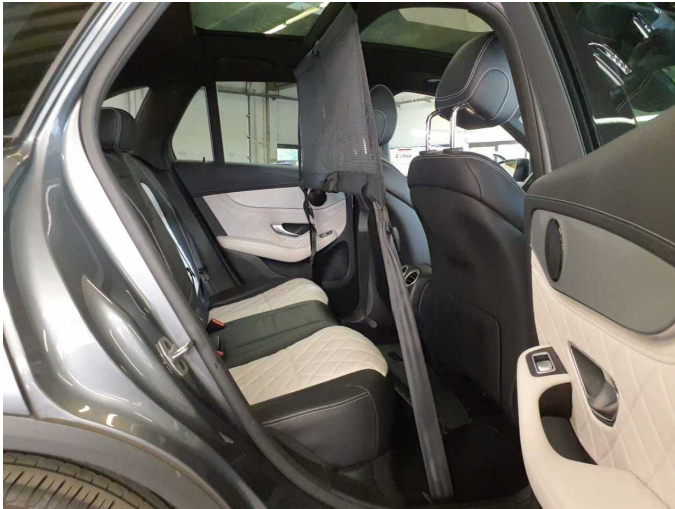


Figure 31: Misc.



Figure 32: Misc.

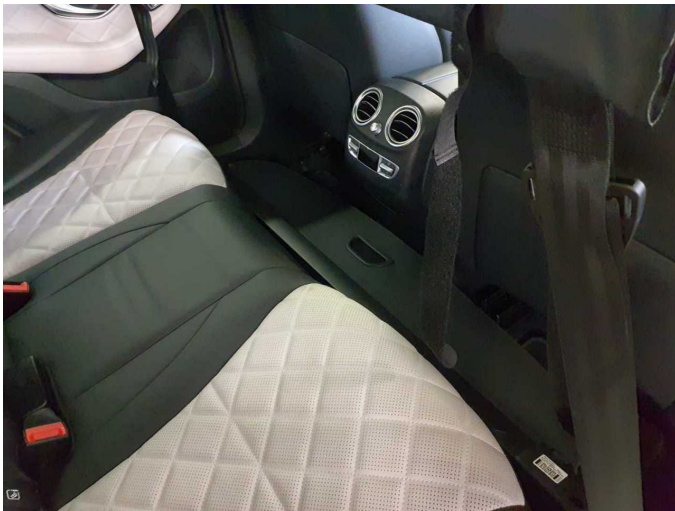


Figure 33: Misc.



Figure 34: Misc.



Figure 35: Misc.



Figure 36: Misc.



Figure 37: Misc.



Figure 38: Misc.

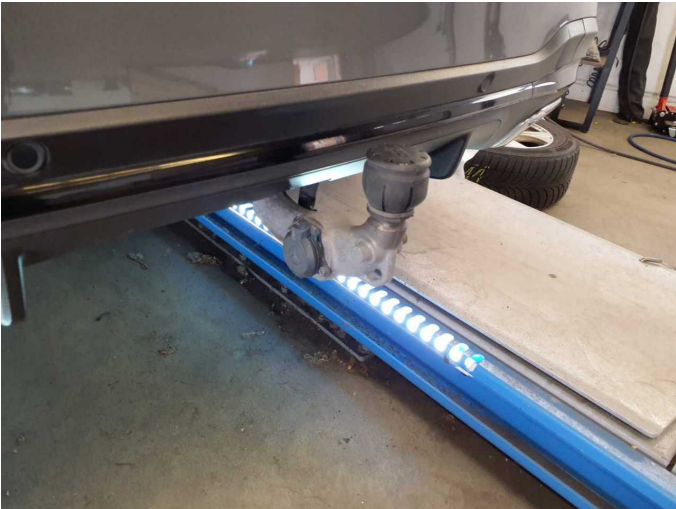


Figure 39: Misc.



Figure 40: Misc.



Figure 41: Misc.

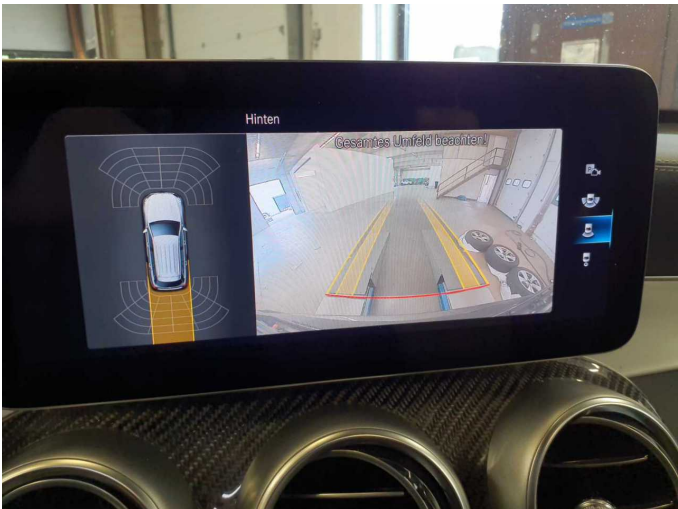


Figure 42: Misc.



Figure 43: Misc.



Figure 44: Misc.



Figure 45: Misc.



Figure 46: Misc.



Damage 1: Mudguard - right side: Inner mudguard - Broken / torn - Replace



Damage 1: Mudguard - right side: Inner mudguard - Broken / torn - Replace



Damage 1: Mudguard - right side: Inner mudguard - Broken / torn - Replace



Damage 1: Mudguard - right side: Inner mudguard - Broken / torn - Replace



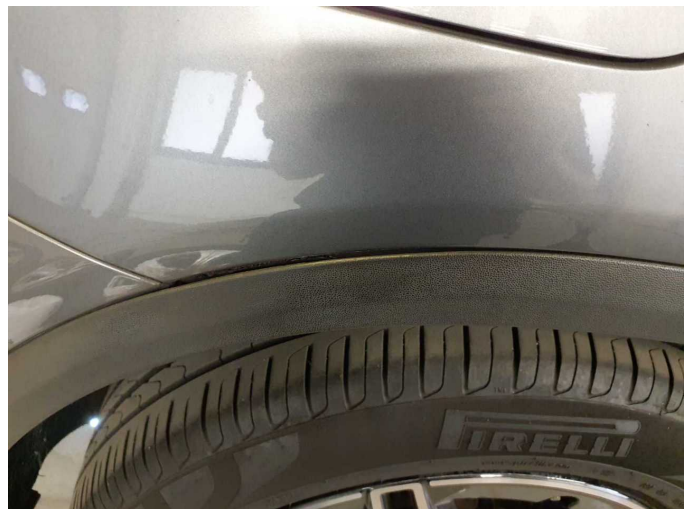
Damage 1: Mudguard - right side: Inner mudguard - Broken / torn - Replace



Damage 2: Side panel - rear right side: Wheel well extension (geklebt) - Loose - Replace



Damage 2: Side panel - rear right side: Wheel well extension (geklebt) - Loose - Replace



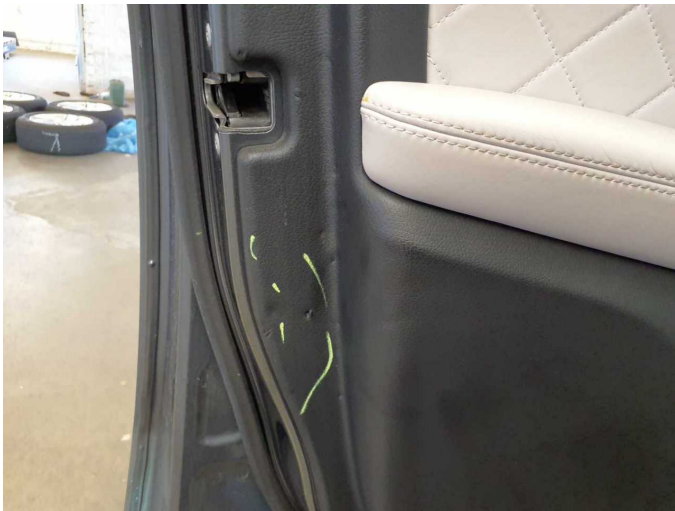
Damage 2: Side panel - rear right side: Wheel well extension (geklebt) - Loose - Replace



Damage 3: Trim / covers: Door trim - front left side - Scratched - Smart repair



Damage 3: Trim / covers: Door trim - front left side - Scratched - Smart repair



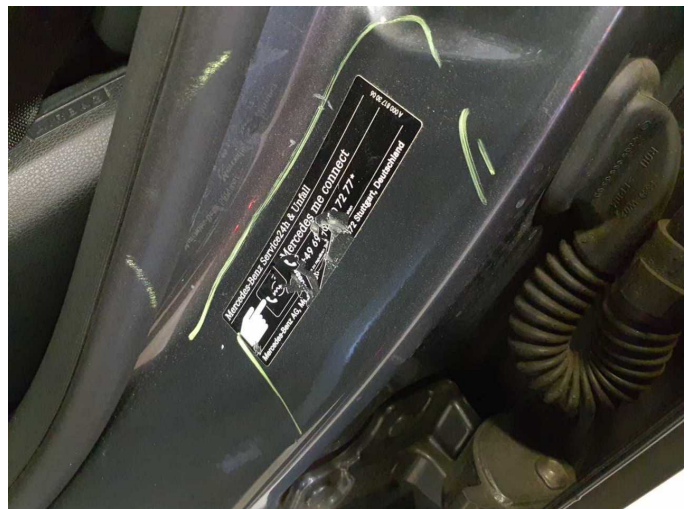
Damage 3: Trim / covers: Door trim - front left side - Scratched - Smart repair



Damage 4: Body: B-pillar - left side - Scratched - Smart repair



Damage 4: Body: B-pillar - left side - Scratched - Smart repair



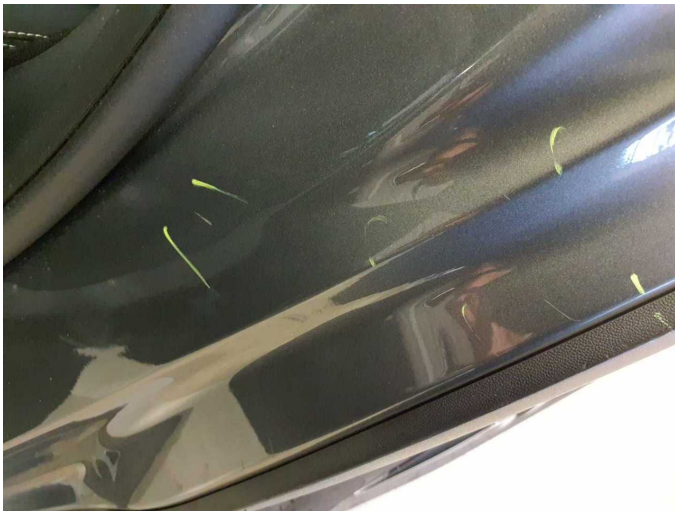
Damage 4: Body: B-pillar - left side - Scratched - Smart repair



Damage 5: Side panel - rear left side: Sill - Scratched - Smart repair



Damage 5: Side panel - rear left side: Sill - Scratched - Smart repair



Damage 5: Side panel - rear left side: Sill - Scratched - Smart repair



Damage 5: Side panel - rear left side: Sill - Scratched - Smart repair



Damage 6: Door - rear left side: Door - Scratched - Smart repair



Damage 6: Door - rear left side: Door - Scratched - Smart repair



Damage 6: Door - rear left side: Door - Scratched - Smart repair



Damage 7: Headlight: Headlight - right side - Scratched - Measure



Damage 7: Headlight: Headlight - right side - Scratched - Measure



Damage 8: Wheel / tyres: Alloy rim - front right side (Materialabtrag) - Scratched - Loss in value



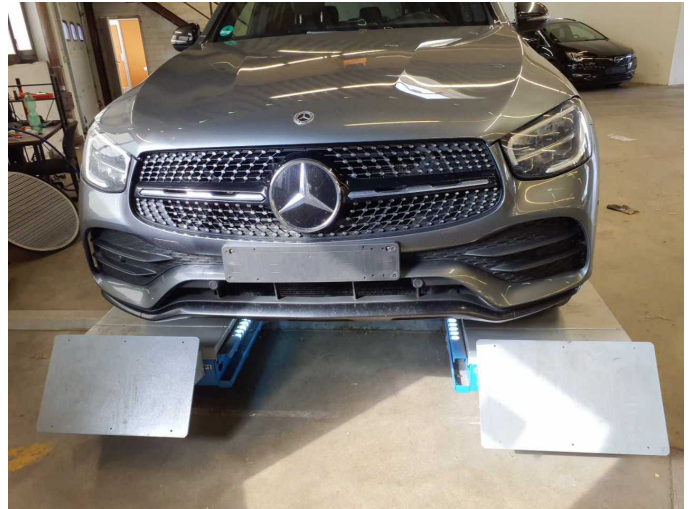
Damage 8: Wheel / tyres: Alloy rim - front right side (Materialabtrag) - Scratched - Loss in value



Damage 8: Wheel / tyres: Alloy rim - front right side (Materialabtrag) - Scratched - Loss in value



Damage 8: Wheel / tyres: Alloy rim - front right side (Materialabtrag) - Scratched - Loss in value



Damage 9: Front bumper: Front bumper - Stone chips - Paint



Damage 9: Front bumper: Front bumper - Stone chips - Paint



Damage 9: Front bumper: Front bumper - Stone chips - Paint



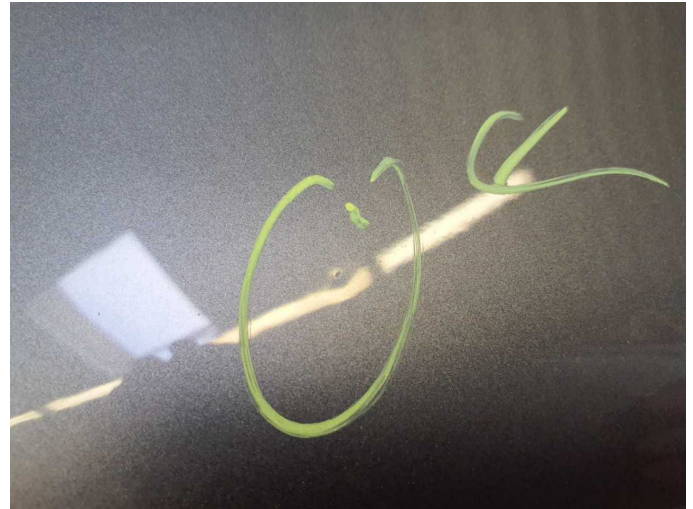
Damage 9: Front bumper: Front bumper - Stone chips - Paint



Damage 9: Front bumper: Front bumper - Stone chips - Paint



Damage 10: Boot lid / rear door: Boot lid - Dent / paintcoat damage - Repair and paint



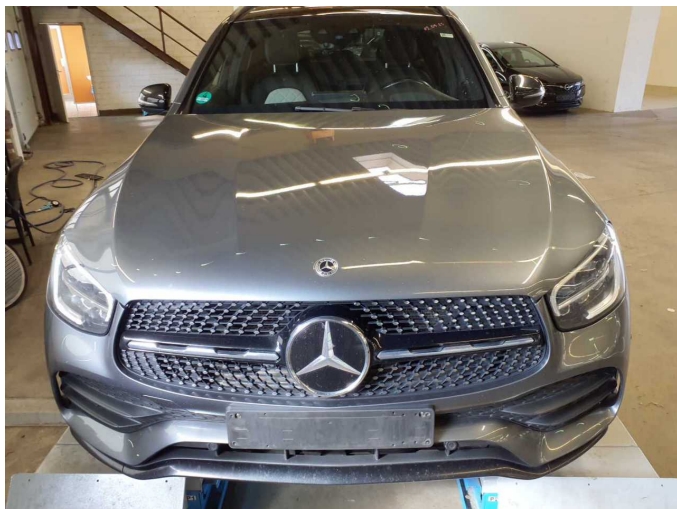
Damage 10: Boot lid / rear door: Boot lid - Dent / paintcoat damage - Repair and paint



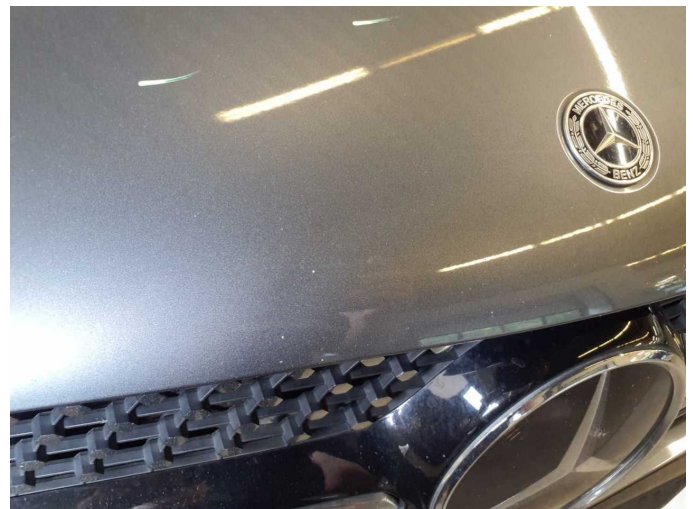
Damage 10: Boot lid / rear door: Boot lid - Dent / paintcoat damage - Repair and paint



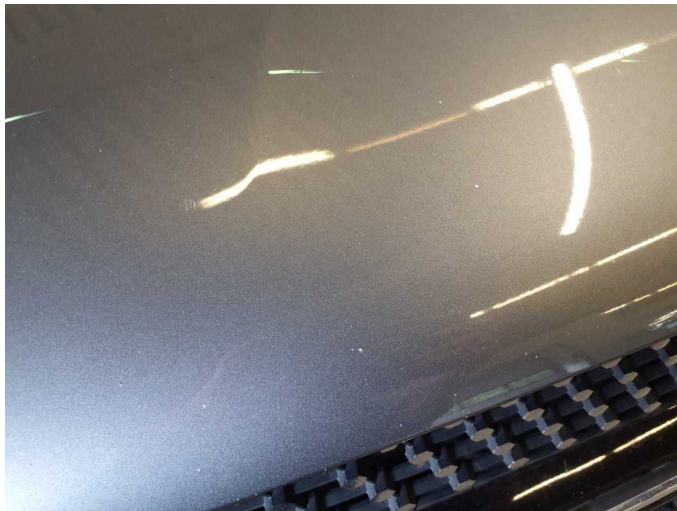
Damage 10: Boot lid / rear door: Boot lid - Dent / paintcoat damage - Repair and paint



Damage 11: Bonnet: Bonnet - Stone chips - Paint



Damage 11: Bonnet: Bonnet - Stone chips - Paint



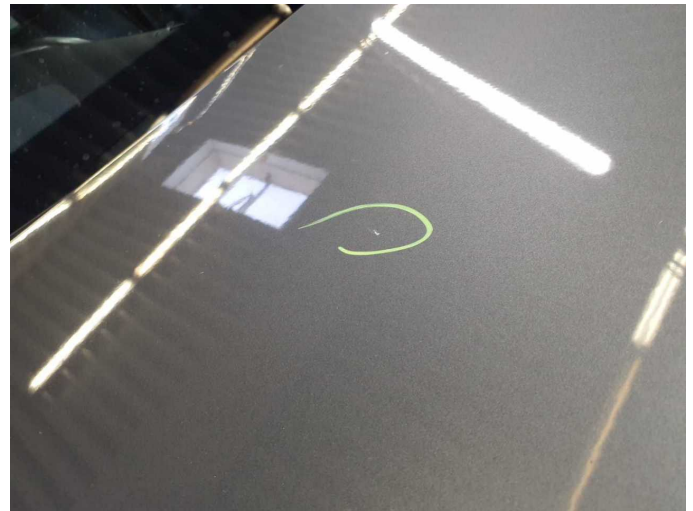
Damage 11: Bonnet: Bonnet - Stone chips - Paint



Damage 11: Bonnet: Bonnet - Stone chips - Paint



Damage 11: Bonnet: Bonnet - Stone chips - Paint



Damage 11: Bonnet: Bonnet - Stone chips - Paint



Wear and tear 1: Vehicle glazing: Windscreen - Stone chips - No deduction



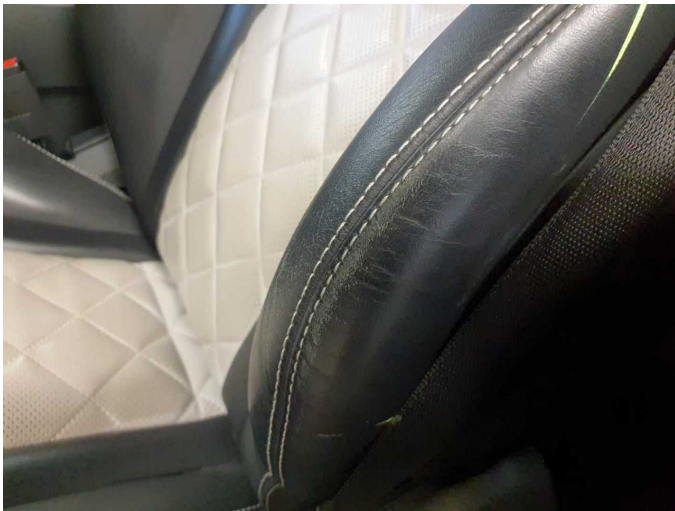
Wear and tear 2: Wheel / tyres: Alloy rim - front left side - Scratched - No deduction



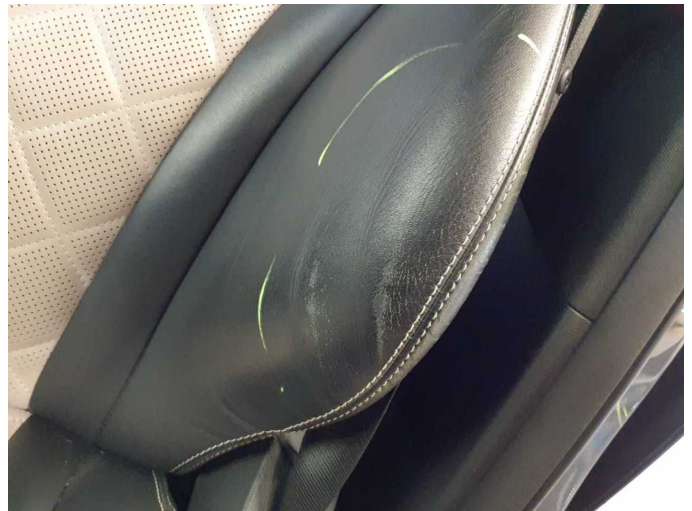
Wear and tear 3: Door - front left side: Door - Stone chips - No deduction



Wear and tear 4: Seat - front: Backrest cover - left side - Abrasion - No deduction



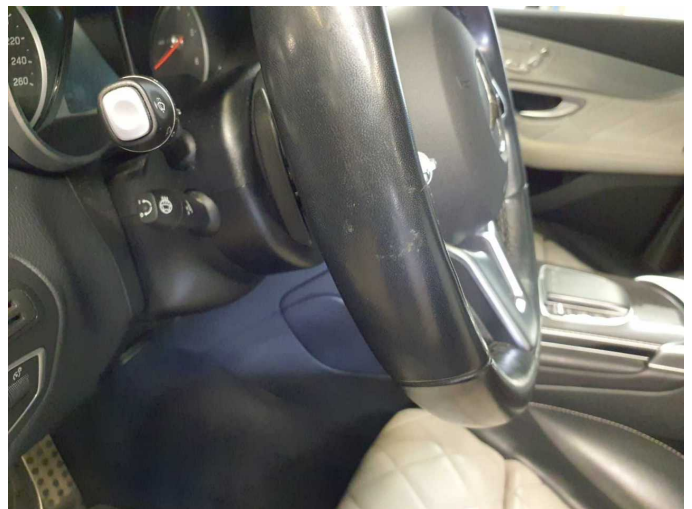
Wear and tear 4: Seat - front: Backrest cover - left side - Abrasion - No deduction



Wear and tear 4: Seat - front: Backrest cover - left side - Abrasion - No deduction



Wear and tear 5: Steering system: Steering wheel - Abrasion - No deduction



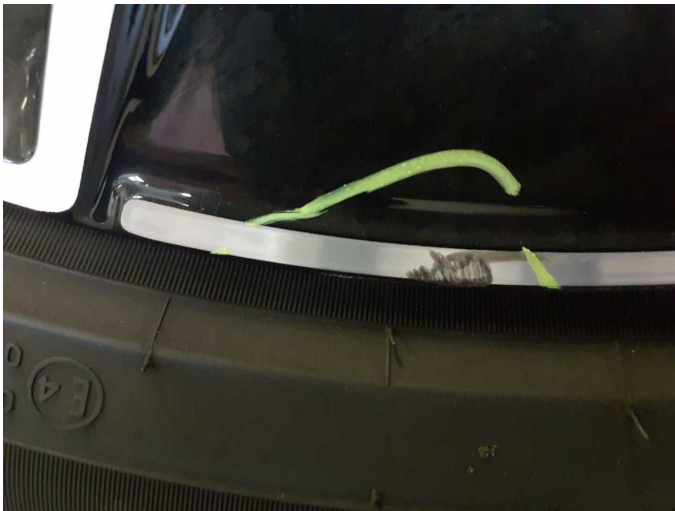
Wear and tear 5: Steering system: Steering wheel - Abrasion - No deduction



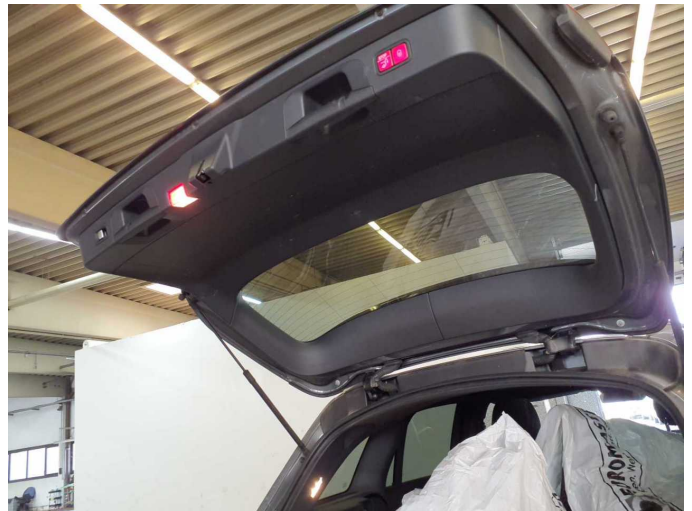
Wear and tear 6: Rear bumper: Rear bumper - Scratched - No deduction



Wear and tear 7: Wheel / tyres: Alloy rim - rear right side - Scratched - No deduction



Wear and tear 7: Wheel / tyres: Alloy rim - rear right side - Scratched - No deduction



Wear and tear 8: Trim / covers: Boot lid - interior trim - Scratched - No deduction



Wear and tear 9: 2nd wheel set: 1 alloy rim - Scratched - No deduction



Wear and tear 9: 2nd wheel set: 1 alloy rim - Scratched - No deduction



Missing part 1: Equipment: Tirefit complete - Missing - Replace



Wartungshistorie

(gemäß Auftraggeber Informationen)

Fahrgestellnummer: W1N2539151F982125

Hersteller / Modell: MERCEDES-BENZ MB GLC 220 d 4Matic 9G-TRONIC AMG Line

Datum	KM-Stand	Beschreibung
01.02.2025	168.635	Bremsklötze hinten; Regelwartungsdienst
22.08.2024	148.135	HU + AU
01.07.2024	148.135	Regelwartungsdienst
18.04.2024	137.345	Bremsscheiben+Beläge v+h
29.11.2023	118.773	Regelwartungsdienst
15.06.2023	90.893	Bremsinspektion vo + hi; Regelwartungsdienst
08.12.2022	53.466	Regelwartungsdienst
22.10.2022	51.335	Bremsinspektion vo + hi
22.05.2022	31.538	Regelwartungsdienst