



Expertise

Protocol number: 41161754
Order No. / Reference: 25025342
Inspection date: 19 Aug 2025

Manufacturer: Mercedes-Benz
VIN: W1N2539151F837834

Model: GLC 220 d 4Matic 9G-TRONIC



Vehicle details	
Manufacturer / Type / Model / Equipment	
Mercedes-Benz GLC 220 d 4Matic 9G-TRONIC	
Vehicle Identification number	W1N2539151F837834
Mileage (Read)	86,182 km
First registration	10 Aug 2020
Number of holders	1
Next periodical technical inspection	10/2025
(Report on hand)	
Power / Engine displacement	143 kw / 1,950 ccm
Fuel type / Cylinder	Diesel / 4
Gearbox / Number of gears	Automatic / 9
Type of drive	All-wheel drive
Type of vehicle	SUV
Colour / colour code	MOJAVESILVER METALLIC
Doors / Seats	5 / 5
Upholstery type	Artificial leather
Colour of upholstery	Black



Vehicle details

Maintenance booklet / proof	digital proof / complete	Next maintenance in	91 Tag(e)
Last maintenance on / at	11/2024 at 71,387 km		
Key is / should be	2 / 2	FZG documents	ZB#2 (B) was available (copy), ZB#1 (S) was not available
		Letter No.	FT808802
Previous damage / Accident	None detectable	Repainting	None detectable
Inspection conditions	sufficient	Lifting equipment / pit	yes
Test drive	Not performed	Engine function test	Performed
Manufacturer key number/ type code number	2222 / AKG 00025		
Emission standard	EURO6;WLTP;AM;PI/CI; M, N1 I	Fine dust sticker	
Permitted total weight	2,500 kg	Empty weight	

Tyres

Mounted tyres

#	Tyre size	Type of tyre	Manufacturer	Tread depth
1)	235/65 R17 104W	Summer tyres on Light alloy	Hankook	5mm / 5mm
2)	235/65 R17 104V	Summer tyres on Light alloy	Hankook	5mm / 5mm

Additional tyres

#	Tyre size	Type of tyre	Manufacturer	Tread depth
1)	235/65 R17 104H	Winter tyres on Light alloy	Continental	5mm / 5mm
2)	235/65 R17 104H	Winter tyres on Light alloy	Continental	6mm / 6mm

Legend: Tread depth information for tires on the left is in the first place, for tires on the right is in the second place on the axle in the direction of travel

Equipment

Standard equipment

- Airbag for driver and front passenger
- Airbag: Sidebag for driver and front passenger
- Active Brake Assist
- Anti-lock braking system (ABS)
- Automatic passenger airbag deactivation
- On-board computer
- Roof rails in polished aluminum
- tachometer
- DYNAMIC SELECT
- Electronic Stability Program (ESP)
- Chassis: AGILITY CONTROL chassis
- Electric parking brake
- Rear window heated
- Interior headliner fabric crystal grey
- Climate: THERMATIC automatic climate control with 2 climate zones
- Communication module (LTE) for the use of Mercedes me connect services
- LED high-performance headlights
- Steering column mechanically adjustable in height and length
- Navigation accessories: Advanced functions MBUX
- Package: Interior light
- Radio: MBUX multimedia system
- Tire pressure monitoring (TPMS)
- Power steering
- Seats: I-Size child restraint system on the outer rear seats
- Cruise control
- Pre-installation for vehicle setup
- Immobiliser
- Decorative elements: piano lacquer look black
- Airbag: Kneebag for driver
- Airbag: Windowbags
- 4MATIC all-wheel drive
- ATTENTION ASSIST
- Exterior mirrors left and right heated, electrically adjustable from the inside
- diesel particulate filter
- Third brake light in LED technology
- EASY-Pack load compartment cover (removable)
- Driving light assistant
- 4-way electric window lifter
- Transmission: 9G-TRONIC
- Rear window wiper
- KEYLESS-GO start function
- Remote trunk lid release
- Instrument cluster with 2 tube-shaped round instruments, 13.97 cm (5.5") multifunction display
- 5-way headrests
- Steering wheel: Multifunction sports steering wheel in 3-spoke design in black leather
- Mercedes-Benz emergency call system
- Package: Chrome
- Upholstery: Aberdeen black fabric
- Radio accessories: Touchpad
- Windscreen wipers with rain sensor
- Seats: Folding rear seat backrests
- Seats: Front seats electrically adjustable
- Pre-installation for vehicle monitoring
- High-visibility vest for drivers
- Central locking

Extra equipment

- Chassis: AGILITY CONTROL chassis in conjunction with AMG Line Exterior or OFF-ROAD Exterior
- Package: Advanced Infotainment
- Package: Business (Parking Package: Active Parking Assist with PARKTRONIC Advanced Infotainment Package: Media display with touch operation, smartphone integration - Apple CarPlay and Android Auto, Connectivity Package Navigation Comfort Package: Seat heating for driver and front passenger, Seat Comfort Package - electric and manual adjustment options for the front seats Fuel tank with larger capacity (not for 300 e))
- Upholstery: ARTICO man-made leather
- Wheels: 43.2 cm (17") alloy wheels, 4-spoke, 5-twin-spoke design
- Partition net for luggage compartment separation (and occupant protection)
- Elimination of type marking on the trunk lid
- Paint finish: metallic
- Navigation accessories: Pre-installation for Live Traffic Information
- Package: KEYLESS-GO Comfort (vehicle key with KEYLESS-GO functionality - KEYLESS-GO access and driving authorization system - start/stop button - convenient opening and closing - door handles with chrome inserts - HANDS-FREE ACCESS - handle recess lighting - remote trunk lid locking - EASY-PACK luggage compartment lid)
- Package: Comfort
- Package: Park
- Radio accessories: Digital radio
- Telephone: Multifunctional telephony (wireless connection of mobile phone with external antenna - wireless charging for compatible mobile phones - Bluetooth and WLAN pairing wirelessly via NFC (Near Field Communication) technology)



- Heat and sound-insulating acoustic glass (The heat and sound-insulating acoustic glass for the front side windows offers you greater noise comfort.)
- Decorative elements: anthracite open-pore oak wood

Brief expert findings

Documents submitted	At the time of the inspection, the registration certificate Part 2 (letter) was available, but the registration certificate Part 1 (certificate) was not. (Copy)
VIN comparison	The vehicle identification number (VIN) was read from the vehicle and its conformity with the submitted documents was verified during the inspection by the undersigned.
Inspection	The inspection conditions were sufficient for the assessment of the vehicle. Lifting equipment and a pit were available for examining the vehicle.
Test drive	No test drive/maneuvering was carried out during the inspection of the vehicle.
Engine function test	An engine test run was performed.

Value reducing factors

No.	Component group	Description
1	Door - front left side	Door - dent(s) - Smooth repair work

Wear and tear

No.	Component group	Description
1	Rear bumper	Rear bumper - Scratch(es) - No deduction

The vehicle shows signs of wear commensurate with its age and use.

Order/Scope of order

The order was placed to prepare a sales report for the vehicle described. This includes the following:

- Description of core relevant information about the vehicle
- Documentation of equipment features
(*Delivery by third-party service providers*)
- Documentation of damage, defects, missing parts
- Documentation of previous damage, unrepaired previous damage, repainting
- a brief visual or functional inspection of the equipment details if possible.
(*Functional tests of driver assistance systems are not included in the scope of services!*)
- a photo documentation of the vehicle



Basis for the order

This product is based on the Alphabet Fuhrpark GmbH guidelines for vehicle returns and valuations. The expert makes the explicit findings in each individual case objectively within the framework of the specified standards based on his or her own expertise.

The vehicle inspection takes place in a disassembled state.

Damage or defects that can only be detected during disassembly/diagnosis work or through advanced knowledge remain within the scope of the prognosis risk. An extended risk exists for concealed defects caused by fraudulent deception and not identifiable by the expert.

Damage or defects resulting from normal use or wear and tear of the vehicle will be accepted according to the applicable standard.

There was no explicit identification or monetary consideration of the expected features within the product.

Features which in their nature and severity slightly exceed normal use but do not constitute unacceptable damage will be documented and identified under signs of use if necessary.

Damage or defects which, according to the underlying standard, can no longer be attributed to normal use or wear and tear are listed in the product under "Depreciating Factors".

Depending on the product specification, a monetary ID can be provided. If this takes place, the costs can be 100% d or pro rata depending on the vehicle's age and mileage.

Previous damages

Apparently, no repaired previous damage could be found on the vehicle.

Comments

Der Winterradsatz ist nicht Bestandteil der vorliegenden Fahrzeugausstattung.



Figure 1: Diagonal front (left)



Figure 2: Diagonal front (right)



Figure 3: Diagonal rear (left)



Figure 4: Diagonal rear (right)



Figure 5: Interior - front



Figure 6: Interior - rear



Figure 7: Instrument panel



Figure 8: interior 360° view ([Online link](#))



Figure 9: Cargo area



Figure 10: VIN



Figure 11: Mounted tyres

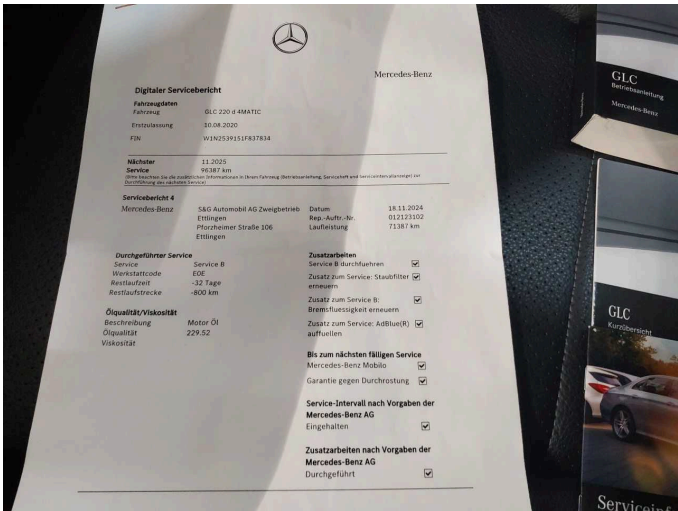


Figure 12: Documents



Figure 13: Documents



Figure 14: Additional tyres



Figure 15: Additional tyres



Figure 16: Navigation

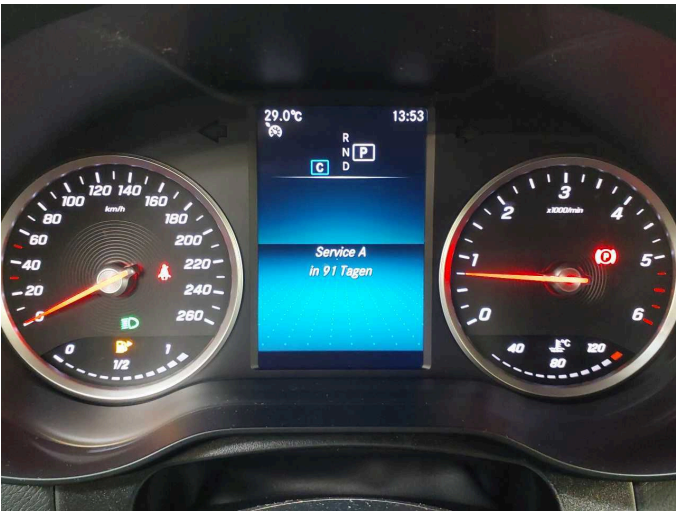


Figure 17: Misc.

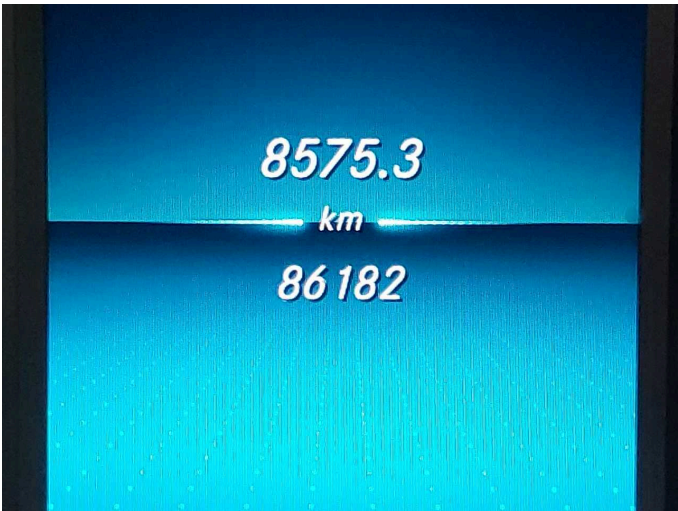


Figure 18: Misc.



Figure 19: Misc.



Figure 20: Misc.



Figure 21: Misc.

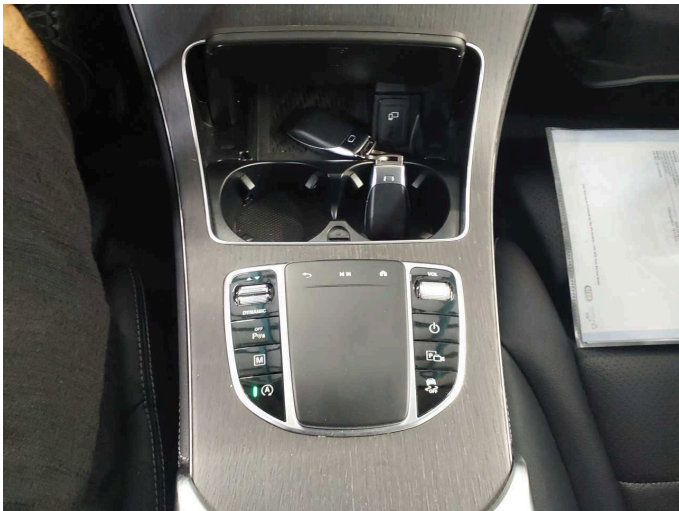


Figure 22: Misc.

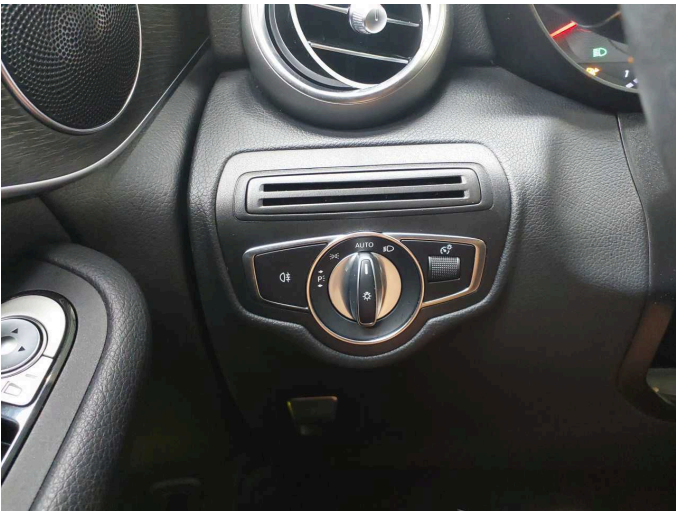


Figure 23: Misc.



Figure 24: Misc.



Figure 25: Misc.

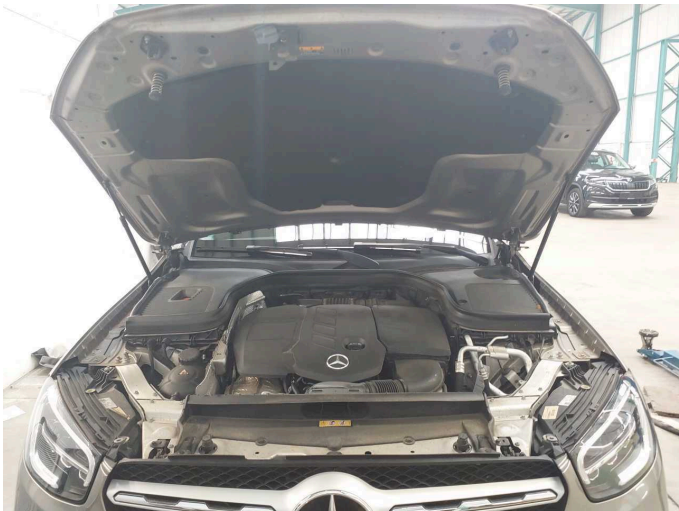


Figure 26: Misc.



Figure 27: Misc.



Figure 28: Misc.



Figure 29: Misc.



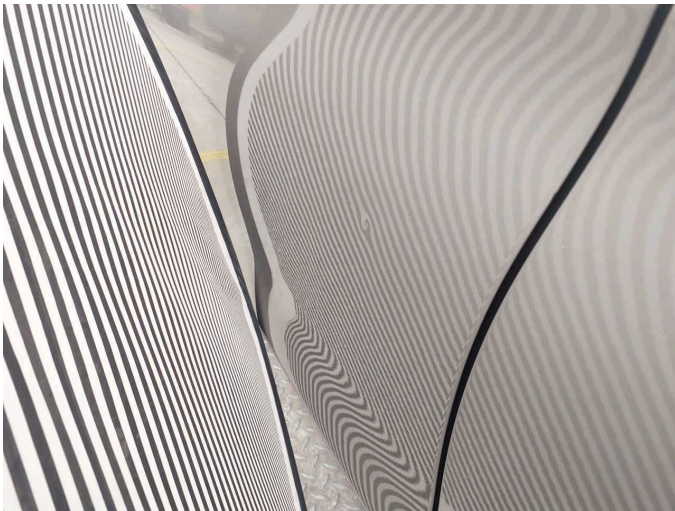
Figure 30: Misc.



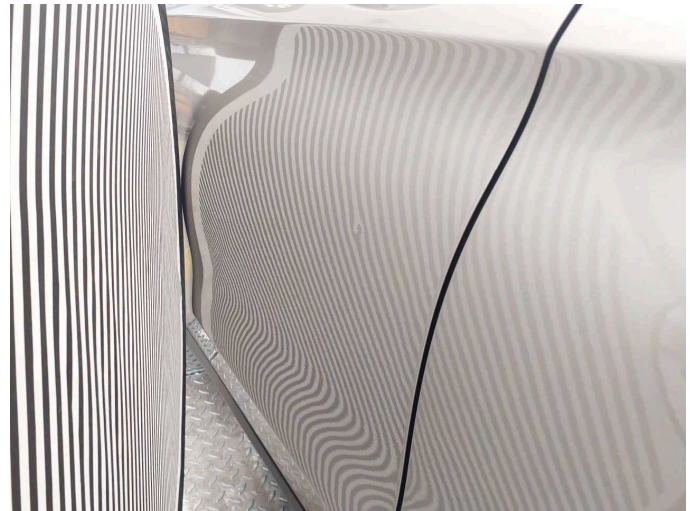
Figure 31: Misc.



Damage 1: Door - front left side: Door - dent(s) - Smooth repair work



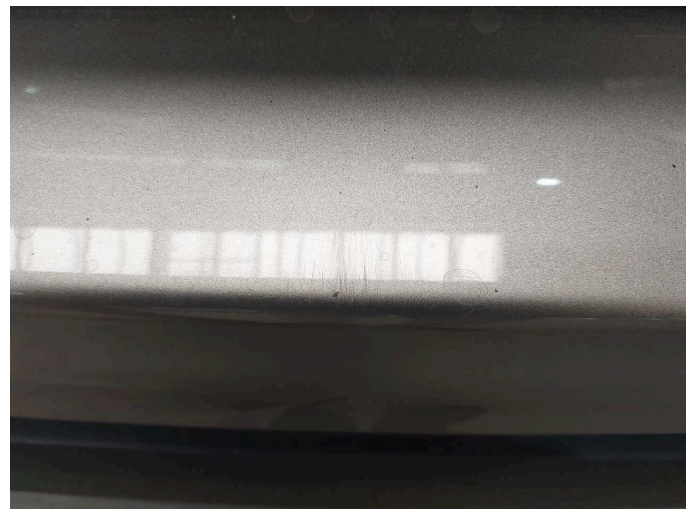
Damage 1: Door - front left side: Door - dent(s) - Smooth repair work



Damage 1: Door - front left side: Door - dent(s) - Smooth repair work



Wear and tear 1: Rear bumper: Rear bumper - Scratch(es) - No deduction



Wear and tear 1: Rear bumper: Rear bumper - Scratch(es) - No deduction



Wear and tear 1: Rear bumper: Rear bumper - Scratch(es) - No deduction



Wear and tear 1: Rear bumper: Rear bumper - Scratch(es) - No deduction



Wartungshistorie

(gemäß Auftraggeber Informationen)

Fahrgestellnummer: W1N2539151F837834

Hersteller / Modell: MERCEDES-BENZ MB GLC 220 d 4Matic 9G-TRONIC

Datum	KM-Stand	Beschreibung
18.11.2024	71.387	Regelwartungsdienst
24.10.2023	45.542	HU + AU
18.10.2023	45.542	Regelwartungsdienst
07.10.2022	23.737	Regelwartungsdienst
20.08.2021	8.359	Kleine Inspektion