



Expertise

Protocol number: 40210400
Order No. / Reference: 24786353
Inspection date: 17 Jun 2025

Manufacturer: Mercedes-Benz

Model: GLC 300 de 4Matic 9G-TRONIC AMG Line

VIN: W1N2539111V371469



Vehicle details	
Manufacturer / Type / Model / Equipment	
Mercedes-Benz GLC 300 de 4Matic 9G-TRONIC AMG Line	
Vehicle Identification number	W1N2539111V371469
Mileage (Read)	131,012 km
First registration	21 Apr 2022
Number of holders	1
Power / Engine displacement	143 kw / 1,950 ccm
Fuel type / Cylinder	Hybr.D/E ext. edition / 4
Gearbox / Number of gears	Automatic / 9
Type of drive	All-wheel drive
Type of vehicle	SUV
Colour / colour code	SELENITGRAU - METALLKLACK
Doors / Seats	5 / 5
Upholstery type	Alcantara / Leather
Colour of upholstery	Black



Vehicle details

Maintenance booklet / proof	digital proof / complete	Next maintenance in	185 Tag(e)
Last maintenance on / at	12/2024 at 119,170 km		
Key is / should be	2 / 2	FZG documents	ZB#2 (B) was available (copy), ZB#1 (S) was not available
		Letter No.	GF814166
Previous damage / Accident	Detectable	Repainting	Detectable
Inspection conditions	Sufficient	Lifting equipment / pit	yes
Test drive	Not performed	Engine function test	Performed
Manufacturer key number/ type code number	2222 / ASV 00057		
Emission standard	EURO6;WLTP;AP;PI/CI; M, N1 I	Fine dust sticker	
Permitted total weight	2,650 kg	Empty weight	

Tyres

Mounted tyres

#	Tyre size	Type of tyre	Manufacturer	Tread depth
1)	235/55 R19 105W	Summer tyres on Light alloy	Michelin	4mm / 4mm
2)	235/55 R19 105W	Summer tyres on Light alloy	Michelin	5mm / 5mm

Legend: Tread depth information for tires on the left is in the first place, for tires on the right is in the second place on the axle in the direction of travel



Equipment

Standard equipment

- Airbag for driver and front passenger
- Airbag: Sidebag for driver and front passenger
- Active Brake Assist
- 4MATIC all-wheel drive
- ATTENTION ASSIST
- Exterior mirrors left and right heated, electrically adjustable from the inside
- Roof rails in polished aluminum
- tachometer
- DYNAMIC SELECT
- Electronic Stability Program (ESP)
- chassis with higher ground clearance
- Electric parking brake
- Transmission: 9G-TRONIC
- Rear window wiper
- KEYLESS-GO start function
- Remote trunk lid release
- Instrument cluster with 2 tube-shaped round instruments, 13.97 cm (5.5") multifunction display
- 5-way headrests
- Charging system: AC on-board charger (AC charging)
- Steering wheel: Multifunctional sports steering wheel in 3-spoke design in black nappa leather
- Steering: Sport Direct-Steer
- Navigation accessories: Advanced functions MBUX
- Package: Interior light
- Upholstery: ARTICO man-made leather/DINAMICA microfiber
- Radio accessories: Touchpad
- Remote Services Plus
- Power steering
- Seats: Folding rear seat backrests
- Seats: Front seats electrically adjustable
- High-visibility vest for drivers
- Central locking
- Airbag: Kneebag for driver
- Airbag: Windowbags
- acoustic environmental protection
- Anti-lock braking system (ABS)
- Automatic passenger airbag deactivation
- On-board computer
- Brake system with larger brake discs on the front axle
- diesel particulate filter
- Third brake light in LED technology
- EASY-Pack load compartment cover (removable)
- Driving light assistant
- 4-way electric window lifter
- Floor mats in black with AMG lettering
- Rear window heated
- Interior headliner fabric crystal grey
- Climate: THERMATIC automatic climate control with 2 climate zones
- Communication module (LTE) for the use of Mercedes me connect services
- Charging cable for household socket, 5m, smooth
- LED high-performance headlights
- Steering column mechanically adjustable in height and length
- Mercedes-Benz emergency call system
- Package: Storage
- Package: OFF-ROAD Exterior
- Radio: MBUX multimedia system
- Radio accessories: Digital radio
- Tire pressure monitoring (TPMS)
- Windscreen wipers with rain sensor
- Seat: Front sports seats
- Seats: I-Size child restraint system on the outer rear seats
- Cruise control
- Immobiliser
- Decorative elements: piano lacquer look black/aluminium with light longitudinal grain

Extra equipment

- Trailer hitch with ESP trailer stabilization (fully electrically foldable and extendable)
- Charging cable for wallbox and public charging stations, 5m, smooth (This charging cable, also called Mode 3 cable, allows you to charge the vehicle battery at the wallbox or at public charging stations with up to 7.4 kW (Type 2, 3-phase, 20 A).)
- Package: Advanced Park (Parking package with rear view camera Active Parking Assistant with PARKTRONIC)
- Interior headliner fabric black
- Paint finish: metallic
- Navigation accessories: Preparation for Live Traffic Information (With Live Traffic Information, your navigation system receives traffic data in real time and optimizes dynamic route guidance. Thanks to precise and up-to-date information on traffic jams, stop-and-go traffic and more, you are supported in reducing travel times.)



- Package: Business (for plug-in hybrid vehicles) (Advanced Parking Package: Active Parking Assistant PARKTRONIC with rear view camera Advanced Infotainment Package: Media display with touch operation, smartphone integration-Apple CarPlay and Android Auto, connectivity package navigation, traffic sign assistant Comfort Package: Seat heating for driver and front passenger, seat comfort package-electric and manual adjustment options for the front seats Public Charging Package)
- Remote and Charging Services Plus (The Remote and Charging Services Plus package connects you to your vehicle. You can locate it and control selected functions remotely if desired. With Mercedes me Charge, you can charge at many public charging stations with maximum cost transparency. You only need to register once and receive a central bill.)
- Wheels: 48.3 cm (19") AMG light-alloy wheels in 5-twin-spoke design (painted tremolite grey with a high-sheen finish, 235/55 R19 with 8 J x 19 ET 38)
- Heat-insulating dark tinted glass all around from B-pillar
- Decorative elements: Black open-pored ash wood / light longitudinally ground aluminium
- Package: AMG Line Exterior (Plug-in Hybrid) (AMG styling, consisting of an AMG front apron with sporty air intakes and chrome trim, an AMG rear apron in a diffuser look with a black insert, a diamond grille with chrome pins, an integrated Mercedes star, and a matt iridium silver louvre with chrome inserts, 48.3 cm (19") AMG 5-twin-spoke alloy wheels, painted in tremolite gray with a high-sheen finish, tires 235/55 R19 on 8 J x 19 ET 38, and two visible tailpipe trims integrated into the bumper)
- Package: Comfort (Seat heating for driver and front passenger, electric and manual adjustment options for driver and front passenger seats, electro-pneumatic 4-way lumbar support and lateral support adjustment with control element on the seat, electric seat cushion inclination adjustment, electric height adjustment, electric backrest adjustment, mechanical seat cushion depth adjustment by 6 cm with leg rest pad, mechanical length adjustment, mechanical headrest adjustment)
- Heat and noise insulating acoustic glass (The heat and noise insulating acoustic glass for the front side windows offers you more noise comfort.)

Brief expert findings

Documents submitted	At the time of the inspection, the registration certificate Part 2 (letter) was available, but the registration certificate Part 1 (certificate) was not. (Copy)
VIN comparison	The vehicle identification number (VIN) was read and the undersigned verified that it matched the documents submitted during the inspection.
Inspection	The inspection conditions were sufficient for the assessment of the vehicle. Lifting equipment and a pit were available for examining the vehicle.
Test drive	No test drive/maneuvering was carried out during the inspection of the vehicle.
Engine function test	An engine test run was performed.

Value reducing factors

No.	Component group	Description
1	Bonnet	Bonnet - dent(s) - Smooth repair work
2	Roof	Roof - Dent / paintcoat damage - Smart repair
3	Indicator - front	Mirror - right side - Scratched - Replace
4	Rear bumper	Spoiler - Scratched - Loss in value
5	Wheel / tyres	Alloy rim - rear left side - Scratched - Replace
6	Wheel / tyres	Alloy rim - front right side - Scratched - Replace

Wear and tear

No.	Component group	Description
1	Vehicle glazing	Windscreen - Stone chips - No deduction

The vehicle shows signs of wear commensurate with its age and use.



Previous damages

No.	Previous damage	Extent of damage (Net)
1	Side - left, Provided by user / customer, from 23 Sept 2023	17.905,70 €

Accident damages

No.	Accident
1	Front, Underbody

Repainting

No.	Repainting
1	Mudguard - left side, Mudguard - right side, Side panel - rear right side, Door - rear left side, Door - front left side, Professionally carried out, Invoice of repair done Non-existent

Paint coat thickness measurement

Mudguard - left side	248 µm	Mudguard - right side	211 µm
Side panel - rear left side	268 µm	Door - rear left side	236 µm
Door - front left side	204 µm		

Order/Scope of order

The order was placed to prepare a sales report for the vehicle described. This includes the following:

- Description of core relevant information about the vehicle
- Documentation of equipment features
(Delivery by third-party service providers)
- Documentation of damage, defects, missing parts
- Documentation of previous damage, unrepaired previous damage, repainting
- a brief visual or functional inspection of the equipment details if possible.
(Functional tests of driver assistance systems are not included in the scope of services!)
- a photo documentation of the vehicle

Basis for the order

This product is based on the Alphabet Fuhrpark GmbH guidelines for vehicle returns and valuations. The expert makes the explicit findings in each individual case objectively within the framework of the specified standards based on his or her own expertise.

The vehicle inspection takes place in a disassembled state.

Damage or defects that can only be detected during disassembly/diagnosis work or through advanced knowledge remain within the scope of the prognosis risk. An extended risk exists for concealed defects caused by fraudulent deception and not identifiable by the expert.

Damage or defects resulting from normal use or wear and tear of the vehicle will be accepted according to the applicable standard.

There was no explicit identification or monetary consideration of the expected features within the product.

Features which in their nature and severity slightly exceed normal use but do not constitute unacceptable damage will be documented and identified under signs of use if necessary.

Damage or defects which, according to the underlying standard, can no longer be attributed to normal use or wear and tear are listed in the product under "Depreciating Factors".

Depending on the product specification, a monetary ID can be provided. If this takes place, the costs can be 100% d or pro rata depending on the vehicle's age and mileage.



Previous damages

Non-repaired previous damages were found at the vehicle. The necessary repair costs are listed in the expert report or if necessary, are listed in detail in a separately enclosed repair cost calculation.

Comments

Das Fahrzeug befand sich zum Besichtigungszeitpunkt in beschädigtem, nicht demontiertem Zustand. Schadenausweitung möglich, Zusatzkosten können entstehen



Figure 1: Diagonal front (left)



Figure 2: Diagonal front (right)



Figure 3: Diagonal rear (left)



Figure 4: Diagonal rear (right)



Figure 5: Interior - front



Figure 6: Interior - rear



Figure 7: Instrument cluster



Figure 8: Instrument panel



Figure 9: interior 360° view



Figure 10: Cargo area



Figure 11: VIN



Figure 12: Mounted tyres



Figure 13: Documents

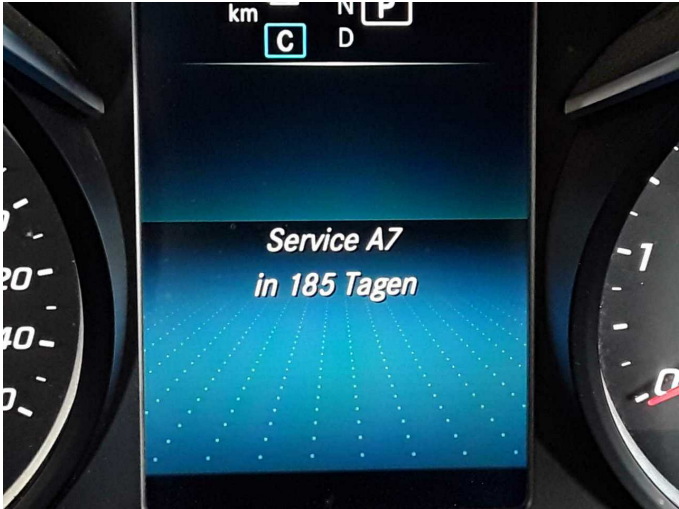


Figure 14: Documents



Figure 15: Documents



Figure 16: Navigation



Figure 17: Misc.



Figure 18: Misc.



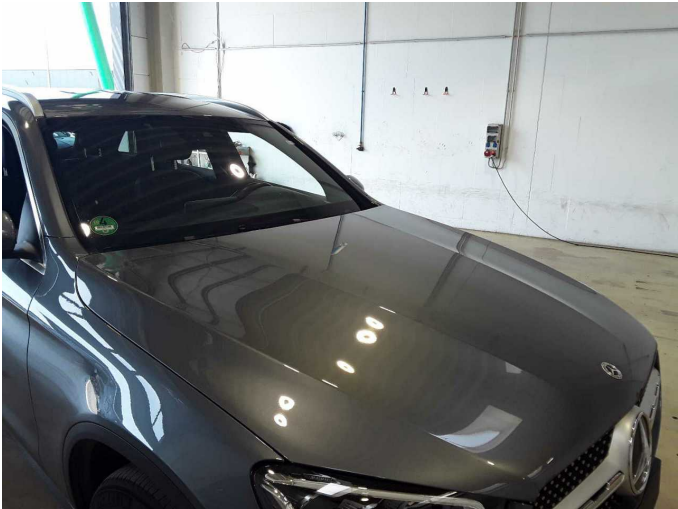
Figure 19: Misc.



Figure 20: Misc.



Figure 21: Misc.



Damage 1: Bonnet: Bonnet - dent(s) - Smooth repair work



Damage 1: Bonnet: Bonnet - dent(s) - Smooth repair work



Damage 1: Bonnet: Bonnet - dent(s) - Smooth repair work



Damage 1: Bonnet: Bonnet - dent(s) - Smooth repair work



Damage 2: Roof: Roof - Dent / paintcoat damage - Smart repair



Damage 2: Roof: Roof - Dent / paintcoat damage - Smart repair



Damage 2: Roof: Roof - Dent / paintcoat damage - Smart repair



Damage 3: Indicator - front: Mirror - right side - Scratched - Replace



Damage 3: Indicator - front: Mirror - right side - Scratched - Replace



Damage 4: Rear bumper: Spoiler - Scratched - Loss in value



Damage 4: Rear bumper: Spoiler - Scratched - Loss in value



Damage 5: Wheel / tyres: Alloy rim - rear left side - Scratched - Replace



Damage 5: Wheel / tyres: Alloy rim - rear left side - Scratched - Replace



Damage 6: Wheel / tyres: Alloy rim - front right side - Scratched - Replace



Damage 6: Wheel / tyres: Alloy rim - front right side - Scratched - Replace



Accident 1: Front, Underbody



Accident 1: Front, Underbody



Accident 1: Front, Underbody



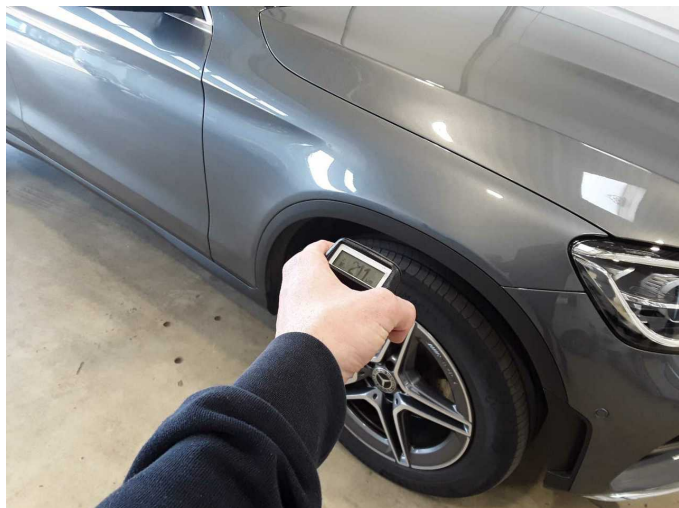
Accident 1: Front, Underbody



Accident 1: Front, Underbody



Accident 1: Front, Underbody



Repainting 1: Mudguard - left side, Mudguard - right side, Side panel - rear right side, Door - rear left side, Door - front left side



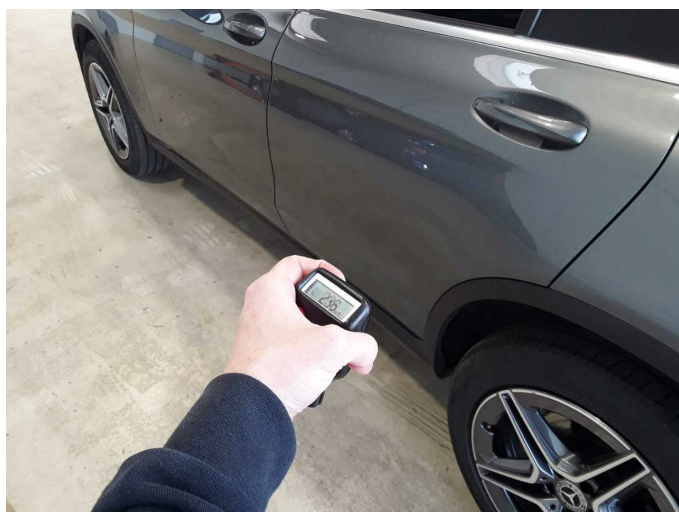
Repainting 1: Mudguard - left side, Mudguard - right side, Side panel - rear right side, Door - rear left side, Door - front left side



Repainting 1: Mudguard - left side, Mudguard - right side, Side panel - rear right side, Door - rear left side, Door - front left side



Repainting 1: Mudguard - left side, Mudguard - right side, Side panel - rear right side, Door - rear left side, Door - front left side



Repainting 1: Mudguard - left side, Mudguard - right side, Side panel - rear right side, Door - rear left side, Door - front left side



Repainting 1: Mudguard - left side, Mudguard - right side, Side panel - rear right side, Door - rear left side, Door - front left side



Repainting 1: Mudguard - left side, Mudguard - right side, Side panel - rear right side, Door - rear left side, Door - front left side



Repainting 1: Mudguard - left side, Mudguard - right side, Side panel - rear right side, Door - rear left side, Door - front left side



Repainting 1: Mudguard - left side, Mudguard - right side, Side panel - rear right side, Door - rear left side, Door - front left side



Repainting 1: Mudguard - left side, Mudguard - right side, Side panel - rear right side, Door - rear left side, Door - front left side



Wartungshistorie

(gemäß Auftraggeber Informationen)

Fahrgestellnummer: W1N2539111V371469

Hersteller / Modell: MERCEDES-BENZ MB GLC 300 de 4Matic 9G-TRONIC AMG Line

Datum	KM-Stand	Beschreibung
19.12.2024	119.170	Regelwartungsdienst
23.04.2024	91.920	Bremsinspektion vo + hi
20.03.2024	87.510	Regelwartungsdienst
13.07.2023	58.485	Regelwartungsdienst
30.11.2022	28.229	Regelwartungsdienst