



Expertise

Protocol number: 41218138
Order No. / Reference: 25042873
Inspection date: 20 Aug 2025

Manufacturer: Mercedes-Benz
VIN: W1N2539111V367588

Model: GLC 300 de 4Matic 9G-TRONIC AMG Line



Vehicle details	
Manufacturer / Type / Model / Equipment	
Mercedes-Benz GLC 300 de 4Matic 9G-TRONIC AMG Line	
Vehicle Identification number	W1N2539111V367588
Mileage (Read)	91,550 km
First registration	29 Mar 2022
Number of holders	1
Power / Engine displacement	143 kw / 1,950 ccm
Fuel type / Cylinder	Hybr.D/E ext. edition / 4
Gearbox / Number of gears	Automatic / 9
Type of drive	All-wheel drive
Type of vehicle	SUV
Colour / colour code	DESIGNO HYACINTHROT - METALLICLACK
Doors / Seats	5 / 5
Upholstery type	Artificial leather
Colour of upholstery	Brown



Vehicle details

Maintenance booklet / proof	digital proof / complete	Next maintenance in	2,100 km
Last maintenance on / at	02/2024 at 88,641 km		
Key is / should be	2 / 2	FZG documents	ZB#2 (B) was available (copy), ZB#1 (S) was not available
		Letter No.	GF804304
Previous damage / Accident	Detectable	Repainting	Detectable
Inspection conditions	sufficient	Lifting equipment / pit	yes
Test drive	Not performed	Engine function test	Performed
Manufacturer key number/ type code number	2222 / ASV 00053		
Emission standard	EURO6;WLTP;AP;PI/CI; M, N1 I	Fine dust sticker	
Permitted total weight	2,650 kg	Empty weight	

Tyres

Mounted tyres

#	Tyre size	Type of tyre	Manufacturer	Tread depth
1)	235/60 R18 107V	Summer tyres on Light alloy	Continental	6mm / 6mm
2)	235/60 R18 107V	Summer tyres on Light alloy	Continental	6mm / 6mm

Additional tyres

#	Tyre size	Type of tyre	Manufacturer	Tread depth
1)	235/60 R18 107V	Winter tyres on Light alloy	Continental	6mm / 6mm
2)	235/60 R18 107V	Winter tyres on Light alloy	Continental	6mm / 6mm

Legend: Tread depth information for tires on the left is in the first place, for tires on the right is in the second place on the axle in the direction of travel

Equipment

Standard equipment

- Airbag for driver and front passenger
- Airbag: Sidebag for driver and front passenger
- Active Brake Assist
- 4MATIC all-wheel drive
- ATTENTION ASSIST
- Exterior mirrors left and right heated, electrically adjustable from the inside
- Roof rails in polished aluminum
- tachometer
- DYNAMIC SELECT
- Electronic Stability Program (ESP)
- Chassis with higher ground clearance
- Electric parking brake
- Transmission: 9G-TRONIC
- Rear window wiper
- KEYLESS-GO start function
- Remote trunk lid release
- Instrument cluster with 2 tube-shaped round instruments, 13.97 cm (5.5") multifunction display
- 5-way headrests
- Charging system: AC on-board charger (AC charging)
- Steering wheel: 3-spoke multifunction sports steering wheel in black nappa leather
- Steering: Sport Direct-Steer
- Navigation accessories: Advanced functions MBUX
- Package: Interior light
- Upholstery: ARTICO man-made leather/DINAMICA microfiber
- Radio accessories: Touchpad
- Remote Services Plus
- Power steering
- Seats: Folding rear seat backrests
- Seats: Front seats electrically adjustable
- High-visibility vest for drivers
- Central locking
- Airbag: Kneebag for driver
- Airbag: Windowbags
- Acoustic environmental protection
- Anti-lock braking system (ABS)
- Automatic passenger airbag deactivation
- On-board computer
- Brake system with larger brake discs on the front axle
- diesel particulate filter
- Third brake light in LED technology
- EASY-Pack load compartment cover (removable)
- Driving light assistant
- 4-way electric window lifter
- Floor mats in black with AMG lettering
- Rear window heated
- Interior headliner fabric crystal grey
- Climate: THERMATIC automatic climate control with 2 climate zones
- Communication module (LTE) for the use of Mercedes me connect services
- Charging cable for household socket, 5m, smooth
- LED high-performance headlights
- Steering column mechanically adjustable in height and length
- Mercedes-Benz emergency call system
- Package: Storage
- Package: OFF-ROAD Exterior
- Radio: MBUX multimedia system
- Radio accessories: Digital radio
- Tire pressure monitoring (TPMS)
- Windscreen wipers with rain sensor
- Seat: Front sports seats
- Seats: I-Size child restraint system on the outer rear seats
- Cruise control
- Immobiliser
- Decorative elements: piano lacquer look black/aluminium with light longitudinal grain

Extra equipment

- Trailer hitch with ESP trailer stabilization (fully electrically foldable and extendable)
- Chassis: AIR BODY CONTROL air suspension (with continuously adjustable damping)
- Paint finish: designo hyacinth red metallic
- Charging cable for household socket 1-phase, TYPE E/F CEE 7/7 8 m, smooth
- Package: Advanced Light (LED High Performance headlights and adaptive rear lights in LED technology Adaptive High Beam Assistant)
- EASY-Pack tailgate with electric operation for opening and closing
- Climate: THERMOTRONIC automatic climate control with 3 climate zones (The THERMOTRONIC automatic climate control with 3 climate zones and 3 climate styles enables an individualized comfort climate on board. The driver and front passenger can adjust the temperature, air distribution, and climate style according to their personal needs. The third climate zone is located in the rear, with separately adjustable temperature and air flow.)



- Package: Business (for plug-in hybrid vehicles) (Advanced Parking Package: Active Parking Assistant PARKTRONIC with rearview camera; Advanced Infotainment Package: Media display with touch operation, smartphone integration (Apple CarPlay and Android Auto); Connectivity Package (Navigation); Traffic Sign Assistant; Comfort Package: Seat heating for driver and front passenger; Seat Comfort Package (electric and manual adjustment options for the front seats); Public Charging Package)
- Upholstery: ARTICO two-tone leather man-made
- Decorative elements: Black open-pore ash wood / light longitudinally ground aluminum
- Package: High-End Assistance (Mirror package: Electrically folding exterior mirrors, lowerable right exterior mirror, automatic dimming function. Driving Assistance package: Active Distance Assist DISTRONIC, Active Steering Assist, Active Brake Assist, Evasive Steering Assist, Active Lane Keeping Assist, Active Blind Spot Assist, PRE-SAFE PLUS)
- Package: High End Infotainment D3I
- Panoramic sunroof
- Heat and sound-insulating acoustic glass (The heat and sound-insulating acoustic glass for the front side windows offers you greater noise comfort.)

Brief expert findings

Documents submitted	At the time of the inspection, the registration certificate Part 2 (letter) was available, but the registration certificate Part 1 (certificate) was not. (Copy)
VIN comparison	The vehicle identification number (VIN) was read from the vehicle and its conformity with the submitted documents was verified during the inspection by the undersigned.
Inspection	The inspection conditions were sufficient for the assessment of the vehicle. Lifting equipment and a pit were available for examining the vehicle.
Test drive	No test drive/maneuvering was carried out during the inspection of the vehicle.
Engine function test	An engine test run was performed.

Value reducing factors

No.	Component group	Description
1	Boot lid / rear door	Boot lid - dent(s) - Smooth repair work
2	Bonnet	Bonnet - dent(s) - Smooth repair work
3	Door - rear right side	Door - Scratch(es) - Smart repair
4	Rear bumper	Rear bumper - Scratch(es) - Smart repair

Previous damages

No.	Previous damage	Extent of damage (Net)
1	Rear, Provided by user / customer, from 14 Jul 2023	541,94 €
2	Side - left, Provided by user / customer, from 29 Sept 2022	3.355,75 €

Repainting

No.	Repainting
1	Mudguard - right side, Professionally carried out, Invoice of repair done Non-existent
2	Door - rear right side, Professionally carried out, Invoice of repair done Non-existent
3	Door - front right side, Professionally carried out, Invoice of repair done Non-existent

Paint coat thickness measurement

Mudguard - right side	157 µm	Door - rear right side	150 µm
Door - front right side	202 µm		



Order/Scope of order

The order was placed to prepare a sales report for the vehicle described. This includes the following:

- Description of core relevant information about the vehicle
- Documentation of equipment features
(Delivery by third-party service providers)
- Documentation of damage, defects, missing parts
- Documentation of previous damage, unrepaired previous damage, repainting
- a brief visual or functional inspection of the equipment details if possible.
(Functional tests of driver assistance systems are not included in the scope of services!)
- a photo documentation of the vehicle

Basis for the order

This product is based on the Alphabet Fuhrpark GmbH guidelines for vehicle returns and valuations. The expert makes the explicit findings in each individual case objectively within the framework of the specified standards based on his or her own expertise.

The vehicle inspection takes place in a disassembled state.

Damage or defects that can only be detected during disassembly/diagnosis work or through advanced knowledge remain within the scope of the prognosis risk. An extended risk exists for concealed defects caused by fraudulent deception and not identifiable by the expert.

Damage or defects resulting from normal use or wear and tear of the vehicle will be accepted according to the applicable standard.

There was no explicit identification or monetary consideration of the expected features within the product.

Features which in their nature and severity slightly exceed normal use but do not constitute unacceptable damage will be documented and identified under signs of use if necessary.

Damage or defects which, according to the underlying standard, can no longer be attributed to normal use or wear and tear are listed in the product under "Depreciating Factors".

Depending on the product specification, a monetary ID can be provided. If this takes place, the costs can be 100% d or pro rata depending on the vehicle's age and mileage.

Previous damages

According to available information previous damages were repaired at the vehicle. Traces of repairs, which allow conclusions about the area of repair, were not recognizable during the inspection.

Comments

- Winterradsatz ist kein Bestandteil des Auslieferumfangs



Figure 1: Diagonal front (left)



Figure 2: Diagonal front (right)



Figure 3: Diagonal rear (left)



Figure 4: Diagonal rear (right)



Figure 5: Interior - front



Figure 6: Interior - rear



Figure 7: Instrument cluster



Figure 8: Instrument panel



Figure 9: interior 360° view ([Online link](#))



Figure 10: Cargo area



Figure 11: VIN



Figure 12: Mounted tyres



Figure 13: Documents



Figure 14: Documents



Figure 15: Additional tyres



Figure 16: Navigation



Figure 17: Misc.



Figure 18: Misc.



Figure 19: Misc.



Figure 20: Misc.



Figure 21: Misc.



Figure 22: Misc.



Figure 23: Misc.

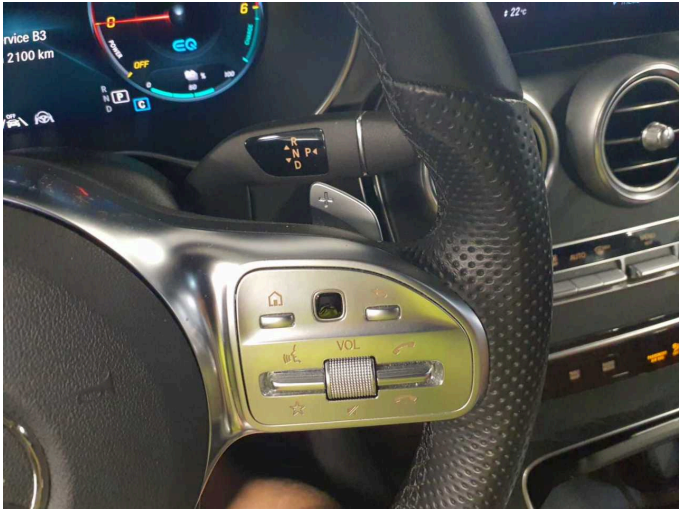


Figure 24: Misc.



Figure 25: Misc.

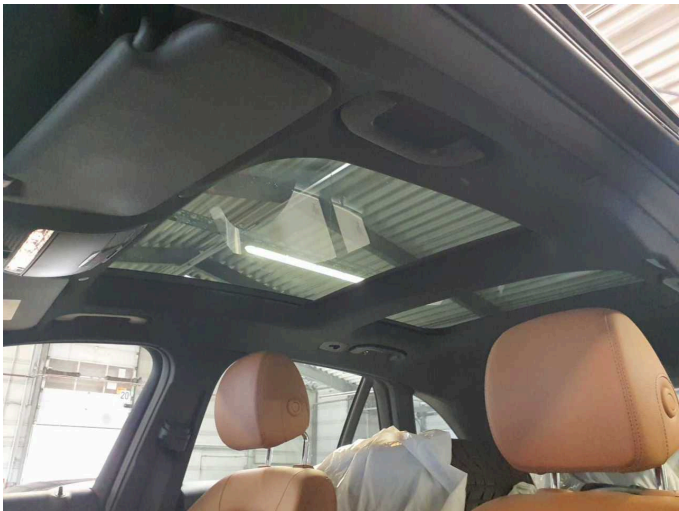


Figure 26: Misc.



Figure 27: Misc.



Figure 28: Misc.



Figure 29: Misc.



Figure 30: Misc.



Figure 31: Misc.

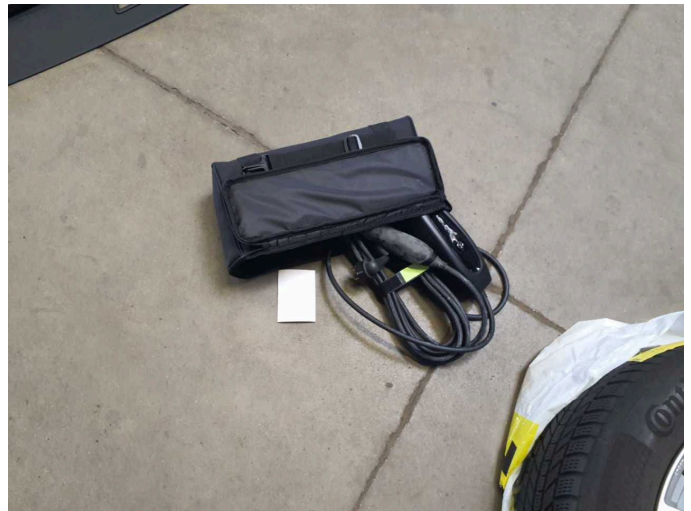


Figure 32: Misc.



Figure 33: Misc.

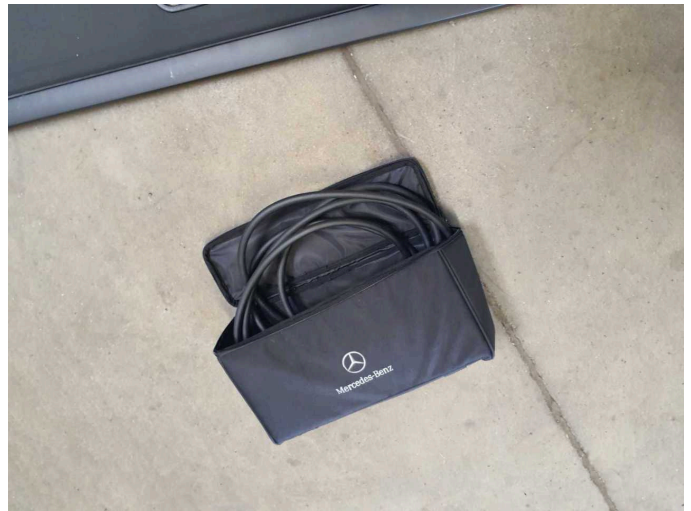
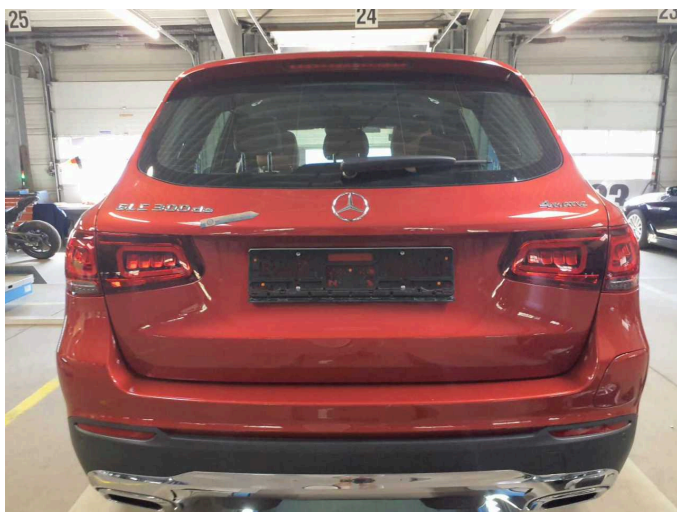
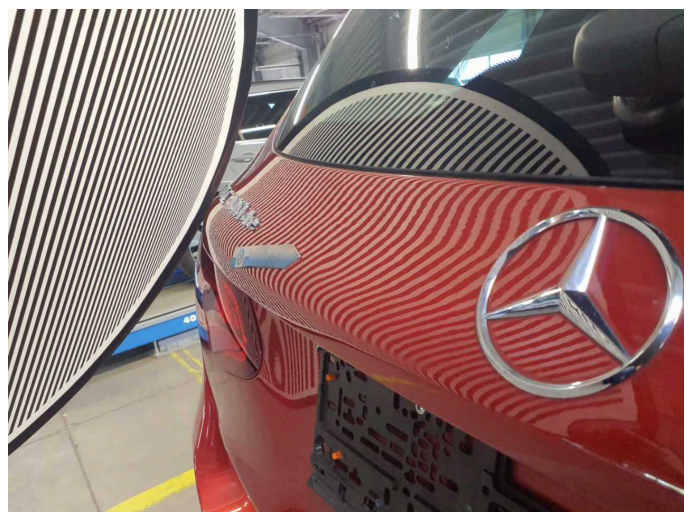


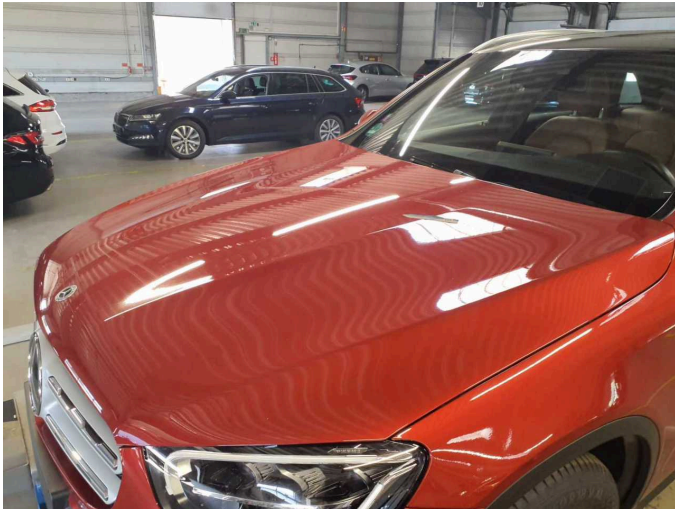
Figure 34: Misc.



Damage 1: Boot lid / rear door: Boot lid - dent(s) - Smooth repair work



Damage 1: Boot lid / rear door: Boot lid - dent(s) - Smooth repair work



Damage 2: Bonnet: Bonnet - dent(s) - Smooth repair work



Damage 2: Bonnet: Bonnet - dent(s) - Smooth repair work



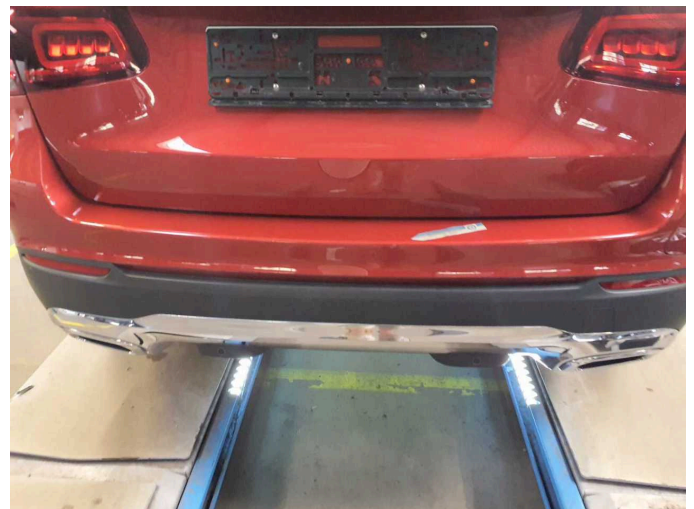
Damage 2: Bonnet: Bonnet - dent(s) - Smooth repair work



Damage 3: Door - rear right side: Door - Scratch(es) - Smart repair



Damage 3: Door - rear right side: Door - Scratch(es) - Smart repair



Damage 4: Rear bumper: Rear bumper - Scratch(es) - Smart repair



Damage 4: Rear bumper: Rear bumper - Scratch(es) - Smart repair



Repainting 1: Mudguard - right side



Repainting 1: Mudguard - right side



Repainting 2: Door - rear right side



Repainting 2: Door - rear right side



Repainting 3: Door - front right side



Repainting 3: Door - front right side



Wartungshistorie

(gemäß Auftraggeber Informationen)

Fahrgestellnummer: W1N2539111V367588

Hersteller / Modell: MERCEDES-BENZ MB GLC 300 de 4Matic 9G-TRONIC AMG Line

Datum	KM-Stand	Beschreibung
14.03.2025	76.068	HU + AU
17.12.2024	68.641	Regelwartungsdienst
05.04.2024	41.874	Regelwartungsdienst
10.04.2023	21.074	Regelwartungsdienst