



Expertise

Protocol number: 41684834
Order No. / Reference: 25145741
Inspection date: 24 Sept 2025

Manufacturer: Mercedes-Benz

Model: GLC 300 de 4Matic 9G-TRONIC

VIN: W1N2539111V319788



Vehicle details	
Manufacturer / Type / Model / Equipment	
Mercedes-Benz GLC 300 de 4Matic 9G-TRONIC	
Vehicle Identification number	W1N2539111V319788
Mileage (Read)	63,385 km
First registration	2 Sept 2021
Number of holders	1
Next periodical technical inspection	09/2026
(Report on hand)	
Power / Engine displacement	143 kw / 1,950 ccm
Fuel type / Cylinder	Hybr.D/E ext. edition / 4
Gearbox / Number of gears	Automatic / 9
Type of drive	All-wheel drive
Type of vehicle	SUV
Colour / colour code	SCHWARZ
Doors / Seats	5 / 5
Upholstery type	Artificial leather
Colour of upholstery	Black
Re/Import	no
Driving readiness	Roadworthy



Vehicle details

Maintenance booklet / proof	digital proof / complete	Next maintenance in	69 Tag(e)
Last maintenance on / at	12/2024 at 49,531 km		
Key is / should be	2 / 2	FZG documents	ZB#2 (B) was available (copy), ZB#1 (S) was not available
		Letter No.	GC643649
Previous damage / Accident	Detectable	Repainting	None detectable
Inspection conditions	sufficient	Lifting equipment / pit	yes
Test drive	Not performed	Engine function test	Performed
Driving readiness	Roadworthy		
Manufacturer key number/ type code number	2222 / ASV 00037		
Emission standard	EURO6;WLTP;AP;PI/CI; M, N1 I	Fine dust sticker	
Permitted total weight	2,650 kg	Empty weight	

Tyres

Mounted tyres

#	Tyre size	Type of tyre	Manufacturer	Tread depth
1)	235/60 R18 103V	Summer tyres on Light alloy	Bridgestone	5mm / 5mm
2)	235/60 R18 103V	Summer tyres on Light alloy	Bridgestone	5mm / 5mm

Additional tyres

#	Tyre size	Type of tyre	Manufacturer	Tread depth
1)	235/60 R18 107H	Winter tyres on Light alloy	Continental	6mm / 6mm
2)	235/60 R18 107H	Winter tyres on Light alloy	Continental	6mm / 6mm

Legend: Tread depth information for tires on the left is in the first place, for tires on the right is in the second place on the axle in the direction of travel

Equipment

Standard equipment

- | | |
|---|--|
| <ul style="list-style-type: none"> • Airbag for driver and front passenger • Airbag: Sidebag for driver and front passenger • Active Brake Assist • 4MATIC all-wheel drive • ATTENTION ASSIST • Exterior mirrors left and right heated, electrically adjustable from the inside • Roof rails in polished aluminum • tachometer • DYNAMIC SELECT • Electronic Stability Program (ESP) • Chassis with higher ground clearance • Electric parking brake • Transmission: 9G-TRONIC • Rear window wiper • KEYLESS-GO start function • Remote trunk lid release • Instrument cluster with 2 tube-shaped round instruments, 13.97 cm (5.5") multifunction display • 5-way headrests • Charging system: AC on-board charger (AC charging) • Steering wheel: Multifunction sports steering wheel in 3-spoke design in black leather • Mercedes-Benz emergency call system • Package: Storage • Package: Interior light • Radio: MBUX multimedia system • Radio accessories: Touchpad • Remote Services Plus • Windscreen wipers with rain sensor • Seats: Folding rear seat backrests • Seats: Front seats electrically adjustable • High-visibility vest for drivers • Central locking | <ul style="list-style-type: none"> • Airbag: Kneebag for driver • Airbag: Windowbags • Acoustic environmental protection • Anti-lock braking system (ABS) • Automatic passenger airbag deactivation • On-board computer • Brake system with larger brake discs on the front axle • diesel particulate filter • Third brake light in LED technology • EASY-Pack load compartment cover (removable) • Driving light assistant • 4-way electric window lifter • Velour floor mats in interior color • Rear window heated • Interior headliner fabric crystal grey • Climate: THERMATIC automatic climate control with 2 climate zones • Communication module (LTE) for the use of Mercedes me connect services • Charging cable for household socket, 5m, smooth • LED high-performance headlights • Steering column mechanically adjustable in height and length • Navigation accessories: Advanced functions MBUX • Package: Chrome • Upholstery: Aberdeen black fabric • Radio accessories: Digital radio • Tire pressure monitoring (TPMS) • Wheels: 45.7 cm (18") light alloy wheels, 4-spoke design • Power steering • Seats: I-Size child restraint system on the outer rear seats • Cruise control • Immobiliser • Decorative elements: piano lacquer look in high-gloss black |
|---|--|

Extra equipment

- | | |
|--|--|
| <ul style="list-style-type: none"> • Airbag: Sidebags in the rear left and right • KEYLESS-GO (Your KEYLESS-GO vehicle key can stay in your pocket; you don't have to pick it up. Thanks to the stored access and driving authorization, the vehicle recognizes its owner. Grasp the door handle, open it, get in, and drive off—KEYLESS-GO is a convenient experience every time.) • Steering wheel: heated steering wheel | <ul style="list-style-type: none"> • EASY-Pack tailgate with electric operation for opening and closing • Paintwork: Special paintwork Uni • Charging cable for industrial socket 1-phase, IEC 60309 CEE 16/3 8 m, smooth • Charging cable for wallboxes and public charging stations, 5 m, smooth (This charging cable, also called a Mode 3 cable, allows you to charge your vehicle battery at a wallbox or public charging station with up to 7.4 kW (Type 2, 3-phase, 20 A).) |
|--|--|



- Navigation accessories: Live Traffic Information pre-installation (With Live Traffic Information, your navigation system receives real-time traffic data and optimizes dynamic route guidance. Accurate and up-to-date information on traffic jams, stop-and-go traffic, and more helps you reduce travel times.)
- Package: Advanced Comfort (Seat heating for driver and front passenger, driver's seat electrically adjustable with memory function, front seat right electrically adjustable with memory function)
- Package: High-End Infotainment (Media display with touchscreen operation, Smartphone integration: Apple CarPlay and Android Auto, Navigation connectivity package, Traffic Sign Assistant: thanks to intelligent integration of camera and map data, it can detect not only speed limits, overtaking bans and their cancellation, but also fully digital instrument display, and wireless charging system for mobile devices in the dashboard compartment.)
- Package: High-End Lighting (MULTIBEAM LED: The adaptive MULTIBEAM LED headlights react to the traffic situation with individually controllable LEDs. The partial high beam avoids other road users without dazzling them. The ULTRA RANGE high beam increases the range to the maximum permitted. The cornering and curve lights also optimally illuminate the field of vision.)
- Remote and Charging Services Plus (The Remote and Charging Services Plus package connects you to your vehicle. You can locate it and control selected functions remotely if desired. With Mercedes me Charge, you can charge at many public charging stations with maximum cost transparency. You only need to register once and receive a central bill.)
- Heat-insulating dark tinted glass all around from B-pillar
- Decorative elements: Black open-pore ash wood
- Package: Advanced Assistance (Mirror package: Electrically folding exterior mirrors, lowerable right exterior mirror, automatic dimming function Lane package: Active Lane Keeping Assist, Blind Spot Assist, Active Distance Assist DISTRONIC)
- Package: Advanced Park (Parking package with rear view camera Active Parking Assist with PARKTRONIC)
- Package: Business (for plug-in hybrid vehicles) (Advanced Parking Package: Active Parking Assistant PARKTRONIC with rearview camera; Advanced Infotainment Package: Media display with touch operation, smartphone integration (Apple CarPlay and Android Auto); Connectivity Package (Navigation); Traffic Sign Assistant; Comfort Package: Seat heating for driver and front passenger; Seat Comfort Package (electric and manual adjustment options for the front seats); Public Charging Package)
- Package: Mirrors (Electrically folding exterior mirrors, lowerable right exterior mirrors with automatic dimming function)
- Panoramic sunroof
- Upholstery: ARTICO man-made leather
- PRE-SAFE system (as preventive occupant protection)
- Radio accessories: MBUX Interior Assistant (This innovative system detects and interprets your hand and arm movements. You can activate selected functions in a flash. The system can distinguish between driver and passenger, allowing you to access the exact menus you want to use.)
- Heat and sound-insulating acoustic glass (The heat and sound-insulating acoustic glass for the front side windows offers you greater noise comfort.)

Brief expert findings

Documents submitted	At the time of the inspection, the registration certificate Part 2 (letter) was available, but the registration certificate Part 1 (certificate) was not. (Copy)
VIN comparison	The vehicle identification number (VIN) was read from the vehicle and its conformity with the submitted documents was verified during the inspection by the undersigned.
Inspection	The inspection conditions were sufficient for the assessment of the vehicle. Lifting equipment and a pit were available for examining the vehicle.
Test drive	No test drive/maneuvering was carried out during the inspection of the vehicle.
Engine function test	An engine test run was performed.
Driving readiness	The vehicle was drivable at the time of inspection.

Value reducing factors

No.	Component group	Description
1	Front bumper	Front bumper - Scratch(es) - Smart repair
2	Door - front left side	Door - Scratch(es) - Repair and paint

Wear and tear



No.	Component group	Description
1	Bonnet	Bonnet - Stone chips - No deduction
2	Vehicle glazing	Windscreen - Stone chips - No deduction
3	Rear bumper	Rear bumper - Scratch(es) - No deduction
4	Interior	Interior - Scratch(es) - No deduction

The vehicle shows signs of wear commensurate with its age and use.

Previous damages

No.	Previous damage	Extent of damage (Net)
1	Side - left, Provided by user / customer, from 8 Nov 2022	947,25 €

Order/Scope of order

The order was placed to prepare a sales report for the vehicle described. This includes the following:

- Description of core relevant information about the vehicle
- Documentation of equipment features
(*Delivery by third-party service providers*)
- Documentation of damage, defects, missing parts
- Documentation of previous damage, unrepaired previous damage, repainting
- a brief visual or functional inspection of the equipment details if possible.
(*Functional tests of driver assistance systems are not included in the scope of services!*)
- a photo documentation of the vehicle

Basis for the order

This product is based on the Alphabet Fuhrpark GmbH guidelines for vehicle returns and valuations. The expert makes the explicit findings in each individual case objectively within the framework of the specified standards based on his or her own expertise.

The vehicle inspection takes place in a disassembled state.

Damage or defects that can only be detected during disassembly/diagnosis work or through advanced knowledge remain within the scope of the prognosis risk. An extended risk exists for concealed defects caused by fraudulent deception and not identifiable by the expert.

Damage or defects resulting from normal use or wear and tear of the vehicle will be accepted according to the applicable standard.

There was no explicit identification or monetary consideration of the expected features within the product.

Features which in their nature and severity slightly exceed normal use but do not constitute unacceptable damage will be documented and identified under signs of use if necessary.

Damage or defects which, according to the underlying standard, can no longer be attributed to normal use or wear and tear are listed in the product under "Depreciating Factors".

Depending on the product specification, a monetary ID can be provided. If this takes place, the costs can be 100% d or pro rata depending on the vehicle's age and mileage.

Previous damages

According to available information previous damages were repaired at the vehicle. Traces of repairs, which allow conclusions about the area of repair, were not recognizable during the inspection.

Comments

- Winterradsatz ist kein Bestandteil des Auslieferumfangs.



Figure 1: Diagonal front (left)



Figure 2: Diagonal front (right)



Figure 3: Diagonal rear (left)



Figure 4: Diagonal rear (right)



Figure 5: Interior - front



Figure 6: Interior - rear



Figure 7: Instrument cluster



Figure 8: Instrument panel



Figure 9: Interior 360° view



Figure 10: Cargo area

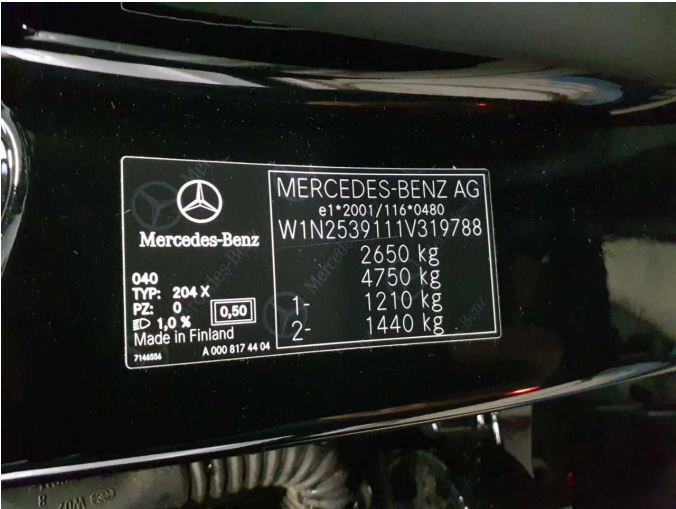


Figure 11: VIN



Figure 12: Mounted tyres



Figure 13: Documents

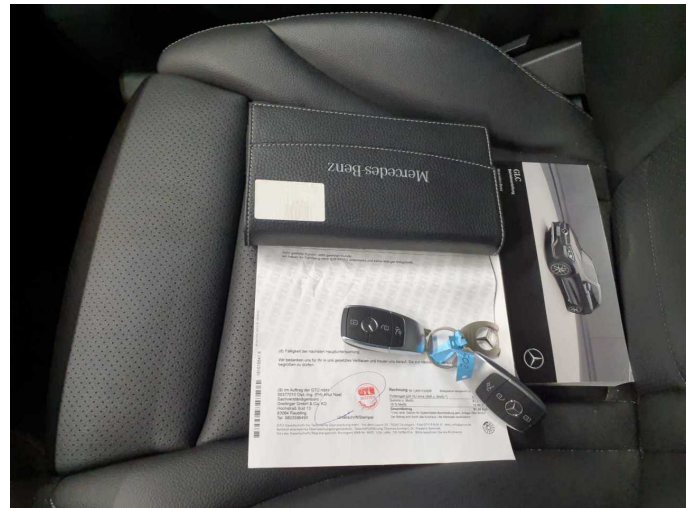


Figure 14: Documents

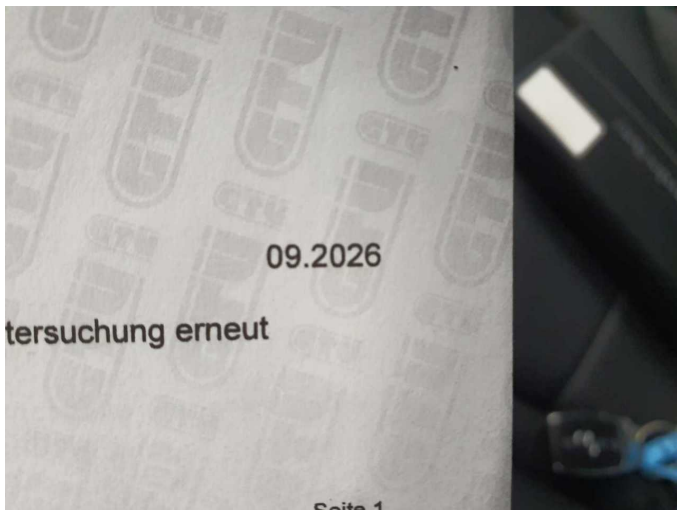


Figure 15: Documents

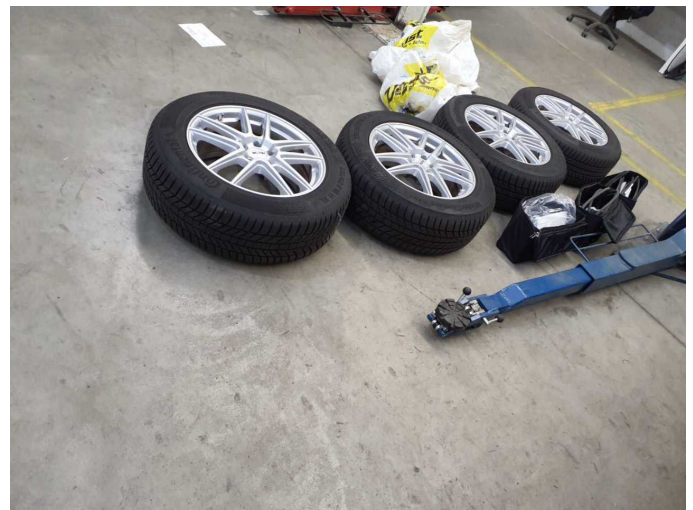


Figure 16: Additional tyres

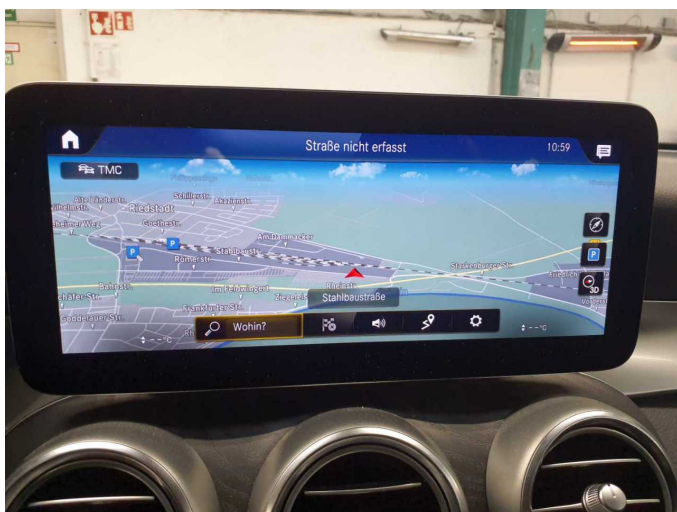


Figure 17: Navigation



Figure 18: Misc.

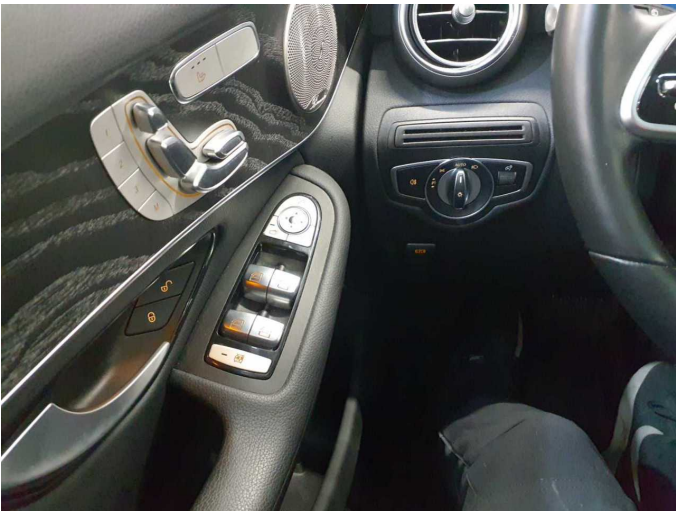


Figure 19: Misc.



Figure 20: Misc.



Figure 21: Misc.



Figure 22: Misc.

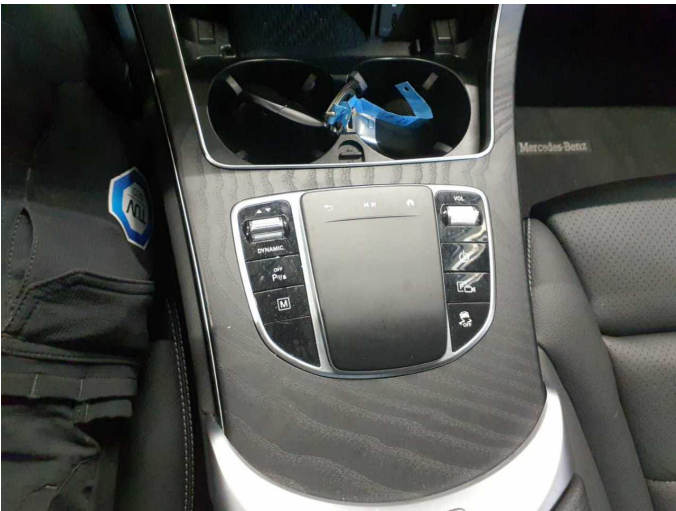


Figure 23: Misc.



Figure 24: Misc.



Figure 25: Misc.



Figure 26: Misc.



Figure 27: Misc.



Figure 28: Misc.



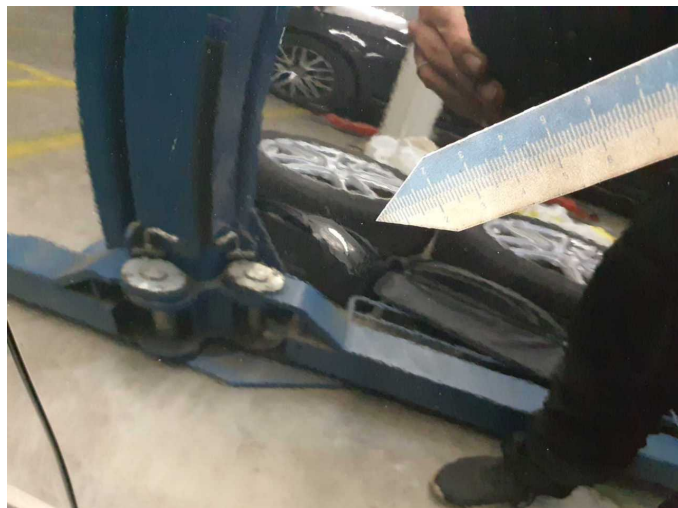
Figure 29: Misc.



Damage 1: Front bumper: Front bumper - Scratch(es) - Smart repair



Damage 1: Front bumper: Front bumper - Scratch(es) - Smart repair



Damage 2: Door - front left side: Door - Scratch(es) - Repair and paint



Damage 2: Door - front left side: Door - Scratch(es) - Repair and paint



Wartungshistorie

(gemäß Auftraggeber Informationen)

Fahrgestellnummer: W1N253911V319788

Hersteller / Modell: MERCEDES-BENZ MB GLC 300 de 4Matic 9G-TRONIC

Datum	KM-Stand	Beschreibung
02.12.2024	49.531	Regelwartungsdienst
24.09.2024	46.971	AU
16.10.2023	27.832	Regelwartungsdienst
20.09.2022	11.005	Regelwartungsdienst