



MERCEDES GLC - X253 2019 Diesel
GLC 300 de phEV (eq-power) Sport 4matic
auto

VIN NO W1N2539111V314841
Registration Number GG876RV



MOT Date



Last Service



Number of Owners



Last Service Mileage



Number of Keys



First Registration Date



2021-09-09

Odometer Reading



80349 km

Country First Registered



Italy

Inspection Report Summary

Customer	BCA Lodi	Report Number	P20250919163553
Inspection Date / Place	2025-09-19 / BCA Lodi	Cosmetic Grade	3

Vehicle Summary

Vehicle Condition	Runner	VAT Type	Qualified
Fuel Type	Hybrid	Gearbox Type	Sequential
Colour	Black	Engine Size (cc)	1950
Engine Size	2.0	No of Doors	5
Body Type	SUV	Drive Train	All-Wheel-Drive
Seat Colour	Black	No of Seats	5
Seat Covering Name		Seat Covering	Cloth
Charging Cables		NEDC CO2 Rating (q/km)	45

Vehicle History & Documents

Service Book Available	-	Next Service Mileage	km
Previous Usage	Normal Use	Imported	No
Manufacturer Warrenty			







Equipment

Central locking	Rain sensitive windscreen wipers	LED Headlamps	Digital Radio
Front parking sensors	Volante multifunction	Remote adjusting wing mirrors	Cruise control
Trip Computer	Stability control	Power assisted steering	Rear parking sensors
Alloys wheels	Electrically folding wing mirrors	Satellite navigation	Parcel Shef
Remote central locking	Traction control	Tyre Mobility Kit	

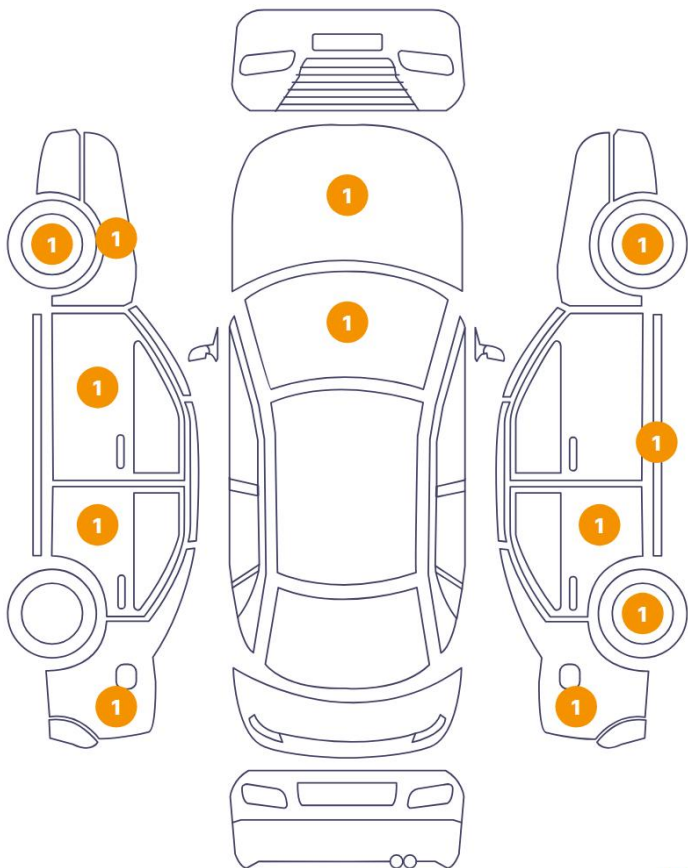
Wheels & Tyres

Mounted Tires

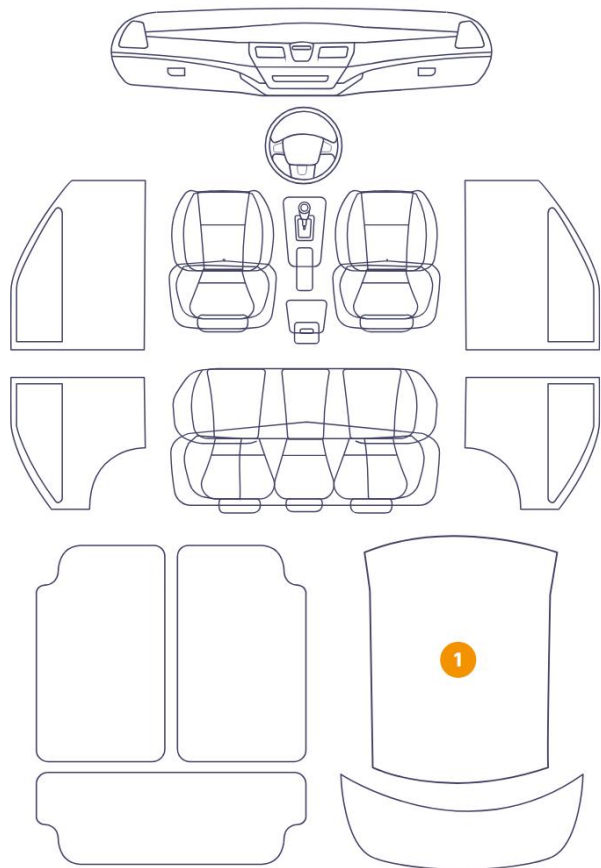
Tyre / Wheel Type	Summer	
	BRIDGESTONE	235/55//R19 - 101V / 2 mm
	BRIDGESTONE	235/55//R19 - 101V / 2 mm
	BRIDGESTONE	235/55//R19 - 101V / 1 mm
	BRIDGESTONE	235/55//R19 - 101V / 1 mm

Cosmetic Damage

13 Danni



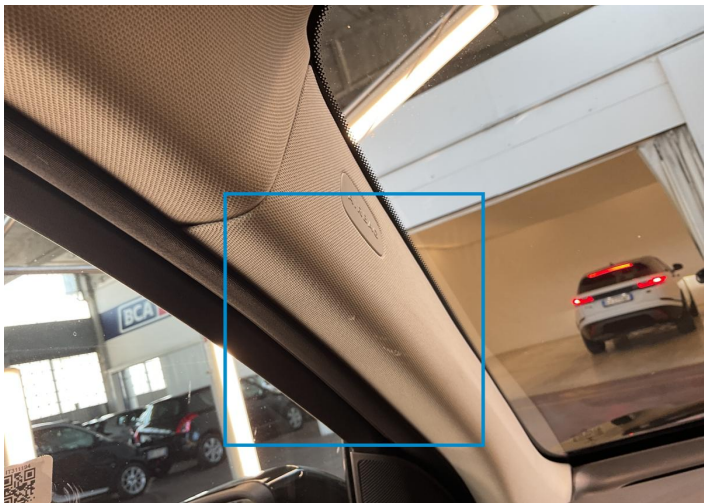
1 Danni



Component		Damage	Comments
1	Roof Upholstery	Interior / Worn - out	
2	Rim / Front Left	Out of Bodywork / Scratch	
3	Fender / Front Left	Paint / Chipping	
4	Door / Front Left	Bodywork / Poor Previous Repair	
5	Door / Back Left	Bodywork / Poor Previous Repair	
6	Fender / Back Left	Bodywork / Poor Previous Repair	
7	Fender / Back Right	Bodywork / Poor Previous Repair	
8	Door / Back Right	Bodywork / Poor Previous Repair	
9	Rim / Front Right	Out of Bodywork / Scratch	
10	Rim / Back Right	Out of Bodywork / Scratch	
11	Rocker Panel / Center Right	Paint / Scratch / Line	
12	Hood	Bodywork / Poor Previous Repair	

13	Other	Bodywork / Poor Previous Repair
----	-------	---------------------------------

14	Windshield / Front	Glass Break
----	--------------------	-------------



1. Roof Upholstery
Interior / Worn - out -



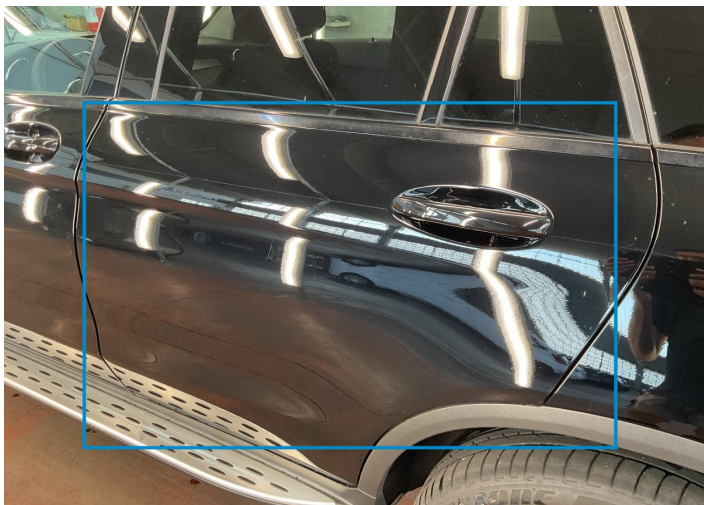
2. Rim / Front Left
Out of Bodywork / Scratch -



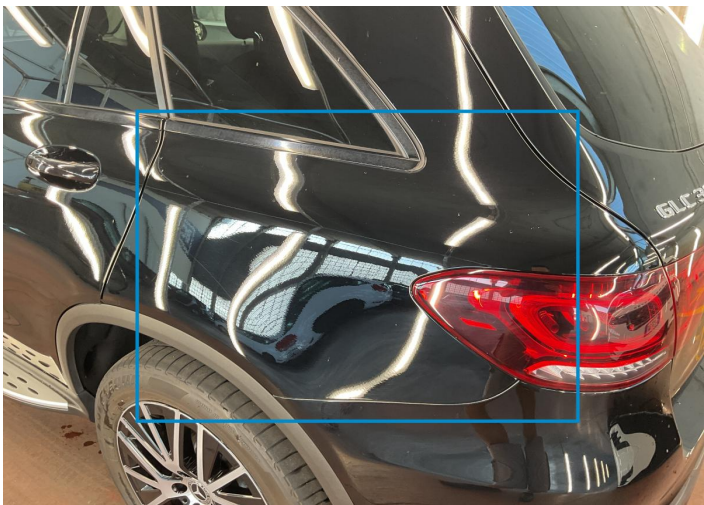
3. Fender / Front Left
Paint / Chipping -



4. Door / Front Left
Bodywork / Poor Previous Repair -



5. Door / Back Left
Bodywork / Poor Previous Repair -



6. Fender / Back Left
Bodywork / Poor Previous Repair -



7. Fender / Back Right
Bodywork / Poor Previous Repair -



8. Door / Back Right
Bodywork / Poor Previous Repair -



9. Rim / Front Right
Out of Bodywork / Scratch -



10. Rim / Back Right
Out of Bodywork / Scratch -



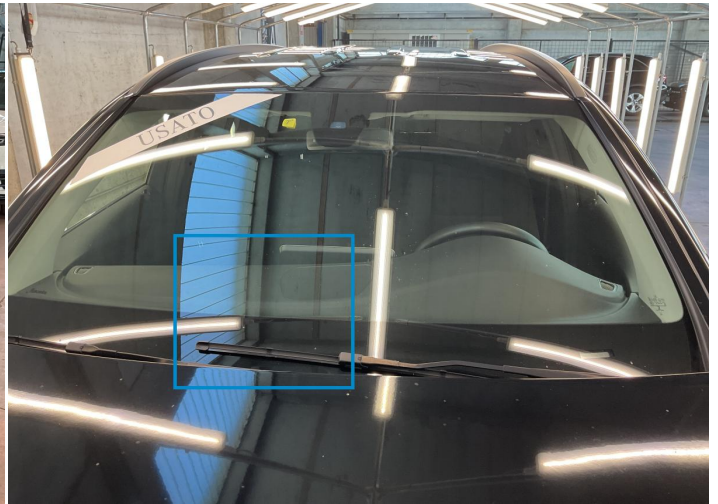
11. Rocker Panel / Center Right
Paint / Scratch / Line -



12. Hood
Bodywork / Poor Previous Repair -



13.
Bodywork / Poor Previous Repair -



14. Windshield / Front
Glass Break -

Mechanical Condition

Engine			
Vehicle Start - up	✓	Engine Starts	✓
Engine Leak Visible	✓		
Clutch			
Clutch Functioning	✓		
Equipments Test			
Other Equipments	✓	AC / Heating System	✓
Hybrid/EV			
Hybrid System Fault	✓		
Levels			
Brakes Fluid	✓	Coolant Fluid	✓

Test Drive Inspection

Other Checks			
Brakes	✓	Steering	✓
Suspension	✓		
General			
Test Driven Status	✓		
Equipments Test			
Steering Noise / Anomaly	✓		
Engine			
Power Loss	✓	Fume Quantity	✓
Engine Noise	✓		
Gearbox			
Manual Gearbox	✓		

✓ No troubles detected, good condition or correct tests, according to vehicle age and mileage

! Damages or malfunction detected that requires repairs by the buyer

NA Not applicable

☐ *Not tested*