



MERCEDES-BENZ GLC
GLC 300 de 4Matic 9G-TRONIC

VIN NO W1N2539111V299011
Registration Number 111V299011



MOT Date	Number of Owners	Number of Keys	Odometer Reading
2026-04-01	1	2	102898 km
Last Service	Last Service Mileage	First Registration Date	Country First Registered
-	-	2021-04-20	Germany

Inspection Report Summary

Customer	BCA Online	Report Number	P20250530150419
Inspection Date / Place	2025-05-30 / BCA Neuss	Cosmetic Grade	3

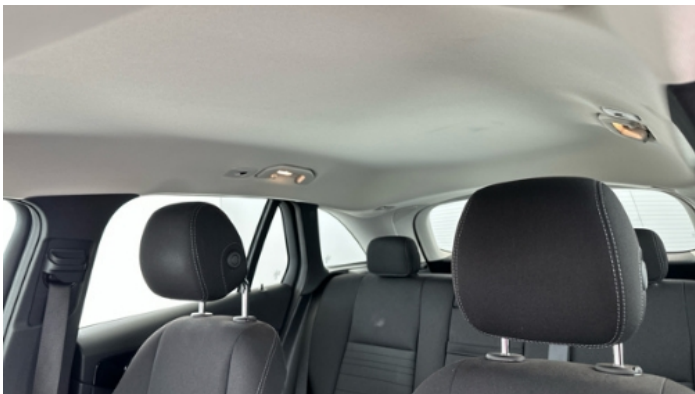
Vehicle Summary

Vehicle Condition	Runner	VAT Type	Qualifying
Fuel Type	Plug - in Hybrid Electric Vehicle Diesel	Road Worthy	Yes
Colour	Black	Engine Size (cc)	1950
Engine Size	2.0	No of Doors	5
Body Type	SUV	Drive Train	All-Wheel-Drive permanent
Seat Colour		No of Seats	5
Seat Covering Name	Schwarz	Seat Covering	Cloth
Charging Cables	Type 2	NEDC CO2 Rating (q/km)	45
Gearbox Type	Automatic		

Vehicle History & Documents

Service Book Available	Missing	Next Service Mileage	km
Previous Usage		Imported	No
Manufacturer Warrenty			







Equipment

Tow ball	Airbag Status	Anti-lock braking	Cruise control
Digital Radio	Remote adjusting wing mirrors	Roof rails	Stability control
Electric tailgate	LED Headlamps	Rear parking sensors	USB Socket
Alloys wheels	Bluetooth telephone interface	Diesel particulate filter	Front parking sensors
Remote central locking	Satellite navigation	Electrically folding wing mirrors	Leather steering wheel

Radio

Equipment Details

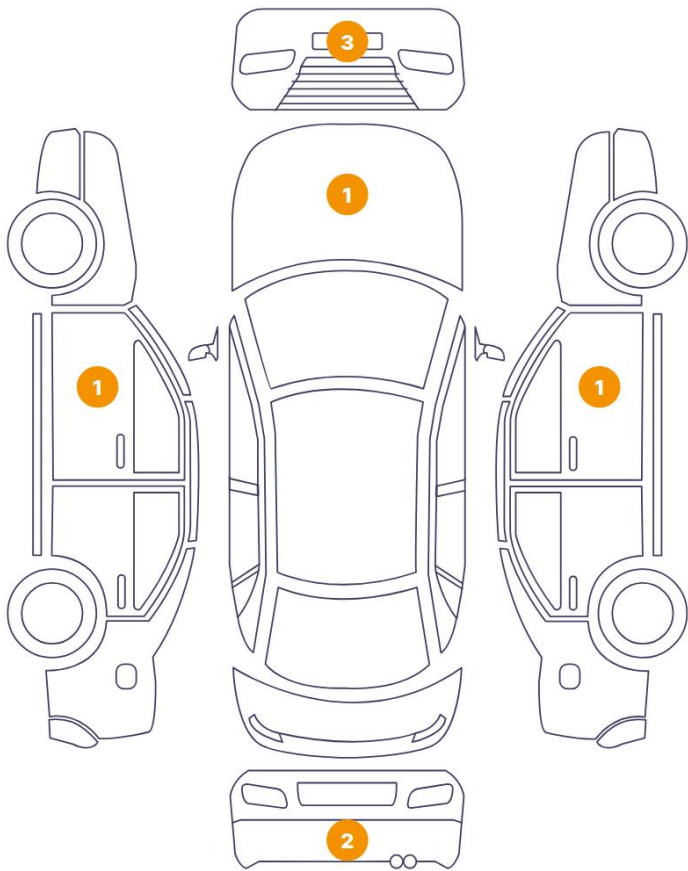
Tow Ball Type	Electronic	Air Conditioning	Dual Zone Climate Control
Alloy Wheel Size	18	Seat Heating	Front

Wheels & Tyres

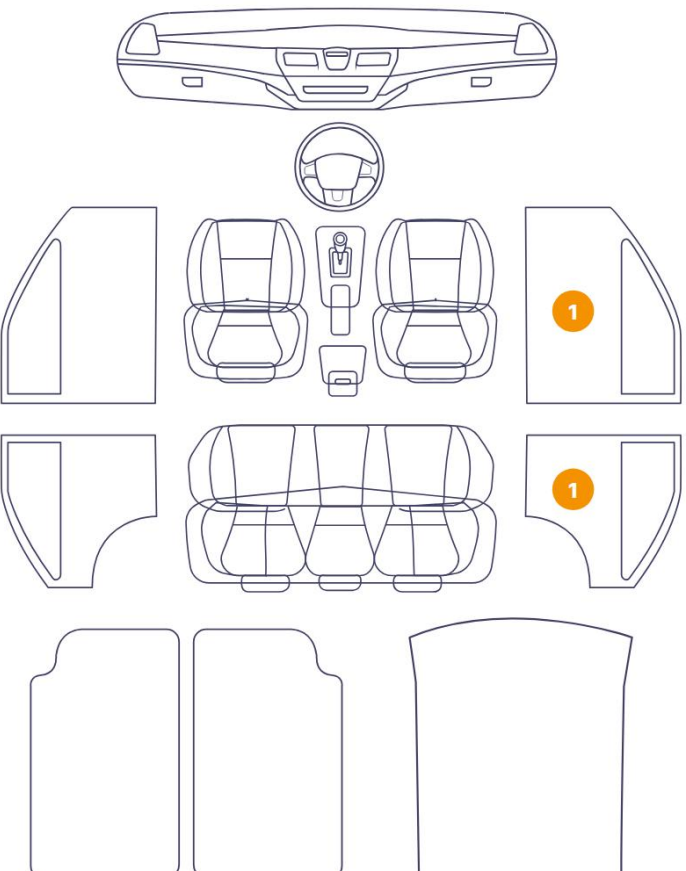
Right Front Tyre Depth	6	Left Front Tyre Depth	6
Right Rear Tyre Depth	6	Left Rear Tyre Depth	6

Cosmetic Damage

8 Damages



3 Damages



Component		Damage	Comments
1	Hood	Paint / Stone Chip	
2	Bumper / Front	Paint / Scratch / Scuff	
3	Bumper / Front	Paint / Scratch / Scuff	
4	Bumper / Front	Paint / Stone Chip	
5	Door / Front Left	Bodywork / Dent / Dent	
6	Bumper / Back	Paint / Scratch / Scuff	
7	Bumper / Back	Paint / Scratch / Scuff	
8	Tailgate Upholstery / Back	Interior / Scraped	
9	Panel Filling / Back Right	Interior / Scraped	
10	Door / Front Right	Paint / Scratch / Scuff	
11	Panel Filling / Front Right	Interior / Scraped	



1. Hood
Paint / Stone Chip -



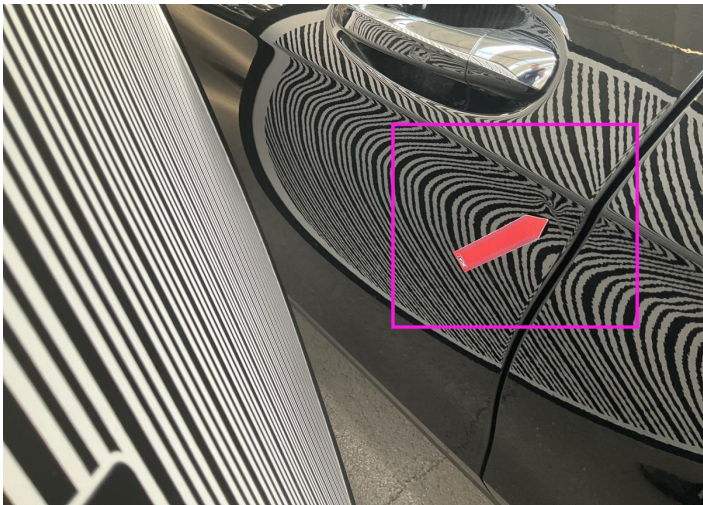
2. Bumper / Front
Paint / Scratch / Scuff -



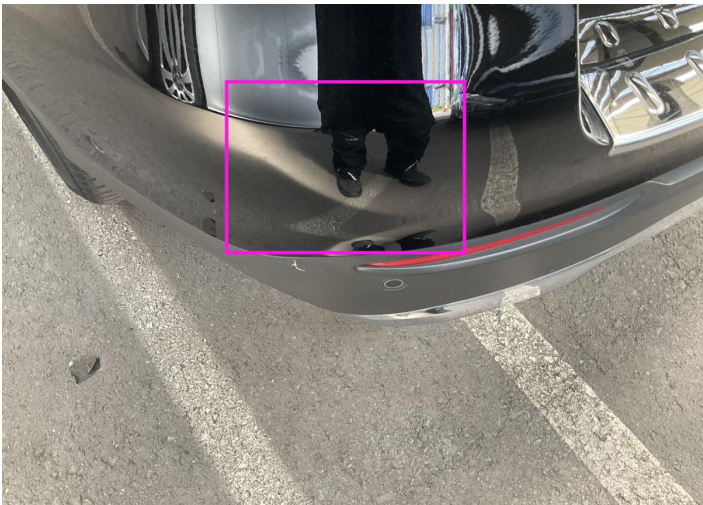
3. Bumper / Front
Paint / Scratch / Scuff -



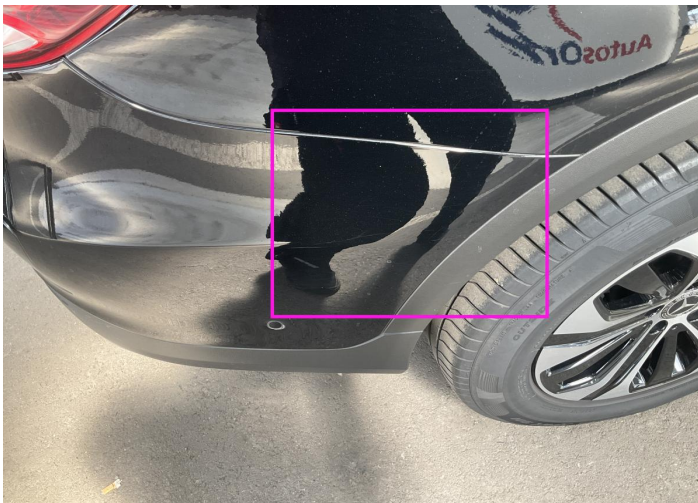
4. Bumper / Front
Paint / Stone Chip -



5. Door / Front Left
Bodywork / Dent / Dent -



6. Bumper / Back
Paint / Scratch / Scuff -



7. Bumper / Back
Paint / Scratch / Scuff -



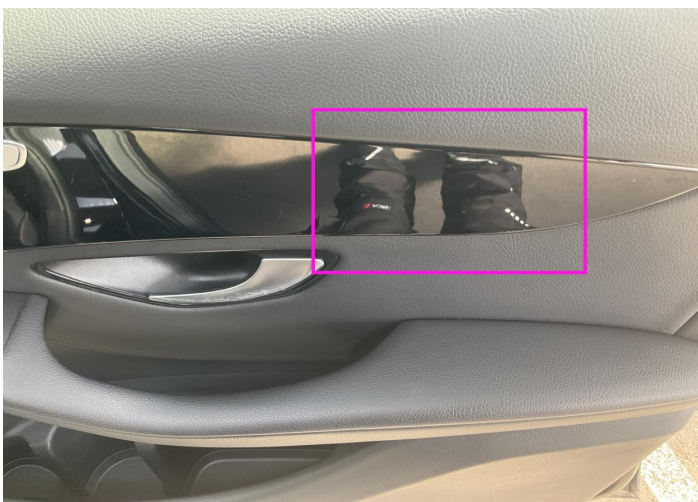
8. Tailgate Upholstery / Back
Interior / Scraped -



9. Panel Filling / Back Right
Interior / Scraped -



10. Door / Front Right
Paint / Scratch / Scuff -



11. Panel Filling / Front Right
Interior / Scraped -

Mechanical Condition

Control Lights

Display Defect	✓	Service Light	✓
ABS Warning Light	✓	ESP Fault/Traction Control Malfunction Light	✓
Diesel Particulate Filter Light	✓	Airbag Warning Light	✓
Oil Pressure Warning Light	✓	Brake Warning Light	✓
Power Steering Warning Light	✓	Alternator / Battery	✓
No Dashboard Lights	✓	Tire Pressure Monitoring System	✓

Equipments Test

Central Locking	✓	Main & Spare Keys Functioning	✓
Electric Windows	✓	Navigation System	✓
Audio Equipment	✓	Parking Sensors / Cameras Functioning	✓
AC / Heating System	✓	Other Equipments	✓

Engine

Engine Status / EML	✓	Engine Leak Visible	✓
Engine Starts	✓		

Gearbox

Gear Box	✓
----------	---

Hybrid/EV

Charge Lead Condition	✓	Charge Port Condition	✓
Hybrid System Fault	✓		

Levels

Coolant Fluid	✓	Brakes Fluid	NA
---------------	---	--------------	----

Test Drive Inspection

Engine			
Engine Noise	✓	The Gears Scratch / Skip / Abnormal Operation	✓
Fume Quantity	✓	Power Loss	✓
Steering Wheel			
Steering Noise / Anomaly	✓		
Brake			
Brake System Anomaly	✓		
General			
Test Driven Status	✓		
✓ No troubles detected, good condition or correct tests, according to vehicle age and mileage			
! Damages or malfunction detected that requires repairs by the buyer			
NA Not applicable			
☐ Not tested			

Disclaimer

Please also note the "UserGuide condition report", which shows the scope of the vehicle description.

[User Guide](#)