



Expertise

Protocol number: 41450937
Order No. / Reference: 25158958
Inspection date: 9 Sept 2025

Manufacturer: Mercedes-Benz

Model: GLC 300 de 4Matic 9G-TRONIC AMG Line

VIN: W1N2539111V294271



Vehicle details	
Manufacturer / Type / Model / Equipment	
Mercedes-Benz GLC 300 de 4Matic 9G-TRONIC AMG Line	
Vehicle Identification number	W1N2539111V294271
Mileage (Read)	63,057 km
First registration	13 Apr 2021
Number of holders	1
Next periodical technical inspection	04/2026
(Report on hand)	
Power / Engine displacement	143 kw / 1,950 ccm
Fuel type / Cylinder	Hybr.D/E ext. edition / 4
Gearbox / Number of gears	Automatic / 9
Type of drive	All-wheel drive
Type of vehicle	SUV
Colour / colour code	GRAPHITGRAU - METALLICLACK
Doors / Seats	5 / 5
Upholstery type	Leather
Colour of upholstery	Black
Vehicle with smoke odor	no
Driving readiness	Roadworthy



Vehicle details

Maintenance booklet / proof	digital proof / complete	Next maintenance in	275 Tag(e)
Last maintenance on / at	05/2025 at 58,424 km		
Key is / should be	2 / 2	FZG documents	ZB#2 (B) was available (copy), ZB#1 (S) was not available
		Letter No.	GA351065
Previous damage / Accident	Detectable	Repainting	None detectable
Inspection conditions	sufficient	Lifting equipment / pit	yes
Test drive	Not performed	Engine function test	Performed
Driving readiness	Roadworthy		
Manufacturer key number/ type code number	2222 / ASV 00039		
Emission standard	EURO6;WLTP;AP;PI/CI; M, N1 I	Fine dust sticker	
Permitted total weight	2,650 kg	Empty weight	

Tyres

Mounted tyres

#	Tyre size	Type of tyre	Manufacturer	Tread depth
1)	255/45 R20 105Y	Summer tyres on Light alloy	Michelin	5mm / 5mm
2)	285/40 R20 108Y	Summer tyres on Light alloy	Michelin	5mm / 5mm

Additional tyres

#	Tyre size	Type of tyre	Manufacturer	Tread depth
1)	235/60 R18 107H	Winter tyres on Light alloy	Pirelli	5mm / 5mm
2)	235/60 R18 107H	Winter tyres on Light alloy	Pirelli	6mm / 6mm

Legend: Tread depth information for tires on the left is in the first place, for tires on the right is in the second place on the axle in the direction of travel

Equipment

Standard equipment

- Airbag for driver and front passenger
- Airbag: Sidebag for driver and front passenger
- Active Brake Assist
- 4MATIC all-wheel drive
- ATTENTION ASSIST
- Exterior mirrors left and right heated, electrically adjustable from the inside
- Roof rails in polished aluminum
- tachometer
- DYNAMIC SELECT
- Electronic Stability Program (ESP)
- Chassis with higher ground clearance
- Electric parking brake
- Transmission: 9G-TRONIC
- Rear window wiper
- KEYLESS-GO start function
- Remote trunk lid release
- Instrument cluster with 2 tube-shaped round instruments, 13.97 cm (5.5") multifunction display
- 5-way headrests
- Charging system: AC on-board charger (AC charging)
- Steering wheel: 3-spoke multifunction sports steering wheel in black nappa leather
- Steering: Sport Direct-Steer
- Navigation accessories: Advanced functions MBUX
- Package: Interior light
- Upholstery: ARTICO man-made leather/DINAMICA microfiber
- Radio accessories: Touchpad
- Remote Services Plus
- Power steering
- Seats: Folding rear seat backrests
- Seats: Front seats electrically adjustable
- High-visibility vest for drivers
- Central locking
- Airbag: Kneebag for driver
- Airbag: Windowbags
- Acoustic environmental protection
- Anti-lock braking system (ABS)
- Automatic passenger airbag deactivation
- On-board computer
- Brake system with larger brake discs on the front axle
- diesel particulate filter
- Third brake light in LED technology
- EASY-Pack load compartment cover (removable)
- Driving light assistant
- 4-way electric window lifter
- Floor mats in black with AMG lettering
- Rear window heated
- Interior headliner fabric black
- Climate: THERMATIC automatic climate control with 2 climate zones
- Communication module (LTE) for the use of Mercedes me connect services
- Paint finish: Uni
- LED high-performance headlights
- Steering column mechanically adjustable in height and length
- Mercedes-Benz emergency call system
- Package: Storage
- Package: OFF-ROAD Exterior
- Radio: MBUX multimedia system
- Radio accessories: Digital radio
- Tire pressure monitoring (TPMS)
- Windscreen wipers with rain sensor
- Seat: Front sports seats
- Seats: I-Size child restraint system on the outer rear seats
- Cruise control
- Immobiliser
- Decorative elements: piano lacquer look black/aluminium with light longitudinal grain

Extra equipment

- Airbag: Sidebags in the rear left and right
- Charging cable for household sockets, 5 m, smooth (This charging cable, also called a Mode 2 cable, allows you to charge your vehicle battery from a household socket with up to 2.3 kW (230 V, 1-phase, 10 A) and is compatible with type E/F CEE 7/7 sockets.)
- Navigation accessories: Live Traffic Information pre-installation (With Live Traffic Information, your navigation system receives real-time traffic data and optimizes dynamic route guidance. Accurate and up-to-date information on traffic jams, stop-and-go traffic, and more helps you reduce travel times.)
- Paint finish: metallic
- Charging cable for wallboxes and public charging stations, 5 m, smooth (This charging cable, also called a Mode 3 cable, allows you to charge your vehicle battery at a wallbox or public charging station with up to 7.4 kW (Type 2, 3-phase, 20 A).)
- Package: Advanced Infotainment (Media display with touchscreen operation, Smartphone integration: Apple CarPlay and Android Auto, Connectivity package, Navigation, Traffic Sign Assistant: Thanks to the intelligent combination of camera and map data, it can not only detect speed limits, overtaking bans, and their cancellation, but also display no-entry zones and warn you of wrong-way entry.)



- Package: Advanced Park (Parking package with rear view camera Active Parking Assist with PARKTRONIC)
- Package: AMG Line Exterior (Plug-in Hybrid) (AMG styling, consisting of an AMG front apron with sporty air intakes and chrome trim, an AMG rear apron in a diffuser look with a black insert, a diamond grille with chrome pins, an integrated Mercedes star, and a matt iridium silver louvre with chrome inserts, 48.3 cm (19") AMG 5-twin-spoke alloy wheels, painted in tremolite gray with a high-sheen finish, tires 235/55 R19 on 8 J x 19 ET 38, and two visible tailpipe trims integrated into the bumper)
- Package: Comfort (Seat heating for driver and front passenger, electric and manual adjustment options for driver and front passenger seats, electro-pneumatic 4-way lumbar support and lateral support adjustment with control element on the seat, electric seat cushion tilt adjustment, electric height adjustment, electric backrest adjustment, mechanical seat cushion depth adjustment by 6 cm with leg rest pad, mechanical length adjustment, mechanical headrest adjustment)
- Remote and Charging Services Plus (The Remote and Charging Services Plus package connects you to your vehicle. You can locate it and control selected functions remotely if desired. With Mercedes me Charge, you can charge at many public charging stations with maximum cost transparency. You only need to register once and receive a central bill.)
- Partition net for luggage compartment separation (and occupant protection)
- Package: Assistance (Mirror package: Electrically folding exterior mirrors, lowerable right exterior mirror, automatic dimming function Lane package: Active Lane Keeping Assist, Blind Spot Assist)
- Package: Business (for plug-in hybrid vehicles) (Advanced Parking Package: Active Parking Assistant PARKTRONIC with rearview camera; Advanced Infotainment Package: Media display with touch operation, smartphone integration - Apple CarPlay and Android Auto; Connectivity Package Navigation; Traffic Sign Assistant; Comfort Package: Seat heating for driver and front passenger; Seat Comfort Package - electric and manual adjustment options for the front seats)
- Package: Public Charging (includes the Mercedes me Charge service and the Mode 3 charging cable)
- Radio accessories: Advanced Sound System (9 speakers and 225 watts of system power. The sound system also enhances your driving pleasure acoustically. The speaker system, precisely tuned to the interior, offers dynamic music playback.)
- Wheels: 50.8 cm (20") AMG light-alloy wheels, 4-spoke, 5-twin-spoke design (painted titanium grey with a high-sheen finish, front axle 255/45 R 20 on 8.5 J x 20 ET 40 and rear axle 285/40 R 20 on 9.5 J x 20 ET 22)
- TIREFIT with tire inflation compressor
- Heat-insulating dark tinted glass all around from B-pillar
- Decorative elements: Black open-pore ash wood

Brief expert findings

Documents submitted	At the time of the inspection, the registration certificate Part 2 (letter) was available, but the registration certificate Part 1 (certificate) was not. (Copy)
VIN comparison	The vehicle identification number (VIN) was read from the vehicle and its conformity with the submitted documents was verified during the inspection by the undersigned.
Inspection	The inspection conditions were sufficient for the assessment of the vehicle. Lifting equipment and a pit were available for examining the vehicle.
Test drive	No test drive/maneuvering was carried out during the inspection of the vehicle.
Engine function test	An engine test run was performed.
Driving readiness	The vehicle was drivable at the time of inspection.

Value reducing factors

No.	Component group	Description
1	Door - rear right side	Door - Scratch(es) - Smart repair
2	Wheel / tyres	Alloy rim - front right side - Scratch(es) - Loss in value
3	Boot lid / rear door	Boot lid - Scratch(es) - Paint

Wear and tear

No.	Component group	Description
1	Bonnet	Bonnet - Stone chips - No deduction
2	Vehicle glazing	Windscreen - Stone chips - No deduction



No.	Component group	Description
3	Interior	Interior - Soiled - No deduction
4	Rear bumper	Rear bumper - Scratch(es) - No deduction

The vehicle shows signs of wear commensurate with its age and use.

Previous damages

No.	Previous damage	Extent of damage (Net)
1	Side - left, Provided by user / customer, from 2 Mar 2024	4.970,99 €

Order/Scope of order

The order was placed to prepare a sales report for the vehicle described. This includes the following:

- Description of core relevant information about the vehicle
- Documentation of equipment features
(*Delivery by third-party service providers*)
- Documentation of damage, defects, missing parts
- Documentation of previous damage, unrepaired previous damage, repainting
- a brief visual or functional inspection of the equipment details if possible.
(*Functional tests of driver assistance systems are not included in the scope of services!*)
- a photo documentation of the vehicle

Basis for the order

This product is based on the Alphabet Fuhrpark GmbH guidelines for vehicle returns and valuations. The expert makes the explicit findings in each individual case objectively within the framework of the specified standards based on his or her own expertise.

The vehicle inspection takes place in a disassembled state.

Damage or defects that can only be detected during disassembly/diagnosis work or through advanced knowledge remain within the scope of the prognosis risk. An extended risk exists for concealed defects caused by fraudulent deception and not identifiable by the expert.

Damage or defects resulting from normal use or wear and tear of the vehicle will be accepted according to the applicable standard.

There was no explicit identification or monetary consideration of the expected features within the product.

Features which in their nature and severity slightly exceed normal use but do not constitute unacceptable damage will be documented and identified under signs of use if necessary.

Damage or defects which, according to the underlying standard, can no longer be attributed to normal use or wear and tear are listed in the product under "Depreciating Factors".

Depending on the product specification, a monetary ID can be provided. If this takes place, the costs can be 100% d or pro rata depending on the vehicle's age and mileage.

Previous damages

According to available information previous damages were repaired at the vehicle. Traces of repairs, which allow conclusions about the area of repair, were not recognizable during the inspection.

Comments

- Winterradsatz ist kein Bestandteil des Auslieferumfangs.



Figure 1: Diagonal front (left)



Figure 2: Diagonal front (right)



Figure 3: Diagonal rear (left)



Figure 4: Diagonal rear (right)



Figure 5: Interior - front



Figure 6: Interior - rear



Figure 7: Instrument cluster



Figure 8: Instrument panel



Figure 9: Interior 360° view ([Online link](#))



Figure 10: Cargo area



Figure 11: VIN



Figure 12: Mounted tyres



Figure 13: Documents



Figure 14: Documents



Figure 15: Documents



Figure 16: Additional tyres



Figure 17: Navigation



Figure 18: Misc.



Figure 19: Misc.



Figure 20: Misc.



Figure 21: Misc.



Figure 22: Misc.



Figure 23: Misc.



Figure 24: Misc.



Figure 25: Misc.



Figure 26: Misc.

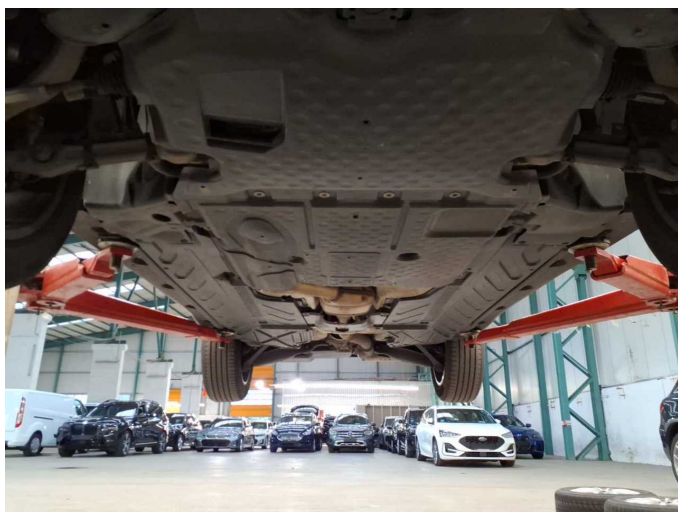


Figure 27: Misc.

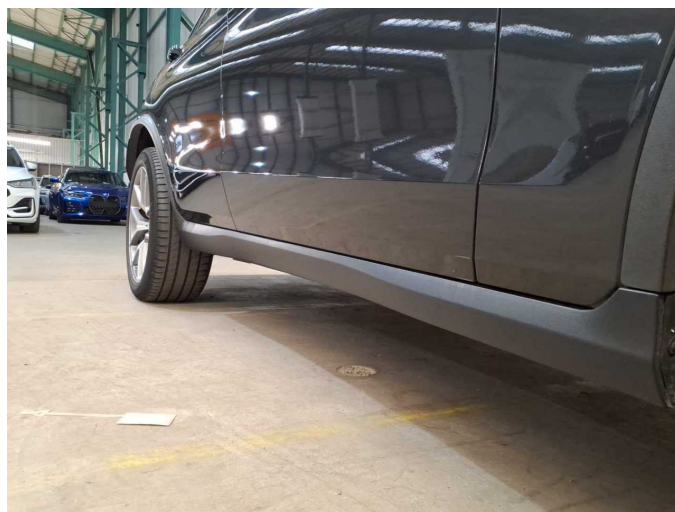


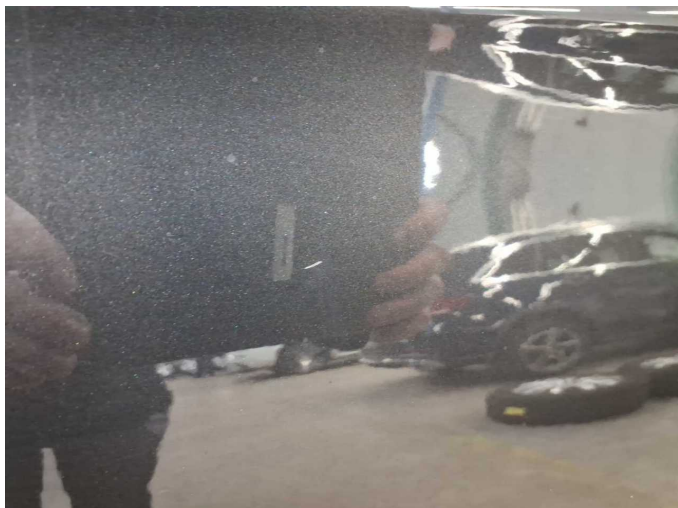
Figure 28: Misc.



Figure 29: Misc.



Damage 1: Door - rear right side: Door - Scratch(es) - Smart repair



Damage 1: Door - rear right side: Door - Scratch(es) - Smart repair



Damage 2: Wheel / tyres: Alloy rim - front right side - Scratch(es) - Loss in value



Damage 2: Wheel / tyres: Alloy rim - front right side - Scratch(es) - Loss in value



Damage 3: Boot lid / rear door: Boot lid - Scratch(es) - Paint



Damage 3: Boot lid / rear door: Boot lid - Scratch(es) - Paint