



Expertise

Protocol number: 41226456
Order No. / Reference: 25118716
Inspection date: 26 Aug 2025

Manufacturer: Mercedes-Benz	Model: GLC 300 de 4Matic 9G-TRONIC AMG Line
VIN: W1N2539111F995415	



Vehicle details	
Manufacturer / Type / Model / Equipment	
Mercedes-Benz GLC 300 de 4Matic 9G-TRONIC AMG Line	
Vehicle Identification number	W1N2539111F995415
Mileage (Read)	194,657 km
First registration	18 Aug 2021
Number of holders	1
Power / Engine displacement	143 kw / 1,950 ccm
Fuel type / Cylinder	Hybr.D/E ext. edition / 4
Gearbox / Number of gears	Automatic / 9
Type of drive	All-wheel drive
Type of vehicle	SUV
Colour / colour code	OBSIDIANSCHWARZ - METALLICLACK
Doors / Seats	5 / 5
Upholstery type	Alcantara / Leather
Colour of upholstery	Black



Vehicle details

Maintenance booklet / proof	digital proof / complete	Next maintenance in	16,600 km
Last maintenance on / at	06/2025 at 186,247 km		
Key is / should be	2 / 2	FZG documents	ZB#2 (B) was available (copy), ZB#1 (S) was not available
		Letter No.	GF691552
Previous damage / Accident	Detectable	Repainting	Detectable
Inspection conditions	sufficient	Lifting equipment / pit	yes
Test drive	Not performed	Engine function test	Performed
Manufacturer key number/ type code number	2222 / ASV 00037		
Emission standard	EURO6;WLTP;AP;PI/CI; M, N1 I	Fine dust sticker	
Permitted total weight	2,650 kg	Empty weight	

Tyres

Mounted tyres

#	Tyre size	Type of tyre	Manufacturer	Tread depth
1)	255/45 R20 101W	Summer tires (with run-flat tires) on Light alloy	Bridgestone	6mm / 6mm
2)	255/45 R20 101W	Summer tires (with run-flat tires) on Light alloy	Bridgestone	5mm / 5mm

Additional tyres

#	Tyre size	Type of tyre	Manufacturer	Tread depth
1)	235/55 R19 101H	Winter tires (with run-flat tires) on Light alloy	Pirelli	7mm / 7mm
2)	235/55 R19 101H	Winter tires (with run-flat tires) on Light alloy	Pirelli	7mm / 7mm

Legend: Tread depth information for tires on the left is in the first place, for tires on the right is in the second place on the axle in the direction of travel



Equipment

Standard equipment

- Airbag for driver and front passenger
- Airbag: Sidebag for driver and front passenger
- Active Brake Assist
- 4MATIC all-wheel drive
- ATTENTION ASSIST
- Exterior mirrors left and right heated, electrically adjustable from the inside
- Roof rails in polished aluminum
- tachometer
- DYNAMIC SELECT
- Electronic Stability Program (ESP)
- Chassis with higher ground clearance
- Electric parking brake
- Transmission: 9G-TRONIC
- Rear window wiper
- KEYLESS-GO start function
- Remote trunk lid release
- Instrument cluster with 2 tube-shaped round instruments, 13.97 cm (5.5") multifunction display
- 5-way headrests
- Charging system: AC on-board charger (AC charging)
- Steering wheel: 3-spoke multifunction sports steering wheel in black nappa leather
- Steering: Sport Direct-Steer
- Navigation accessories: Advanced functions MBUX
- Package: Interior light
- Radio: MBUX multimedia system
- Radio accessories: Digital radio
- Tire pressure monitoring (TPMS)
- Windscreen wipers with rain sensor
- Seat: Front sports seats
- Seats: I-Size child restraint system on the outer rear seats
- Cruise control
- Immobiliser
- Airbag: Kneebag for driver
- Airbag: Windowbags
- Acoustic environmental protection
- Anti-lock braking system (ABS)
- Automatic passenger airbag deactivation
- On-board computer
- Brake system with larger brake discs on the front axle
- diesel particulate filter
- Third brake light in LED technology
- EASY-Pack load compartment cover (removable)
- Driving light assistant
- 4-way electric window lifter
- Floor mats in black with AMG lettering
- Rear window heated
- Interior headliner fabric crystal grey
- Climate: THERMATIC automatic climate control with 2 climate zones
- Communication module (LTE) for the use of Mercedes me connect services
- Charging cable for household socket, 5m, smooth
- LED high-performance headlights
- Steering column mechanically adjustable in height and length
- Mercedes-Benz emergency call system
- Package: Storage
- Upholstery: ARTICO man-made leather/DINAMICA microfiber
- Radio accessories: Touchpad
- Remote Services Plus
- Power steering
- Seats: Folding rear seat backrests
- Seats: Front seats electrically adjustable
- High-visibility vest for drivers
- Central locking

Extra equipment

- Ambient lighting (Design the interior according to your personal preferences or current mood. With a total of 64 colors, the ambient lighting offers almost unlimited lighting possibilities and has the right color for every situation. Illuminated door sills on the driver and passenger sides.)
- Paint finish: metallic
- Navigation accessories: Live Traffic Information pre-installation (With Live Traffic Information, your navigation system receives real-time traffic data and optimizes dynamic route guidance. Accurate and up-to-date information on traffic jams, stop-and-go traffic, and more helps you reduce travel times.)
- Trailer hitch with ESP trailer stabilization (fully electrically foldable and extendable)
- EASY-Pack tailgate with electric operation for opening and closing
- Interior headliner fabric black
- Charging cable for wallboxes and public charging stations, 8 m, smooth (This charging cable, also called a Mode 3 cable, allows you to charge your vehicle battery at a wallbox or public charging station with up to 7.4 kW (Type 2, 3-phase, 20 A).)
- Package: Advanced Park (Parking package with rear view camera Active Parking Assistant with PARKTRONIC)



- Package: Business (for plug-in hybrid vehicles) (Advanced Parking Package: Active Parking Assistant PARKTRONIC with rearview camera; Advanced Infotainment Package: Media display with touch operation, smartphone integration (Apple CarPlay and Android Auto); Connectivity Package (Navigation); Traffic Sign Assistant; Comfort Package: Seat heating for driver and front passenger; Seat Comfort Package (electric and manual adjustment options for the front seats); Public Charging Package)
- Package: Night for AMG Line Exterior (radiator grille with diamond grille with silver-colored pins and louvers in high-gloss black, 48.3 cm (19") AMG 5-spoke light-alloy wheels painted high-gloss black with a high-sheen finish with 235/55 R 19 on 8 J x 19 ET 38, roof rails in black, underbody protection painted black at the front and rear, exterior mirror housings painted high-gloss black, beltline trim strip and window surrounds in high-gloss black, heat-insulating, dark-tinted glass at the rear from the B-pillar)
- Radio accessories: Burmester surround sound system
- Wheels: 50.8 cm (20") AMG light alloy wheels 4-way in multi-spoke design (high-gloss black painted and high-sheen with 255/45 R20 on 8.5 J x20 ET 40)
- Wheels: Tires with emergency running properties (instead of TIREFIT tire sealant)
- Wheels: Summer complete wheels fitted ex works
- Wheels: Winter complete wheels LM 10-spoke design 19"
- Package: High-End Assistance (Mirror package: Electrically folding exterior mirrors, lowerable right exterior mirror, automatic dimming function. Driving Assistance package: Active Distance Assist DISTRONIC, Active Steering Assist, Active Brake Assist, Evasive Steering Assist, Active Lane Keeping Assist, Active Blind Spot Assist, PRE-SAFE PLUS)
- Package: Comfort (Seat heating for driver and front passenger, electric and manual adjustment options for driver and front passenger seats, electro-pneumatic 4-way lumbar support and lateral support adjustment with control element on the seat, electric seat cushion tilt adjustment, electric height adjustment, electric backrest adjustment, mechanical seat cushion depth adjustment by 6 cm with leg rest pad, mechanical length adjustment, mechanical headrest adjustment)
- Package: Mirrors (Electrically folding exterior mirrors, lowerable right exterior mirrors with automatic dimming function)
- Remote and Charging Services Plus (The Remote and Charging Services Plus package connects you to your vehicle. You can locate it and control selected functions remotely if desired. With Mercedes me Charge, you can charge at many public charging stations with maximum cost transparency. You only need to register once and receive a central bill.)
- Decorative elements: Black open-pore ash wood

Brief expert findings

Documents submitted	At the time of the inspection, the registration certificate Part 2 (letter) was available, but the registration certificate Part 1 (certificate) was not. (Copy)
VIN comparison	The vehicle identification number (VIN) was read from the vehicle and its conformity with the submitted documents was verified during the inspection by the undersigned.
Inspection	The inspection conditions were sufficient for the assessment of the vehicle. Lifting equipment and a pit were available for examining the vehicle.
Test drive	No test drive/maneuvering was carried out during the inspection of the vehicle.
Engine function test	An engine test run was performed.

Value reducing factors

No.	Component group	Description
1	Front bumper	Cover bumper - front - Scratched - Replace
2	Wheel / tyres	Alloy rim - rear right side - Scratch(es) - Loss in value
3	Body	A-pillar - left side (Klarlack abplatzer) - Paint defect - Repair and paint
4	Side panel - rear left side	Side panel (Kratzer an einer fläche (Kreisförmig)) - Scratched - Repair and paint
5	Door - rear left side	Door - Dent / paintcoat damage - Repair and paint

Wear and tear

No.	Component group	Description
1	Wing mirror - left side	Cap - Scratch(es) - No deduction
2	Bonnet	Bonnet - Stone chips - No deduction
3	Front bumper	Bumper - front right side (Unfallschaden vorn links) - Scratched - No deduction



No.	Component group	Description
4	Side panel - rear right side	Sill - dent(s) - No deduction
5	Rear bumper	Rear bumper - Scratch(es) - No deduction
6	2nd wheel set	1 alloy rim - Scratch(es) - No deduction
7	Boot lid / rear door	Boot lid - dent(s) - No deduction

The vehicle shows signs of wear commensurate with its age and use.

Previous damages

No.	Previous damage	Extent of damage (Net)
1	Rear, Provided by user / customer, from 18 Apr 2023	1.740,22 €

Accident damages

No.	Accident
1	Front, Side - left

Repainting

No.	Repainting
1	Side panel - rear left side, Professionally carried out, Invoice of repair done Non-existent

Paint coat thickness measurement

Side panel - rear left side	162 µm
-----------------------------	--------

Order/Scope of order

The order was placed to prepare a sales report for the vehicle described. This includes the following:

- Description of core relevant information about the vehicle
- Documentation of equipment features
(Delivery by third-party service providers)
- Documentation of damage, defects, missing parts
- Documentation of previous damage, unrepaired previous damage, repainting
- a brief visual or functional inspection of the equipment details if possible.
(Functional tests of driver assistance systems are not included in the scope of services!)
- a photo documentation of the vehicle



Basis for the order

This product is based on the Alphabet Fuhrpark GmbH guidelines for vehicle returns and valuations. The expert makes the explicit findings in each individual case objectively within the framework of the specified standards based on his or her own expertise.

The vehicle inspection takes place in a disassembled state.

Damage or defects that can only be detected during disassembly/diagnosis work or through advanced knowledge remain within the scope of the prognosis risk. An extended risk exists for concealed defects caused by fraudulent deception and not identifiable by the expert.

Damage or defects resulting from normal use or wear and tear of the vehicle will be accepted according to the applicable standard.

There was no explicit identification or monetary consideration of the expected features within the product.

Features which in their nature and severity slightly exceed normal use but do not constitute unacceptable damage will be documented and identified under signs of use if necessary.

Damage or defects which, according to the underlying standard, can no longer be attributed to normal use or wear and tear are listed in the product under "Depreciating Factors".

Depending on the product specification, a monetary ID can be provided. If this takes place, the costs can be 100% d or pro rata depending on the vehicle's age and mileage.

Previous damages

Non-repaired previous damages were found at the vehicle. The necessary repair costs are listed in the expert report or if necessary, are listed in detail in a separately enclosed repair cost calculation.

Comments

- Die beigefügte Reparaturkostenkalkulation wurde nach bestem Wissen und Gewissen unter eingeschränkten Besichtigungsbedingung im demontagefreien Zustand erstellt. Es können aufgrund verdeckter Beschädigung erhebliche Mehrkosten und somit Abweichung der für den Unfall ausgewiesenen Reparaturkosten nicht ausgeschlossen werden



Figure 1: Diagonal front (left)



Figure 2: Diagonal front (right)



Figure 3: Diagonal rear (left)



Figure 4: Diagonal rear (right)



Figure 5: Interior - front



Figure 6: Interior - rear



Figure 7: Instrument cluster



Figure 8: Instrument panel



Figure 9: interior 360° view



Figure 10: Cargo area



Figure 11: VIN



Figure 12: Mounted tyres

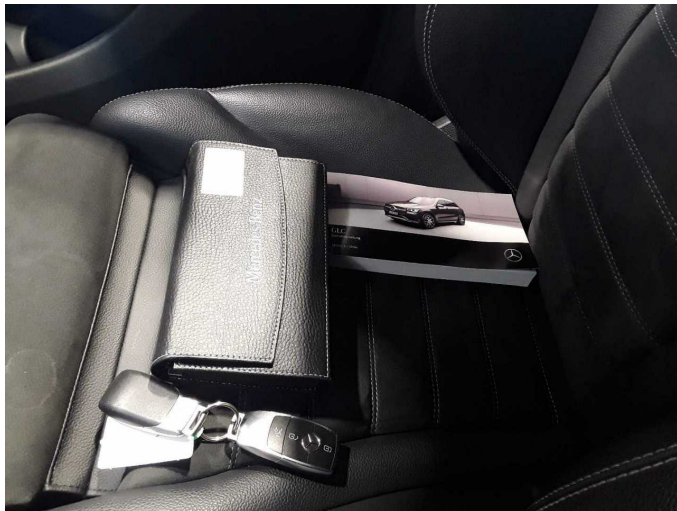


Figure 13: Documents

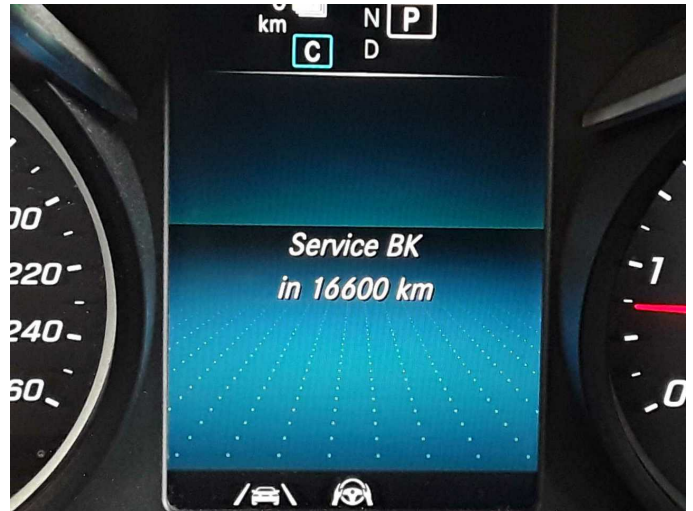


Figure 14: Documents



Figure 15: Documents



Figure 16: Additional tyres

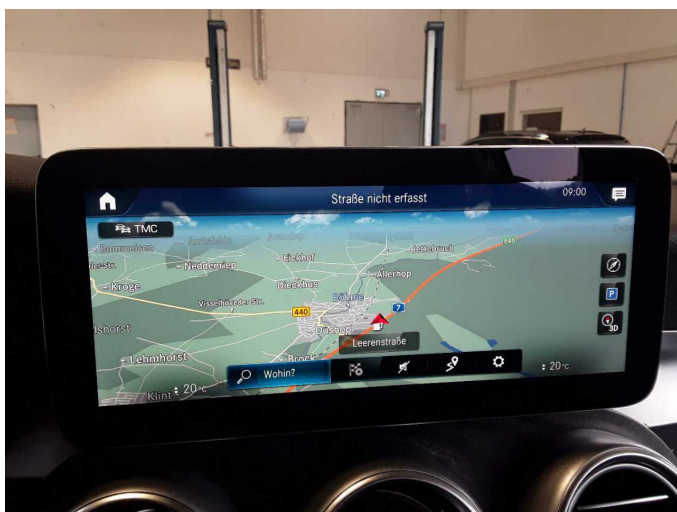


Figure 17: Navigation



Figure 18: Misc.



Figure 19: Misc.



Figure 20: Misc.



Figure 21: Misc.



Figure 22: Misc.



Damage 1: Front bumper: Cover bumper - front - Scratched - Replace



Damage 1: Front bumper: Cover bumper - front - Scratched - Replace



Damage 2: Wheel / tyres: Alloy rim - rear right side - Scratch(es) - Loss in value



Damage 2: Wheel / tyres: Alloy rim - rear right side - Scratch(es) - Loss in value



Damage 3: Body: A-pillar - left side (Klarlack abplatzer) - Paint defect - Repair and paint



Damage 3: Body: A-pillar - left side (Klarlack abplatzer) - Paint defect - Repair and paint



Damage 4: Side panel - rear left side: Side panel (Kratzer an einer fläche (Kreisförmig)) - Scratched - Repair and paint



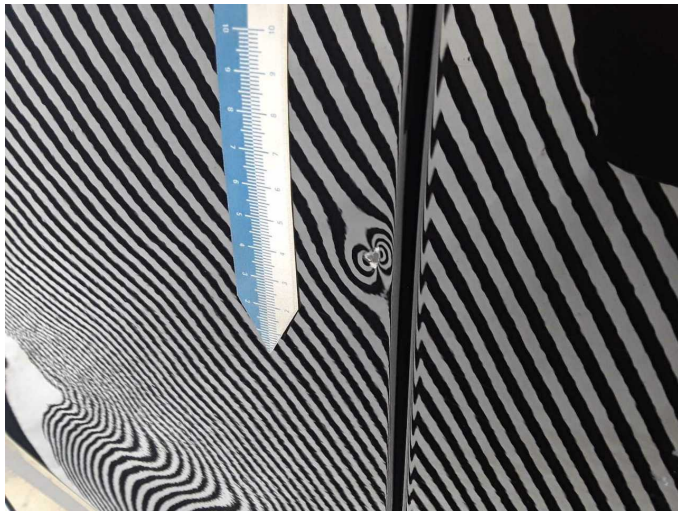
Damage 4: Side panel - rear left side: Side panel (Kratzer an einer fläche (Kreisförmig)) - Scratched - Repair and paint



Damage 5: Door - rear left side: Door - Dent / paintcoat damage - Repair and paint



Damage 5: Door - rear left side: Door - Dent / paintcoat damage - Repair and paint



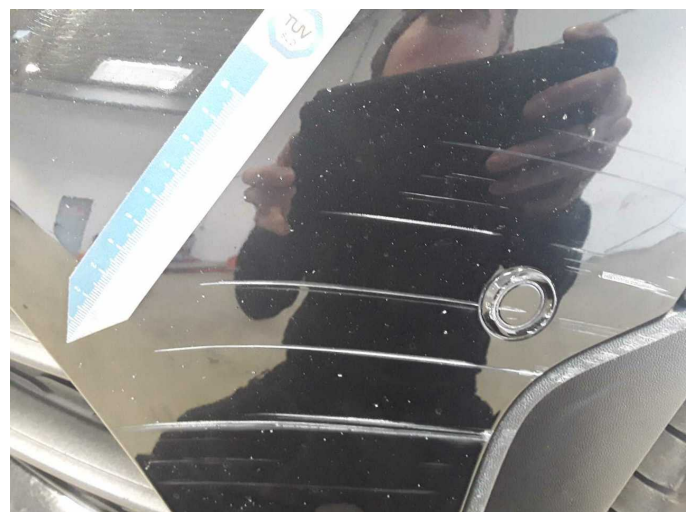
Damage 5: Door - rear left side: Door - Dent / paintcoat damage - Repair and paint



Accident 1: Front, Side - left



Accident 1: Front, Side - left



Accident 1: Front, Side - left



Accident 1: Front, Side - left



Accident 1: Front, Side - left



Accident 1: Front, Side - left



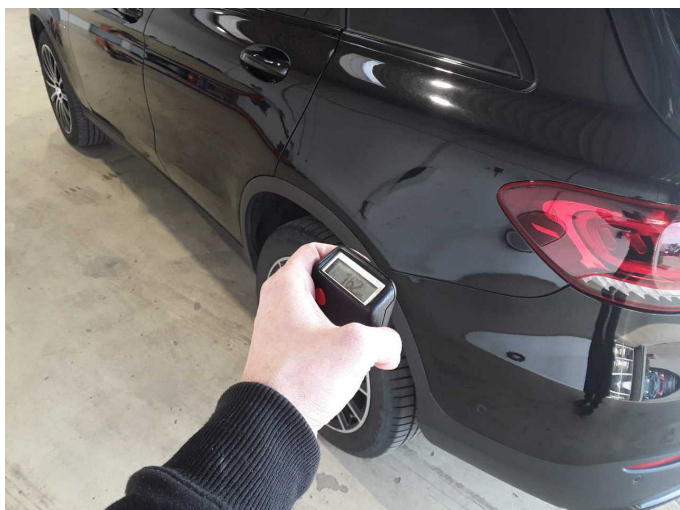
Accident 1: Front, Side - left



Accident 1: Front, Side - left



Accident 1: Front, Side - left



Repainting 1: Side panel - rear left side



Repainting 1: Side panel - rear left side



Wartungshistorie

(gemäß Auftraggeber Informationen)

Fahrgestellnummer: W1N2539111F995415

Hersteller / Modell: MERCEDES-BENZ MB GLC 300 de 4Matic 9G-TRONIC AMG Line

Datum	KM-Stand	Beschreibung
30.06.2025	186.247	Regelwartungsdienst
06.01.2025	161.476	Regelwartungsdienst
27.08.2024	138.287	Batterie ern; Batterie ern; Reparatur Sonstiges; Reparatur Sonstiges; Reparatur Sonstiges; Reparatur Sonstiges; Systemtest/Eigendiagnose; Systemtest/Eigendiagnose
25.06.2024	135.311	Regelwartungsdienst
15.01.2024	110.320	Bremsscheiben hinten; Regelwartungsdienst
11.04.2023	82.422	Regelwartungsdienst
22.09.2022	54.588	Regelwartungsdienst
18.02.2022	27.017	Regelwartungsdienst