



Expertise

Protocol number: 41055819
Order No. / Reference: 25065747
Inspection date: 13 Aug 2025

Manufacturer: Mercedes-Benz
VIN: W1N2533191F782404

Model: GLC-Coupe 300 d 4Matic 9G-TRONIC AMG-Line



Vehicle details	
Manufacturer / Type / Model / Equipment	
Mercedes-Benz GLC-Coupe 300 d 4Matic 9G-TRONIC AMG-Line	
Vehicle Identification number	W1N2533191F782404
Mileage (Read)	125,565 km
First registration	14 Jan 2020
Number of holders	1
Next periodical technical inspection	04/2027
(Report on hand)	
Power / Engine displacement	180 kw / 1,950 ccm
Fuel type / Cylinder	Diesel / 4
Gearbox / Number of gears	Automatic / 9
Type of drive	All-wheel drive
Type of vehicle	SUV
Colour / colour code	SCHWARZ - UNILACK
Doors / Seats	5 / 5
Upholstery type	Artificial leather
Colour of upholstery	Red-Black
Vehicle with smoke odor	no



Vehicle details

Maintenance booklet / proof	digital proof / complete	Next maintenance in	77 Tag(e)
Last maintenance on / at	10/2024 at 113,410 km		
Key is / should be	2 / 2	FZG documents	ZB#2 (B) was available (copy), ZB#1 (S) was not available
		Letter No.	FR146326
Previous damage / Accident	None detectable	Repainting	None detectable
Inspection conditions	sufficient	Lifting equipment / pit	yes
Test drive	Not performed	Engine function test	Performed
Manufacturer key number/ type code number	2222 / AKB 00003		
Emission standard	EURO6;WLTP;AM;PI/CI; M, N1 I	Fine dust sticker	
Permitted total weight	2,530 kg	Empty weight	

Tyres

Mounted tyres

#	Tyre size	Type of tyre	Manufacturer	Tread depth
1)	225/45 R20 105Y	Summer tyres on Light alloy	Michelin	5mm / 5mm
2)	225/45 R20 105Y	Summer tyres on Light alloy	Michelin	7mm / 7mm

Additional tyres

#	Tyre size	Type of tyre	Manufacturer	Tread depth
1)	235/60 R18 107H	Winter tyres on Light alloy	Continental	7mm / 7mm
2)	235/60 R18 107H	Winter tyres on Light alloy	Continental	7mm / 7mm

Legend: Tread depth information for tires on the left is in the first place, for tires on the right is in the second place on the axle in the direction of travel

Equipment

Standard equipment

- Shelves
- Airbag: Kneebag for driver
- Airbag: Windowbags
- 4MATIC all-wheel drive
- ATTENTION ASSIST
- Exterior mirrors left and right heated, electrically adjustable from the inside
- tachometer
- DYNAMIC SELECT
- EASY-Pack load compartment cover (removable)
- Electronic Stability Program (ESP)
- 4-way electric window lifter
- Floor mats in black with AMG lettering
- Rear window heated
- KEYLESS-GO start function
- Instrument cluster with 2 tube-shaped round instruments, 13.97 cm (5.5") multifunction display
- 5-way headrests
- Paint finish: Uni
- Steering wheel: 3-spoke multifunction sports steering wheel in black nappa leather
- Mercedes-Benz emergency call system
- Package: AMG Line Exterior
- Package: Interior light
- Radio accessories: Remote Online
- Radio accessories: Touchpad
- Rear view camera
- Seat: Front sports seats
- Seats: I-Size child restraint system on the outer rear seats
- Cruise control
- Pre-installation for vehicle monitoring
- High-visibility vest for drivers
- Central locking
- Airbag for driver and front passenger
- Airbag: Sidebag for driver and front passenger
- Active Brake Assist
- Anti-lock braking system (ABS)
- Automatic passenger airbag deactivation
- On-board computer
- diesel particulate filter
- Third brake light in LED technology
- EASY-Pack tailgate with electric operation for opening and closing
- Driving light assistant
- Electric parking brake
- Transmission: 9G-TRONIC
- Interior headliner fabric black
- Climate: THERMATIC automatic climate control with 2 climate zones
- Communication module (LTE) for the use of Mercedes me connect services
- LED high-performance headlights
- Steering column mechanically adjustable in height and length
- Navigation accessories: Advanced functions MBUX
- Package: Chrome
- Upholstery: ARTICO man-made leather/DINAMICA microfiber
- Tire pressure monitoring (TPMS)
- Windscreen wipers with rain sensor
- Seats: Folding rear seat backrests
- Seats: Front seats electrically adjustable
- Pre-installation for roof rack systems
- Pre-installation for vehicle setup
- Immobiliser
- Decorative elements: piano lacquer look black/aluminium with light longitudinal grain

Extra equipment

- Instrument panel and door edges in ARTICO man-made leather
- Package: Advanced Park (Parking package with rear view camera Active Parking Assistant with PARKTRONIC)
- Package: Business (Parking Package: Active Parking Assist with PARKTRONIC Advanced Infotainment Package: Media display with touch operation, smartphone integration - Apple CarPlay and Android Auto, Connectivity Package Navigation Comfort Package: Seat heating for driver and front passenger, Seat Comfort Package - electric and manual adjustment options for the front seats Fuel tank with larger capacity (not for 300 e))
- Navigation accessories: Live Traffic Information pre-installation (With Live Traffic Information, your navigation system receives real-time traffic data and optimizes dynamic route guidance. Accurate and up-to-date information on traffic jams, stop-and-go traffic, and more helps you reduce travel times.)
- Package: High-End Infotainment (Media display with touchscreen operation, Smartphone integration: Apple CarPlay and Android Auto, Navigation connectivity package, Traffic Sign Assistant: thanks to the intelligent linking of camera and map data, it can detect not only speed limits, overtaking bans, and their cancellation, but also MBUX Augmented Reality for navigation)
- Upholstery: ARTICO man-made leather cranberry red/black



- Package: Comfort (Seat heating for driver and front passenger, electric and manual adjustment options for driver and front passenger seats, electro-pneumatic 4-way lumbar support and lateral support adjustment with control element on the seat, electric seat cushion tilt adjustment, electric height adjustment, electric backrest adjustment, mechanical seat cushion depth adjustment by 6 cm with leg rest pad, mechanical length adjustment, mechanical headrest adjustment)
- Running boards in aluminum look with rubber studs
- Heat and sound-insulating acoustic glass (The heat and sound-insulating acoustic glass for the front side windows offers you greater noise comfort.)
- Decorative elements: Black open-pore ash wood / light longitudinally ground aluminum
- Radio accessories: Advanced Sound System (9 speakers and 225 watts of system power. The sound system also enhances your driving pleasure acoustically. The speaker system, precisely tuned to the interior, offers dynamic music playback.)
- Radio accessories: Digital radio
- Wheels: 50.8 cm (20") AMG light-alloy wheels, 4-spoke, 5-twin-spoke design (painted high-gloss black with a high-sheen finish, front axle 255/45 R 20 on 8.5 J x 20 ET 40 and rear axle 285/40 R 20 on 9.5 J x 20 ET 22)
- Heat-insulating dark tinted glass all around from B-pillar

Brief expert findings

Documents submitted	At the time of the inspection, the registration certificate Part 2 (letter) was available, but the registration certificate Part 1 (certificate) was not. (Copy)
VIN comparison	The vehicle identification number (VIN) was read and the undersigned verified that it matched the documents submitted during the inspection.
Inspection	The inspection conditions were sufficient for the assessment of the vehicle. Lifting equipment and a pit were available for examining the vehicle.
Test drive	No test drive/maneuvering was carried out during the inspection of the vehicle.
Engine function test	An engine test run was performed.

Value reducing factors

No.	Component group	Description
1	Boot lid / rear door	Boot lid - Scratch(es) - Smart repair
2	Wheel / tyres	Alloy rim - front left side - Scratch(es) - Loss in value
3	Wheel / tyres	Alloy rim - rear right side - Scratch(es) - Loss in value
4	Wheel / tyres	Alloy rim - front right side - Scratched - Loss in value

Wear and tear

No.	Component group	Description
1	Front bumper	Front bumper - Stone chips - No deduction
2	Bonnet	Bonnet - Stone chips - No deduction
3	Vehicle glazing	Windscreen - Stone chips - No deduction
4	Interior	Interior - Soiled - No deduction
5	Rear bumper	Rear bumper - Scratch(es) - No deduction
6	Door - front left side	Door edge - Stone chips - No deduction

The vehicle shows signs of wear commensurate with its age and use.



Order/Scope of order

The order was placed to prepare a sales report for the vehicle described. This includes the following:

- Description of core relevant information about the vehicle
- Documentation of equipment features
(*Delivery by third-party service providers*)
- Documentation of damage, defects, missing parts
- Documentation of previous damage, unrepaired previous damage, repainting
- a brief visual or functional inspection of the equipment details if possible.
(*Functional tests of driver assistance systems are not included in the scope of services!*)
- a photo documentation of the vehicle

Basis for the order

This product is based on the Alphabet Fuhrpark GmbH guidelines for vehicle returns and valuations. The expert makes the explicit findings in each individual case objectively within the framework of the specified standards based on his or her own expertise.

The vehicle inspection takes place in a disassembled state.

Damage or defects that can only be detected during disassembly/diagnosis work or through advanced knowledge remain within the scope of the prognosis risk. An extended risk exists for concealed defects caused by fraudulent deception and not identifiable by the expert.

Damage or defects resulting from normal use or wear and tear of the vehicle will be accepted according to the applicable standard.

There was no explicit identification or monetary consideration of the expected features within the product.

Features which in their nature and severity slightly exceed normal use but do not constitute unacceptable damage will be documented and identified under signs of use if necessary.

Damage or defects which, according to the underlying standard, can no longer be attributed to normal use or wear and tear are listed in the product under "Depreciating Factors".

Depending on the product specification, a monetary ID can be provided. If this takes place, the costs can be 100% d or pro rata depending on the vehicle's age and mileage.

Previous damages

Apparently, no repaired previous damage could be found on the vehicle.

Comments

- Der 2.Radsatz gehört nicht zur Ausstattung und wurde nicht in der Bewertung berücksichtigt.



Figure 1: Diagonal front (left)



Figure 2: Diagonal front (right)



Figure 3: Diagonal rear (left)



Figure 4: Diagonal rear (right)



Figure 5: Interior - front



Figure 6: Interior - rear



Figure 7: Instrument cluster



Figure 8: Instrument panel



Figure 9: interior 360° view



Figure 10: Cargo area



Figure 11: VIN



Figure 12: Mounted tyres



Figure 13: Documents



Figure 14: Documents

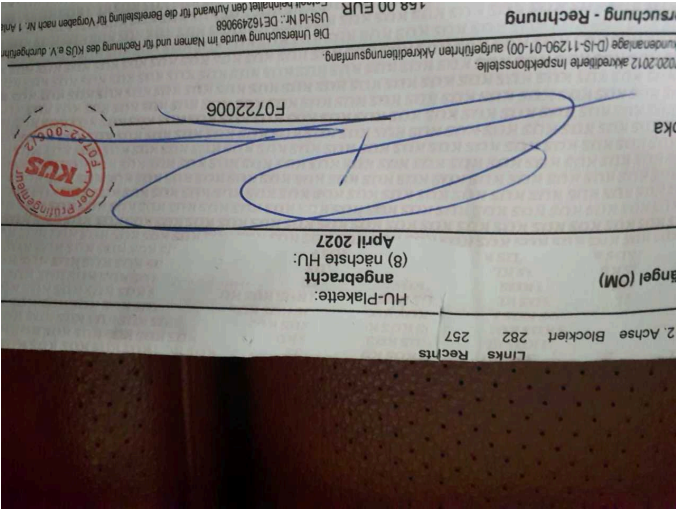


Figure 15: Documents



Figure 16: Additional tyres



Figure 17: Additional tyres



Figure 18: Navigation



Figure 19: Misc.



Figure 20: Misc.

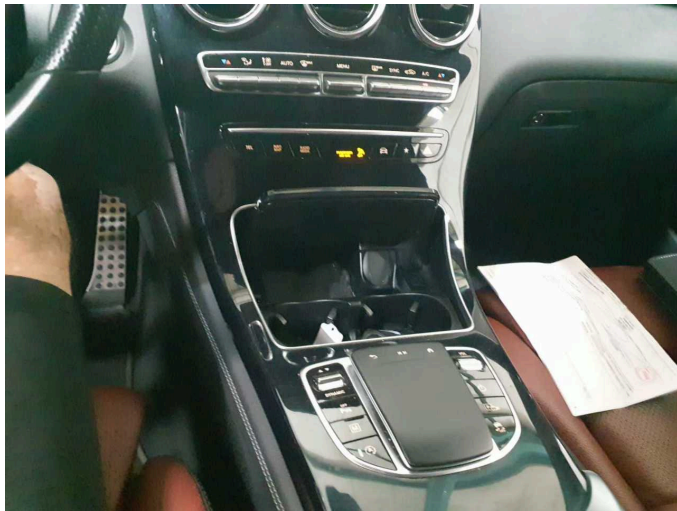


Figure 21: Misc.

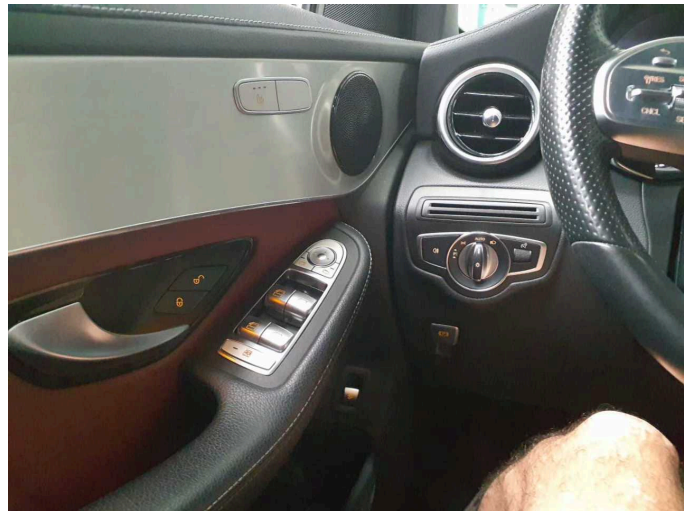


Figure 22: Misc.



Figure 23: Misc.

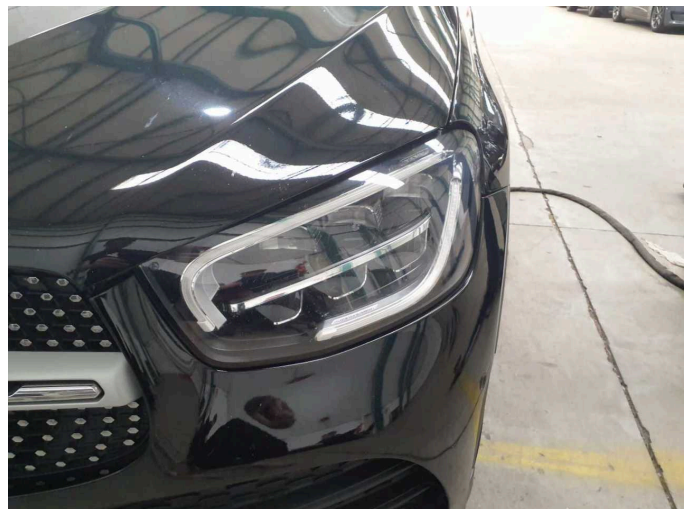


Figure 24: Misc.



Figure 25: Misc.



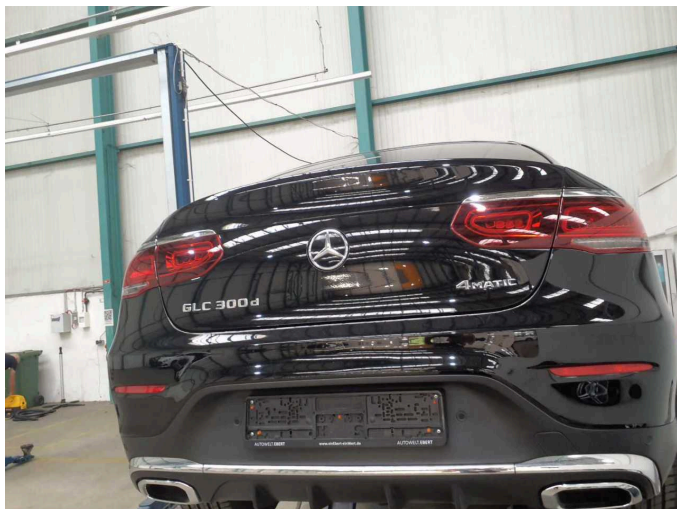
Figure 26: Misc.



Figure 27: Misc.



Figure 28: Misc.



Damage 1: Boot lid / rear door: Boot lid - Scratch(es) - Smart repair



Damage 1: Boot lid / rear door: Boot lid - Scratch(es) - Smart repair



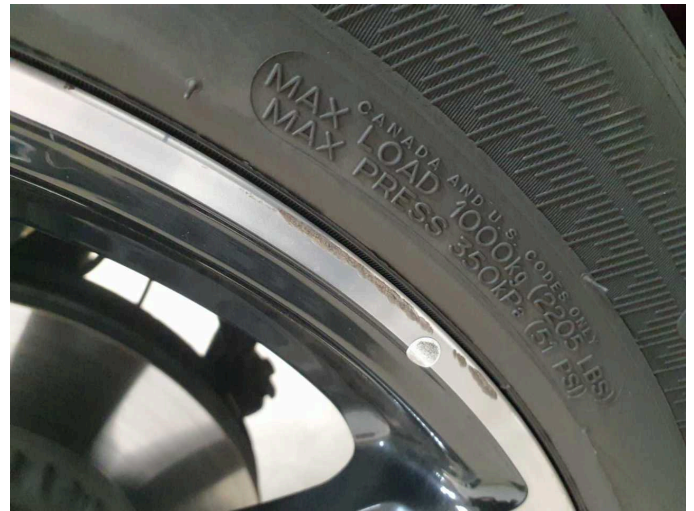
Damage 2: Wheel / tyres: Alloy rim - front left side - Scratch(es) - Loss in value



Damage 2: Wheel / tyres: Alloy rim - front left side - Scratch(es) - Loss in value



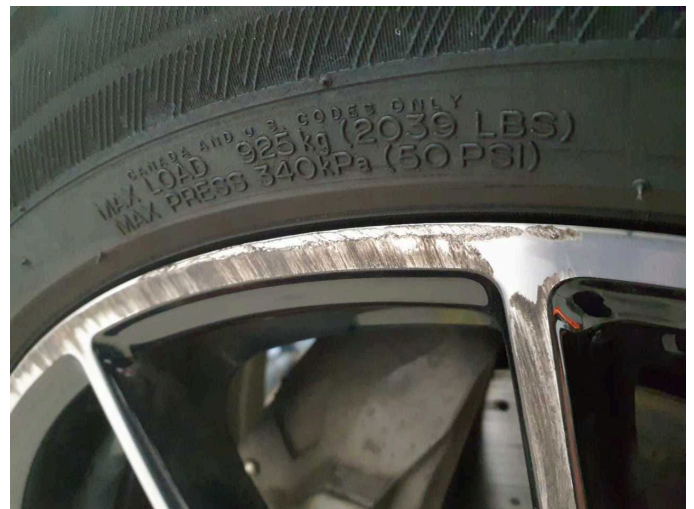
Damage 3: Wheel / tyres: Alloy rim - rear right side - Scratch(es) - Loss in value



Damage 3: Wheel / tyres: Alloy rim - rear right side - Scratch(es) - Loss in value



Damage 4: Wheel / tyres: Alloy rim - front right side - Scratched - Loss in value



Damage 4: Wheel / tyres: Alloy rim - front right side - Scratched - Loss in value