



Expertise

Protocol number: 41500627
Order No. / Reference: 25111924
Inspection date: 11 Sept 2025

Manufacturer: Mercedes-Benz
VIN: W1N2533111G105746

Model: GLC-Coupe 300 de 4Matic 9G-TRONIC Exclusive



Vehicle details	
Manufacturer / Type / Model / Equipment	
Mercedes-Benz GLC-Coupe 300 de 4Matic 9G-TRONIC Exclusive	
Vehicle Identification number	W1N2533111G105746
Mileage (Read)	87,757 km
First registration	7 Jun 2022
Number of holders	1
Power / Engine displacement	143 kw / 1,950 ccm
Fuel type / Cylinder	Hybr.D/E ext. edition / 4
Gearbox / Number of gears	Automatic / 9
Type of drive	All-wheel drive
Type of vehicle	Coupe
Colour / colour code	MOJAVESILVER METALLIC
Doors / Seats	5 / 5
Upholstery type	Artificial leather
Colour of upholstery	Black-Anthracite
Vehicle with smoke odor	no



Vehicle details

Maintenance booklet / proof	digital proof / complete	Next maintenance in	230 Tag(e)
Last maintenance on / at	04/2025 at 77,858 km		
Key is / should be	2 / 2	FZG documents	ZB#2 (B) was available (copy), ZB#1 (S) was not available
		Letter No.	GJ479664
Previous damage / Accident	Detectable	Repainting	Detectable
Inspection conditions	sufficient	Lifting equipment / pit	yes
Test drive	Not performed	Engine function test	Performed
Manufacturer key number/ type code number	2222 / ASU 00057		
Emission standard	EURO6;WLTP;AP;PI/CI; M, N1 I	Fine dust sticker	
Permitted total weight	2,660 kg	Empty weight	

Tyres

Mounted tyres

#	Tyre size	Type of tyre	Manufacturer	Tread depth
1)	235/55 R19 105W	Summer tyres on Light alloy	Continental	0mm / 0mm
2)	235/55 R19 105W	Summer tyres on Light alloy	Continental	5mm / 5mm

Additional tyres

#	Tyre size	Type of tyre	Manufacturer	Tread depth
1)	235/60 R18 107H	Winter tyres on Light alloy	Continental	8mm / 8mm
2)	235/60 R18 107H	Winter tyres on Light alloy	Continental	8mm / 8mm

Legend: Tread depth information for tires on the left is in the first place, for tires on the right is in the second place on the axle in the direction of travel

Equipment

Standard equipment

- Storage compartments (storage compartment with 12 V socket in the center console, illuminated, folding armrest for driver and front passenger, illuminated and lockable glove compartment)
- Airbag: Windowbags
- Acoustic Surrounding Area Protection (To ensure that your vehicle does not pose a danger to pedestrians and cyclists, even when driving purely electrically and almost silently, the Acoustic Surrounding Area Protection generates a Mercedes-Benz-specific sound outside the vehicle up to a speed of 30 km/h.)
- ATTENTION ASSIST (can detect typical signs of fatigue through driver behavior and warn the driver of increasing fatigue or inattention)
- On-board computer
- Brake system with larger brake discs on the front axle (perforated front brake discs and front brake calipers with Mercedes-Benz lettering.)
- DYNAMIC SELECT
- EASY-Pack load compartment cover (removable)
- Electronic Stability Program (ESP)
- 4-way electric window lifter (with comfort operation and anti-pinch protection)
- Transmission: 9G-TRONIC
- Interior headliner fabric black
- KEYLESS-GO start function
- Climate: THERMATIC automatic climate control with 2 climate zones (The THERMATIC automatic climate control with 2 climate zones offers individual climate comfort for the front seats: the driver and front passenger can adjust the temperature separately for their side. This is maintained constant thanks to the automatic climate control and the sensitive sensor system, without any manual adjustment.)
- 5-way headrests (4-way adjustable for driver and front passenger and 2-way adjustable in the rear)
- Charging cable for household socket, 5 m, smooth (This charging cable, also called a Mode 2 cable, allows you to charge your vehicle battery from a household socket with up to 2.3 kW (230 V, 1-phase, 10 A) and is compatible with type E/F CEE 7/7 sockets.)
- Steering column mechanically adjustable in height and length
- Navigation accessories: Advanced MBUX functions (personalization (profiles) and prediction functions - LINGUATRONIC with natural language understanding - activation via "Hey Mercedes" - Wi-Fi hotspot - Internet radio)
- Interior Lighting Package (More light, more atmosphere, better orientation: The interior lighting package provides more comprehensive direct and indirect lighting. The additional lighting elements create a pleasant atmosphere and facilitate operation.)
- Radio accessories: Digital radio
- Airbag for driver and front passenger
- Airbag: Kneebag for driver
- Airbag: Sidebag for driver and front passenger (combined thorax/pelvis bag)
- Active Brake Assist (can help prevent rear-end collisions with vehicles ahead or stationary vehicles, as well as accidents with moving pedestrians and cyclists. In addition to distance and collision warnings, it also offers brake boost—including autonomous emergency braking.)
- 4MATIC all-wheel drive
- Anti-lock braking system (ABS)
- Automatic passenger airbag deactivation
- Heated exterior mirrors on the left and right, electrically adjustable from the inside (with aspherically curved mirror glass and integrated indicator light)
- diesel particulate filter
- tachometer
- Third brake light in LED technology
- EASY-Pack tailgate with electric operation for opening and closing
- Driving light assistant
- Electric parking brake
- Velour floor mats in interior color
- Heated rear window (with timer control)
- Instrument panel and door edges in ARTICO man-made leather
- Instrument cluster with 2 tube-shaped round instruments, 13.97 cm (5.5") multifunction display
- Communication module (LTE) for using Mercedes me connect services (The communication module (LTE) offers you a clear advantage in terms of convenience and safety. It constantly connects the vehicle to the internet, allowing you to use helpful services such as Live Traffic Information from Mercedes me connect. Two mobile network antennas and an LTE-capable SIM card ensure a fast connection.)
- Paint finish: Uni
- Charging system: AC on-board charger 7.4 kW (AC)
- LED high-performance headlights (with integrated daytime running lights and LED rear lights)
- Steering wheel: Multifunction sports steering wheel in 3-spoke design in black leather (with black decorative stitching and two-part front trim in silver chrome)
- Mercedes-Benz emergency call system
- Package: Storage (map pockets on the back of the front seats - net on the loading floor - folding box under the loading floor - 12 V socket in the left-hand cargo area - two USB-C ports in the rear)



- Radio accessories: Remote Online (technical preparation for the use of Mercedes connect me services such as remote vehicle status query, vehicle tracking, etc. via smartphone)
- Tire pressure monitoring (TPMS)
- Remote Services Plus (The Remote Services Plus package transforms mobility into a new experience, offering greater comfort and safety. Status queries provide information about the range. You can remotely control certain functions and locate your vehicle. Services such as Maintenance Management coordinate service appointments, saving you valuable time.)
- Seats: I-Size child restraint system on the outer rear seats
- Seats: Front seats electrically adjustable (with electrical adjustment for seat height and backrest angle as well as mechanical adjustment for longitudinal adjustment and headrests)
- Pre-installation for roof rack systems
- High-visibility vest for drivers
- Immobiliser
- Central locking (with interior switch, automatic locking (can be switched off) and crash sensor with emergency opening)
- Package: Chrome (radiator grille with integrated Mercedes star and 2 slats in matt iridium silver with chrome inserts, optical underbody protection at the front and rear in chrome, beltline trim strip in polished aluminum, window surround in polished aluminum, exhaust system with 2 visible tailpipe trims in stainless steel, permanently integrated into the bumper)
- Radio accessories: Touchpad (integrated into the center console, including a palm rest - single and multi-finger gestures, swiping movements, and zoom gestures by spreading and pinching the fingers - recognizes handwritten characters: letters, special characters, and numbers - clear haptic feedback)
- Rear view camera (with dynamic guide lines on the display and dirt-removal function)
- Windscreen wipers with rain sensor
- Power steering
- Seats: Folding rear seat backrests (40/20/40 split including Easy Pack Quickfold and center armrest with double cup holder and storage compartment)
- Cruise control (Drive in a relaxed and fuel-efficient manner, especially on longer journeys. Select your desired speed, and your vehicle will automatically control the speed. In addition to maintaining your cruising speed, the speed limiter helps you maintain a maximum speed. This increases road safety and protects you from expensive fines.)
- Decorative elements: Wood Linden linestructure brown glossy

Extra equipment

- Airbag: Sidebags in the rear left and right
- Trailer hitch with ESP trailer stabilization (fully electrically foldable and extendable)
- Head-up display
- KEYLESS GO
- Paint finish: metallic
- Package: Advanced Assistance (Mirror package: Electrically folding exterior mirrors, lowerable right exterior mirror, automatic dimming function Lane package: Active Lane Keeping Assist, Blind Spot Assist, Active Distance Assist DISTRONIC)
- Package: Business (for plug-in hybrid vehicles) (Advanced Parking Package: Active Parking Assistant PARKTRONIC with rearview camera; Advanced Infotainment Package: Media display with touch operation, smartphone integration (Apple CarPlay and Android Auto); Connectivity Package (Navigation); Traffic Sign Assistant; Comfort Package: Seat heating for driver and front passenger; Seat Comfort Package (electric and manual adjustment options for the front seats); Public Charging Package)
- Upholstery: ARTICO two-tone leather man-made
- Wheels: 48.3 cm (19") light alloy wheels, 4-spoke design (painted high-gloss black and high-sheen with 235/55 R 19 on 8 J x 19 ET 38)
- Ambient lighting (Design the interior according to your personal preferences or current mood. With a total of 64 colors, the ambient lighting offers almost unlimited lighting possibilities and has the right color for every situation. Illuminated door sills on the driver and passenger sides.)
- Charging cable for wallboxes and public charging stations, 8 m, smooth (This charging cable, also called a Mode 3 cable, allows you to charge your vehicle battery at a wallbox or public charging station with up to 7.4 kW (Type 2, 3-phase, 20 A).)
- Package: Advanced Light (LED High Performance headlights and adaptive rear lights in LED technology Adaptive High Beam Assistant)
- Package: High End Park (Parking package with 360° camera Active Parking Assistant with PARKTRONIC)
- Package: Night for standard exterior equipment (radiator grille with 2 louvres in high-gloss black with chrome inserts, 48.3 cm (19") light alloy wheels in 6-spoke design, painted high-gloss black and with a high-sheen finish with 235/55 R 19 on 8 J x 19 ET 38, roof rails in black, underbody protection at the front and rear painted black, exterior mirror housings painted high-gloss black, beltline trim strip and window surround in high-gloss black, heat-insulating, dark-tinted glass at the rear from the B-pillar)
- Heated windscreen washer system



- Wheels: Winter complete wheels M+S 4-way 45.7 cm (18") light alloy wheels in 5-twin-spoke design (45.7 cm (18") light alloy wheels in 5-twin-spoke design, painted matt Himalayan grey with a high-sheen finish, size 235/60 R 18 on 8.0 J x 18 ET 38)
- Decorative elements: Black open-pore ash wood
- Sliding-tilting roof electric glass version
- Fixed installation telephone
- Heat and sound-insulating acoustic glass (The heat and sound-insulating acoustic glass for the front side windows offers you greater noise comfort.)

Brief expert findings

Documents submitted	At the time of the inspection, the registration certificate Part 2 (letter) was available, but the registration certificate Part 1 (certificate) was not. (Copy)
VIN comparison	The vehicle identification number (VIN) was read from the vehicle and its conformity with the submitted documents was verified during the inspection by the undersigned.
Inspection	The inspection conditions were sufficient for the assessment of the vehicle. Lifting equipment and a pit were available for examining the vehicle.
Test drive	No test drive/maneuvering was carried out during the inspection of the vehicle.
Engine function test	An engine test run was performed.

Value reducing factors

No.	Component group	Description
1	Wheel / tyres	Tyre - front - Worn - Replace

Wear and tear

No.	Component group	Description
1	Vehicle glazing	Windscreen - Stone chips - No deduction
2	Interior	Interior - Scratch(es) - No deduction
3	Body	Body - Scratch(es) - No deduction
4	Rear bumper	Rear bumper - Scratch(es) - No deduction
5	Front bumper	Spoiler - Scratch(es) - No deduction
6	Front bumper	Front bumper - Stone chips - No deduction

The vehicle shows signs of wear commensurate with its age and use.

Previous damages

No.	Previous damage	Extent of damage (Net)
1	Rear, Provided by user / customer, from 16 Jul 2025	1.367,56 €
2	Side right, Provided by user / customer, from 15 Mar 2023	1.951,38 €
3	Rear, Provided by user / customer, from 18 Jul 2023	5.551,22 €

Repainting

No.	Repainting
1	Boot lid / rear door, Mudguard - right side, Door - front right side, Professionally carried out, Invoice of repair done Non-existent

Paint coat thickness measurement

Boot lid / rear door	208 µm	Mudguard - right side	189 µm
Door - front right side	186 µm		



Order/Scope of order

The order was placed to prepare a sales report for the vehicle described. This includes the following:

- Description of core relevant information about the vehicle
- Documentation of equipment features
(Delivery by third-party service providers)
- Documentation of damage, defects, missing parts
- Documentation of previous damage, unrepaired previous damage, repainting
- a brief visual or functional inspection of the equipment details if possible.
(Functional tests of driver assistance systems are not included in the scope of services!)
- a photo documentation of the vehicle

Basis for the order

This product is based on the Alphabet Fuhrpark GmbH guidelines for vehicle returns and valuations. The expert makes the explicit findings in each individual case objectively within the framework of the specified standards based on his or her own expertise.

The vehicle inspection takes place in a disassembled state.

Damage or defects that can only be detected during disassembly/diagnosis work or through advanced knowledge remain within the scope of the prognosis risk. An extended risk exists for concealed defects caused by fraudulent deception and not identifiable by the expert.

Damage or defects resulting from normal use or wear and tear of the vehicle will be accepted according to the applicable standard.

There was no explicit identification or monetary consideration of the expected features within the product.

Features which in their nature and severity slightly exceed normal use but do not constitute unacceptable damage will be documented and identified under signs of use if necessary.

Damage or defects which, according to the underlying standard, can no longer be attributed to normal use or wear and tear are listed in the product under "Depreciating Factors".

Depending on the product specification, a monetary ID can be provided. If this takes place, the costs can be 100% d or pro rata depending on the vehicle's age and mileage.

Previous damages

According to available information previous damages were repaired at the vehicle. Traces of repairs, which allow conclusions about the area of repair, were not recognizable during the inspection.



ALPHABET

Figure 1: Diagonal front (left)



ALPHABET

Figure 2: Diagonal front (right)



ALPHABET

Figure 3: Diagonal rear (left)



ALPHABET

Figure 4: Diagonal rear (right)



Figure 5: Interior - front



Figure 6: Interior - rear



Figure 7: Instrument cluster



Figure 8: Instrument panel



Figure 9: Interior 360° view



Figure 10: Cargo area



Figure 11: VIN



Figure 12: Mounted tyres

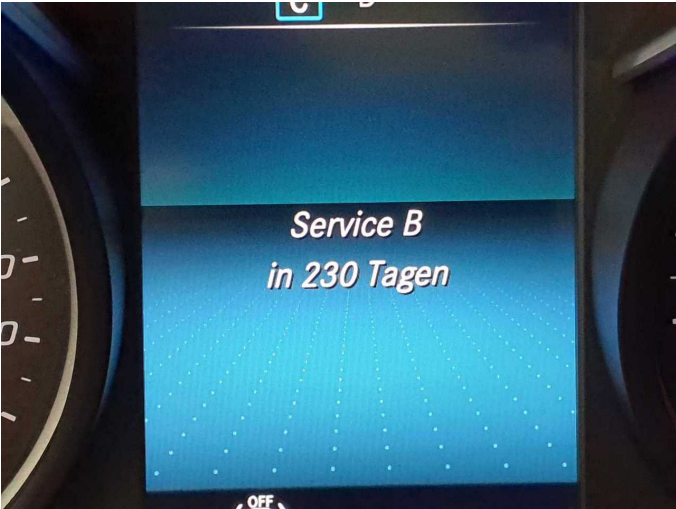


Figure 13: Documents

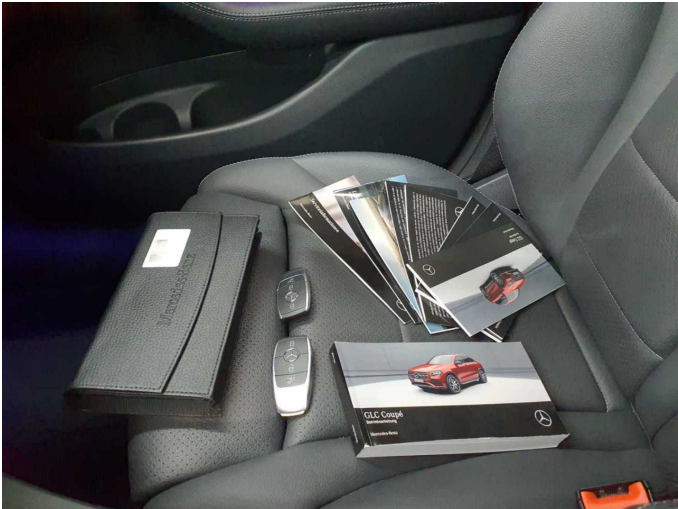


Figure 14: Documents



Figure 15: Additional tyres



Figure 16: Navigation



Figure 17: Misc.



Figure 18: Misc.



Figure 19: Misc.



Figure 20: Misc.



Figure 21: Misc.



Figure 22: Misc.



Figure 23: Misc.



Figure 24: Misc.



Figure 25: Misc.

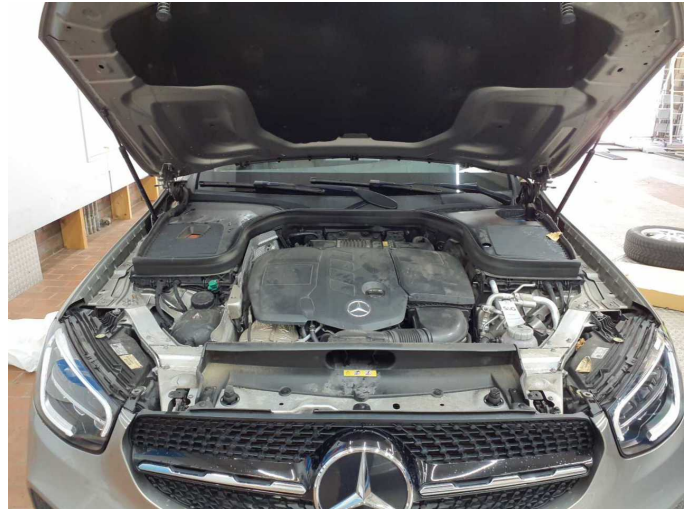


Figure 26: Misc.

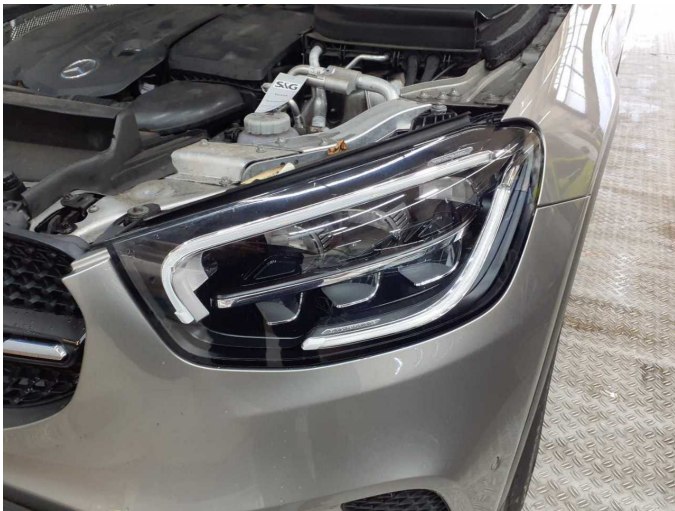


Figure 27: Misc.



Figure 28: Misc.

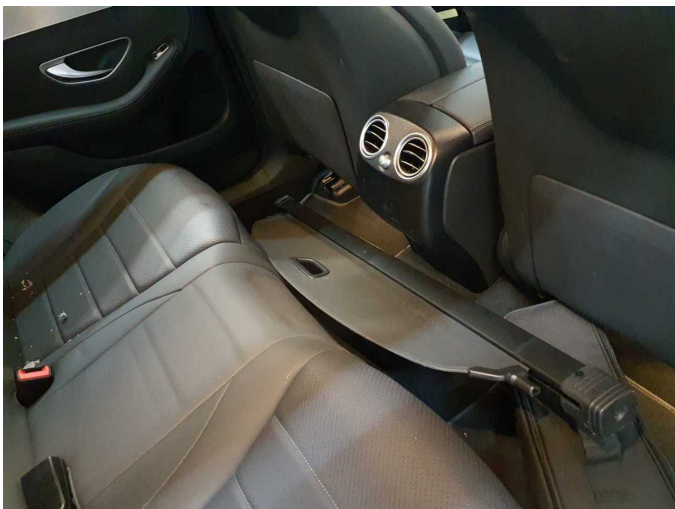


Figure 29: Misc.

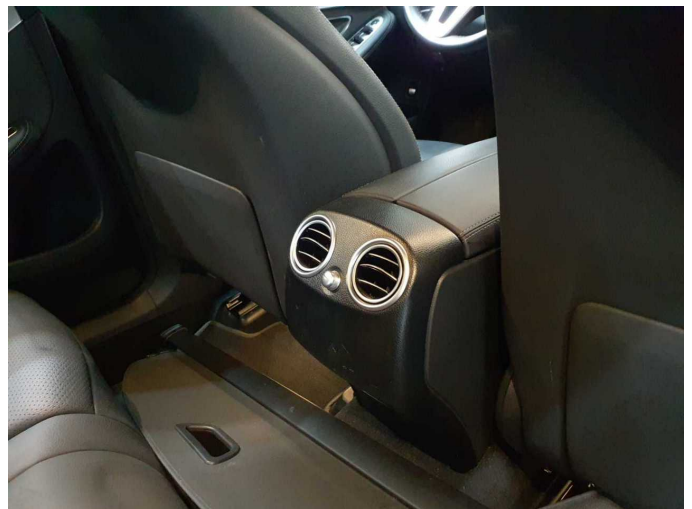


Figure 30: Misc.



Figure 31: Misc.



Figure 32: Misc.



Figure 33: Misc.



Figure 34: Misc.



Figure 35: Misc.



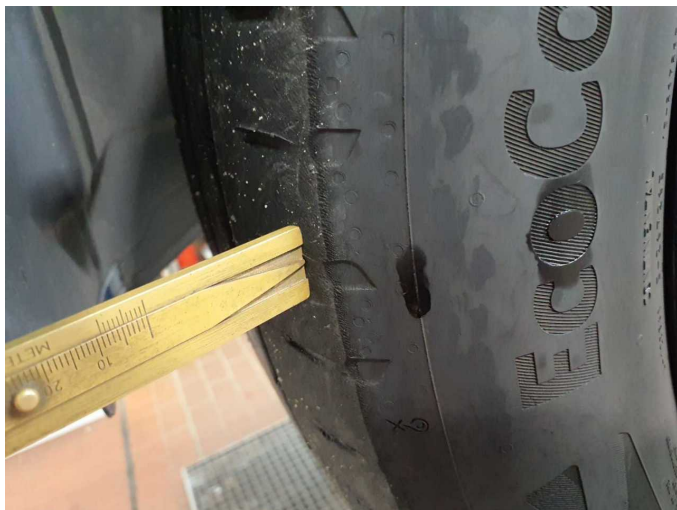
Figure 36: Misc.



Damage 1: Wheel / tyres: Tyre - front - Worn - Replace



Damage 1: Wheel / tyres: Tyre - front - Worn - Replace



Damage 1: Wheel / tyres: Tyre - front - Worn - Replace



Wear and tear 4: Rear bumper: Rear bumper - Scratch(es) - No deduction



Wear and tear 4: Rear bumper: Rear bumper - Scratch(es) - No deduction



Wear and tear 5: Front bumper: Spoiler - Scratch(es) - No deduction



Wear and tear 5: Front bumper: Spoiler - Scratch(es) - No deduction



Wear and tear 6: Front bumper: Front bumper - Stone chips - No deduction



Wear and tear 6: Front bumper: Front bumper - Stone chips - No deduction



Repainting 1: Boot lid / rear door, Mudguard - right side, Door - front right side



Repainting 1: Boot lid / rear door, Mudguard - right side, Door - front right side



Repainting 1: Boot lid / rear door, Mudguard - right side, Door - front right side



Repainting 1: Boot lid / rear door, Mudguard - right side, Door - front right side



Repainting 1: Boot lid / rear door, Mudguard - right side, Door - front right side



Repainting 1: Boot lid / rear door, Mudguard - right side, Door - front right side



Wartungshistorie

(gemäß Auftraggeber Informationen)

Fahrgestellnummer: W1N2533111G105746

Hersteller / Modell: MERCEDES-BENZ MB GLC-Coupe 300 de 4Matic 9G-TRONIC
Exclusive

Datum	KM-Stand	Beschreibung
30.04.2025	77.858	HU + AU
29.04.2025	77.858	Regelwartungsdienst
02.08.2024	59.030	Bremsklötze hinten
08.05.2024	53.627	Regelwartungsdienst
04.05.2023	27.785	Regelwartungsdienst